

# High School #6 Redistricting



**School Board Meeting**  
**January 14, 2025**



**Stafford County Public Schools**

*Inspire | Empower | Excel*

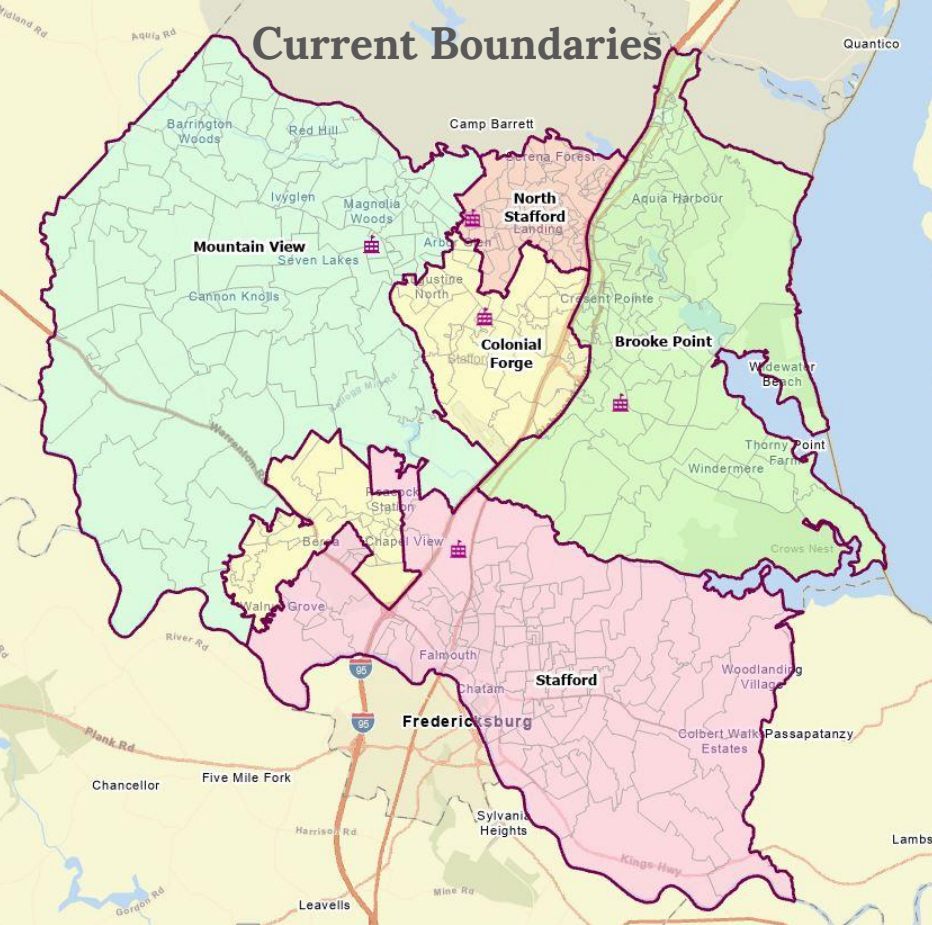
# Scenario E



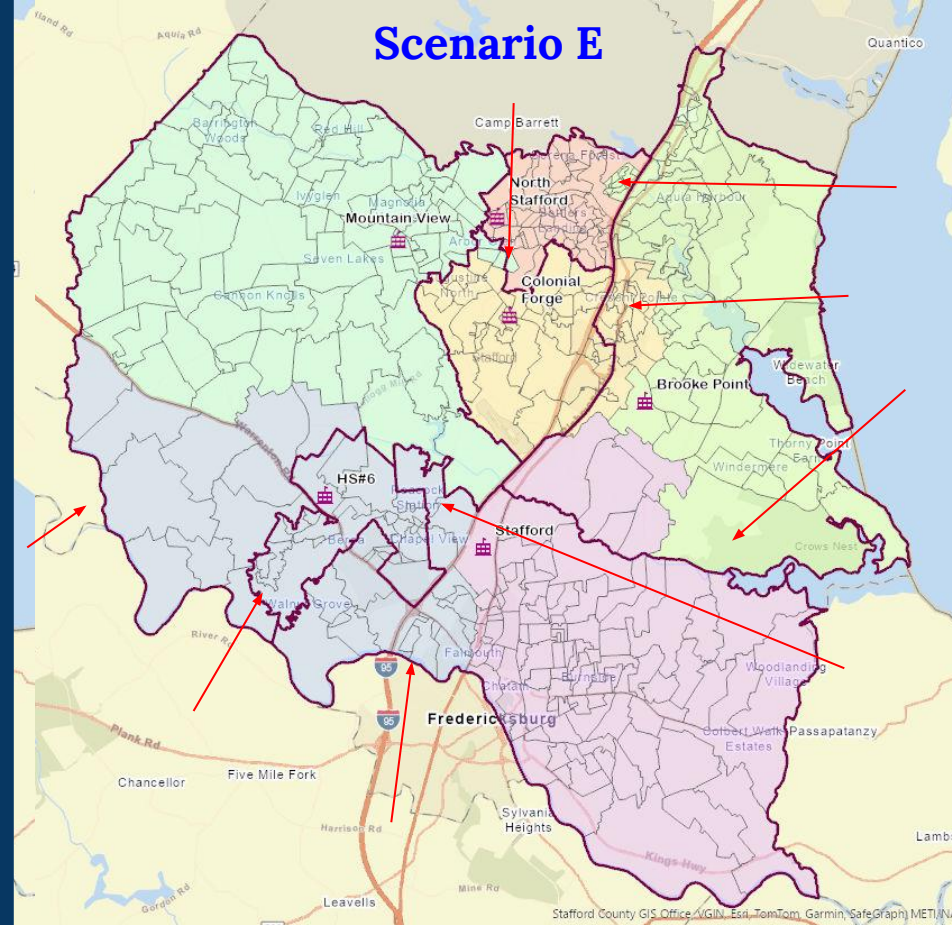
**Stafford County Public Schools**

*Inspire | Empower | Excel*

# Current Boundaries



# Scenario E



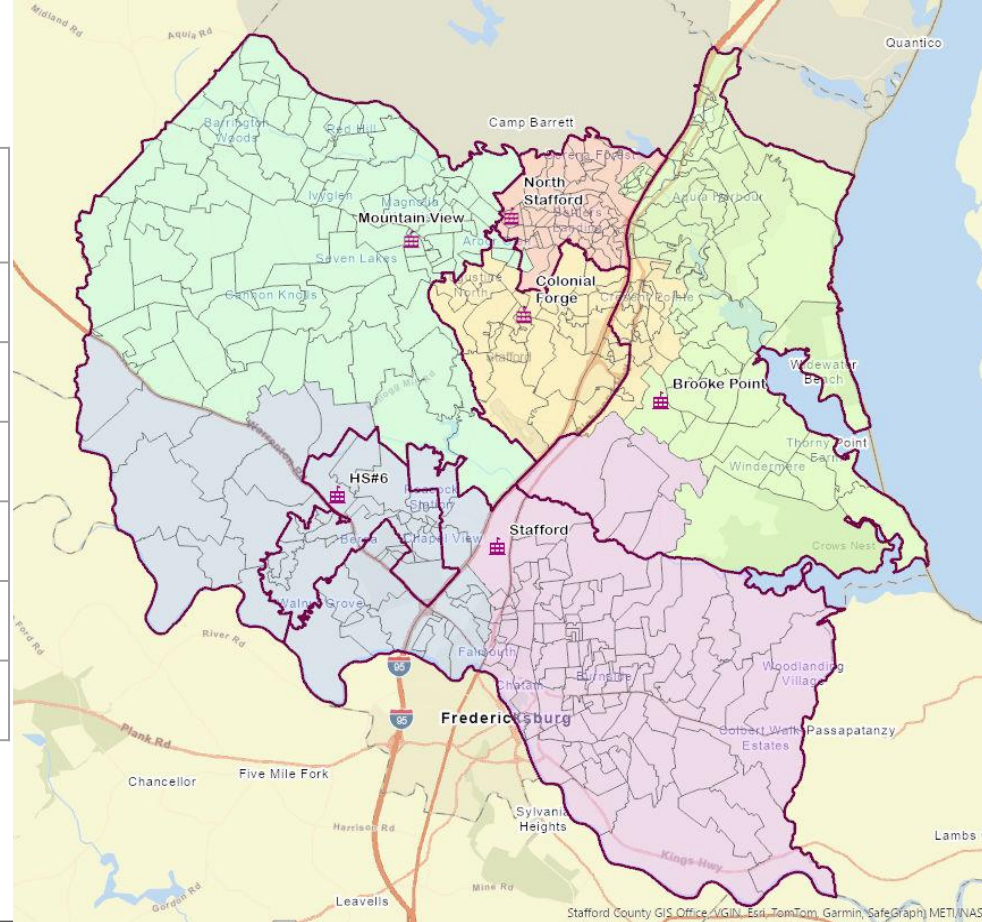
**Stafford County Public Schools**

*Inspire | Empower | Excel*

# Scenario E

FRL = Free & Reduced Lunch  
b/c = Boundary Change

High School	Capacity Before b/c 2026	Capacity After b/c 2026	Capacity After b/c 2029	Capacity After b/c 2032	FRL% Before	FRL% After
North Stafford	105%	79%	82%	97%	51%	48%
Brooke Point	108%	89%	95%	105%	41%	43%
Colonial Forge	98%	92%	93%	100%	30%	32%
Mountain View	99%	91%	92%	92%	25%	26%
Stafford	108%	88%	91%	94%	38%	35%
HS#6	N/A	79%	86%	99%	N/A	39%



**Stafford County Public Schools**

Inspire | Empower | Excel

# Scenario E - Reassigned Student Estimates for 2027

Scenario E	Brooke Point HS	Colonial Forge HS	HS#6	Mountain View HS	North Stafford HS	Stafford HS	Grand Total
Brooke Point HS	1,567	742				71	2,380
Colonial Forge HS		1,233	886	109			2,228
Mountain View HS			272	1,818			2,090
North Stafford HS	366			38	1,597		2,001
Stafford HS			587			1,816	2,403
<b>Grand Total</b>	<b>1,933</b>	<b>1,975</b>	<b>1,744</b>	<b>1,964</b>	<b>1,597</b>	<b>1,887</b>	<b>11,102</b>

## How to read this chart:

- Brooke Point HS is estimated to have 1,567 in-boundary students, plus 366 from North Stafford, for a grand total of 1,933 students.
- Colonial Forge HS is estimated to have 1,233 in-boundary students, plus 742 students from Brooke Point, for a grand total of 1,975 students.
- HS#6 is estimated to receive 886 students from Colonial Forge, plus 272 students from Mountain View, plus 587 students from Stafford, for a grand total of 1,744 students.

Note: Totals are subject to rounding error.



**Stafford County Public Schools**

*Inspire | Empower | Excel*

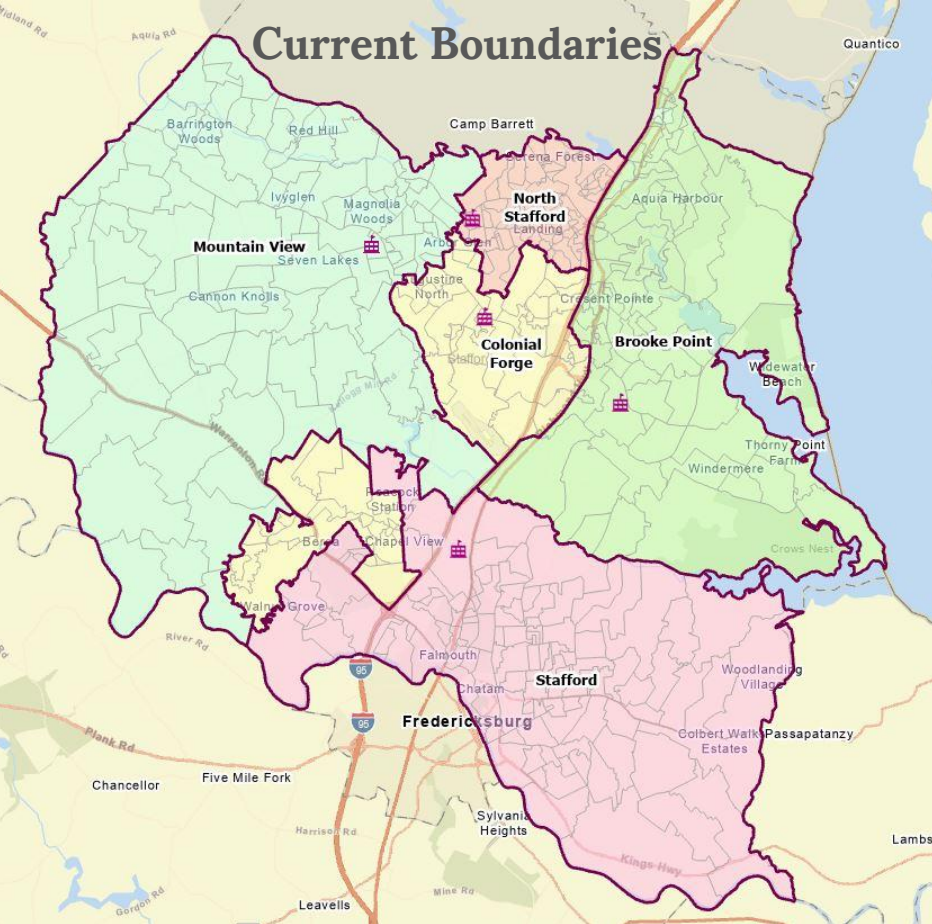
# Scenario F1



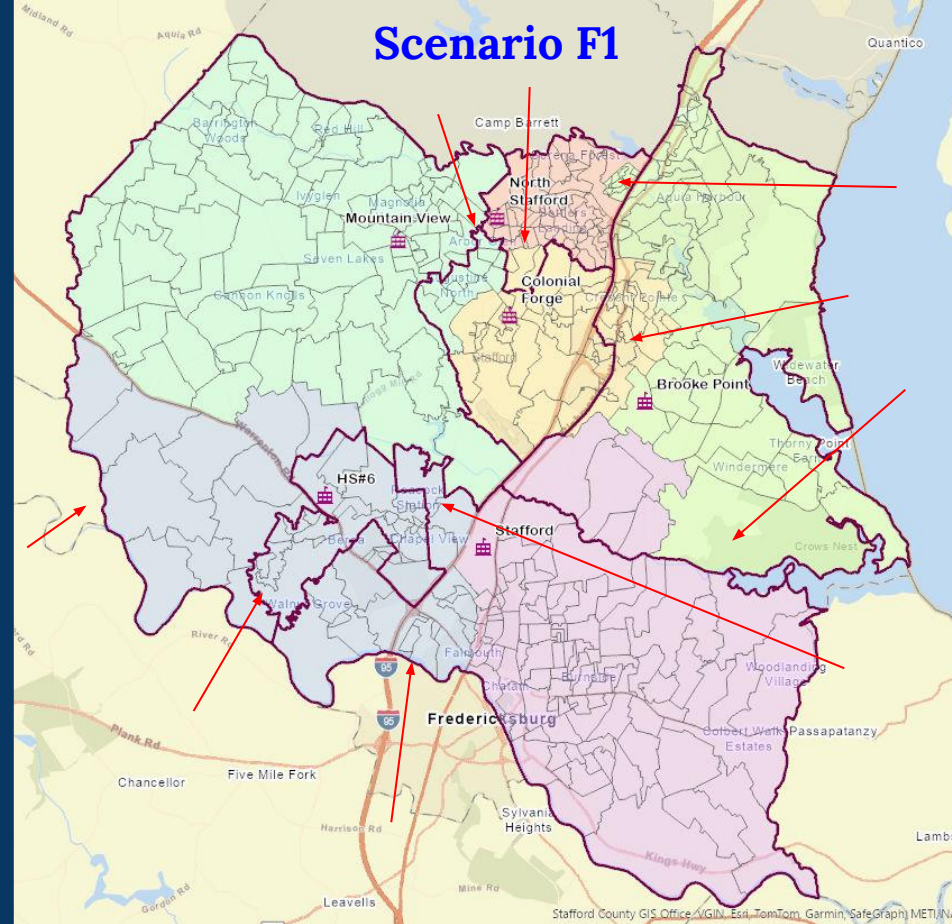
**Stafford County Public Schools**

*Inspire | Empower | Excel*

# Current Boundaries



# Scenario F1



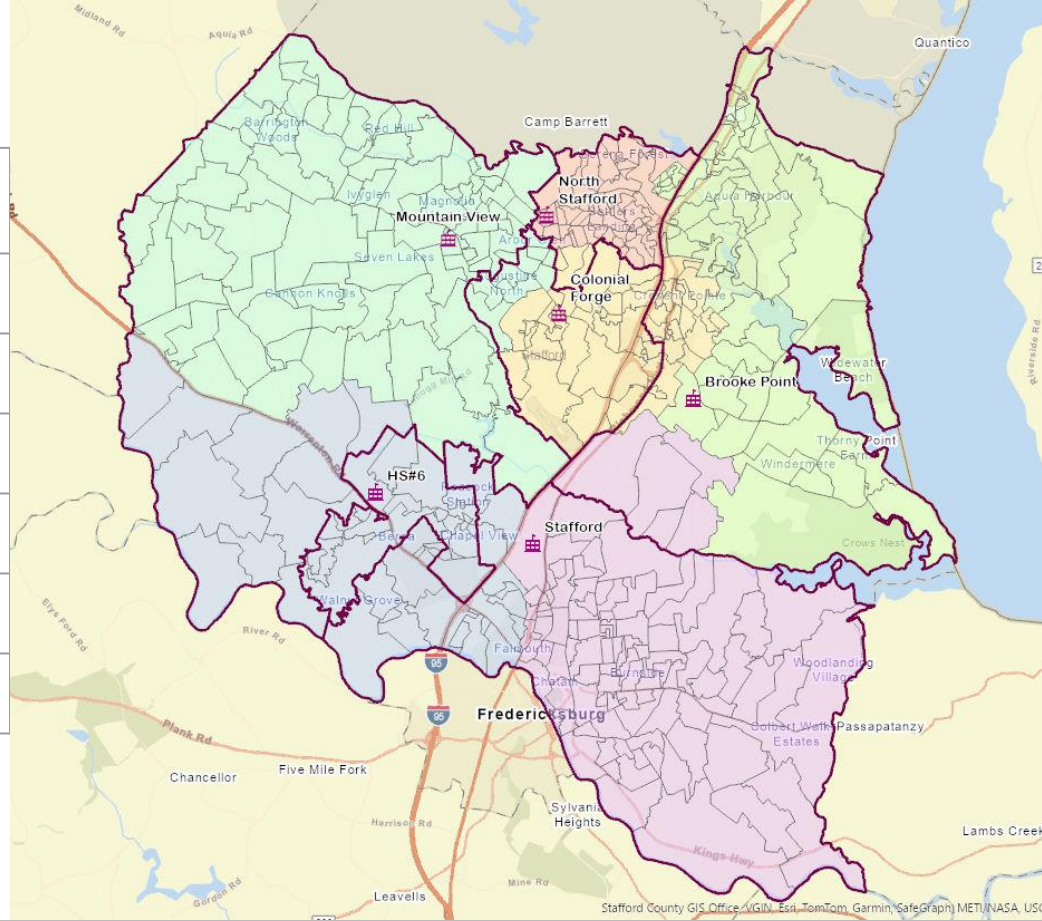
**Stafford County Public Schools**

*Inspire | Empower | Excel*

# Scenario F1

FRL = Free & Reduced Lunch  
b/c = Boundary Change

High School	Capacity Before b/c 2026	Capacity After b/c 2026	Capacity After b/c 2029	Capacity After b/c 2032	FRL% Before	FRL% After
North Stafford	105%	75%	78%	93%	51%	48%
Brooke Point	108%	86%	91%	101%	41%	44%
Colonial Forge	98%	95%	98%	106%	30%	34%
Mountain View	99%	94%	94%	94%	25%	25%
Stafford	108%	88%	91%	94%	38%	35%
HS#6	N/A	79%	86%	99%	N/A	39%



**Stafford County Public Schools**

Inspire | Empower | Excel



# Scenario F1 - Reassigned Student Estimates for 2027

Scenario F1	Brooke Point HS	Colonial Forge HS	HS#6	Mountain View HS	North Stafford HS	Stafford HS	Grand Total
Brooke Point HS	1,490	819				71	2,380
Colonial Forge HS		1,127	886	215			2,228
Mountain View HS			272	1,818			2,090
North Stafford HS	366	112			1,523		2,001
Stafford HS			587			1,816	2,403
<b>Estimated Students in 2027</b>	<b>1,856</b>	<b>2,058</b>	<b>1,744</b>	<b>2,033</b>	<b>1,523</b>	<b>1,887</b>	<b>11,102</b>

## How to read this chart:

- Brooke Point HS is estimated to have 1,490 in-boundary students, plus 366 students from North Stafford, for a grand total of 1,856 students.
- Colonial Forge HS is estimated to have 1,127 in-boundary students, plus 819 students from Brooke Point, plus 112 students from North Stafford, for a grand total of 2,058 students.
- HS#6 is estimated to receive 886 students from Colonial Forge, plus 272 students from Mountain View, plus 587 students from Stafford, for a grand total of 1,744 students.

Note: Totals are subject to rounding error.



**Stafford County Public Schools**

Inspire | Empower | Excel

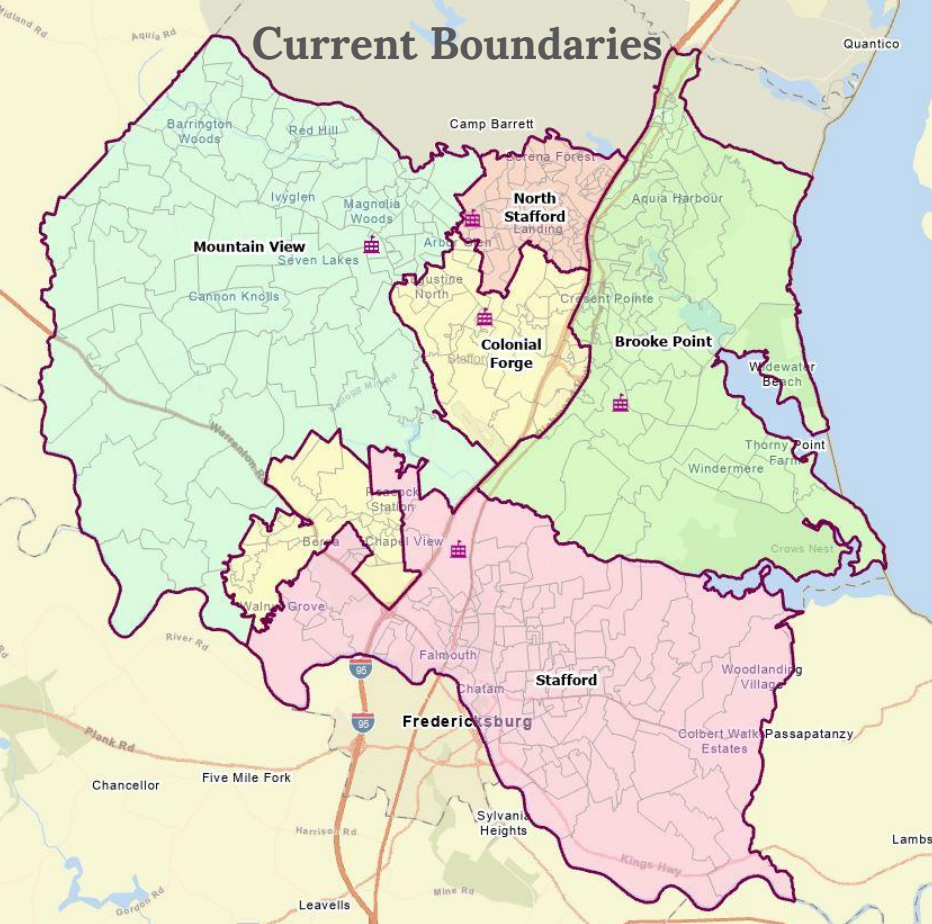
# Scenario F2



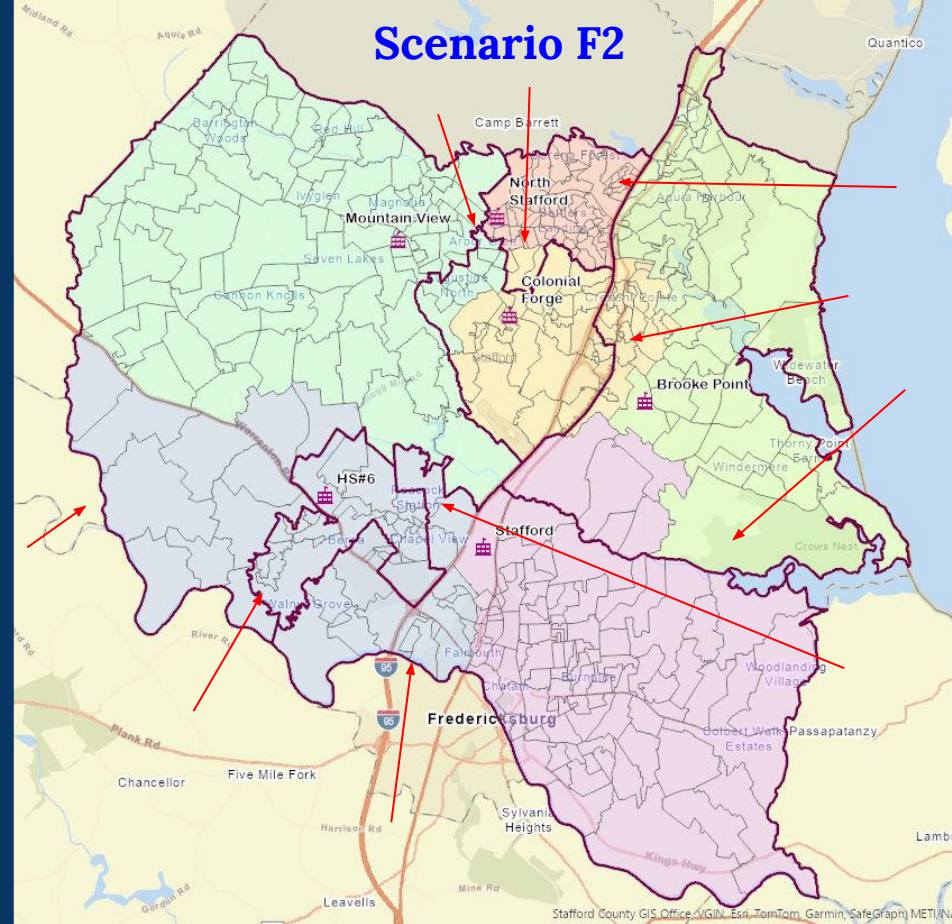
**Stafford County Public Schools**

*Inspire | Empower | Excel*

# Current Boundaries



# Scenario F2



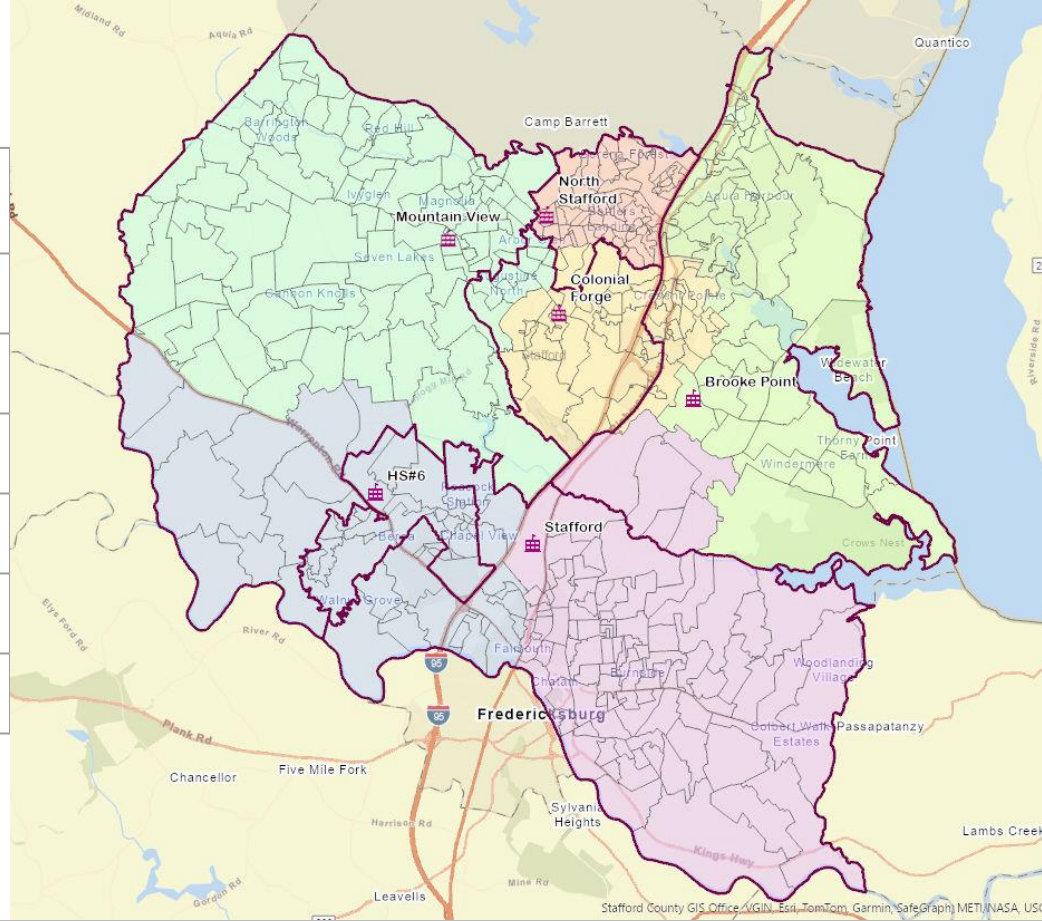
**Stafford County Public Schools**

*Inspire | Empower | Excel*

# Scenario F2

FRL = Free & Reduced Lunch  
b/c = Boundary Change

High School	Capacity Before b/c 2026	Capacity After b/c 2026	Capacity After b/c 2029	Capacity After b/c 2032	FRL% Before	FRL% After
North Stafford	105%	93%	97%	114%	51%	52%
Brooke Point	108%	69%	72%	80%	41%	38%
Colonial Forge	98%	95%	98%	106%	30%	34%
Mountain View	99%	94%	94%	94%	25%	25%
Stafford	108%	88%	91%	94%	38%	35%
HS#6	N/A	79%	86%	99%	N/A	39%



**Stafford County Public Schools**

Inspire | Empower | Excel

# Scenario F2 - Reassigned Student Estimates for 2027

Scenario F2	Brooke Point HS	Colonial Forge HS	HS#6	Mountain View HS	North Stafford HS	Stafford HS	Grand Total
Brooke Point HS	1,490	819				71	2,380
Colonial Forge HS		1,127	886	215			2,228
Mountain View HS			272	1,818			2,090
North Stafford HS		112			1,889		2,001
Stafford HS			587			1,816	2,403
<b>Estimated Students in 2027</b>	<b>1,490</b>	<b>2,058</b>	<b>1,744</b>	<b>2,033</b>	<b>1,889</b>	<b>1,887</b>	<b>11,102</b>

## How to read this chart:

- Brooke Point HS is estimated to have 1,490 in-boundary students, for a grand total of 1,855 students.
- Colonial Forge HS is estimated to have 1,127 in-boundary students, plus 819 students from Brooke Point, plus 112 students from North Stafford, for a grand total of 2,058 students.
- HS#6 is estimated to receive 886 students from Colonial Forge, plus 272 students from Mountain View, plus 587 students from Stafford, for a grand total of 1,744 students.

Note: Totals are subject to rounding error.



**Stafford County Public Schools**

Inspire | Empower | Excel

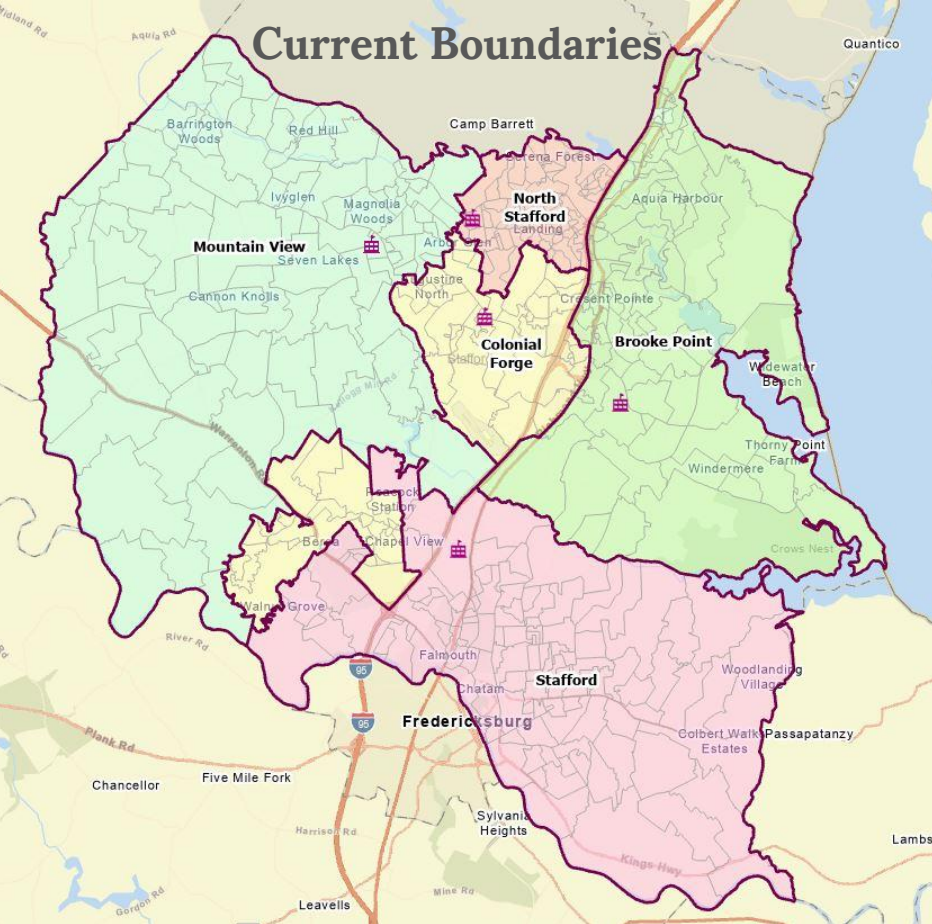
# Scenario G



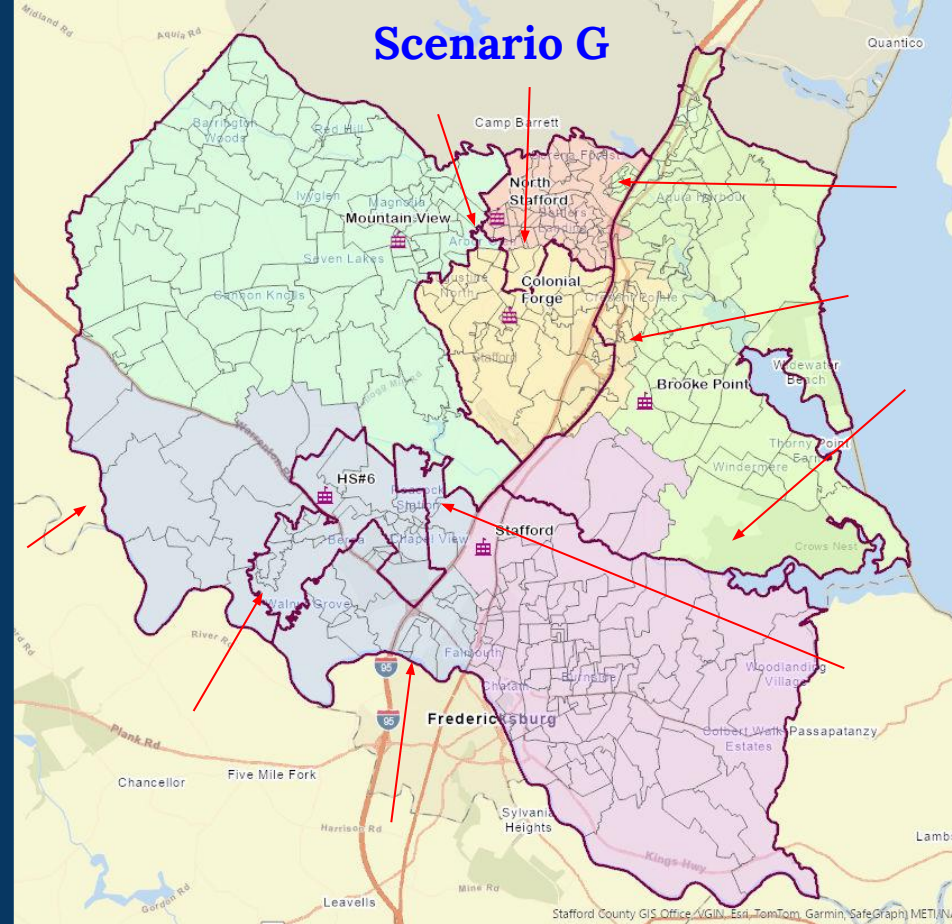
**Stafford County Public Schools**

*Inspire | Empower | Excel*

# Current Boundaries



# Scenario G



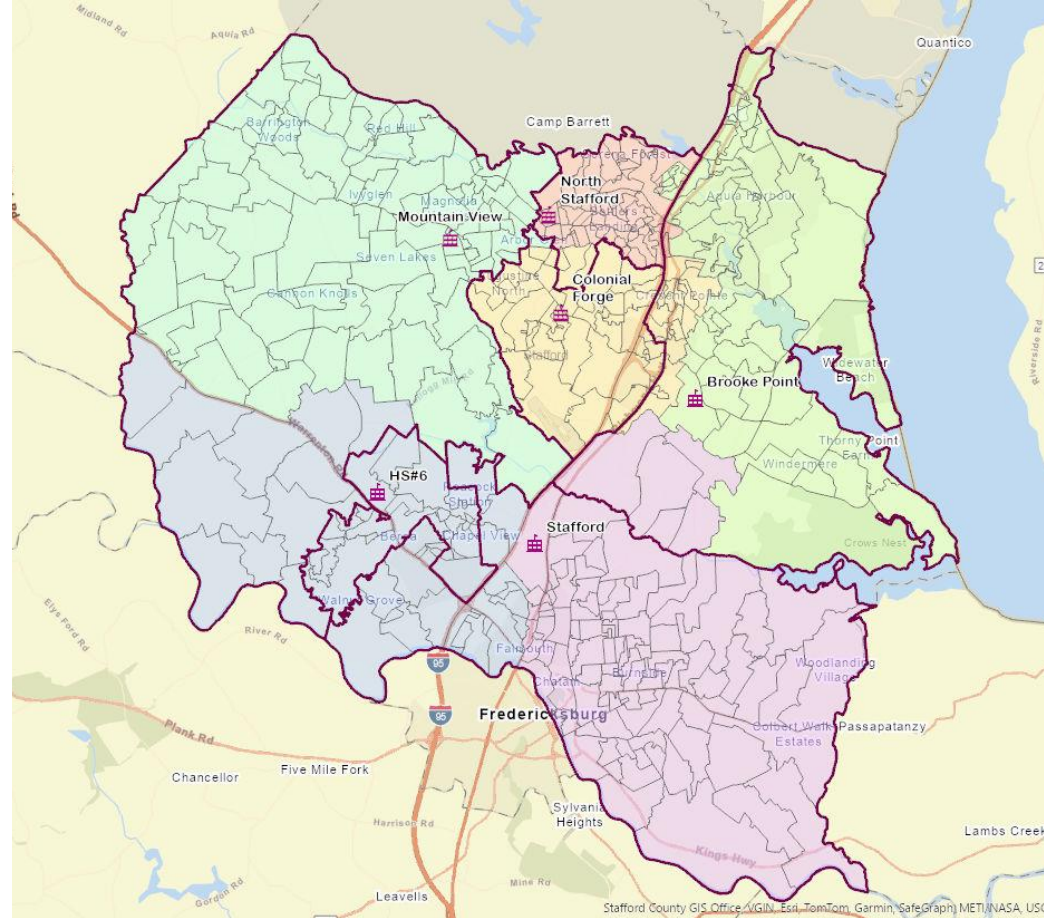
**Stafford County Public Schools**

*Inspire | Empower | Excel*

# Scenario G

FRL = Free & Reduced Lunch  
b/c = Boundary Change

High School	Capacity Before b/c 2026	Capacity After b/c 2026	Capacity After b/c 2029	Capacity After b/c 2032	FRL% Before	FRL% After
North Stafford	105%	78%	82%	98%	51%	49%
Brooke Point	108%	88%	93%	102%	41%	43%
Colonial Forge	98%	99%	100%	106%	30%	32%
Mountain View	99%	85%	87%	87%	25%	26%
Stafford	108%	88%	91%	94%	38%	35%
HS#6	N/A	79%	86%	99%	N/A	39%



**Stafford County Public Schools**

Inspire | Empower | Excel



# Scenario G - Reassigned Student Estimates for 2027

Scenario G	Brooke Point HS	Colonial Forge HS	HS#6	Mountain View HS	North Stafford HS	Stafford HS	Grand Total
Brooke Point HS	1,577	705			27	71	2,380
Colonial Forge HS		1,312	886	30			2,228
Mountain View HS			272	1,818			2,090
North Stafford HS	330	112			1,559		2,001
Stafford HS			587			1,816	2,403
<b>Estimated Students in 2027</b>	<b>1,907</b>	<b>2,129</b>	<b>1,744</b>	<b>1,848</b>	<b>1,586</b>	<b>1,887</b>	<b>11,102</b>

## How to read this chart:

- Brooke Point HS is estimated to have 1,577 in-boundary students, plus 330 students from North Stafford, for a grand total of 1,907 students.
- Colonial Forge HS is estimated to have 1,312 in-boundary students, plus 705 students from Brooke Point, plus 112 students from North Stafford, for a grand total of 2,129 students.
- HS#6 is estimated to receive 886 students from Colonial Forge, plus 272 students from Mountain View, plus 587 students from Stafford, for a grand total of 1,744 students.

Note: Totals are subject to rounding error.



**Stafford County Public Schools**

Inspire | Empower | Excel

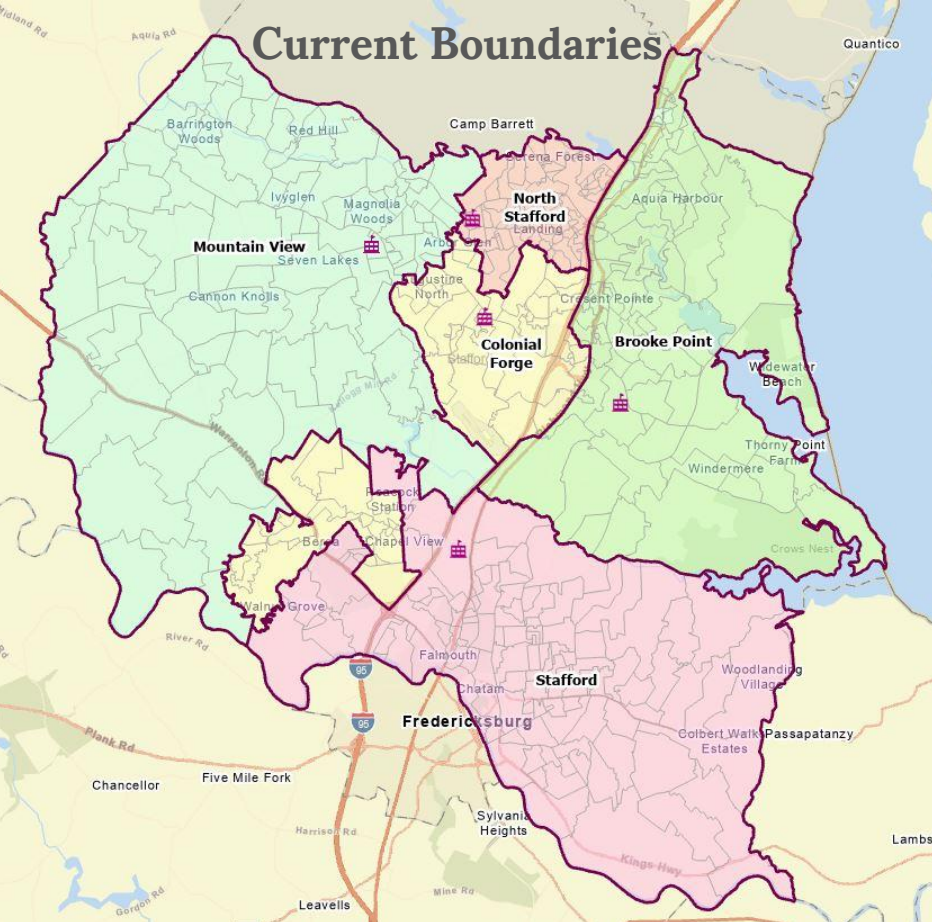
# Scenario G2



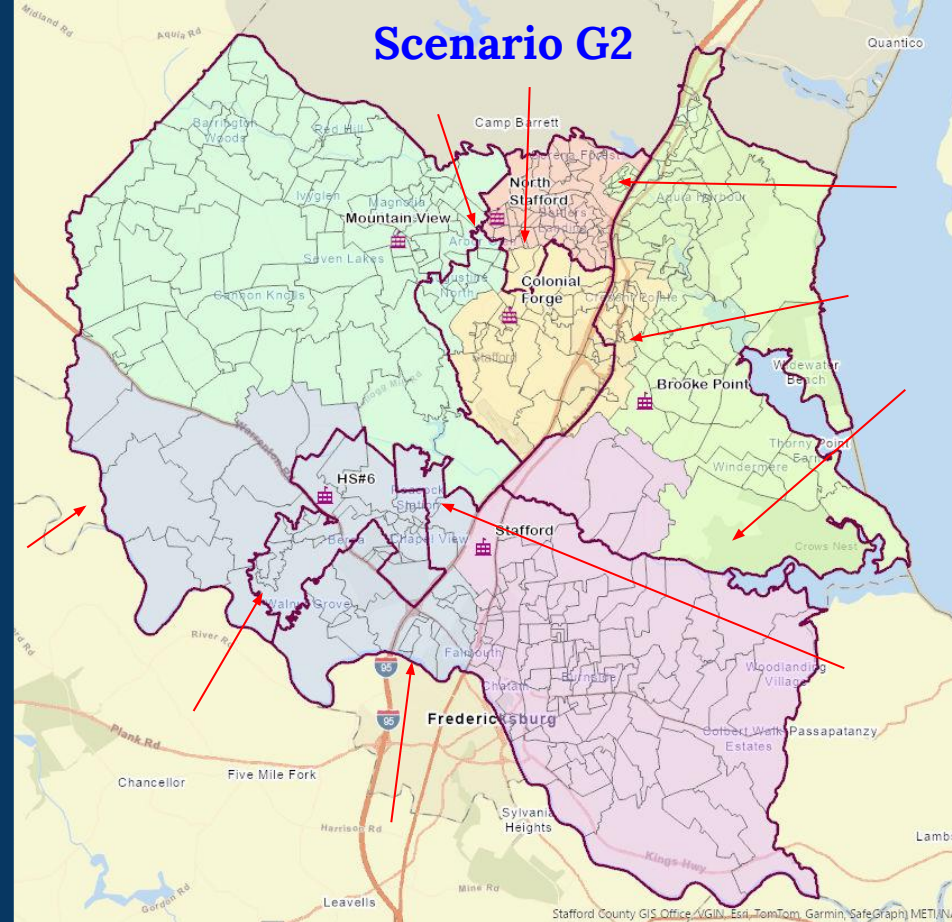
**Stafford County Public Schools**

*Inspire | Empower | Excel*

# Current Boundaries



# Scenario G2



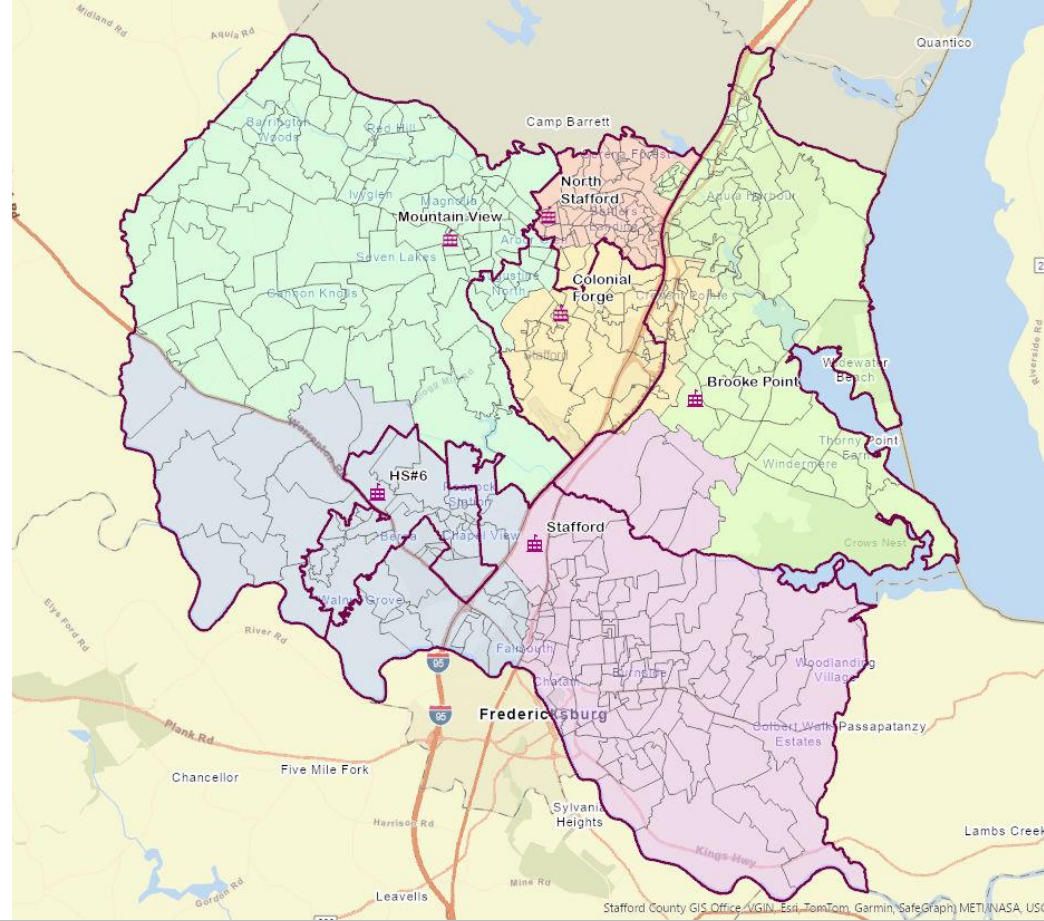
**Stafford County Public Schools**

*Inspire | Empower | Excel*

# Scenario G2

FRL = Free & Reduced Lunch  
b/c = Boundary Change

High School	Capacity Before b/c 2026	Capacity After b/c 2026	Capacity After b/c 2029	Capacity After b/c 2032	FRL% Before	FRL% After
North Stafford	105%	75%	78%	93%	51%	48%
Brooke Point	108%	91%	96%	107%	41%	43%
Colonial Forge	98%	90%	93%	100%	30%	33%
Mountain View	99%	94%	94%	94%	25%	25%
Stafford	108%	88%	91%	94%	38%	35%
HS#6	N/A	79%	86%	99%	N/A	39%



**Stafford County Public Schools**

Inspire | Empower | Excel

# Scenario G2 - Reassigned Student Estimates for 2027

Scenario G2	Brooke Point HS	Colonial Forge HS	HS#6	Mountain View HS	North Stafford HS	Stafford HS	Grand Total
Brooke Point HS	1,603	705				71	2,380
Colonial Forge HS		1,127	886	215			2,228
Mountain View HS			272	1,818			2,090
North Stafford HS	366	112			1,523		2,001
Stafford HS			587			1,816	2,403
<b>Estimated Students in 2027</b>	<b>1,969</b>	<b>1,944</b>	<b>1,744</b>	<b>2,033</b>	<b>1,523</b>	<b>1,887</b>	<b>11,102</b>

## How to read this chart:

- Brooke Point HS is estimated to have 1,603 in-boundary students, plus 366 students from North Stafford, for a grand total of 1,970 students.
- Colonial Forge HS is estimated to have 1,127 in-boundary students, plus 705 students from Brooke Point, plus 112 students from North Stafford, for a grand total of 1,944 students.
- HS#6 is estimated to receive 886 students from Colonial Forge, plus 272 students from Mountain View, plus 587 students from Stafford, for a grand total of 1,744 students.

Note: Totals are subject to rounding error.



Stafford County Public Schools

Inspire | Empower | Excel

# Scenario Comparison Charts



**Stafford County Public Schools**

*Inspire | Empower | Excel*

# Scenario Comparison - Capacity Estimates for 2026

High School	Capacity Before Boundary Change 2026	After Boundary Change				
		E	F1	F2	G	G2
North Stafford	105%	79%	75%	93%	78%	75%
Brooke Point	108%	89%	86%	69%	88%	91%
Colonial Forge	98%	92%	95%	95%	99%	90%
Mountain View	99%	91%	94%	94%	85%	94%
Stafford	108%	88%	88%	88%	88%	88%
High School #6	N/A	79%	79%	79%	79%	79%

Note: Capacity utilization estimates rounded to the nearest whole number.



**Stafford County Public Schools**

*Inspire | Empower | Excel*

# Scenario Comparison - Capacity Estimates for 2029

High School	After Boundary Change				
	E	F1	F2	G	G2
North Stafford	82%	78%	97%	82%	78%
Brooke Point	95%	91%	72%	93%	96%
Colonial Forge	93%	98%	98%	100%	93%
Mountain View	92%	94%	94%	87%	94%
Stafford	91%	91%	91%	91%	91%
High School #6	86%	86%	86%	86%	86%

Note: Capacity utilization estimates rounded to the nearest whole number.





# Scenario Comparison - Capacity Estimates for 2032

High School	After Boundary Change				
	E	F1	F2	G	G2
North Stafford	97%	93%	114%	98%	93%
Brooke Point	105%	101%	80%	102%	107%
Colonial Forge	100%	106%	106%	106%	100%
Mountain View	92%	94%	94%	87%	94%
Stafford	94%	94%	94%	94%	94%
High School#6	99%	99%	99%	99%	99%

Note: Capacity utilization estimates rounded to the nearest whole number.



# Scenario Comparison - Estimated % Free & Reduced Lunch

High School	Free & Reduced % <b>BEFORE</b> Boundary Change	After Boundary Change				
		E	F1	F2	G	G2
North Stafford	51%	48%	48%	52%	49%	48%
Brooke Point	41%	43%	44%	38%	43%	43%
Colonial Forge	30%	32%	34%	34%	32%	33%
Mountain View	25%	26%	25%	25%	26%	25%
Stafford	38%	35%	35%	35%	35%	35%
High School#6	N/A	39%	39%	39%	39%	39%

Note: Estimates rounded to the nearest whole number.



# Scenario Comparison - Estimated % English Language Learner

High School	ELL % BEFORE Boundary Change	After Boundary Change				
		E	F1	F2	G	G2
North Stafford	15%	11%	11%	15%	11%	11%
Brooke Point	9%	13%	13%	8%	13%	13%
Colonial Forge	7%	8%	8%	8%	8%	8%
Mountain View	5%	6%	6%	6%	6%	6%
Stafford	10%	8%	8%	8%	8%	8%
High School #6	N/A	12%	12%	12%	12%	12%
<b>High School Average</b>	9%	9%	9%	9%	9%	9%

Note: Estimates rounded to the nearest whole number.

**Chart revised as of 12/22/2024**

Notes:

1. This chart reflects revised ELL numbers provided by IT Department on 12/11/2024.
2. The estimated after boundary change ELL percentages are based on current “resident” students living within the proposed high school zones (by scenario) as of 9/30/2024.



# Scenario Comparison - Estimated % Special Education Students

High School	SPED % BEFORE Boundary Change	After Boundary Change				
		E	F1	F2	G	G2
North Stafford	12%	13%	13%	13%	13%	13%
Brooke Point	14%	13%	13%	14%	13%	13%
Colonial Forge	14%	15%	14%	14%	14%	14%
Mountain View	11%	11%	12%	12%	12%	12%
Stafford	15%	14%	14%	14%	14%	14%
High School #6	12%	14%	14%	14%	14%	14%

Note: Estimates rounded to the nearest whole number.



# High School #6 Redistricting



School Board Meeting  
January 14, 2025



**Stafford County Public Schools**

*Inspire | Empower | Excel*