

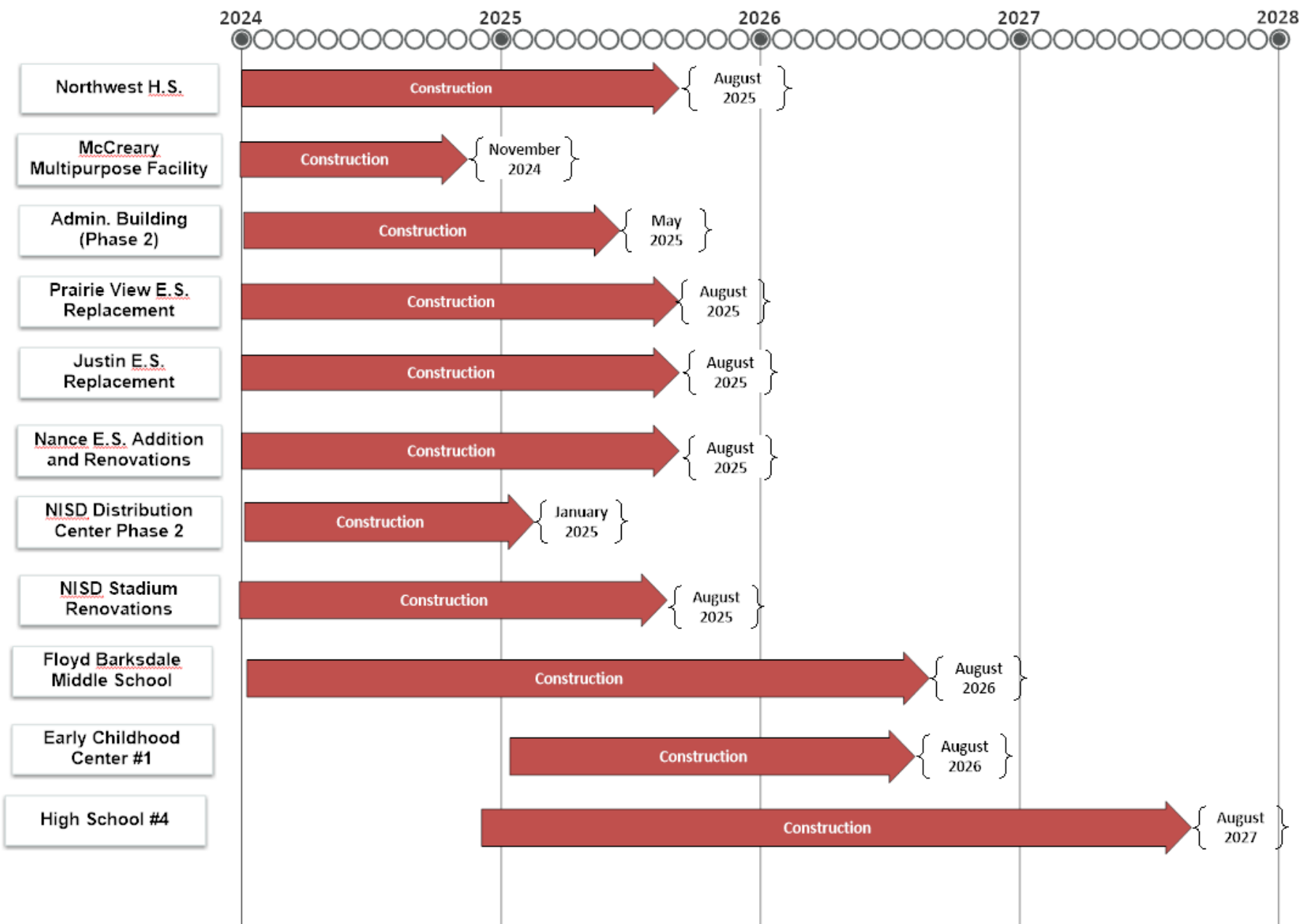
Facilities, Planning and Construction

January 13, 2025



Construction Update:

- Northwest HS – Renovations & Additions – 89% Complete
- McCreary Multipurpose Facility – 99% Complete (no photos)
- New NISD Administration Building – 60% Complete
- Prairie View Replacement Elementary School – 55% Complete
- Justin Replacement Elementary School – 40% Complete
- Nance ES – Additions and Renovations – 35% Complete
- NISD Distribution Center – Phase 2 Renovations – 90% Complete (no photos)
- NISD Stadium Renovations - 55% Complete (no photos)
- Barksdale Middle School #8 – 15% Complete
- High School #4 – 2% Complete

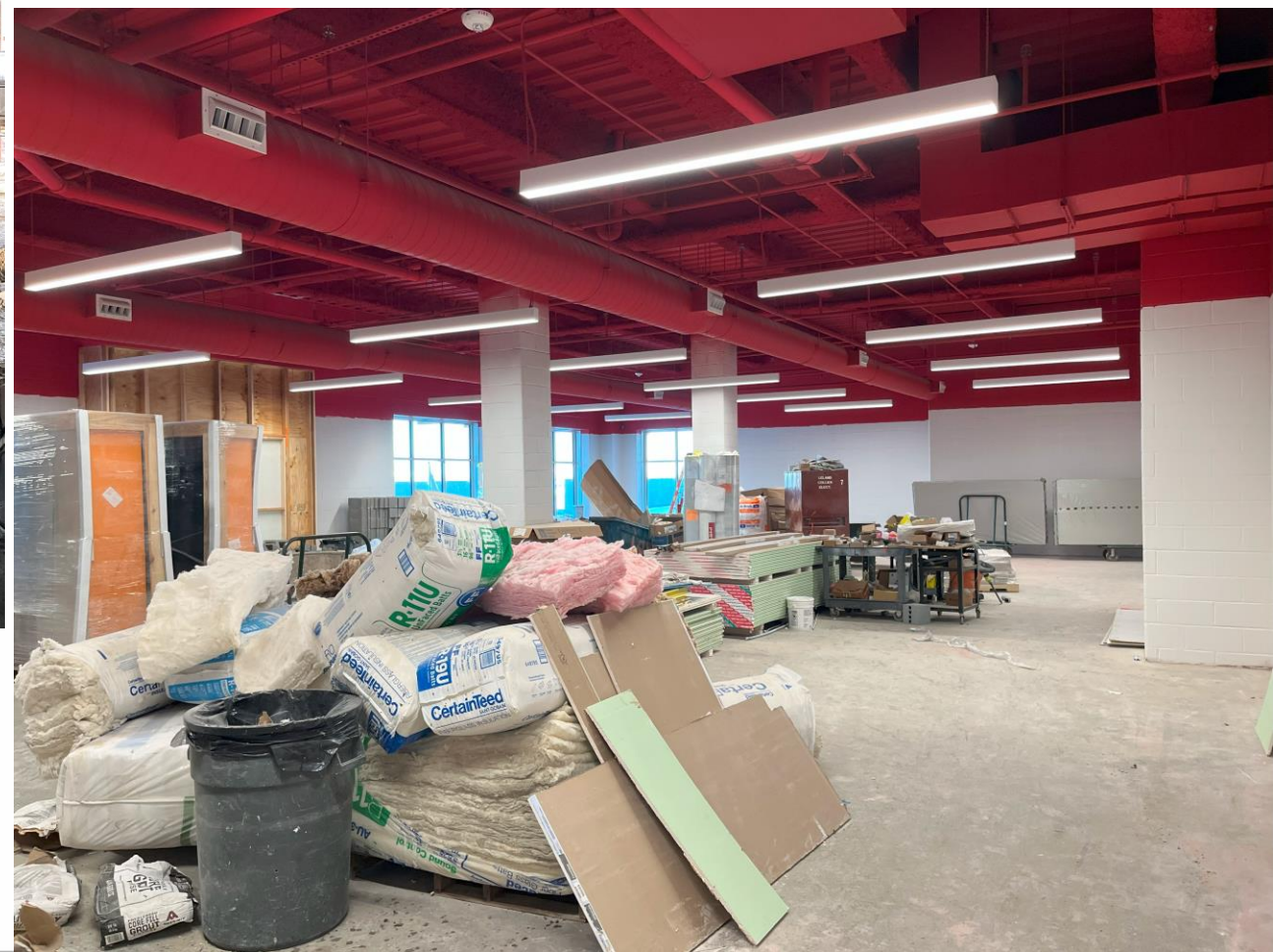
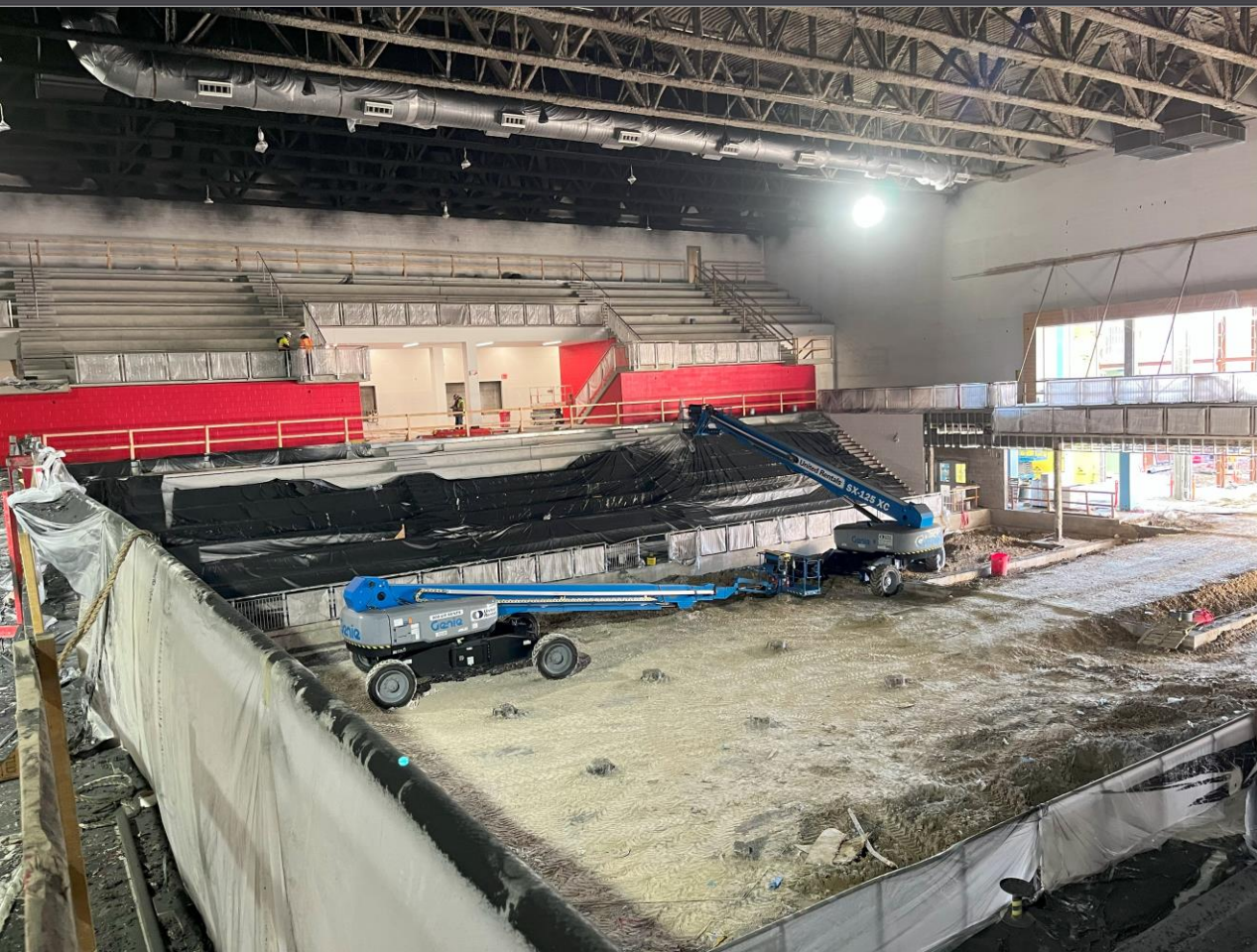


Northwest HS – Renovations & Additions













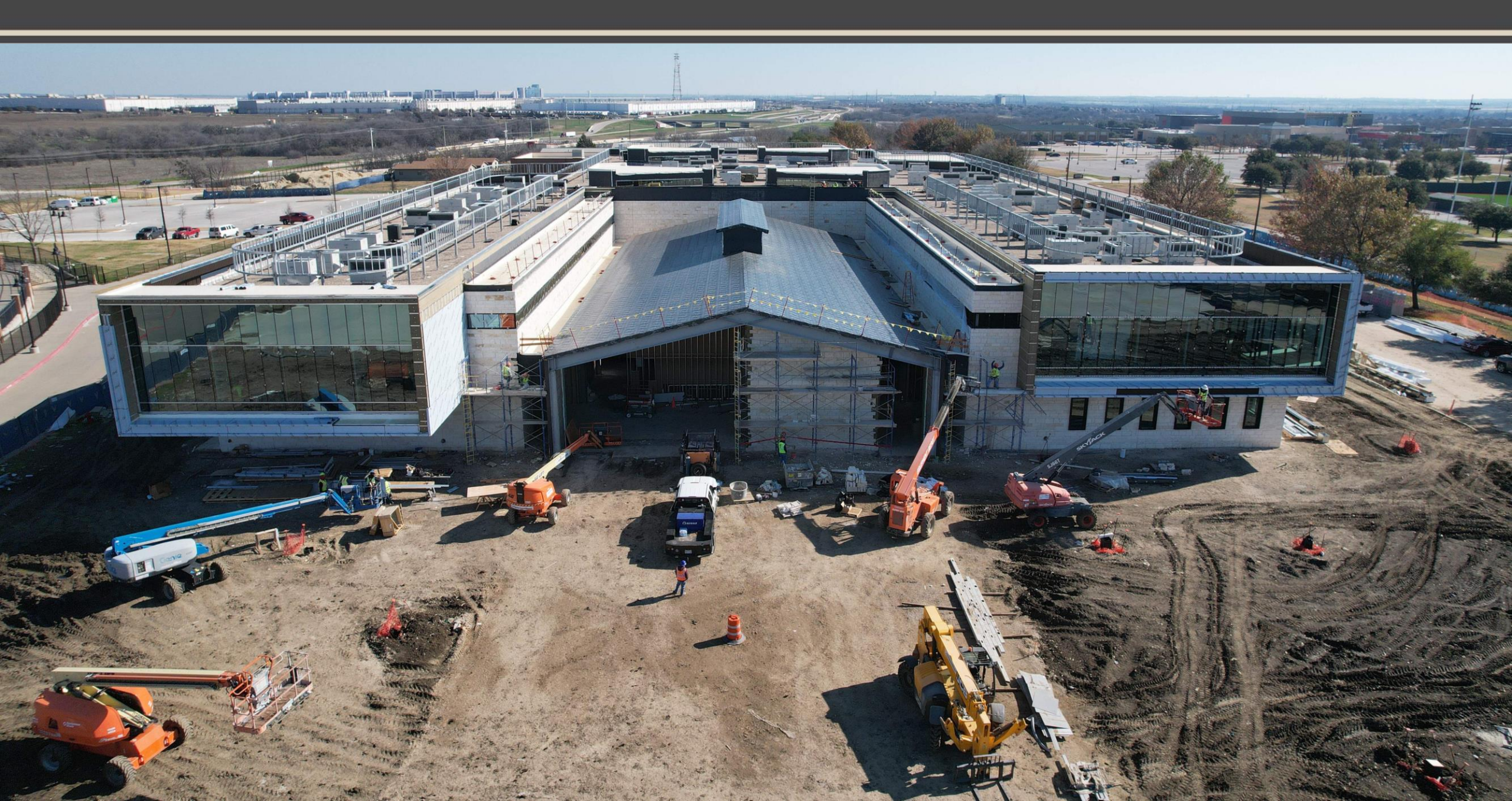




New NISD Administration Building















Prairie View Replacement ES

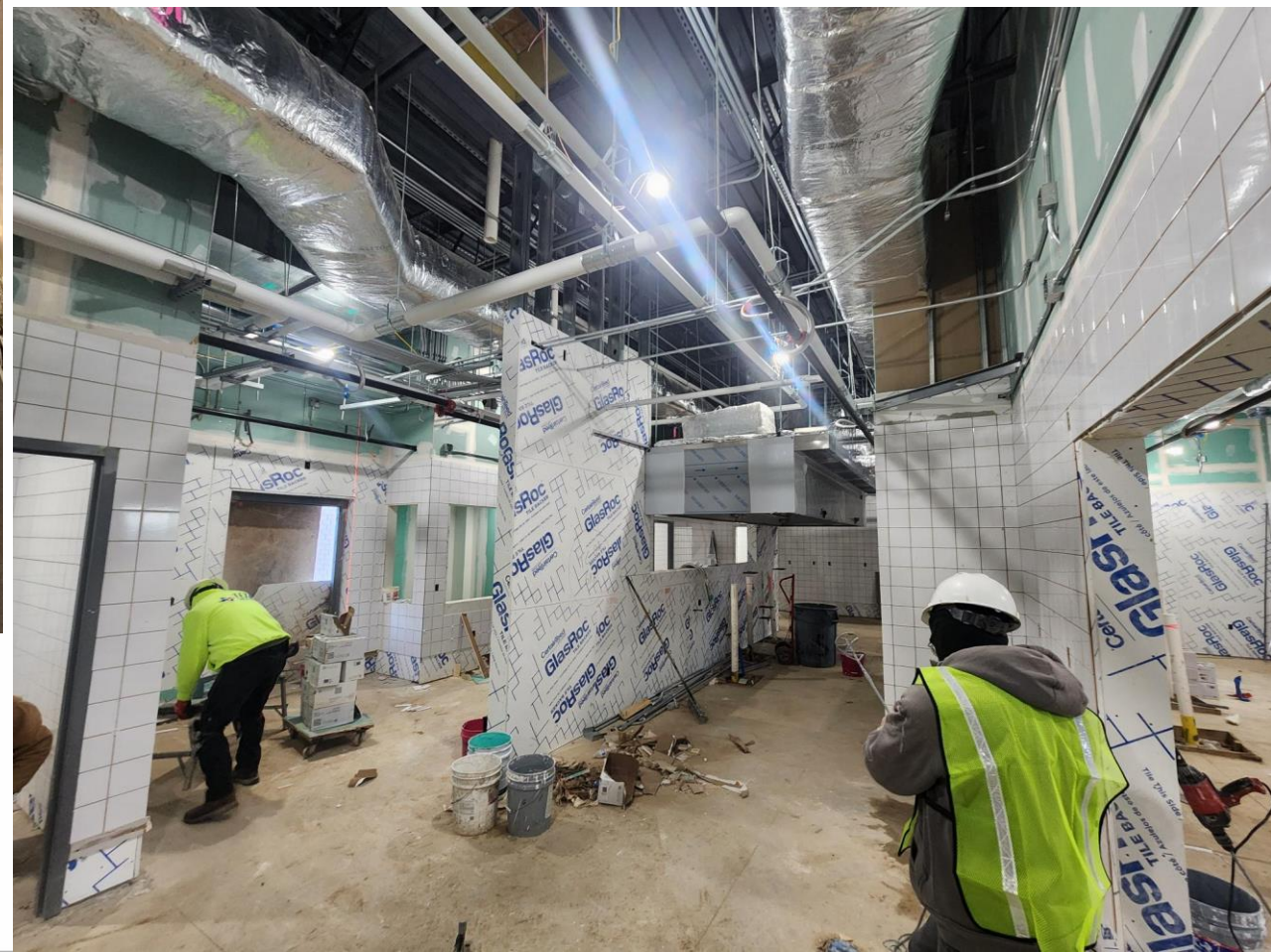












Justin Replacement ES

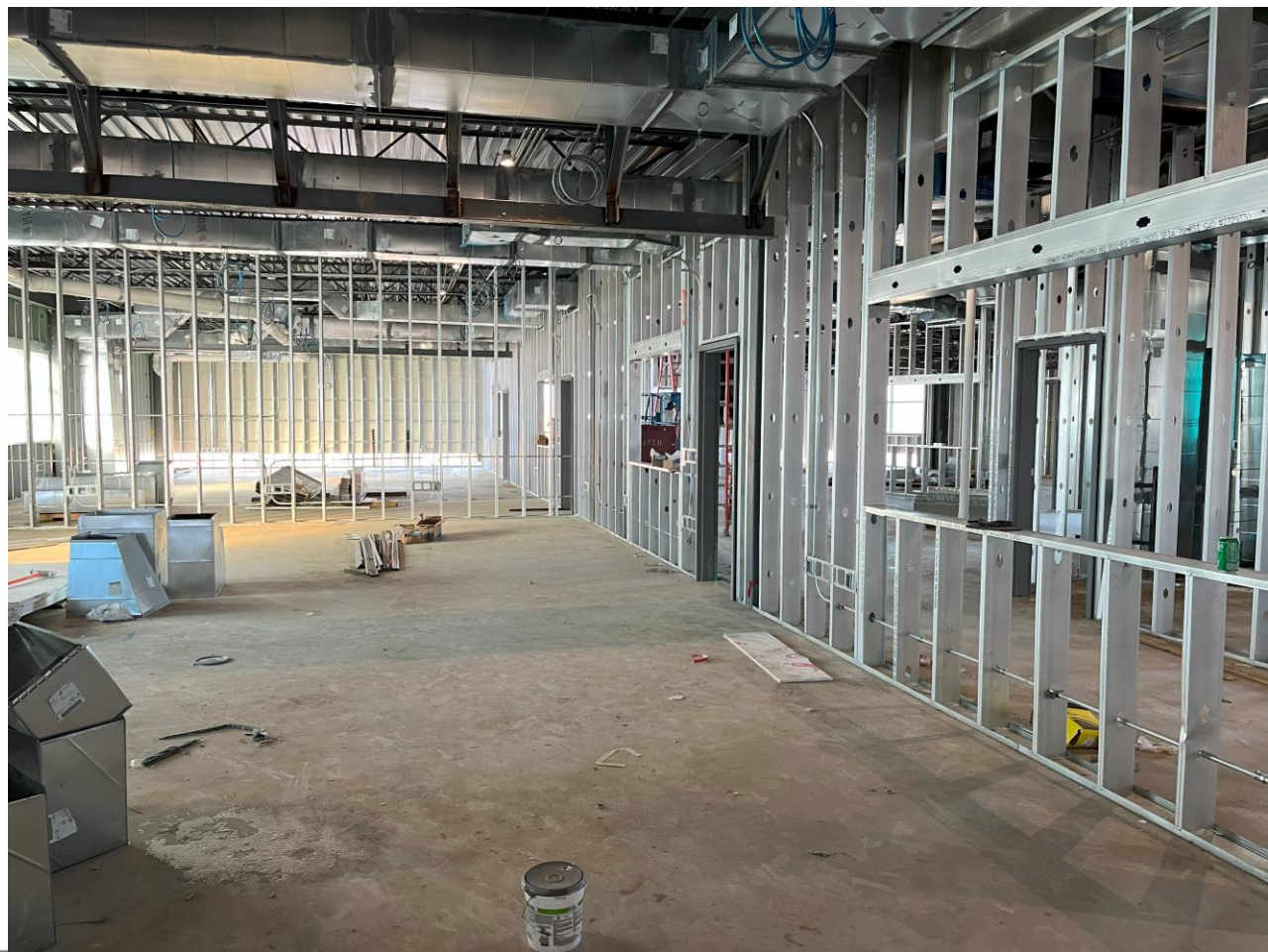












Nance ES Additions & Renovations









Barksdale Middle School #8





High School #4





Questions?

www.nisdtxconstruction.org