



Adopted Budget 2024-25

# LCAP at a Glance

## LOCAL CONTROL & ACCOUNTABILITY PLAN

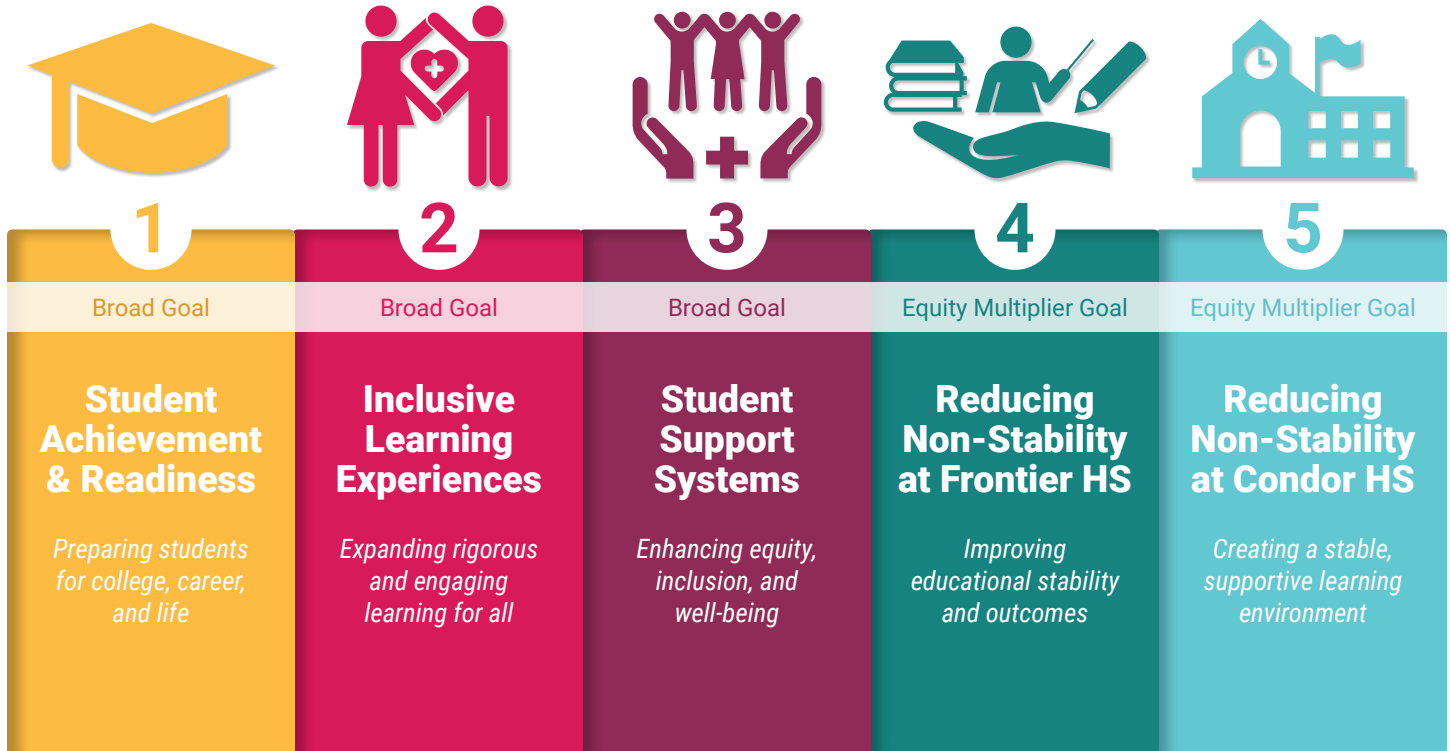
The Local Control and Accountability Plan (LCAP) is our roadmap for ensuring every student receives a high-quality education.



**OXNARD UNION**  
HIGH SCHOOL DISTRICT



### LCAP GOALS

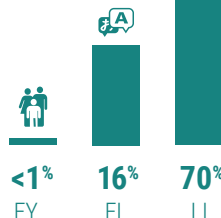


### BY THE NUMBERS



### High Needs

students groups, such as foster youth, English learners, and low income students, make up a significant portion of Oxnard UHSD's student body.

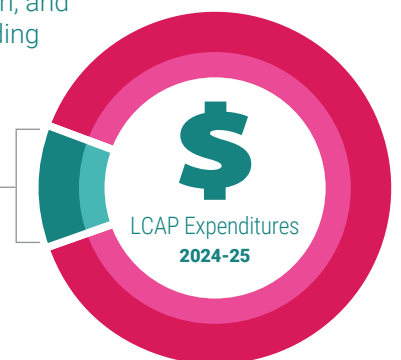


**\$46,493,571**

**In Total LCAP Expenditures**

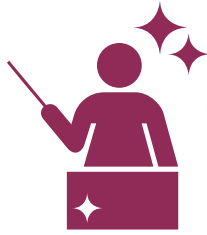
**\$5,080,000** of this amount is reserved for targeted support to English learners, foster youth, and low-income students, providing focused resources where they're needed most.

### Targeted Expenditures





**16,040**  
9th-12th grade  
**STUDENTS**



**1,786**  
**EMPLOYEES**



**13**  
**SCHOOLS**  
8 Comprehensive  
4 Alt. Education  
1 Adult School

## ACTIONS & SERVICES FOR 2024-2025

1	2	3	4	5
<b>Student Achievement &amp; Readiness</b>	<b>Inclusive Learning Experiences</b>	<b>Student Support Systems</b>	<b>Reducing Non-Stability at Frontier HS</b>	<b>Reducing Non-Stability at Condor HS</b>
<ul style="list-style-type: none"> <li>Professional Development</li> <li>Welcome Centers</li> <li>English Learner Literacy PD</li> <li>Language Acquisition Programs</li> <li>AP &amp; IB Programs</li> <li>State Seal Recognitions</li> <li>Technology Coaches</li> <li>Family Communication</li> <li>Intervention Counselors</li> <li>Academic Intervention &amp; Remediation</li> </ul>	<ul style="list-style-type: none"> <li>A-G Pathways Support Programs</li> <li>Academic Support for A-G Courses</li> <li>CTE Teacher Support Initiatives</li> <li>CTE Access and Student Participation</li> <li>Work-Based Learning Opportunities</li> <li>FAFSA/CADAA Workshops for Financial Aid</li> <li>AP &amp; IB Programs</li> <li>Access to AP/IB Testing Resources</li> <li>Comprehensive Counseling Services</li> </ul>	<ul style="list-style-type: none"> <li>Restorative Practices and PBIS</li> <li>MTSS and Wellness Programs</li> <li>Chronic Absenteeism Interventions</li> <li>Cal-SAFE Program for Expectant and Parenting Students</li> <li>Student Surveys</li> <li>School Safety Enhancements</li> <li>Music and Athletics</li> <li>Student Voice and Leadership Opportunities</li> <li>Parent Engagement Initiatives</li> </ul>	<p><i>At Frontier HS...</i></p> <ul style="list-style-type: none"> <li>Professional Development for Educators</li> <li>Tutoring Services for Student Support</li> <li>Professional Collaborative Learning Communities</li> <li>Multi-Tiered System of Supports (MTSS) Implementation</li> <li>Bilingual Paraeducators in Classrooms</li> <li>Enhancing Student Access through Transportation Services</li> </ul>	<p><i>At Condor HS...</i></p> <ul style="list-style-type: none"> <li>Professional Development Programs</li> <li>Tutoring Services for Academic Improvement</li> <li>Professional Collaborative Learning Opportunities</li> <li>Multi-Tiered System of Supports (MTSS) Strategies</li> </ul>
<b>\$23,887,500</b>	<b>\$4,065,000</b>	<b>\$17,902,444</b>	<b>\$388,627</b>	<b>\$250,000</b>

**CONTACT US:**

