



BARNWELL ELEMENTARY

9425 Barnwell Rd Johns Creek, GA 30022 470-254-4960

Fulton
County Schools
Where Students Come First

A Note from the Principal, Takisha Benning December 5, 2024

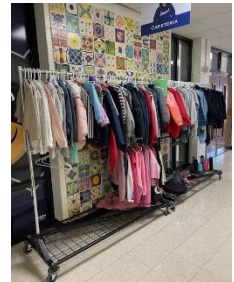
New Information

[Giving Tree Collection – December 9th – 11th](#)

This holiday season, our Barnwell Bears can spread joy to families in need. From December 9th to 11th, please support the North Fulton Community Charities by donating a **NEW, UNWRAPPED** item or gift card to help stock their Toyland Shop. Please click [here](#) for more information and gift ideas.

[Lost and Found](#)

Our lost and found is beginning to fill up with coats, sweatshirts, water bottles, and lunch boxes. Please be sure to label your child's items to allow items to be returned to students. In addition, encourage your student(s) to stop by our lost and found to collect any item(s) they have misplaced. All unclaimed items will be donated to charity during winter break.



[FCS Schools Closed for Winter Break – December 23rd – January 6th](#)

All FCS Schools will be closed for Winter Break beginning December 23, 2024, to January 6, 2025. Please click [here](#) for the FCS 2024- 2025 school calendar.

[All Pro Dad's Breakfast](#)

On **Friday, December 13th at 6:45 AM**, Barnwell dads and students are invited for breakfast in the cafeteria. Take a chance to connect with your student, their school, and discuss topics that help students to build character. *(No child should feel left out - Moms or Guardians are welcome too)* **PLEASE RSVP** at allprodadchapters.com/chapters/4353

[Change of School Assignment Information](#)

Parents, Fulton County Schools is now using a new term for school choice: "Change of School Assignment." Last spring, the Fulton County School Board revised its policy governing student transfers and changes of school assignment. Any student wishing to attend a school outside of their home attendance boundary will need to follow the new Change of School Assignment (COSA) process and timeline. The process applies to all transfer-related programs, including previous options like hardship transfers, open enrollment, transfers for employees' children, Georgia Special Needs Scholarship Program transfers, and requests to schools offering International Baccalaureate or magnet programs. A list of schools accepting transfers will be published on the COSA website on December 9, 2024. Parents can apply during the application window of December 9, 2024, through January 15, 2025. Learn more at www.fultonschools.org/COSA.

Recurring School and Community News

Don't Miss the Beargram Fun! 🐻✉️

Stay informed and bring some joy to your inbox with the Beargram! Our bi-weekly updates will keep you connected to all the exciting happenings at Barnwell—from the thrills of Barnival, the joy of the Date with your Daughter Dance, and inspiring moments during STEAM Week, to the spook-tacular festivities of Trunk-or-Treat.

Signing up is simple! Visit barnwellpto.membershiptoolkit.com to create your profile and opt-in for emails, or reach out to communications@barnwellpto.org for assistance. No donation is required for you to join membership toolkit to receive our PTO updates!

To stay even more connected, follow us on social media: [Facebook](#) | [Instagram](#)

Join the fun—sign up for the Beargram today! 🐻👉

Be Smart Virtual Presentation

Please click [here](#) to join the BE SMART presentation to help raise safety awareness. The presentation will be December 12th 6:00 – 6:30 PM.

Traffic, Bus Lane, and Carpool Safety

As you navigate the area around Barnwell Elementary School, we kindly request that you exercise extra caution. If you are walking your child to school, please cross at the designated crosswalk with the assistance of the JCPD traffic officer. For those dropping students in the carpool lanes (front or side), please be extra vigilant and follow the instructions provided by our staff stationed at those locations. Be mindful of students and parents who may be walking in the parking lot or crossing the crosswalk. Let's keep everyone safe!

Student Pickup/Building Entry

A driver's license or government issued ID is required for all student checkouts and any entry into the building. Please have your ID available to present to the camera when you ring the bell to be buzzed in.

Volunteer Protocol

All Mystery Readers and School Volunteers are required to complete the Volunteer Protocol before coming to school. To initiate the process, please complete the child abuse reporting training and the online registration by clicking [here](#). Use your legal name as it appears on your government identification during registration. The training is self-paced, and your government ID will be required upon your arrival at school.

After completing the training and registration, kindly email Susan Agerton at Agertons@fultonschools.org with your legal name to ensure your application is approved before your visit.

Changes In Transportation

Any changes in dismissal transportation must be submitted to the student's teacher using our [dismissal change form](#) which is available on our school website. If there is a last-minute change in dismissal, please call the front office. Students are only allowed to ride the bus assigned to their home address.

Dates to Remember

EVENT	DATE	TIME	LOCATION
Giving Tree Collection	12/9 – 12/11	During morning arrival	Bus and Carpool Lanes
All Pro Dad's Breakfast	12/13	6:45 AM-7:30 AM	Cafe
Student of the Month Celebration	12/18	7:00 AM-7:30 AM	Cafe
Wear Scarf or Winter Hat	12/16	School Day	-----
Wear Flannel/Plaid Shirt	12/17	School Day	-----
Wear Lovely or Ugly Holiday Sweater	12/18	School Day	-----
Wear Reindeer Antlers	12/19	School Day	-----
Pajama Day	12/20	School Day	-----

Administrative Team

Throughout the year, I encourage you to reach out to your child's teacher with any classroom questions or to our Administrative Team with any school-wide questions:

- Renee Morris Diggelmann, Assistant Principal – Diggelmannr@fultonschools.org
- Alysia Muse, Curriculum Support Teacher - Musea@fultonschools.org
- Chelsea Garcia, School Counselor – GarciaC2@fultonschools.org
- Eden Griffin, Instructional Support Teacher – GriffinE1@fultonschools.org
- Takisha Benning, Principal – Benning@fultonschools.org

Quick Links

[Attendance Options](#)

[Bus Stop Information](#)

[Here Comes the Bus Info](#)

[Dismissal Change Form](#)

[Birthday Celebration Form](#)

Takisha Benning
Principal