

January  
8th

# Kindergarten Information Night

Welcome to Somerset!



Cathy Elder, Principal

Leif Moe-Lobeda, Assistant Principal



## Getting to know you!

## How many of you....

### Went to elementary school...

- In Bellevue
- In Washington
- In the United States
- Outside the United States

### Are...

- Bilingual
- Trilingual
- Multilingual

## How many of you....

Have older children at Somerset or other BSD schools?

Are new to Somerset

Have your first child entering school next year?

Welcome

Somerset Superstars  
High School Graduating Class of 2038





# Kindergarteners Soar

## Tonight's Focus

- Somerset overview
- Kindergarten Information
- Kindergarten Readiness
- Registration Process



# Bellevue School District

## Somerset Elementary

### **Vision**

To affirm and inspire each and every student to learn and thrive as creators of their future world.

### **Mission**

To serve each and every student academically, socially, and emotionally, through a rigorous and relevant education that is innovative and individualized.

As a learning community that values one another's humanity, we provide courageous support for an equitable and exceptional education for all students.

# Strong Sense of Belonging

78% of students reported a strong Sense of Belonging in spring of 2024

## Goals

- Ensure kids feel affirmed in their unique cultural, linguistic and racial identity
- Build cultural competency for all students to be better global citizens
- Celebrate strengths of individuals, classrooms and community

## Panorama Student Survey (3<sup>rd</sup>-5<sup>th</sup> graders)

- 95% feel the school respects students of all cultures
- 86% of students report a strong of feeling safe
- 78% feel they belong a lot or completely
- 17% feel they belong somewhat

# Educational Excellence

## State Testing Scores 2023-2024

90% of Somerset students (3<sup>rd</sup>-5<sup>th</sup> grade) met standard in English Language Arts.

90 % of Somerset students (3<sup>rd</sup>-5<sup>th</sup> grade) met standard in Math.

92% of Somerset 5<sup>th</sup> graders met standard on the science state assessment





# Somerset by the numbers

756 students  
80+ staff



- District target for k: 22
- Each grade has 4 or more classrooms
- Class size range: 19-30
- 23/31 classes are at or under BSDs target size
- Bellevue's largest elementary school by over 150 students



# School Wide Activities

Birthday Club, monthly Fun Run with principals to celebrate birthdays

Principal and Special Staff Read aloud

Friendship Groups

Unity and Kindness Week

Collecting and Sharing Family Stories





# Free Full Day Kindergarten

- 6 Hours and 25 minutes ( 2 hours shorter on Wednesdays)
- Reading, Writing, Social Studies, Science, Specialist Classes
- Transportation is provided to students on an established bus route.
- Before and after school care provided by a community partner.
  - Right at School <https://www.rightatschool.com/districts/bellevue-wa/>

# Somerset SuperSTARS



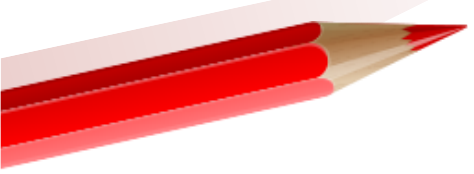
### SAFE

### TRUSTWORTHY

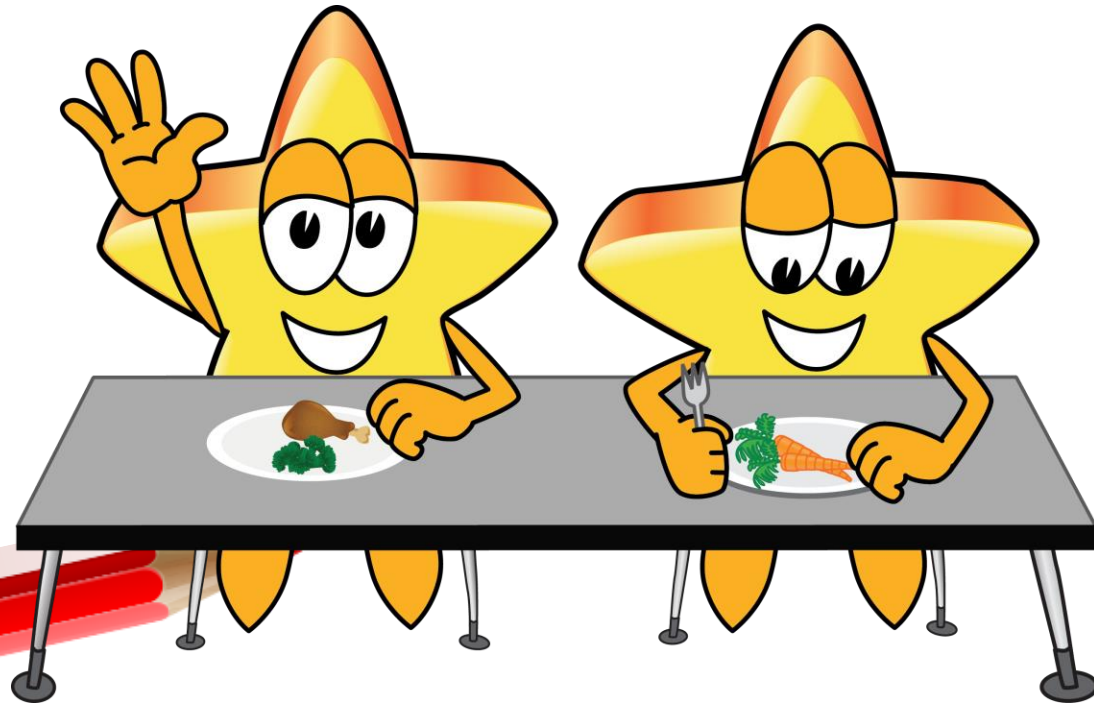
### ACCEPTING

### RESPECTFUL

### SOLVE PROBLEMS



# Lunch



- Students eat lunch in the cafeteria with adult supervision
- About half the students buy lunch from school, others bring lunch from home.
- Best way to prepare for lunch success, start letting your child open their own containers, Ziploc bags, etc.

# Specialist

Librarian,  
PE  
Music  
Art



# Student Success Team

- Full time counselor
- Multi-language Facilitator
- School Psychologist
- Special Education team, including speech
- Instructional Coach
- PBIS Coach





## Before & After School Care

## Right at School (RAS)


- Bellevue School District partners with RAS to provide high quality before and after school care.
- More information can be found their website.
- <https://www.rightatschool.com/districts/bellevue-wa/>
- Boys and Girls Club-South Bellevue Boys and Girls Club





# Kindergarten Instruction



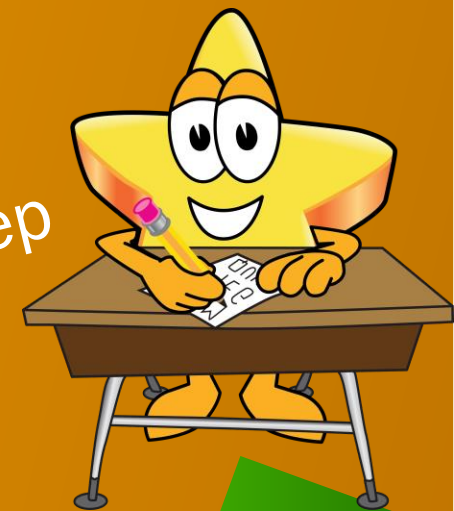
- 
- Literacy: Reading & Writing
  - Math: Comparing Numbers, Addition/Subtraction, Shapes, Story Problems, Math Talk, Explaining and Sharing Thinking/Understanding
  - Social Studies: Me and My World, Families, Friends, Community
  - Social Emotional Learning: Feelings & Regulation
  - Science: Earth, Physical, Life & Engineering
  - Specialists: Art, Music, P.E. & Library

# K curriculum



A full day of learning & growing

Math: Illustrative Math  
Literacy: phonemic awareness, phonics, comprehension, fluency, vocabulary  
Science: Foss Science  
Social studies: Social Studies Alive  
Social emotional learning: Second Step



# Daily Schedule

- 9-9:20 Opening Circle
- 9:20-10:50 Literacy
- 10:50-11 Snack
- 11-11:40 Specialist
- 11:40-12:30 Lunch & Recess
- 12:30-1:30 Math
- 1:30-1:50 Recess
- 1:50-2:40 Science/SS
- 2:40-3:10 Choice Time
- ~~3:10-3:20~~ Packing Up
- 3:30-3:35 Closing Circle



# Multilingual Learner Services

Multilingual learners use and develop language to interpret and present different perspectives, build awareness of relationships, and affirm their identities.



- Multilingual students are fully included in their general education classroom to learn rigorous grade level curriculum alongside their peers.
- Teachers collaborate with the MLL facilitator to plan instruction that supports integration of language development and content.
- The MLL facilitator also: supports in the classroom, co-teaches with the classroom teacher, provides materials/resources to support students, assesses MLL students using the WIDA assessment.

## What can you do now to prepare for K?

- Keep a regular schedule (ensure enough sleep and plenty of exercise, spend time outdoors)
- Develop routines
- Encourage development of basic skills (letter and number recognition, colors and shapes, writing name)
- Encourage independence (practice putting on/zipping jacket, picking up after themselves, carrying a backpack)
- Read daily with your child and play games (help them learn to lose gracefully!)
- Encourage socialization through group activities and playdates
- Encourage your child to share and talk about their feelings
- Talk about kindergarten to reduce anxiety



# Welcome to School Events August and September

back to  
School



- School Meet and Greet
- Popsicles with Principals
- Kindergarten Camp
- WA Kids Conference with teacher prior to first day
- First day of kindergarten is Friday, Sep. 5<sup>th</sup>

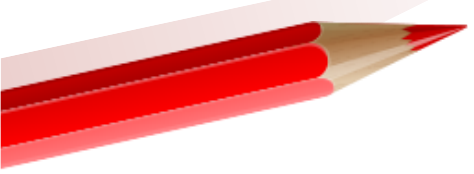
# Kindergarten Camp



2-3 hours for students to attend and experience activities at school in a classroom, library, gym, and playground.

Meet new peers and adults at school.

We will send dates out at the of June and sign up in early August.



# WA Kids Conferences

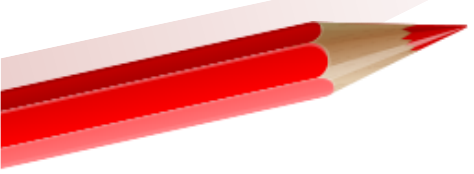


You and your Kindergartner will be invited before school starts for a meeting in late August or early September.

This is an opportunity for the teacher to learn about students and families.

Parent invited to share important information to support student transition to kindergarten.

You will receive communication from your school and/or teacher for the meeting either in person, by email or phone.





Where to find them..



**CHOICE SCHOOLS AND PROGRAMS**

# Applications Now Available

**LEARN MORE**

**CHOICE PROGRAMS**  
Choice School and Program applications for the 2019-20 school year are now available.

**JOB FAIR**  
We are hiring! Join us on Saturday, Feb. 2.

**FRANCINE WIEST**  
Has been appointed to the position of School Board Director for District Area 5.

Kindergarten enrollment begins first week of March.

**Where to find**

Kindergarten enrollment begins first week of March.

**CHOICE SCHOOLS AND PROGRAMS**

## Applications Now Available

**LEARN MORE**

<https://bsd405.org/schools/enrollment/enroll-your-student/>

Bullying Report Concern Enrollment Grades Technology Payments Calendar Menus Employment

Spotlight District News Calendar



<https://bsd405.org/schools/enrollment/enroll-your-student/>

# WELCOME CENTER

## CENTRO DE BIENVENIDA

### 欢迎中心



- Warmly welcome families to our district

- Support our community in navigating Bellevue School District systems

- Bring a more human-centered approach to our enrollment process

**Need Support?**

**[hello@bsd405.org](mailto:hello@bsd405.org)**

ESC West 1211 NE 1<sup>st</sup> St,  
Bellevue, WA 98005

- Dar una calurosa bienvenida a las familias a nuestro distrito.

- Apoyar a nuestra comunidad y explicar los programas y sistemas del Distrito Escolar de Bellevue.

- Trato personalizado y centrado en ayudar a nuestras familias a inscribir a sus hijos en nuestras escuelas.

**¿Necesita ayuda?**

**[hello@bsd405.org](mailto:hello@bsd405.org)**

ESC West 1211 NE 1<sup>st</sup> St,  
Bellevue, WA 98005

- 热烈欢迎家庭来到我们的地区

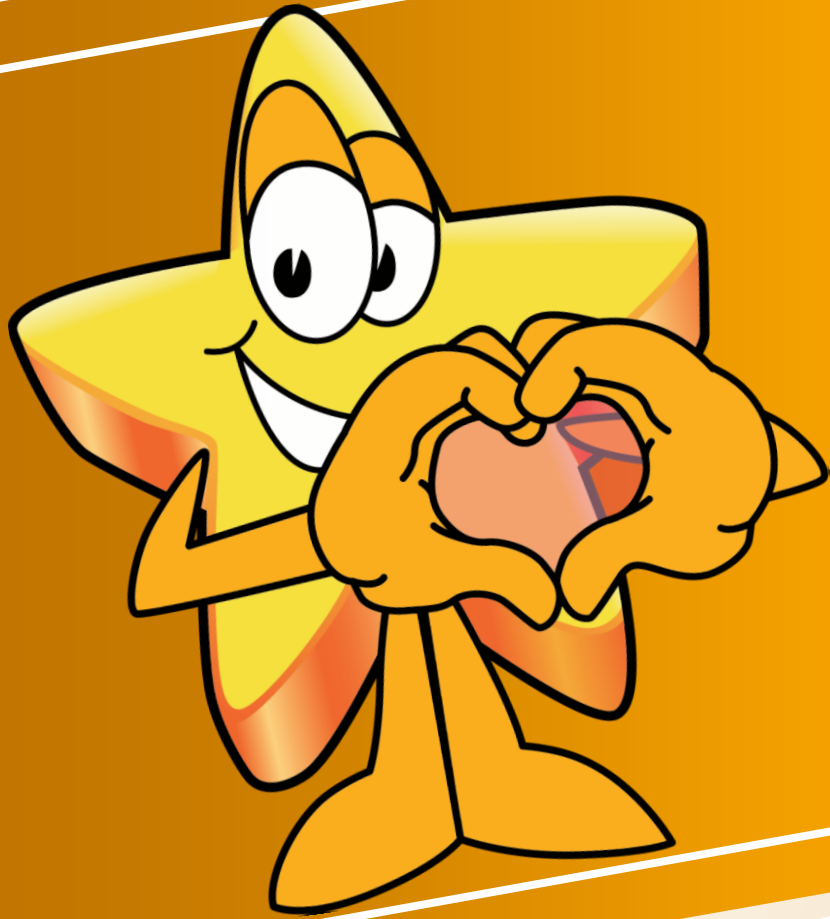
- 支持我们的社区在贝尔维尤学区系统导航

- 在我们的招生流程中采用更加以人为本的方法

**需要支持？**

**[hello@bsd405.org](mailto:hello@bsd405.org)**

ESC West 1211 NE 1<sup>st</sup> St,  
Bellevue, WA 98005



Thank you

For joining us tonight!

# Tour the school



- Specialist spaces: music, gym, art, and library
- Primary and intermediate halls
- School office and main entrance
- Kindergarten classrooms

