

# Rise STEM Academy For Girls



Week Ending January 10, 2025



# Rise STEM Academy For Girls

## ➤ **Work Completed:**

- Installed and built up Insulated Concrete Forms (ICF).
- Continue installing Concrete Masonry Units (CMU) up to bearing level.
- Set frames for walls and installed Stala frames on exterior walls.
- Worked on bond beams, footers, anchor bolts, and storm structures.
- Passed weld inspection for basement joists and decking.
- Storm shelter rebar delivered.

## ➤ **Upcoming Work / Look Ahead:**

- Continue slab preparation.
- Begin preparation for slab on deck.
- Continue bond beam and wall form preparation for upcoming pours.
- Progress footers, anchor bolts, and related structures.

# Rise STEM Academy For Girls

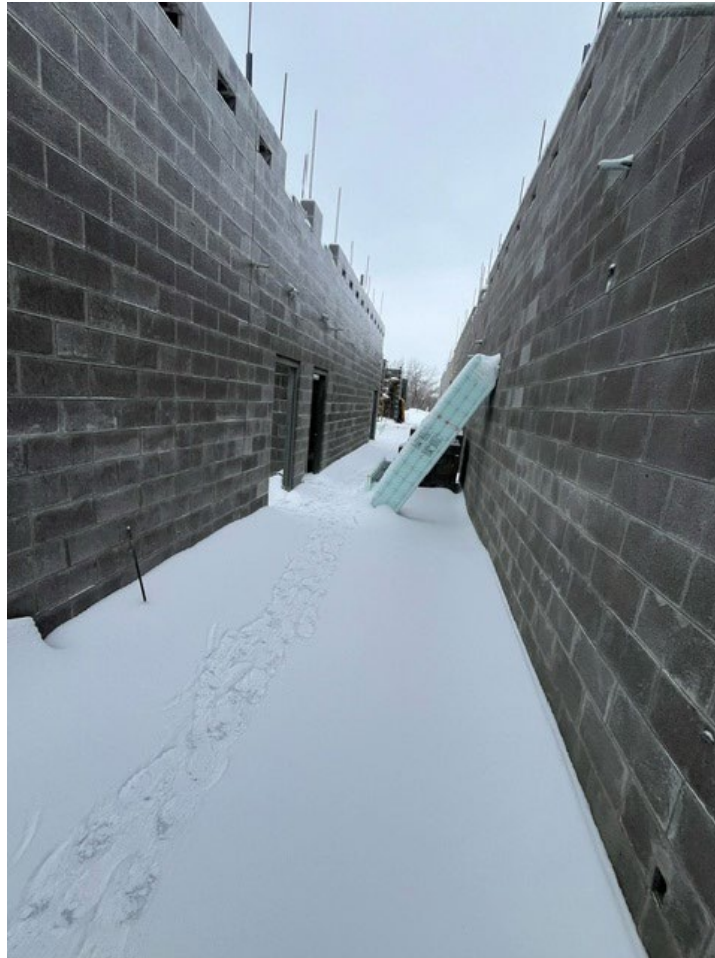
## CMU Wall Work in Progress



Week Ending January 10, 2025

# Rise STEM Academy For Girls

## CMU Wall Work in Progress



Week Ending January 10, 2025

# Rise STEM Academy For Girls

## CMU Wall Work in Progress



Week Ending January 10, 2025

# Rise STEM Academy For Girls

Installation of ICF Forms in Progress



# Rise STEM Academy For Girls

Installation of ICF Forms in Progress

