



# Enrollment Projections

Spring-Ford Area School District  
Board of School Directors  
November 25, 2024





## Sundance Associates

### George Sundell, Principal Demographer

45 years directing Facilities Planning Projects

25 Years of Demographic Consulting

200 Enrollment projections for K-12 Public School Districts



### Expertise

Regional District Studies

Regionalization/Withdrawal Studies

Accelerated Residential Construction/COAH Mandates

Redistricting utilizing GIS

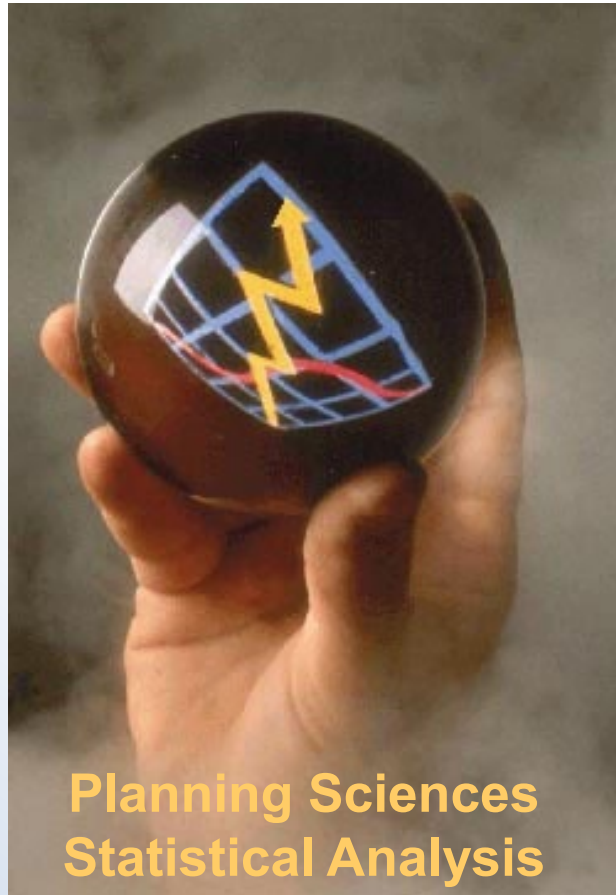
Impact of Charter Schools

Closure-Reorganization of Parochial Schools





# Enrollment Projections



Planning Sciences  
Statistical Analysis

## Cohort Survival Methodology Grade Level Progression

Primarily based on

1. Historic Enrollments &
2. Birth Rates

Acceptable Modifications  
through Certified Demographers Report





# Modifications to Projections

**Impact of Accelerated Housing Construction...**

**Above Average Residential Development**

**Affordable Housing (COAH)**

**Housing Mix : Single and Multi-Family Types,  
Ownership, Value and Number of Bedrooms**

**Multipliers for Public School Age Children  
by housing type and number of bedrooms**

**Recovery from Recession Level Resales**

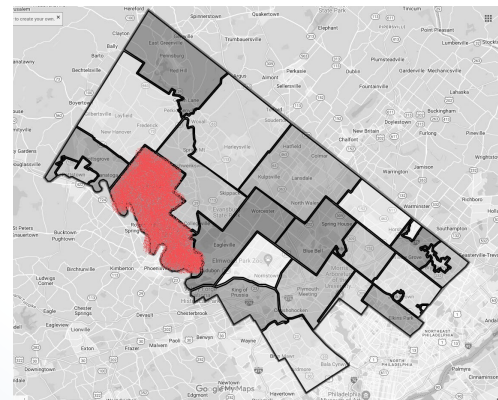
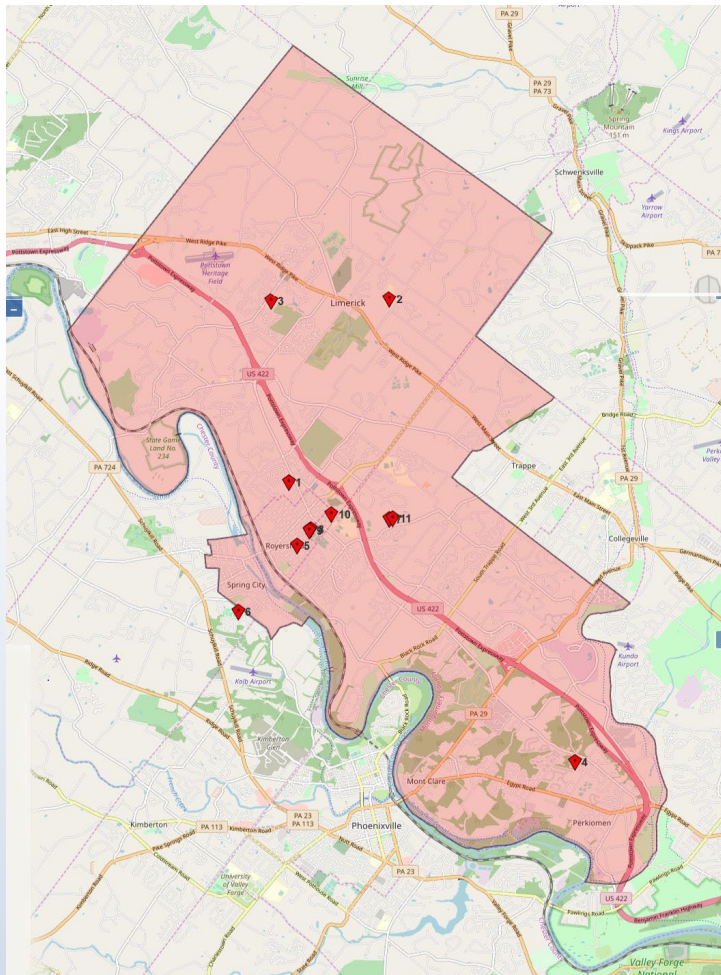




# Municipality and District

## 4 Municipalities, 11 Schools

School	Street	Municipality
Brooke El Sch	339 N Lewis Rd	Royersford
Evans El Sch	125 Sunset Rd	Limerick
Limerick El Sch	81 Limerick Center Rd	Royersford
Oaks El Sch	325 Oaks School Dr	Oaks
Royersford El Sch	450 Spring St	Royersford
Spring City El Sch	190 Wall Street	Spring City
S-F Intrmd Sch 5th/6th	833 South Lewis Road	Royersford
S-F MS 7th Grade Ctr	833 South Lewis Road	Royersford
S-S MS 8th Grade Ctr	700 Washington Street	Royersford
S-F SHS 9-12 Ctr	350 S Lewis Rd	Royersford
Upper Providence El Sch	833 South Lewis Rd Bldg 3	Royersford



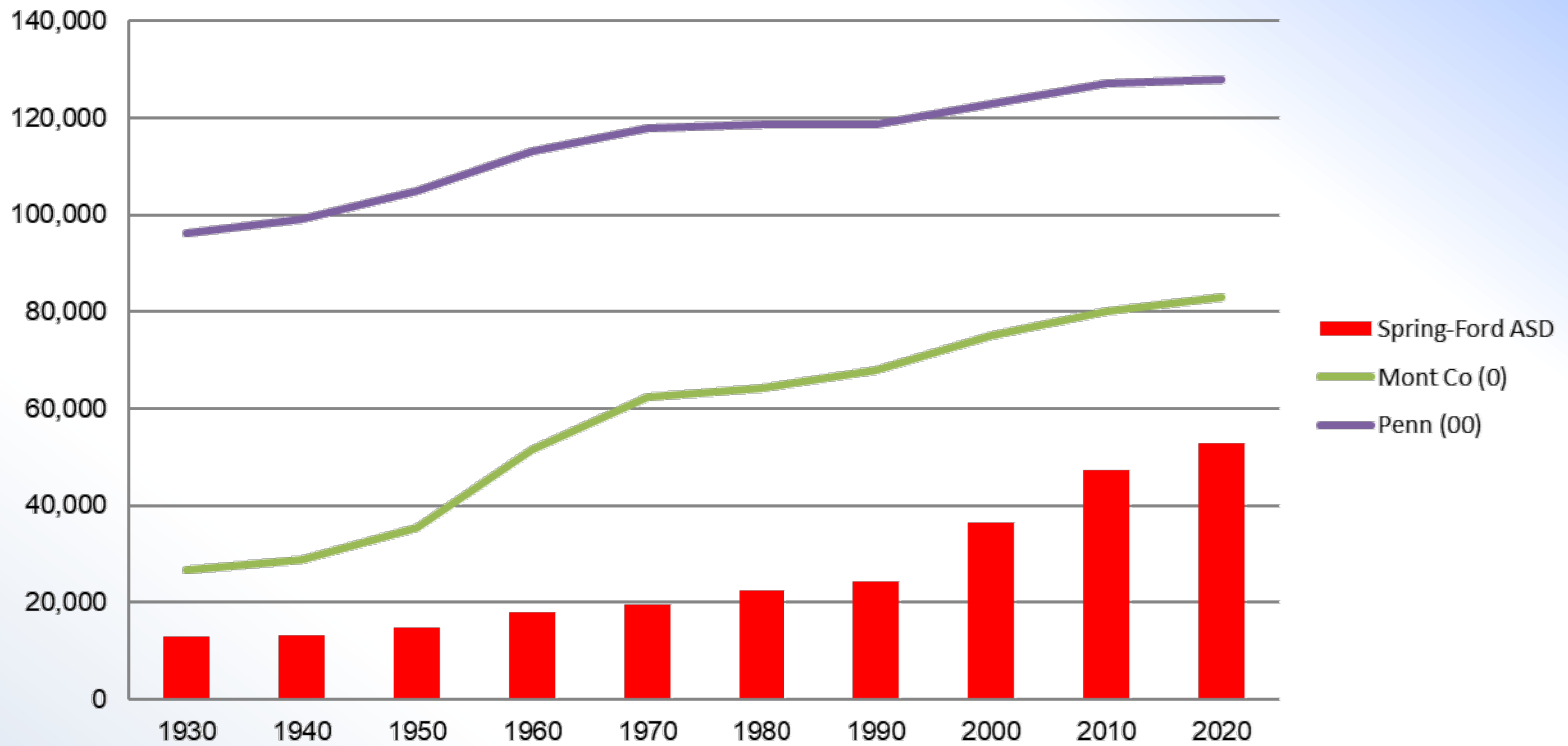
Montgomery and  
Chester Counties





# Population Growth

Local-County-State Comparative Population



Spring-Ford ASD experienced the most rapid period of growth between 1990 and 2000 at 50.4%. That rate lagged the county and state which experienced the most rapid period of growth between 1950 and 1960.

The 2020 population at 52,983 is 5,615 more persons than at the 2010 count.

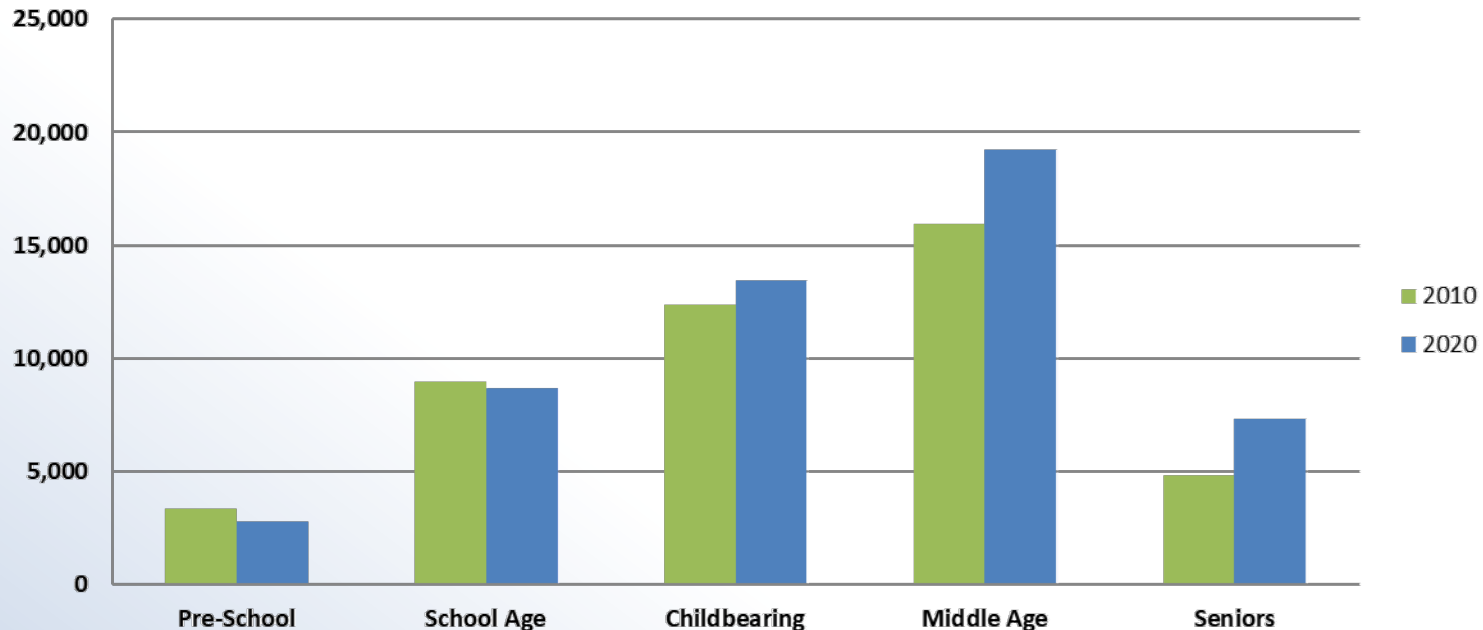




# Population by Age Group

	<i>Age</i>	<b>2010</b>		<b>2020</b>	<b>Percents</b>	<b>2010</b>	<b>2020</b>
<b>Pre-School</b>	<i>0-4</i>	3,373	<b>-596</b>	2,777	<b>Pre-School</b>	7.4%	5.4%
<b>School Age</b>	<i>5-17</i>	8,949	<b>-293</b>	8,656	<b>School Age</b>	19.7%	16.8%
<b>Childbearing</b>	<i>18-39</i>	12,360	<i>1,057</i>	13,417	<b>Childbearing</b>	27.2%	26.1%
<b>Middle Age</b>	<i>40-64</i>	15,918	<i>3,301</i>	19,219	<b>Middle Age</b>	35.0%	37.4%
<b>Seniors</b>	<i>65+</i>	4,815	<i>2,487</i>	7,302	<b>Seniors</b>	10.6%	14.2%
		<b>45,415</b>	<i>5,956</i>	<b>51,371</b>		100.0%	100.0%

**Population by Age Group: 2010 & 2020**





# Residential Permitting

Residential Building Permits by Type



The recent 6-year (2018-23) Residential Permitting level averages 204 units per year.





## Residential Permitting Summary

<b>2018-2023</b>	<b>Avg Tot</b>	<b>SF</b>	<b>MF</b>	<b>TOT %</b>
Limerick	95	21	74	46.6%
Royersford	0	0	0	0.0%
Upr Providence	74	73	1	36.3%
Spring City	35	35	0	17.2%
	204	129	75	
		63.2%	36.8%	100.0%

Limerick counts as 46% of all units and nearly 100% of Multi-family units.

Upper Providence counts for 36% of total units, nearly all Single Family





# Future Residential Occupancy by Type

Development/Status	Type	Bdrms	Unit Count	2023	2024	2025	2026	2027	2028	5 Yr Total
<b>Limerick Twp</b>										
1 Sukonik Limerick Homes <i>School Rd</i>	SF	3-4 Bdrms	51	51						
2 Approved SF X 5 <i>Misc. Locations</i>	SF	3-4 Bdrms	12					6	6	12
3 Limerick Town Ctr <i>Swamp Pike</i>	TH TH	2 Bdrm 3 Bdrm	10 20	10 20						
4 Gambone <i>614 W. Ridge Pike</i>	Apt	2 Bdrm	8		8					8
5 Piazza Realty Co. Inc. <i>3373 Ridge Pike</i>	TH	3 Bdrm	76			76				76
6 544 Limerick Center Rd. <i>544 Limerick Center Road</i>	SF	3-4 Bdrms	10			10				10
7 Ironwood <i>S. Limerick Road</i>	TH TH	2 Bdrm 3 Bdrm	25 70	12 35	13 35					25 70
8 RML Construction <i>Game Farm Road</i>	SF	3-4 Bdrms	4	4						4
9 Neiffer Road Devel., LLC <i>1 &amp; 15 Neiffer Road</i>	TH TH	2 Bdrm 3 Bdrm	10 24				10 24			10 24
10 Saratoga Springs (Metro C) <i>Evergreen Road</i>	Apts Apts Apts	1 Bdrm 2 Bdrm 3 Bdrm	45 257 30				15 85 10	15 86 10	15 86 10	45 257 30
11 Alderwood Run <i>511 &amp; 523 Linfield Road</i>	TH TH	2 Bdrm 3 Bdrm	6 34				3 17	3 17		6 34
12 Emerald Crossing <i>142 W. Ridge Pike</i>	TH TH	2 Bdrm 3 Bdrm	40 27				20 13	20 14		40 27
13 593 Limerick Center Rd <i>593 Limerick Center Rd</i>	TH TH	2 Bdrm 3 Bdrm	0 5			5				5
					59	139	197	171	117	683
<b>Spring City</b>										
14 Riverfront (on Hold)	TH TH	2 Bdrm 3 Bdrm	48 140			24 70	24 70			0 0
15 610 Main Street	Apts Apts	1 Bdrm 2 Bdrm	35 35		35 35					35 35
					70					70

<b>Upper Providence</b>										
16 Res at Prov Town Ctr <i>Arcola Rd &amp; Water Loop Rd.</i>	Apts Apts Apts	1 Bdrm 2 Bdrm 3 Bdrm	250 250 85	# # #	95 95 19	95 95 19				95 95 19
17 172 Hopwood (Galman) <i>Hopwood Rd &amp; Morgan Lane</i>	TH	3 Bdrm	48			48				48
18 Yerkes Station <i>Hopwood Road and Route 29/Cc</i>	Apts Apts Apts	1 Bdrm 2 Bdrm 3 Bdrm	103 103 22			52 52 11	51 51 11			103 103 22
19 PRDC Kline Road / Toll B <i>Kline and Linfield Trappe Roads</i>	SF	3-4 Bdrms	30	15	15					15
20 Meadows at Longview (V) <i>Greenwood Ave &amp; Knoll Circle</i>	SF	3-4 Bdrms	25	#	13					0
21 Toll Bros / Hearthfield <i>Rittenhouse and Hess Roads</i>	SF	3-4 Bdrms	54	7	20	27				27
22 South Lewis Road Townhc <i>Lewis and Vaughn Roads</i>	TH	3 Bdrm	21			21				21
23 Amelia Street Townhome <i>Amelia Street and Route 29/Collegeville Road</i>	TH	3 Bdrm	8						8	8
24 Parkhouse/NVR MXD <i>1600 Black Rock Rd.</i>	TH TH SF	2 Bd A/R 3 Bdrm 3-4 Bdrms	147 389 49	100 100 25	47 100 24	89				47 289 49
25 Lovers Lane SD <i>765 S. Collegeville Rd.</i>	SF	3-4 Bdrms	11	11						0
26 Hightop THs <i>140 Whitaker Rd.</i>	TH	3 Bdrm	60						60	0
27 Hightop MXD <i>1201 S. Collegeville Road</i>	TH	2 Bdrm	122						122	122
28 Hightop Apts <i>Collegeville Rd &amp; Perkiomen Blvd</i>	Apts Apts Apts	1 Bdrm 2 Bdrm 3 Bdrm	125 175 72			125 175 72				125 175 72
					607	609	211	8	0	1,435
					736	748	408	179	117	2,188

Future Occupancies from 28 projects will be 2,188 units (2,094 Multi-Family) or 475 MF units per year for 3 years.





# Pa Demographic Multipliers

## WHO LIVES IN PENNSYLVANIA HOUSING?

**Multipliers for  
Public School Age Children  
by  
Bedroom Count,  
Unit Type,  
Ownership and  
Value.**

**Rutgers University  
Center for Urban Policy Research**



Rutgers University, Center for Urban Policy Research  
**Residential Demographic Multipliers**  
—  
Estimates of the Occupants of New Housing  
(Residents, School-Age Children, Public School-Age Children)  
by State, Housing Type, Housing Size, and Housing Price

Prepared by:  
Robert W. Burchell, Ph.D.  
David Litwin, Ph.D.  
William Dolphin, M.A.  
Center for Urban Policy Research  
Edward J. Bloustein School of Planning  
and Public Policy  
Rutgers, The State University of New Jersey  
New Brunswick, New Jersey

June 2006

### Multiplier Public SAC

**Type # Bdrms (School Age Children)**

<b>SF/CH</b>	3 Bdrm	0.56 Blend
<b>SF/CH</b>	4 Bdrm	0.84
<b>TH-Dplx</b>	2 Bdrm	0.15
<b>TH-Dplx</b>	3 Bdrm	0.36
<b>Apts</b>	1 Bdrm	0.04
<b>Apts</b>	2 Bdrm	0.19
<b>Apts</b>	3 Bdrm	0.70



# Public School Age Children Yield

**Future Public School Age Children by Unit Type & Year**

Development/Status	Type	Bdrms	PSAC/Unit Multiplier	2024	2025	2026	2027	2028	2029	5 Yr Total	Elem Sch
<b>Limerick Twp</b>											
1 Sukonik Limerick Homes School Rd	SF	3-4 Bdrms	0.721	36.8							Evans
2 Approved SF X 5 Misc. Locations	SF	3-4 Bdrms	0.721				4.3	4.3	X	8.7	Multi
3 Limerick Town Ctr Swamp Pike	TH	2 Bdrm	0.234	2.3							Evans
	TH	3 Bdrm	0.501	10.0							Evans
4 Gambone 614 W. Ridge Pike	Apt	2 Bdrm	0.241		1.9					1.9	Limerick
5 Piazza Realty Co. Inc. 3373 Ridge Pike	TH	3 Bdrm	0.501			38.1				38.1	Evans
6 544 Limerick Center Rd. 544 Limerick Center Road	SF	3-4 Bdrms	0.721			7.2			X	7.2	Limerick
7 Ironwood S. Limerick Road	TH	2 Bdrm	0.234		2.8	3.0				5.9	Brooke
	TH	3 Bdrm	0.501		17.5	17.5				35.1	Brooke
8 RML Construction Game Farm Road	SF	3-4 Bdrms	0.721		2.9				X	2.9	Evans
9 Neiffer Road Devel., LLC 1 & 15 Neiffer Road	TH	2 Bdrm	0.234				2.3			2.3	Evans
	TH	3 Bdrm	0.501				12.0			12.0	Evans
10 Saratoga Springs (Metro C Evergreen Road	Apts	1 Bdrm	0.023				0.3	0.3	0.3	1.0	Brooke
	Apts	2 Bdrm	0.241				20.5	20.7	20.7	61.9	Brooke
	Apts	3 Bdrm	0.873				8.7	8.7	8.7	26.2	Brooke
11 Alderwood Run 511 & 523 Linfield Road	TH	2 Bdrm	0.234				0.7	0.7		1.4	Brooke
	TH	3 Bdrm	0.501				8.5	8.5		17.0	Brooke
12 Emerald Crossing 142 W. Ridge Pike	TH	2 Bdrm	0.234				4.7	4.7		9.4	Evans
	TH	3 Bdrm	0.501				6.5	7.0		13.5	Evans
13 593 Limerick Center Rd 593 Limerick Center Rd	TH	2 Bdrm	0.234								Limerick
	TH	3 Bdrm	0.501			2.5				2.5	Limerick
				25.2	68.4	64.3	55.0	34.1		<b>247.0</b>	
<b>Spring City</b>											
14 Iverfront (on Hold)	TH	2 Bdrm	0.234							0.0	Spring City
	TH	3 Bdrm	0.501							0.0	Spring City
15 610 Main Street	Apts	1 Bdrm	0.023		0.8					0.8	Spring City
	Apts	2 Bdrm	0.241		8.4					8.4	Spring City
				9.2						<b>9.2</b>	

**Upper Providence**

16 Res at Prov Town Ctr Arcola Rd & Water Loop Rd.	Apts	1 Bdrm	0.023		2.2	2.2					2.2	Upr Prov t	
	Apts	2 Bdrm	0.241		22.9	22.9					22.9	Upr Prov t	
	Apts	3 Bdrm	0.873		16.6	16.6					16.6	Upr Prov t	
17 172 Hopwood (Galman) Hopwood Rd & Morgan Lane	TH	3 Bdrm	0.501			24.0					24.0	Upr Prov t	
18 Yerkes Station Hopwood Road and Route 29/Cc	Apts	1 Bdrm	0.023			1.2	1.2				2.4	Oaks	
	Apts	2 Bdrm	0.241			12.5	12.3				24.8	Oaks	
	Apts	3 Bdrm	0.873			9.6	9.6				19.2	Oaks	
19 PRDC Kline Road / Toll B Kline and Linfield Trappe Roads	SF	3-4 Bdrms	0.721		10.8	10.8					X	10.8	Evans
20 Meadows at Longview (W Greenwood Ave & Knoll Circle	SF	3-4 Bdrms	0.721		9.4						X	0.0	Evans
21 Toll Bros / Hearthfield Rittenhouse and Hess Roads	SF	3-4 Bdrms	0.721		14.4	19.5					X	19.5	Upr Prov t
22 South Lewis Road Townhc Lewis and Vaughn Roads	TH	3 Bdrm	0.501			10.5						10.5	Royersfor
23 Amelia Street Townhome Amelia Street and Route 29/Collegeville Road	TH	3 Bdrm	0.501						4.0			4.0	Oaks
24 Parkhouse/NVR MXD 1600 Black Rock Rd.	TH	2 Bd A/R	0		0.0	0.0						0.0	Oaks
	TH	3 Bdrm	0.501		50.1	50.1	50.1	44.6				144.8	Oaks
	SF	3-4 Bdrms	0.501			12.5	12.0				X	24.5	Oaks
25 Lovers Lane SD 765 S. Collegeville Rd.	SF	3-4 Bdrms	0.721		7.9						X	0.0	Oaks
26 Hightop THs 140 Whitaker Rd.	TH	3 Bdrm	0.501									0.0	Oaks
27 Hightop MXD 1201 S. Collegeville Road	TH	2 Bdrm	0.234						28.5			28.5	Oaks
28 Hightop Apts Collegeville Rd & Perkiomen	Apts	1 Bdrm	0.023						2.9			2.9	Oaks
	Apts	2 Bdrm	0.241						42.2			42.2	Oaks
	Apts	3 Bdrm	0.873						62.9			62.9	Oaks
				192.5	193.1	73.1	4.0	0.0				<b>462.7</b>	
												<b>Grand Total</b>	<b>719.0</b>

2,188 units of New Housing will yield 719 Public School Age Children





# Adjusted Public School Age Children by School

Only  
Multi-Family

	2025	2026	2027	2028	2029	Total	
Evans		38.1	25.6	11.7		75.3	Evans
Limerick	1.9	2.5				4.4	Limerick
Brooke	20.3	20.6	38.8	39.0	29.8	148.5	Brooke
Spring City	9.2					9.2	Spring City
Upr Prov ES	41.7					65.7	Upr Prov ES
Oaks	73.4	181.1	73.1	4.0		331.6	Oaks
Royersford	10.5					10.5	Royersford
<b>TOTAL</b>	<b>157.1</b>	<b>242.2</b>	<b>137.5</b>	<b>54.7</b>	<b>29.8</b>	<b>645.4</b>	

Only  
Above the  
Average

	2025	2026	2027	2028	2029	Total	
Evans		33.5	22.5	10.3		66.3	Evans
Limerick	1.7	2.2				3.9	Limerick
Brooke	17.9	18.1	34.1	34.3	26.2	130.7	Brooke
Spring City	9.2					9.2	Spring City
Upr Prov ES	41.7					41.7	Upr Prov ES
Oaks	73.4	181.1	73.1	4.0		331.6	Oaks
Royersford	10.5					10.5	Royersford
<b>TOTAL</b>	<b>154.5</b>	<b>234.9</b>	<b>129.8</b>	<b>48.6</b>	<b>26.2</b>	<b>594.0</b>	

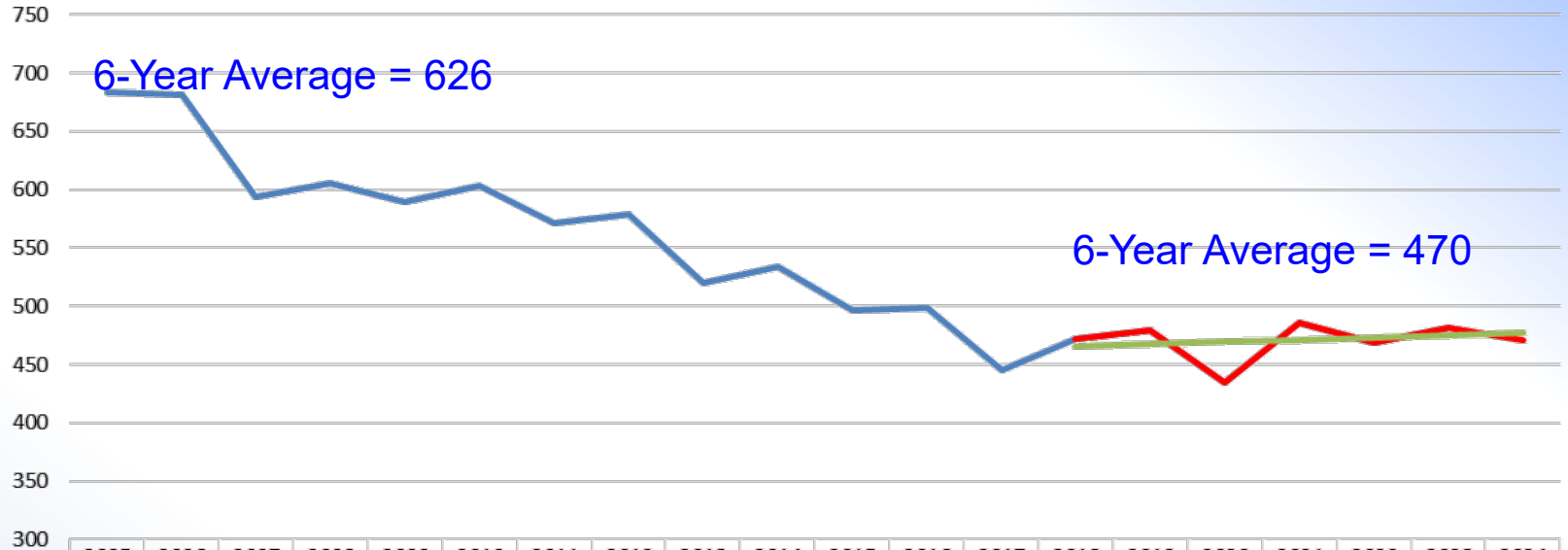
Of 719 new Public School Age Children, 594 are added to the projection...87% in first 3 years





# Annual Births

Births: Spring-Ford ASD



	2005	2006	2007	2008	2009	2010	2011	2012	2013	2014	2015	2016	2017	2018	2019	2020	2021	2022	2023	2024
Births	683	681	594	605	589	603	571	579	520	534	497	499	445	472	479	434	486	469	482	
6 Year Avg														472	479	434	486	469	482	470
6 Year Trend														465	467	469	471	473	475	478

The Average of Births for the last 6 years is used in making the “less accurate” 5<sup>th</sup> to 10<sup>th</sup> year projection.

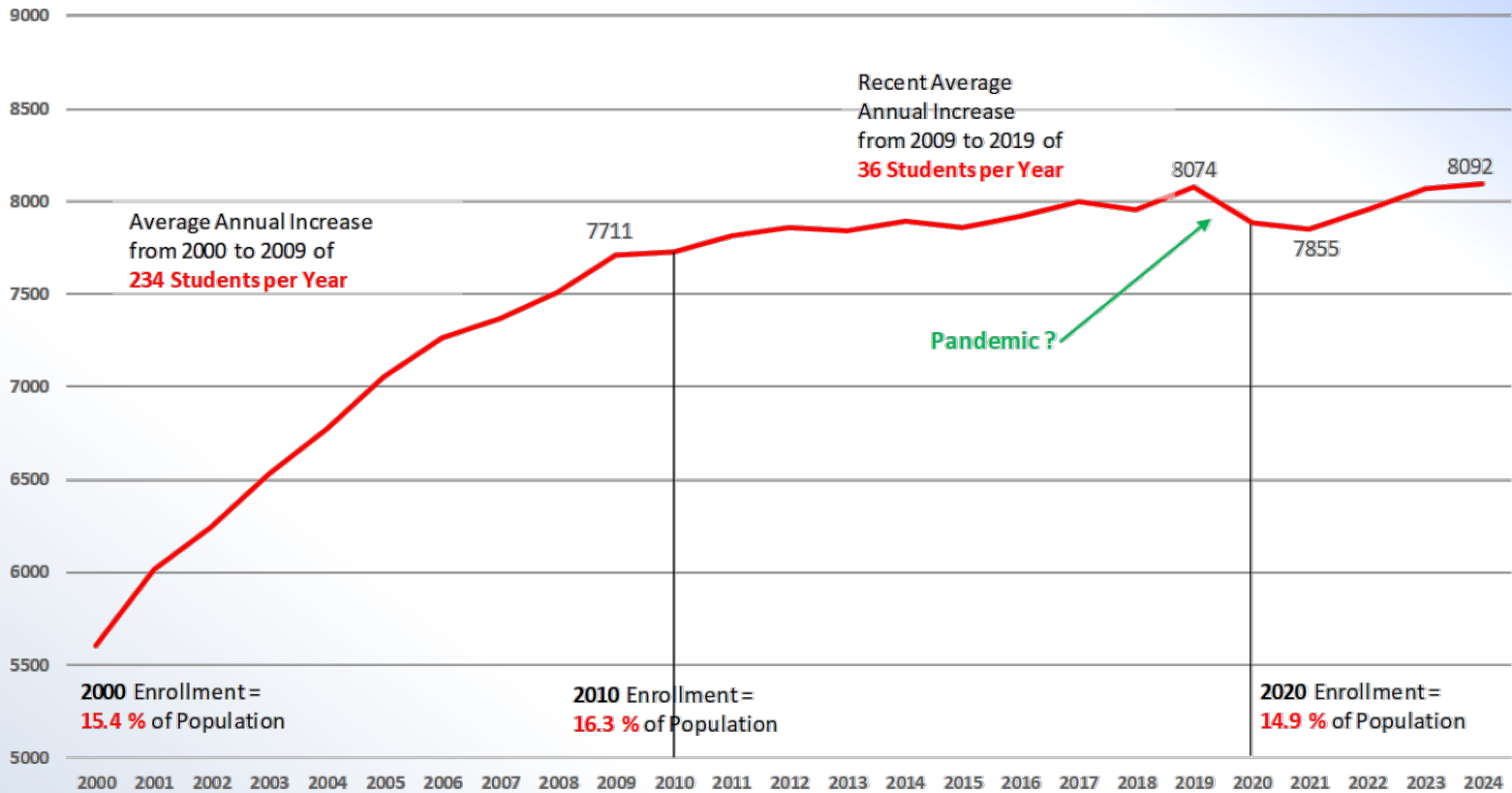
The recent 6-year trend is for 5 more Births per year.





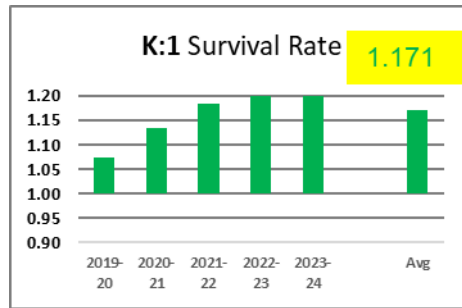
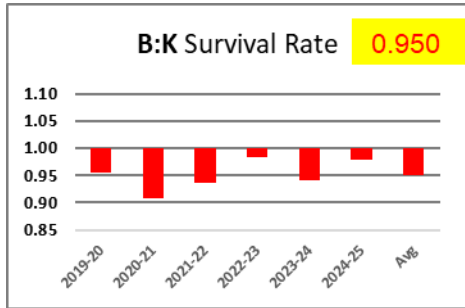
# Enrollment History: 2000 to 2024

Historical Enrollment October 2000 to 2024

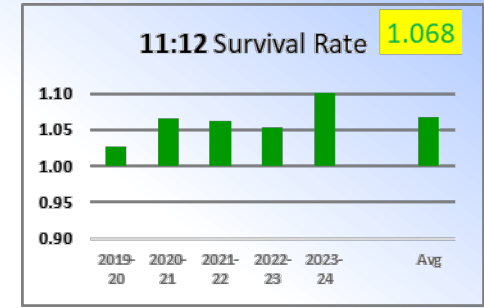




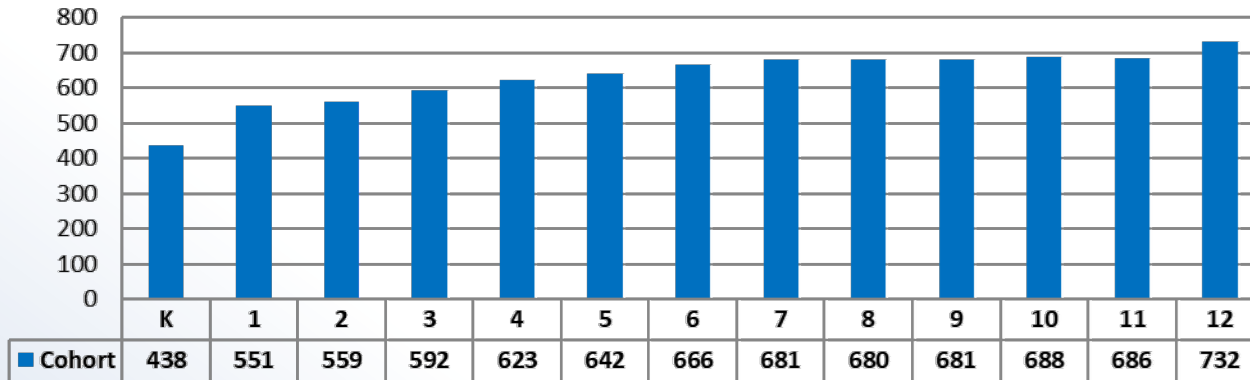
# Cohort Survival Rates by Grade Level



...



**Cohort Growth: 2022 K - 2034 Gr 12**



**General Cohort Growth** is such that a year 2020 Kindergarten of 438 entering students peaks as a 12th Grade graduating class of 735 students in year 2034.





# Demographics Summary

## Population

Population is increasing at a consistent rate

Pre-School and School Age Group have decreased between census

Recent 6-Year Births are averaging 472 per year, down from 625 average

## Housing

Recent Permitting Level was 204 units per year

A future mix of 2,188 units of proposed Housing would yield 645 Grade K to 12 students...the equivalent of 50 students per grade level

Of the 645 students from new multi-family housing, 594 (92%) are from “above the 6-year average” and are added to the projection

## Schools

Enrollments continue to increase after a Pandemic decrease





## So, What are the Projections?

**We make District, Grade Organization and (9) School Projections**

**Accurate for Year 1-5 ... *and less accurate year 6-10 projections***

**Enrollment Graphs also show School “District Practice” Capacities**

**Enrollment Table establishes student counts by Grade and Year**

**Elementary Table shows Section Counts and changes**





# Reading the Charts

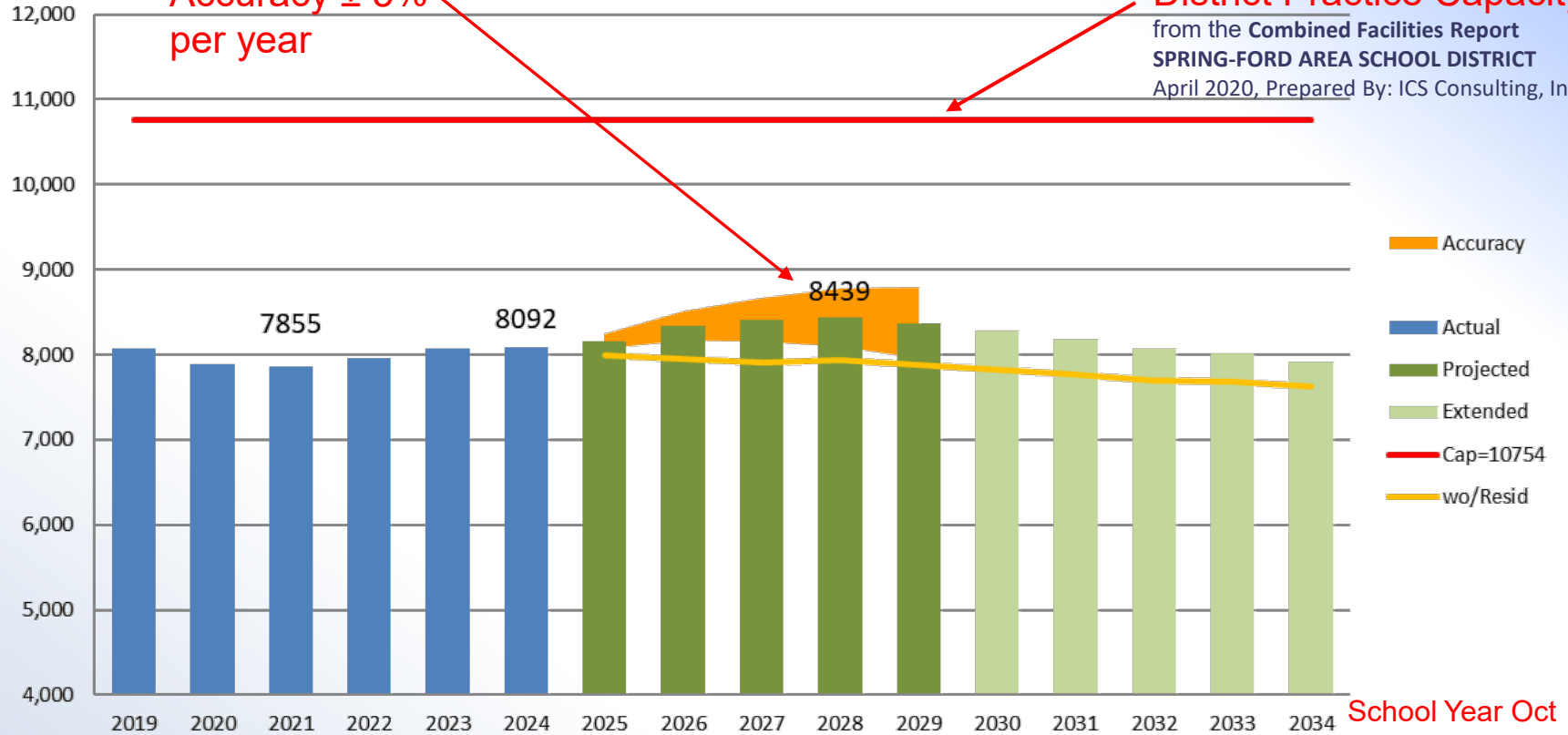
Cone of Accuracy  $\pm 5\%$  per year

District-wide K-12 Enrollments

District Practice Capacity

from the Combined Facilities Report  
SPRING-FORD AREA SCHOOL DISTRICT  
April 2020, Prepared By: ICS Consulting, Inc.

Student Count



Actual

Projected

Extended

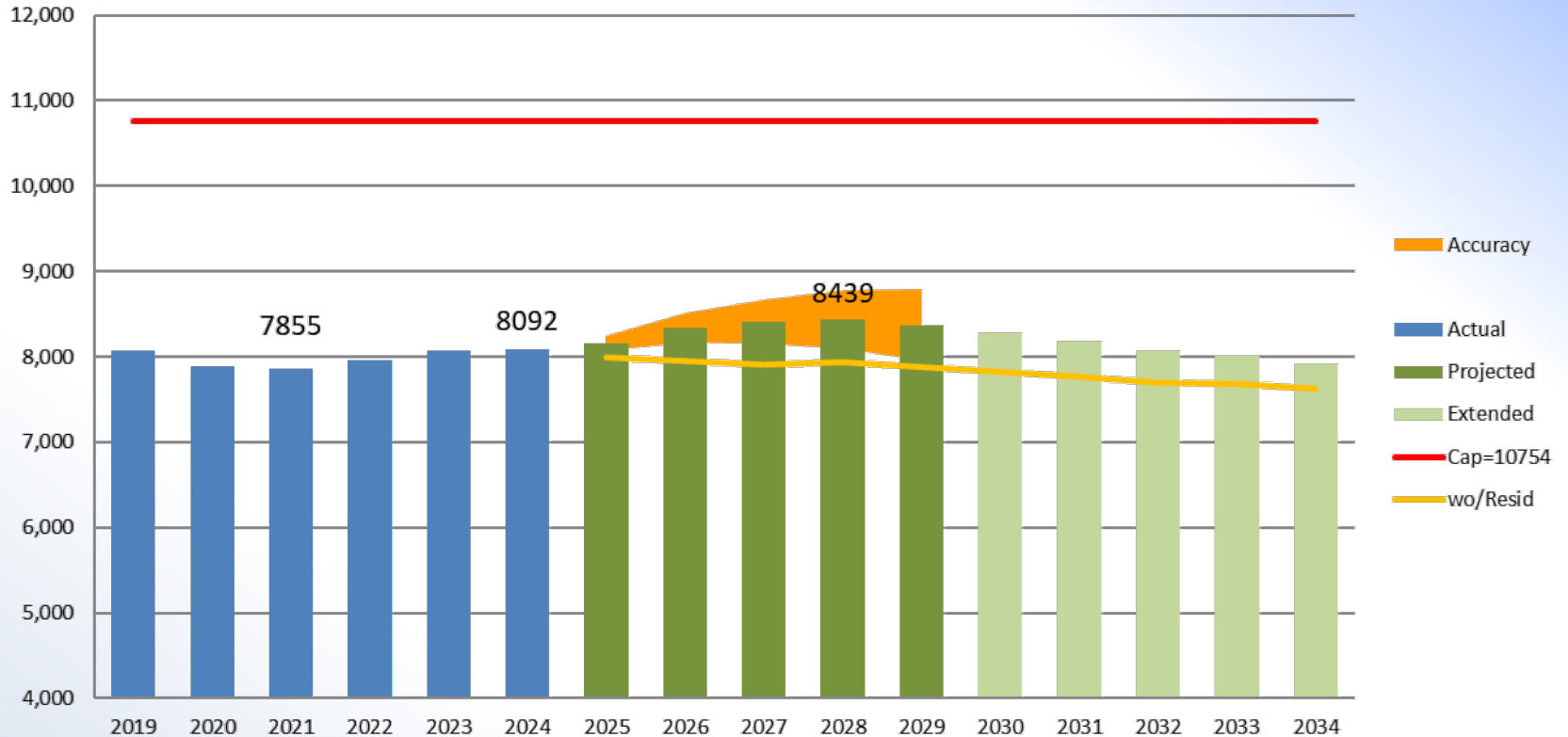
School Year Oct





# PK to Grade 12 District Enrollments

District-wide K-12 Enrollments

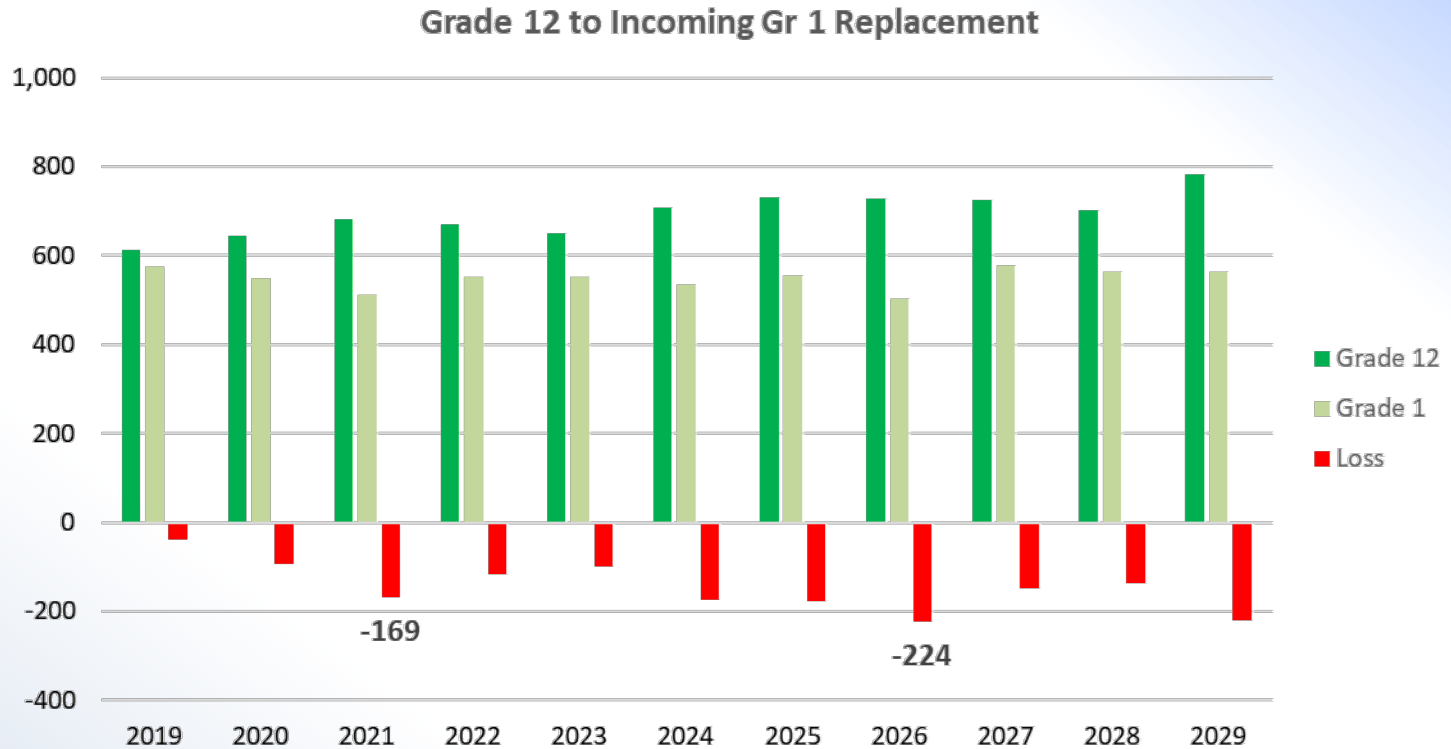


With the addition of 594 students from new housing, District-wide enrollments will continue below the District Practice Capacity of 10,754 students in every year of the projection by an average of 2,412 students.





# Grade 12 to Grade 1 Replacement



Over the last 6 years, an average of 611 graduating Seniors has been replaced by an average of 546 incoming First Graders. That difference of 116 students will increase to 181 in the 5-year projection.





## Other Demographic Observations

### **Cohort Survival Rates**

Elem = 1.065, MS = 1.017, HS = 1.019

### **Differing Grade Sizes (Actual Period)**

Elem = 571, MS = 647, HS = 656

**Births are volatile** but trend is for only 2+ per year

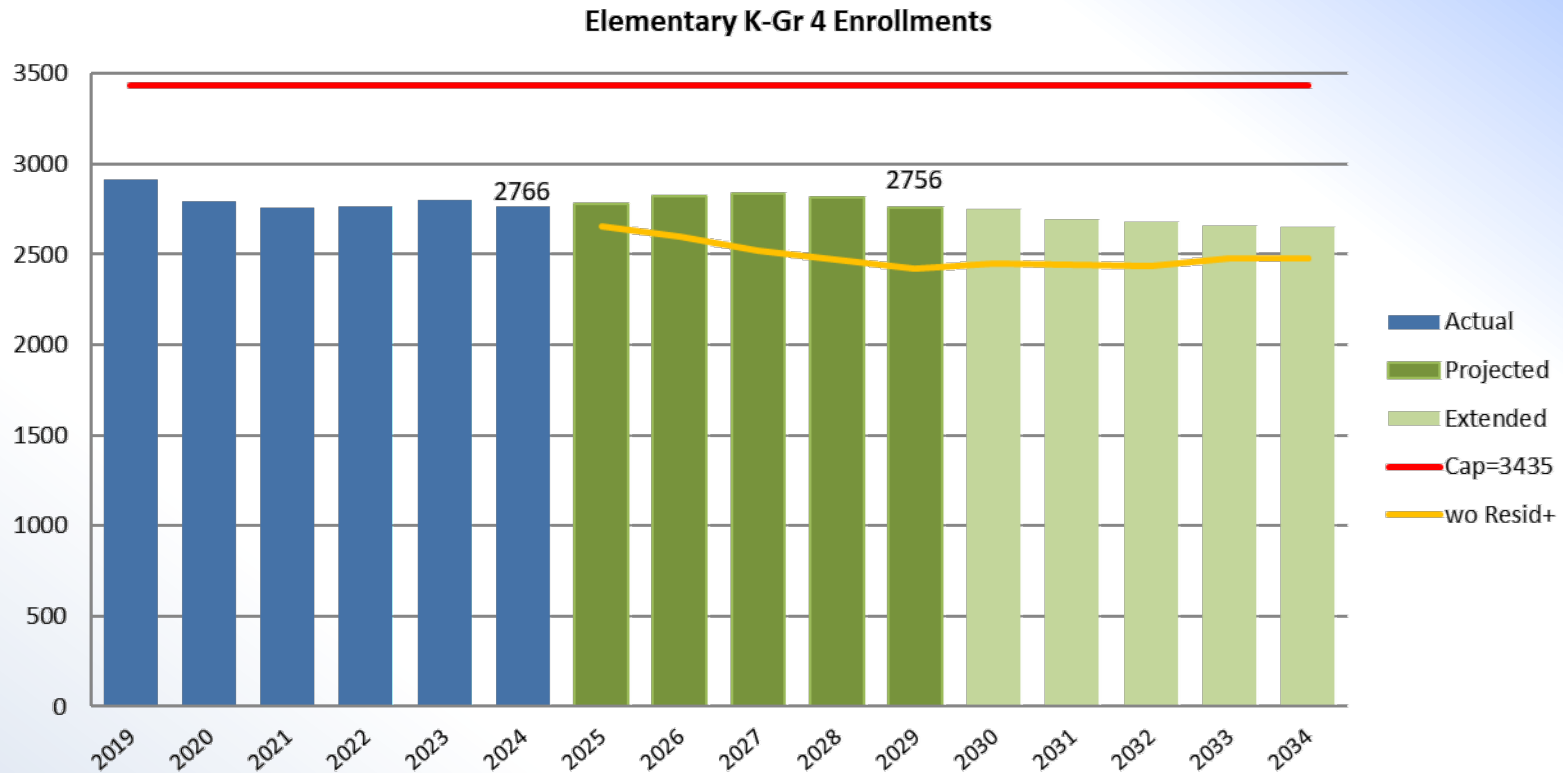
Population is aging in place...

**Median Age increased** from 40.3 to 45.7 in 6 years (2018-2023)





# Elementary K-4 Enrollment Projections



In the projection period enrollments will stabilize around an average of 2,801 students and end the period with a loss of 10 students after 228 were added from new housing and is under DP Capacity an average of 634 students





# Elementary PK-4 Enrollment Projections

Spring-Ford Area School District

## Elementary K-Grade 4 Enrollments

**228** Students from new housing to Public School at the elementary level

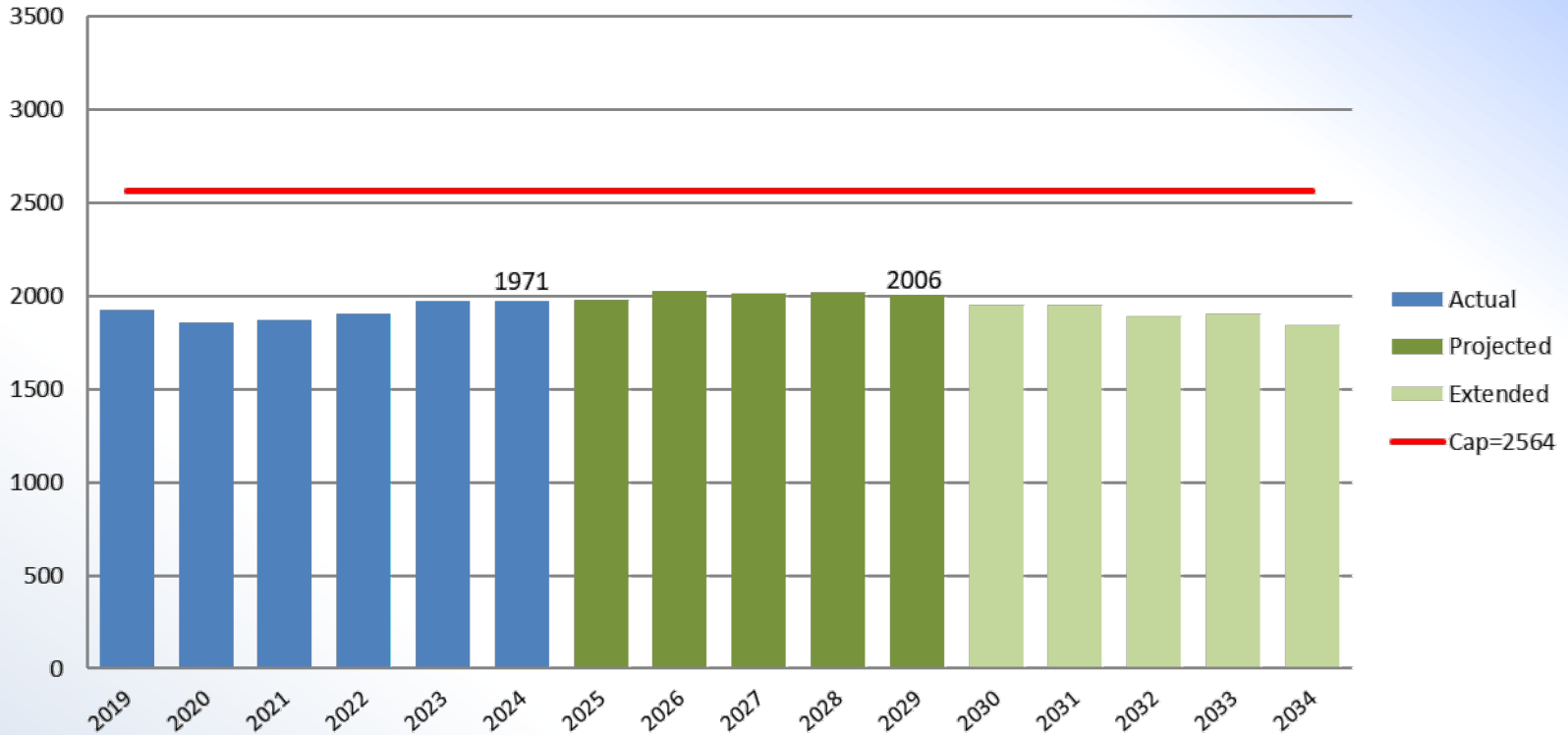
								K-4		Period to Period	
		PK	K	1	2	3	4	UG	TOTAL	Average	Change
<b>Actual</b>	<b>2019</b>		510	575	613	618	599	0	<b>2,915</b>		
	<b>2020</b>		451	548	561	610	623	0	<b>2,793</b>		
	<b>2021</b>		467	512	589	573	614	0	<b>2,755</b>		
	<b>2022</b>		438	553	545	618	609	0	<b>2,763</b>	<b>2,799</b>	
	<b>2023</b>		444	551	585	590	632	0	<b>2,802</b>		
	<b>2024</b>		469	534	559	609	595	0	<b>2,766</b>		<b>-149</b> -5.1%
<b>Projected</b>	<b>2025</b>		424	561	566	592	634	0	<b>2,777</b>		
	<b>2026</b>		480	515	600	605	623	0	<b>2,823</b>		
	<b>2027</b>		456	572	544	633	629	0	<b>2,833</b>	<b>2,801</b>	
	<b>2028</b>		462	537	597	569	650	0	<b>2,815</b>		
	<b>2029</b>		449	543	560	622	583	0	<b>2,756</b>		<b>-10</b> -0.4%
<b>Extended</b>	<b>2030</b>		447	526	563	581	635	0	<b>2,752</b>		
	<b>2031</b>		447	523	545	584	593	0	<b>2,694</b>		
	<b>2032</b>		447	523	543	566	597	0	<b>2,677</b>	<b>2,686</b>	
	<b>2033</b>		447	523	543	564	578	0	<b>2,655</b>		
	<b>2034</b>		447	523	543	564	576	0	<b>2,653</b>		<b>-103</b> -3.8%





# Middle School Gr 5-7 Enrollment Projections

Middle Schools Gr 5-7 Enrollments

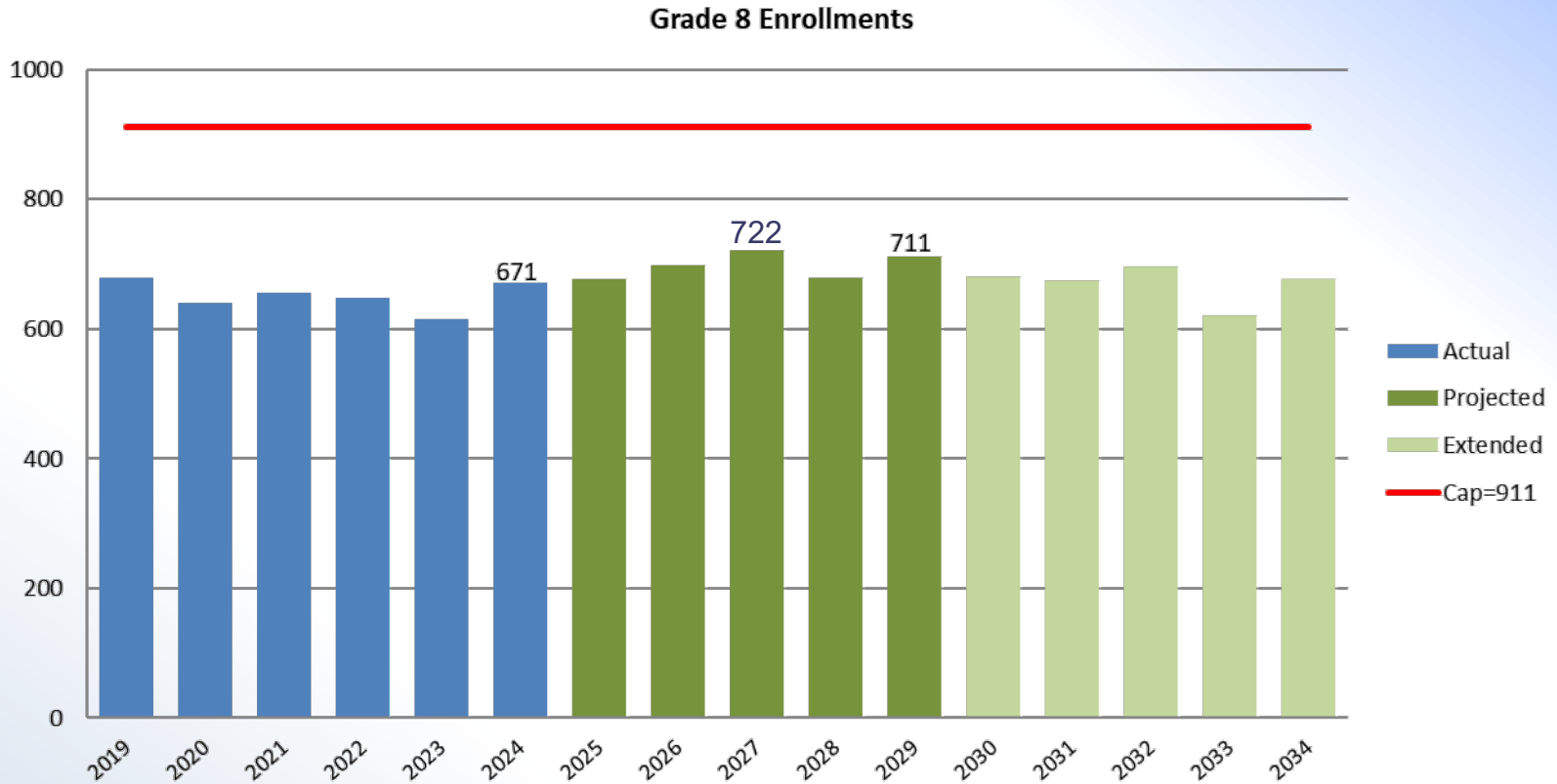


138 Gr 5-7 students are added from new housing in the projection period. Projected enrollments peak at 2,017 students, 547 students under DP Capacity.





# Middle School Gr 8 Enrollment Projections

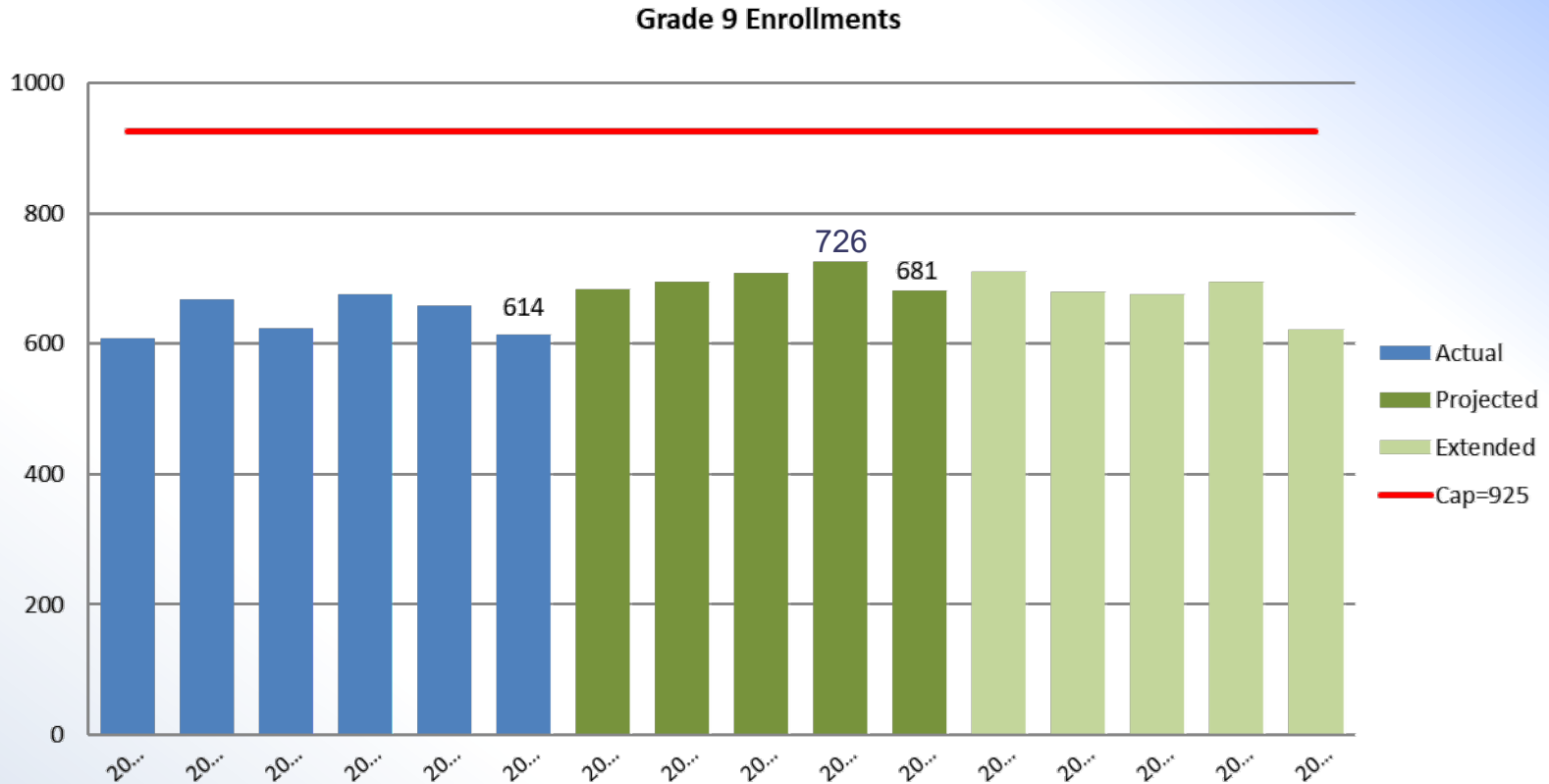


64 Gr 8 students are added from new housing in the projection period. Projected enrollments peak at 722 students, 189 students under DP Capacity.





# Gr 9 Enrollment Projections



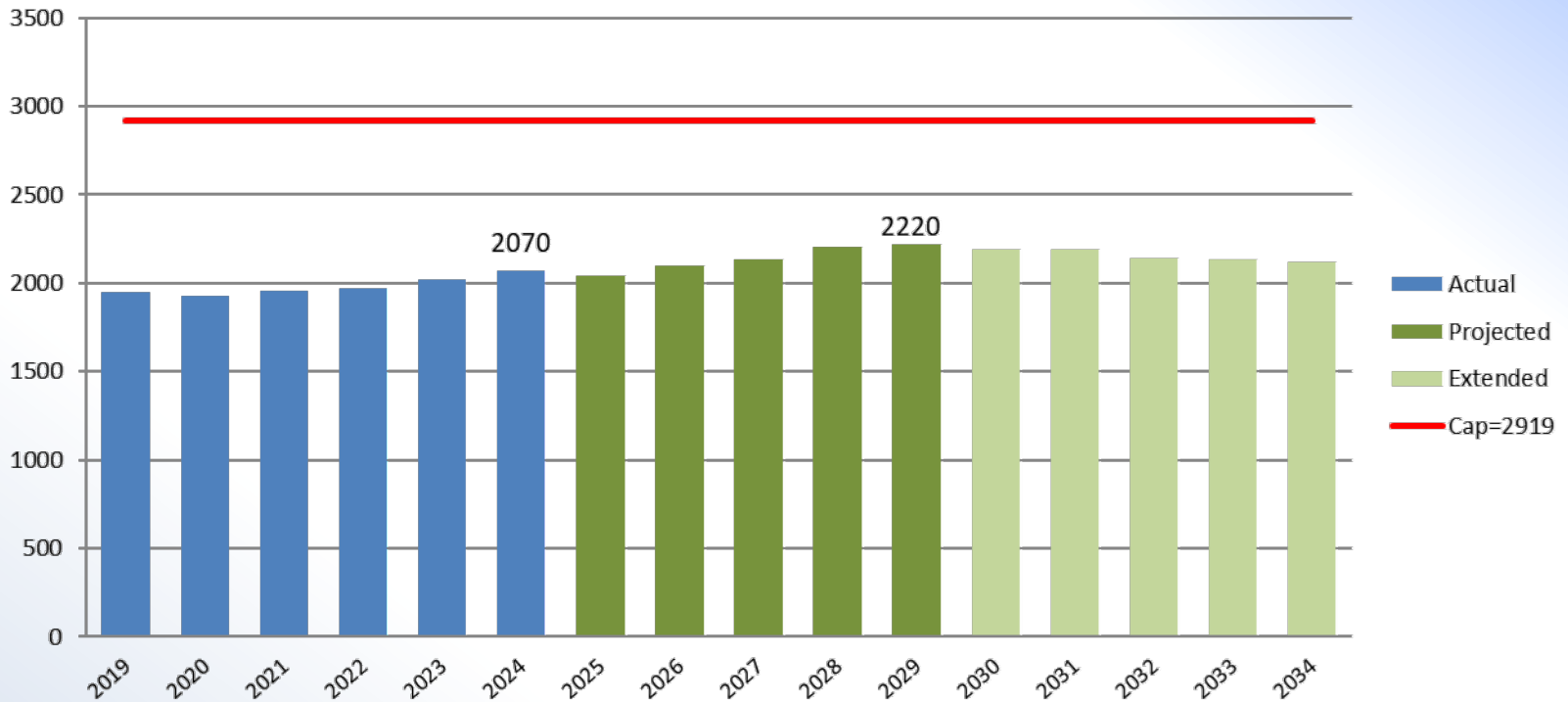
64 Gr 9 students are added from new housing in the projection period. Projected enrollments peak at 726 students, 199 students under DP Capacity.





# High School Gr 10-12 Enrollment Projections

High School Grade 10-12 Enrollments



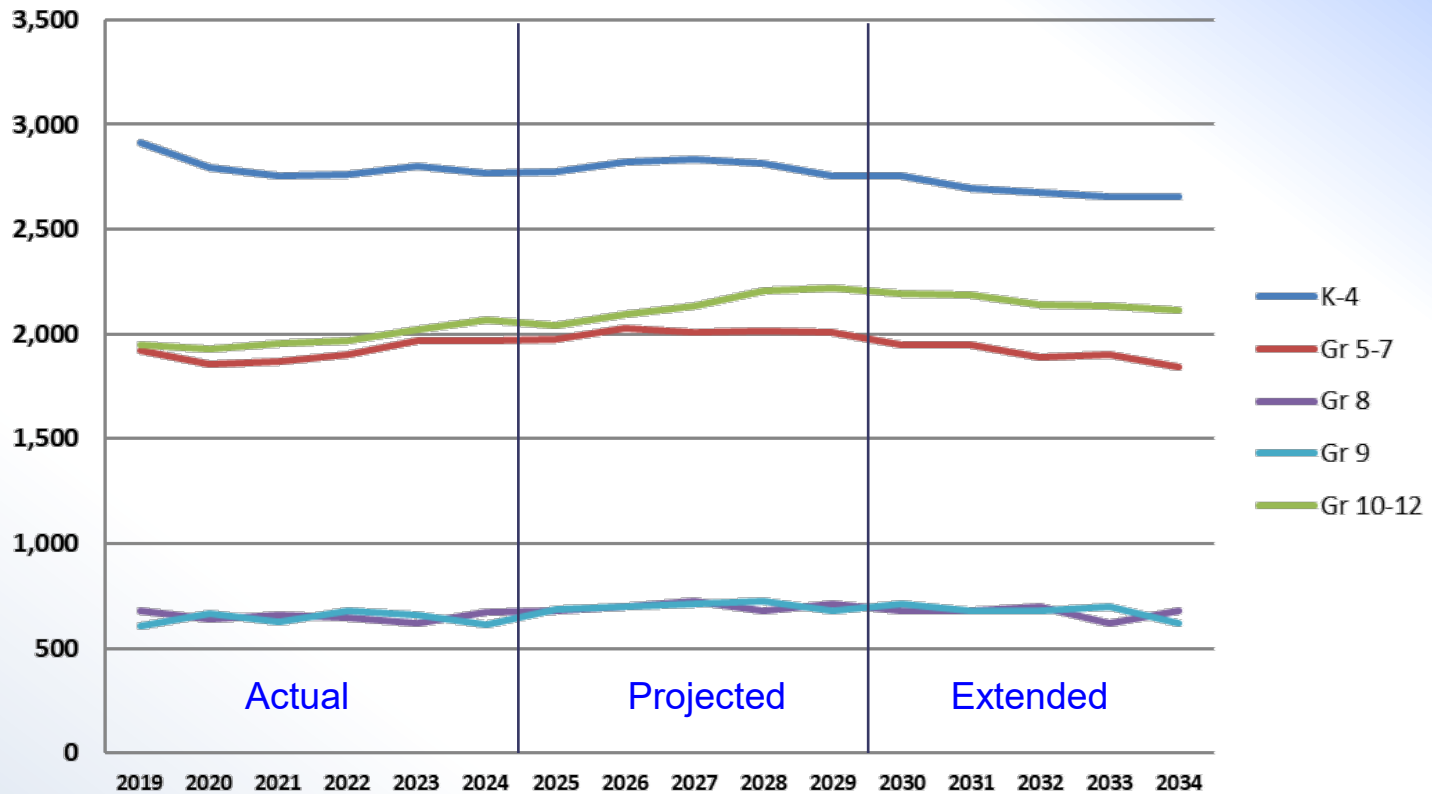
In the projection period enrollments will continue to increase by 150 students, ending the projection period at 2,220 students, after having added 192 students from new housing.





# Comparative Enrollment Projections

Comparative Enrollments by Grade Level Organization



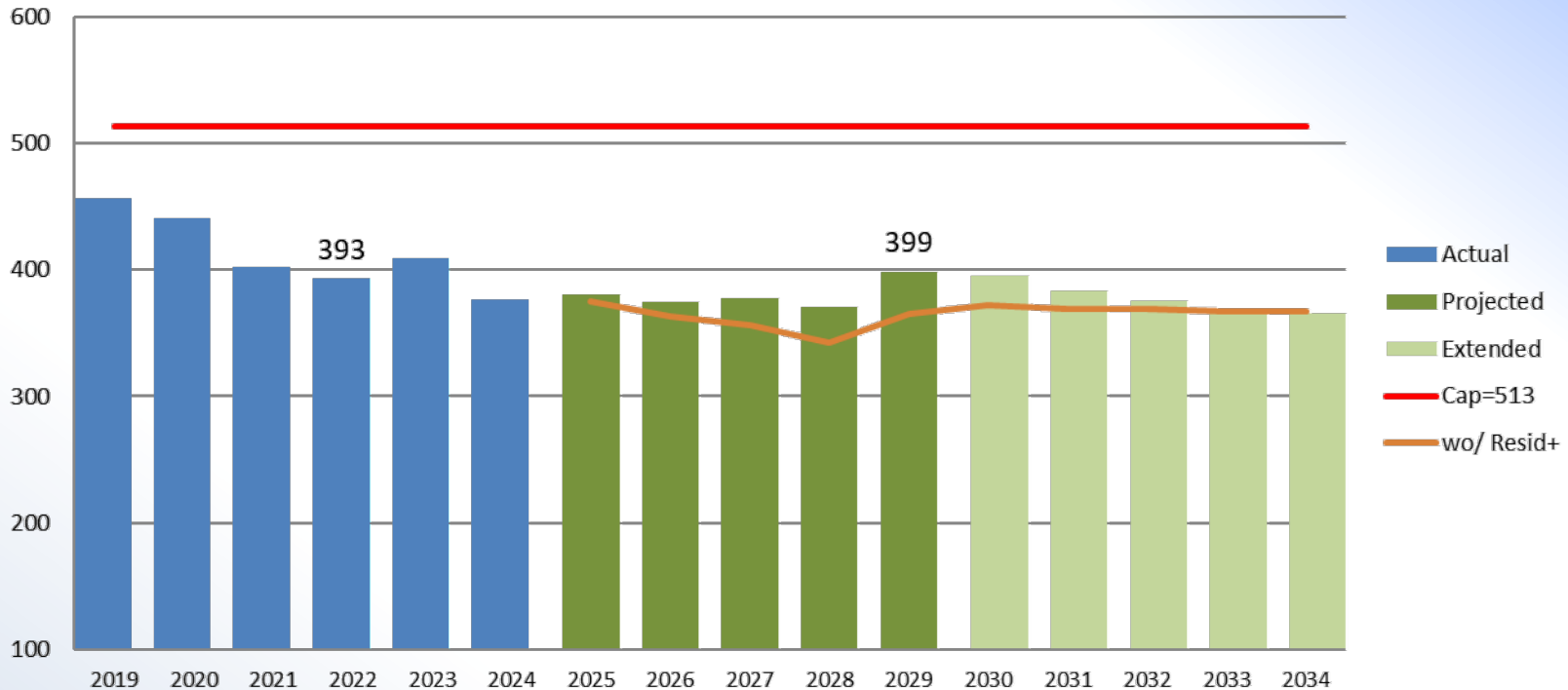
Enrollments are stable at all Grade Levels except High School which is increasing.





# Brooke ES K-4 Enrollment Projections

Enrollments: Actual & Projected



50 students are added from new housing in the projection period. On average, enrollments are 132 students under capacity in the projection period.





# Brooke ES K-4 Enrollment Projections

## Student Counts by Year and Grade

### Brook Elementary School Enrollments

							K-4	
		K	1	2	3	4	TOTAL	Average Change % Chg
<b>Actual</b>	2019	79	83	108	93	94	457	
	2020	77	85	82	106	91	441	
	2021	60	67	90	83	102	402	
	2022	63	73	75	92	90	393	413
	2023	74	80	79	79	97	409	
	2024	45	85	81	91	75	377	-80 -17.5%
<b>Projected</b>	2025	60	51	91	86	93	381	
	2026	67	68	55	96	88	375	
	2027	66	77	74	60	99	378	381
	2028	68	76	84	80	63	371	
	2029	66	78	82	90	83	399	22 5.7%
<b>Extended</b>	2030	64	73	82	86	90	395	
	2031	64	71	77	85	86	383	
	2032	64	71	75	80	86	376	378
	2033	64	71	75	78	81	368	
	2034	64	71	75	78	78	366	-33 -8.4%





# Brooke ES K-4 Enrollment Projections

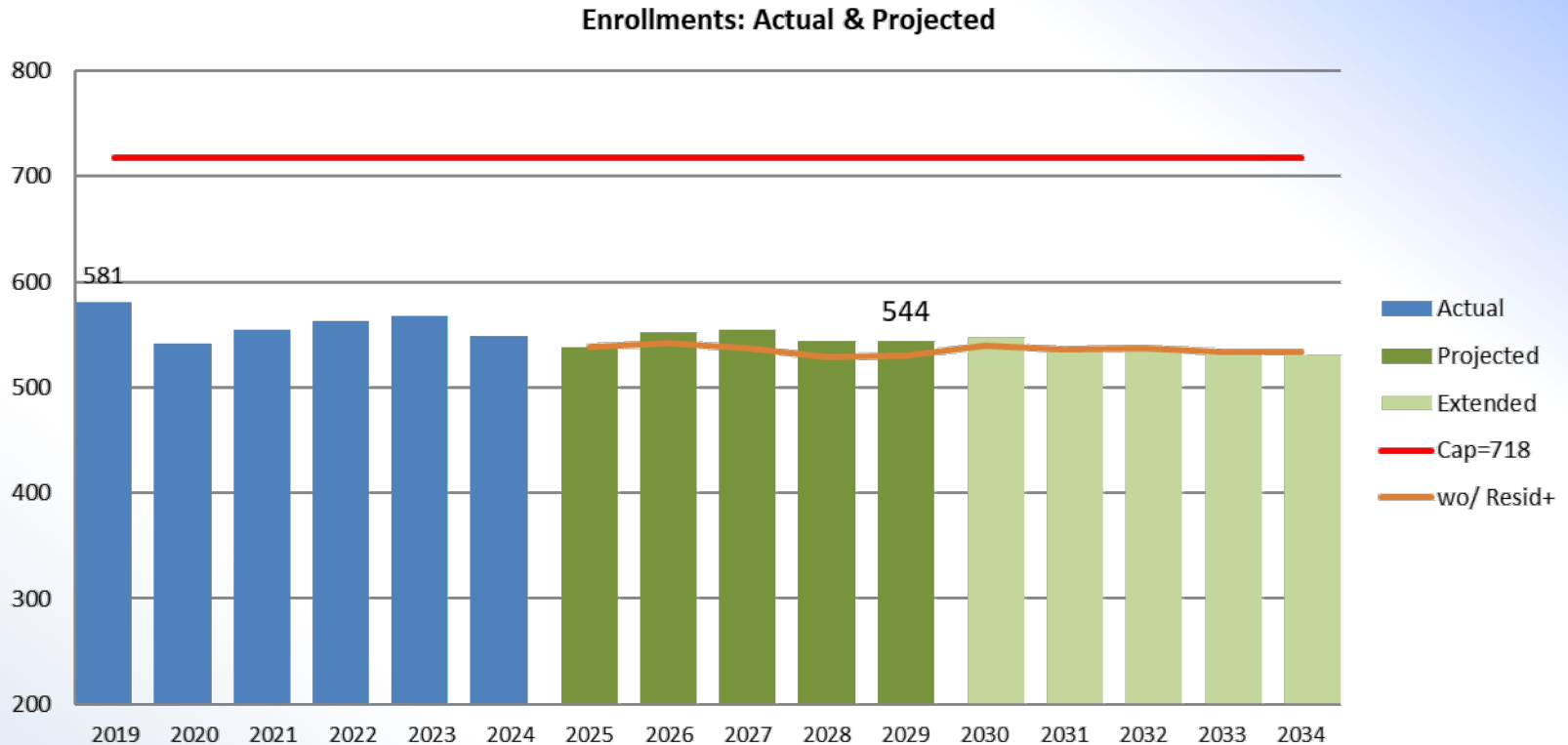
## Section Counts by Year and Grade

		Sections					
		22	22	24	24	24	
		K	1	2	3	4	Total
<b>Actual</b>	<b>2019</b>	4	4	5	4	4	21
	<b>2020</b>	4	4	4	5	4	21
	<b>2021</b>	3	4	4	4	5	20
	<b>2022</b>	3	4	4	4	4	19
	<b>2023</b>	4	4	4	4	5	21
	<b>2024</b>	3	4	4	4	4	19
<b>Projected</b>	<b>2025</b>	3	3	4	4	4	18
	<b>2026</b>	4	4	3	4	4	19
	<b>2027</b>	4	4	4	3	5	20
	<b>2028</b>	4	4	4	4	3	19
	<b>2029</b>	3	4	4	4	4	19
<b>Extended</b>	<b>2030</b>	3	4	4	4	4	19
	<b>2031</b>	3	4	4	4	4	19
	<b>2032</b>	3	4	4	4	4	19
	<b>2033</b>	3	4	4	4	4	19
	<b>2034</b>	3	4	4	4	4	19





# Evans ES K-4 Enrollment Projections



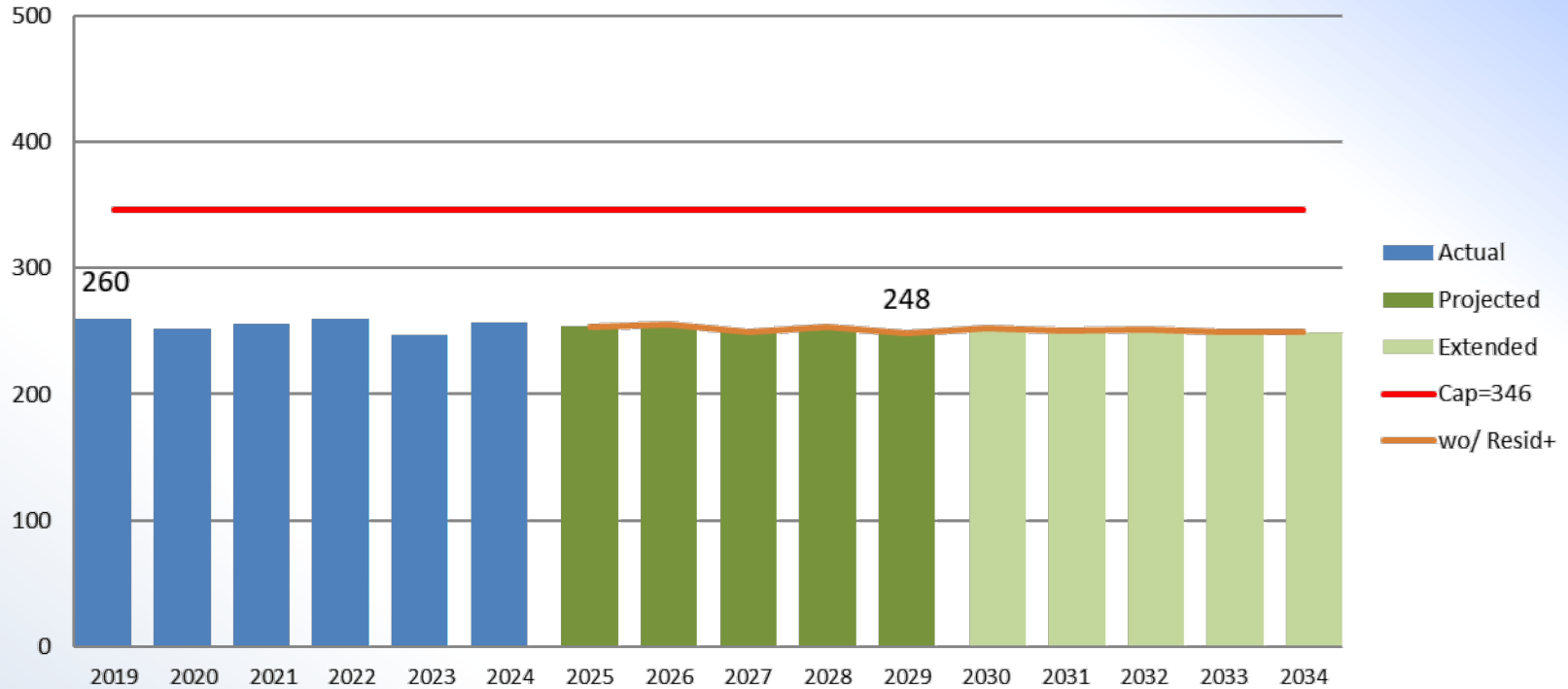
25 students are added from new housing in the projection period. Projected enrollments peak at 554 students in 2027. On average, enrollments are 172 students under capacity in the projection period.





# Limerick ES K-4 Enrollment Projections

Enrollments: Actual & Projected

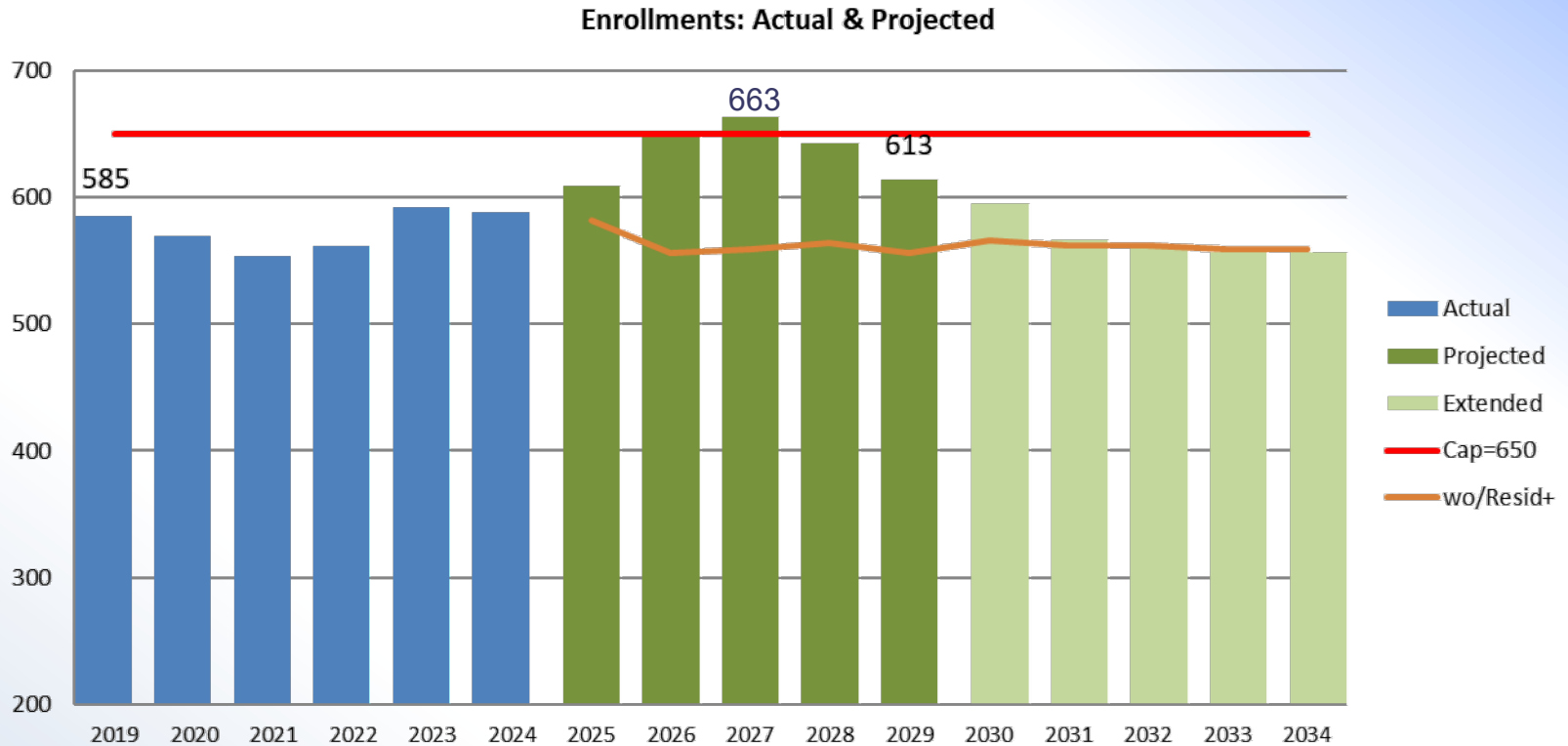


The Projection Period is stable and ends the period with a loss of 9 students after 2 students are added from new housing. Enrollments average 94 students under Capacity in the Projection Period.





# Oaks ES K-4 Enrollment Projections



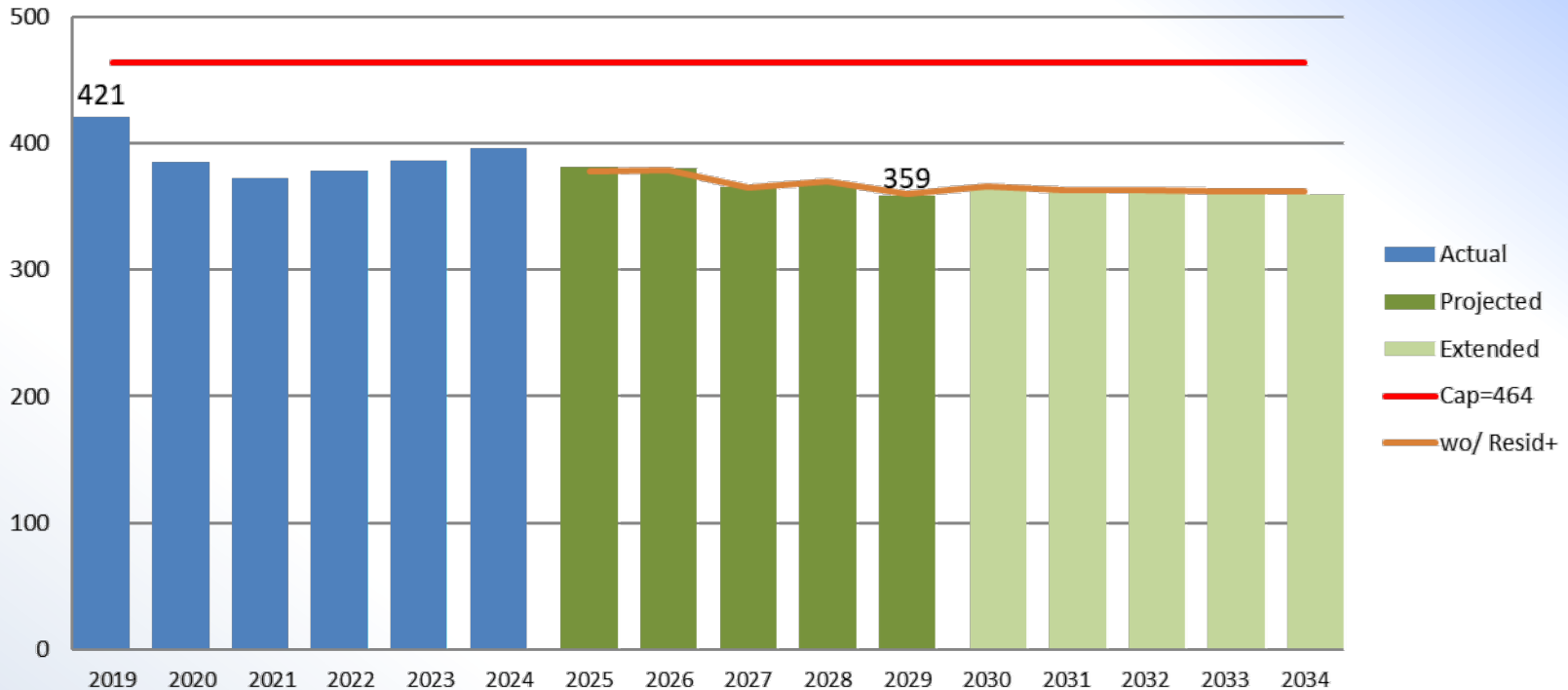
The Projection Period peaks at 663 in 2027, **over capacity**, and ends the period with a gain of 25 students after 128 students are added from new housing.





# Royersford ES K-4 Enrollment Projections

Enrollments: Actual & Projected



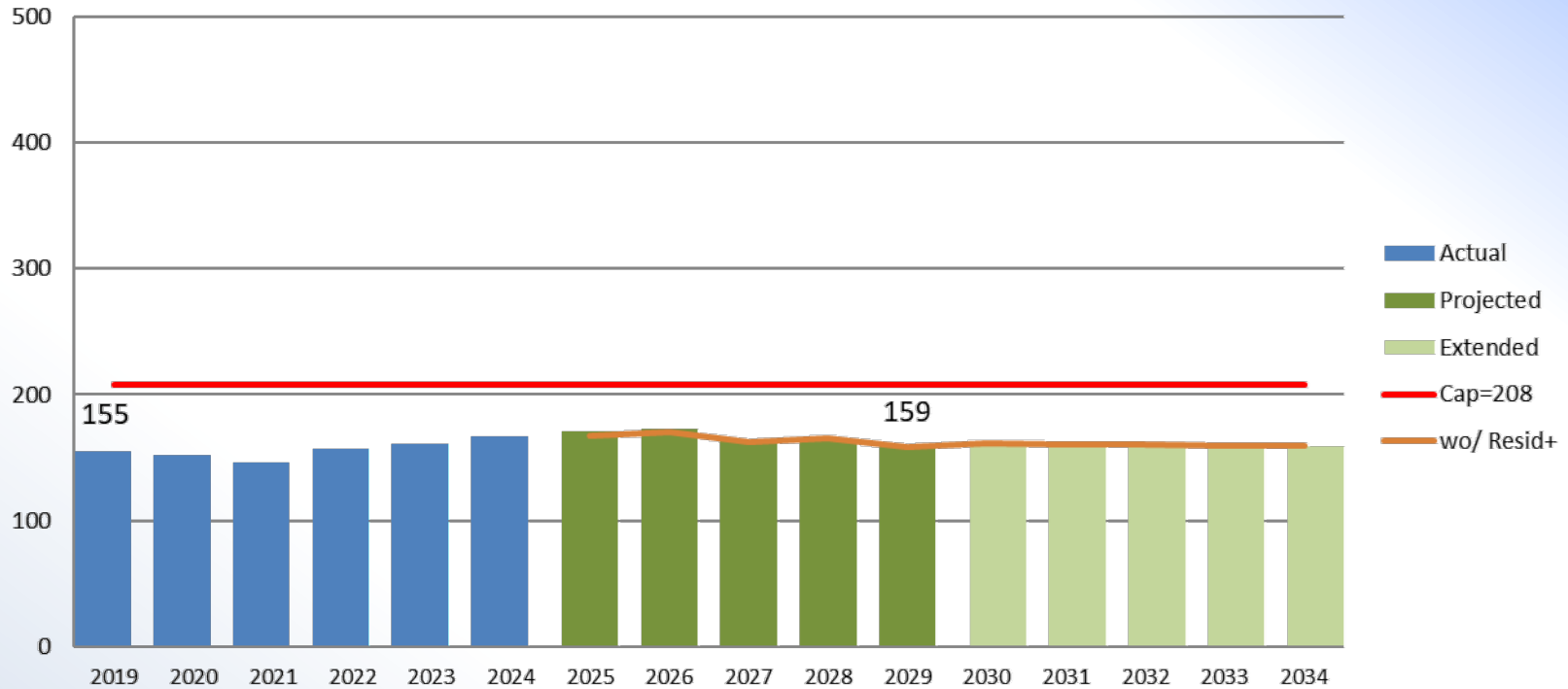
The Projection Period is decreasing and ends the period with a loss of 37 students after 4 students are added from new housing. Enrollments average 93 students under Capacity in the Projection Period.





# Spring City ES K-4 Enrollment Projections

Enrollments: Actual & Projected

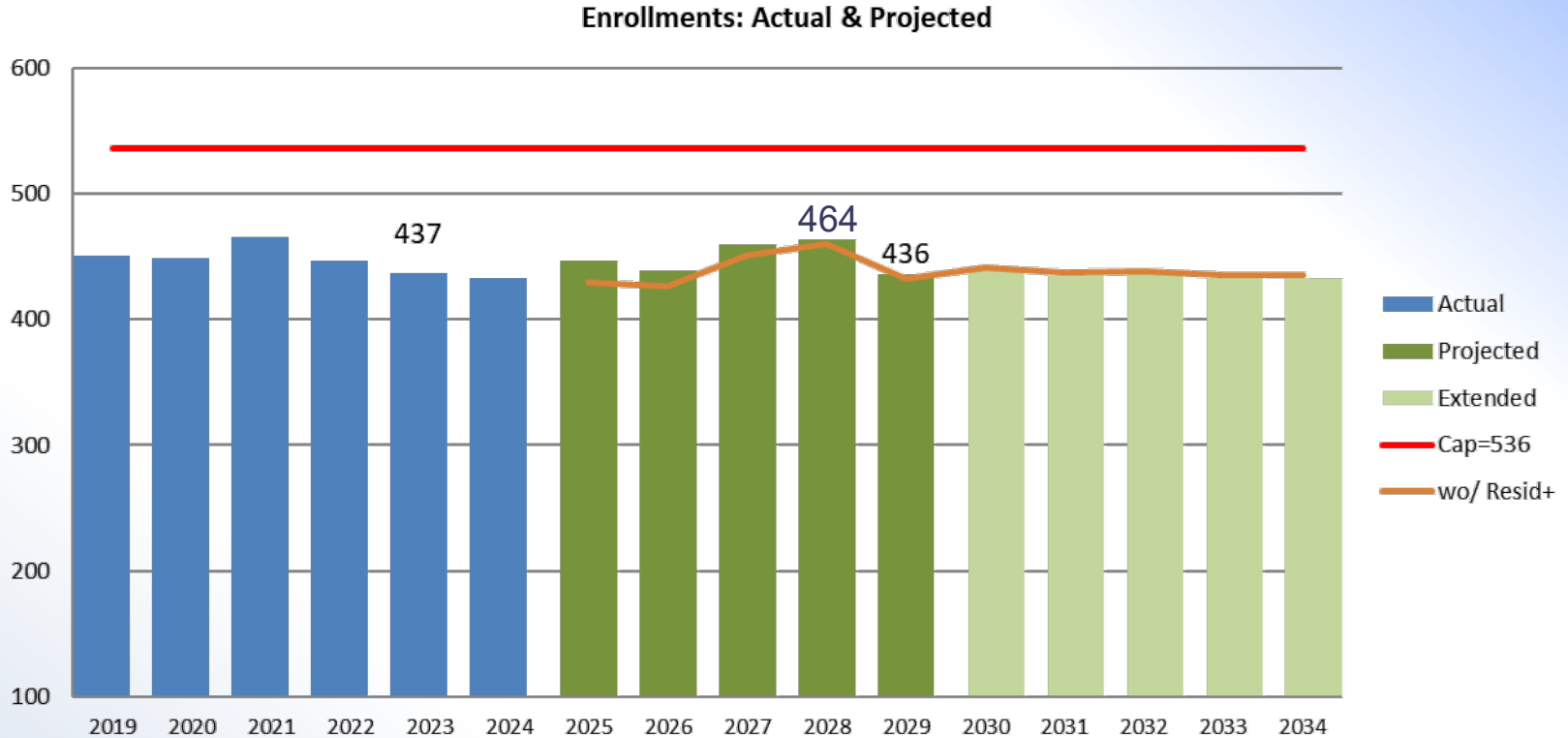


The Projection Period is stable and ends the period with a loss of 8 students after 4 students are added from new housing. Enrollments average 42 students under Capacity in the Projection Period.





# Upper Providence ES K-4 Enrollment Projections



The Projection Period is volatile, peaks at 464 in 2028 and ends the period with a slight gain of 3 students after 19 students are added from new housing. Enrollments average 87 students under Capacity in the Projection Period.





## Enrollment Projections District Summary

### District PK-Gr 12

With the addition of 594 students from new housing, District-wide enrollments will continue below the District Practice Capacity of 10,754 students in every year of the projection by an average of 2,412 students.

### PK- Gr 4

In the projection period enrollments will stabilize around an average of 2,801 students and end the period with a loss of 10 students after 228 were added from new housing. Enrollment is under DP Capacity an average of 634 students.

### Gr 5-7

138 Gr 5-7 students are added from new housing in the projection period. Projected enrollments peak at 2,017 students, 547 students under DP Capacity.

### Gr 8 & 9

Gr 8 and Gr 9 Centers average 189 and 199 students under capacity

### Gr 9-12

In the projection period enrollments will continue to increase by 150 students, ending the projection period at 2,220 students, after having added 192 students from new housing. . Enrollment is under DP Capacity an average of 892 students.





# Elementary Enrollment Projections Summary

	<b>SFASD</b>		<b>Target</b>	<b>Enroll</b>	<b>Excess</b>	<i>Excess</i>
	<b>Capacity</b>	<b>Utilization</b>	<b>Capacity</b>	<b>2029</b>	<b>Capacity</b>	<b>%</b>
<b>Elem Schools Gr K-4</b>						
Brooke	513	90%	462	399	63	12%
Evans	718	90%	646	544	102	14%
Limerick	346	90%	311	248	63	18%
Oaks	650	90%	585	613	-28	-4%
Royersford	464	90%	418	359	59	13%
Spring City	208	90%	187	159	28	14%
Upper Providence	536	90%	482	436	46	9%
	<u>3,435</u>	<u>90%</u>	<u>3,092</u>	<u>2,757</u>	<u>335</u>	

Individual School Capacities are from the  
**Combined Facilities Report**

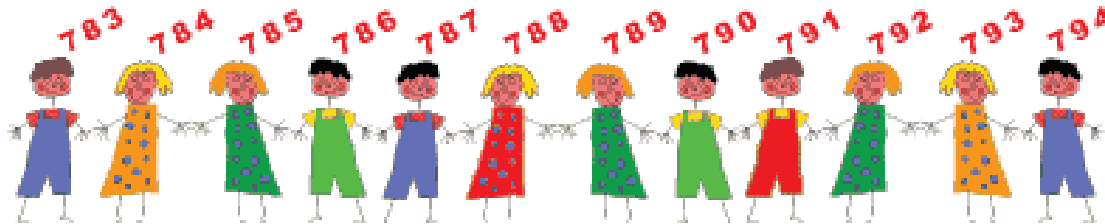
**SPRING-FORD AREA SCHOOL DISTRICT**

April 2020, Prepared by: ICS Consulting, April 2020





# Thank You



Sundance Associates  
117 Greenvale Ct.  
Cherry Hill, NJ 08034  
Tel 856-755-0174

[www.SundanceAssoc.com](http://www.SundanceAssoc.com)  
[GSundell@SundanceAssoc.com](mailto:GSundell@SundanceAssoc.com)

