



# Cherry Crest Open House

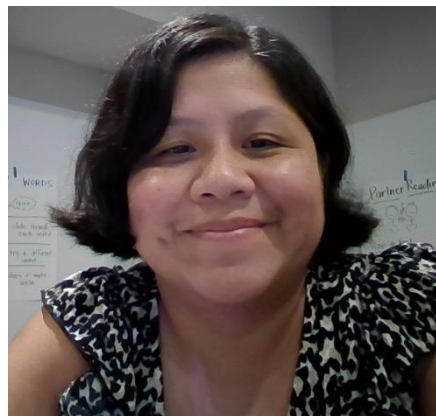
Principal Presentation December 10, 2024



# Meet The Admin Team

---

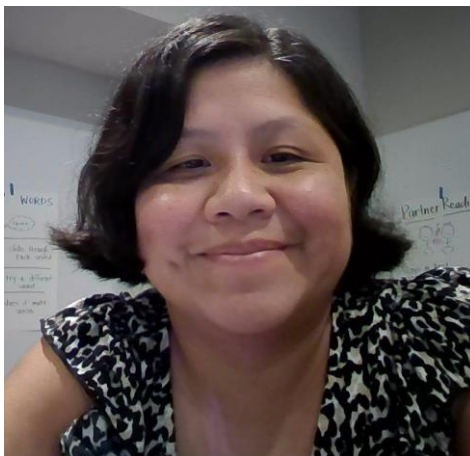
- Erin Stedman, Principal
- Amy Chu, Assistant Principal
- Akemi Chavez, Admin Intern



# Your Cherry Crest Office Support Team



Kathy Bessler – School Secretary  
Connie Kramer – Office Manager



Akemi Chavez-Aquino,  
Multilingual Learners  
(MLL) & Admin Intern



Melissa Sinisi –  
Instructional Teaching  
Curriculum Leader  
(ITCL)



Mykela Fantone - Counselor



Megan Chapin,  
Resource Room Teacher

# Cherry Crest Comm(*UNITY*)

553 AWESOME  
STUDENTS

23 classrooms

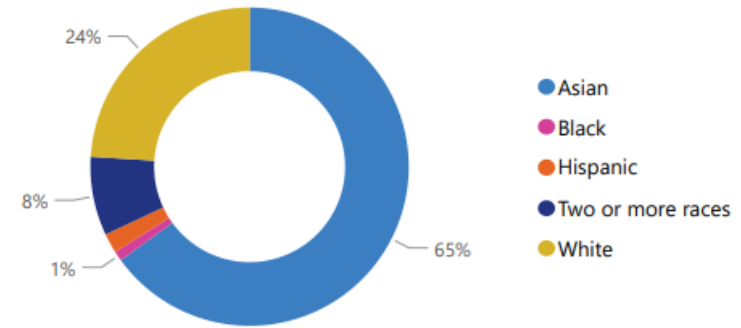
Average class size 24-31

Kinder class size = 22

*North feeder for Advanced Learning Program*

At Cherry Crest, **45% of students speak a first language other than English**, with an overall **32 first languages spoken**. We believe this is a true asset of our community and for students.

Racial Diversity




Grade Level	# of Classrooms
K	3
1	3
2	4
3	5
4	4
5	4





# Strategic Plan – Community Commitments

**Belong · Learn · Lead**

Strategic Plan Community Commitments	What People Want to Feel and Experience
	<ul style="list-style-type: none"> <li>• I am part of a community that cares for me.</li> <li>• This is my school. I belong here. I love its people. I am one of them.</li> <li>• People here are valued and known.               <ul style="list-style-type: none"> <li>◦ People who speak my language and share my culture are respected here.</li> <li>◦ As a person of color, I feel comfortable and safe in our buildings.</li> </ul> </li> </ul>
	<ul style="list-style-type: none"> <li>• We build a culture of innovation and learning for ALL community members.</li> <li>• We continuously reflect, learn, and improve.</li> <li>• We value mistakes and struggles as opportunities to grow.</li> </ul>
	<ul style="list-style-type: none"> <li>• We are agents of change in our own lives, our community, and our world.</li> <li>• We are intentional with our interactions and provide high quality services.</li> <li>• We know how to get and give help.</li> <li>• We create collective impact.</li> </ul>



# CHERRY CREST 3 R's



**CHERRY CREST CHARGERS ARE:**

**RESPECTFUL**

to all students and staff at school

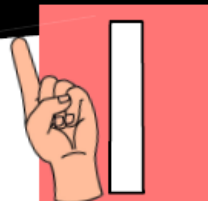
**RESPONSIBLE**

for people and things in your environment

**READY**

to make new friends, learn, and have fun!

**CHERRY CREST CHARGERS ARE:**



**RESPECTFUL**

to all students and staff at school



**RESPONSIBLE**

for people and things in your environment



**READY**

to make new friends, learn, and have fun!

# CHAMP CARDS



## New Tier 1 Incentive System!

- Students receive Champ Cards for following the 3 R's
- Moving towards a **WHOLE-SCHOOL** reward system
- Students earn them in **ALL** areas from **ANY** staff members
  - Classrooms
  - Hallways
  - Cafeteria
  - Playground
  - Literally anywhere around the school where you see students following the 3 R'S!

I earned a

# CHAMP CARD!

I was...

Respectful

Responsible

Ready

Name: \_\_\_\_\_ K 1st 2nd 3rd 4th 5th



# Ms. Mykela

## School Counselor

She supports:

- Our students, staff, and families
- Our Social-Emotional Learning curriculums
- Mental Health supports
- Varying learning and behavioral needs





---

**Co-Presidents**

Robert Schaudt

and

Shilpa Makineni

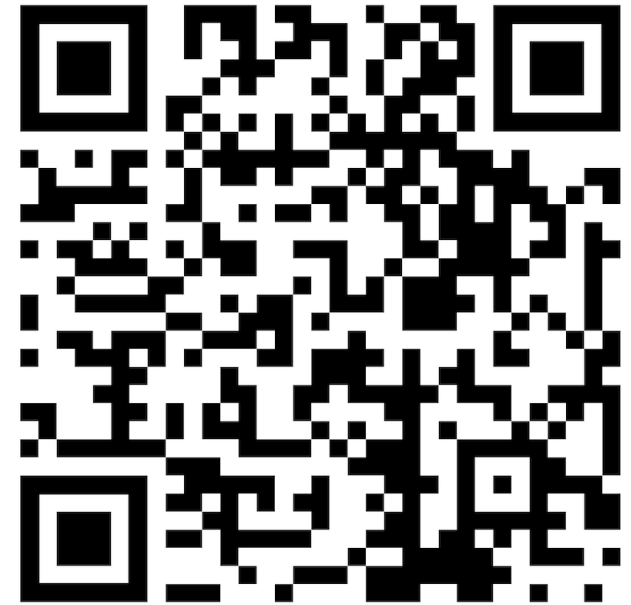
PRESIDENT@CHERRYCREST-  
PTSA.ORG



# Connect – Signup for Chatter

Bi-weekly communication about:

- Upcoming Events
- Important School News
- Reminders
- Clubs & Activities
- Volunteer Opportunities



Chatter Newsletter Signup



Look for a chance to win special prizes hidden in the chatter throughout the year



# Engage – Join Events & Volunteer

---

Help with exciting events like:

- Carnival
- Family STEM Night
- Festival of Cultures
- Walkathon
- Movie Nights
- School Dance ...

Help you Curriculum Enhancement (CE) rep with field trips and other classroom or grade level asks



'24-'25 Calendar

# About Us

Learn more about the PTSA and what we do for your students and families.



# Donate

Goal:

**100%**

**Participation**

whatever you can give, helps us



**\$450 donation per student**  
can fund us for a year

# Volunteer

Make a Difference in Your Child's Education!





# Enrollment Criteria

## **OPEN TRANSFER (Ends January 17<sup>th</sup> @ 4:00 PM)**

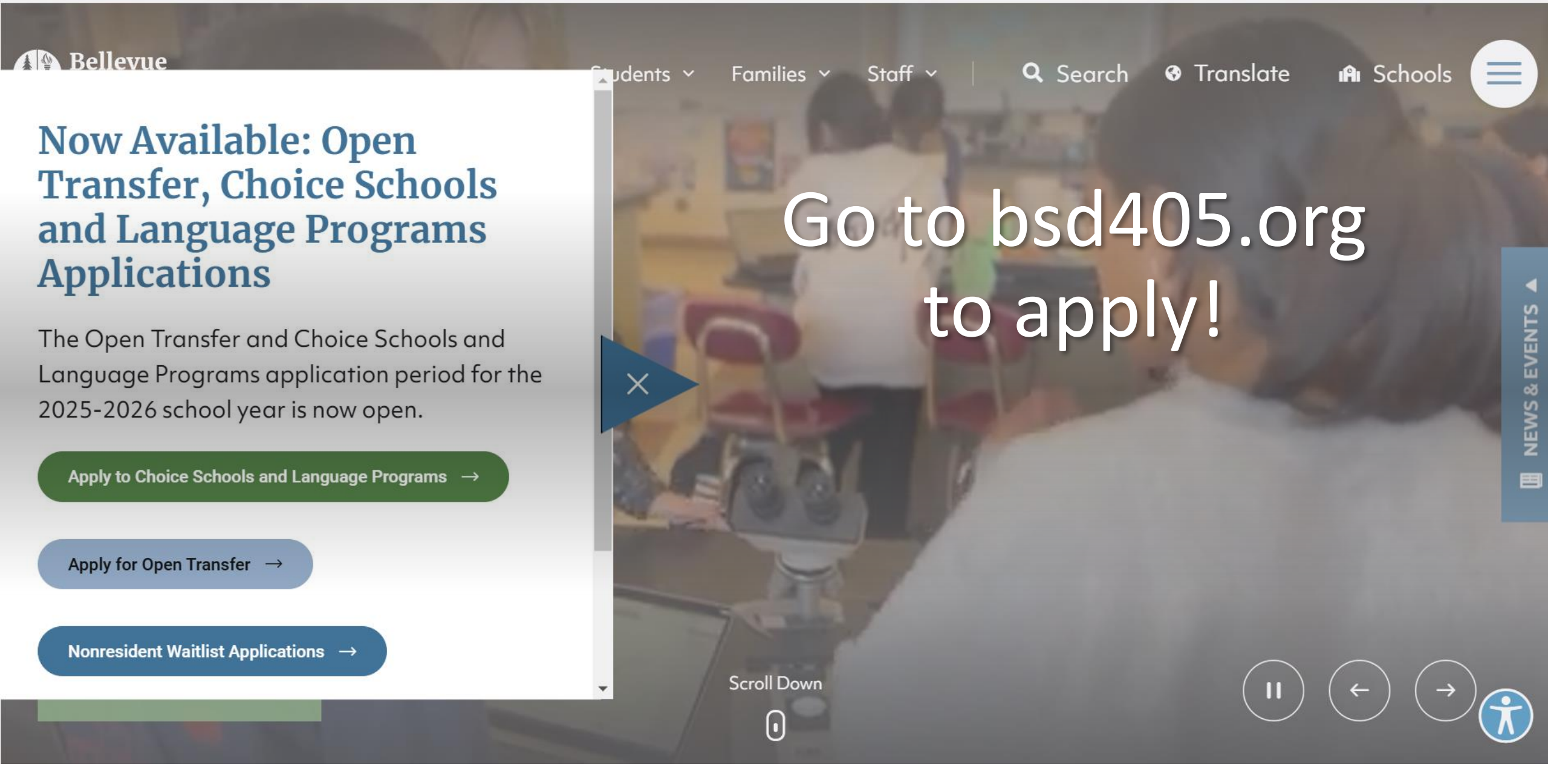
Open Transfer is for Bellevue School District students who wish to apply to enroll in a school other than their home attendance area school.

### **Our School's Status:** Cherry Crest is listed as “possible”

*Possible means there may be some opportunity at specific grade levels closer to the start of school. It will depend what actual enrollment numbers and class size. Notification could occur before the end of this school year, with some notifications in August or September.*

### **What if I don't live in your preferred school's transfer area?**

Apply to BSD by following the enrollment process and request to be placed on the waitlist



# Now Available: Open Transfer, Choice Schools and Language Programs Applications

The Open Transfer and Choice Schools and Language Programs application period for the 2025-2026 school year is now open.

[Apply to Choice Schools and Language Programs →](#)

[Apply for Open Transfer →](#)

[Nonresident Waitlist Applications →](#)

# Go to [bsd405.org](https://bsd405.org) to apply!



Scroll Down





# ADVANCED LEARNING SERVICES IN BSD

- **Students in need of advanced learning services have an exceptional ability to learn and reason beyond their same-age peers. These children exhibit a high ability to make meaning out of complex concepts or problems. In accordance with WAC 392-170-055, Bellevue School District uses multiple criteria for identification of students including cognitive ability testing and achievement data.**
- **Consider applying for services for your child if your child has:**
  - advanced vocabulary for their age
  - strong reading skills
  - demonstrates high interest in numbers
  - is imaginative
  - finds interesting solutions to problems
  - understands information quickly
  - may prefer to interact with adults or older children

**Apply Annually mid-Sept to mid-October**

Visit the **Advanced Learning Services** webpage to learn more about Advanced Learning Services and to apply for your student.



Learn more by scanning QR code or  
<https://bsd405.org/services/advanced-learning>



# ADVANCED LEARNING WEB PAGES

---

<https://bsd405.org/services/advanced-learning/>

## Advanced Learning

Application Process

Change of Service Options

Curriculum

Identification Process

Math Sequence

Screening Process

Services We Provide

Testing Dates

Tests

Transfer Process

When to Test Your Child



# DOMAIN SPECIFIC IDENTIFICATION & SERVICES

- ▶ Students who exhibit *exceptionalities* in specific content/reasoning domains are identified as **Domain Specific (DS)**.
- ▶ **DS** students qualify for services and receive content and process differentiation in *Math*, or *Literacy* provided by the student's teacher.
- ▶ Examples of DS services could include:

Domain Specific – Math	Domain Specific - Literacy
Differentiated math groups	Differentiated literacy groups
Extensions	Depth and Complexity Prompts
Extended problem-solving opportunities	Higher level reading materials



# Kindergarten Enrollment and Early Entrance

## Kindergarten Enrollment:

### What do I need to enroll?

- A child who is five years old on or before August 31
- Your child's birth certificate
- Enrollment Packet
- Required health information including immunization history
- Two emergency contacts including name, address and phone number
- **To enroll your kindergarten student, visit the [Enroll at BSD](#) webpage.**
- <https://www.bsd405.org/enroll>

## Early Entrance:

- Applications for early entrance to kindergarten are now closed for the 2024-2025 school year.
- Early entrance to kindergarten applications for the 2025-26 school year, **will open on March 1, 2025.**
- **We will hold a TEAMS information meeting in February 2025. Check back in January 2025 for the date and time.**

## Contact Information:

<https://www.bsd405.org/enroll/kindergarten/early-entrance-to-kindergarten>

425-456-4073

[EEK@bsd405.org](mailto:EEK@bsd405.org)



# 2025-2026 Preschool Option at Cherry Crest

## Cherry Crest is now a P-5 school!

- 2 classrooms
- Ages 3-5
- 10:1 teacher to student ratio
- Maximum 20 students per class
- Right at School (Before and Afterschool care options for preschoolers)



# Preschool Enrollment

- <https://www.bsd405.org/enroll/preschool/preschool-application>
- Look for enrollment opportunities beginning in January or February of 2025!
- 2025-2026 registration for before and afterschool care will open in March and is done through [Right at School](#).



## Cost

- **School Day:** 6.5 hours on Monday, Tuesday, Thursday and Friday and 4 hours on Wednesday:
  - \$1,375 per month for Bellevue Residents
  - \$1,570 per month for out of district residents
- **Half Day:** 3 hours on Monday, Tuesday, Thursday, Friday:
  - \$650 per month for Bellevue Residents
  - \$780 per month for out of district residents
- Please email [preschooloffice@bsd405.org](mailto:preschooloffice@bsd405.org) or contact our office at 425-456-4030 to learn more about tuition assistance/scholarship based on [Poverty Guidelines](#), [Working Connections Child Care subsidy](#), and [ECEAP](#) (Washington state tuition free preschool for qualifying families).

# On Site After Care @ Cherry Crest

Cherry Crest BGCB Site Director – Sage Cole: [scole@bgcbellevue.org](mailto:scole@bgcbellevue.org)



**CONTACT US:**  
[BGCBellevue.org/Programs](http://BGCBellevue.org/Programs)  
Phone: 425-454-6162



## Project Learn

Programs available before  
and after school!

Registration Opens March 2025

## Summer Camp

Nine weeks of all day  
summer camp programs!

## Athletics Programs

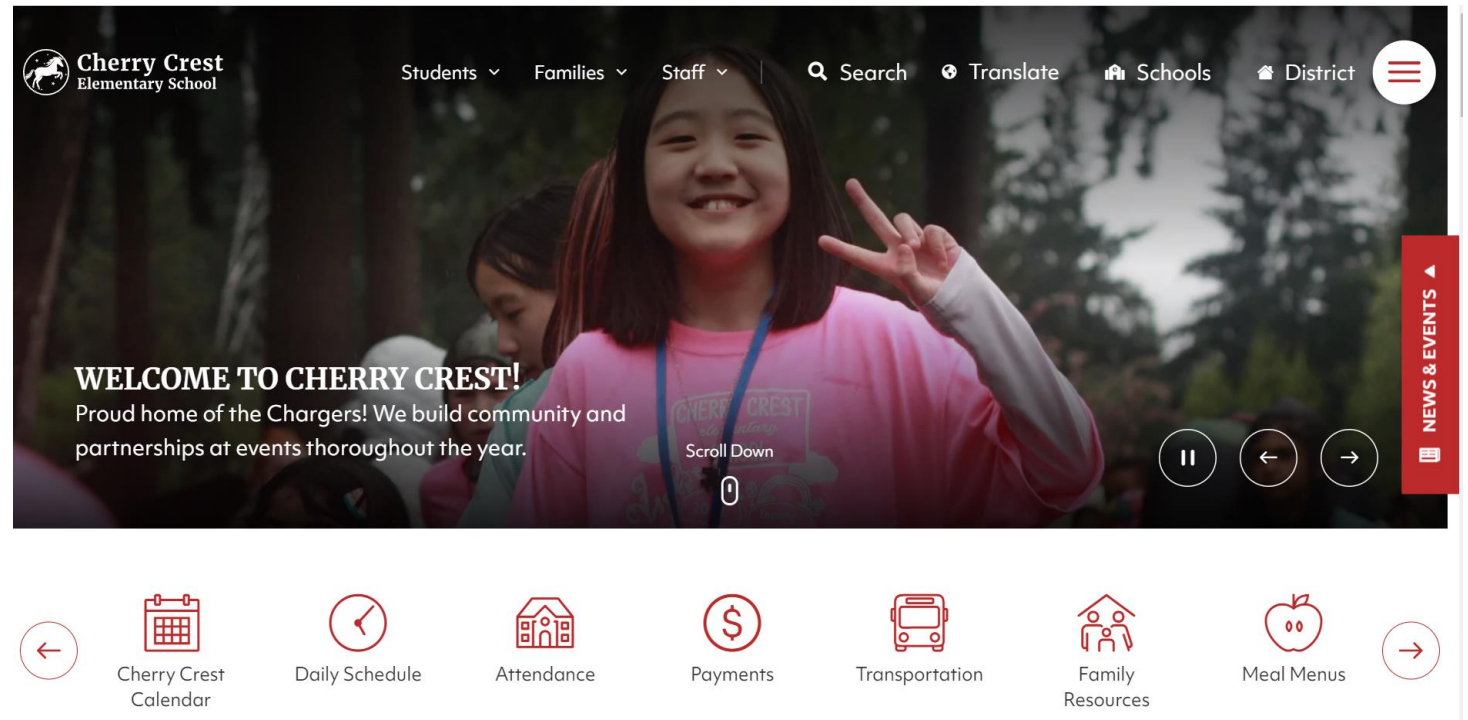
Enroll in football, track, or  
other sports at our Hidden  
Valley Fieldhouse!



# Contact Us!

---

- **Erin Stedman, Principal**  
[stedmane@bsd405.org](mailto:stedmane@bsd405.org)
- **Amy Chu, Assistant Principal**  
[chua@bsd405.org](mailto:chua@bsd405.org)
- **Office Manager, Connie Kramer**  
[kramerc@bsd405.org](mailto:kramerc@bsd405.org)  
425-456-4900
- **Website:**  
[cherrycrest.bsd405.org](http://cherrycrest.bsd405.org)





# Our Mission

Our mission is to prepare all students to become life-long learners through inquiry, collaboration and discovery. Each student will feel a sense of belonging in our community while learning social emotional and academic skills to be successful in an ever-changing and diverse society.



Please take a map to do a self-guided school tour!