



Course Registration Health, Medical & Human Services

2025-2026 School Year



GRADUATION
REQUIREMENTS



24 CREDITS



GRADUATION PROJECT



KEYSTONES - must attain
proficiency through one
of five pathways



Registration

Registration is
open in
Student Portal

Course
selection is due
by January
16th

School
Counselors are
available

4-Year Planning Guide

- ▶ Most students will need 1.0 credit of English, 1.0 credit of Social Studies, 1.0 credit of Math and 0.5 credit of PE
- ▶ What other graduation requirements will you need?
- ▶ Let's go to the Registration Screen/4-Year Planning Guide



Registration Page

Career Pathway **Health, Medical, and Human Services** ▾

[Click here for career pathway information](#)

Course Registration Mode

Grades 9-12

Required Courses 24 Credits Minimum 23.7 Credits Earned/Planned	Grade 9 7.9 Credits Earned	Grade 10 7.9 Credits Earned	Grade 11 7.9 Credits Earned	Grade 12 6 Credits Minimum 0 Credits Planned
English 4 Credits Required (1 Cr/Year) 3 Credits Earned/Planned	HON ENGLISH 9 0125 (1 Cr)	HON ENGLISH 10 0135 (1 Cr)	AP LANGUAGE/COMP 0146 (1 Cr)	Add +
Social Studies 4 Credits Required (1 Cr/Year) 3 Credits Earned/Planned	HON US HISTORY 1 0225 (0.5 Cr) HON US HISTORY 2 0226 (0.5 Cr)	AP WORLD HISTORY: MODERN 0237 (1 Cr)	AP US HISTORY 0247 (1 Cr)	Add +
Math 4 Credits Required (1 Cr/Year) 3 Credits Earned/Planned	HON GEOMETRY 0325 (1 Cr)	CHS ALGEBRA 2 0335 (1 Cr)	CHS PRECALCULUS/TRIG 0355 (1 Cr)	Add +
Science 2 Credits Required 2.8 Credits Earned/Planned	HON BIOLOGY 0435 (1.4 Cr)	CHS CHEMISTRY 0465 (1.4 Cr)		Add +
Physical Education 2 Credits Required (0.5 Cr/Year) 1.5 Credits Earned/Planned	PHYS ED (FEMALE)-WR (F) 0721 (0.5 Cr)	PHYS ED 10 5730 (0.5 Cr)	PHYS ED 11 5740 (0.5 Cr)	Add +
Health 0.5 Credits Required 0.5 Credits Earned/Planned		HEALTH 0735 (0.5 Cr)		Add +
Arts/Humanities 2 Credits Required 2 Credits Earned/Planned	JOURNALISM: FUND WRIT/ETH 0170 (0.5 Cr) HON GERMAN 3 0536 (1 Cr) ART MEDIA 0762 (0.5 Cr)			Add +
STEM 1 Credit Required 1 Credit Earned/Planned			AP/CHS PSYCHOLOGY 0276 (1 Cr)	Add +
Electives 4.5 Credits Required 6.9 Credits Earned/Planned	↓SYMPHONIC BAND 0920 (1 Cr)	↓ADV CREATIVE WRITING 0175 (0.5 Cr) ↓HON GERMAN 4 0537 (1 Cr) ↓SYMPHONIC BAND 0920 (1 Cr)	↓CHS SPEECH 0172 (0.5 Cr) ↓AP/CHS BIOLOGY 0436 (1.4 Cr) ↓POTTERY/CERAMIC TECH 0772 (0.5 Cr) ↓SYMPHONIC BAND 0920 (1 Cr)	Add +
Substitute Elective #1 ⓘ Course cancellations and conflicts are possible. Please select four (4) substitute electives to ensure a complete schedule.				Add +
Substitute Elective #2 ⓘ				Add +
Substitute Elective #3 ⓘ				Add +
Substitute Elective #4 ⓘ				Add +
Full-time Cyber & Release Choose Fall, Spring or both depending on course selections.				Add +

Career Pathway






Health, Medical, and Human Services



[Click here for career pathway information](#)

Course Registration Mode

Grades 9-12

Required Courses		Grade 12 
		6 Credits Minimum 0 Credits Planned
English		Add +
Social Studies		Add +
Math		Add +
Science		Add +
Physical Education		Add +
Health		Add +
Arts/Humanities		Add +
STEM		Add +
Electives		Add +
Substitute Elective #1		Add +
Course cancellations and conflicts are possible. Please select four (4) substitute electives to ensure a complete schedule.		
Substitute Elective #2		Add +
Substitute Elective #3		Add +
Substitute Elective #4		Add +
Full-time Cyber & Release		Add +
Choose Fall, Spring or both depending on course selections.		

Science/STEM Electives In-Person

▶ Possible Careers: Medical School, Physician Assistant, Nursing, Physical Therapy, Exercise Science, Athletic Trainer, Pharmacy, Associate Health Degrees, etc...

▶ **ALL CAREER PATHS LISTED ABOVE Should Take:**

- **AP Biology** and possibly a 3rd biology, **Honors Molecular**
- **Anatomy 1 (junior/senior) and 2 (senior only)**
- **Chemistry** (AP and or Organic Chemistry)
- **Physics** (PhD degrees- PT, Medical School, Occupational)
- **Biotechnology Research Lab**
- ***Psychology** (Intro/AP), **Sociology**
- ***Statistics + Calculus** (for PhD programs)
- ***Computer Science** – Research
- ***Foreign Language**
- **Special Health Degrees:** Food Chemistry, Food Science and Nutrition, Family Sociology, Criminal Investigations



When in Doubt- Check course catalog at a college of interest!

b. Two courses of Chemistry with labs

We will accept any chemistry course with a lab.

c. Two courses of Physics with labs

We will accept any physics course with a lab.

d. Two courses of Psychology

We will accept any psychology courses.

e. One course in Statistics



**Slippery Rock
Physical
Therapy**

Get Involved

➤ Colleges don't want to see a bunch of study halls on your schedule...Fill your schedule to show you have varying interests! And get involved in clubs!

- Medical Careers Club
- Science Honor Society
- Biology Club
- Best Buddies
- HOPE Squad

Science Electives (Cyber Only) Grades 9-12

Year Long Electives

- AP Environmental Science 1.4 CR (10-12)
 - Includes on campus wet labs, one every 9 weeks
- CHS Healthcare Concepts and Medical (10-12)
 - This College in High School course teaches the language of healthcare while also introducing students to conceptual learning within the healthcare arena.

Semester Electives

- Intro to Anatomy (10-12)
 - Introductory level course
- Ecology (9-12)
 - Course examines the environment and man's impact on it
- Environmental Science (9-12)
 - Course covers many aspects of environmental science including water, energy and resources, and societies and policy
- Animal Systems (9-12)
 - Course provides information on livestock-management practices, animal husbandry, physiological systems, and innovations in food production
- Environmental Service Systems (9-12)
 - Course examines environmental legislation and regulations, government agencies and organizations, and monitoring and testing methods
- Food Safety and Sanitation (9-12)
 - Course covers principles and practices of food safety and sanitation
- Agriculture: Plant Systems (9-12)
 - Course introduces students to the basics of plant biology, soil science, agriculture, and horticulture
- Global Science (9-12)
 - Course introduces various environmental and earth science concepts
- Health Science A (10-12)
 - Course introduces students to a variety of healthcare careers as they develop the basic skills required in all health and medical sciences
- Health Science B (10-12)
 - Continuation of Intro to Health Science A, where students build on the knowledge gained in part A as they master the basic skills required of all healthcare professionals
- Scientific Discovery and Development (9-12)
 - Course focuses on "laboratory careers", where students can learn about multiple jobs in laboratory science
- Scientific Research (9-12)
 - Course details scientific research from the point of view of a professional scientist
- STEM and Problem Solving (9-12)
 - Course outlines how to apply the concepts and principles of scientific inquiry, encouraging the use of problem-solving and critical-thinking skills to produce viable solutions to problems
- Advanced Topics in Chemistry (11-12)
 - Course covers topics in chemistry such as thermodynamics, kinetics, equilibrium, acids and bases, electrochemistry and nuclear chemistry. These topics are not normally discussed in a first-year chemistry course.
- Introduction to STEM (9-12)
 - Course introduces students to the four areas of Science, Technology, Engineering, and Mathematics through an interdisciplinary approach that will increase awareness, build knowledge, develop problem solving skills, and potentially awaken an interest in pursuing a career in STEM
- Forensic Science (9-12)
 - Course is an overview of modern-day forensic science careers at work using science concepts to collect and analyze evidence.

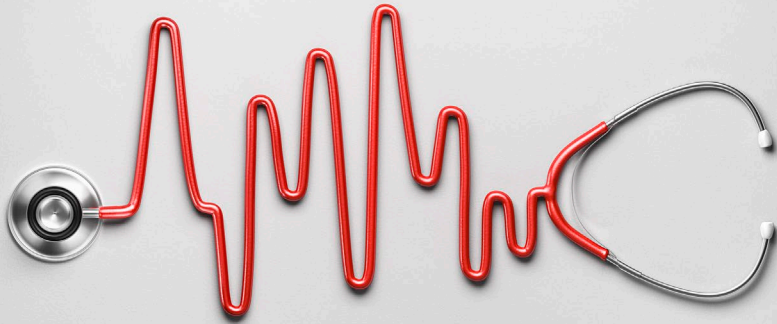
Any questions please email Ms. Bosco
boscorc@svsd.net

Health Electives-Cyber

Click on the [Course Name](#) for a description of the course

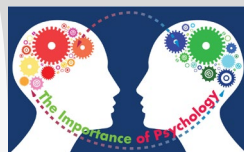
- [Medical Careers](#)
- [Healthcare Careers](#)
- [Nursing](#)
- [Human Growth & Development](#)
- [Social Work](#)
- [Therapy Careers](#)
- [Promoting Human Health](#)
- [Food Industry](#)

Questions? Chat M. Meeder, J. Pyle, T. Schoeffel, K. Wildrick



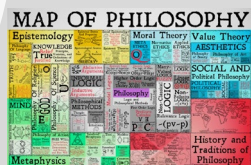
Pathway Courses in Social Studies – Traditional

Click on links for more information!



- **AP Psychology:** 1 credit
- **Intro. to Psychology:** 0.5 credits

https://senecavalley-my.sharepoint.com/:w:/g/personal/christea_svsd_net/Ed1Qs8iMjZ50q1AArcYUu9gB1p1yfeNELjgore5VmNxiIA?e=ElAYfN



- **CHS – Philosophy:** 0.5 credits

https://www.loom.com/share/5b30a48249f8433590cc9d234a7c7aad?sharedAppSource=team_library



- **AP Economics:** 1 credit
- **CHS or Regular Economics:** 0.5 Credits

https://senecavalley-my.sharepoint.com/:b:/g/personal/bulljt_svsd_net/EbCo5a25MB5Jt0mf598KgLABz-1cYqoRSrcVNpGFhnSQ



- **CHS – Sociology:** 0.5 credits

<https://www.loom.com/share/371ec37a22254da49fcc51c8d3415647>



- **Diverse Voices in US History:** .05 credits *11th grade elective – 12th SS credit

[Video — Kapwing](#)



- **Criminal Investigations** [Video — Kapwing](#)

0.5 credits *Elective Only

* **Advanced Experience Criminal Investigations**

0.5 Credits *Elective Only – Must have taken Criminal Investigations first

<https://www.kapwing.com/videos/67581700ae6f861cfdde4f08>



- **AP Government:** 1 credit
- **Honors or Regular Government:** 0.5 credits

https://senecavalley-my.sharepoint.com/:p:/g/personal/bulljt_svsd_net/EeJuc90PzdBnqrRSr5IbT0BqE1423L0t98r3jKokmtjTA



Heath, Medical, & Human Services

Social Studies Semester Courses – Cyber Options

5279 Criminology

5282 Security & Protective Services

5289 Corrections: Policies & Procedures

5291 Law Enforcement Field Services

5290 Fire & Emergency Field Services

How might one of these elective courses fit your pathway?

You could work for law enforcement agencies, work as a private detective, or in fire & emergency careers.

VOCATIONAL TECHNICAL

- ▶ Vo-Tech requests should submit 6.5 credits
- ▶ A separate Vo-Tech application is required for all Vo-Tech students (new students)
- ▶ Indicate the Vo-Tech program number during registration



INTERNSHIP & EMPLOYMENT

Seniors:

- ▶ 5651 Fall SR Internship and Employment
AND
- ▶ 5652 Spring SR Internship and Employment (This course meets your Social Studies requirement)

Juniors:

- ▶ 5649 Fall JR Internship and Employment
AND
- ▶ 5650 Spring JR Internship and Employment



SUBSTITUTE COURSES

The substitute course section of the registration is to be filled in completely

- Substitute courses must be different than the original requests
- Substitutes will be used if a scheduling conflict occurs or if a selected course is closed

Course selection changes may be made through **June 6, 2025**



SUMMER SCHOOL/ENRICHMENT

Registration opens **January 9, 2025**

Acceleration:

- ▶ Do not include the course on your registration form
- ▶ Can only request up to 1.0 credit
- ▶ Letter grades are calculated into each nine weeks of the upcoming school year

Credit Recovery:

- ▶ Pass/Fail courses
- ▶ Grade will be applied to this school year





EARLY RELEASE

ONLY Seniors will be eligible to request:

- 9th period early release
- 8th and 9th period early release

But:

- Some class selections will not allow it to happen
- Early release does not guarantee a parking pass
- Class sizes will not be compromised to accommodate for early release
- Must have a minimum of 6.0 credits
- There will be a box to check on the registration sheet

EARLY RELEASE

Electives Add +

Substitute Elective #1 Add +
Course cancellations and conflicts are possible. Please select four (4) substitute electives to ensure a complete schedule.

Substitute Elective #2 Add +

Substitute Elective #3 Add +

Substitute Elective #4 Add +

Full-time Cyber & Release Add +
Choose Fall, Sp

✕

Grade 12 Release Courses

Off Pathway
 Employee Override

Release							
	Type	Video	Course Num	Course Name	Length	Credits	Mtg Per Week
Add +	Traditional		0001	Release Period 8 Fall		0	
Add +	Traditional		0002	Release Period 8 Spring		0	
Add +	Traditional		0003	Release Period 9 Fall		0	
Add +	Traditional		0004	Release Period 9 Spring		0	
Add +	Cyber		5001	Full-time Cyber Fall		0	
Add +	Cyber		5002	Full-time Cyber Spring		0	

End of Grade 12 Release Courses