

Elementary Enrollment/Attendance Areas Committee January 6, 2024

Committee Purpose

- Address Decline in District-Wide Enrollment
- Maximize Use of District Resources
- Develop Recommendations/Options to Provide to School Board for Elementary Enrollment Areas

Committee Goals

- *Optimizing Capacity*- balance populations to make best use of available space
- *Equitable Access*- fair access to educational programs and facilities
- *Minimize Disruptions*- for learners and families
- *Maintain Efficiency*- travel time and middle school feeders
- *Future Needs and Considerations*- planning for future changes and needs

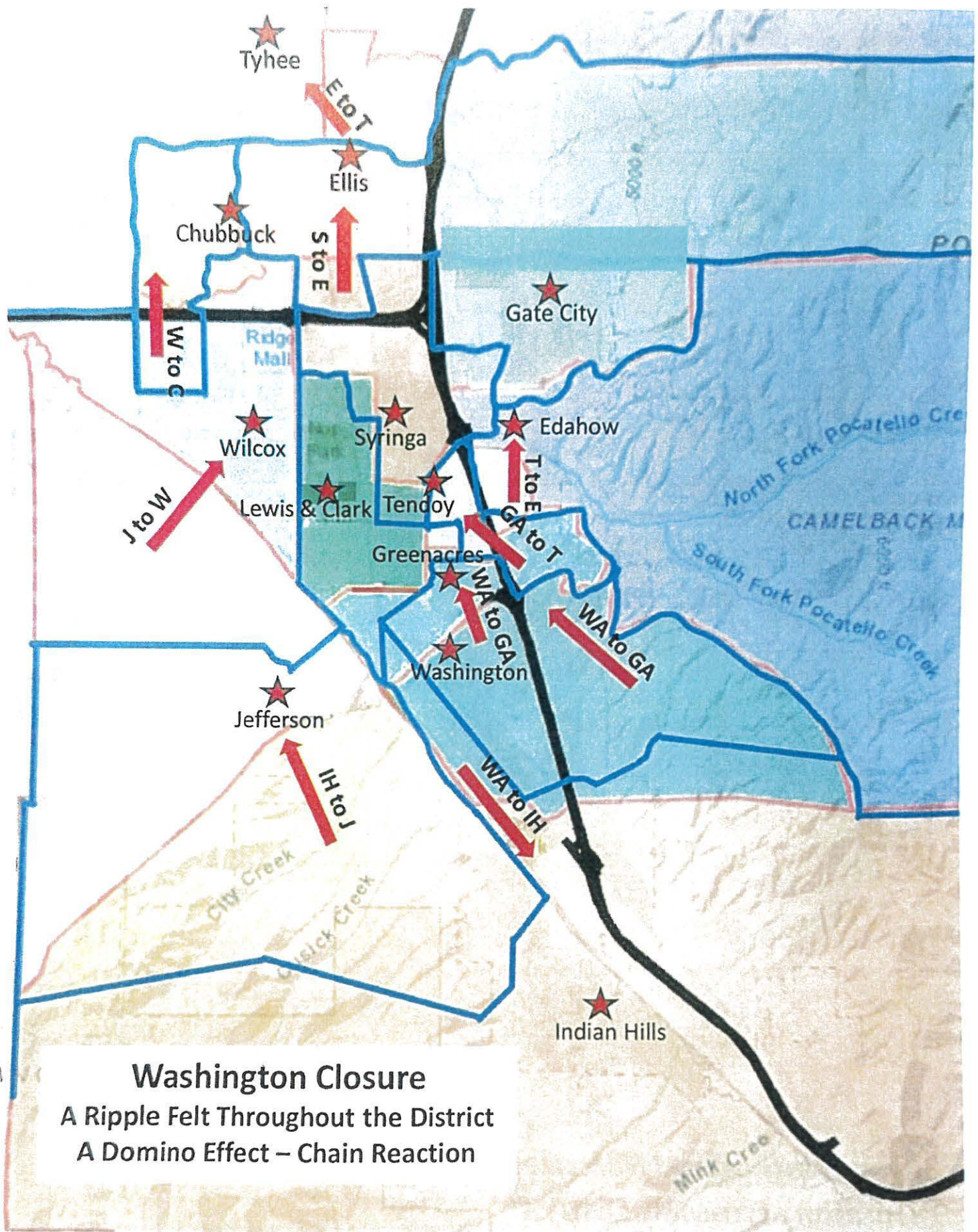
Updated Information and Data

- Washington Advocates- Map Proposal
- Special Board Meeting Recommendation- Tuesday, January 7th at 3:30 p.m.
- Proposal Data and Maps

Enrollment Areas Collaboration and Committee Work

- Committee Discussion, Collaboration and Input- ArcGIS (Geographic Information System)

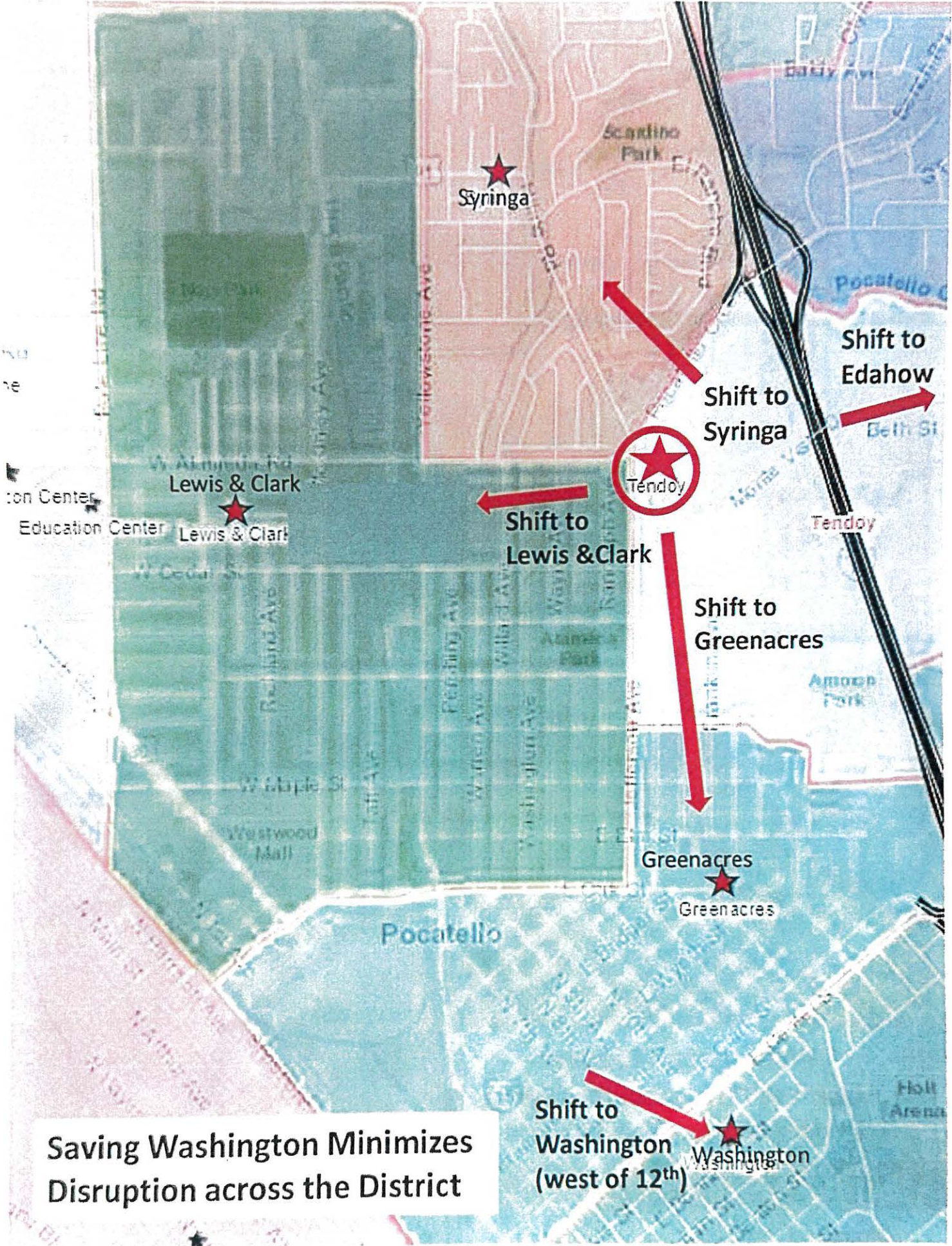
Discussion/Questions/Resources



Washington Closure

A Ripple Felt Throughout the District
 A Domino Effect – Chain Reaction

- Current BLs
- Proposed BLs



Saving Washington Minimizes Disruption across the District

Shift to Washington (west of 12th)

Shift to Greenacres

Shift to Lewis & Clark

Shift to Syringa

Shift to Edahow

Tendoy Elementary / Washington Elementary Bus Information

	Students	Busses	Learners Bussed	Learners Self-Transport/Walk	% Bussed	% Self-Transport/Walk
Tendoy Elementary	219	2	53	166	24%	76%
Washington Elementary	254	3	153	101	60%	40%

*Students are bussed within 1.5 mile radius

To: Board of Trustees
From: Elementary Attendance and Enrollment Area Committee
Date: January 7, 2025
Subject: Recommendation for Proposed Elementary Enrollment Area Changes

The Elementary Attendance and Enrollment Area Committee has developed two additional options for the school board to consider regarding enrollment and attendance area changes at the elementary level. Option two includes closing Tendoy Elementary and changing enrollment areas to equalize building capacity. The third option includes balancing out the enrollment areas without closing a school.

Proposal #1- Close Washington Elementary

- **Overview of Proposed Changes:** In November, the elementary enrollment area committee proposed enrollment changes that included closing Washington Elementary and changing enrollment areas at all elementary schools to equalize capacity in our buildings, balance enrollments, improve access to resources, optimize operational efficiency and plan for future growth. The number of district learners impacted by this proposal would be 1,271.

Option #2- Close Tendoy Elementary

- **Overview of Proposed Changes:** Included in the packet is a map of the proposed enrollment area changes if Tendoy Elementary was closed and enrollment areas were changed to equalize capacity in our buildings. In this proposal, Greenacres and Washington enrollment areas would be adjusted to redistribute the current Tendoy learners. All other elementary changes would be the same as presented with the Washington recommendation.
- **Impact of Proposed Changes:** The proposed enrollment changes are designed to better balance student enrollment numbers, maximize resources including staffing and increase overall building efficiency. This proposal would impact 1,333 learners across the district.

Option #3- Rebalance Enrollment Areas- No School Closure

- **Overview of Proposed Changes:** Also, included in the packet is a map of the proposed enrollment area changes if no elementary schools were closed. Enrollment area changes for this proposal would affect every school except for Tyhee Elementary.
- **Impact of Proposed Changes:** This proposal helps balance the building capacities and free and reduced numbers at some schools, however, overall capacity numbers remain low at several schools. This proposal would impact 655 learners across the district.

Elementary Building Capacity Totals

Washington Closure

School	Student Capacity	Current Enrollment	Building Capacity %	Proposed Enrollment	Proposed Building Capacity %	Current % Free and Reduced	Proposed % Free and Reduced	Teachers	Avg. Class Size
Chubbuck	672	421	62.65%	448	66.67%	39.95%	51.56%	17	26.35
Edahow	420	272	64.76%	265	63.10%	41.95%	43.40%	12	22.08
Ellis	560	354	63.21%	398	71.07%	53.50%	57.29%	17	23.41
Gate City	560	426	76.07%	389	69.46%	21.86%	24.68%	18	21.61
Greenacres	476	287	60.29%	290	60.92%	55.82%	60.69%	13	22.31
Indian Hills	784	498	63.52%	477	60.84%	47.13%	54.09%	21	22.71
Jefferson	560	358	63.93%	412	73.57%	66.85%	60.44%	17	24.24
Lewis and Clark	616	403	65.42%	399	64.77%	69.38%	68.42%	18	22.17
Syringa	588	322	54.76%	409	69.56%	46.46%	49.63%	16	25.56
Tendoy	364	221	60.71%	271	74.45%	66.06%	43.54%	12	22.58
Tyhee	868	510	58.76%	528	60.83%	43.88%	39.20%	21	25.14
Washington	476	257	53.99%	0	0.00%	64.82%	0.00%	0	#DIV/0!
Wilcox	784	467	59.57%	518	66.07%	62.93%	59.27%	22	23.55

7728

4796

204

(-10 FTE)

Tendoy Closure

School	Student Capacity	Current Enrollment	Building Capacity %	Proposed Enrollment	Proposed Building Capacity %	Current % Free and Reduced	Proposed % Free and Reduced	Teachers	Avg. Class Size
Chubbuck	672	421	62.65%	448	66.67%	39.95%	51.56%	17	26.35
Edahow	420	272	64.76%	265	63.10%	41.95%	43.40%	12	22.08
Ellis	560	354	63.21%	398	71.07%	53.50%	57.29%	17	23.41
Gate City	560	426	76.07%	389	69.46%	21.86%	24.68%	18	21.61
Greenacres	476	287	60.29%	273	57.35%	55.82%	63.00%	13	21.00
Indian Hills	784	498	63.52%	477	60.84%	47.13%	54.09%	21	22.71
Jefferson	560	358	63.93%	412	73.57%	66.85%	60.44%	17	24.24
Lewis and Clark	616	403	65.42%	399	64.77%	69.38%	68.42%	18	22.17
Syringa	588	322	54.76%	409	69.56%	46.46%	49.63%	16	25.56
Tendoy	364	221	60.71%	0	0.00%	66.06%	0.00%	0	#DIV/0!
Tyhee	868	510	58.76%	528	60.83%	43.88%	39.20%	21	25.14
Washington	476	257	53.99%	288	60.50%	64.82%	42.36%	12	24.00
Wilcox	784	467	59.57%	518	66.07%	62.93%	59.27%	22	23.55

7728

4796

204

(-10 FTE)

Balanced Enrollment Areas- No Closure

School	Student Capacity	Current Enrollment	Building Capacity %	Proposed Enrollment	Proposed Building Capacity %	Current % Free and Reduced	Proposed % Free and Reduced	Teachers	Avg. Class Size
Chubbuck	672	421	62.65%	452	67.26%	39.95%	51.99%	17	26.59
Edahow	420	272	64.76%	265	63.10%	41.95%	43.40%	12	22.08
Ellis	560	354	63.21%	364	65.00%	53.50%	56.04%	17	21.41
Gate City	560	426	76.07%	389	69.46%	21.86%	24.68%	18	21.61
Greenacres	476	287	60.29%	272	57.14%	55.82%	47.06%	13	20.92
Indian Hills	784	498	63.52%	437	55.74%	47.13%	43.02%	21	20.81
Jefferson	560	358	63.93%	396	70.71%	66.85%	66.41.%	17	23.29
Lewis and Clark	616	403	65.42%	369	59.90%	69.38%	69.92%	18	20.50
Syringa	588	322	54.76%	371	63.10%	46.46%	50.40%	14	26.50
Tendoy	364	221	60.71%	264	72.53%	66.06%	57.95%	12	22.00
Tyhee	868	510	58.76%	520	59.91%	43.88%	40.00%	21	24.76
Washington	476	257	53.99%	272	57.14%	64.82%	63.60%	12	22.67
Wilcox	784	467	59.57%	433	55.23%	62.93%	58.43%	22	19.68

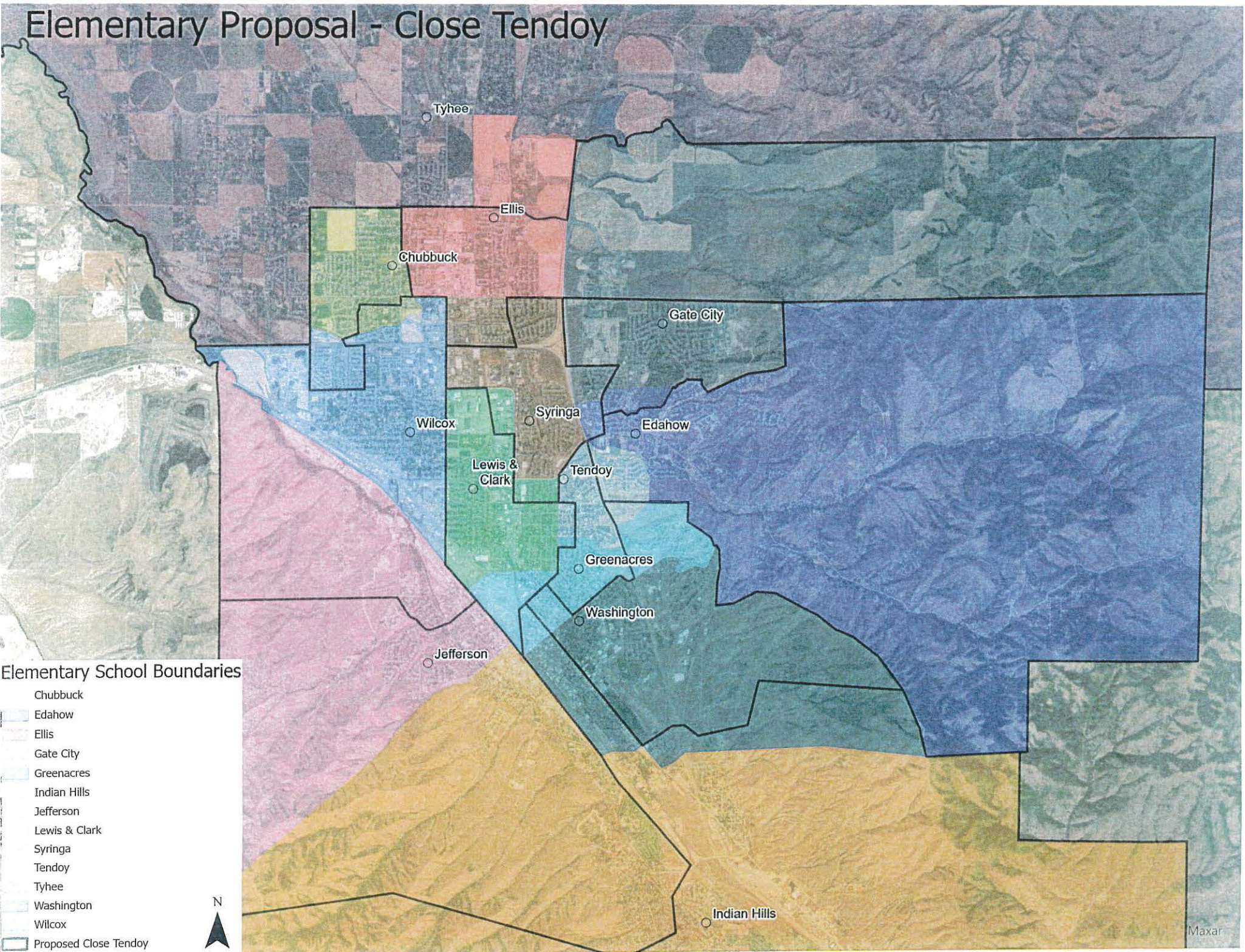
7728 4796

214

(No FTE Reductions)

*capacity based on 28 students/classroom

Elementary Proposal - Close Tendoy

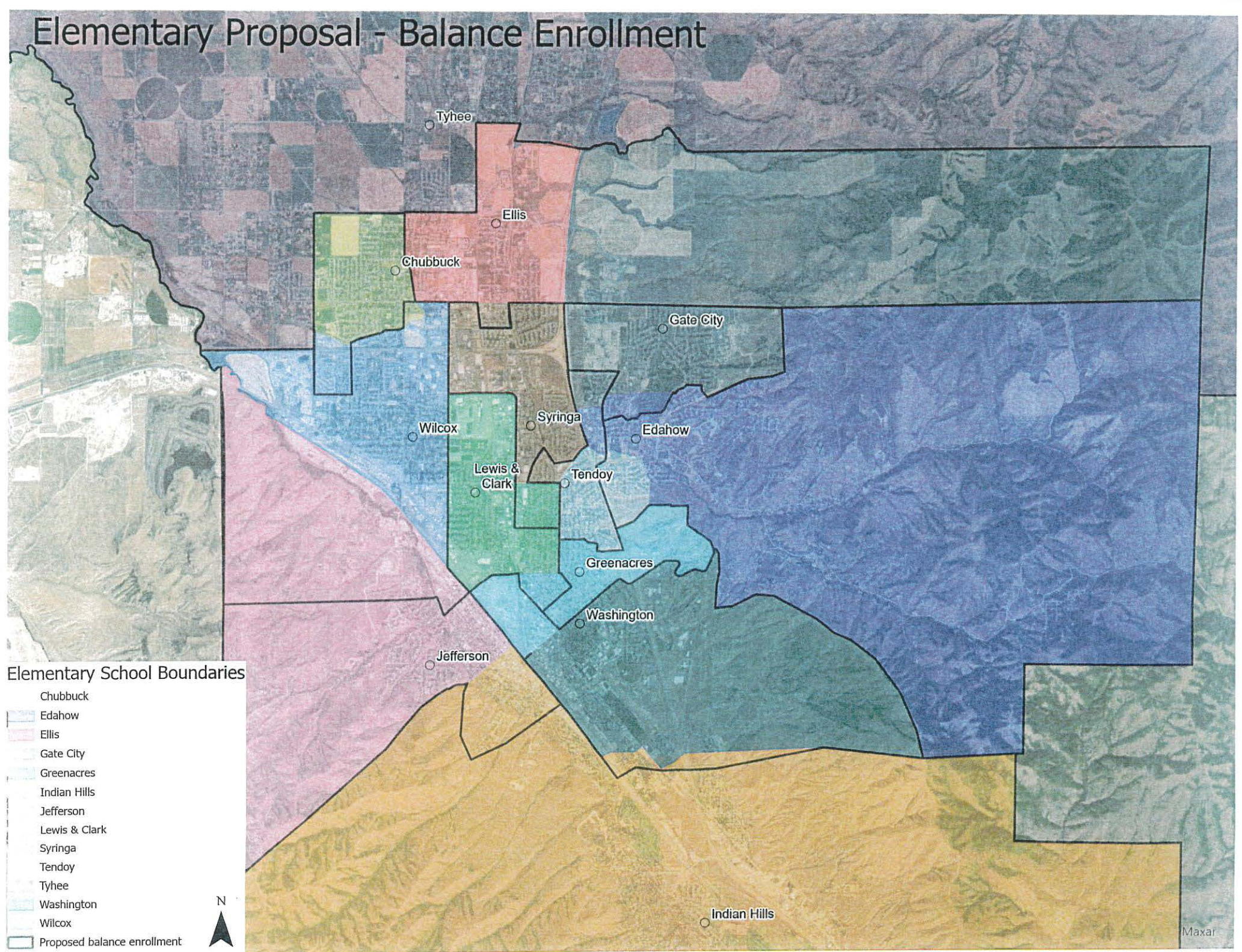


Elementary School Boundaries

- Chubbuck
- Edahow
- Ellis
- Gate City
- Greenacres
- Indian Hills
- Jefferson
- Lewis & Clark
- Syringa
- Tendoy
- Tyhee
- Washington
- Wilcox
- Proposed Close Tendoy



Elementary Proposal - Balance Enrollment



Tyhee

Ellis

Chubbuck

Gate City

Wilcox

Syringa

Edahow

Lewis & Clark

Tendoy

Greenacres

Washington

Jefferson

Indian Hills

Elementary School Boundaries

- Chubbuck
- Edahow
- Ellis
- Gate City
- Greenacres
- Indian Hills
- Jefferson
- Lewis & Clark
- Syringa
- Tendoy
- Tyhee
- Washington
- Wilcox
- Proposed balance enrollment

