

Regular Meeting
KILLINGLY BOARD OF EDUCATION
Wednesday, January 8, 2025
7:00 PM
Central Office 79 Westfield Ave., Killingly CT 06239
Conference Room A

AGENDA

- 1. CALL TO ORDER**
- 2. ROLL CALL**
- 3. BOARD SHOUT-OUTS**
- 4. REPORT BY STUDENT BOARD MEMBERS**
- 5. PUBLIC COMMENT** - *Members of the public are encouraged to share their thoughts with the Board of Education and are invited to do so during this segment of the meeting. 30 minutes will be allotted for public comment per meeting, limited to no more than 3 minutes, maximum per person. People wishing to speak must sign up prior to the start of the meeting. When appropriate to do so, members of the Board and the administration may respond to comments. However, in consideration of those in attendance and in an effort to proceed in a timely manner, follow-up discussion may need to take place outside of the meeting setting.*
- 6. TOWN COUNCIL LIAISON REPORT**
- 7. BOARD CHAIRPERSON, COMMITTEE & LIAISON UPDATES**
 - A. Curriculum Committee
 - B. Facilities Committee
 - C. Fiscal Committee
 - D. Personnel Committee
 - E. Policy Committee
 - F. AdHoc Committee to Discuss District-wide Bullying
 - G. AdHoc Committee to Discuss School Mascot
- 8. REVIEW AND POSSIBLE ACTION REGARDING FFA FIELD TRIP REQUEST TO IRELAND, SPRING 2026**
- 9. DISCUSSION AND POSSIBLE ACTION REGARDING ELECTION OF VICE CHAIR**
- 10. SUPERINTENDENT'S UPDATE**
 - A. Discussion and Possible Action for Approval of 2025-2026 Calendar
 - B. Attendance Update
 - C. Update on KPS Therapeutic Academy at Westfield
 - D. Discussion and Possible Action on Adoption of CKLA (ELA Program), Grades 5-8

- E. Discussion and Possible Action on Adoption of AP Statistics & AP Calculus to the High School Program of Studies

11. CONSENT AGENDA

- A. 12-11-24 BoE Meeting Minutes
- B. Student Enrollment
- C. Employee of the Month Nominee

12. ADJOURNMENT

KILLINGLY PUBLIC SCHOOLS FIELD TRIP REQUEST

REV. 7/08

Trip Number: 3 Billing Code: _____
Bldg Use Sequence (e.g. 010-1-001)

SCHOOL: KHS GRADE/CLASS/CLUB: FFA DATE: 12/11/24

TEACHER/FIELD TRIP LEADER: CALVIN BRODERSEN

DATE OF TRIP: 4/16/26 - 4/19/26 NUMBER OF STUDENTS: up to 32

TBD by dist. calendar NUMBER OF CHAPERONES: up to 5 6:1 ratio

DEPARTURE TIME: _____ RETURN TIME: _____

On a school day: 8:30 AM or later unless approved in writing by the Transportation Supervisor
2 PM or earlier unless approved in writing by the Transportation Supervisor

DESTINATION/DIRECTIONS (be specific): Ireland (Dublin, Kilkenny, Galway.)

SEE ATTACHED

Yes ___ No ___ Transportation availability confirmed with Transportation Supervisor.

Objectives of Trip (relation to curriculum, etc.): SEE ATTACHED

Transportation Desired:

Names of Chaperones:

____ School Bus CALVIN BRODERSEN

____ Mini Bus REBECCA BRODERSEN

☒ Other (specify) ROBERT POLSELLI

____ Van _____

Special Equipment Required:

Substitutes Req. _____
(Number)

____ Car Seats _____
(Number)

Aide(s) Required _____
(Number)

____ Handicap Equipped

Nurse Required _____
(Number)

Specify: _____

NOTE: Requests to be submitted with all entries complete at least two weeks prior to the trip. Approval will be given only for trips where careful and early planning insures that worthwhile educational outcomes will result. PLEASE NOTE: Head teacher (school) is responsible for any parking fees.

Calvin Brodersen
Teacher

Karen Legace
Principal/Program Administrator

Superintendent's Office

Transportation Supervisor

Field Trip:	Killingly FFA Goes to Ireland! (Through Education First)
Location:	Ireland (Dublin, Kilkenny, Galway)
Date of trip:	April 10th-19th, 2026 (Dates TBD; 10 days)
Chaperones:	Calvin Brodersen (KHS Agriculture Teacher), Robert Polselli, Rebecca Brodersen (additional 2 other chaperones TBD)
Who:	Up to 32 students; 5 chaperones
Cost:	Students: \$4119 (all inclusive) / Adults \$5239 (1 free chaperone per 6 students)
Overview:	Students will have the opportunity to get their hands dirty (literally) as they experience the farm-to-table journey—an important part of life in Ireland—by visiting a variety of local farms around the country. They will learn about organic and sustainable farming practices, the impact of climate change on traditional food production, and how each agricultural product requires specialized care. They will get to know Irish farmers and fishermen, learn about the business of farming, and engage in hands-on projects at dairy, potato, shellfish, or sheep farms. They will also spend time on the Emerald Isle by exploring the vibrant, culture-packed, and welcoming streets of Dublin, Kilkenny, and Galway, and admire the Atlantic Ocean from atop the Cliffs of Moher.
Standards:	CS.01.01 Research, examine and discuss issues and trends that impact AFNR (Agriculture, Food and Natural Resources) on local, state, national and global levels.
	CS.06.02 Analyze and explain the connection and relationships between different AFNR systems on a national and global level
	FPP.01.02 Apply food safety and sanitation procedures in the handling and processing of food products to ensure food quality
	FPP.04 Explain the scope of the food industry and the historical and current developments of food products and processing on local and global levels
	PS.02.01.02.b. Identify and describe important plants to agricultural and ornamental plant systems by common names
	PS.03.04. Apply principles and practices of sustainable agriculture to plant production.
	PS.03.04.02.a. Summarize national/international and local/regional food production systems
	PS.03.04.03.a. Identify and summarize impacts of environmental conditions on plants.
	PS.03.05.01.a. Identify and summarize harvesting methods and equipment
	PS.04.01 Apply/understand principles of design in plant systems to enhance an environment (e.g. floral, forest, landscape, farm)
	CRP.04.03.01.b. Apply active listening strategies (e.g., be attentive, observe non-verbal cues, ask clarifying questions, etc.).
	CRP.09.01.02.c. Model characteristics and actions of ethical and effective leaders in workplace and community situations (e.g., integrity, self-awareness, etc.).
	CRP.09.03.02.c. Model respectful and purposeful behaviors that contribute to positive morale and culture in the workplace and community (e.g., effectively communicating, recognizing accomplishments of others, etc.).

Killingly FFA Goes to Ireland!

April 2026

Why Education First?

They are a well known international travel group that thousands of schools use to plan international experiences. They are reliable, experienced, provide the lowest priced travel plans and provide 24 hour assistance.

What we will see and do:

Sightseeing tours of Dublin, Kilkenny Region and Galway. EPIC Museum of Irish Emigration, Irish National Stud and Gardens, Irish Racehorse Experience, Dairy Farm experiential tour, Local Kilkenny farm work and tour, Cliffs of Moher, Shellfish Farm Tour, Sheep Farm tour and MORE!

Fundraising!

We will begin a series of fundraising endeavors to help lower the cost of the trip. The more your student sells, the more they make!

What if I register, and have to cancel?

Included in the price of the trip is the \$190 global travel protection insurance. If you need to cancel your participation, you can do so up until 75 days before departure. You will receive your money back minus the \$95 deposit and the \$190 global travel protection. For \$300 more, you may opt for the Global Travel Protection Plus plan, and can cancel up to 24 hours before departure.

What's Included:

Round Trip Airfare	Educational itinerary	Tour donation page
Safe, quality hotel rooms	Guided tours and activities	Travel backpack
24/7 bilingual tour guide	Breakfast and dinner daily	Global travel protection plan
On-tour transportation	24/7 on-tour support	

What's NOT included:

Passport and Visa fees	Airport baggage fees	Tips- tour guide/bus driver
Lunches and snacks	Spending money	

Cost of the trip:

Required Deposit:	\$95.00
Monthly:	\$180/month (starting November 2024)
In-Full:	\$4,419

TO ENROLL, go to:
Change this link!

<https://www.eftours.com/tour-website/2779154FE>

AUGUST 2025 (2)						
SU	MO	TU	WE	TH	FR	SA
					1	2
3	4	5	6	7	8	9
10	11	12	13	14	15	16
17	18	19	20	21	22	23
24	25	26	27	[28	29	30
31						

SEPTEMBER 2025(21)						
SU	MO	TU	WE	TH	FR	SA
	*1	2	3	4	5	6
7	8	9	10	11	12	13
14	15	16	17	18	19	20
21	22	23	24	25	26	27
28	29	30				

OCTOBER 2025 (22)						
SU	MO	TU	WE	TH	FR	SA
			1	2	3	4
5	6	7	8	9	10	11
12	*13	14	15	16	17	18
19	20	21	22	23	24	25
26	27	28	29	30	31	

NOVEMBER 2025 (16)						
SU	MO	TU	WE	TH	FR	SA
		3				1
2	3	4	5	6	7	8
9	10	*11	12	13	14	15
16	17	18	19	20	21	22
23	24	25	26	27	28	29
30						

DECEMBER 2025 (17)						
SU	MO	TU	WE	TH	FR	SA
	1	2	3	4	5	6
7	8	9	10	11	12	13
14	15	16	17	18	19	20
21	22	23	*24	*25	26	27
28	29	30	*31			

JANUARY 2026 (18)						
SU	MO	TU	WE	TH	FR	SA
				*1	2	3
4	5	6	7	8	9	10
11	12	13	14	15	16	17
18	*19	20	21	22	23	24
25	26	27	28	29	30	31

FEBRUARY 2026 (18)						
SU	MO	TU	WE	TH	FR	SA
1	2	3	4	5	6	7
8	9	10	11	12	13	14
15	*16	*17	18	19	20	21
22	23	24	25	26	27	28

MARCH 2026 (21)						
SU	MO	TU	WE	TH	FR	SA
1	2	3	4	5	6	7
8	9	10	11	12	13	14
15	16	17	18	19	20	21
22	23	24	25	26	27	28
29	30	31				

APRIL 2026 (16)						
SU	MO	TU	WE	TH	FR	SA
			1	2	*3	4
5	6	7	8	9	10	11
12	13	14	15	16	17	18
19	20	21	22	23	24	25
26	27	28	29	30		

MAY 2026 (20)						
SU	MO	TU	WE	TH	FR	SA
					1	2
3	4	5	6	7	8	9
10	11	12	13	14	15	16
17	18	19	20	21	22	23
24/ 31	*25	26	27	28	29	30

2025-26 Killingly Public Schools **DRAFT** Calendar-182 Student days, 188 Teacher days. BOE approved

New Teacher Orientation: August 19, 20, & 21 **Convocation:** August 25
☒ **Professional Development (6):** No school for students August 25, 26, 27 November 4, January 20 & March 27
 August 28-First Day of School for Grades PreK - 9 Only. August 29-First Day of School for Grades 10, 11, 12
 Anticipated Last Day of School: June 15, 2026 KHS Graduation: June 12, 2026
 ▲ **Early Release Days: (8)** Sept. 26, Oct. 24, Dec. 5, Jan. 9, Feb. 20, March 13, April 10, May 15
 / **Half Days: (3)** November 26, December 23, & June 15

Schools Closed (*District Closed)
 Independence Day- *July 4 Labor Day- *Sept. 1 Columbus Day-*Oct. 13 Veteran's Day- *Nov. 11
 Thanksgiving Break-Nov. *27 & *28 Holiday Break-Dec. *24 *25, 26, 27 28, 29, 30 *31 and January *1, 2
 Martin Luther King Jr. Day-*Jan. 19 Winter Break- Feb.*16 & *17 Good Friday-*April 3
 Spring Break- April 13, 14, 15, 16, 17 Memorial Day-*May 25

Open Houses
 Goodyear Early Childhood Center: August 26, 5:30-6:30 p.m.
 Central School: **Kindergarten**-August 27, 5:00-6:30 p.m.
 Central School: **Grade 1**- September 11, 5:00-6:30 p.m.
 Memorial School: September 3, 5:30-7:00 p.m.
 Intermediate School: September 10, 5:00-7:00 p.m.
 High School: August 27, 6:00-7:00 Freshmen Dinner, 5:30-6:00 p.m.

Progress Reports	
Prek- 4	Grades 5-12
October 10	September 30
January 16	December 01
April 24	February 26
	May 11
Grading Period Ends	
Prek- 4	Grades 5-12
November 14	November 5
March 5	January 23
End of School	April 1
	Last day of school

Parent/Teacher Conferences
Goodyear Early Childhood Center: Nov. 13, 11:30 a.m.-7:00 p.m. & March 12, 11:30-7:00 (**1/2 day for GECC students**)
Central School: November 24, 5:00-7:00 p.m. November 25, 1:45-3:45 & 5:00-7:00 p.m. (**1/2 day for KCS students**)
 March 25, 5:00-7:00 p.m. March 26, 1:45-3:45 & 5:00-7:00 p.m. (**1/2 day for KCS students**)
Memorial School: November 18, 5:00-7:00 p.m. November 20, 1:45-3:45 & 5:00-7:00 pm (**1/2 day for KMS students**)
 March 17, 5:00-7:00 p.m. March 19, 1:45-3:45 & 5:00-7:00 p.m. (**1/2 day for KMS students**)
Intermediate School: November 5, 1:00-3:00 p.m. & 5:00-7:00 p.m. (**1/2 day for KIS students**)
 November 6, 1:00-3:00 p.m. & 5:00-7:00 p.m. (**1/2 day for KIS students**)
 Student Led Conferences - May 28, 7:30 a.m.-2:30 p.m. & 5:00-7:00 p.m.
High School: October 20, 1:00-3:00 p.m. & 5:00-7:00 p.m. (**1/2 day for KHS students**)
 October 21, 1:00-3:00 p.m. & 5:00-7:00 p.m. (**1/2 day for KHS students**)
 March 9, 1:00-3:00 p.m. & 5:00-7:00 p.m. (**1/2 day for KHS students**)
 February 24 (snow date Feb. 26) Career Pathway/Academic Showcase 5:00-7:00 p.m

Board of Education Meetings
 2nd & 4th Wednesday of the Month (1 meeting in Nov. & Dec.)
 September 10 & 24 February 11 & 25
 October 8 & 22 March 11 & 25
 November 12 April 8 & 22
 December 10 May 13 & 27
 January 14 & 28 June 10 & 24

THE KILLINGLY THERAPEUTIC ACADEMY

AT WESTFIELD

K Killingly Public
Schools



The Killingly Therapeutic Academy is a partnership between Killingly Public Schools and Effective School Solutions that provides therapeutic services, academic instruction, and support for students in grades 5–12 who face challenges thriving in a traditional school environment. Our goal is to create a safe academic setting that fosters social, emotional, behavioral, and career-focused well-being.

PROGRAM HIGHLIGHTS

- Licensed Mental Health Clinicians & Behavioral Specialist
- Skilled Teachers, Paraprofessionals, & Mental Health Technicians
- Trauma-Attuned Behavioral Service Protocols & Tools
- Strength Centered Methods
- Individual Intervention, Treatment, & Reinforcement Plans
- Therapeutic classroom settings



DISCOVER **ADVANTAGES** FOR YOUR STUDENT THROUGH OUR **SPECIALIZED PROGRAMS**

- Research-based strategies to support high-need students
- Academic programs meeting diploma standards
- A consistent classroom structure with clear rewards and consequences
- Personalized instruction and accommodations
- Data-informed approaches to behavioral support
- Proactive crisis management and urgent intervention strategies
- Thorough program supervision
- Regular cross-disciplinary team meetings to discuss student progress
- Support services for families & open, regular communication
- Care coordination with outside agencies & providers

OUR SPACES



Students thrive when they feel safe, respected, connected to caring adults, and engaged in challenges that build real-world skills for a productive future.

TRANSITION PROGRAM AT KILLINGLY THERAPEUTIC ACADEMY

Paying job with mentoring | Money management | Career exploration | Multiple work sites | Life & soft skills | Improved activities of daily living

The Transition Program equips students with disabilities with the skills, resources, and experiences needed to successfully transition from school to independent living, further education, or employment. Eligible students can attend after they have completed their high school credits through a PPT recommendation. Students can stay through their 22nd birthday with continued eligibility.

CONTACT US

Elise Geary
Director of Pupil Services
egeary@killinglyschools.org
(860) 779-6744

79 Westfield Ave, Danielson, CT 06239
killinglyschools.org

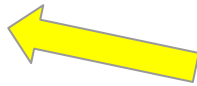
Potential Adoption of New KIS ELA Curriculum

*Extending CKLA
for 5th-8th Grade*



AMPLIFY

CKLA
K-5



ELA
6-8

It's to Make a Change

We are compelled by what's right, not solely legislation

Current Data

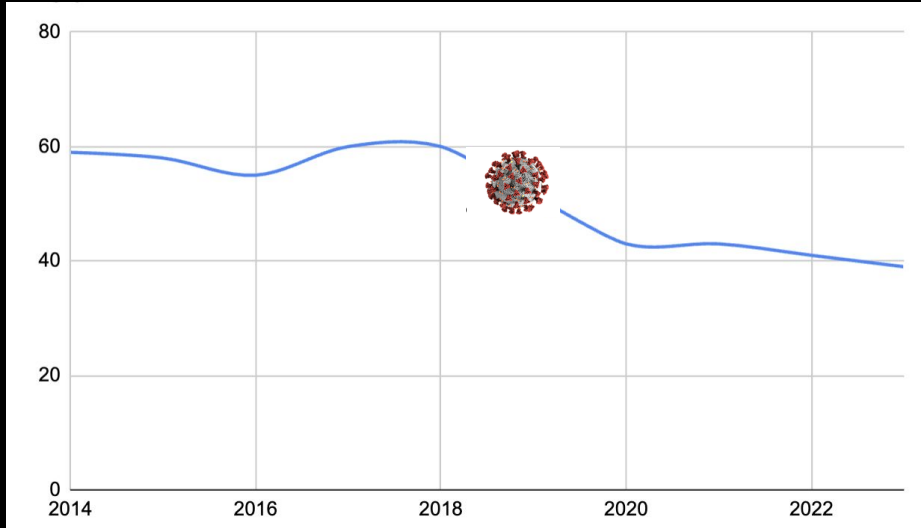
Component Integration

Highly rated

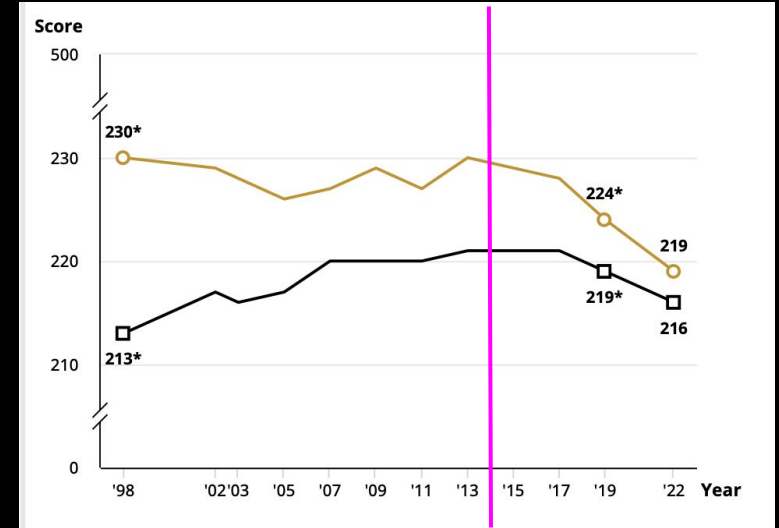
Already Vetted

Data

District Smarter Balanced Assessment

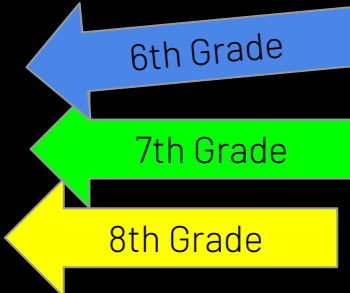


NAEP Connecticut & Nation



Spring of 23' to Spring of 24'

2021-22	2022-23	2023-24
35%	32%	39%
47%	29%	44%
36%	53%	30%
49%	43%	51%
37%	49%	30%
54%	43%	41%
43%	41%	39%

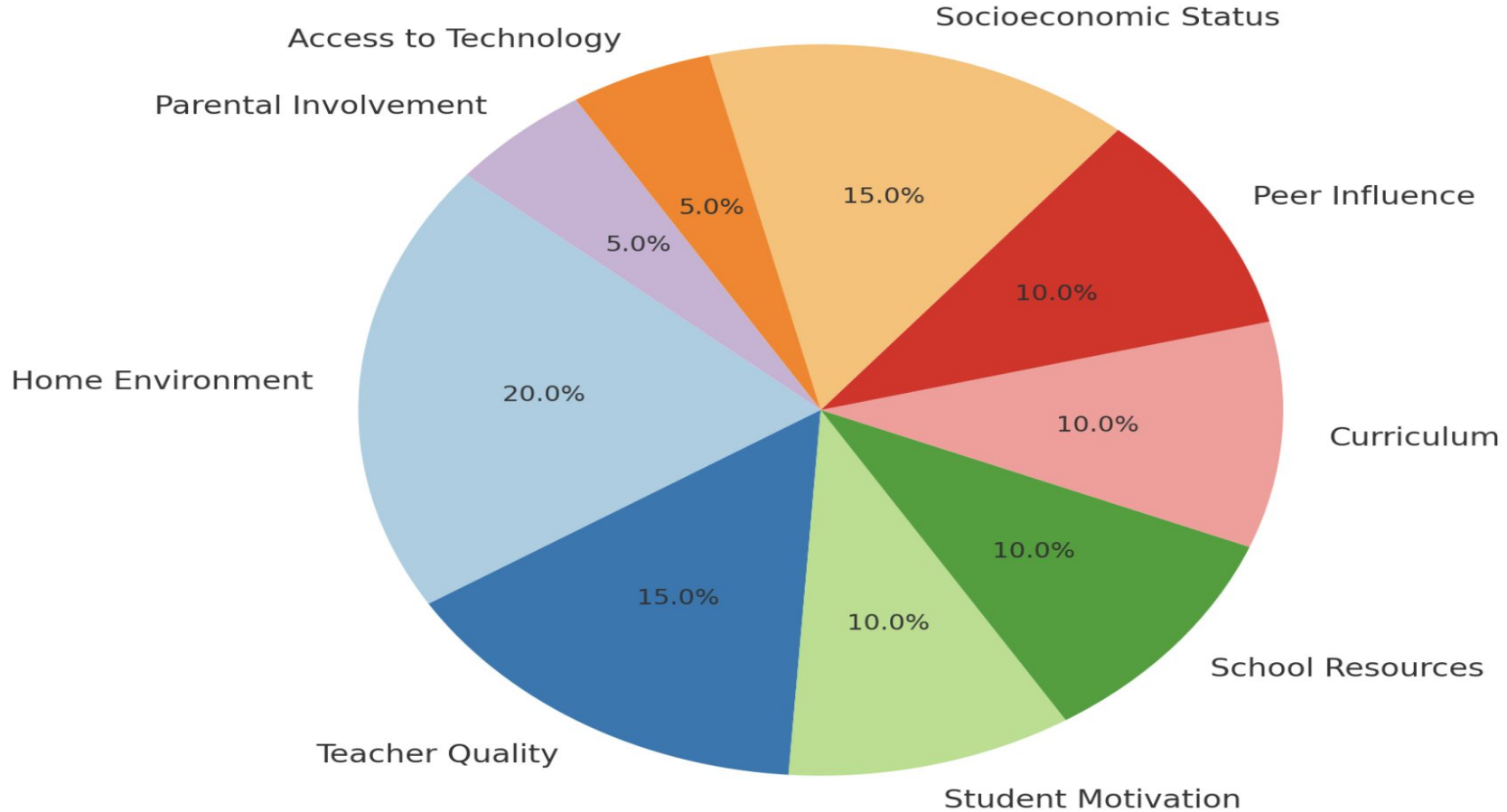


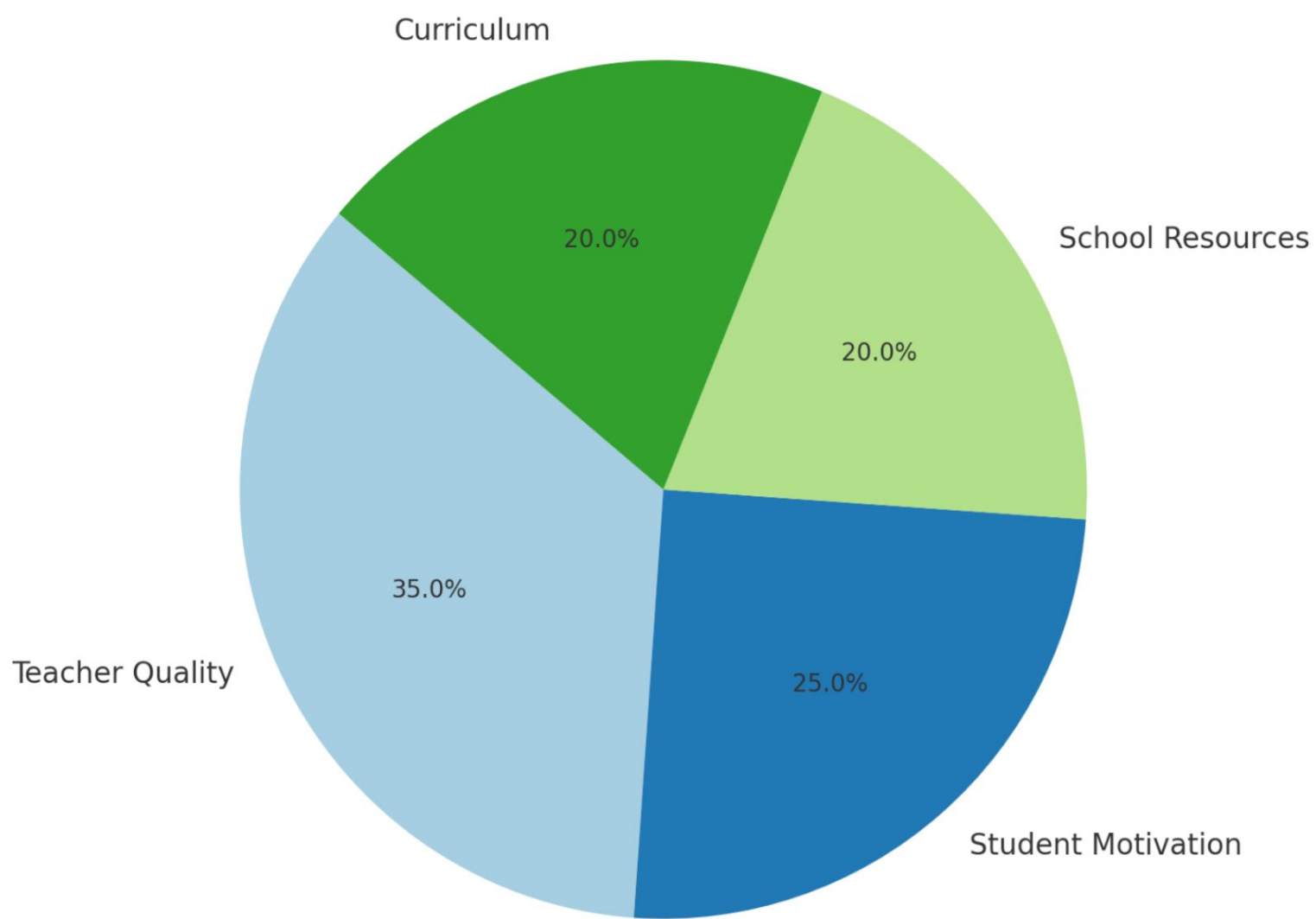
6th Grade

7th Grade

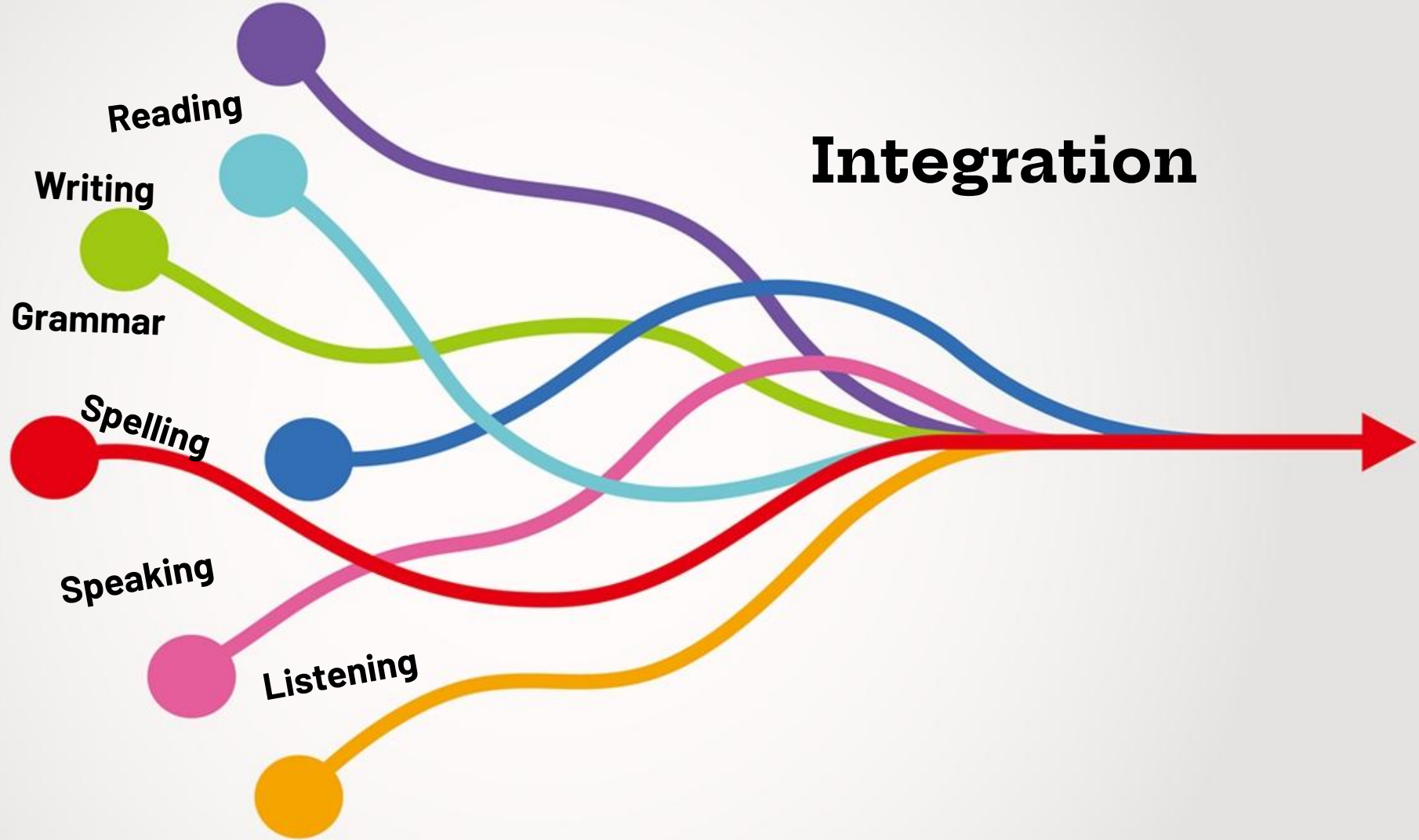
8th Grade

Factors Influencing a Child's Academic Performance





Component Integration



The topics that were chosen for the reading passages are of high interest to most students. I especially like the more structured approach to grammar and spelling. I feel like this curriculum has a deliberate approach to teaching spelling patterns that is very beneficial.

Also, I have the sticky notes from the first couple of units pulled out of my teacher books. What would you like me to do with them?

Thanks,
Jean

Jean Carlson
3rd Grade

Re: BOE Meeting Wednesday



Yesterday at 7:38 AM



✕ Nicole Gaulin <ngaulin@killinglyschools.org>

To: ✕ Matthew Sierakowski

Good morning,

The new CKLA program has been a wonderful addition to our curriculum. The topics are fun and interesting for students and keeps them engaged. The best part about CKLA is the spelling and grammar portion.

Thank you,
Nikki



○ Heidi Hand <hhand@killinglyschools.org>

To: ⓘ Matthew Sierakowski

Yesterday at 11:30 AM

The program provides all the elements needed to provide literacy instruction to my class. There is no guesswork or scrambling to find supplemental materials that may or may not work and may cost me money. Students are engaged in learning, and I believe that I will see significant gains in their reading and writing skills.

Heidi Hand
Third Grade Teacher
Killingly Memorial School

Why CKLA?

Vetted by KPS and by
National Curriculum
Reviews



Materials Matter

We provide free reports that help you evaluate instructional materials because high-quality content matters to teachers, to kids, and to our collective future.

6th Grade

[View Full Report](#) →

GATEWAY 1

Text Quality

36/36



GATEWAY 2

Building Knowledge

32/32



ALIGNMENT (GATEWAY 1 & 2) ⓘ

Meets Expectations

7th Grade

[View Full Report](#) →

GATEWAY 1

Text Quality

36/36



GATEWAY 2

Building Knowledge

32/32



ALIGNMENT (GATEWAY 1 & 2) ⓘ

Meets Expectations

8th Grade

[View Full Report](#) →

GATEWAY 1

Text Quality

36/36



GATEWAY 2

Building Knowledge

32/32



ALIGNMENT (GATEWAY 1 & 2) ⓘ

Meets Expectations

GATEWAY 3

Usability

34/34



USABILITY (GATEWAY 3) ⓘ

Meets Expectations

GATEWAY 3

Usability

34/34



USABILITY (GATEWAY 3) ⓘ

Meets Expectations

GATEWAY 3

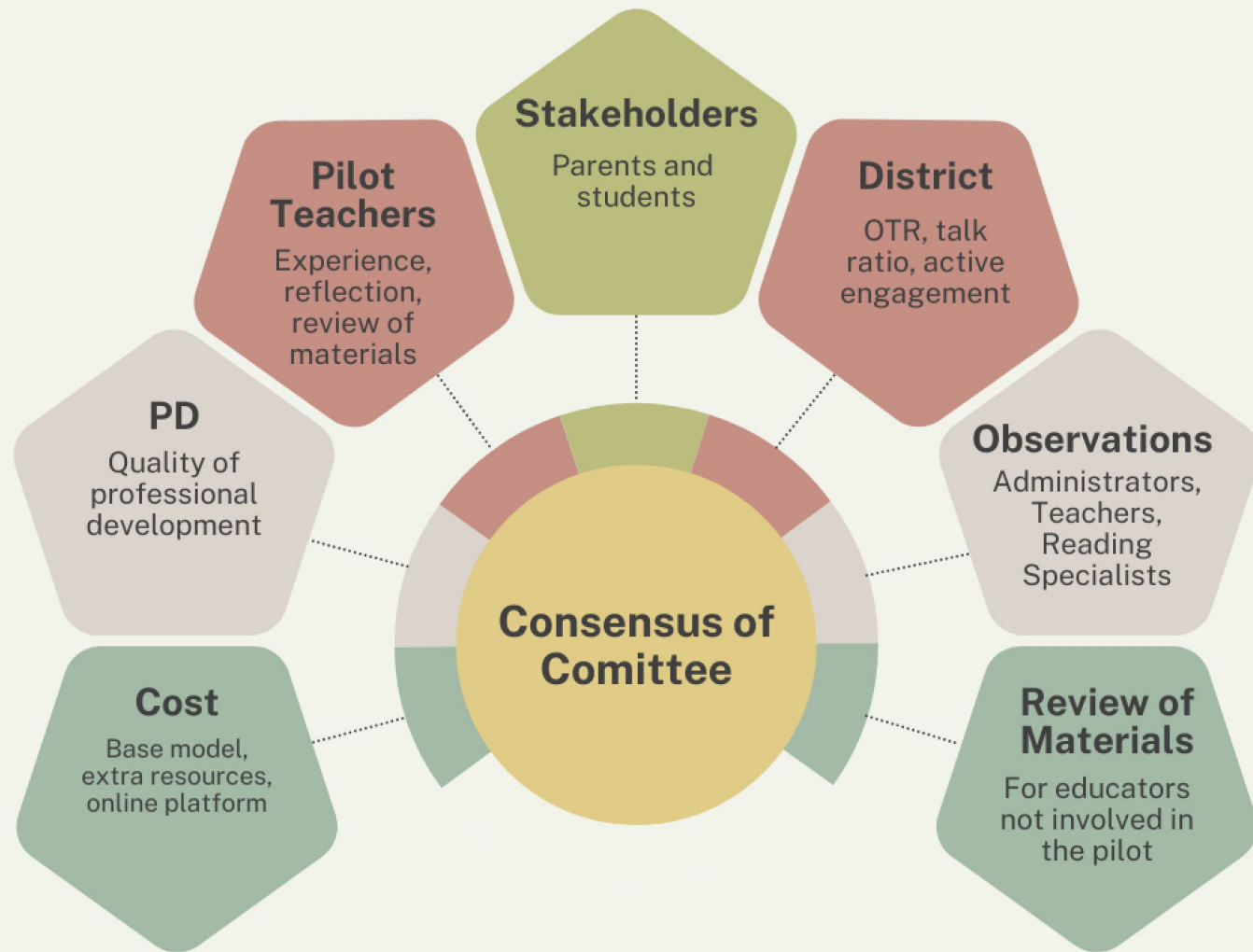
Usability

34/34



USABILITY (GATEWAY 3) ⓘ

Meets Expectations



So what's it really like?

The Titanic Collection

LESSONS

SUB-UNIT 2 • 4 LESSONS

SUB-UNIT 3 • 4 LESSONS

SUB-UNIT 4 • 4 LESSONS



are primary source documents and take on the role of a passenger from the *Titanic* and write narrative accounts from the point of view of the passengers.

The numbers

Consumable

Digital

“Blended License”

“Can we pull apart the
license for each
child?”

Do the teachers
really want the
consumables?

PD is expensive.
Let's run our own
PD.

Grade	Before	After	Consumable Savings
5	\$7,220	\$456	\$6,764
6	\$9,450	\$5,950	\$3,500
7	\$10,865	\$6,825	\$4,040
8	\$10,600	\$6,650	\$3,950
PD ELA	\$8,900	\$0	\$8,900
PD 5th Grade	\$7,150	\$0	\$7,150
Total Savings Per Year			\$35,304

Implementation Costs - CKLA Grades 5-8

Grade 5:

- 1 year = \$11,702
- 3 years = \$18,636
 - \$6,212 per year
- 5 years = \$23,116
 - \$4,623.20 per year

Grades 6-8:

- 1 year = \$24,813
- 3 years = \$41,148
 - \$13,716 per year
- 5 years = \$55,638
 - \$11,127.60 per year

I



Killingly High
School

Proposed new Math course offerings:



CollegeBoard

AP[®] Precalculus



CollegeBoard

AP[®] Statistics

This would increase AP offerings from 2 to 4 courses!

AP[®] Precalculus

Course Goal: Make the benefits of AP coursework broadly accessible, particularly for students who've never taken an AP course.

Course Content:
(1 credit)

Unit	Exam Weighting (Multiple-Choice Section)
Unit 1: Polynomial and Rational Functions	30%–40%
Unit 2: Exponential and Logarithmic Functions	27%–40%
Unit 3: Trigonometric and Polar Functions	30%–35%
Unit 4: Functions Involving Parameters, Vectors, and Matrices	Not assessed on the AP Exam

Who would take this course?

- Students on their way to AP Calc (this would give them a 3rd AP Math course)
- Students who might not be ready for the rigor of Calculus in high school
- Students not headed for STEM majors in college.

Proposed Course Progression				
8	9	10	11	12
Algebra 1	H Algebra 2	H Geometry	AP Pre-Calc	AP Calc(AB)
	H Algebra 2	AP Pre-Calc	AP Calc(AB)	AP Calc(BC)
	H Geometry	H Geometry		
Pre-Algebra	Algebra 1	Geometry	Algebra 2	AP Pre-Calc
				Trigonometry

Impact on other offerings & staffing: None- this will replace Honors Precalculus

Costs:

- Materials & PD Workshops= **Free** online
- Textbook = No purchase needed; the current textbook is on approved list
- *Recommended* **AP Summer Institute** = \$700 per teacher* for 30 hour PD (scholarships available)
- Recommended **AP Mentoring** during 2025-26 = \$300 per teacher*

*One or Two teachers

AP[®] Statistics

Course Description: The course introduces students to the major concepts and tools for collecting, analyzing, and drawing conclusions from data.

Students use technology, investigations, problem solving, and writing as they build conceptual understanding.
(1 credit)

Exam Weighting for the Multiple-Choice Section of the AP Exam

Units	Exam Weighting
Unit 1: Exploring One-Variable Data	15–23%
Unit 2: Exploring Two-Variable Data	5–7%
Unit 3: Collecting Data	12–15%
Unit 4: Probability, Random Variables, and Probability Distributions	10–20%
Unit 5: Sampling Distributions	7–12%
Unit 6: Inference for Categorical Data: Proportions	12–15%
Unit 7: Inference for Quantitative Data: Means	10–18%
Unit 8: Inference for Categorical Data: Chi-Square	2–5%
Unit 9: Inference for Quantitative Data: Slopes	2–5%

Who would take this course?

- Students already taking AP Calc
- Students who might not be ready for the rigor of Calculus in high school
- Students not headed for STEM majors in college- This is very relevant for students going into the social sciences!

Course Progression				
8	9	10	11	12
Algebra 1	H Algebra 2	H Geometry	AP Pre-Calc AP Stats	AP Calc(AB) AP Stats
	H Algebra 2 H Geometry	AP Pre-Calc H Geometry	AP Calc(AB) AP Stats	AP Calc(BC) AP Stats
Pre-Algebra	Algebra 1	Geometry	Algebra 2	AP Pre-Calc Trigonometry AP Stats

Impact on other offerings & staffing: **None** anticipated- this may reduce the number of sections of another Math offering but most-likely would not close another course.

Costs:

- Materials & PD Workshops= **Free** online
- Textbook = Average cost \$125
- Recommended **AP Summer Institute** = \$700 per teacher* for 30 hour PD (scholarships available)
- Recommended **AP Mentoring** during 2025-26 = \$300 per teacher*

*One teacher

Regular Meeting
KILLINGLY BOARD OF EDUCATION
Wednesday, December 11, 2024
7:00 PM
Central Office 79 Westfield Ave., Killingly CT 06239
Conference Room A

MINUTES

Present: Laura Dombkowski, Meredith Giambattista, Laura Lawrence (absent with notification), Kevin Marcoux, Kelly Martin, Misty Murdock, Kyle Napierata, Danny Rovero (absent with notification), Susan Lannon (absent with notification).
Student Board Member, Emerson Joly.

Guests: Superintendent Susan Nash, Assistant Superintendent Jeffrey Guiot, and Acting Recording Secretary Susan Theroux

1. CALL TO ORDER & PLEDGE OF ALLEGIANCE

Meredith Giambattista, Acting Board Chairperson, called the meeting to order at 7:08 pm and Kelly Martin led the Pledge of Allegiance.

2. ROLL CALL- See above

3. BOARD SHOUT-OUTS – Meredith Giambattista gave a shout out to Emily Ross and the volunteers that organized and worked the coat drive held at Killingly Memorial School.

4. REPORT BY STUDENT BOARD MEMBERS

Emerson Joly gave the Board an update of recent and upcoming events in the district. Some highlights of her report are below.

GECC: Goodyear celebrated Grandparents Day on November 26th by welcoming grandparents and family members. Guests were invited to join the children during Purposeful Play. This is a personal favorite event of GECC Director Sally Sherman.

KCS: On December 6th, the kindergarten classes went to the Killingly Community Center to see How The Grinch Stole Christmas. Students will be attending the KHS Winter Concert on December 12th. First graders have been practicing for their winter performance to be held at 10 am and again at 2 pm on December 19th. Friday, December 14th will be PJ Day. Students are encouraged to donate a dollar or more to wear their PJs. All proceeds will go to the Connecticut Children's Foundation for childhood cancer research, clinical trials, and care at Connecticut Children's Hospital.

KMS: Afterschool Enrichment Clubs are underway with 175 students participating in a variety of clubs. The KMS Math Interventionists provided a second professional development for classroom teachers where they focused on mathematical reasoning which centered around the importance of number relationships.

KIS: There are many exciting events taking place including the 7th Grade Chorus and Band Concert, the faculty and staff holiday get-together, KIS Family Fun Night, and the 8th Grade Chorus and Band Concert.

Basketball and cheerleading started with a tremendous amount of interest. This month's Habit of Work focus is on being an Active Learner. Teachers are working with students on developing the skills of using feedback to enhance learning.

KHS: Congratulations to Coach Chad Neal for being recognized as the ECC Coach of the Year and Hayden Allard as the ECC Player of the Year! Quarter 2 progress reports are out. We are excited to welcome students from all our schools this week for the holiday concert. The public is invited to the KHS Winter Celebration Concert on Friday, December 13th at 7 pm in the auditorium. The KHS Football Team will be playing in the State Championship Game on December 13th, 6:30 pm at Rentschler Field. The Great Things Happen Here assembly will take place when students return from the holiday break.

5. **PUBLIC COMMENT-** No public comments.

6. **TOWN COUNCIL LIAISON REPORT**

Town Council member Michelle Murphy shared that the council met yesterday and honored the Teachers of the Year from Killingly Public Schools, St. James Parochial School, and Ellis Technical High School. Wreaths Across America is taking place on December 14th at 12 pm. There was a consideration and action on a resolution adopting the collective bargaining agreement between the Killingly Board of Education and the Killingly Administrator's Association for the period of July 1, 2025 to June 30th, 2028 and it passed. There were also several other resolutions that passed at the meeting. The elevator at the Town Hall is still not operating and is going to cost \$48,000 to repair. The Killingly Police Department was awarded the State of CT Tier I Accreditation Award. Senator Blumenthal is coming Friday to assist in getting earmarked funding to complete upgrades to the sewer plant.

7. **BOARD CHAIRPERSON, COMMITTEE & LIAISON UPDATES**

A. Curriculum Committee

The committee met earlier this evening and discussed the potential for the ELA CKLA curriculum at the middle school. More information will be gathered before it is brought to the Board. The committee also discussed implementing AP Statistics and AP Pre-Calculus at the high school.

B. Facilities Committee- No report

C. Fiscal Committee- No report

D. Personnel Committee

The committee will meet tomorrow to begin negotiations with transportation.

E. Policy Committee- No report

F. AdHoc Committee to Discuss District-wide Bullying- No report

G. AdHoc Committee to Discuss School Mascot

On November 26th, an event was held at Killingly High School to retire the Redmen/Redgal mascot. It was a good evening with many people purchasing their old football jerseys or purchasing them for family members who used to be on the team. Students had gone through old yearbooks dating back to 1926 and created a video collage which played at the event. There was also a Powder Puff Football Game out on the turf field. We wrapped up the third multigenerational meeting with the Town Historian. Many good ideas were generated from these meetings, and we have narrowed the options down to about five. We are waiting for the football season to conclude before we move forward. Jamie Carver, Dept. Chair of the Art Dept. at Killingly High School has some honors art students that can help with the design of imagery. The committee has also looked at AI assisting with design. A package will be put together with possible imagery and the historical significance of those names and it will go out for a vote to the Killingly High School community.

8. FINANCIAL REPORT for the MONTH OF NOVEMBER 2024

Manager of Business Affairs, Christine Clark, shared some key points of the November financial report. November is a repeat of what was shared in October with some updated numbers. Salary projections, out of district placement costs, and excess cost reimbursement estimations were shared and how they impact the budget. All the numbers given are subject to change. There were 16 outstanding Purchase Orders for the 23-24 school year and there is continuing progress on resolving those open issues.

9. REVIEW AND POSSIBLE ACTION REGARDING MONTHLY CHECK AUTHORIZATION

MOTION: by Kevin Marcoux, seconded by Misty Murdock to approve monthly check authorization as presented.

Yes- 6, Unanimous

Motion Carries

10. DISCUSSION AND POSSIBLE ACTION OF TRANSFER OVER \$10,000 FOR KHS STUDENT INTERVENTION SUPPORT

Dr. Nash shared that in the teacher's salary line of the budget, there are funds for a reading interventionist position at Killingly High School. This was a new position approved by the Board during the last budget cycle. There have been no properly certified applicants for this position, so the position remains unfilled. We would like to transfer the funds to the tutoring line to be used for a current math tutor at the high school who sees about 50 students a day and has been successfully tutoring them for SAT prep.

Motion: by Kevin Marcoux, seconded by Misty Murdock to approve the transfer of over \$10,000 for KHS Student Intervention Support.

Yes- 6, Unanimous

Motion Carries

11. SUPERINTENDENT'S UPDATE

A. Discussion Regarding the Process of a Middle School Principal Search

The search for a new Middle School Principal will begin in January. We hope to get the most talented candidates by starting the search early in the year. Dr. Nash referred to Policy 4112 which generally states that the Board of Education has the right to decide how we proceed with the process of a principal search. There are different ways to proceed with the search. The Personnel Committee discussed the option of having a committee as we normally do, consisting of board members, staff, parents, and even students. That committee then recommends two or three finalists to come before the Board for a final interview in executive session and the Board makes the final decision. The other option would be for the Board to sit on the committee and go through the process and then the finalists would go to the Superintendent for final interviews and the Superintendent decides. There are typically two rounds of interviews, the initial interviews and then a performance task.

There was discussion on the different ways to proceed and some members voiced that they like having some Board members volunteer to serve on the search committee and then have the finalists interview with the Board in executive session.

B. Discussion and Possible Action Regarding a Middle School Athletic Director Position.

There has been discussion around support at the middle school for an Athletic Director. There is a

stipend in the teachers' contract for a position at the middle school of Athletic Director. This line was zeroed when the district-wide Athletic Director position was made full time. There are restraints in the full-time position which don't allow for the athletic director to be at all games at both the high school and the middle school. We would like to refund the middle school athletic director to the Level 3 Stipend that is had always been of \$5,441.00. The question was asked if this would be filled internally or could there be external candidates. Since the stipend is part of the teachers' contract, the position would be filled from within.

Motion: by Kevin Marcoux, seconded by Misty Murdock to approve refunding the Level 3 Stipend of \$5,441.00 for the Killingly Intermediate School Athletic Director.

Yes- 6, Unanimous

Motion Carries

C. Discussion and Possible Action of Board Meeting Dates Sept. 2025 through Dec. 2025

Motion: by Kelly Martin, seconded by Misty Murdock to approve Board Meeting Dates for Sept. 2025 – Dec. 2025.

Yes- 6, Unanimous

Motion Carries

D. Budget Update/Overview

Dr. Nash presented a Budget Kickoff: The presentation showed where we are in the budget cycle, reviewed last year's budget process and how we navigated through decisions on where to make the cuts. There was an overview of a 10-year span of increases/decreases in the budget, things to consider, and drivers that meet the Board of Education goals.

12. DISCUSSION AND POSSIBLE ACTION REGARDING SCHOOL-BASED HEALTH ALLIANCE GRANT

Mr. Guiot explained how this grant would enhance our current mental health supports. We would be applying for the maximum award of \$100,000.00 and included would be the purchase of Second Step SEL Curriculum. The Board would like to review the SEL curriculum before it is purchased but there was concern that there would not be flexibility in the grant to make a change. Mr. Guiot assured the Board that new curriculum would not be purchased or implemented without review by the Curriculum Committee, and that revisions are allowed in the grant if needed.

Motion: by Kevin Marcoux, seconded by Misty Murdock to approve the application for the School-Based Health Alliance Grant.

Yes- 6, Unanimous

Motion Carries

13. CONSENT AGENDA

- A. November 13, 2024 Board Meeting Minutes
- B. December 2, 2024 Student Enrollment
- C. Field Trip Request: KIS Ski Club to Mount Wachusett

Kevin Marcoux asked to pull consent item 13.A November 13, 2024 Board Meeting Minutes

Motion: by Kevin Marcoux, seconded by Misty Murdock to approve 13.B through 13.C
Yes- 6, Unanimous
Motion Carries

Motion: by Misty Murdock, seconded by Kyle Napierata to approve consent item 13.A
November 13, 2024 Board Meeting Minutes.
Yes- 5
Abstain- 1 Kevin Marcoux
Motion Carries

14. ADJOURNMENT

Motion: by Kyle Napierata, seconded by Misty Murdock to adjourn at 7:56 pm.
Yes- 6, Unanimous
Motion Carries

Respectfully submitted by,
Susan Theroux
Acting Recording Secretary

2024-2025 Killingly Public Schools Student Enrollment

January 2, 2025									December 2, 2024							
GRADE	KHS	KIS	KCS	KMS	GDYR	OD			GRADE	KHS	KIS	KCS	KMS	GDYR	OD	
PREK			24		122	0			PREK			24		120	0	
K			142			0		K			139				0	
1			147			3		1			147				3	
2				170		0		2				169			0	
3				145		2		3				147			2	
4				173		3		4				172			2	
5		165				3		5		163					3	
6		182				5		6		183					5	
7		178				5		7		180					4	
8		166				5		8		166					5	
9	191					7		9	192						7	
10	179					11		10	180						11	
11	205					6		11	204						6	
12	160					17	12	160						17		
Totals	735	691	313	488	122	67	2,416		Totals	736	692	310	488	120	65	2,411
COMPARATIVE DATA: 2023-2025									KMS by Teacher		KCS by Teacher					
									Crabtree, M.-2		20	Griffiths, D.-PreK		11		
									Fratoni, D.-2		19	Racine, M.-PreK		13		
									Juhola, N.-2		18	Angelo, K.-K		18		
									Lanzoni, L.-2		19	Collins, K.-K		20		
January 4, 2023		105	339	531	664	773	54	2,466	Maheu, J. - 2	20	Crawford, K.-K		21			
February 1, 2023		110	340	530	665	763	58	2,466	McMerriman,S.-2	18	Horne, F.-K		20			
March 1, 2023		109	340	526	665	762	58	2,460	Moulton, J.-2	19	Livingston, H.-K		20			
April 3, 2023		115	340	527	657	766	59	2,464	Riordan, E.-2	19	Lopez, K.-K		21			
May 1, 2023		118	340	527	659	765	58	2,467	Sakidovitch, A.-2	18	Parsell, S.-K		18			
June 1, 2023		119	339	526	655	764	57	2,460	Bitgood, C.-3	19	Blackmar, C.-1		13			
June 23, 2023		118	339	527	655	760	58	2,457	Breen, T.-3	19	Brock, J.-1		16			
September 1, 2023		117	324	500	704	771	59	2,475	Carlson, J.-3	17	Bufmack, E. - 1		14			
October 2, 2023		117	326	485	697	760	62	2,447	Gaulin, N.-3	19	Guillot, J.-1		14			
November 1, 2023		117	328	484	698	752	61	2,440	Hand, H.-3	17	Hanson, D. -1		17			
December 1, 2023		120	329	483	699	751	58	2,440	Penner, K. -3	18	Horvath S.-1		16			
January 3, 2024		119	327	484	697	749	61	2,437	Siegmund, L.-3	18	Santaniello,M.-1		17			
February 1, 2024		119	324	481	694	755	64	2,437	Tillinghast, A.-3	18	Steuernagel, M.-1		14			
March 1, 2024		123	319	482	685	754	66	2,429	Breen, C.-4	21	Watson, J.-1		16			
April 1, 2024		128	320	483	685	746	68	2,430	Burdick, S.-4	22	Gagnon, R. - IL		4			
May 1, 2024		130	319	483	683	744	70	2,429	Delfarno, M.-4	21	Lohgry, S -IL		10			
June 3, 2024		132	319	485	683	736	68	2,423	Ellal, H.-4	22	Total		313			
June 17, 2024		132	319	485	683	732	69	2,420	Lee, B.-4	22						
September 3, 2024		118	317	496	690	749	63	2,433	Salisbury, R.-4	22						
October 1, 2024		119	315	486	692	744	64	2,420	Scott, A.-4	21						
November 1, 2024		119	310	490	695	737	64	2,415	Tenaglia, D.-4	22						
December 2, 2024		120	310	488	692	736	65	2,411	Total		488					
January 2, 2025			122	313	488	691	735	67	2,416							
								0								
								0								
								0								

Agency and Sp. Ed. Placements	
Agency-Out of District	
Domus -Stamford, CT	1
Agency Total	1
Local- Out of District	
ASD (American School for the Deaf), West Hartford, CT	1
ARC of NE CT - Danielson, CT	1
Bradley School New London - New London, CT	5
Bradley School Windham -Thompson, CT	7
CREC Birken - Bloomfield,CT	3
CREC Riverstreet - South Windsor, CT	2
EASTCONN Bridges - Columbia, CT	1
EASTCONN EVC -Willimantic, CT	2
EASTCONN NRP - Danielson, CT	8
EASTCONN Transition - Willimantic, CT	2
Groden Center - Providence, RI	1
High Road - Danielson, CT	2
Horizons - Windham, CT	1
Learning Clinic - Brooklyn,CT	3
Natchaug Joshua Center - Danielson, CT	3
Ocean Learning Academy , New London, CT	3
Project Genesis - Windham, CT	14
Sargent Rehabilitation Center , Providence, RI	1
Susan Wayne Center - Thompson, CT	3
Waterford Country School - Quaker Hill, CT	3
Local Out of District Total	66
Agency	1
Total	67

Killingly Central School

60 Soap Street, Killingly, CT 06241 - (860) 779-6750 - FAX (860)774-3299
PRINCIPAL - Emily Caviggia ASSISTANT PRINCIPAL - Meghan Therrien

January 2, 2025

It is with great pleasure and honor that I recommend Mrs. Adrianna Randolph for KPS's Employee of the Month. Adrianna, affectionately known as Miss Audri by both students and staff, has been a vital and cherished member of our kindergarten team. For the past several years, Audri has worked side by side with Mrs. Kelsey Crawford-Vasquez, where she has proven herself to be an exemplary paraeducator who goes above and beyond in every aspect of her role.

Audri plays a critical role in supporting Mrs. Crawford-Vasquez with the instruction and guidance of 22 energetic Kindergarten students. Her contributions extend beyond academics, as she also fosters the students' social and emotional growth, ensuring they feel safe, valued, and supported in their learning environment. Audri's patience, empathy, and unwavering commitment to student development are clearly evident in every interaction. She helps create a classroom that is both supportive and inclusive, where each child is given the attention and encouragement they need to thrive.

A gifted professional, Audri consistently demonstrates a willingness to lend a hand, not only to her colleagues within the kindergarten team but also to staff across the school when needs arise. Whether it's offering guidance, providing redirection, or assisting students in various ways, Audri is always there with a warm smile and a genuine eagerness to help. Her positive energy and cheerful disposition are contagious, making everyone in her presence feel lighter and brighter.

Audri's dedication to her role as a paraeducator is matched by her commitment to furthering her own education. While working full-time, she is also attending school at night, pursuing her certification as a Speech-Language Pathology Assistant. This speaks volumes about her drive and passion for making an even greater impact on students' lives.

In summary, Audri's exceptional work ethic, positive attitude, and dedication to both her students and professional growth make her an ideal candidate for Employee of the Month. She is an invaluable asset to our team and to the entire KPS community, and it is with deep appreciation that I recommend her for this honor.

Fondly,

Emily Caviggia, KCS Principal



Attend Today Achieve Tomorrow - Killingly Public Schools