

Special Education Information Night Class of 2029

December 10th, 2024

Tonight's Agenda

- Introductions
- Welcome
- Articulation Process
- General Education Supports
- Special Education Supports and Services
- Transition
- Resources

The Articulation Process

- High school teams attend IEP review meetings at our senders throughout the year
- Special Ed. course discussion and selection for 9th grade; for IEPs after January, tentative courses based on current IEP are held in schedule until we meet

Topics Covered at IEP/Artics

- Review of current progress and IEP goals
- Student's potential post-secondary "transition" goals
 - Parental and student input sought
- Student interest in activities, sports and/or clubs
- Team drafts recommended goals for high school

Topics Covered at IEP/Artics

- High school placement recommendations are made
- Related services are discussed
- Extended School Year (summer school) is discussed

District 225 Programming

- Daily School Schedule
- General Education Supports & Services
- Transition Planning
- Sports & Activities

Daily Schedule

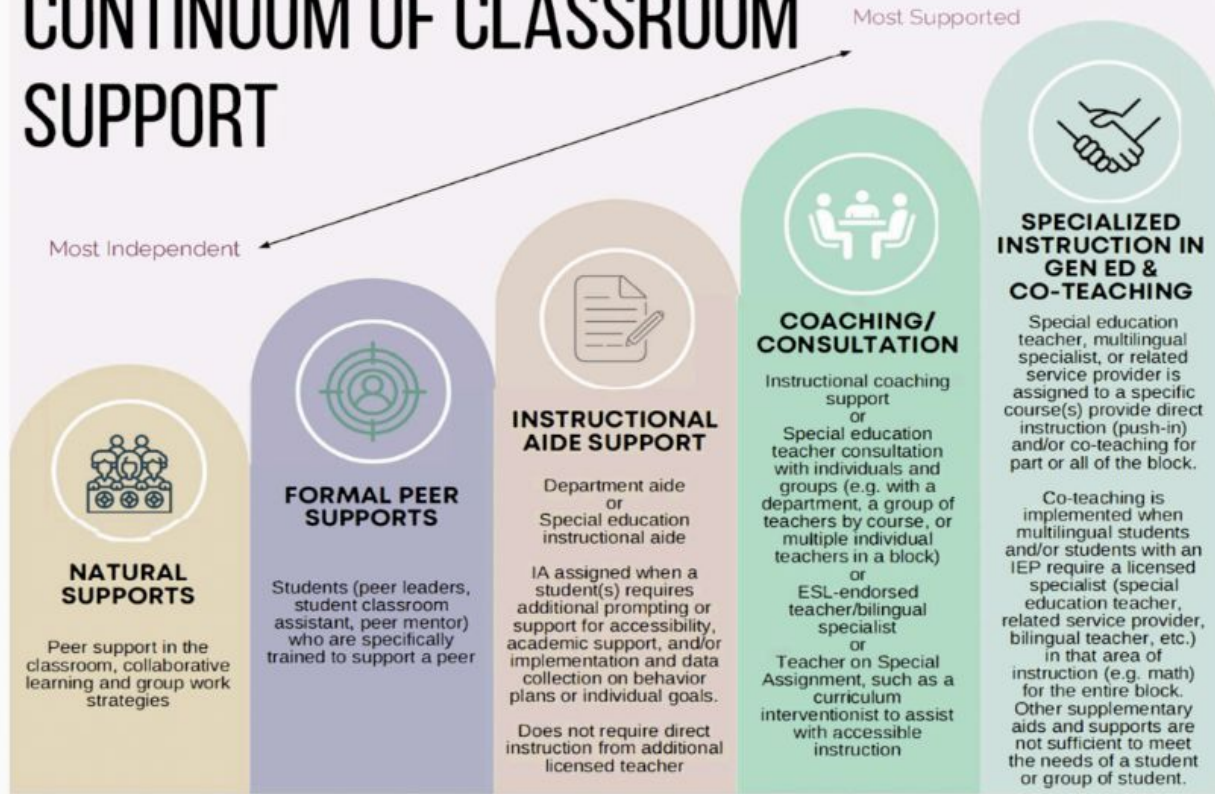
- 90 minute classes
- 4 classes per day
- Classes meet on alternating (Blue/Green and Gold) days

GBS BLOCK SCHEDULE		
BLUE / GOLD		
BLOCK 1 8:00-9:33 93 minutes		
9 minutes		
BLOCK 2 9:42-11:12 90 minutes		
9 minutes		
LUNCH 1 11:21-12:06 45 minutes	BLOCK 3 11:21-12:06 45 minutes	BLOCK 3 11:21-12:51 90 minutes
BLOCK 3 12:06-1:36 90 minutes	LUNCH 2 12:06-12:51 45 minutes	BLOCK 3 12:51-1:36 45 minutes
9 minutes		
BLOCK 4 1:45-3:15 90 minutes		

Supports & Services

- Supports & services are delivered in general education and special education settings
- Each student's plan is individualized and unique to their specific goals and post-secondary outcomes

CONTINUUM OF CLASSROOM SUPPORT



The level of support may increase or decrease based on the needs of the students and the course.

Special Education Setting

- Resource
- Instructional Courses
 - DLS (Developmental Learning Services) / TLS (Teaching Life Skills)
 - ARCH (Achieve, Realize, Contribute, Honor)-GBS/TASC (Therapeutic & Academic Support Continuum)-GBN
- Glenbrook Off Campus
- Therapeutic Schools outside of Glenbrook
- Related Services

Resource

- Individualized support based on the student's IEP goals
- May include: academic support, social/emotional support, self-advocacy, executive functioning skills, and postsecondary planning
- Whenever possible, resource is scheduled with the student's IEP case manager

Instructional (modified) Courses

- Curriculum
 - Academic
 - Students require modified curriculum and direct instruction to address below grade level academic skills (reading, writing, math)
 - Functional
 - Direct instruction to address social and vocational goals into a natural community environment
 - Options for life skills instruction such as functional academics, communication, leisure, vocational and social skills

Instructional (modified) Courses

- Environment
 - Smaller class size
 - (max of 13 pupils per special education teacher)
 - Whole group, small group, and/or 1:1 instruction
 - Classes may include a general instructional assistant
 - Students move between teachers and/or classrooms for each subject

ARCH/TASC

- Therapeutic support provided to students to overcome emotional and/or behavioral interference and achieve academic and personal success
- Instructional classes with up to 13 students
- Group and/or individual counseling are offered based on student need and determined through IEP team discussion
- Courses are designed to bridge the academic gap and foster success in general education classes

Glenbrook Off Campus

- Glenbrook Off-Campus is a small, public therapeutic day school run by Glenbrook High School District 225 for students with disabilities.
- All of the students enrolled at Glenbrook Off-Campus come from either Glenbrook North or Glenbrook South High School.
- The Glenbrook Off-Campus School has approximately fifty high school students and twenty-five staff members including teachers, therapists, assistants and others.

Hybrid Schedules

Hybrid Schedules (aka Bridging)

- Students taking classes both at their day school and their HS home school
- Typically two courses are selected due to the Block schedule at Both schools
- Start with one block and then build accordingly per semester (if GenEd) or quarter (if a special education instructional class)

Therapeutic Schools Outside of Glenbrook

Public and Private Therapeutic Day Schools by IEP Team

- Transcripts
- Extracurriculars
- Events/Activities
- Participation in GBN/GBS classes

Glenbrook Related Services

Counseling Services

- includes services provided by social workers, psychologists, guidance counselors, or other qualified personnel

Speech-Language Pathology Services

- includes identification and diagnosis of speech or language impairments, speech or language therapy, counseling and guidance

Services are provided to the students through a wide variety of means

- Pull-out or Individual therapy
- Small and Large group therapies
- Integrated therapy (which takes place right in the classroom)
- Consultative therapy

Occupational Therapy

- includes therapy to remediate fine motor skills

Physical Therapy

- includes therapy to remediate gross motor skills

Orientation and Mobility/Vision Services

- includes services to visually impaired students that enable students to move safely at home, school, and community

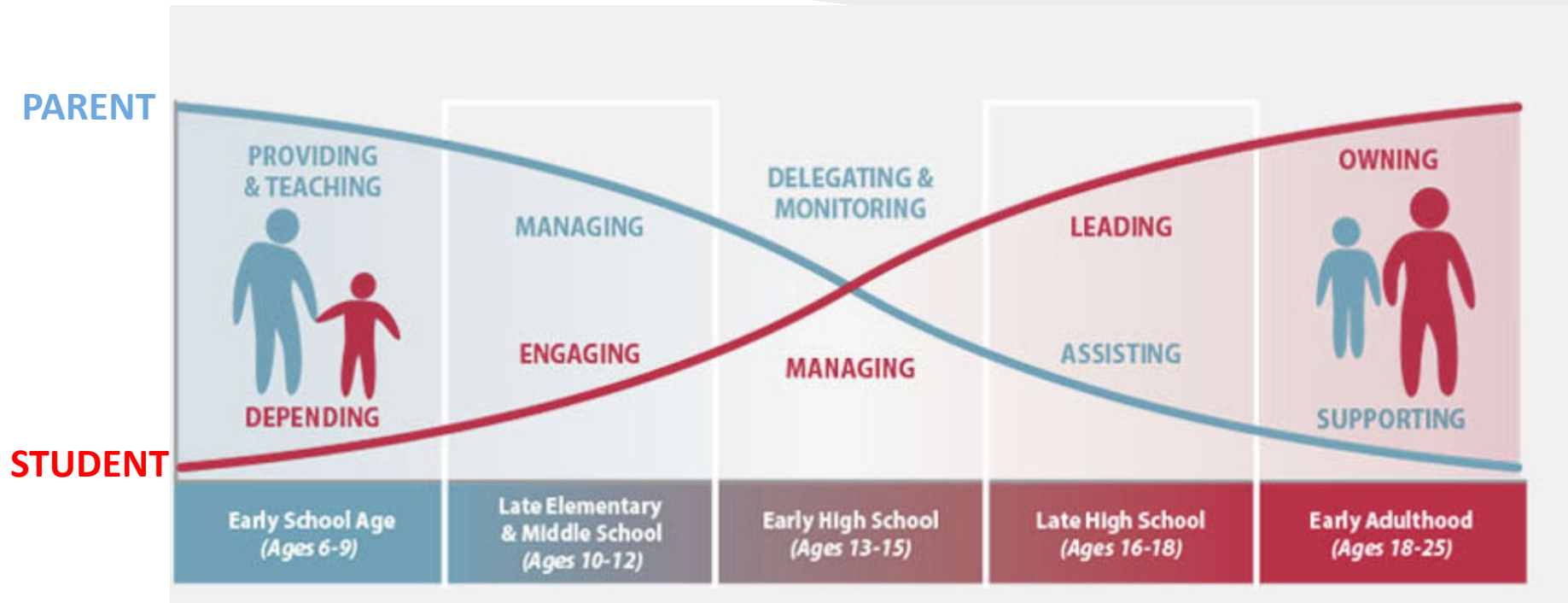
NSSEO Deaf/Hard of Hearing Program

- provides diagnostic, educational and related services to students who are deaf and hard of hearing, ages birth to 21

Transition Planning

- Self Advocacy/Self Determination
- Transition Plan in the IEP
- www.glenbrooktransition.org
- Shift in responsibility
- Transition Team
 - Julie Smith, GBS
 - Ron Gatchalian, GBN
 - Jaelyn Glasebrook, GBOC
 - Caitlin Locke, Transition

Consider the Shift



Activities & Peer Connections

- Students encouraged to join all general school clubs, activities, and athletics!
- We also offer specialized options:
 - Council for Exceptional Children (GBS)
 - Circle of Friends (GBN)
 - Spartan Buddies (GBN)
 - Peer Mentoring (GBN & GBS)
 - CAAEL (GBOC)



Glenbrook United



We are proud to welcome Special Olympics to our schools-- a district team uniting Glenbrook North, South, Off-Campus and Transition students through friendly competition, engaging activities and sportsmanship.

9 Exciting Sports

- Volleyball
- Bocce
- Floor hockey
- Basketball
- Snow Shoe
- Soccer
- Flag Football
- Track
- Golf

Students learn to

- exercise
- play new sports
- be a member of a team
- build peer relationships

<https://www.glenbrook225.org/our-district/departments/special-education/glenbrook-united>

Registration!

Event tomorrow

- 12/11, 4-6:30pm
- Where? Right here!
- Fliers available in the back

GBN Resources

Kathy French
Instructional Supervisor of Special
Education Glenbrook North High
School
847-509-2667
kfrench@glenbrook225.org

Kathy Ciss
LEA Rep/Compliance Supervisor
Glenbrook North High School
847-509-4088
kciss@glenbrook225.org

Ron Gatchalian
Transition Specialist
Glenbrook North High School
847-509-2449
rgatchalian@glenbrook225.org

Kelly Chilver
Assistant Instructional Supervisor
Glenbrook North High School
847-509-2577
kchilver@glenbrook225.org

Pearl Lee
Assistant Instructional Supervisor
Glenbrook North High School
847-509-2664
plee@glenbrook225.org

Darin Sullivan
Assistant Instructional Supervisor
Glenbrook North High School
847-509-2660
dsullivan@glenbrook225.org

GBS Resources

Bridget Bucklin
Instructional Supervisor of Special
Education Glenbrook South High School
847-486-4667
bbucklin@glenbrook225.org

Amy Hague
LEA/Compliance Supervisor
847-486-4817
ahague@glenbrook225.org

Julie Smith
Transition Specialist
Glenbrook South High School
847-486-4661
jsmith@glenbrook225.org

Mark Dec
Assistant Instructional Supervisor
Glenbrook South High School
847-486-4658
mdec@glenbrook225.org

Julie Feeney
Assistant Instructional Supervisor
Glenbrook South High School
847-486-4279
jfeeney@glenbrook225.org

GBOC Resources

Doug Schiller
Assistant Director of
Glenbrook Off Campus
847-486-5751
dschiller@glenbrook225.org

Silas Dick
LEA/Compliance Supervisor
Glenbrook Off Campus
847-486
sdick@glenbrook225.org

District 225 Resources

Dr. Jennifer Pearson
Director of Special Education
District 225
847-486-4708
jpearson@glenbrook225.org

Renee Cheung
District 225 Placement Coordinator
LEA/Compliance Supervisor
847-486-5754
rcheung@glenbrook225.org

Stacey Wolfe
Assistant Director of Transition
Services
847-486-4715
swolfe@glenbrook225.org