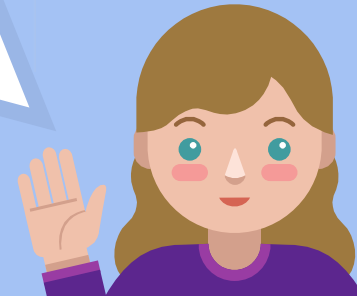


Families



ESOL Teachers

2

- ★ Chrissy Evans ➡ Kindergarten-2nd
Email: chrissy.evans@elbert.k12.ga.us
Phone: 706-213-4700 (ECPS)
- ★ Joanna Jarvis ➡ 3rd-5th
Email: joanna.jarvis@elbert.k12.ga.us
Phone: 706-213-4600 (ECES)
- ★ Betsy Wagenknecht ➡ 6th-8th
Email: betsy.wagenknecht@elbert.k12.ga.us
Phone: 706-213-4200 (ECMS)
- ★ Tracy Brown ➡ 9th-12th
Email: tracy.brown@elbert.k12.ga.us
Phone: 706-213-4100 (ECCHS)



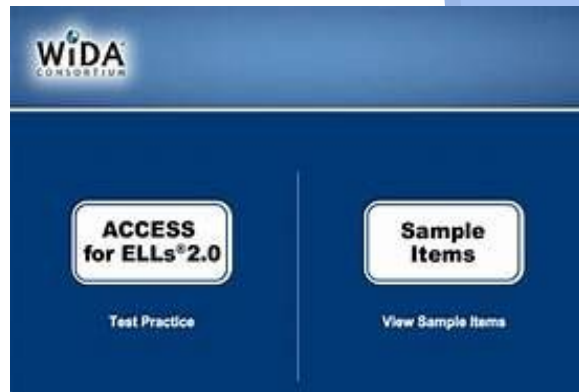
ESOL...

- ★ stands for English to Speakers of other Languages
- ★ a program of English language instruction designed to help non-English speakers acquire English.
- ★ uses instructional strategies to teach students listening, speaking, reading, and writing skills in the classroom.
- ★ for students in Kindergarten through 12th grade (based on HLS).



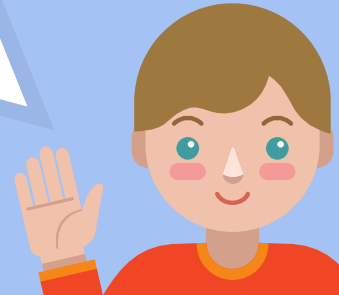
Test?

- ★ In January, your child will begin taking the WIDA ACCESS Test.
- ★ ACCESS for ELLs 2.0 is given annually to all English Language Learners in Georgia.
- ★ The test is made up of four parts: Listening, Reading, Speaking, and Writing.
- ★ Students must receive a 4.3 or higher to exit the program.
- ★ Results are usually given in May.



Purpose for ACCESS Test

- ★ It helps students and families understand a student's current level of language proficiency.
- ★ Determines whether students are prepared to exit English language support programs.
- ★ Provides teachers with information they can use to improve instruction for their English language learners.
- ★ Provides districts with information that will help them evaluate the effectiveness of their ESL/bilingual programs.



ACCESS Scores



ACCESS for ELLs 2.0[®]
English Language Proficiency Test

Sample Student

Birth Date: mm/dd/yyyy | Grade: sample grade
Tier: sample tier
District ID: XXXXXXXXXX | State ID: XXXXXXXXXX
School: sample school
District: sample district
State: sample state

Individual Student Report 2016

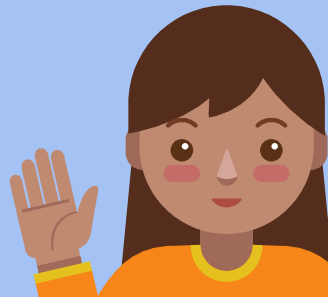
This report provides information about the student's scores on the ACCESS for ELLs 2.0 English language proficiency test. This test is based on the WIDA English Language Development Standards and is used to measure students' progress in learning English. Scores are reported as Language Proficiency Levels and as Scale Scores.



*Overall score is calculated only when all four domains have been assessed. NA: Not available

Domain	Proficiency Level	Students at this level generally can...
Listening	4	<ul style="list-style-type: none"> understand oral language in English related to specific topics in school and can participate in class discussions, for example: <ul style="list-style-type: none"> Exchange information and ideas with others Connect people and events based on oral information Apply key information about processes or concepts presented orally Identify positions or points of view on issues in oral discussions
Speaking	2	<ul style="list-style-type: none"> communicate ideas and information orally in English using language that contains short sentences and everyday words and phrases, for example: <ul style="list-style-type: none"> Share about what, when, or where something happened Compare objects, people, pictures, events Describe steps in cycles or processes Express opinions
Reading	3	<ul style="list-style-type: none"> understand written language related to common topics in school and can participate in class discussions, for example: <ul style="list-style-type: none"> Classify main ideas and examples in written information Identify main information that tells who, what, when or where something happened Identify steps in written processes and procedures Recognize language related to claims and supporting evidence
Writing	3	<ul style="list-style-type: none"> communicate in writing in English using language related to common topics in school, for example: <ul style="list-style-type: none"> Describe familiar issues and events Create stories or short narratives Describe processes and procedures with some details Give opinions with reasons in a few short sentences

For details regarding the scores on this report, refer to the Interpretive Guide for Score Reports at www.wida.us/interprep



ways to help your child at home

- ★ Ask your child about his or her day.
- ★ Encourage your child to read and write every day at home!
- ★ Help your child focus better in school by getting enough sleep at night.
- ★ Communicate with your child's teacher as often as you need to.



★ Translation Help

- Google Translate - The app will translate handwriting, conversation, documents, etc. in your language!
- Helpful Tip: ECSD Language Option

- ★ In January, you will receive information regarding ACCESS testing dates.
- ★ Please do not hesitate to email/call us with any questions or concerns.



[illegible]