



FutureThink
PLAN TO EMPOWER

FINAL REPORT



**Facilities
Construction
Commission**

Lakota Local School District

Butler County

Enrollment Projections

July 30, 2024

INTRODUCTION

Based on a request from the Ohio Facilities Construction Commission, **FutureThink** was contracted to develop enrollment projections for the Lakota Local School District.

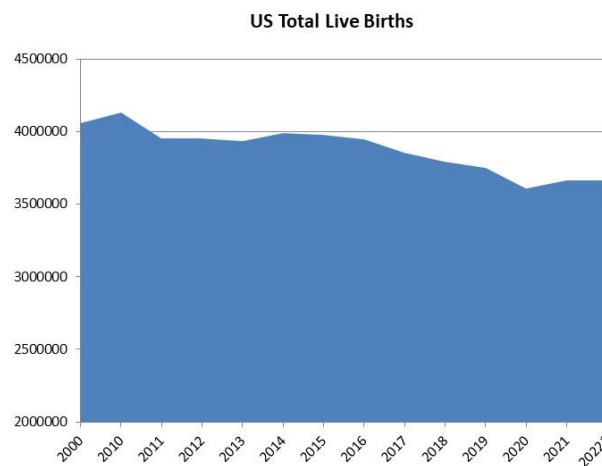
This report contains ten-year enrollment projections, which were developed for the Lakota Local School District by analyzing the following data:

- ▶ Live birth data
- ▶ Historical enrollment
- ▶ Community school enrollment
- ▶ Open enrollment
- ▶ Community demographics
- ▶ Housing information

The projections presented in this report are meant to serve as a planning tool for the future and represent the most likely direction of the District.

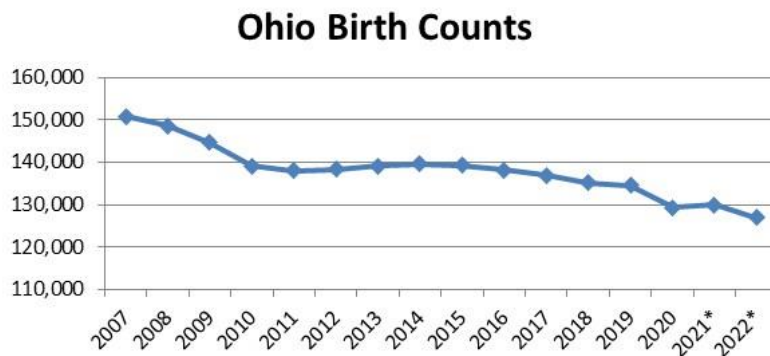
NATIONAL & OHIO TRENDS IN ENROLLMENT

The United States as a whole continues to undergo major shifts in public student enrollment. Births are a significant part of this shift. From 2000 to 2010, births increased then declined until 2014 when there was a slight uptick. Since 2014, there has been steady decline reaching an all-time low in 2020. The decrease from 2019 to 2020 was approximately 4 percent. However, in 2021, there was a slight uptick of 1.5 percent. Births dropped slightly from 2021 to 2022.



Source: CDC, NVSS, National Vital Statistics Reports, Report No. 28, June 2023

From 2007 to 2011, Ohio births declined by 12,760 and then somewhat leveled off through 2014. Since 2014, births have dropped each year with a slight uptick from 2020 to 2021. From 2021 to 2022, births declined by almost 3,000 or 2.3 percent.



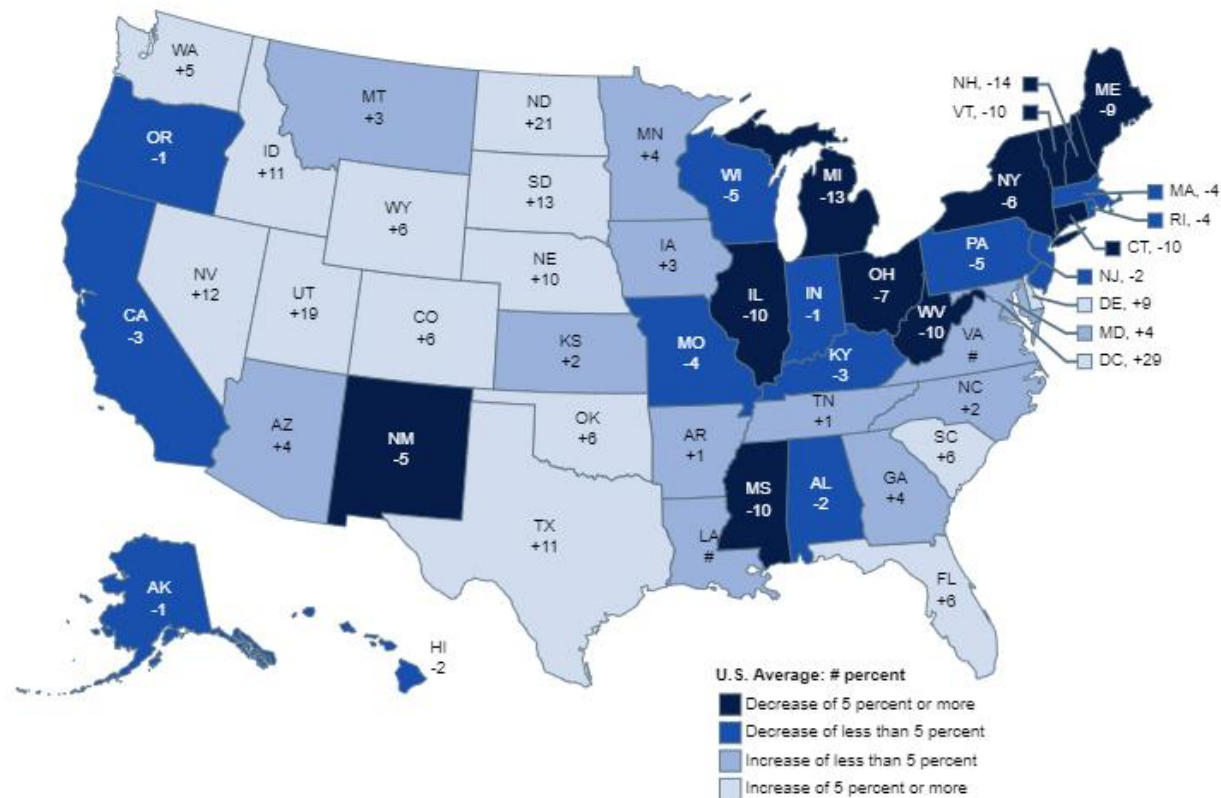
Lakota Local School District

In addition to births dropping in Ohio, the state is also aging. The median age in 2021 was 40.5 years of age while the national median age was 38.8 years. In 2010, the median age in Ohio was 38.3 years.

From the 2019-20 to the 2020-21 school year, total public school enrollment in Pre-K - 12 dropped from 50.8 million to 49.4 million students. From 2009-10 to the 2019-20 school year, however, enrollment had increased overall by 1.4 million.

The figure below illustrates the change in Pre-K - 12 public school enrollment from the 2009-10 to the 2020-21 school year. States with growth in enrollment were primarily in the southeast and west. Ohio experienced a decrease of 7 percent.

Figure 2. Percentage change in public elementary and secondary school enrollment, categorized into specific ranges, by state: Fall 2009 to fall 2020



Rounds to zero.

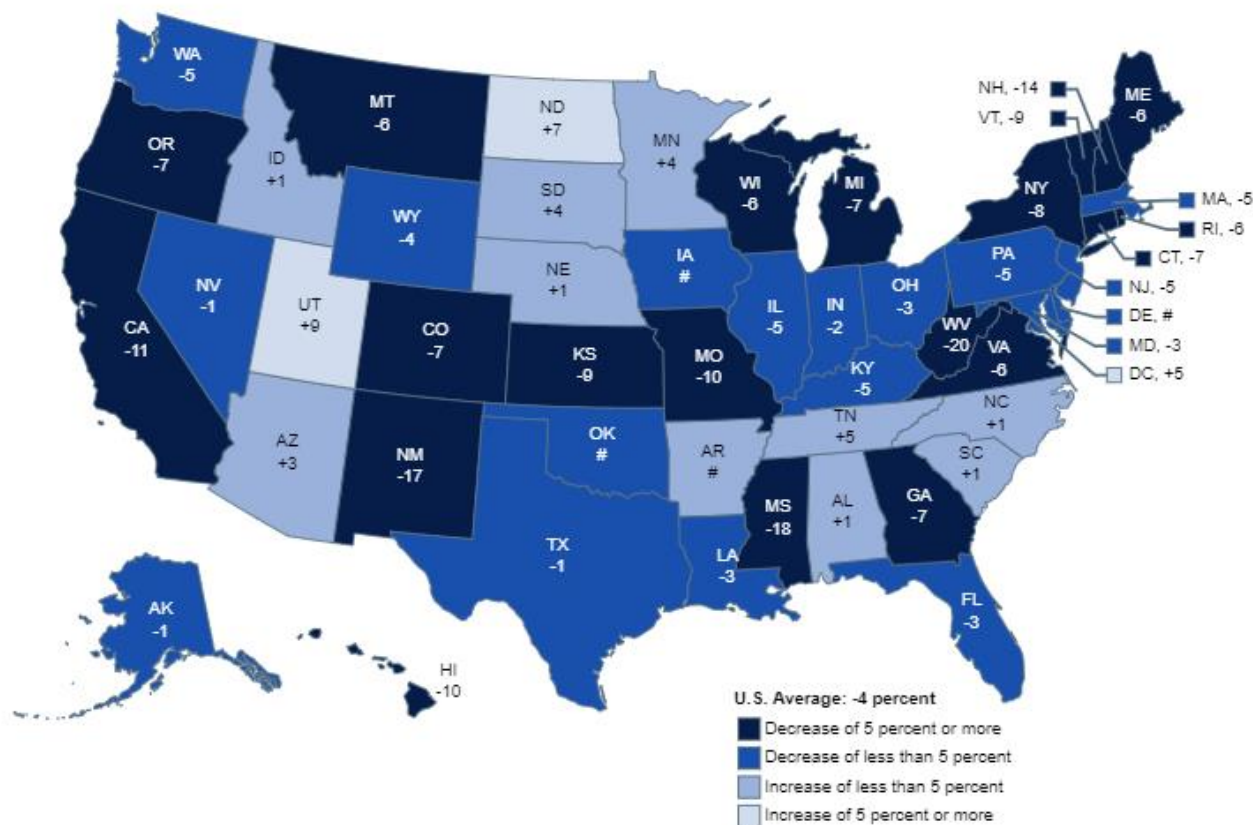
NOTE: U.S. average is for the 50 states and the District of Columbia. Data include both traditional public schools and public charter schools. Includes imputations for nonreported prekindergarten enrollment in California and Oregon for fall 2020. Includes imputations for nonreported enrollment for all grades in Illinois for fall 2020. Categorizations are based on unrounded percentages.

SOURCE: U.S. Department of Education, National Center for Education Statistics, Common Core of Data (CCD), "State Nonfiscal Survey of Public Elementary/Secondary Education," 2009-10 and 2020-21 Preliminary. See *Digest of Education Statistics 2021*, table 203.20.

Lakota Local School District

The figure below illustrates the projected change in Pre-K-12 public school enrollment from the 2020-21 to the 2030-31 school year. Growth is expected to continue primarily in parts of the southeast and upper midwest. Ohio is projected to experience a decrease of 3 percent.

Figure 3. Projected percentage change in public elementary and secondary school enrollment, categorized into specific ranges, by state: Fall 2020 to fall 2030



Rounds to zero.

NOTE: U.S. average is for the 50 states and the District of Columbia. Data include both traditional public schools and public charter schools. Includes imputations for nonreported prekindergarten enrollment in California and Oregon for fall 2020. Includes imputations for nonreported enrollment for all grades in Illinois for fall 2020. Projections in this figure were calculated after the onset of the coronavirus pandemic and take into account the expected impacts of the pandemic. Categorizations are based on unrounded percentages.

SOURCE: U.S. Department of Education, National Center for Education Statistics, Common Core of Data (CCD), "State Nonfiscal Survey of Public Elementary/Secondary Education," 2020-21 Preliminary; and State Public Elementary and Secondary Enrollment Projection Model, through 2030. See *Digest of Education Statistics 2021*, table 203.20.

Lakota Local School District

From 2013-14 to 2022-23, public school enrollment declined by 106,310 students or approximately 6% statewide. In 2021-22, there was a slight uptick of 5,810 or less than 0.5 percent.

Ohio Public School Enrollment

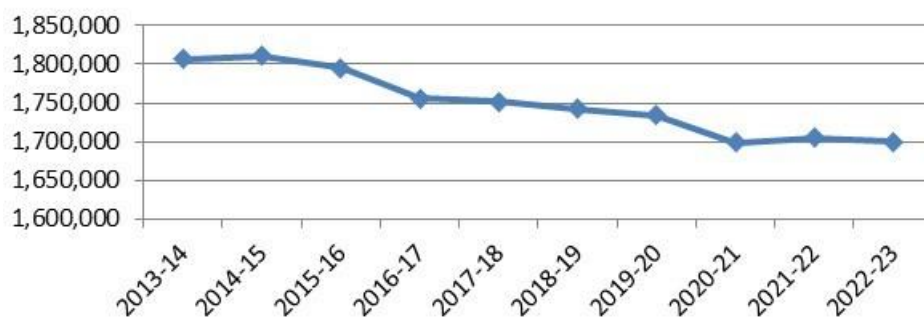
2013-14 - 2022-23

Year	October Headcount*
2013-14	1,806,267
2014-15	1,810,577
2015-16	1,795,339
2016-17	1,755,552
2017-18	1,751,888
2018-19	1,742,715
2019-20	1,733,911
2020-21	1,698,925
2021-22	1,704,735
2022-23	1,699,957

Source: Ohio Department of Education

*includes grades K-12 and ungraded

Ohio Public School Enrollment



Lakota Local School District

From 2013-14 to 2020-21, non-public school enrollment declined by 12,302 students or approximately 7 percent. However, in 2021-22, enrollment increased by over 4,000 students or approximately 3 percent. Enrollment increased again in 2022-23 by approximately 2,100 students.

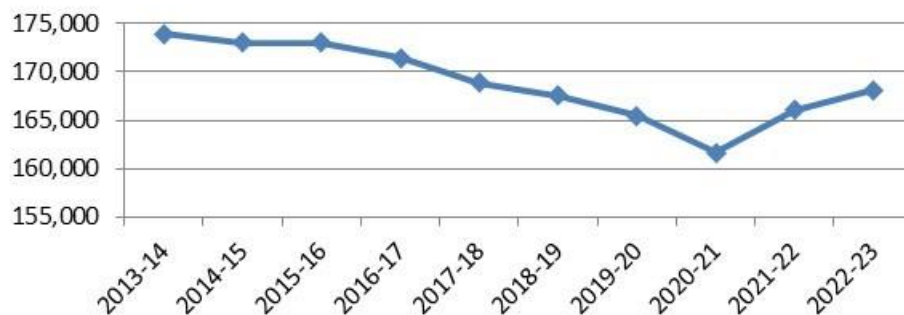
Ohio Chartered Non-Public School Enrollment 2013-14 - 2022-23

Year	October ADM*
2013-14	173,966
2014-15	173,030
2015-16	172,990
2016-17	171,426
2017-18	168,857
2018-19	167,558
2019-20	165,511
2020-21	161,664
2021-22	166,013
2022-23	168,111

Source: Ohio Department of Education

*includes grades K-12

Ohio Non-Public School Enrollment



Lakota Local School District

Out of 609 school districts, only 79 (or approximately 13%) gained enrollment in grades K - 12 from the 2013-14 to the 2022-23 school year and 2 districts experienced neither gain or loss in enrollment.

Of the 527 school districts who lost enrollment, 56 (or approximately 11%) lost less than 5 percent, and 133 districts (or approximately 25%) lost between 5 and 10 percent. Approximately 45% (or 239 districts) lost between 11 and 20 percent, and approximately 19% (or 99 districts) lost more than 20 percent.

For those districts that gained enrollment, 31 (or approximately 39%) increased by less than 5 percent, and 24 (or approximately 30%) increased between 5 and 10 percent. Fifteen districts (or approximately 19%) increased between 10 and 20%, and 9 districts (or approximately 11%) increased over 20 percent.

Analyzing enrollment from a county perspective, only 5 of the 88 counties in Ohio gained K – 12 enrollment from the 2013-14 to the 2022-23 school year: Delaware, Licking, Fairfield, Union, and Warren.

County	2022-23 K-12 Total	2013-14 K-12 Total	Difference	%
Delaware	34,167	28,918	5,249	18%
Licking	27,442	26,652	790	3%
Fairfield	25,339	24,661	678	3%
Union	7,851	7,720	131	2%
Warren	36,697	36,353	344	1%

Vinton County had the highest percentage loss of students at 24.4 percent. Sixty-five percent of the counties (57 total) experienced a decline of greater than 10 percent. The map on the following page illustrates the gain/loss for each county from the 2013-14 to 2022-23 school year.

ENROLLMENT PROJECTION METHODOLOGIES

When projecting future enrollments, it is vital to track the number of births, the patterns of enrollment, the amount of new housing activity, and the change in household composition.

In addition, any of the following factors could cause a significant change in projected student enrollments:

- ▶ Boundary adjustments
- ▶ New school openings
- ▶ Changes/additions in program offerings
- ▶ Preschool programs
- ▶ Change in grade configuration
- ▶ Interest rates/unemployment shifts
- ▶ Magnet/charter/private school opening or closure
- ▶ Zoning changes
- ▶ Unplanned new housing activity
- ▶ Planned, but not built, housing

Obviously, certain factors can be gauged and planned for far better than others. For instance, it may be relatively straightforward to gather housing data from local builders regarding the total number of lots in a planned subdivision and calculate the potential student yield. However, planning for changes in the unemployment rate, and how these may either boost or reduce public school enrollment, proves more difficult. In any case, it is essential to gather a wide variety of information in preparation for producing enrollment projections.

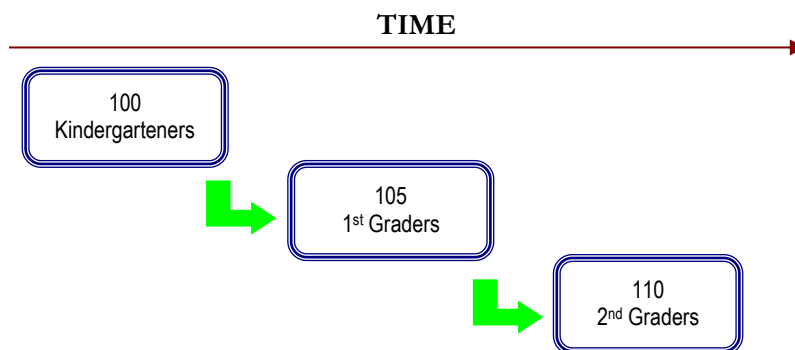
When looking ahead at a school district's enrollment over the next two, five, or ten years, it is helpful to approach the process from a global perspective. For example: How many new homes have been constructed each year? How many births have occurred each year in relation to the resident population? Is housing experiencing a turnover – if so, what is the composition of families moving in/out? Are more or less students attending private school or being home-schooled? What new educational policies are in place now that could affect student enrollment figures?

The data sets generated from questions such as these have led to the development of general methodologies to project future student enrollments. They are as follows:

Lakota Local School District

Cohort Survival Method

A cohort is a group of persons [in this case, students]. The cohort survival projection methodology uses previous live birth data and historical student enrollments to “age” a known population or cohort throughout the school grades. For instance, a cohort begins when a group of kindergarteners enrolls in grade K and moves to first grade the following year, second grade the next year, and so on.



A “survival ratio” is developed to track how this group of students grew or shrunk in number as they moved through the grade levels. By determining survival ratios for each grade transition [i.e., 1st to 2nd grade] over a ten-year period of time, patterns emerge and projection ratios can be developed to be used as a multiplier.

For example, if student enrollment has consistently increased from the 8th to the 9th grade over the past ten years, the survival ratios for each year would be greater than 100 percent. Through analysis of the survival ratios, the projection ratio is determined and is multiplied by the current 8th grade to develop a projection for next year’s 9th grade.

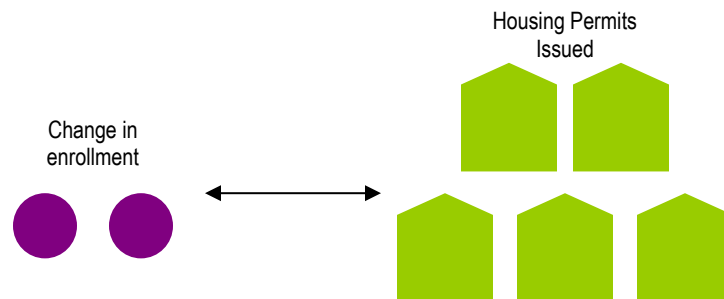
This methodology can be carried through to develop ten years of projection figures. Because there is not a grade cohort to follow for students coming into kindergarten, live birth counts are used to develop a survival ratio. Babies born five years previous to the kindergarten class are compared in number, and a ratio can be developed to project future kindergarten enrollments.

The cohort survival method is useful in areas where population is stable [relatively flat, growing steadily, or declining steadily], and where there have been no significant fluctuations in enrollment, births, and housing patterns from year to year.

Lakota Local School District

Housing

Enrollment projections can also be determined by analyzing the housing data for the areas that make up a school district. Yield factors can be established by comparing the historic change in enrollment from year to year divided by the total number of building or occupancy permits issued. For example, if student enrollment has increased by approximately 100 students each year and approximately 200 building permits have been issued each year for the past ten years, then the yield factor would be approximately .5 students per building permit.



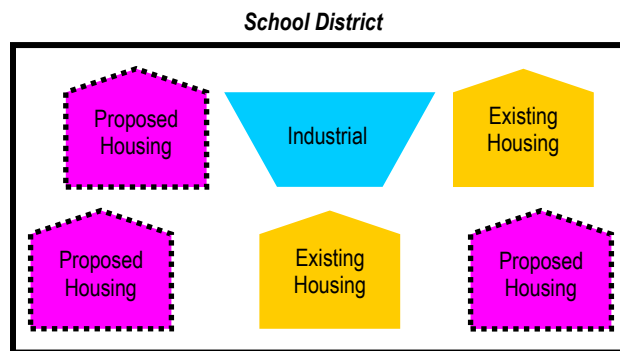
Once yield factors are established, the number of new students per year can be estimated by multiplying the yield factor by the number of projected new housing units. This method is effective when the rate of kindergarten enrollment far exceeds the live birth counts.

If housing demolitions are occurring in a district, these must also be taken into account. For instance, if housing demolitions/withdrawals have increased rapidly over recent years while new housing starts have remained relatively constant over many years, the conclusion may be that some of the new housing starts will simply be replacements for the families displaced by the demolitions. Of course, housing value and household composition would need to be further analyzed to confirm that this is indeed the case. It is possible that enrollment may remain flat or decline even though there is new housing occurring in the area.

Lakota Local School District

Land-Saturation Analysis

Housing data also drives the land-saturation analysis enrollment methodology. In areas where there is a high rate of development and the future development patterns in the area are clear, a “build-out” scenario can be developed. The scenario takes into consideration the remaining acreage to be developed, planned rate of completion, zoning policies, density per acre, type of housing, and ratios of school-age children per household type. This method is particularly useful in areas experiencing rapid growth.



Geographic Information Systems

While not a methodology, the need for better tools and easier manipulation of data has led to a new industry standard in planning – GIS [Geographic Information Systems]. GIS technology allows school districts to quickly analyze countless data sets including birth data, housing information, and enrollment statistics.

When paired with enrollment projections, GIS becomes an invaluable information-management and decision-making tool. Often, county or city offices are already implementing GIS technology and data can be shared and expanded among these organizations in the district. GIS tables and maps are included within this report illustrating population, age, and income estimates and projections.

The cohort survival was the primary method used in the development of the enrollment projections for the Lakota Local School District.

Lakota Local School District

HISTORICAL ENROLLMENT

Over the past ten years, student enrollment in the Lakota Local School District has increased by 2,080 students in grades Pre-K – 12, including ungraded and full-time JVS students. Total enrollment for the 2023-24 school year is 18,701 students.

The approximate percentages of mainstreamed special education students [Pre-K – 12] for the current school year are as follows:

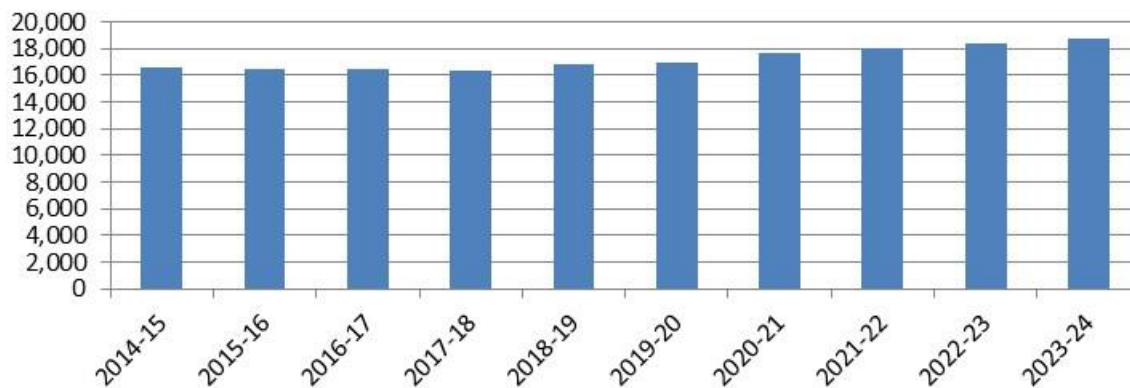
- Pre-K – <1%
- K-2 – <1%
- 3-6 – <1%
- 7-8 – <1%
- 9 – <1%
- 10-12 – <1%

The approximate percentages of self-contained special education students [Pre-K – 12] for the current school year are as follows:

- Pre-K – 2%
- K-2 – 2%
- 3-6 – 4%
- 7-8 – 3%
- 9 – 4%
- 10-12 – 4%

The following graph illustrates the District’s Pre-K – 12 enrollment history from 2014-15 through 2023-24.

**Lakota Local School District
Historical Enrollment**



Lakota Local School District

The following tables illustrate the District's enrollment history from 2014-15 through 2023-24.

**Lakota Local School District
Historical Enrollment**

Grade	2014-15	2015-16	2016-17	2017-18	2018-19	2019-20	2020-21	2021-22	2022-23	2023-24
Pre-K (regular)*	93	91	159	150	145	152	132	219	214	179
Pre-K (special needs)	140	139	139	143	129	156	239	293	305	333
K	1,048	964	938	1,072	1,291	1,236	1,221	1,301	1,311	1,223
1	1,135	1,169	1,056	1,072	1,204	1,351	1,334	1,311	1,379	1,324
2	1,234	1,133	1,190	1,081	1,115	1,232	1,414	1,357	1,327	1,374
3	1,188	1,283	1,149	1,214	1,160	1,154	1,304	1,415	1,396	1,349
4	1,266	1,206	1,300	1,164	1,238	1,172	1,232	1,347	1,449	1,396
5	1,299	1,306	1,211	1,322	1,195	1,287	1,261	1,257	1,364	1,470
6	1,296	1,320	1,338	1,233	1,344	1,265	1,386	1,289	1,293	1,393
7	1,353	1,287	1,321	1,316	1,279	1,389	1,328	1,399	1,344	1,320
8	1,402	1,345	1,305	1,336	1,339	1,315	1,454	1,369	1,395	1,370
9	1,238	1,364	1,319	1,261	1,343	1,300	1,331	1,477	1,419	1,466
10	1,325	1,210	1,370	1,320	1,300	1,390	1,342	1,309	1,462	1,417
11	1,192	1,224	1,140	1,284	1,199	1,181	1,281	1,217	1,211	1,504
12	1,051	1,101	1,153	1,102	1,244	1,171	1,196	1,255	1,220	1,297
Pre-K - 12 Total	16,260	16,142	16,088	16,070	16,525	16,751	17,455	17,815	18,089	18,415
Ungraded	44	42	35	51	51	52	0	0	0	36
JVS Full-Time	317	345	351	245	210	193	218	217	243	250
Grand Total	16,621	16,529	16,474	16,366	16,786	16,996	17,673	18,032	18,332	18,701

Source: Ohio Department of Education, EMIS; Lakota Local School District

**Lakota Local School District
Historical Enrollment by Grade Group**

Grade	2014-15	2015-16	2016-17	2017-18	2018-19	2019-20	2020-21	2021-22	2022-23	2023-24
Pre-K (special needs)	140	139	139	143	129	156	239	293	305	333
K - 2	3,417	3,266	3,184	3,225	3,610	3,819	3,969	3,969	4,017	3,921
3 - 6	5,049	5,115	4,998	4,933	4,937	4,878	5,183	5,308	5,502	5,608
7 - 8	2,755	2,632	2,626	2,652	2,618	2,704	2,782	2,768	2,739	2,690
9	1,238	1,364	1,319	1,261	1,343	1,300	1,331	1,477	1,419	1,466
10 - 12	3,568	3,535	3,663	3,706	3,743	3,742	3,819	3,781	3,893	4,218
Pre-K - 12 Total	16,167	16,051	15,929	15,920	16,380	16,599	17,323	17,596	17,875	18,236
Ungraded	44	42	35	51	51	52	0	0	0	36
Grand Total	16,211	16,093	15,964	15,971	16,431	16,651	17,323	17,596	17,875	18,272

Source: Ohio Department of Education, EMIS; Lakota Local School District

*regular Pre-K and full-time JVS enrollments are not included in grade group table above or in the projected enrollment figures

Lakota Local School District

COMMUNITY SCHOOL ENROLLMENT

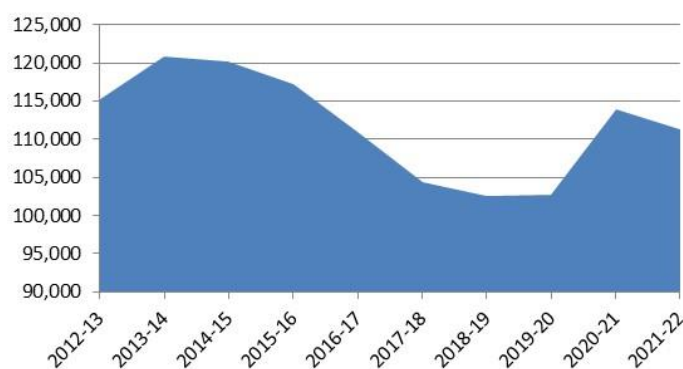
From 2012-13 to 2019-20, community school enrollment decreased by approximately 5% from 115,225 students in 367 community schools to 102,654 students in 313 community schools. However, there was an increase of 11% in enrollment from the 2019-20 to the 2020-21 school year. Enrollment declined by over 2,000 students from 2020-21 to 2021-22, but the number of community schools increased to 324.

State of Ohio
Community School Enrollment (Pre-K - 12)

Grade	2012-13	2013-14	2014-15	2015-16	2016-17	2017-18	2018-19	2019-20	2020-21	2021-22
Grand Total	115,225	120,893	120,200	117,282	110,961	104,380	102,563	102,654	113,900	111,370

Source: Ohio Department of Education, Ohio Community Schools Annual Report 2021-22
FTE students

Ohio Community School Enrollment

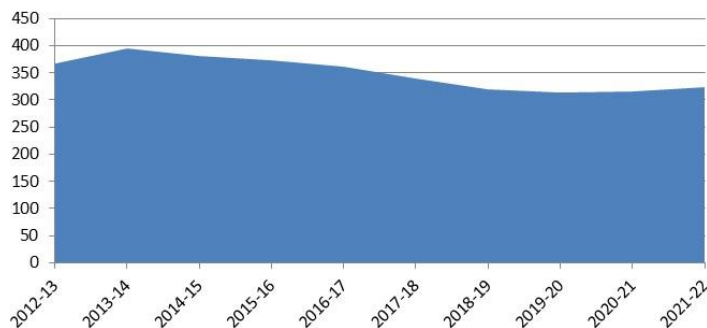


State of Ohio
Number of Community Schools

Grade	2012-13	2013-14	2014-15	2015-16	2016-17	2017-18	2018-19	2019-20	2020-21	2021-22
Grand Total	367	395	381	373	362	340	320	313	315	324

Source: Ohio Department of Education, Ohio Community Schools Annual Report 2021-22

Number of Community Schools in Ohio



Lakota Local School District

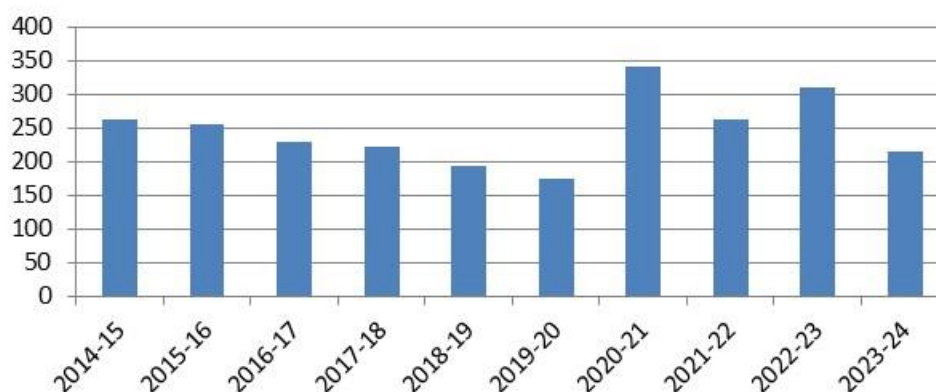
Since 2014-15, the number of Lakota Local School District students attending community schools has decreased from 263 to 214 students with some fluctuation. Enrollment of Lakota Local School District students attending community schools should be closely monitored as it may have a significant impact on District enrollment in the future.

**Lakota Local School District
Community School Enrollment**

Grade	2014-15	2015-16	2016-17	2017-18	2018-19	2019-20	2020-21	2021-22	2022-23	2023-24
Pre-K	0	0	0	0	0	0	0	0	0	0
K	12	3	5	8	8	7	34	17	36	34
1	12	10	7	3	6	5	23	8	24	8
2	9	9	5	5	4	5	20	11	18	6
3	11	11	7	7	7	3	22	10	14	6
4	14	7	11	6	9	10	16	13	15	14
5	12	13	7	15	7	9	27	15	20	10
6	12	11	15	10	10	7	20	22	12	16
7	15	11	13	17	11	11	21	14	19	7
8	19	27	16	20	11	12	26	23	30	24
9	31	36	29	24	31	19	34	29	29	28
10	37	35	31	37	22	33	29	38	30	23
11	40	46	31	30	36	24	35	29	38	20
12	39	36	52	41	31	29	34	33	25	18
Ungraded	0	0	0	0	0	0	0	0	0	0
Grand Total	263	255	229	223	193	174	341	262	310	214

Source: Ohio Department of Education, EMIS; Lakota Local School District

**Lakota Local School District
Students Attending Community Schools**



Lakota Local School District

ONLINE ENROLLMENT

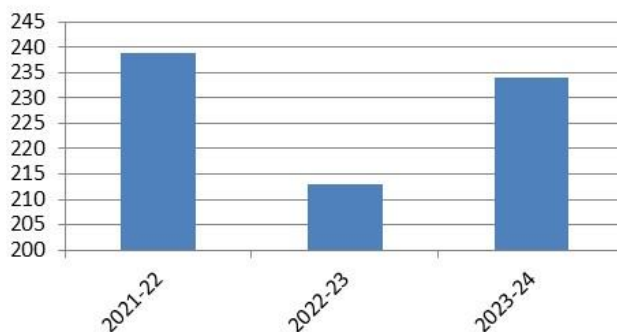
In the 2021-22 through 2023-24 school years, the number of Lakota Local School District students enrolled online schools was as follows.

**Lakota Local School District
Online Student Enrollment**

	2021-22	2022-23	2023-24
K	14	13	34
1	8	9	8
2	9	7	6
3	9	5	6
4	12	8	14
5	13	11	10
6	21	4	16
7	13	19	7
8	22	29	24
9	27	29	30
10	36	28	33
11	28	31	22
12	27	20	24
Total	239	213	234

Source: ODE, Office of Data Quality & Governance

**Lakota Local School District
Online Student Enrollment**



Lakota Local School District

OPEN ENROLLMENT

Since 2014-15, the number of Lakota Local School District students “open enrolling” into the District has increased from 159 to 308 students with some fluctuation. The number of students “open enrolling” out of the District has increased from 185 to 234 students with some fluctuation. Significant changes in the number of students “open enrolling” into or out of the District from year to year can impact enrollment projections and should be monitored.

Lakota Local School District
Open Enrollment - IN

Grade	2014-15	2015-16	2016-17	2017-18	2018-19	2019-20	2020-21	2021-22	2022-23	2023-24
Pre-K	0	0	1	1	0	0	0	0	1	0
K	13	7	19	16	10	13	13	12	14	15
1	19	10	17	19	21	15	21	10	13	18
2	9	16	22	31	22	21	18	22	12	15
3	12	16	25	35	28	17	18	17	20	16
4	12	19	32	27	25	27	20	19	10	21
5	6	14	27	44	29	26	24	18	22	15
6	13	10	24	27	51	21	26	23	19	27
7	11	10	18	30	37	40	21	24	24	21
8	11	17	16	29	35	39	38	28	30	25
9	10	13	33	15	38	36	46	47	33	29
10	8	15	22	45	36	43	45	43	53	32
11	16	11	33	33	50	37	51	46	44	33
12	19	25	28	45	40	55	44	51	53	41
Ungraded	0	0	0	0	0	0	0	0	0	0
Grand Total	159	183	317	397	422	390	385	360	348	308

Source: Ohio Department of Education, EMIS; Lakota Local School District

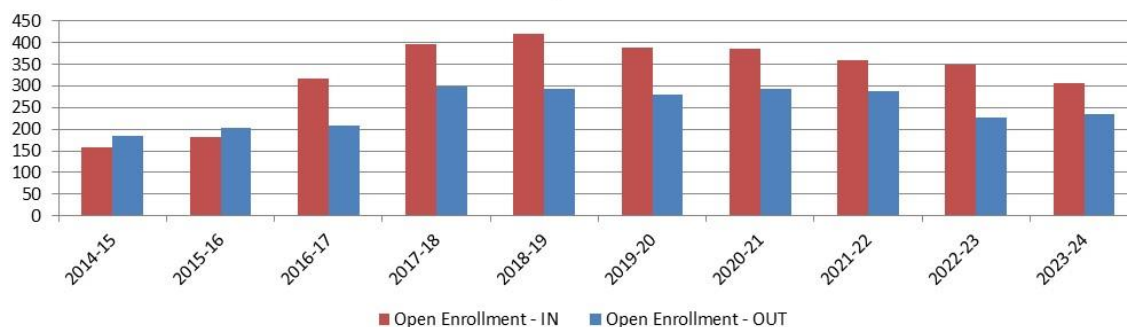
Lakota Local School District

Lakota Local School District Open Enrollment - OUT

Grade	2014-15	2015-16	2016-17	2017-18	2018-19	2019-20	2020-21	2021-22	2022-23	2023-24
Pre-K	0	0	0	0	0	1	2	1	1	1
K	19	17	22	18	12	10	10	17	6	5
1	6	20	17	30	18	15	11	15	14	6
2	17	8	25	23	24	18	21	11	18	16
3	11	16	8	27	26	21	20	19	14	9
4	15	12	16	12	22	20	21	16	13	17
5	10	12	9	20	14	20	20	17	10	10
6	13	11	14	19	19	13	24	19	13	13
7	10	13	8	21	22	25	12	28	18	21
8	11	8	15	15	26	22	28	12	25	21
9	25	13	9	22	20	26	27	32	10	35
10	21	27	16	19	26	25	30	26	31	18
11	17	20	28	28	27	32	34	34	25	30
12	10	25	21	44	37	33	34	40	28	32
Ungraded	0	0	0	0	1	0	0	0	0	0
Grand Total	185	202	208	298	294	281	294	287	226	234

Source: Ohio Department of Education, EMIS; Lakota Local School District

Lakota Local School District Open Enrollment



LIVE BIRTH DATA

Utilization of live birth data is recommended when projecting future kindergarten enrollments as it provides a helpful overall trend. The live birth counts are used in determining a birth-to-kindergarten survival ratio. This ratio identifies the percentage of children born in a representative area who attend kindergarten in the District five years later. The survival ratios for birth-to-kindergarten as well as grades 1-12 can be found later in this report.

The Ohio Department of Health [ODH] information warehouse provides information about live birth events for Ohio residents. Information about events occurring outside of Ohio to Ohio residents is included. Information about events occurring inside Ohio to non-Ohio residents is not included.

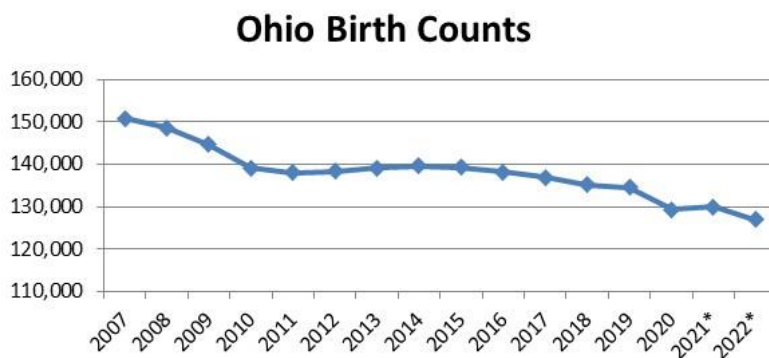
Data is arranged by the residence of the mother. For example, if a mother lives in Powell, Delaware County but delivers her baby in Columbus, Franklin County, the birth is counted in Powell, Delaware County.

The number of live births is recorded by:

- ▶ State
- ▶ County
- ▶ City/Town
- ▶ Census Tract
- ▶ Zip Code
- ▶ Address [not available to the public]

Live birth counts are different from live birth rates. The live birth count is the actual number of live births. A birth rate is the number of births per 1,000 women in a specified population group. Birth rates are provided for counties only and for 9 age groups from 10-14 years to 45+ years.

From 2007 to 2011, Ohio births declined by 12,760 and then somewhat leveled off through 2014. Since 2014, births have dropped each year with a slight uptick from 2020 to 2021. From 2021 to 2022, births declined by almost 3,000 or 2.3 percent.



Lakota Local School District

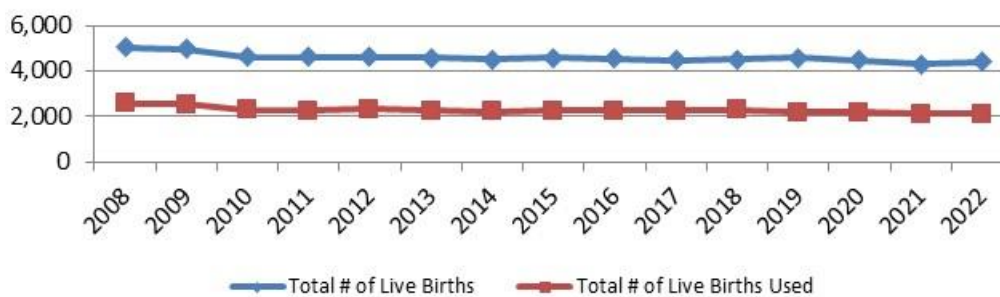
The following table and graph include the live birth counts for several zip codes in the area. However, upon analysis of the map on page 22, only zip codes 45011, 45044, and 45069 were used for projection purposes.

Lakota Local School District
Live Birth Count by Zip Code
2008-2022

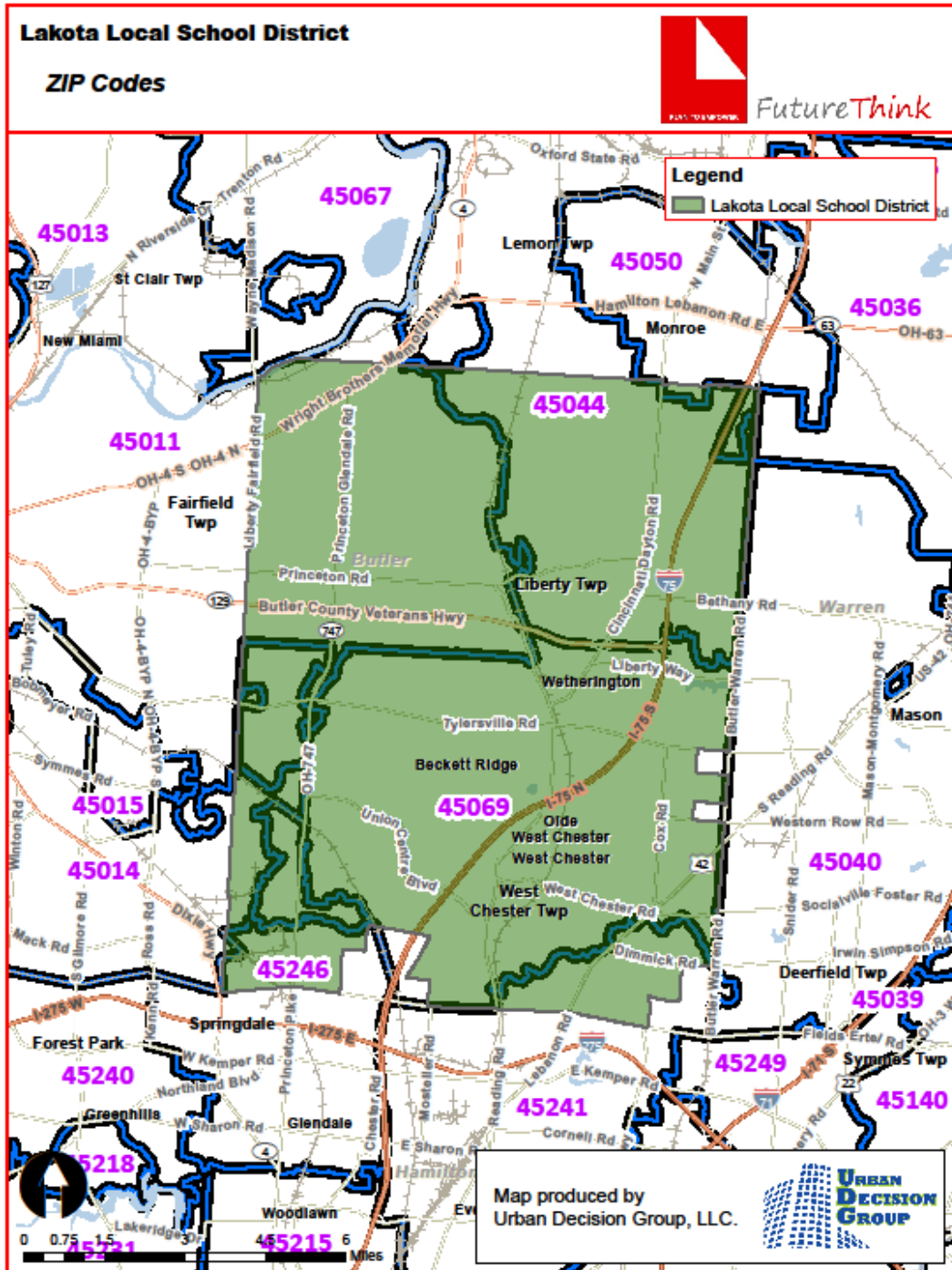
Year	45011	45014	45036	45040	45044	45050	45067	45069	45241	45246	Total # of Live Births	Total # of Live Births Used
2008	1,090	624	419	565	908	136	212	582	261	249	5,046	2,580
2009	1,028	606	428	557	854	141	200	648	257	247	4,966	2,530
2010	912	557	414	502	810	123	192	578	276	252	4,616	2,300
2011	925	532	431	500	782	150	204	566	257	250	4,597	2,273
2012	964	574	410	468	779	161	164	603	259	244	4,626	2,346
2013	890	566	397	487	800	145	176	588	265	259	4,573	2,278
2014	903	580	399	477	683	168	175	638	262	232	4,517	2,224
2015	884	596	358	489	748	155	192	620	263	266	4,571	2,252
2016	920	564	386	480	737	146	198	601	262	242	4,536	2,258
2017	901	536	353	456	763	142	202	607	278	224	4,462	2,271
2018	891	579	352	474	789	142	169	599	278	221	4,494	2,279
2019	864	596	401	496	742	160	184	592	273	272	4,580	2,198
2020	866	577	373	496	720	160	206	590	251	243	4,482	2,176
2021	827	556	389	474	674	135	162	616	260	210	4,303	2,117
2022	835	568	387	504	698	108	194	596	271	237	4,398	2,129

Source: Ohio Department of Health, Public Health Data Warehouse

Lakota Local School District
Live Birth Count by Zip Code



Lakota Local School District



Lakota Local School District

DEMOGRAPHICS

The Lakota Local School District is comprised of Liberty and West Chester townships in Butler County. General demographic data is included in the following tables for the areas located completely or partially in the District.

General Demographic Information

	Butler County	State of Ohio
Per Capita Income	\$37,650	\$37,729
Median Household Income	\$77,062	\$66,990
Persons Below Poverty	11.8%	13.3%

Source: US Census, American Community Survey, 2022 5-Year Estimates

Total Population

	2010 Census	2020 Census
Butler County	332,807	368,130
Liberty Township	22,819	37,259
West Chester Township	54,895	60,958

Source: 2010 Census: DEC Summary File 2; 2020 Decennial Census

Also included are block group estimates and projections provided by ESRI. ESRI uses a time series of estimates from the U.S. Census Bureau that includes the latest estimates and inter-censal estimates adjusted for error of closure. The Census Bureau's time series is consistent, but testing has revealed improved accuracy by using a variety of sources to track county population trends.

ESRI also employs a time series of building permits and housing starts plus residential deliveries. Data sources are integrated and then analyzed by Census Block Groups.

Sources of data include:

- ▶ Supplementary Surveys of the Census Bureau
- ▶ Bureau of Labor Statistics' (BLS) Local Area Unemployment Statistics
- ▶ BLS Occupational Employment Statistics
- ▶ *InfoUSA*
- ▶ U.S. Bureau of the Census' Current Population Survey
- ▶ National Planning Association Data Service

Lakota Local School District

Below is a list of definitions as they appear on the U.S. Census Bureau website, to aid in interpretation of the following tables and maps.

Household:

A household includes all the people who occupy a housing unit as their usual place of residence.

Average family size:

A measure obtained by dividing the number of members of families by the total number of families (or family householders).

Family household (Family):

A family includes a householder and one or more people living in the same household who are related to the householder by birth, marriage, or adoption. All people who are related to the householder are regarded as members of his or her family. A family household may contain people not related to the householder, but those people are not included as part of the householder's family in census tabulations. Thus, the number of family households is equal to the number of families, but family households may include more members than do families. A household can contain only one family for purposes of census tabulations. Not all households contain families since a household may comprise a group of unrelated people or one person living alone.

Householder:

The person, or one of the people, in whose name the home is owned, being bought, or rented. If there is no such person present, any household member 15 years old and over can serve as the householder for the purposes of the census. Two types of householders are distinguished: a family householder and a nonfamily householder. A family householder is a householder living with one or more people related to him or her by birth, marriage, or adoption. The householder and all people in the household related to him are family members. A nonfamily householder is a householder living alone or with nonrelatives only.

Lakota Local School District

The following tables illustrate the current estimates and 5-year population projections based on block groups that comprise the state and school district, indicating areas of current and projected growth. The tables have been developed to determine selected age group projections and projections for household income, family size, and total households.

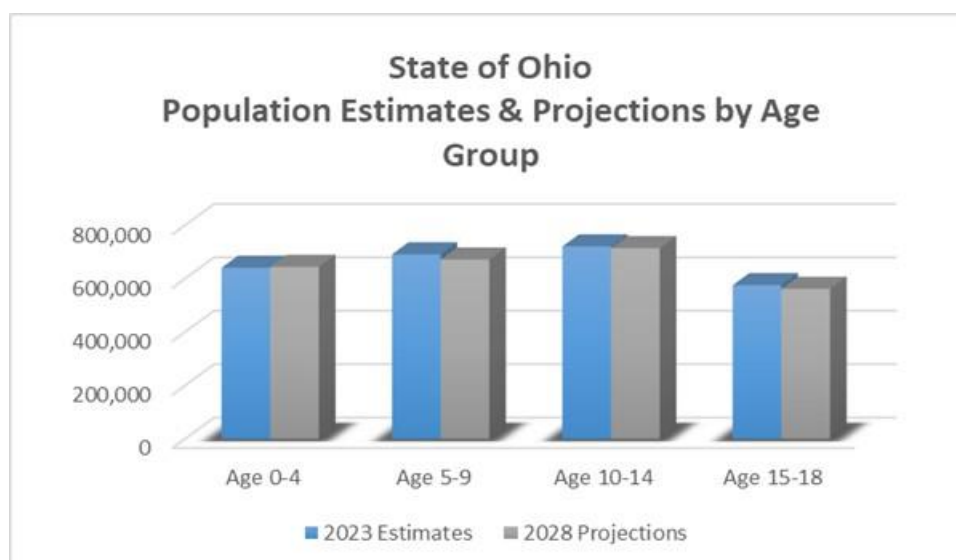
The total population in the State of Ohio is 11,849,266. This population is projected to increase by 1,100 people, or less than 1% over a 5-year period.

The 0-18-year-old population in the State currently totals 2,627,143. This population is projected to decrease by 35,928 children, or approximately 1 percent.

The median age is projected to increase by 2% from 40.8 to 41.6 years of age.

State of Ohio	2023 Estimates	2028 Projections	Change 2023-28	Change 2023-28 (%)
Total Population	11,849,266	11,850,366	1,100	0.0%
Age 0-4	640,713	644,200	3,487	0.5%
Age 5-9	690,743	671,437	-19,306	-2.8%
Age 10-14	720,168	713,978	-6,190	-0.9%
Age 15-18	575,519	561,600	-13,919	-2.4%
Total Age 0-18	2,627,143	2,591,215	-35,928	-1.4%
Median Age	40.8	41.6	0.8	2.0%

Source: ESRI

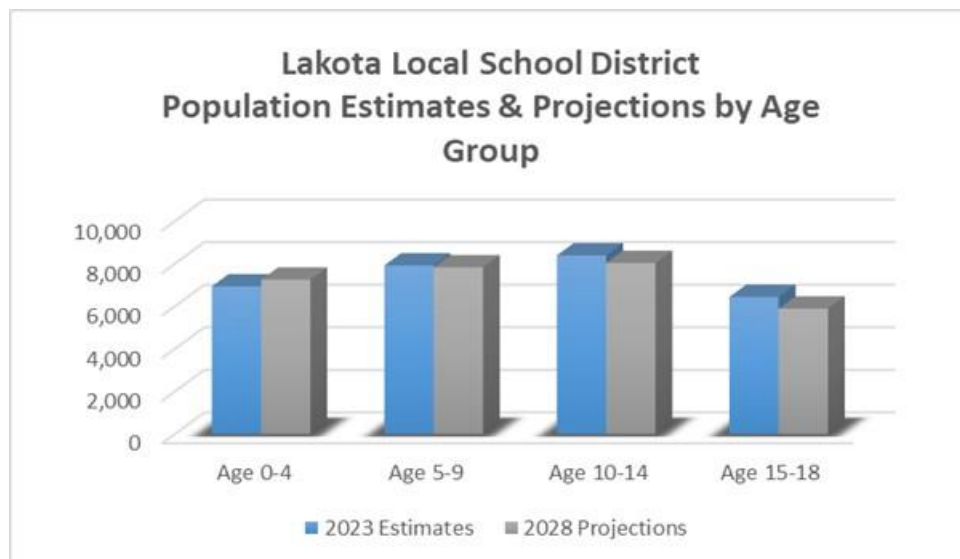


Lakota Local School District

The total population in the District is 107,147. This population is projected to increase by 2,473 people, or approximately 2% over a 5-year period. The 0-18-year-old population in the District currently totals 29,680. This population is projected to decrease by 682 people, or approximately 2 percent. The median age is projected to increase by approximately 1%, from 37.9 to 38.4 years of age.

Lakota Local School District	2023 Estimates	2028 Projections	Change 2023-28	Change 2023-28 (%)
Total Population	107,147	109,620	2,473	2.3%
Age 0-4	6,934	7,249	315	4.5%
Age 5-9	7,918	7,828	-90	-1.1%
Age 10-14	8,389	8,031	-358	-4.3%
Age 15-18	6,439	5,890	-549	-8.5%
Total Age 0-18	29,680	28,998	-682	-2.3%
Median Age	37.9	38.4	0.5	1.3%

Source: ESRI



Lakota Local School District

Median and average household incomes in the State are projected to increase by approximately 16% and 14%, respectively over a 5-year period. The average family size is projected to decrease by 1%, and the total number of family households is projected to increase by less than 1 percent.

State of Ohio	2023 Estimates	2028 Projections	Change 2023-28	Change 2023-28 (%)
Median Household Income	\$63,957	\$74,399	\$10,442	16.3%
Average Household Income	\$92,536	\$105,607	\$13,071	14.1%
Average Family Size	3.00	2.97	-0.03	-1.0%
Total Family Households	3,017,264	3,033,665	16,401	0.5%

Source: ESRI

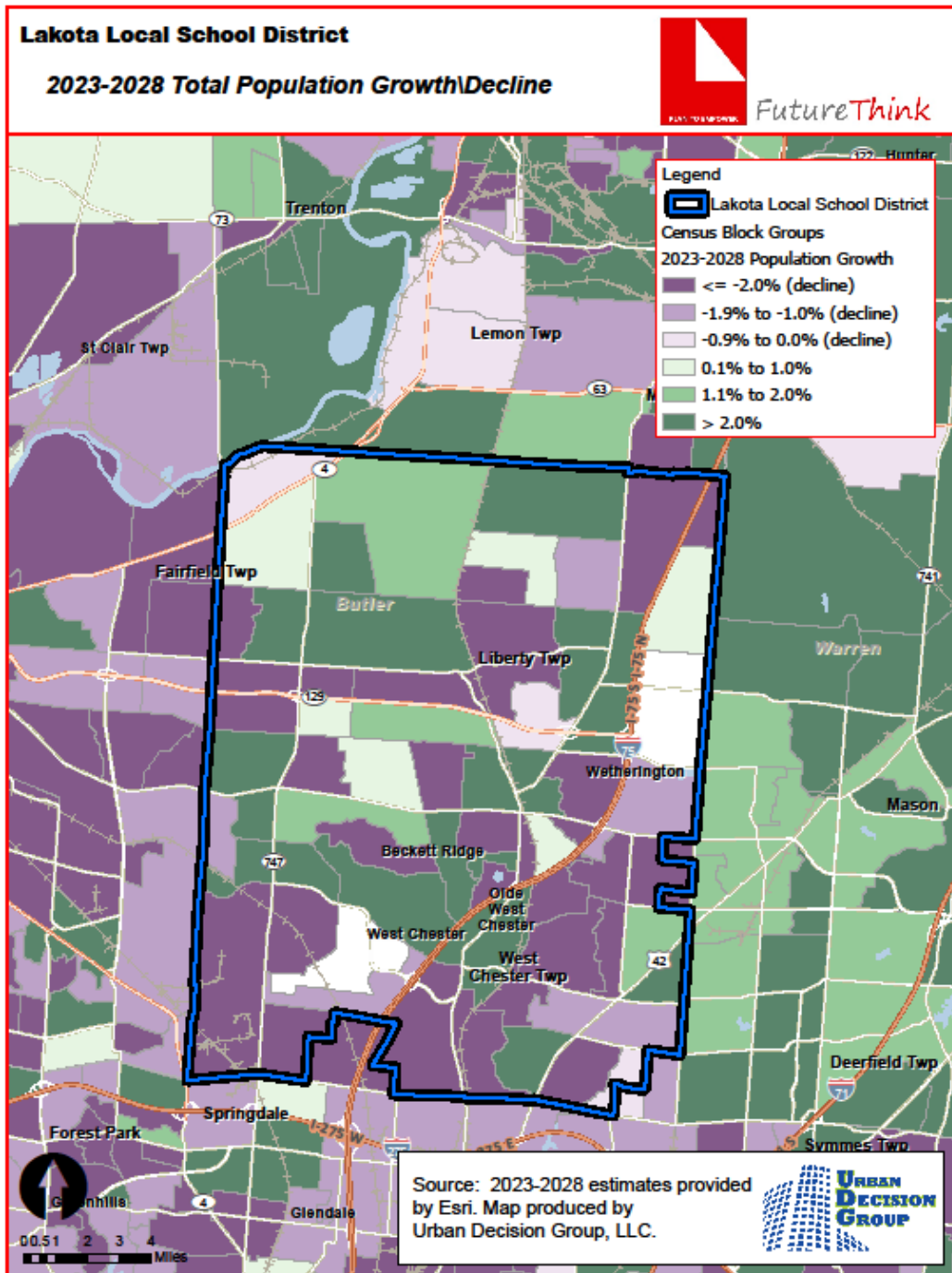
Median and average household incomes in the District are projected to increase by approximately 11% over a 5-year period. The average family size is projected to decrease by approximately 1%, and the total number of family households is projected to increase by approximately 3 percent.

Lakota Local School District	2023 Estimates	2028 Projections	Change 2023-28	Change 2023-28 (%)
Median Household Income	\$118,469	\$131,825	\$13,356	11.3%
Average Household Income	\$152,045	\$168,650	\$16,605	10.9%
Average Family Size	3.19	3.15	-0.04	-1.3%
Total Family Households	29,987	30,864	877	2.9%

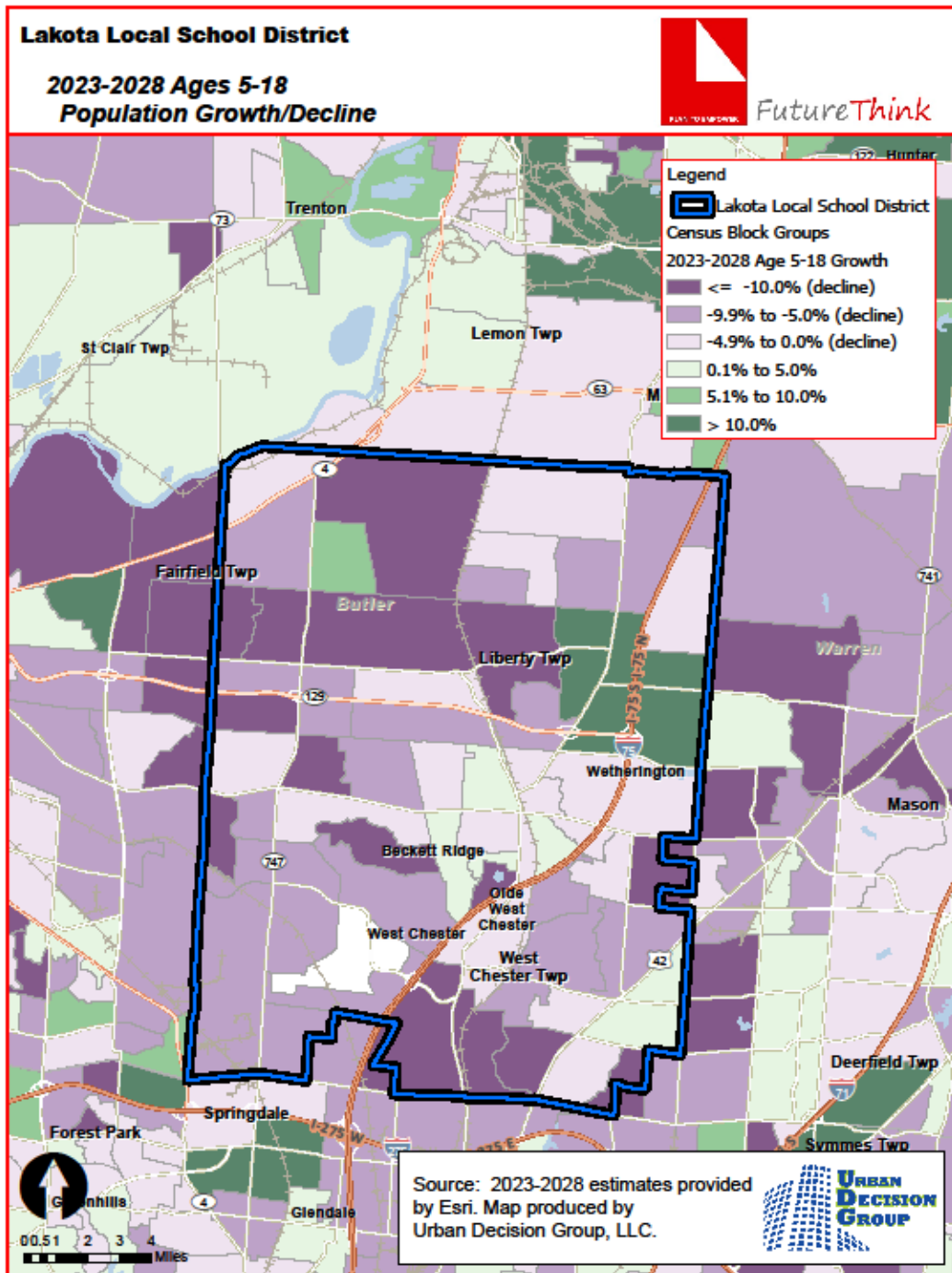
Source: ESRI

The maps on the following pages illustrate the data identified in the tables. The color coding identifies areas within the District that may be increasing or decreasing at different rates than others.

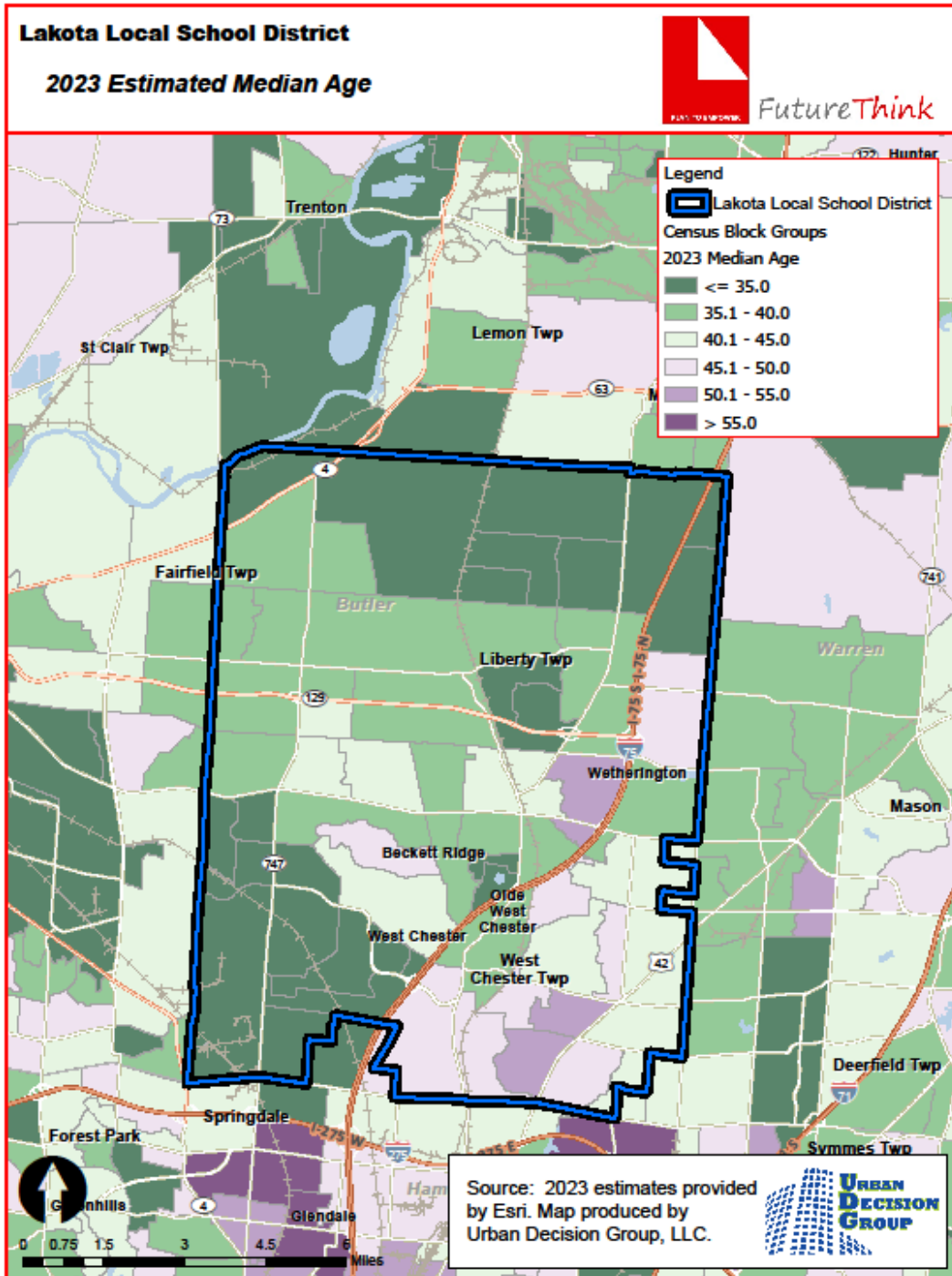
Lakota Local School District



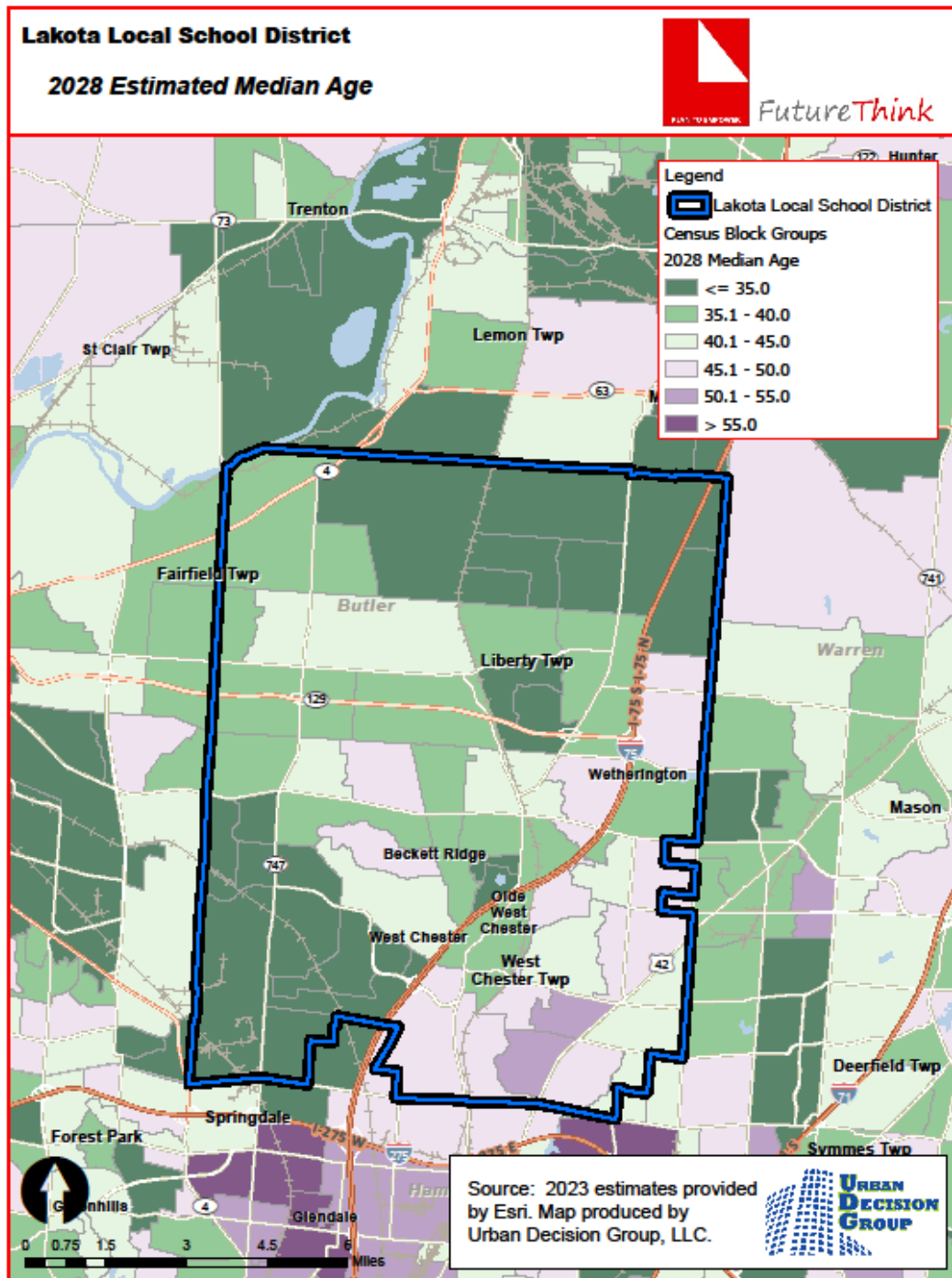
Lakota Local School District



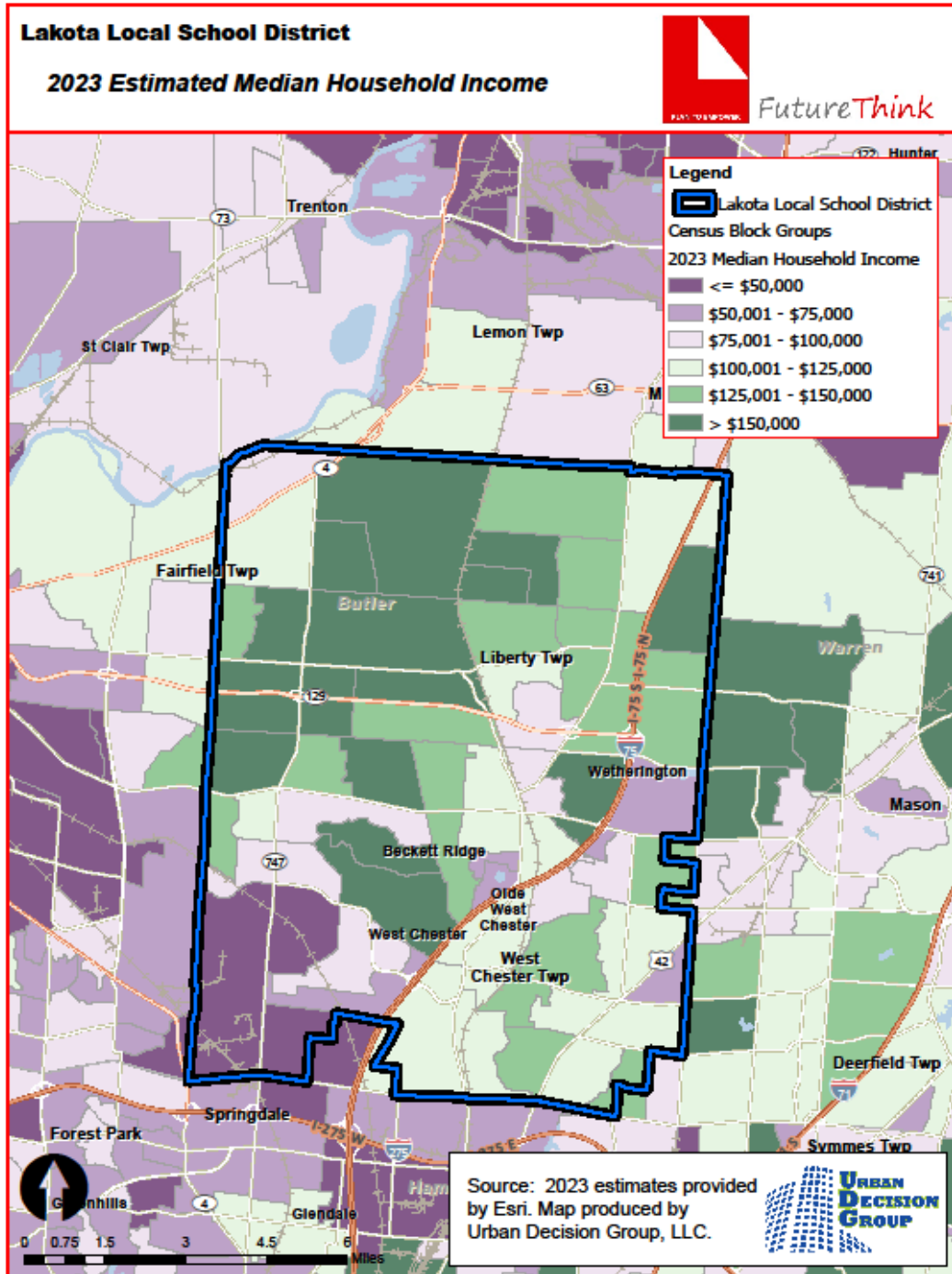
Lakota Local School District



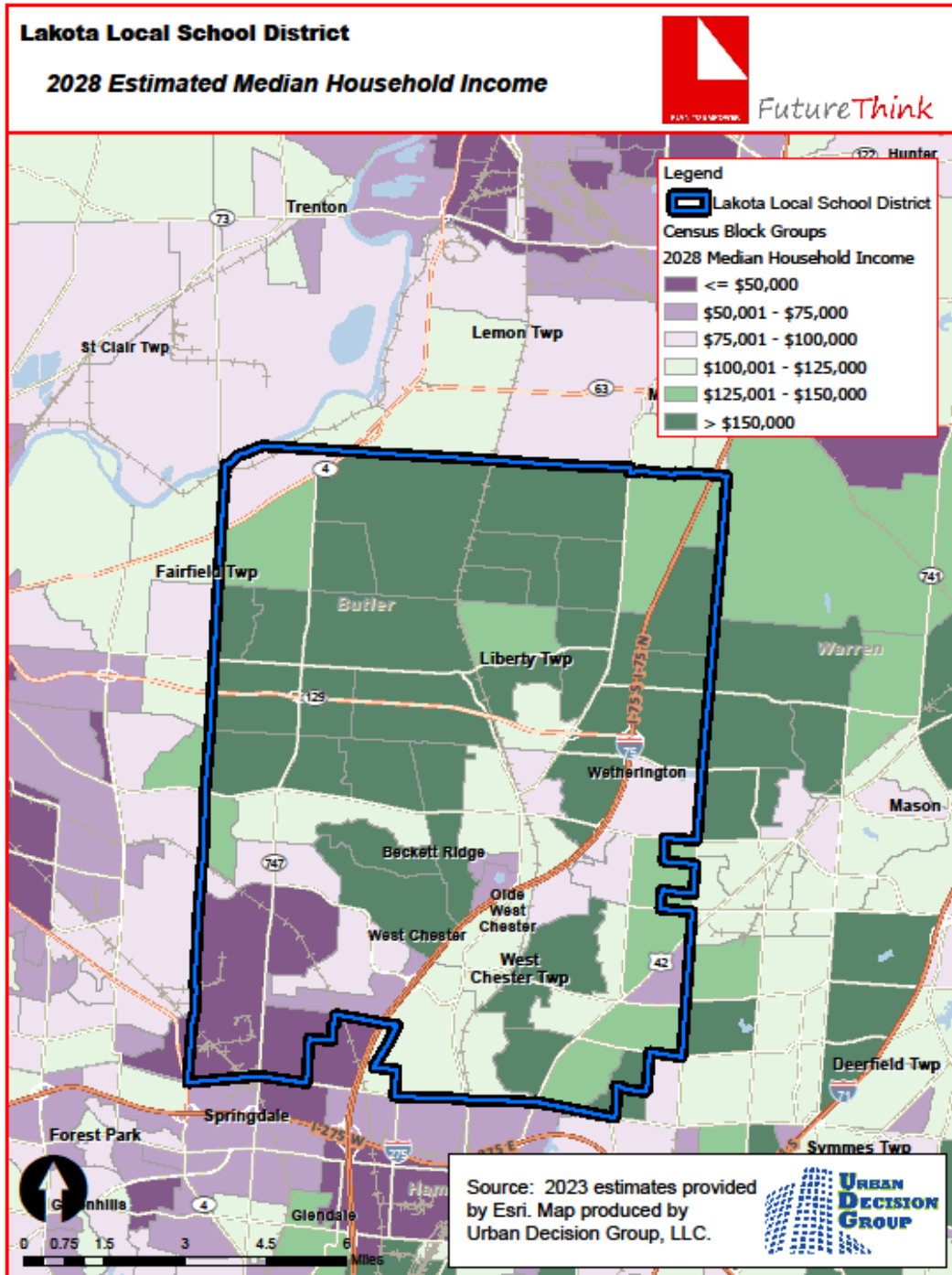
Lakota Local School District



Lakota Local School District



Lakota Local School District



HOUSING INFORMATION

The table below illustrates the number of single-family dwelling building permits issued each year in Butler County.

of Building Permits Issued for Single Family Dwellings

Year	Butler County
2014	583
2015	591
2016	706
2017	737
2018	694
2019	793
2020	1,134
2021	934
2022	799
2023	577
2024*	274

Source: SOCDs Building Permits Database

*preliminary through May 2024

Lakota Local School District

SURVIVAL RATIOS

The chart below demonstrates the changes in enrollment as students move through the system. Percentages greater than 100 indicate that there are more students than there were in the previous grade the previous year. In other words, there was growth and new students entered the system. Percentages less than 100 indicate that there was decline with students leaving the system.

- ▶ Birth to Kindergarten: This ratio indicates the number of children born in the area who attend kindergarten in the District 5 years later. Percentages less than 100% result from movement out of the district, attendance at a non-public or charter school, or residence in another district within the same area.
- ▶ Grades 8-9: The higher than usual percentage often is a result of school district promotion policies. Often in school districts, students are promoted from 8th to 9th grade and after one year in 9th grade do not have sufficient credits to be classified as 10th graders and are counted again as 9th graders the following year. There may also be students who attended private or charter schools or are home schooled through grade 8 and then attend public schools for high school education.

The following table illustrates the survival ratios for the Lakota Local School District.

from	to	birth -> K	K->1	1->2	2->3	3->4	4->5	5->6	6->7	7->8	8->9	9->10	10->11	11->12
2014	2015	41.9%	111.5%	99.8%	104.0%	101.5%	103.2%	101.6%	99.3%	99.4%	97.3%	97.7%	92.4%	92.4%
2015	2016	41.3%	109.5%	101.8%	101.4%	101.3%	100.4%	102.5%	100.1%	101.4%	98.1%	100.4%	94.2%	94.2%
2016	2017	45.7%	114.3%	102.4%	102.0%	101.3%	101.7%	101.8%	98.4%	101.1%	96.6%	100.1%	93.7%	96.7%
2017	2018	56.7%	112.3%	104.0%	107.3%	102.0%	102.7%	101.7%	103.7%	101.7%	100.5%	103.1%	90.8%	96.9%
2018	2019	55.6%	104.6%	102.3%	103.5%	101.0%	104.0%	105.9%	103.3%	102.8%	97.1%	103.5%	90.8%	97.7%
2019	2020	54.2%	107.9%	104.7%	105.8%	106.8%	107.6%	107.7%	105.0%	104.7%	101.2%	103.2%	92.2%	101.3%
2020	2021	57.6%	107.4%	101.7%	100.1%	103.3%	102.0%	102.2%	100.9%	103.1%	101.6%	98.3%	90.7%	98.0%
2021	2022	57.7%	106.0%	101.2%	102.9%	102.4%	101.3%	102.9%	104.3%	99.7%	103.7%	99.0%	92.5%	100.2%
2022	2023	53.7%	101.0%	99.6%	101.7%	100.0%	101.4%	102.1%	102.1%	101.9%	105.1%	99.9%	102.9%	107.1%
	average	51.59%	108.291%	101.95%	103.2%	102.18%	102.7%	103.1%	101.9%	101.8%	100.126%	100.585%	93.358%	98.263%
	standard deviation	6.341%	3.903%	1.578%	2.145%	1.835%	2.002%	2.022%	2.214%	1.551%	2.873%	2.062%	3.564%	4.045%

ENROLLMENT PROJECTION

Enrollment projections were developed after analyzing the data collected in this report. The projections indicate an increase of 802 students in grades Pre-K through 12, not including regular Pre-K or full-time JVS students, from the 2023-24 to the 2033-34 school year. The following tables and graph illustrate projected enrollments by grade and by grade group through the 2033-34 school year.

Preschool:

The Ohio School Design Manual [OSDM] provides space for preschool students with disabilities and a maximum of 40 ECE preschool students. The Lakota Local School District funds preschool through the following sources:

- General fund
- Tuition

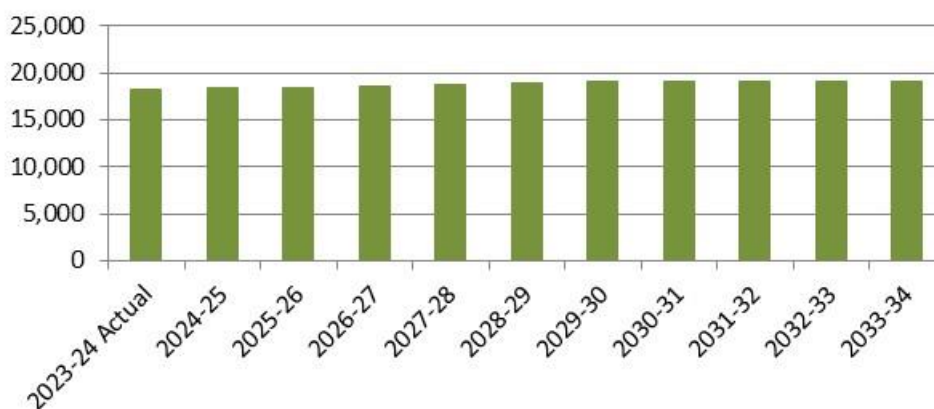
Kindergarten:

The OSDM provides space for all day, every day kindergarten.

Career Technical:

Due to the specialized space requirements, career technical students are pulled out of the 11th and 12th grade enrollments and projected separately.

**Lakota Local School District
Projected Enrollment**



Lakota Local School District

Lakota Local School District Projected Enrollment

Grade	2023-24 Actual	2024-25	2025-26	2026-27	2027-28	2028-29	2029-30	2030-31	2031-32	2032-33	2033-34
Pre-K (special needs)	333	341	338	329	331	334	334	334	334	334	334
K	1,223	1,251	1,239	1,205	1,212	1,226	1,226	1,226	1,226	1,226	1,226
1	1,324	1,319	1,349	1,336	1,299	1,307	1,322	1,322	1,322	1,322	1,322
2	1,374	1,349	1,344	1,375	1,361	1,324	1,332	1,347	1,347	1,347	1,347
3	1,349	1,410	1,384	1,379	1,410	1,396	1,358	1,366	1,382	1,382	1,382
4	1,396	1,367	1,428	1,402	1,397	1,428	1,414	1,376	1,383	1,400	1,400
5	1,470	1,419	1,389	1,451	1,425	1,419	1,451	1,437	1,398	1,406	1,423
6	1,393	1,506	1,453	1,423	1,486	1,459	1,454	1,486	1,472	1,432	1,440
7	1,320	1,436	1,552	1,498	1,466	1,532	1,504	1,498	1,532	1,517	1,475
8	1,370	1,341	1,458	1,576	1,521	1,489	1,555	1,527	1,521	1,556	1,540
9	1,466	1,431	1,400	1,523	1,646	1,588	1,554	1,624	1,594	1,588	1,624
10	1,417	1,464	1,428	1,398	1,520	1,643	1,585	1,552	1,621	1,592	1,586
11	1,504	1,307	1,350	1,317	1,288	1,401	1,514	1,461	1,430	1,494	1,467
12	1,297	1,481	1,286	1,329	1,296	1,268	1,379	1,491	1,439	1,408	1,471
Pre-K - 12 Total	18,236	18,422	18,398	18,541	18,658	18,814	18,982	19,047	19,001	19,004	19,037
Ungraded	36	37	37	37	37	37	38	38	38	37	37
Grand Total	18,272	18,459	18,435	18,578	18,695	18,851	19,020	19,085	19,039	19,041	19,074

Source: FutureThink

Lakota Local School District Projected Enrollment by Grade Group

Grade	2023-24 Actual	2024-25	2025-26	2026-27	2027-28	2028-29	2029-30	2030-31	2031-32	2032-33	2033-34
Pre-K (special needs)	333	341	338	329	331	334	334	334	334	334	334
K - 2	3,921	3,919	3,932	3,916	3,872	3,857	3,880	3,895	3,895	3,895	3,895
3 - 6	5,608	5,702	5,654	5,655	5,718	5,702	5,677	5,665	5,635	5,620	5,645
7 - 8	2,690	2,777	3,010	3,074	2,987	3,021	3,059	3,025	3,053	3,073	3,015
9	1,466	1,431	1,400	1,523	1,646	1,588	1,554	1,624	1,594	1,588	1,624
10 - 12	4,218	4,252	4,064	4,044	4,104	4,312	4,478	4,504	4,490	4,494	4,524
Pre-K - 12 Total	18,236	18,422	18,398	18,541	18,658	18,814	18,982	19,047	19,001	19,004	19,037
Ungraded	36	37	37	37	37	37	38	38	38	37	37
Grand Total	18,272	18,459	18,435	18,578	18,695	18,851	19,020	19,085	19,039	19,041	19,074

Source: FutureThink

CONCLUSION

As with any projection, the District should pay close attention to live birth counts, enrollment in elementary schools, community school enrollment, open enrollment, and any housing growth. Each of these factors will have an impact on future student enrollment.

FutureThink is pleased to have had the opportunity to provide the District with enrollment projection services. We hope this document will provide the necessary information to make informed decisions about the future of the Lakota Local School District.

APPENDIX

The following documents are included in the appendix:

- District Acceptance
- District Questionnaire

The August 2020 Enrollment Projection Report is available upon request.



Tracy Healy <thealy@futurethinkinc.com>

Lakota LSD (Butler) DRAFT Enrollment Projection Report

Ashley Whitely <ashley.whitely@lakotaonline.com>

Tue, Jul 30, 2024 at 8:44 AM

To: Tracy Healy <thealy@futurethinkinc.com>, Chris Passarge <chris.passarge@lakotaonline.com>

Cc: "Drerup, Melanie" <Melanie.Drerup@ofcc.ohio.gov>, "Parker, Janice" <Janice.Parker@ofcc.ohio.gov>, "Joseph.macneil@ofcc.ohio.gov" <Joseph.Macneil@ofcc.ohio.gov>, Valerie Montoya <Valerie.Montoya@ofcc.ohio.gov>, "Joseph.DiOrio@ofcc.ohio.gov" <Joseph.DiOrio@ofcc.ohio.gov>, "Chris.Bruner@ofcc.ohio.gov" <Chris.Bruner@ofcc.ohio.gov>, "Paul.Mann@ofcc.ohio.gov" <Paul.Mann@ofcc.ohio.gov>, "tyler.palmer@ofcc.ohio.gov" <Tyler.Palmer@ofcc.ohio.gov>

Tracy,

I am approving the enrollment projection reports.

Thanks,

Ashley Whitely

From: Tracy Healy <thealy@futurethinkinc.com>**Sent:** Wednesday, July 10, 2024 2:33 PM**To:** Ashley Whitely <ashley.whitely@lakotaonline.com>; Chris Passarge <chris.passarge@lakotaonline.com>**Cc:** Drerup, Melanie <Melanie.Drerup@ofcc.ohio.gov>; Parker, Janice <Janice.Parker@ofcc.ohio.gov>;

joseph.macneil@ofcc.ohio.gov; Valerie Montoya <Valerie.Montoya@ofcc.ohio.gov>;

Joseph.DiOrio@ofcc.ohio.gov; Chris.Bruner@ofcc.ohio.gov; Paul.Mann@ofcc.ohio.gov;

tyler.palmer@ofcc.ohio.gov

Subject: Lakota LSD (Butler) DRAFT Enrollment Projection ReportYou don't often get email from thealy@futurethinkinc.com. [Learn why this is important](#)

[EXTERNAL SENDER] Please do not click links or open attachments unless you recognize the source of this email and know the content is safe.

Dear Supt. Whitely,

[Quoted text hidden]

[Quoted text hidden]

District Questionnaire for Lakota Local of Butler County (46110) [Thealy]

District Questionnaire has been submitted for review

Enrollment Report For Lakota Local of Butler County (46110)**Contact Information**

Superintendent Name:	Ashley Whitely
Superintendent Email:	ashley.whitely@lakotaonline.com
Superintendent Phone:	(513) 874-5505
Contact Name (if different from Superintendent):	Chris Passarge
Contact Title:	Chief Operations Officer
Contact Email:	chris.passarge@lakotaonline.com
Contact Phone:	(513) 874-5505

K12 Enrollment

Grade	Enrolled 2014– 2015	Enrolled 2015– 2016	Enrolled 2016– 2017	Enrolled 2017– 2018	Enrolled 2018– 2019	Enrolled 2019– 2020	Enrolled 2020– 2021	Enrolled 2021– 2022	Enrolled 2022– 2023	Enrolled 2023– 2024
K	1048	964	938	1072	1291	1236	1221	1301	1311	1223
1	1135	1169	1056	1072	1204	1351	1334	1311	1379	1324
2	1234	1133	1190	1081	1115	1232	1414	1357	1327	1374
3	1188	1283	1149	1214	1160	1154	1304	1415	1396	1349
4	1266	1206	1300	1164	1238	1172	1232	1347	1449	1396
5	1299	1306	1211	1322	1195	1287	1261	1257	1364	1470
6	1296	1320	1338	1233	1344	1265	1386	1289	1293	1393
7	1353	1287	1321	1316	1279	1389	1328	1399	1344	1320
8	1402	1345	1305	1336	1339	1315	1454	1369	1395	1370
9	1238	1364	1319	1261	1343	1300	1331	1477	1419	1466
10	1325	1210	1370	1320	1300	1390	1342	1309	1462	1417
11	1192	1224	1140	1284	1199	1181	1281	1217	1211	1504
12	1051	1101	1153	1102	1244	1171	1196	1255	1220	1297
Ungraded	44	42	35	51	51	0	0	0	0	36
Total	16071	15954	15825	15828	16302	16443	17084	17303	17570	17939

All Day Kindergarten

Do you offer kindergarten to all students, all day, every day?
--

yes

Preschool Enrollment

Do you **house** Preschool/Pre-K students in your facilities, **including** Pre-K students in a program run by an ESC or other agency?

yes

Please select your district's preschool funding sources:
General Fund Tuition

Early Childhood Education (ECE) grant funding (known as entitlement and public preschool) is distributed by the Ohio Department of Education to districts to provide preschool services for 3- and 4-year old children of income eligible families.

Do you house Early Childhood Education (ECE) students in your facilities?
no

Do you house Pre-K students with disabilities in your facilities?
yes

Please provide enrollment data:

Grade	2014–2015	2015–2016	2016–2017	2017–2018	2018–2019	2019–2020	2020–2021	2021–2022	2022–2023	2023–2024
Pre-K with disabilities	140	139	139	143	129	156	239	293	305	333

Do you house other Pre-K students in your facilities that are not students with disabilities and are not enrolled in ECE, or Federal Head Start (e.g., tuition-based or funded with other sources)?

yes

Please provide enrollment data:

Grade	2014–2015	2015–2016	2016–2017	2017–2018	2018–2019	2019–2020	2020–2021	2021–2022	2022–2023	2023–2024
Pre-K Other (not disabled, not enrolled in ECE, or Federal Head Start)	93	91	159	150	145	152	132	219	214	179

Student Teacher Ratios

What are your district's current average student to teacher ratios for the following grade groups?

Include core teachers only.

- K–3 24 to 1
- 4–5 26 to 1
- 6–8 28 to 1
- 9–12 28 to 1

Grade Configurations

PK through PK
 K through 2
 3 through 6
 7 through 8
 9 through 9
 10 through 12

Students with Disabilities

Definitions:

- **IE13** — Special Education outside the regular class less than 21% of the day.
- **IE14** — Special Education outside the regular class at least 21% of the day and no more than 60% of the day.
- **IE15** — Special Education outside the regular class more than 60% of the day.

Please provide the current school year enrollment for students with disabilities by ODE program code and grade configuration.

Code	PK-PK	K-2	3-6	7-8	9-9	10-12
IE13	0	7	2	6	2	7
IE14	2	2	0	0	1	2
IE15	12	75	196	89	56	155
Total	14	84	198	95	59	164

*These students should be included in the October headcount

Does your District house additional students with disabilities from other school districts? (i.e., county programs, etc.) no

Community Enrollment

Grade	Enrolled 2014-2015	Enrolled 2015-2016	Enrolled 2016-2017	Enrolled 2017-2018	Enrolled 2018-2019	Enrolled 2019-2020	Enrolled 2020-2021	Enrolled 2021-2022	Enrolled 2022-2023	Enrolled 2023-2024
PreK	0	0	0	0	0	0	0	0	0	0
K	12	3	5	8	8	7	34	17	36	34
1	12	10	7	3	6	5	23	8	24	8
2	9	9	5	5	4	5	20	11	18	6
3	11	11	7	7	7	3	22	10	14	6
4	14	7	11	6	9	10	16	13	15	14
5	12	13	7	15	7	9	27	15	20	10
6	12	11	15	10	10	7	20	22	12	16
7	15	11	13	17	11	11	21	14	19	7
8	19	27	16	20	11	12	26	23	30	24
9	31	36	29	24	31	19	34	29	29	28
10	37	35	31	37	22	33	29	38	30	23
11	40	46	31	30	36	24	35	29	38	20
12	39	36	52	41	31	29	34	33	25	18
Ungraded	0	0	0	0	0	0	0	0	0	0
Total	263	255	229	223	193	174	341	262	310	214

Online Enrollment

Grade	Enrolled 2014– 2015	Enrolled 2015– 2016	Enrolled 2016– 2017	Enrolled 2017– 2018	Enrolled 2018– 2019	Enrolled 2019– 2020	Enrolled 2020– 2021	Enrolled 2021– 2022	Enrolled 2022– 2023	Enrolled 2023– 2024
PreK	0	0	0	0	0	0	0	0	0	0
K	0	0	0	0	0	0	0	14	13	34
1	0	0	0	0	0	0	0	8	9	8
2	0	0	0	0	0	0	0	9	7	6
3	0	0	0	0	0	0	0	9	5	6
4	0	0	0	0	0	0	0	12	8	14
5	0	0	0	0	0	0	0	13	11	10
6	0	0	0	0	0	0	0	21	4	16
7	0	0	0	0	0	0	0	13	19	7
8	0	0	0	0	0	0	0	22	29	24
9	0	0	0	0	0	0	0	27	29	30
10	0	0	0	0	0	0	0	36	28	33
11	0	0	0	0	0	0	0	28	31	22
12	0	0	0	0	0	0	0	27	20	24
Ungraded	0	0	0	0	0	0	0	0	0	0
Total	0	0	0	0	0	0	0	239	213	234

Open Enrollment (In)

Grade	Enrolled 2014– 2015	Enrolled 2015– 2016	Enrolled 2016– 2017	Enrolled 2017– 2018	Enrolled 2018– 2019	Enrolled 2019– 2020	Enrolled 2020– 2021	Enrolled 2021– 2022	Enrolled 2022– 2023	Enrolled 2023– 2024
Prek	0	0	1	1	0	0	0	0	1	0
K	13	7	19	16	10	13	13	12	14	15
1	19	10	17	19	21	15	21	10	13	18
2	9	16	22	31	22	21	18	22	12	15
3	12	16	25	35	28	17	18	17	20	16
4	12	19	32	27	25	27	20	19	10	21
5	6	14	27	44	29	26	24	18	22	15
6	13	10	24	27	51	21	26	23	19	27
7	11	10	18	30	37	40	21	24	24	21
8	11	17	16	29	35	39	38	28	30	25
9	10	13	33	15	38	36	46	47	33	29
10	8	15	22	45	36	43	45	43	53	32
11	16	11	33	33	50	37	51	46	44	33
12	19	25	28	45	40	55	44	51	53	41
Ungraded	0	0	0	0	0	0	0	0	0	0
Total	159	183	317	397	422	390	385	360	348	308

Open Enrollment (Out)

Grade	Enrolled 2014–2015	Enrolled 2015–2016	Enrolled 2016–2017	Enrolled 2017–2018	Enrolled 2018–2019	Enrolled 2019–2020	Enrolled 2020–2021	Enrolled 2021–2022	Enrolled 2022–2023	Enrolled 2023–2024
Prek	0	0	0	0	0	1	2	1	1	1
K	19	17	22	18	12	10	10	17	6	5
1	6	20	17	30	18	15	11	15	14	6
2	17	8	25	23	24	18	21	11	18	16
3	11	16	8	27	26	21	20	19	14	9
4	15	12	16	12	22	20	21	16	13	17
5	10	12	9	20	14	20	20	17	10	10
6	13	11	14	19	19	13	24	19	13	13
7	10	13	8	21	22	25	12	28	18	21
8	11	8	15	15	26	22	28	12	25	21
9	25	13	9	22	20	26	27	32	10	35
10	21	27	16	19	26	25	30	26	31	18
11	17	20	28	28	27	32	34	34	25	30
12	10	25	21	44	37	33	34	40	28	32
Ungraded	0	0	0	0	1	0	0	0	0	0
Total	185	202	208	298	294	281	294	287	226	234

JVS Enrollment

Does your District belong to a JVSD? yes

Please select the JVSD your District belongs to: Butler Technology & Career Development Schools

Please provide enrollment for students attending JVS (or "Other") full or half-time.

Grade	Enrolled 2014–2015	Enrolled 2015–2016	Enrolled 2016–2017	Enrolled 2017–2018	Enrolled 2018–2019	Enrolled 2019–2020	Enrolled 2020–2021	Enrolled 2021–2022	Enrolled 2022–2023	Enrolled 2023–2024
Full Time 11	132	160	166	138	108	114	120	114	138	124
Full Time 12	185	185	185	107	102	79	98	103	105	126
Total	317	345	351	245	210	193	218	217	243	250

Grade	Enrolled 2014–2015	Enrolled 2015–2016	Enrolled 2016–2017	Enrolled 2017–2018	Enrolled 2018–2019	Enrolled 2019–2020	Enrolled 2020–2021	Enrolled 2021–2022	Enrolled 2022–2023	Enrolled 2023–2024
Half Time 11	0	0	0	0	0	0	0	0	0	0
Half Time 12	0	0	0	0	0	0	0	0	0	0
Total	0	0	0	0	0	0	0	0	0	0

Career Technical Compact Enrollment

Does your District belong to a Compact? no

Career Tech Program Enrollment

Include only those students who are considered "concentrators" or enrolled in a "pathway". Do NOT include students who are just taking one course.

Comprehensive Career Tech: Students who attend academics and career technical programs in your district.

On-Site Career Tech: Students who attend academics in another district but attend career technical programs in your district.

Satellite JVSD: Same as Comprehensive Career Tech, but the program is sponsored and/or administered by the JVS District and housed by your District.

Boundaries

Please list municipalities, townships, and any additional counties within the boundaries of your school district: West Chester Township Liberty Township

Has your District experienced changes in District-wide boundaries since 2004? no

Growth

Do you expect significant growth in your District over the next 10 years? yes

Liberty Township anticipates their population will double over the next 20 years

Additional Information

Please provide any additional information you feel may impact your District's future enrollment [i.e. private schools opening or closing]

Submission Documents

The following are additional documents which may be useful in projecting your District's enrollment. Please check any documents you intend to provide for consideration and forward documents to:

Tracy Healy (thealy@futurethinkinc.com)

or

Future Think Inc.

5685 Tynecastle Loop

Dublin, 43016

Return To District Print Report

Please contact Tracy Healy (thealy@futurethinkinc.com, 614-264-2638) with any questions or concerns regarding the District Questionnaire.