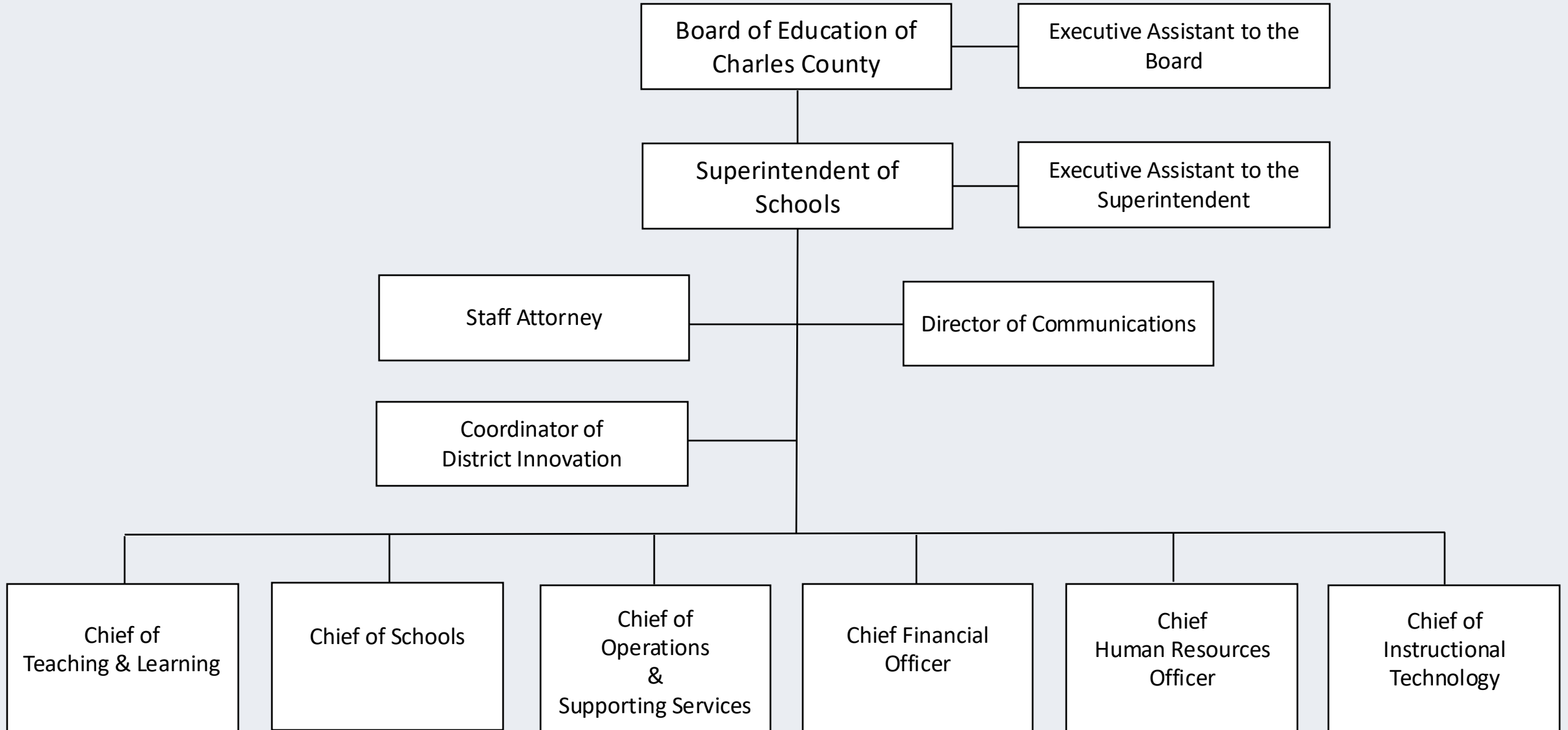


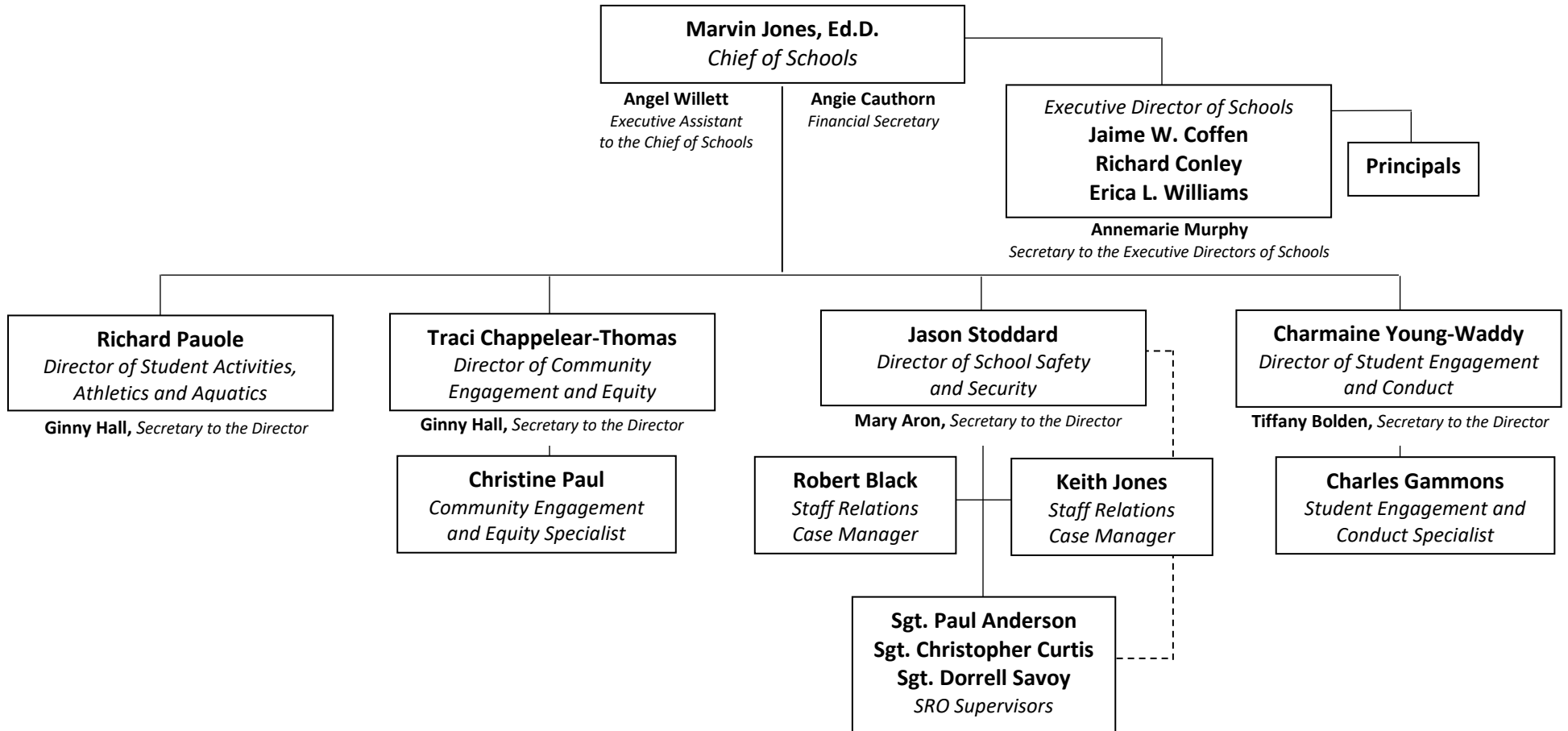


Charles County Public Schools Organizational Chart

SY 2024-2025



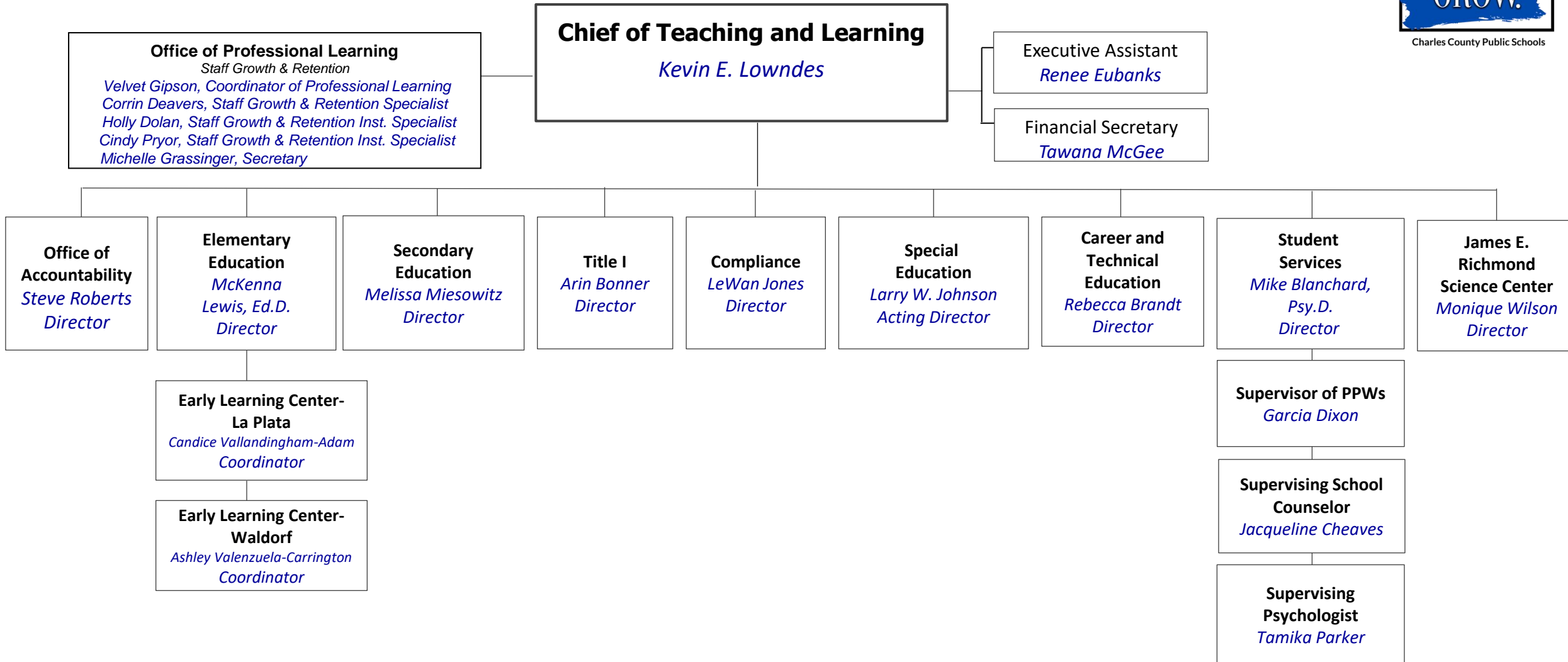
Office of School Administration and Leadership



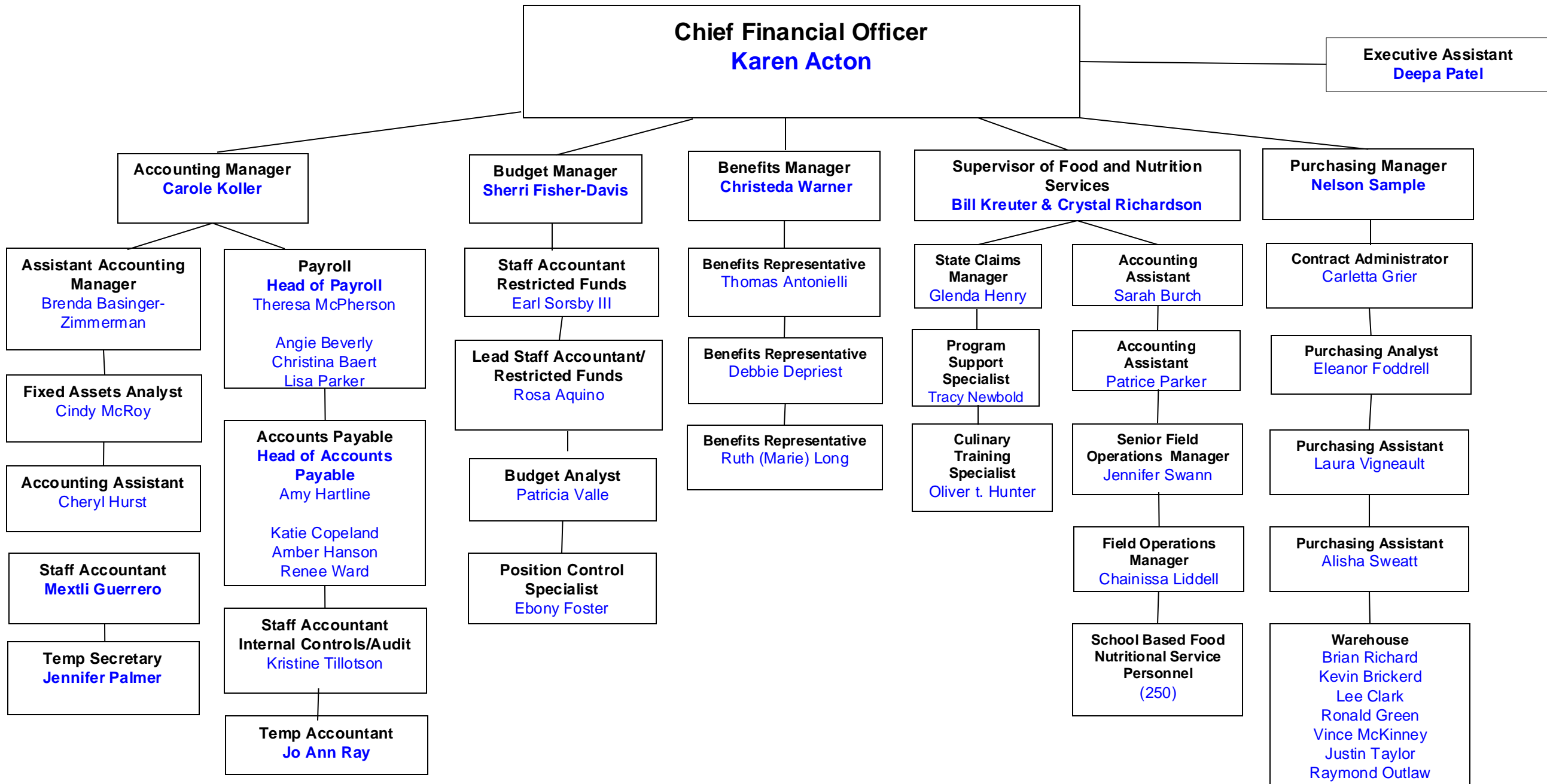
OFFICE OF TEACHING AND LEARNING



Charles County Public Schools



OFFICE OF FISCAL SERVICES ORGANIZATIONAL CHART



**OFFICE OF HUMAN RESOURCES
ORGANIZATIONAL CHART**

**NIKIAL MAJORS
CHIEF HUMAN RESOURCES OFFICER**

**DIANA COLOMO
Executive Assistant**

**David Shimizu
HRIS & Compensation Manager**

**Shirlene Ogburn
Supervisor of Employee Services**

**Kevin Howard
Supervisor Human Resources**

**Teresa Absalon
Tracie Mattera
Linda Henderson
HR Assistant**

**Louise Evans
Michelle Ezzell
HR Assistant**

**Jeremy Campbell
Specialist**

**Charvonne Hill
Specialist**

**Mieya Crosby
Specialist**

**Sarah Fortune
Specialist**

**Barbara Simmons
Jill Rechord-Monegain
CAP**

**Tanya Williams
Generalist**

**Vacant
HR Assistant**

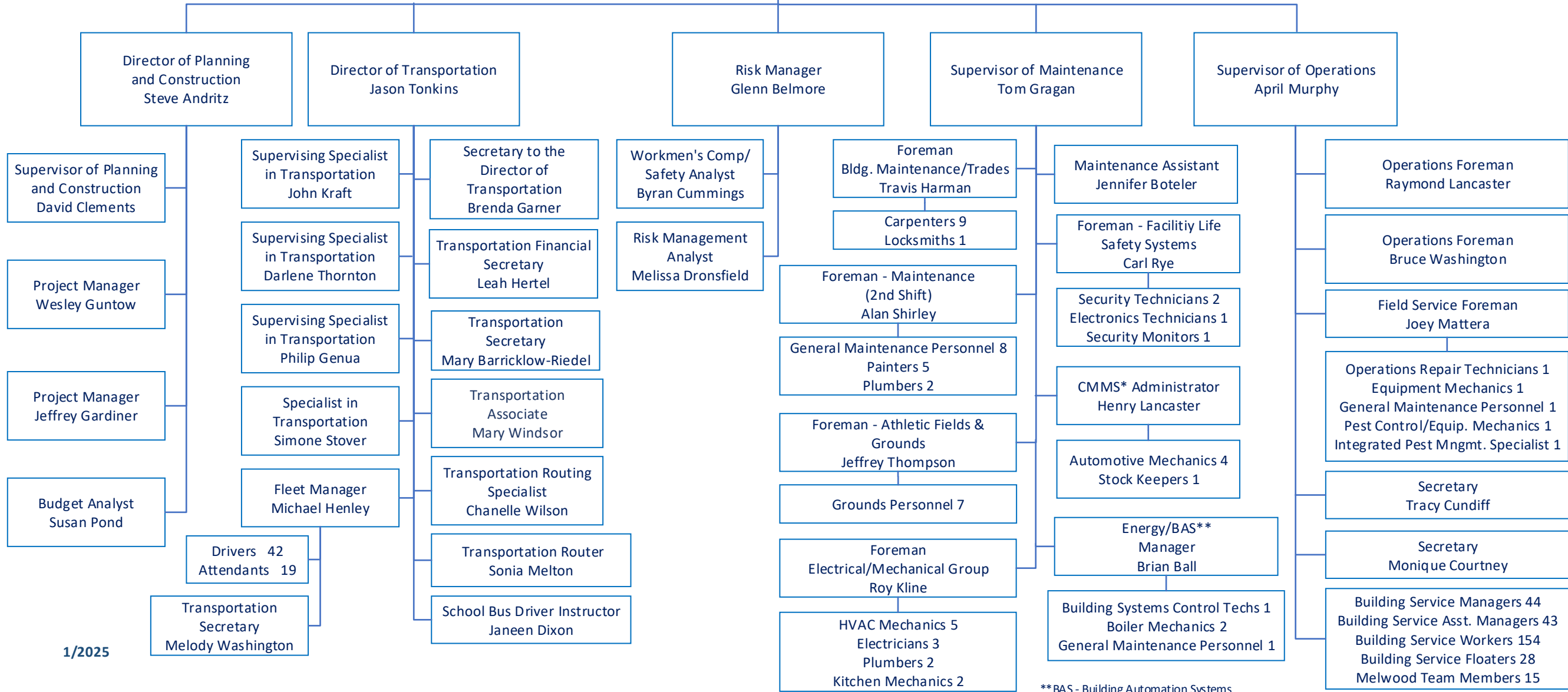
**LaTasha Hall
Generalist**

**Lacen Dement
HR Assistant**

**Christi Kober
CAPA**

**Angela Rogers
Cert. Assistant**

Charles County Public Schools - Operations & Supporting Services



1/2025

**BAS - Building Automation Systems
*CMMS - Computerized Maintenance Management System



Charles County Public Schools

Office of Technology

Organizational Chart

