



HUES Counseling Handout

Fall 2024-2025

Who Is Your Child's Counselor?

School Counselor

- ❑ Taylor Heitzhaus X6662
- ❑ Stephanie Schweighardt X6848
- ❑ Maryam Srouji x 6847

Student Assistance Specialists: 504 Coordinator, HIB Specialists

- ❑ Jessica Orapallo (5th Grade) x6879
- ❑ Jenna Ruditsky (6th Grade) x6619

SCHOOL COUNSELOR & STUDENT ASSISTANCE SPECIALIST SUPPORTS

A google form will be available for you to select a group you would like to join and/or make an appointment with your counselor.

Individual Counseling:

Managing Stress/Anxiety
Organization/Study Skills
Forming friendships
Family worries
School work concerns
Feelings of sadness

Counseling Groups:

New Student
Changing Families
Stress Management
Study Skills
Boys and Girls Friendship Group

Clubs & Activities



HAMMARSKJOLD UPPER ELEMENTARY SCHOOL CLUBS

CLUB	ADVISOR	MEETING DAY	MEETING TIME	ROOM
ACADEMIC CHALLENGERS	MR. BONDI/ MS. LEACH	WEDNESDAY	3:45 PM	1702
ART CLUB	MS. BARRETT/MS. KULIK	WEDNESDAY & THURSDAY	3:45 PM	Wed - 1106 Thurs - 1108
BAND (6TH)	MS. NICHOLS	T/W/TH	varies as needed	1524/JMPAC
BAND (5TH)	MS. VANZINI	T/W/TH	varies as needed	1524/JMPAC
BUDDY SPORTS	MS. MORGEN/MR. LYNN	WEDNESDAY	3:45 PM	Gym 2
CARE CLUB (5TH)	MS. PINELLO	WEDNESDAY	3:45 PM	2706
CARE CLUB (6TH)	MS. SANTOS/MS. TRAVERZO	WEDNESDAY	3:45 PM	1301
CHEERFUL CREATIONS	MS. TIRSO	TUESDAY	8:15 AM	1706
CHORUS CLUB 1	MR. DELBAR	TUESDAY	8:15 AM	1203/JMPAC
CHORUS CLUB 2	MS. MANN	TUESDAY	8:15 AM	1805/JMPAC
CODING CLUB 1	MS. RICHARDS	WEDNESDAY	8:15 AM	1205
CODING CLUB 2	MS. SCALA	WEDNESDAY	8:15 AM	1206
DRAMA	MS. BOROWSKI/MS. BROWN	WEDNESDAY & THURSDAY	3:45 PM	1010
HUES GOT TALENT*	MS. KRAMER	THURSDAY	3:45 PM	Gym 2
JAZZ BAND	MS. NICHOLS	TUESDAY	3:45 PM	1524/JMPAC
ORCHESTRA (6TH)	MR. FINNEGAN	T/W/TH	varies as needed	1514/JMPAC
ORCHESTRA (5TH)	MR. NELSON	T/W/TH	varies as needed	1514/JMPAC
STUDENT COUNCIL	MS. CONWAY/MR. DUDEK	WEDNESDAY	3:45 PM	2708
VIDEO NEWSMAKERS	MR. DELBAR	MONDAY - FRIDAY	8:15 AM	1203
YEARBOOK CLUB	MS. MOLOUGHNEY	TUESDAY/WEDNESDAY	8:15 AM	2308

PBSIS

Positive Behavior Support in Schools

Students receive paws for positive behavior and earn prizes as an incentive.



WE ARE...

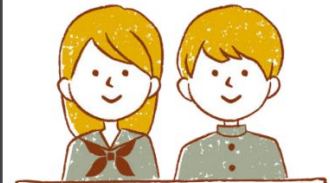
HUES

PBSIS

HAMMARSKJOLD UPPER ELEMENTARY SCHOOL

H

HONEST



TELL THE TRUTH

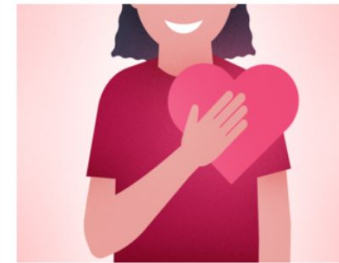
U

UNITED



E

EMPATHETIC



S

SAFE





Parent Access

**On Parent Access
You Can Find Your:**



East Brunswick School District

Parent Access

User Name:



Password:



Login

Please Note: Internet Explorer will not work properly with Parent Access. Please use another Web Browser, such as Firefox, Chrome, Safari, etc.

If you have forgotten your password, please contact your student's school's front office.

Select Language | ▼



➔ **Schedule**

➔ **Gradebook**

➔ **Attendance**

➔ **Fees & Fines**

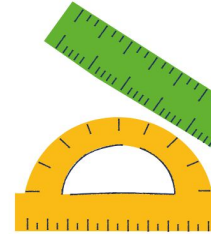
➔ **Documents & Forms**

Parent Access Information



Parent Guide

How To Support
Your Student at
HUES



Parent Access: **How to see grades & assignments?**

Go to Parents.ebnet.org

Your child can log into Parent Access with their own accounts, you do not need to share your login with them.

Passwords are provided when you register or click on reset password.

Student Emails: **How to communicate with teachers or staff?**

Go To Outlook.office365.com

Students will receive emails from teachers to their Outlook accounts.
Students are responsible for checking this email.

Help your child sign into their ebnet email using their login and password. You may need to do this twice, that is okay.



HUES COUNSELING
DEPARTMENT



Conflict Resolution

RESOLVING CONFLICT

How to communicate when there is a problem

TRY THESE STEPS FIRST:

1. REMAIN CALM AND TALK ONE AT A TIME.
2. COME UP WITH A SOLUTION. IT'S OKAY TO AGREE TO DISAGREE.
3. LISTEN TO EACH OTHER AND EXPLAIN HOW YOU FEEL.
4. END ON A POSITIVE NOTE.

IF YOU NEED MORE HELP:

- TALK WITH A STAFF MEMBER CLOSEST TO THE ISSUE.
- IF NEEDED, CONTACT YOUR VICE PRINCIPAL.
 - 5TH GRADE: MRS. DIMAGGIO
 - 6TH GRADE: MR. NYAMEKYE
- IF YOU STILL NEED HELP, CONTACT DR. GASKELL.

Social Media Pointers



Handling Social Media

How will we stay **safe** online?

Ask an adult for permission before trying a new app or website.

Tell an adult if you ever feel uncomfortable, sad, or unsafe.

Never share private information online.



How will we be **kind** and **respectful** online?

Pause screen time when talking with others.

No teasing, embarrassing, or bullying others when texting or chatting online.

Be an upstander for others online.

How will we **balance** our screen time?

Decide on screen-free times or zones as a family

Make sure screen time doesn't interfere with healthy activities.

Take screen breaks as needed.



Tips & Strategies



HOW TO BE SUCCESSFUL AT HUES

Study at least 20 minutes a day for each subject and hand in all homework assignments.

Use your agenda book to stay organized and check your school email daily.

Check Parent Access on a daily basis to stay on top of your grades and assignments.

Pay attention in class and ask questions if you don't know an answer.

Need extra help? See your counselor to find out about extra help after school.

Go on the HUES Counseling page for updates and information re: support groups, clubs, and scheduling.

Check your counselor Google Classroom page for important information.

Make an appointment with your counselor or stop by with any questions.



MATH REQUIREMENTS

MATHEMATICS DEPARTMENT HUES Rising Grade 6 & Grade 7 Math Placement Matrix

Math 6 & Math Prime criteria and expectations comparison [link](#).

Fifth Grade Math to Sixth Grade Math	
Math Prime	Math 6
For students who received a final course grade of at least 95% in Math 5 .	For students who received a final course grade below 95% in Math 5 .

Sixth Grade Math to Seventh Grade Math		
Pre-Algebra	Pre-Algebra Honors	Algebra I Honors
For students who received a final course grade below 90% in Math 6 . OR For students who received a final course grade below 75% in Math Prime .	For students who received a final course grade in the 90% - 97% range in Math 6 . OR For students who received a final course grade in the 75% - 85% range in Math Prime .	For students who received a final course grade of at least 86% in Math Prime . OR For students who received a final course grade of at least 98% in Math 6 .
	Math 7	
	For students who did not demonstrate grade-level proficiency in Math 6 in Grade 6.	



Thank you!

DON'T FORGET TO CHECK THE
HAMMARSKJOLD WEBSITE FOR
MORE INFORMATION!

[HUES COUNSELING WEBSITE](#)