



TPS Mathematics Program

HSA Meeting

December 17, 2024

Presented by Amelia Bowers, District Supervisor of Mathematics

Elementary, Grades K-5

H-S Connection:
**FLUENCY &
GAMES**

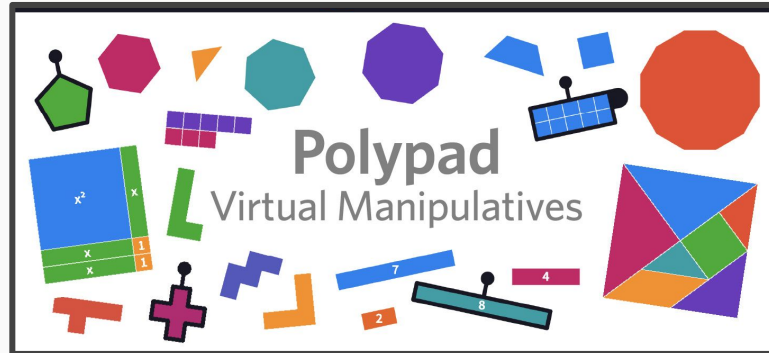
Grade-level mathematics

Math K, Math 1, Math 2, Math 3, Math 4, Math 5

Differentiated by groups of students or individual students

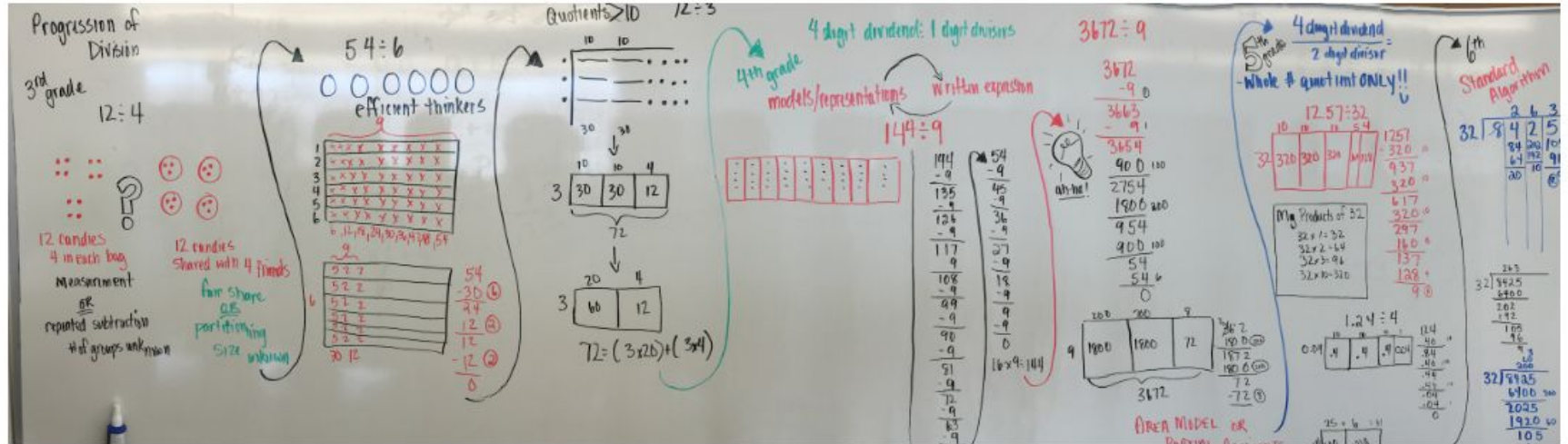
- Content
- Product
- Process

G&T Program (gr. 3)



Elementary, Grades K-5

Graham Fletcher Progression Videos (<https://gfletchy.com/progression-videos/>)



Middle School, Grades 6-8

Grade-level mathematics

Math 6*, Math 7, Math 8

Differentiated by groups of students or individual students

****First opportunity for entry into accelerated math begins in grade 6:***

Students by-pass Math 6 and enter Math 7 Advanced as sixth graders.

**H-S Connection:
HOW TO LEARN
MATH**

Middle School

→ High School Projections

**H-S Connection:
WHAT MATH TO
LEARN**

Math 8 in Grade 8

→ Precalculus or Statistics in Grade 12

Algebra in Grade 8

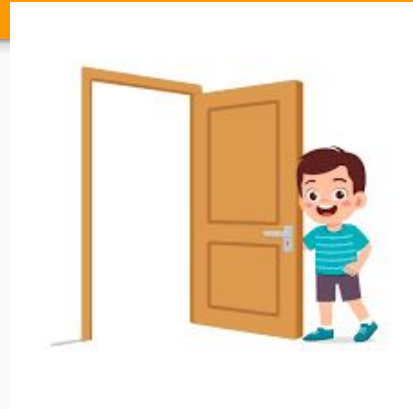
→ Calculus in Grade 12

Algebra in Grade 7

→ Calculus in Grade 11

Pathways to Accelerated Sequences

1. Enter Math 7 Advanced as a *sixth grader*
2. Enter Algebra 7 as a *seventh grader*
3. Enroll in summer/outside course for Geometry (as early as summer prior to *ninth grade*)
4. Double math enrollment in Geometry and Algebra 2 (with successful completion of Algebra 1, *HS students only*)



Pathways to Accelerated Sequences

Teacher recommendation

Current/prior course performance

Benchmark assessments

- **NJSLA-M**
- **i-Ready Diagnostics**

Placements are revisited annually.

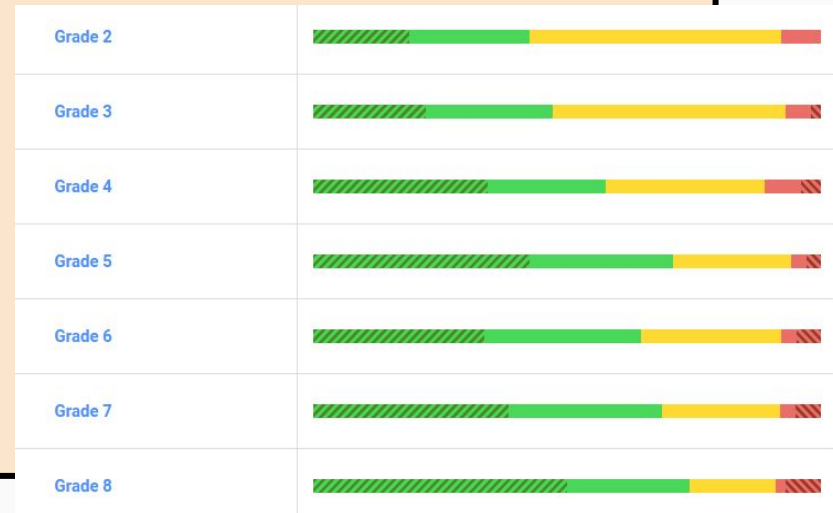
If it is observed that a student is misplaced, we revisit the placement and revise when necessary.

Please see our 25-26 Programs of Study in January for additional detail.

Note: Placement exams are administered only to students new-to-district. Outside courses and coursework cannot be used for placement.

Student Performance Results

- **NJSLA (Grades 3-10)**
 - Exceeded state results in every grade level/course by average of 40%
- **i-Ready (Grades 2-8)**
 - Proficiency increases each* year
- **AP Exams (Math / CS Grades 10-12)**
 - Highest averages since 2020
- **NJGPA (Grade 11)**
 - 91% THS pass rate vs. 54.7% state



New for 24-25

Assessment & Philosophies: K-5 Assessment & Math Mindset

No placement exam 5th to 6th

Professional Development: Conquer Math

Building Thinking Classrooms, 6-12 Book Study

Curriculum Changes: Data Literacy standards

Statistics standards

Thank you

**Contact me for
additional questions or
details:**

Amelia Bowers

abowers@tenafly.k12.nj.us

