

The background features a large, faint, circular seal of the Friendswood Independent School District. The seal contains a map of the district, a compass rose, and the text "FRIENDS WOOD" at the top and "INDEPENDENT SCHOOL DISTRICT" at the bottom.

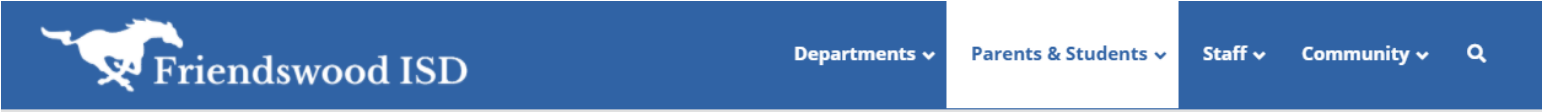
2020 FISD Bond Project Kick-Off

Monday, November 16, 2020



THE BOND PASSED!

Where do we go from here?



The Fisd Bond was passed on Tuesday, Nov. 3rd.

FISD Bond Election 2020



ELECTION DAY
TUESDAY, NOV. 3
EARLY VOTING: OCT. 13-30

TOTAL BOND REQUEST: \$128,275,000

PROPOSITION A: \$127,275,000

New Cline Elementary School	\$44,606,500
Westwood Elementary School 4-Classroom Addition	\$3,007,000
Bales Intermediate School 4-Classroom Addition	\$2,377,000
Windsong Intermediate School 6-Classroom Addition	\$4,555,000
Friendswood High School Additions & Renovations	\$53,373,000
• Construct new Auditorium	• New competition gym with storage and locker rooms
• Renovate existing Auditorium & Fine Arts wing	• Existing locker room renovations
• Renovate existing CTE spaces	• Reconfigure and add athletic field space
District-wide Safety & Security Improvements	\$1,000,000
District-wide Priority Maintenance Projects	\$16,456,500
Land Purchases	\$1,900,000

PROPOSITION B: \$1,000,000

- [FAQ](#)
- [BOND PRESENTATION](#)
- [VOTING DATES & LOCATIONS](#)
- [TOUR VIDEOS](#)
- [ELECTION WEBPAGE](#)
- [CAC WEBPAGE](#)





RFQ for Professional Services

November

- Testing – Material, Geotechnical, etc.
- Surveying

January

- Commissioning Agent
- Asbestos Removal





Cline Project Schedule

Programming & Planning	November 16, 2020 – January 4, 2021
CSP Delivery Method to Board of Trustees	December 14, 2020
Schematic Design – Departmental meetings & presentations	January 5 – March 8, 2021
SD Presentation to the Board of Trustees	March 8, 2021
Design Development – Departmental meetings & presentations	March 9 – May 10, 2021
DD Presentation to the Board of Trustees	May 10, 2021
Construction Documents (Milestones at 25%, 50%, 75%, 95% Issue for CSP)	May 11 – December 17, 2021
Bidding Phase (Advertisements, Pre-proposal conference, receive proposals, bid evaluation)	December 18, 2021 – February 1, 2022
CSP Recommendation to Board of Trustees	February 14, 2022
Construction Administration	February 15, 2022 – May 10, 2023
Substantial Completion	May 11, 2023



Friendswood High School Project Schedule

CM@R Delivery Method to Board of Trustees	December 14, 2020
2-Step Process: Release RFQ, Advertise, Receive Qualifications, Interviews, Short List, Receive Proposals, Evaluate, Negotiations, BOT Approval	December 15, 2020 – February 8, 2021
Programming & Planning – Detailed program for project	January 11 – February 15, 2021
Schematic Design – Departmental meetings & presentations, GMP Estimate from CM@R	February 16 – April 12, 2021
SD Presentation to the Board of Trustees	April 12, 2021
Design Development – Departmental meetings & presentations, GMP Estimate from CM@R	April 13 – June 14, 2021
DD Presentation to the Board of Trustees	June 14, 2021
Construction Documents (Milestones at 25%, 50%, 75%, 95% Issue for CSP), GMP Estimate at each milestone	June 15, 2021 – January 14, 2022
GMP Development Phase (CM@R)	January 15 – February 30, 2022
GMP Recommendation to Board of Trustees	March 14, 2022
Construction Phases (Multi-Phase)	March 15, 2022 – June 30, 2023
Substantial Completion Auditorium	July 15, 2023
Substantial Completion Gymnasium	July 15, 2023
Substantial Completion CTE/Renovation	January 6, 2024

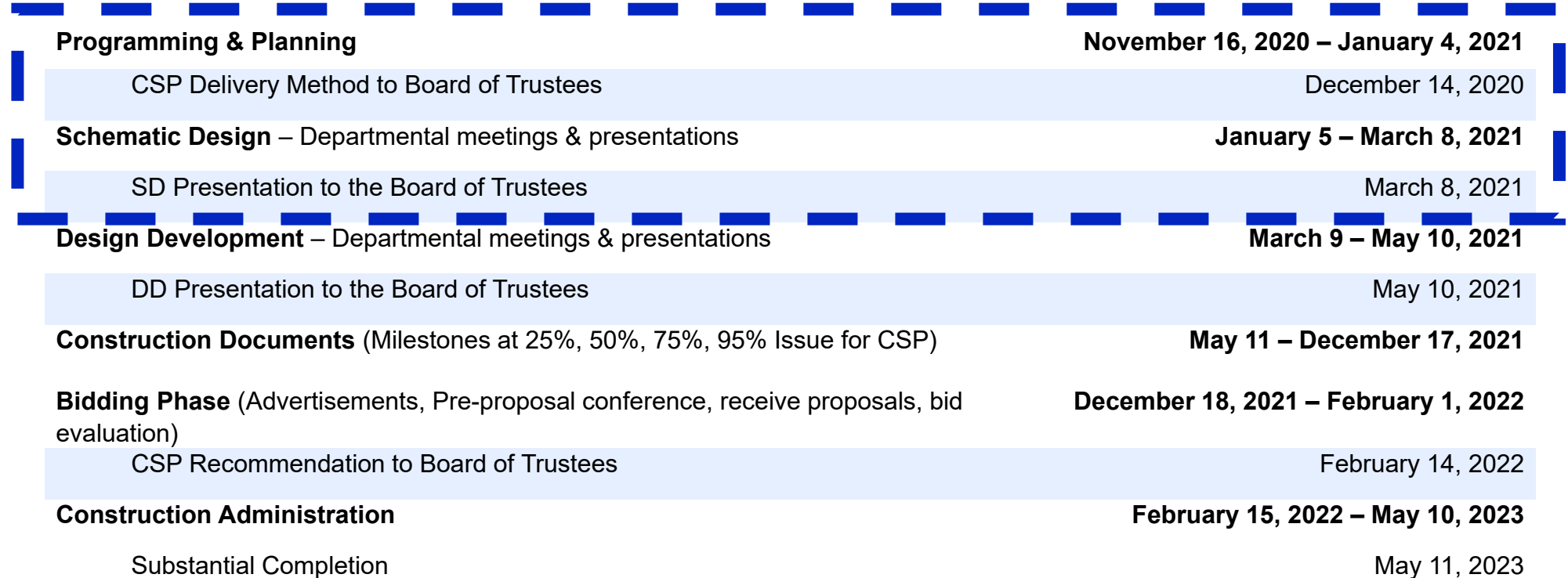


Bales IS, Westwood ES & Windsong IS Project Schedule

Programming & Planning	March 15 – April 30, 2022
Schematic Design – Departmental meetings & presentations	May 1 – June 13, 2022
SD Presentation to the Board of Trustees	June 13, 2022
Design Development – Departmental meetings & presentations	June 14 – August 8, 2022
DD Presentation to the Board of Trustees	August 8, 2022
Construction Documents (Milestones at 25%, 50%, 75%, 95% Issue for CSP)	August 9 – November 8, 2022
Bidding Phase (Advertisements, Pre-proposal conference, receive proposals, bid evaluation)	November 9 – 29, 2022
CSP Recommendation to Board of Trustees	December 12, 2022
Construction Administration	December 13, 2022 – June 30, 2023
Substantial Completion	July 1, 2023



Cline Project Schedule





Cline Project Schedule

Programming & Planning

- Meet with key stakeholders, campus and district administration
- Define campus and community programs and capacities

SPACE/FUNCTION	QUANTITY	NET UNIT	TOTAL NET
MAIN ADMINISTRATION			
Controlled Vestibule	1	100	100
Reception	1	300	300
Principal's Office	1	250	250
Secretary/Administrative Asst's Office	1	125	125
Asst. Principal's Office	1	150	150
PEIMS/Registrar's Office	1	125	125
Counselor/Social Worker's Office	1	150	150
Speech Therapist's Office	1	150	150
Large Conference Room	1	400	400
Small Conference Room	1	200	200
Teacher Workroom/Mailroom	1	350	350
Public/Staff Restroom	2	60	120
Vault (Student Records)	1	125	125
Administrative Storage	2	100	200
Central Storage	2	300	600
Adult Learning/Parent Training Room	1	1,000	1,000
Adult Learning Storage Room	1	30	30
Diagnostician's Office	1	150	150
Itinerant's Office	1	125	125
LPAC's Office	1	350	350
Teacher Planning Room	2	1,500	3,000
Teacher Planning Restroom	2	60	120
Teacher Planning Storage	2	200	400
Clinic			
Patient/Treatment Area	1	350	350
Clinic Toilet	1	75	75
Laundry Room	1	75	75
Clinic Storage	1	75	75
Total Main Administration			9,095
LEARNING EXPERIENCES			
Pre-K Learning Experience	24	800	19,200
Restroom	24	60	1,440
Staff Restrooms	6	60	360
Curriculum Storage	12	150	1,800
Collaboration Areas/Dining/Kitchenette	6	1,800	10,800
Nap Mat Storage	12	80	960
Conference Room	6	100	600
Total Learning Experiences			35,160

SPACE/FUNCTION	QUANTITY	NET UNIT	TOTAL NET
PPCD			
PPCD	2	800	1,600
PPCD Restroom	2	80	160
PPCD Rstorage	2	150	300
Total PPCD			2,060
CORE SPACES			
Active Play Experience			
Play Experience	1	3,000	3,000
P.E. Storage	1	150	150
Girls' Toilet	1	50	50
Boys' Toilet	1	50	50
Table, Chair and Stage Storage	1	300	300
Outdoor Curriculum Storage	1	200	200
Art Experience			
Art Experience	1	800	800
Art Storage	1	50	50
Music Experience			
Music Experience	1	800	800
Music Storage	1	50	50
Total Core Spaces			5,450
SUPPORT AREAS			
Kitchen			
Kitchen	1	1,500	1,500
Dry Storage	1	250	250
Freezer/Cooler	1	250	250
Kitchen Manager's Office	1	100	100
Receiving	1	100	100
Locker Room	1	100	100
Restroom	1	60	60
Custodial Closet	1	80	80
Custodial			
Custodial Storage	1	200	200
Custodial Locker/Break room/Plant Officer/Restroom	1	200	200
Total Support Areas			2,440



Project Schedule

Schematic Design - Benchmarking Tour

- Tour schools and campuses
- Define likes and dislikes

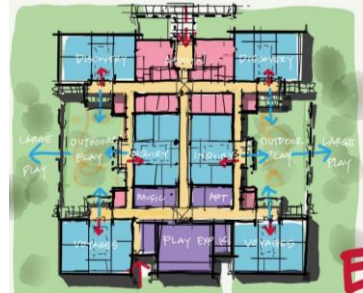
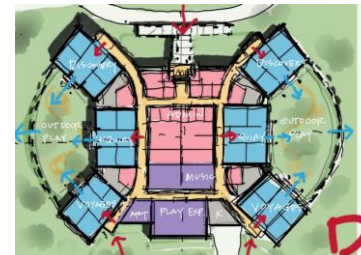
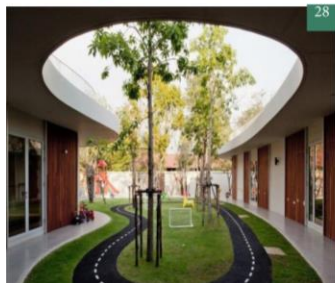
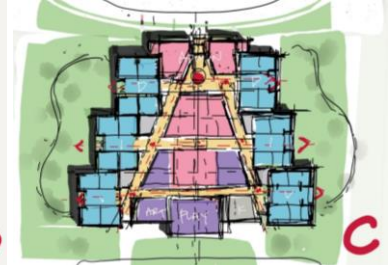
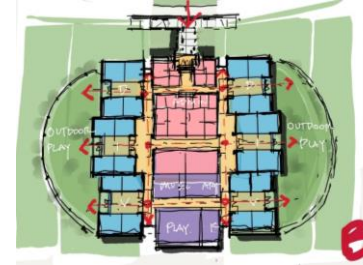
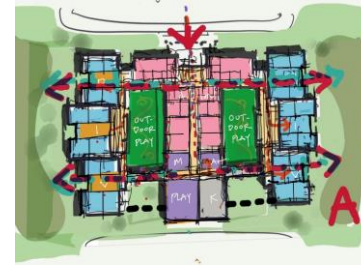




Project Schedule

Schematic Design – Design Charrette

- Tour of Industry
- Strengths and Opportunities identified from tour
- Establish goals for the project





CSP vs. CM@Risk

CSP

No Contractor Input During Design.

Architect creates budget and phasing schedule with owner input during design phase.

Select General Contractor based on Qualifications and Price after Design Phase.

General Contractor includes all subcontractor bids with bid package so limited Owner input on Sub Selection.

On a complex project with multiple phases, each phase must be bid out and the same GC would need to be ranked most qualified every phase to stay on the job for the duration or it all must be bid as one large package.

CM@RISK

Select General Contractor based on Qualifications and Price before or during Design Phase.

Contractor Input on Project Costs and Constructability during the Design Phase.

Contractor gives Guaranteed Max Price at 90% Drawings.

Contractor creates project phasing schedule with architect and district input during Design Phase.

General Contractor solicits subcontractor bids for each scope of work and Owner has a good amount of input on Sub Selection.

On a complex project with multiple phases, the same GC can bid out multiple packages over a number of years if required.



Potential Construction Delivery Method

CSP

Cline

Bales, Westwood & Windsong

Priority Maintenance Items

CM@RISK

Friendswood High School



Other School Districts utilizing CM@Risk



Spring Branch
Independent School District



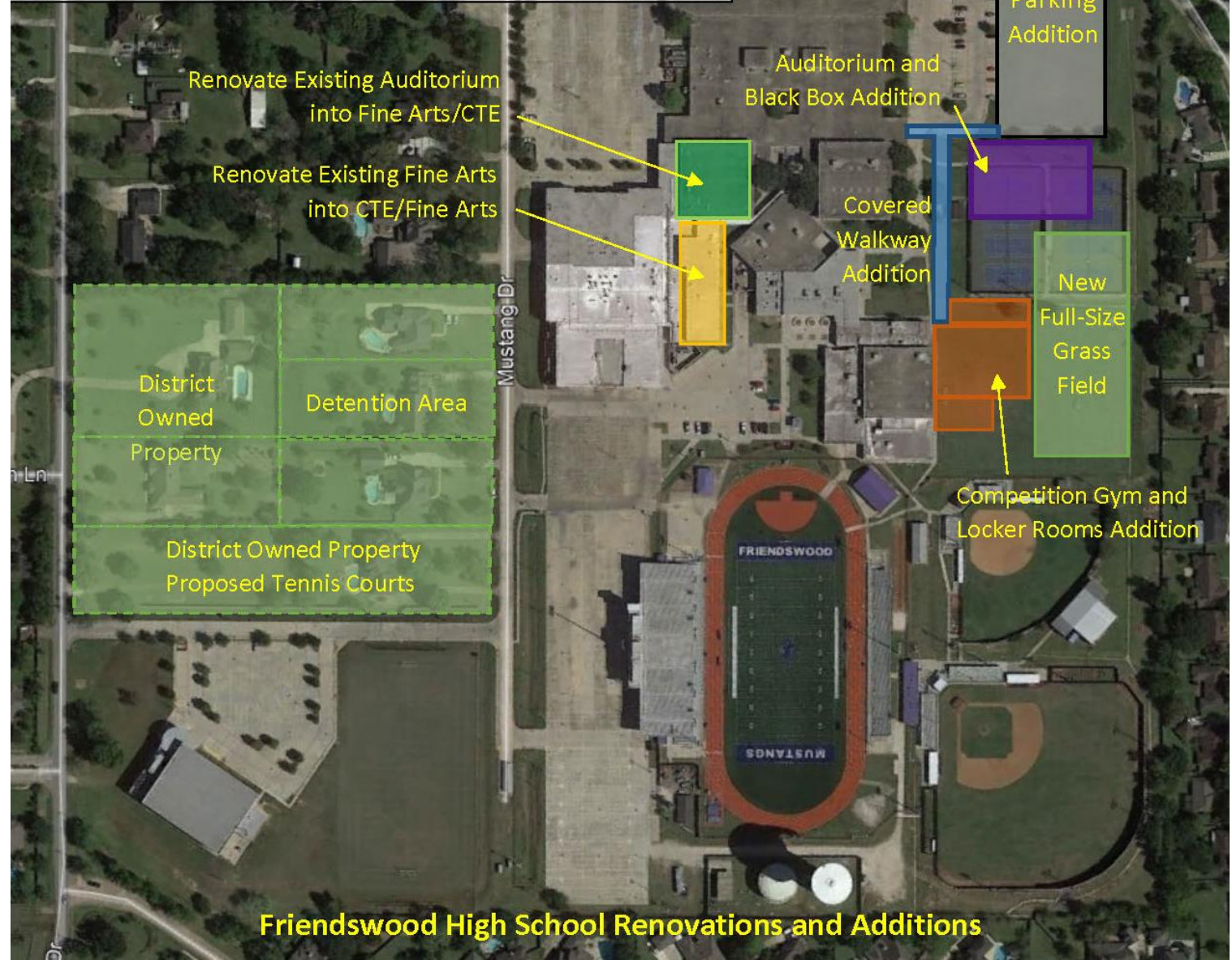
Other School Districts

- Numerous projects in Cy-Fair ISD including Additions and Renovations to Cy-Fair High School.
- Additions and Renovations to Clear Lake High School, Clear Creek High School, and Districtwide Security Upgrades.
- All projects in Conroe ISD including Additions and Renovations to Conroe High School.
- Additions and Renovations to Pearland High School and Dawson High School.
- Additions and Renovations to Klein Oak High School in Klein ISD.
- Additions and Renovations to Northbrook and Stratford High Schools in Spring Branch ISD.
- Additions and Renovations to Humble High School and Quest Early College in Humble ISD



Concept Notes:

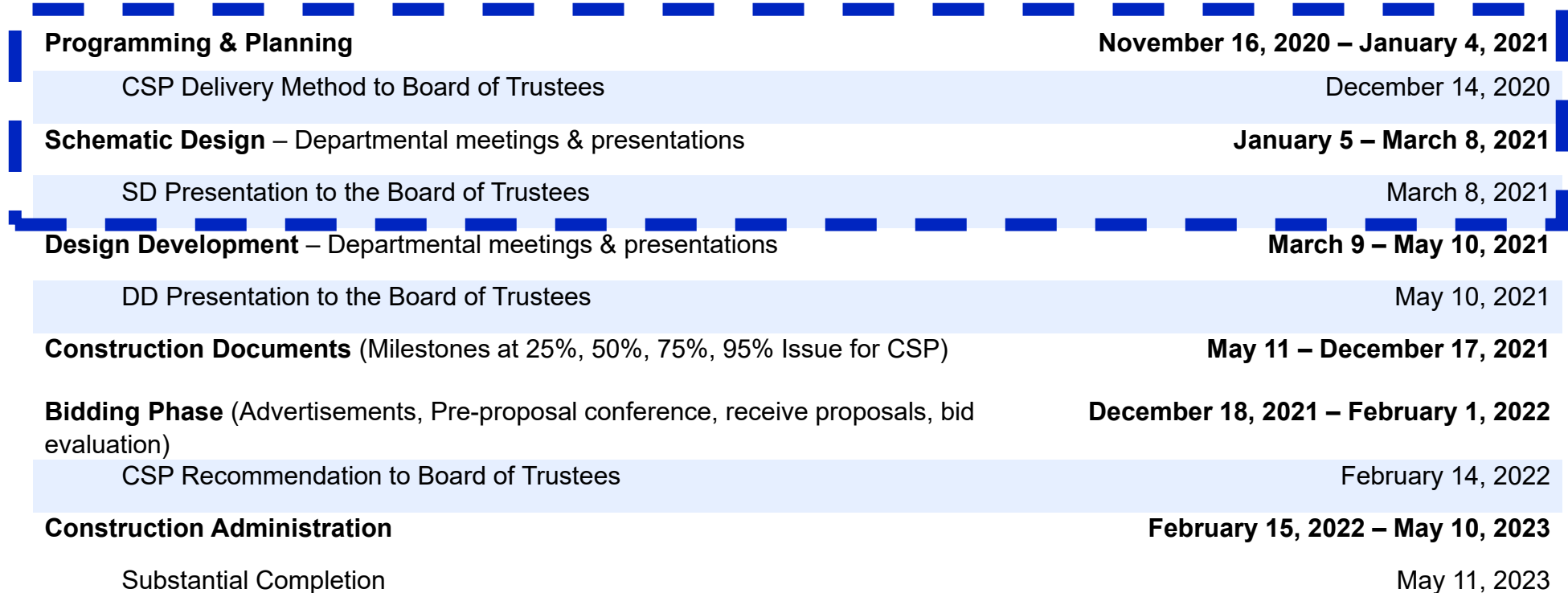
1. Concepts shown on this sheet are conceptual in nature and require further investigation.
2. Not all components are required, however some components are dependent on others.



Friendswood High School Renovations and Additions



Next Steps





QUESTIONS?

