



# **Introduction to Chat GPT for ELA, ENL,** **and Special Education Teachers** ***Presented by Amy Benjamin***

We invite you to come and learn how to use Chat GPT for your professional and classroom learning enhancements. This exciting technology can help you differentiate instruction by creating various levels of text, helping students generate ideas for writing, promoting experimentation with language, creating questions at various levels of complexity, facilitating project-based learning, and other ways to help students learn. The workshop will include opportunities to learn, collaborate, and explore. By the end of the day, you will feel like an expert!



**\*Please Bring a Fully Charged Device to Access the Internet \***

**DATE:** Thursday, January 16, 2025  
**TIME:** 8:30 am – 2:30 pm  
**COST:** \$150 for subscribers / \$199 for non-subscribers (includes buffet lunch)  
**AUDIENCE:** Grade 6-12 Teachers of ELA, ENL, and Special Education  
**LOCATION:** Instructional Support Center @ Sequoya, 750 Waverly Avenue, Holtsville  
**REGISTER:** <http://webreg.esboces.org>  
**CTLE:** Pedagogy



**Amy Benjamin** taught middle school and high school English for more than thirty years in Westchester, New York. She is the author of numerous books, including *Writing in the Content Areas*, *But I'm Not a Reading Teacher*, *Engaging Grammar*, *Vocabulary at the Core*, and *Focus on Text*. Amy works extensively throughout Long Island, New York, New Jersey, and many other regions. She is a New York State English Council Teacher of Excellence, and a consultant to various professional development providers, including the National Council of Teachers of English.



DEPARTMENT OF EDUCATIONAL SUPPORT SERVICES  
PROFESSIONAL DEVELOPMENT PROGRAM

REGISTER  
NOW



## **Deeper Dive into New NYSED Earth and Space Sciences Investigations**

### **Session 2: The Sky is the Limit – Decoding Weather Conditions**

### **The Ripple Effect – The Work of Water Across NY State Surfaces**

***Presented Brian Vorwald***

Session 2 will provide the participants with an opportunity to explore in depth two regents ESS investigations, “The Sky is the Limit – Decoding Weather Conditions” and “The Ripple Effect – The Work of Water Across New York State Surfaces.” Participants will discover how these performance tasks are a component of a broad NYSED’s “System of Assessment.” These investigations provide authentic, hands-on scientific and engineering experiences that allow students to demonstrate the knowledge and skills from the Learning Standards. Science teachers and administrators will deepen their knowledge of the New York State Science Learning Standards (NYSSLS) with their expectations for three-dimensional student learning and how the investigations will prepare students for the 3-D scientific reasoning they will need to perform on.

Included will be:

- Demonstration of how the investigations align with the NYSSLS;
- Suggested guidance for embedding the investigations in a NYSSLS aligned curriculum;
- Review of related portions of the 2024 edition of the Earth and Space Sciences References Tables for each investigation;
- How the investigations are an assessment of student learning;
- A hands-on experience with the investigations;
- An opportunity to collaborate on strategies for successful implementation.

**\*\*\*Participants must bring paper copies of each ESS Investigation’s documents. These cannot be provided\*\*\***

**\*\*B.Y.O.D. (Bring Your Own Device)** - Participants should bring a fully charged laptop, iPad, or tablet to download resources and access websites throughout the workshop.

**DATE:** Thursday, January 16, 2025  
**TIME:** 8:30 am – 2:30 pm  
**AUDIENCE:** Regents Earth Science teachers and science leaders  
**COST:** \$175 for subscribers / \$225 for non-subscribers (buffet lunch included)  
**LOCATIONS:** Instructional Support Center @ Sequoya, 750 Waverly Ave, Holtsville  
**REGISTER:** <http://webreg.esboces.org>  
**CTLE:** Pedagogy



**Brian Vorwald** taught Earth Science for 35 years in Sayville Public Schools, was Science Department Chairperson for grades 6-12, and was an Adjunct Associate Professor of Earth and Space Sciences at Suffolk County Community College for more than 30 years. Brian has delivered numerous workshops at the local and state level, and as a consultant has worked on elementary curricula aligned with the NYSSLS, has delivered numerous workshops for teachers that have provided training in the NYSSLS, and has assisted in helping to develop strategies for aligning middle school and elementary curricula with the NYSSLS.

## Effective ENL Instructional Strategies

*Presented by Luisa Travaglia and Stella Kostopoulos, on behalf of C.I.T.E.*

English Language Learners (ELLs), students learning English while navigating their primary educational instruction face unique challenges in the academic environment. Linguistic barriers can lead to difficulties in grasping complex grammar, vocabulary, and pronunciation, while cultural differences could hinder their ability to connect with the curriculum and participate in classroom activities. Educators can play a pivotal role in supporting these students by implementing culturally responsive teaching practices, adapting instructional methods, and utilizing visual aids and collaborative learning to foster a supportive and inclusive educational environment.

*This full day workshop aims to provide a professional development opportunity for educators to enhance their understanding and ability to meet the ELL students' unique needs. We will:*

- Examine the Stages of Language Acquisition and Strategies for each stage and provide ready-to-use strategies for those students.
- Re-examine how teachers plan for the ENL student
- Offer new ways to plan to use the SIOP model.

Teachers will have the opportunity to interact with colleagues and develop strong questioning and discussion techniques and tasks to maximize goals for their ENL Learner. Together we will address the challenges faced by ELL students and focus on how educators can provide the most supportive and empowering environment for academic success and integration into the broader school community.

**Dates:** Friday, January 17, 2025  
**Time:** 8:30 AM to 2:30 PM  
**Audience:** Elementary Classroom Teachers, Support Staff, Directors of ELA, Elementary Administrators  
**Cost:** \$150 for subscribers/ \$199 for non-subscribers (buffet lunch included)  
**Location:** Instructional Support Center @ Sequoya, 750 Waverly Avenue, Holtsville, NY  
**Register:** <http://webreg.esboces.org>  
**CTLE:** Pedagogy

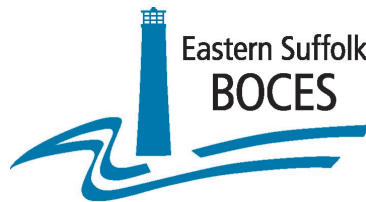


**Bio-** Luisa Travaglia is a firm believer that every student has the potential to succeed. She has over 25 years of teaching, coaching and mentoring experience both with the NYC BOE and Long Island School Districts. She has worked for CITE as an Education Consultant for the past 7 years where she designs and presents teacher and parent workshops. She is committed to providing

classroom teachers, professional staff, and parents with the most current and extensive support to help all students. Luisa understands the importance of providing ELL students with the academic language development they need, while still honoring their home languages. She offers professional development to colleagues on best practices and curriculum changes. When Luisa is not working outside the home, she is working inside the home at her most important job which is being a mom to four, very awesome, sometimes exhausting, young adults! Mrs. Travaglia looks forward to continuing to learn and grow from her students and colleagues.



**Bio-** Stella Kostopoulos has worked for and with the NYC Department of Education for over 35 years in various capacities. She began her career as classroom teacher of ELLs. Drawing from her experience as an ELL student helped her support her students with insights gained from her own challenges learning English, navigating a new country and becoming accustomed to different norms. Her desire to further support students and educators led her to become a Teacher Center Coach and an adjunct professor. Ten years of coaching teachers provided her with a solid foundation to become an administrator; enabling her to guide and support a school community full of students & parents that were a majority of English Language Learners. Since retiring from the NYCDOE, Stella has been working with CITE, providing teachers and parents with workshops on various topics to facilitate their professional and personal growth.



Educational Services That Transform Lives  
DEPARTMENT OF EDUCATIONAL SUPPORT SERVICES  
PROFESSIONAL DEVELOPMENT PROGRAM

REGISTER  
NOW



## **Managing Difficult Classroom Conversations** **Through Historical Topics** ***Presented by Wendy Blair-Braxton***

For most teachers, leading classroom discussion on difficult topics is challenging. A tremendous part of the challenge for teachers is the unexpected aspect of dealing with students and how they will receive the message. The goal of this workshop is to assist teachers in feeling confident leading difficult conversations in history through reflection and preparation. Teachers will be provided with resources to create more productive conversations in the classroom. Our focus topic will be Immigration and discrimination.

### **Participants will:**

1. Understand the basic preparations involved to approach difficult conversations with confidence.
2. Understand strategies to employ and implement in the classroom to turn difficult conversation into an authentic space.

**DATE:** Thursday, January 23, 2025  
**TIME:** 8:30 am – 2:30 pm  
**AUDIENCE:** Grades 7-12 Social Studies Teachers  
**COST:** \$150 for subscribers / \$199 for non-subscribers (buffet lunch included)  
**LOCATION:** Instructional Support Center at Sequoya, 750 Waverly Ave, Holtsville  
**REGISTER:** <http://webreg.esbores.org>  
**CTLE:** Pedagogy/Content



### **Wendy Blair-Braxton**

From 1992 to 2023, Wendy served as a 7th and 8th Grade Social Studies Teacher at Elwood Union Free School District. As the Lead Teacher, Wendy played pivotal roles in curriculum development, program evaluation, fostering district and state standards, and pioneering technology infusion in classrooms. A fervent advocate for Social Emotional Learning, Wendy has pursued insights into Multi-Tiered System of Supports, Conflict Resolution, Diversity, Equity and Inclusion, Restorative Practices, and more, ensuring a wholesome learning environment for students. Recognition for Wendy's outstanding contributions isn't sparse: accolades include "Who's Who of America's Teachers, Teacher of the Year, 1997", the "NAACP Women's Achievement Award, 2022", and the "SCOPE Teacher Achievement Award, 2023". In summary, Wendy Blair-Braxton embodies the very essence of dedication, leadership, and innovative thinking in the realm of education, continuously striving for excellence and uplifting communities.



DEPARTMENT OF EDUCATIONAL SUPPORT SERVICES  
PROFESSIONAL DEVELOPMENT PROGRAM

REGISTER  
NOW



## **Deeper Dive into New NYSED Earth and Space Sciences Investigations**

### **Unearthing Mars – A Historical Perspective**

***Presented Brian Vorwald***

This deeper dive will provide participants the opportunity to explore and complete all facets of the regents ESS investigation “Unearthing Mars – A Historical Perspective.” Participants will discover that this investigation is both an assessment and an opportunity for students to learn how in the early 1600’s Johannes Kepler devised a method to determine the location of Mars in its orbit around the Sun using data collected by Tycho Brahe in the late 1500s. They will see that the present day missions to Mars utilize the same principles of gravity and relative motion that were investigated by Brahe and Kepler.

Participants will learn how this performance task is a component of a broad NYSED’s “System of Assessment.” This and the other two ESS investigations provide authentic, hands-on scientific and engineering experiences that allow students to demonstrate the knowledge and skills from the Learning Standards. Science teachers and administrators will deepen their knowledge of the New York State Science Learning Standards (NYSSLS) with their expectations for three-dimensional student learning and how the investigations will prepare students for the 3-D scientific reasoning they will need to perform on the Earth and Spaces Sciences regents examination.

#### **Included will be:**

- Demonstration of how the investigation aligns with the NYSSLS;
- Suggested guidance for embedding the investigation in a NYSSLS aligned curriculum;
- Review of related portions of the Earth and Space Sciences References Tables – 2024 edition;
- How the investigation is an assessment of student learning;
- A hands-on experience with the investigation;
- An opportunity to collaborate on strategies for successful implementation.

**These deeper dive workshops are intended for educators who have not attended a workshop on the ESS investigations. However, educators who have attended a past investigation workshop and want to attend either session or both sessions to have another hands-on experience and develop a deeper understanding of the intent of the investigations are welcome.**

**\*\*\*Participants must bring paper copies of each ESS Investigation’s documents. These cannot be provided\*\*\***

**\*\*B.Y.O.D. (Bring Your Own Device)** - Participants should bring a fully charged laptop, iPad, or tablet to download resources and access websites throughout the workshop.

DATE:	Friday, January 24, 2025 <b>(Session 1 and Session 2 are not sequential. You can attend one or both workshops, but each requires separate registration)</b>
TIME:	8:30 am – 2:30 pm
AUDIENCE:	Regents Earth Science Teachers and Science Leaders
COST:	\$175 for subscribers / \$225 for non-subscribers (buffet lunch included)
LOCATIONS:	Instructional Support Center @ Sequoya, 750 Waverly Ave, Holtsville
REGISTER:	<a href="http://webreg.esboces.org">http://webreg.esboces.org</a>
CTLE:	Pedagogy



**Brian Vorwald** taught Earth Science for 35 years in Sayville Public Schools, was Science Department Chairperson for grades 6-12, and was an Adjunct Associate Professor of Earth and Space Sciences at Suffolk County Community College for more than 30 years. Brian has delivered numerous workshops at the local and state level, and as a consultant has worked on elementary curricula aligned with the NYSSLS, has delivered numerous workshops for teachers that have provided training in the NYSSLS, and has assisted in helping to develop strategies for aligning middle school and elementary curricula with the NYSSLS.



DEPARTMENT OF EDUCATIONAL SUPPORT SERVICES  
PROFESSIONAL DEVELOPMENT PROGRAM

## Effective CSE/CPSE Chairperson Leadership: Navigating Legal and Regulatory Compliance *Presented by Bill McNally and Dr. Trish Hantzidiamantis*

This engaging workshop will enhance your understanding of the special education process in compliance with educational laws and regulations. Participants will delve deeply into the pivotal role they play in ensuring students receive the best possible education tailored to their unique needs. Attendees will gain invaluable knowledge and skills to excel in the role of a chairperson and leave with practical skills to navigate complex decision-making scenarios.

**DATE:** Friday, January 31, 2025  
**TIME:** 8:30 am – 2:30 pm  
**COST:** \$299 for subscribers / \$349 for non-subscribers (includes buffet lunch)  
**AUDIENCE:** Preschool-Grade 12 CSE/CPSE Chairpersons, Special Education Administrators, School Psychologists  
**LOCATION:** Instructional Support Center at Sequoya, 750 Waverly Ave, Holtsville  
**REGISTER:** <http://webreg.esboces.org>  
**CTLE:** Content, Pedagogy

**Bill McNally** is an experienced special education teacher and administrator. He brings great enthusiasm, energy, and humor to his teaching. Having taught students in Kindergarten through grade 12, the majority of his career was at the secondary level. He taught all academic subjects to students with disabilities in self-contained, integrated co-teaching, and resource room settings. By combining his passions for learning and science, he achieved great success in preparing students for their Regents exams. In addition, Bill supervised an alternative high school program, and a multi-district extended school year program for classified students requiring year-long education. He oversaw a federal character education grant, which received national recognition for implementing social-emotional learning programs focused on building strong character. Bill has been providing professional development on inclusive teaching practices and character education for many years.



**Dr. Hantzidiamantis** began her professional journey in education after graduating from SUNY Geneseo. She received her MS in Special Education from Adelphi, her administration certification at SUNY Stony Brook, and her doctorate in 2011 from Hofstra University in Foundations in Leadership and Administration. Patricia has published the book, "A Case Study Examining Co-teaching in an Inclusive Classroom" and taught special education for 18 years. She was a special education administrator from 2002 until retiring as Assistant Superintendent of Pupil Personnel Services in 2020. Since then, Patricia has been serving as interim administrator in several school districts while also completing educational evaluations as an educational diagnostician. She is excited to continue her work in the field of education with CMDI, collaborating with teachers, teams and administrators to ensure the success of all students.



DEPARTMENT OF EDUCATIONAL SUPPORT SERVICES  
PROFESSIONAL DEVELOPMENT PROGRAM

# Co-Creating the Future

## *Presented by Dr. Richard Bernato*

What does the future demand of us? The “Co-Creating the Future, a Simulation to Create Preferred Futures in your School Planning Efforts” workshop engages school and district leaders and stakeholders in an array of highly motivating, interactive activities where they will:

- Realize the future is happening faster than you think!
- Practice and master skills of strategic planning in a risk-free environment
- Apply lessons and skills learned from the simulation’s activities to recreate their actual strategic planning decisions
- Use a spectrum of creative problems skills, cultural analysis techniques, and edufuturists’ forecasting strategies to weigh against the accelerating challenges we will face among our possible, probable, and preferred futures
- Change their dispositions and beliefs about how to achieve the transformative changes the future will “demand” of them

**DATE:** Tuesday, February 4, 2025  
**TIME:** 8:30 am – 2:30 pm  
**COST:** \$199 for subscribers / \$249 for non-subscribers  
**AUDIENCE:** District and Building based Leaders and Think Tank Members  
**LOCATION:** Instructional Support Center @ Sequoya, 750 Waverly Ave, Holtsville  
**REGISTER:** <http://webreg.esboces.org>  
**CTLE:** Pedagogy



“The play’s the thing, the simulation’s the thing,” captures **Rich Bernato’s** commitment to creative, futures based, experiential strategies to empower school leaders to reinvent their leadership practices against the emerging futures we face. Author and co-author of five books, of articles, and consultancies, experiences in many leadership positions, editorial, and higher education positions, all about effective and engaging practices, have characterized his long educational career. His latest book, published by Solution Tree, is *Co-Creating the Future, a Simulation to Catalyze School Change*, synthesizes his proven strategies for educators who strive to be ready for their future challenges.



## **Differentiating Instruction for Multilingual Learners:** **Strategies for the General Education Classroom** ***Presented by Dr. Marisol Marcin***

Teachers will be able to:

- Identify key characteristics of different language proficiency levels and understand their impact on student learning.
- Recognize basic strategies for differentiating instruction to support students at various language proficiency levels.
- Explore strategies for creating a supportive and inclusive classroom environment for language learners.
- Engage in collaborative discussions, sharing experiences and ideas about differentiating instruction in language education.

This workshop equips educators with strategies to effectively engage students with diverse language abilities. Participants will learn to identify the key characteristics of different language proficiency levels and their impact on student learning. The session focuses on basic yet impactful strategies for adapting instruction to meet the needs of students at different linguistic stages. A significant emphasis is placed on creating supportive and inclusive classroom environments that respect and nurture linguistic diversity. Through collaborative discussions, teachers will share experiences and ideas, fostering a community of practice for enhancing language instruction. By the end of the workshop, educators will be better prepared to cater to multilingual learners with different levels of proficiency, ensuring a more equitable and effective language learning experience for all.

**DATE:** Tuesday, February 4, 2025  
**TIME:** 8:30 am – 2:30 pm  
**COST:** \$275 for subscribers / \$325 for non-subscribers (buffet lunch included)  
**AUDIENCE:** middle and high school general education teachers  
**LOCATION:** Instructional Support Center at Sequoya, 750 Waverly Ave, Holtsville  
**REGISTER:** <http://webreg.esboces.org>  
**CTLE:** Pedagogy/ELL



**Dr. Marisol Marcin**, a prominent figure in language education, brings over 20 years of rich experience to her role. She holds a PhD in Translation Studies and a master's degree in Integrating Technology in Education. Certified in Spanish (7-12) and TESOL (K-12), She currently teaches at Binghamton University, where she specializes in Spanish, Global Studies and teaching methodologies. She is the second Vice President of NYSAFLT (New York State Association for Language Teachers), and a member of the State World Language Leadership Council. Dr. Marcin participated in the revision of the New York World Language Standards, and actively participates in NYSED professional development on world language matters.





## **How Can UFLI Enhance Our Literacy Instruction?**

### ***Presented by Lauren Kolbeck***

As we align our teaching practices and curriculum to match the science of reading, we are looking for ways to enhance our literacy instruction. Many educators are exploring resources from UFLI. Whether you are a reading teacher looking for new resources to support struggling readers or a classroom teacher looking for additional resources to support an already established phonics program, this is the day for you. On this day, we will explore sound walls, heart words, fluency passages, decodable texts, and the structure of the UFLI lesson. Participants will engage in activities to explore the various lesson types and leave with ideas on how to weave this valuable resource into their class instruction.

**DATE:** Wednesday, February 5, 2025  
**TIME:** 8:30 am – 2:30 pm  
**COST:** \$199 for subscribers / \$249 for non-subscribers (includes buffet lunch)  
**AUDIENCE:** K-2 Classroom Teachers, Literacy Coaches, Reading Teachers and Administrators  
**LOCATION:** Instructional Support Center at Sequoya, 750 Waverly Ave, Holtsville  
**REGISTER:** <http://webreg.esboces.org>  
**CTLE:** Pedagogy



**Lauren Kolbeck** is a passionate educator with over 25 years experience as a classroom teacher, reading teacher, literacy coach and staff developer. Creating classrooms where students have the skills for success and a love for learning is her goal. Currently, she works with schools across Long Island. Lauren has worked in rural, urban and suburban schools across the U.S. She has also supported schools internationally in Sweden, Hong Kong and Singapore. For over a decade she has worked as a lead staff developer at Teachers College where Lauren co-authored two books in the Units of Study series.



## **Mindfulness Matters:** **Empowering Educators for Calm, Clarity, and Connection-** **Because Mindfulness Isn't Just for Kids!**

***Presented by Dr. Lori Koerner***

**Discover the transformative benefits of mindfulness** in our focused one day training designed for those working with children; administrators, teachers, paraprofessionals, teaching assistants and aides. This one-day course provides a strong foundation in mindfulness practices, highlighting their impact on personal well-being and the science behind their effectiveness.

Learn how mindfulness can help you manage stress, enhance emotional resilience, and improve overall mental health. Dive into the connection between mind and emotions while mastering practical strategies to bring mindfulness into your classroom or workplace. These techniques will help create a calmer, more focused environment for both you and your students.

Participants will receive a comprehensive toolkit, including detailed practices and strategies for immediate use in their personal and professional lives.

**Join us to explore how mindfulness can enrich your personal life  
and elevate your professional practice!**

**DATE:** Wednesday, February 5, 2025  
**TIME:** 8:30 am – 2:30 pm  
**COST:** \$125 for subscribers / \$175 for non-subscribers (includes buffet lunch)  
**AUDIENCE:** K-12 Administrators and Educators  
**LOCATION:** Instructional Support Center at Sequoya, 750 Waverly Ave, Holtsville  
**REGISTER:** <http://webreg.esboces.org>  
**CTLE:** Pedagogy



**Dr. Lori Koerner** has been in the field of education for over three decades. She spent the first 26 years of her career as an elementary school teacher, having taught every grade. She is a Fulbright Specialist Scholar, and served as an adjunct professor for special education at several universities in New York. Dr. Koerner is currently an Assistant Superintendent in a public school district on Long Island in New York, and plans to retire this summer to begin her ENCORE career! Her research has been centered on educating the whole child; that is, developing students' social competencies, emotional well-being, and physical fitness through movement, interdisciplinary and thematic units of study and play so they are best equipped to meet their maximum academic potential. Dr. Koerner is a mom of four, and a bold child advocate. She has written two number one bestselling books and numerous articles for national magazines regarding paradigm shifts necessary for 21st century learning. Dr. Koerner has presented across the country regarding innovation in education. Her consulting firm is Actually, I Can (and you can, too!) Consulting, LLC.



DEPARTMENT OF EDUCATIONAL SUPPORT SERVICES  
PROFESSIONAL DEVELOPMENT PROGRAM

## **AI as a Co-Teacher** ***Presented by Mubina Khan Schroeder***

AI as a Co-Teacher is a dynamic, one-day workshop designed specifically for educators interested in integrating artificial intelligence into their teaching practices. This professional development opportunity provides a practical and comprehensive introduction to the use of AI tools in the classroom.

*During this interactive workshop*, educators will engage in a comprehensive exploration of artificial intelligence. They will start by learning the foundational concepts of AI, with an emphasis on ethical considerations and potential biases. Participants will also discover effective strategies for incorporating AI tools into their lesson plans, which can enhance student engagement and improve learning outcomes across various subjects. Additionally, the workshop provides hands-on experience with curated AI technologies designed to streamline pedagogy, differentiate instruction, and enhance assessment processes. This practical application not only saves time but also significantly improves teacher-student interactions.

This workshop aims to empower teachers with the knowledge and tools to enhance their educational methods and foster a more engaging learning environment through the adoption of AI technology.

**DATE:** Thursday, February 6, 2025  
**TIME:** 8:30 am – 2:30 pm  
**COST:** \$249 for subscribers / \$299 for non-subscribers  
**AUDIENCE:** K-12 educators across the content areas  
**LOCATION:** Instructional Support Center @ Sequoya, 750 Waverly Avenue, Holtsville  
**REGISTER:** <http://webreg.esboces.org>  
**CTLE:** Pedagogy



Dr. Mubina Khan Schroeder, a distinguished academic with a rich background in cognitive sciences, pedagogy, and educational technology, is a faculty member at Molloy University, New York. Through her extensive experience in the New York City public school system and her current roles, she shapes future educators by teaching graduate and doctoral courses in cognitive sciences, science pedagogy, and neurodiversity. As co-director of the Cognition and Learning Lab at Molloy (CogLe), Dr. Schroeder spearheads the fusion of academic research with technological advancement, fostering collaborations with leading institutions to push the envelope in educational technology. Her research delves into AI and Horizon Technologies' potential to tackle modern educational challenges, including cognitive apprenticeship models in science education and human-computer interaction to boost

student engagement. Dr. Schroeder is instrumental in integrating the UN's Sustainable Development Goals into educational frameworks worldwide, promoting science career engagement, and has partnered with organizations like Brainology, the Berkeley Lab, and the Federal Reserve Bank of New York. Additionally, Dr. Schroeder runs the Molloy University Social Emotional Learning Certificate Program, leveraging her expertise to enhance learning environments and champion cognitive science and education innovation.



DEPARTMENT OF EDUCATIONAL SUPPORT SERVICES  
PROFESSIONAL DEVELOPMENT PROGRAM

## **Math Centers for Base Ten Standards** ***Presented by Nicole Santaromita***



Join us for an engaging workshop that will demonstrate how to effectively incorporate math centers into your daily routine, replacing traditional whole-group math lessons. Focused on the base ten system and tailored for grades K-5, this session will provide you with a variety of center ideas to meet your students' needs. You will have the

opportunity to explore these centers and time to work on implementing them in your own classroom. Do not miss this chance to transform your math instruction and enhance student learning.

**DATE:** Thursday, February 6, 2025  
**TIME:** 8:30 am – 2:30 pm  
**AUDIENCE:** Grades K-5 Math Teachers  
**COST:** \$125 for subscribers / \$175 for non-subscribers  
**LOCATION:** Instructional Support Center at Sequoya, 750 Waverly Ave, Holtsville  
**REGISTER:** <http://webreg.esboces.org>  
**CTLE:** Pedagogy and Content



Nicole has taught elementary for the last 20 years at South Country School District. She has received math training from Marilyn Burns and has used a workshop style that incorporates small group, differentiated instruction, number talks, and formative assessment for many years. She is proficient in reading and writing workshop and word work. Nicole has learned to parallel that ELA model into the math classroom with much success. Presently, Nicole is an adjunct professor at LIU teaching math and science methodology courses. Nicole invites all elementary teachers of math to join in to learn the math workshop model to enhance student engagement and learning for all learners. A deep understanding of mathematical concepts and fluency unleashes the potential success for our elementary students to embrace higher-level mathematics with success.





DEPARTMENT OF EDUCATIONAL SUPPORT SERVICES  
*PROFESSIONAL DEVELOPMENT PROGRAM*

## **Making Groupwork the Norm** ***Presented by Philip Dituri, Ph.D***



Overturn the status quo and create a learning environment where group work is the norm! In this workshop, participants will explore routines, structures, and strategies for using group work to differentiate instruction, set learning goals, increase student independence, promote student accountability and encourage cooperation and communication. Learn about the pros and cons of such an approach and how it affects the culture of your class. We will also

talk about common misconceptions regarding groupwork, student accountability, and various models for group assessment.

**DATE:** Friday, February 7, 2025  
**TIME:** 8:30 am – 2:30 pm  
**AUDIENCE:** Math teachers grades 7 – 12; math directors; math chairs, coaches  
**COST:** \$175 for subscribers / \$225 for non-subscribers (buffet lunch included)  
**LOCATION:** Instructional Support Center at Sequoya, 750 Waverly Ave, Holtsville  
**REGISTER:** <http://webreg.esboces.org>  
**CTLE:** Pedagogy and Content



**Philip Dituri** has taught and inspired educators and children for over 20 years. He is currently an educational consultant working with various schools and the Director of Education at the not-for-profit, Financial Life Cycle Education. He served as a Visiting Professor at Fordham University, and was a teacher, instructional coach, and chairperson of the Mathematics Department at New Design High School in Manhattan. While in public school, he was a three-time Math for America Master Teacher. Phil has a B.A. in Mathematics from NYU and a Ph.D. in Mathematics Education from Columbia University.





REGISTER  
NOW



DEPARTMENT OF EDUCATIONAL SUPPORT SERVICES  
PROFESSIONAL DEVELOPMENT PROGRAM

## **NYSSLS Earth and Space Sciences and More: Encore** ***Presented by Brian Vorwald***

SEPs, CCCs, DCIs, phenomenon-based learning and sensemaking are integral components of the pedagogy of how students must learn in NYSSLS ESS courses and how they will be assessed on the new ESS Regents exam. Are these terms that you recognize from past workshops that now you need to put back into context as you work on a curriculum that is aligned with how students must learn in order to be prepared for how they will be assessed when they take the new Earth and Spaces regents exam? If your answer is yes, then this workshop is for you!

The focus of the workshop is for participants to continue to develop a deeper understanding of how ESS programs must use a New York State Science Learning Standards (NYSSLS) based curriculum in which students will make connections between the Disciplinary Core Ideas (DCIs), Science and Engineering Practices (SEPs), and Crosscutting Concepts (CCCs). They will construct their own understandings to demonstrate their knowledge in context with much less memorization of science facts.

### **Included will be:**

- A brief review of the NYSSLS architecture and the three dimensions;
- A deeper dive into the SEPs and CCCs;
- At least one immersion activity in which participants will experience phenomenon-based three-dimensional learning;
- Review of the released sample item clusters and how they reflect the NYSSLS expectations for how students will be assessed and how they should learn;
- Collaborative discussion of the new Earth and Space Sciences Reference Tables (2024 edition) as to how they should be integrated into instruction and how they may be used in assessment;
- Collaborative discussion of the three required Earth and Space Science investigations and how they should be integrated into a curriculum;
- Resources to assist in developing an Earth and Spaces Sciences curriculum based on the NYSSLS.

**\*This is intended for participants who have not attended an Earth & Space Science Refresher workshop**

**\*\*B.Y.O.D. (Bring Your Own Device) - Participants should bring a fully charged laptop, iPad, or tablet to download resources and access websites throughout the workshop**

<b>DATE:</b>	<b>Friday, February 7, 2025</b>
<b>TIME:</b>	<b>8:30 am – 2:30 pm</b>
<b>AUDIENCE:</b>	<b>Regents Earth Science Teachers and Science Leaders</b>
<b>COST:</b>	<b>\$175 for subscribers / \$225 for non-subscribers</b>
<b>LOCATIONS:</b>	<b>Instructional Support Center @ Sequoya, 750 Waverly Ave, Holtsville</b>
<b>REGISTER:</b>	<b><a href="http://webreg.esboces.org">http://webreg.esboces.org</a></b>
<b>CTLE:</b>	<b>Pedagogy</b>



**Brian Vorwald** taught Earth Science for 35 years in Sayville Public Schools, was Science Department Chairperson for grades 6-12, and was an Adjunct Associate Professor of Earth and Space Sciences at Suffolk County Community College for more than 30 years. Brian has delivered numerous workshops at the local and state level, and as a consultant has worked on elementary curricula aligned with the NYSSLS, has delivered numerous workshops for teachers that have provided training in the NYSSLS, and has assisted in helping to develop strategies for aligning middle school and elementary curricula with the NYSSLS.

DEPARTMENT OF EDUCATIONAL SUPPORT SERVICES  
*PROFESSIONAL DEVELOPMENT PROGRAM*

## Multi-Tiered System of Support Integrated (MTSS-I) A Focus on Secondary *Presented by Dr. Maureen Martin*

*Join us as we unpack the NYSED MTSS-I Framework with a focus on Secondary*

- Learn how to leverage current RTI plans to match instruction for students
- Discover multiple measures for both behavior and academic instruction in order to enhance student learning
- Explore Tiered Instruction for Academics and Behavior to support student learning

***Key takeaways for Participants:***

- Participants will explore the Multi-Tiered System of Support Integrated Framework
- Participants will focus on fidelity of practices within the Multi-Tiered System of Support Integrated Framework
- Participants will implement the MTSS-I Framework for Tier 1, Tier 2 and Tier 3 for Academics and Behavior

**DATE:** Monday, February 10, 2025  
**TIME:** 8:30 am – 2:30 pm  
**COST:** \$150 for subscribers / \$199 for non-subscribers  
**AUDIENCE:** District and School Administrators and Educators Grades 6-12  
**LOCATION:** Instructional Support Center @ Sequoya, 750 Waverly Avenue, Holtsville  
**REGISTER:** <http://webreg.esboces.org>  
**CTLE:** Content



**Dr. Maureen Martin** earned her Bachelor of Arts at St. Joseph's College in Patchogue, NY, her Masters from Adelphi University in Garden City and her Professional Diploma and her Doctorate in Educational Administration from Dowling College. Maureen holds certifications in Special Education and Elementary Education and School Administration and Supervision. Maureen had held both Administrative and Instructional positions in districts on Long Island. Maureen has been an Adjunct at Long Island University and St. Joseph's College. Maureen has spent a majority of her career in the area of Professional Development. Dr. Maureen Martin is a regional presenter and educational consultant with an extensive background in special and general education Pre-K to 12. Dr Martin most recently presented at Innovative Schools Summit at the Marriott Marquis in NYC and at the NYS TESOL Annual Conference in Albany. Maureen has trained extensively in literacy, special education, Multi-Tiered Systems of Support-Integrated, explicit direct instruction, specially designed instruction, co-teaching, questioning, instructional coaching, and overall school improvement. Maureen has worked to develop effective teaching and learning strategies through research based practices to improve student engagement and academic performance.

DEPARTMENT OF EDUCATIONAL SUPPORT SERVICES  
PROFESSIONAL DEVELOPMENT PROGRAM

## Specially Designed Instruction: Putting the “Special” Back in Special Education *Presented by Bill McNally and Denise Cappiello*

This engaging workshop explores the meaning of specially designed instruction and teaches participants how to provide the unique types of instructional services needed by students with disabilities. We will share effective strategies for implementing accommodations and altering, modifying, and/or adapting instructional methods, materials, techniques, and learning environments for supporting students’ diverse learning abilities and needs. Participants will learn a three-tiered approach for making modifications that help students accomplish IEP goals and objectives while supporting the achievement of the general curriculum standards.

**DATE:** Monday, February 10, 2025  
**TIME:** 8:30 am – 2:30 pm  
**COST:** \$299 for subscribers / \$349 for non-subscribers (includes buffet lunch)  
**AUDIENCE:** Grades K-12 Special education teachers, General education teachers, Administrators  
**LOCATION:** Instructional Support Center at Sequoya, 750 Waverly Ave, Holtsville  
**REGISTER:** <http://webreg.esboces.org>  
**CTLE:** Content, Pedagogy

**Bill McNally** is an experienced special education teacher and administrator. He brings great enthusiasm, energy, and humor to his teaching. Having taught students in Kindergarten through grade 12, the majority of his career was at the secondary level. He taught all academic subjects to students with disabilities in self-contained, integrated co-teaching, and resource room settings. By combining his passions for learning and science, he achieved great success in preparing students for their Regents exams. In addition, Bill supervised an alternative high school program, and a multi-district extended school year program for classified students requiring year-long education. He oversaw a federal character education grant, which received national recognition for implementing social-emotional learning programs focused on building strong character. Bill has been providing professional development on inclusive teaching practices and character education for many years.



**Denise Cappiello** is a retired special education teacher with extensive experience at all grade levels from kindergarten through high school. During her teaching career, she has taught students in many settings, including resource room, self-contained, ICT, ENL, alternative high school, home instruction, and summer school. Denise holds certifications in Special Education, TESOL, a SOCE in secondary English, and is Wilson Reading certified. She can offer strategies for educating students of diverse backgrounds and has an overwhelming desire to support educators in building their students’ self-esteem and sense of worth. Denise believes that every child is capable and deserving of success and that there is no “one size fits all approach” to education. Denise embraces every opportunity to share her abundance of knowledge and expertise with educators in her role as an educational strategist.

## **Deconstructing Symbols of Hate**

***Presented by:***

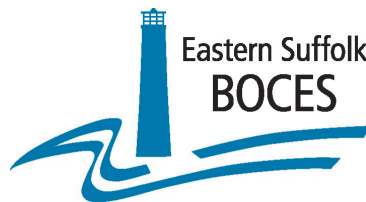
***The Holocaust Memorial Tolerance Center of Nassau County***

Let's closely examines the history behind some of society's most widely known hate symbols, including the Swastika and the Noose. Training will emphasize how we can stand up to hatred. Participants will receive a copy of the presentation, along with background reading and guidelines for turnkey training.



**DATE:** Tuesday, February 11, 2025  
**TIME:** 9:00 am – 11:00 am  
**COST:** \$50 for subscribers / \$75 for non-subscribers  
**AUDIENCE:** K-12 Educators, Administrators, Support Staff  
**LOCATION:** Instructional Support Center @ Sequoya, 750 Waverly Ave. Holtsville  
**REGISTER:** <http://webreg.esboces.org>  
**CTLE:** Content

The Holocaust Memorial Tolerance Center (HMTTC) is a 501(c)(3) nonprofit educational organization, dedicated to educating students and the community about the atrocities of the Holocaust and the importance of tolerance and respect for all people. Our center serves as a valuable resource for school programs, lectures, trainings, and other educational opportunities. We offer a variety of educational programs for students of all ages, teachers, nurses, and police cadets, including age-appropriate workshops and presentations.



Eastern Suffolk  
**BOCES**  
Educational Services That Transform Lives  
**DEPARTMENT OF EDUCATIONAL SUPPORT SERVICES**  
*PROFESSIONAL DEVELOPMENT PROGRAM*

REGISTER

NOW



## **Integration of Social Studies Content Using** **Inquiry Based Learning to Enhance Critical Thinking Skills** ***Presented by Wendy Blair-Braxton***

As history transforms in our culture it is important for teachers to facilitate learning that will enable students to practice their critical thinking skills to enhance 21st century skills. Historical Inquiry requires students to assemble information and draw conclusions from a variety of primary and secondary sources which will support literacy standards in Social Studies and Content Standards. Teachers will be provided with resources to use in their classroom.

### **Lesson Outcomes:**

- 1) Understanding of the Inquiry based learning procedures.
- 2) Comprehend how the Inquiry-Based process will help students develop a historical lens.
- 3) Understanding of the C3 framework and it focuses on the inquiry arc.

**DATE:** Wednesday, February 12, 2025  
**TIME:** 8:30 am – 2:30 pm  
**AUDIENCE:** Grades 7-12 Social Studies Teachers  
**COST:** \$150 for subscribers / \$199 for non-subscribers (buffet lunch included)  
**LOCATION:** Instructional Support Center at Sequoya, 750 Waverly Ave, Holtsville  
**REGISTER:** <http://webreg.esboces.org>  
**CTLE:** Pedagogy/Content



### **Wendy Blair-Braxton**

From 1992 to 2023, Wendy served as a 7th and 8th Grade Social Studies Teacher at Elwood Union Free School District. As the Lead Teacher, Wendy played pivotal roles in curriculum development, program evaluation, fostering district and state standards, and pioneering technology infusion in classrooms. A fervent advocate for Social Emotional Learning, Wendy has pursued insights into Multi-Tiered System of Supports, Conflict Resolution, Diversity, Equity and Inclusion, Restorative Practices, and more, ensuring a wholesome learning environment for students. Recognition for Wendy's outstanding contributions isn't sparse: accolades include "Who's Who of America's Teachers, Teacher of the Year, 1997", the "NAACP Women's Achievement Award, 2022", and the "SCOPE Teacher Achievement Award, 2023". In summary, Wendy Blair-Braxton embodies the very essence of dedication, leadership, and innovative thinking in the realm of education, continuously striving for excellence and uplifting communities.





DEPARTMENT OF EDUCATIONAL SUPPORT SERVICES  
PROFESSIONAL DEVELOPMENT PROGRAM

## The Science of Writing and Applications of NYS Literacy Brief #3:

### How Do We Balance Our Writing Curriculum?

*Presented by Lauren Kolbeck and Deborah Linscott-Feinstein*



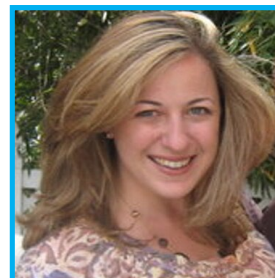
How do we balance our science of writing curriculum between a workshop model that honors students' zones of proximal development and evidence-based practices? How do we foster independence toward lifelong literacy and simultaneously adhere to a sequential scope and sequence?

NYS Literacy Brief #3, Joan Sedita's Reading Rope, Judith Hochman's tips for direct instruction, the gradual release model, and brain science will be synthesized to posit possible answers to these larger-than-life educational goals toward balance. We need not throw out the baby with the bathwater!

We will explore the reciprocity and connections between reading and writing. We will study student work to assess the transference of phonics instruction (Ehri, phonemic awareness and encoding). The application of Brief #3 across content area subject areas and a variety of genres will be explored.

**DATE:** Thursday, February 13, 2025  
**TIME:** 8:30 am – 2:30 pm  
**COST:** \$225 for subscribers / \$275 for non-subscribers (includes buffet lunch)  
**AUDIENCE:** K-8 Classroom Teachers, Literacy Coaches and Administrators  
**LOCATION:** Instructional Support Center at Sequoya, 750 Waverly Ave, Holtsville  
**REGISTER:** <http://webreg.esboces.org>  
**CTLE:** Pedagogy

**Lauren Kolbeck** is a passionate educator with over 25 years' experience as a classroom teacher, reading teacher, literacy coach and staff developer. Creating classrooms where students have the skills for success and a love for learning is her goal. Currently, she works with schools across Long Island. Lauren has worked in rural, urban and suburban schools across the U.S. She has also supported schools internationally in Sweden, Hong Kong and Singapore. For over a decade she has worked as a lead staff developer at Teachers College where Lauren co-authored two books in the Units of Study series.



**Deborah Linscott-Feinstein** has been an elementary teacher, literacy specialist and coach on Long Island for over 20 years. She has created elementary and college level curricula to foster best practices in reading, writing and assessment. Her exuberance in presenting workshops sparks participatory audiences and practical outcomes. Deborah has authored nonfiction and personal narrative writing units, and a mentor author study for Schoolwide, Inc. As a liaison to Teachers College for over 25 years, she helped pioneer school district practices and build capacity. Her credentials include graduate degrees in literacy and school building administration. She works as a literacy consultant in New York and Connecticut.



## EASTERN SUFFOLK BOCES PROFESSIONAL DEVELOPMENT ONLINE REGISTRATION DIRECTIONS

**\*\*TO REGISTER FOR EASTERN SUFFOLK BOCES WORKSHOPS, REGISTER THROUGH THE ACTIVITY CATALOG\*\***

*Check with your district to see if you are a member of Frontline/MyLearningPlan*

**For Frontline/MyLearningPlan Member Districts AND NON-Frontline/MyLearningPlan Member Districts:**

To see available courses and to register:

- Go to the website: <http://webreg.esboces.org>
- Under 'Search Options' at the top center, select and check '**Eastern Suffolk BOCES Professional Development Program**' from the drop down list and click search;
- Workshops are listed in chronological order
- Select the title of the course you would like to enroll in
- Click the **ENROLL** button at the bottom of the page
- Select the **correct** login method that applies to you (1) **registered user**; (2) **new user**; (3) **MyLearningPlan.com user**
- After you choose your login method then **Enter User Name & Password – select Log in**
- Enter and update (if needed) your personal account registration information
- Click **Update & Continue**
- Select payment method
- Click on the checkbox to agree to the Terms and Conditions regarding registration and/or cancellations –  
**"REGISTRATION AND/OR CANCELLATIONS ARE DUE 10 SCHOOL DAYS PRIOR TO THE EVENT. THE DISTRICT WILL BE BILLED UNLESS CANCELLATION IS RECEIVED."**
- Click **SUBMIT**
- Select '**Request Approval**' on the following screen if you are a **Frontline/MyLearningPlan district** - If you are a Frontline/MyLearningPlan District, and depending on your district, you will need to fill out the next screen titled "Regional Provider Form" making sure to fill out all required information; **IF ALL NECESSARY INFORMATION IS NOT ENTERED, A FORM ERROR WILL BE OCCUR AND YOU WILL NOT BE FULLY ENROLLED**
- Click **SUBMIT** once **ALL** fields are filled out
- If you are **NOT** a **Frontline/MyLearningPlan district**, print out the **ENROLLMENT FORM** and **AFTER RECEIVING ADMINISTRATIVE SIGNATURE** on this form, fax back to **631-240-8955**
- You will receive an e-mail once you are fully registered
- Click **RETURN TO MAIN** and then **LOGOUT** to finish the process

**\*\*PLEASE NOTE THAT SUBMITTING ONLY AN INTERNAL CONFERENCE REQUEST FORM DOES NOT REGISTER YOU FOR OUR WORKSHOPS/CONFERENCES – IT MUST BE DONE THROUGH THE ESB REGIONAL CATALOG\*\***

Eastern Suffolk BOCES does not discriminate against any employee, student, applicant for employment, or candidate for enrollment on the basis of sex, gender, race, color, religion or creed, age, weight, national origin, marital status, disability, sexual orientation, military or veteran status, domestic violence victim status, genetic predisposition or carrier status, or any other classification protected by Federal, State, or local law. ESBOCES also provides equal access to the Boy Scouts and other designated youth groups. Inquiries regarding the implementation of the above laws should be directed to either of the ESBOCES Civil Rights Compliance Officers at [ComplianceOfficers@esboces.org](mailto:ComplianceOfficers@esboces.org): the Assistant Superintendent for Human Resources, 631-687-3029, or the Associate Superintendent for Educational Services, 631-687-3056, 201 Sunrise Highway, Patchogue, NY 11772. Inquiries may also be addressed to the Office for Civil Rights at the US Department of Education, 32 Old Slip, 26<sup>th</sup> Floor, New York, NY 10005, 646-428-3800, [OCR.NewYork@ed.gov](mailto:OCR.NewYork@ed.gov).