

# Fine and Performing Arts

2021-22 Departmental Overview and Goals





## MP/SR CHAMBER CHOIRS

Mary Jane Davies Park, Plandome Road, Manhasset NY

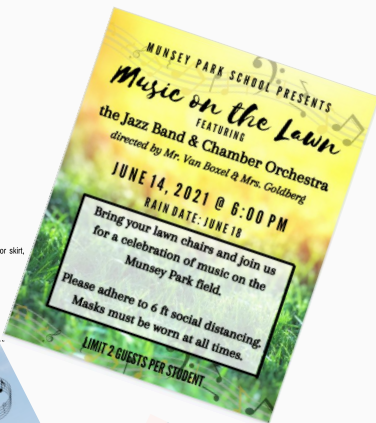
JUNE 2, 2021 (RAIN DATE JUNE 9)  
6:15 PM

Concert Dress: Chamber Choir Tee-Shirt OR navy blue shirt, shorts or skirt,  
socks and sneakers, and face mask.  
Student Arrival: 5:00 PM at M.J. Davies Green Park on Plandome Road  
Parent Arrival: 6:00 PM

THE PERFORMANCE WILL BEGIN AT 6:15 PM AND WILL LAST  
APPROXIMATELY 30 MINUTES.

THERE WILL BE NO SEATING; PLEASE FEEL FREE TO BRING A  
BLANKET, BEACH CHAIR, ETC.

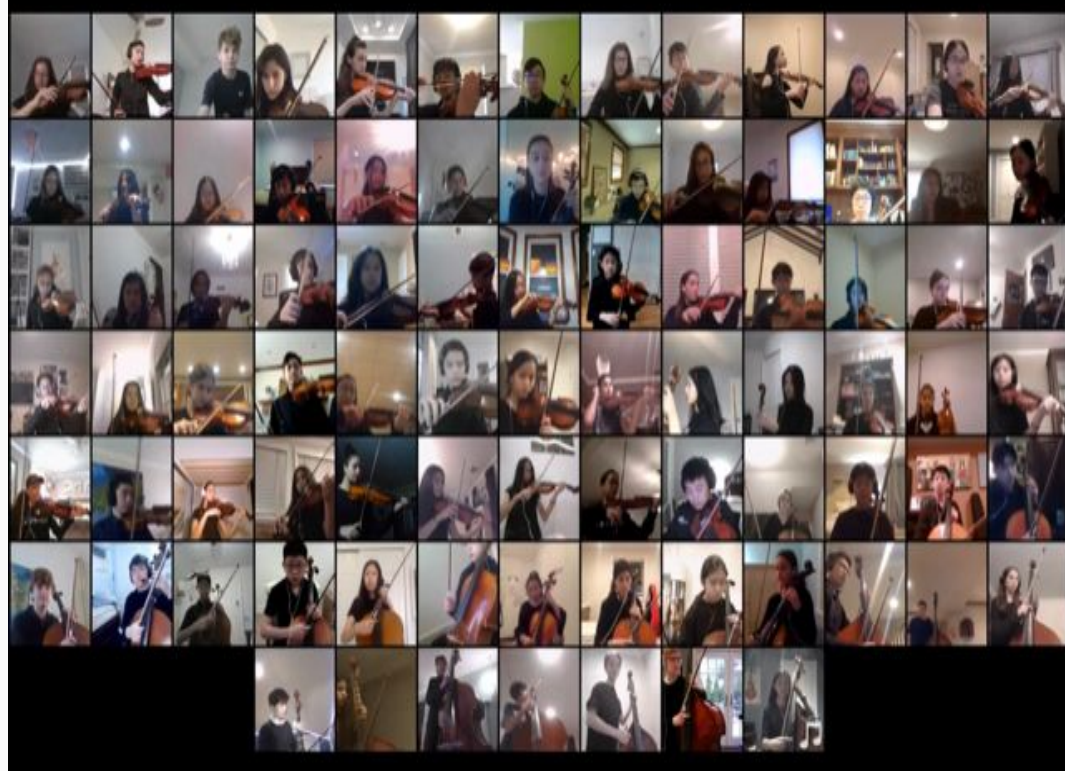
SOCIAL DISTANCING RULES WILL BE IN EFFECT. NO  
WORK BY ALL IN ATTENDANCE.







2020-21 School Performances



2020-21 Virtual Performances



# 2021-22 Overview

- Return to in-person events and performances
- Create high-quality and lasting student experiences
- Promote excellence in our programs



# Extra Curricular Offerings

## Elementary

- Concert Orchestra
- Concert Band
- Chamber Singers
- Chamber Orchestra
- Jazz Band

## Secondary

- MS/HS Play
- MS/HS Musical
- Theatre Repertory Company
- HS/MS Jazz Band
- HS Contemporary Ensemble
- HS Vocal Jazz
- Kinsmen
- Select Chorale
- Chamber Strings
- Life Drawing
- MS Art Club
- Tri-M Music Honor Society
- Art Honor Society



# Returning to our Instructional Spaces



MP Art Room



SR Art Room



Gallery of Fine Arts at  
Secondary School

# Returning to our Instructional Spaces (cont.)



MP Music Classroom



MP Orchestra Room



SR Orchestra Room



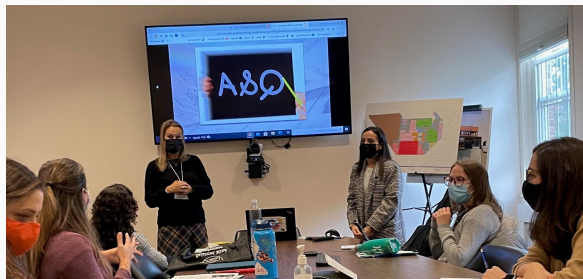
# Priority Area: Enhancing Professional Practice

- Successful Implementation of the AP Art History program, ensuring student success on the exam and promoting growth of the program in subsequent years.
- Develop and propose an update to the current Electronic Keyboard curriculum. Work with faculty to develop and implement music composition/production courses, redesign the music lab space to create opportunities for students to create and compose outside of class time.
- Return to indoor performances and art showcases throughout the year, as well as community performances outside of school.



## Priority Area: Enhancing Professional Practice (cont.)

- Faculty will participate in and present at professional development conferences such as Balanced Mind, LI Orff-Schulwerk, and National Board Certification.



Manhasset Faculty presenting at the *Balanced Mind Conference*, November 2, 2021



# Priority Area: Student Inclusivity, Opportunities and Support

- Meeting with community groups and stakeholders in order to work towards implementing experiences in the Fine and Performing Arts for students in that area.
- To develop a department-wide procedure to nominate students as “Long Island Scholar-Artists” and continue to highlight student successes in the Fine and Performing Arts throughout the school year
- Provide opportunities for students to engage in the Arts at a high level, in both small and large groups



HS Chamber Orchestra @ MJD Park



MP Chamber Singers Rehearsal



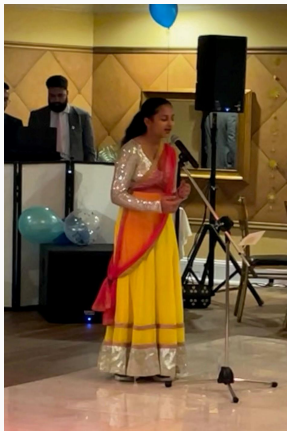
2021 Thespian Honor Society Induction

# Priority Area: Connections

- Celebrate and promote student success throughout the community
- Continue to build and nurture a culture of inclusion
- Leverage long-term student/teacher relationships
- Use the Arts as a vehicle to learn about and celebrate many cultures that make up our community



MHS Students perform at Lunar New Year Arts Festival



Musical performance at 2021 ICM Diwali Celebration



Contemporary Ensemble Dress Rehearsal - June 2021



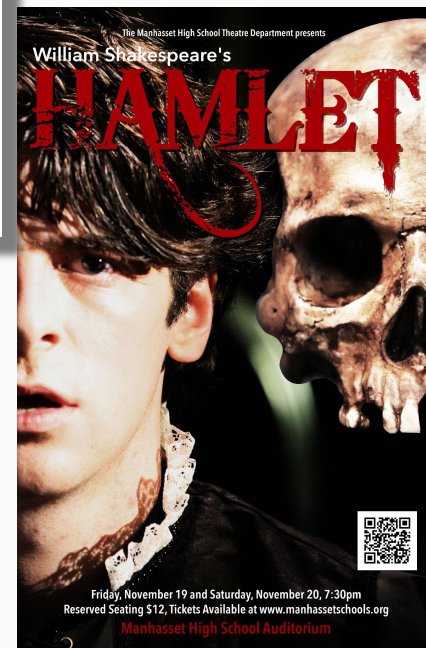
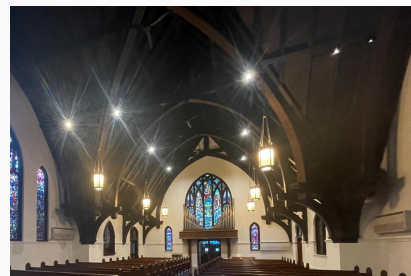
# Priority Area: Facilities

- Inspect and repair auditoriums, which sustained heavy use after the pandemic year
- Long and short-term planning, prioritizing etc.
  - Convert Keyboard Lab to a Contemporary Music Lab
  - Upgrade AV in three auditorium spaces
  - Black Box and Theatre Lab renovation
  - Split unit/dehumidifier for Secondary Orchestra Room
  - Miscellaneous repairs in the Secondary School auditorium, move the sound booth upstairs to the lighting booth



# Upcoming Events

- Theatre Performances
- Winter Concerts
  - In-Person, reserved seat + Zoom streaming
- Community Holiday Performances
- Art Gallery - Student and Professional Exhibits
- Lunar New Year Arts Festival
- Pops Concert
- Symphonic performance at CCE
- Park performances in the Spring



# Special Thanks

- Students
- Family/Parent Organizations
- Faculty



MP Special Area Teachers



NAHS "Chalk-Out"



Backstage Parents - Theatre Brunch