



Celebrating the Many Facets of Every Child: The Manhasset Elementary-Level Data Story

Dr. Donald Gately, Assistant Superintendent for Curriculum, Instruction, and Personnel
Ryan Aliperti, Administrator for Assessment and Data Analysis
Dr. Rebecca Chowske, Director of ELA, Reading, and Libraries
Lauren Tallarino, Director of Math & Business



October 5, 2023

Manhasset Board of Education Presentation

Presenters

Dr. Donald Gately
Assistant Superintendent for Curriculum,
Instruction, and Personnel

Ryan Aliperti
Administrator for Assessment & Data Analysis

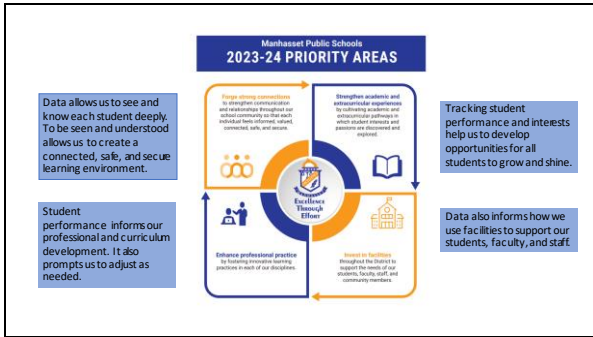
Dr. Rebecca Chowske
District Director of ELA, Reading, & Libraries

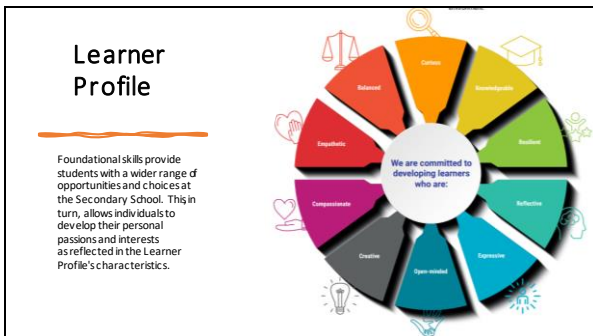
Lauren Tallarino
District Director of Mathematics & Business



[This photo](#) by Unknown author is licensed under [CC BY-SA](#).

Why collect data?

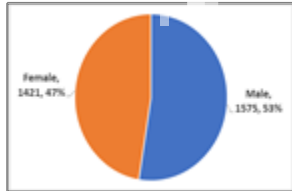




Tonight's Presentation:

- What are we doing for all students? (strengthening academic experiences)
- What are we doing for some students? (strengthening academic experiences)
- AIS (trends)
- What are we doing for all teachers? (professional practice)
- Improvements
- Next Steps

District Demographics 2023-2024



Total = 3,006

Projected BEDS Data Fall 2023

7

Elementary Building Enrollment 2023-2024



Projected BEDS data Fall 2023

Munsey Park		Shelter Rock	
Kindergarten-	88	Kindergarten-	73
Grade 1-	96	Grade 1-	73
Grade 2-	116	Grade 2-	92
Grade 3-	107	Grade 3-	80
Grade 4-	140	Grade 4-	103
Grade 5-	148	Grade 5-	105
Grade 6-	135	Grade 6-	125
Total-	830	Total-	651

8

Elementary School Enrollment 2023-2024

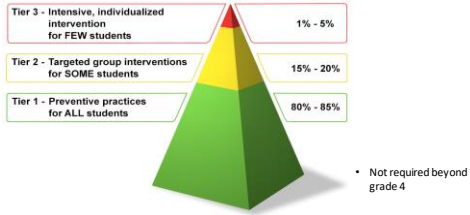


Projected BEDS data Fall 2023

Grade K-	160
Grade 1-	169
Grade 2-	208
Grade 3-	187
Grade 4-	243
Grade 5-	252
Grade 6-	261
Ungraded-	1
Total-	1,481

9

What Data Collection is Required* for All Children? *Response to Intervention*



For All Children: What's helpful?

Math unit tests	ELA Running Records	ELA Heggerty assessments	ELA Foundations assessments	TCRWP Writing benchmarks
Science labs	Social Studies project-based assessments	New this year: IXL ELA support	Reflex/Flax/First in Math	Math in Focus resources

For All Children: What's required? *NYS State Assessments*



GRADES 3-8 ELA

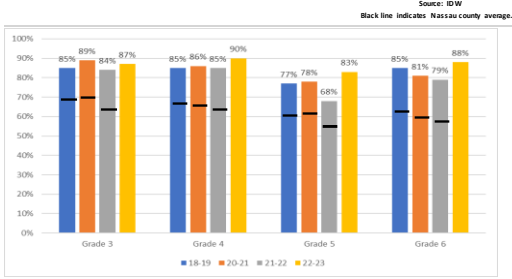


GRADES 3-8 MATH

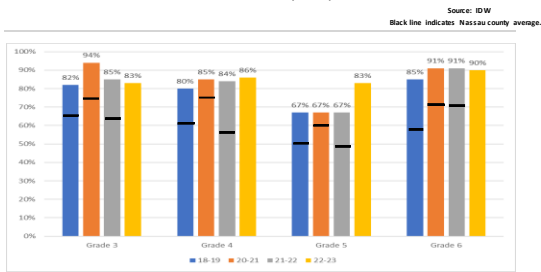


GRADE 5 & 8 SCIENCE

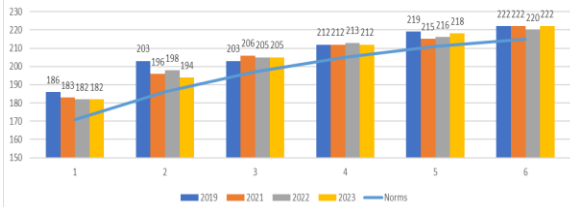
NYS Mathematics Assessment Proficiency: 4-year lookback

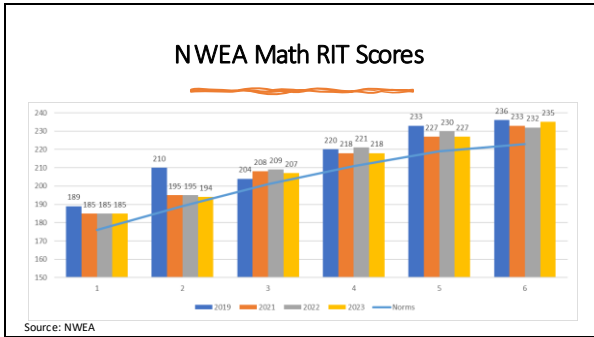


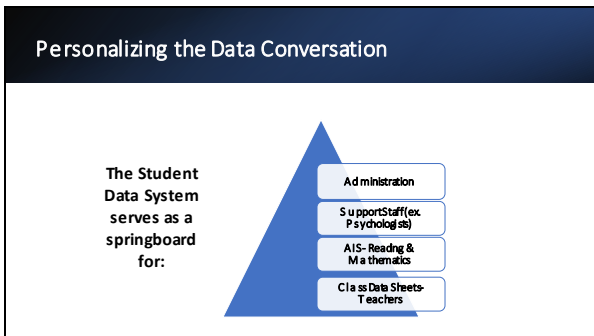
NYS ELA Assessment Proficiency: 4-year lookback

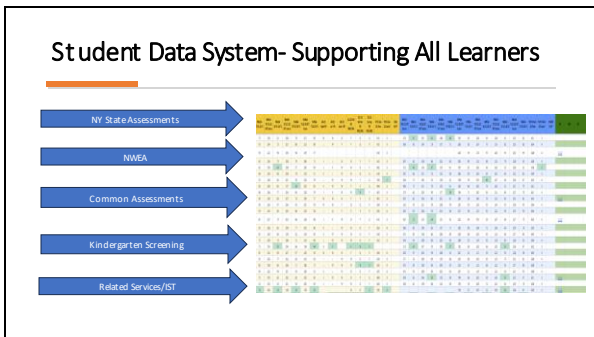


NWEA ELA RIT Scores









End Unit 1- Lower Case	End Unit 1 Sounds	End Unit 1 Letters-Sounds	End Unit 1 Forms L Case	Total End Unit- 32	Unit 2 BI Sounds	Unit 2 CVC	Unit 2 U Case	Total Unit 2- 20
10	10	3	10	33	3	9	10	22
10	10	10	4	34	5	10	6	21

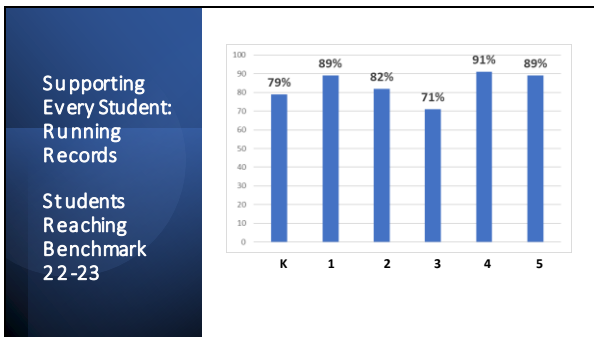
Scores are similar (green), needs are very different.
 We are able to respond with targeted, appropriate interventions
 Can help with targeted interventions- [SDS Link](#)

Closing Gaps- FUNdations

Enriching Students - NWEA

Percentile	RT	Measurement/ Data	Geometry	Operations/ Algebraic Thinking	Number/ Operations
97	227	226	236	206	248
98	230	232	220	237	230

Percentile	RT	Understanding Key Ideas, Details, & Connections	Vocabulary Acquisition & Use	Understand Language, Craft, & Structure
97	228	229	235	220
98	233	241	227	232



What if a child needs more?

The mission of the Instructional Support Team is to identify the learning needs of students experiencing challenges with academic, emotional, and/or behavior support needed to succeed in school. The purpose is to help provide additional classroom support(s) to the student and teacher.

Tier II and III: Math

AIS Math Totals 2022-2023

Grade	Total
1	18
2	21
3	21
4	21
5	22
6	36
	139

AIS Math Impact Snapshot

- 2018 – 2019: 33 Grade 6 AIS students who remained in district
- Fast forward to 2022 - 2023:
- 27 students took the Algebra Regents
- 100% passed
- 48% earned Mastery

Tier II and III ELA/Reading

- Fundations Intervention
- Wilson Just Words
- Wilson Reading
- Linda Mood Bell *Visualizing and Verbalizing*
- Leveled Literacy Intervention
- AIS Summer Program

AIS Reading Totals 2022-23

Grade	Total
K	17
1	20
2	40
3	31
4	29
5	32
6	25
	194

AIS Reading Impact Snapshot

- Of the 2022-23 6th Grade students who attended AIS Reading during both 5th and 6th grade,
- 15 of these students participated in AIS Writing, a pre-Middle school support.
- 24 of 25 reached grade level reading levels by June 2023.


2023-24 Curriculum & Professional Development Response to Data: ELA

- Updated TCRWP K-2 Reading/Writing Units to reflect Science of Reading revisions
- Foundations* extended to grade 2
- IXL introduced to grades 3-6
- Introduction of Manhasset's *Grammar and Spelling Continuum*

2023-2024 Curriculum & Professional Development Response to Data: Math

- Continued use of Reflex/Frax/First in Math supplemental software
- Increased communication with Special Education and ENL departments
- Learning In to Visuals
- Classroom Look-fors

Thank you!



Dr. Donald Gatey
Assistant Superintendent for Curriculum, Instruction, and Personnel
Donald_Gatey@manhasset.schools.org

Ms. Ryan Alpert
Administrator for Assessment and Data Analysis
Ryan_Alpert@manhasset.schools.org

Ms. Lauren Tallarin
Director of Mathematics and Business
Lauren_Tallarin@manhasset.schools.org

Dr. Rebecca Choweke
Director of English, Reading, and Libraries
Rebecca_Choweke@manhasset.schools.org

Additional Secondary ELA Supports and Programs

Class / Program	Enrollment 2022-2023	Enrollment 2023-24	Note:
Read 180 / Wilson / Orton-Gillingham	7	12	These courses are available to all students, both classified and unclassified. Enrollment is fluid; students enter and leave as needed during the academic year.
Intensive Reading	18	29	
Reading-Writing Workshop	27	25	
Writing Workshop	37	45	
Reading-Writing Workshop 9-10	17	16	
Reading-Writing Tech 11	9	7	

Additional Math Supports

Course	22-23 Enrollment	23-24 Enrollment	Average % Regents Passing 2022, 2023
Math 7 Skills	32	22	
Math 8 Skills	17	27	
Algebra X	9	17	95%
Geometry X	14	11	72%
Algebra 2 X	15	19	90%
Precalculus Lab	28	27	
AP Calculus AB Lab	11	9	

These courses are available to all students, while ICT options are available for classified students.
