

1. The rainfall was 1.6 inches in January, 10.3 in February, and 9.25 in March.

What is the average rainfall for the 3 months?

9. There was \$137.89 in my checking account. I wrote a check for \$21.15 and another for \$15.50. How much money is left in my checking account?

2.

If you won a contest and the prize was 100 times a hundred dimes, how many dollars would you have won?

10.

The average size Cashmere goat gives 3 ounces of fleece. How many goats are necessary to provide enough fleece for a coat that weighs 1 pound 5 ounces?

3. How many quarter pound hamburgers can you make from  $2\frac{1}{2}$  pounds of ground beef?

---

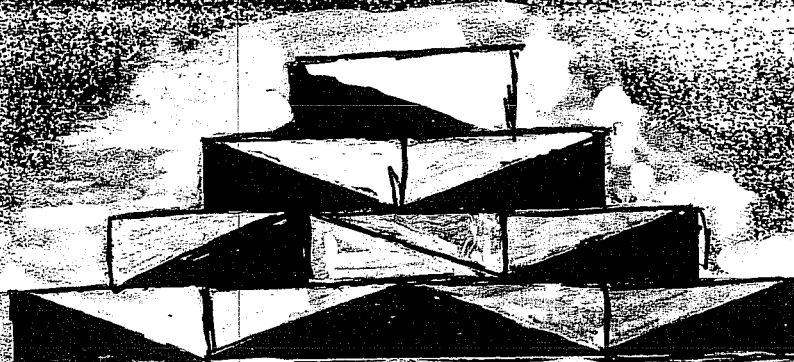
11. A coal miner in the United States mines about  $12\frac{4}{5}$  tons of coal a day. About how many pounds of coal could the miner mine in a 5 day week?

4

How many more points did the Stars bowling team score in the third game than in the second game?

STARS Bowling Team			
Members	Game 1	Game 2	Game 3
Patti	140	135	150
Peg	115	145	160
Pam	125	150	135
Pearl	140	120	138
Paula	112	106	126

12. What percent of the figure is shaded?



5 Paul is 12. His father is 33. How many years ago was the father four times as old as the son?

13

13. What is the missing number?

SOLVE

divide by 4

divide by ?

add 219

230

Start

132

divide by 4

divide by ?

add 219

230

Doris made a list of all the whole numbers from 1 to 100. How many times did she write the digit 2?

14. If you saved two cents on January 1, four cents on February 1, eight cents on March 1, sixteen cents on April 1, and so on, how much money would you save in one year?

7.  $\frac{1}{4}$  is a third of what number?

15. What fraction of the number line segment between  $\frac{1}{5}$  and  $\frac{4}{5}$  is found between  $\frac{1}{5}$  and  $\frac{3}{5}$ ?

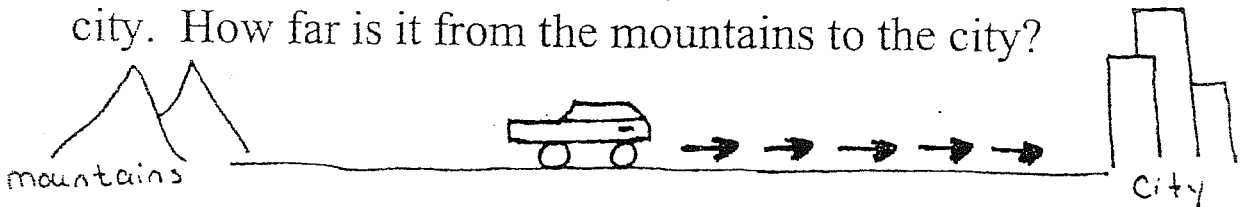


8.

Our plane took off from New York at 9:30 A.M. Eastern Standard Time and landed in Los Angeles at 12:15 P.M. Pacific Standard Time. How long was the plane in the air?

16.

The driver is halfway between the mountains and the city. After she travels 40 more kilometers, she will be 100 kilometers from the city. How far is it from the mountains to the city?



### CIPHERING ROUND ANSWERS

- |    |   |     |                       |
|----|---|-----|-----------------------|
| 1. | 7.05 in.                                  | 9.  | \$101.24              |
| 2. | \$1000                                    | 10. | 7                     |
| 3. | 10  | 11. | 128,000               |
| 4. | 53  | 12. | 45%                   |
| 5. | 5   | 13. | 3                     |
| 6. | 20  | 14. | 8190 cents or \$81.90 |
| 7. | $\frac{3}{4}$                             | 15. | $\frac{2}{3}$         |
| 8. | 5 hours 45 min<br>(5 $\frac{3}{4}$ hours) | 16. | 280                   |