



DEERING HIGH SCHOOL Profile 2024-25

Jake Giessman, Principal

giessj@portlandschools.org

Assistant Principals:

Halima Noor

noorh@portlandschools.org

Rebecca Schouvieller

schour@portlandschools.org

School Counselors:

Laurie Medeiros

medeil@portlandschools.org

Shawn Kennedy

kennes@portlandschools.org

Colleen Demers

demerc@portlandschools.org

Aley Watts

wattsa@portlandschools.org

Total Enrollment: 875

Class of 2025: 238

MISSION

The mission of Deering High School is to graduate students who are ready for college and career and globally competent. Our students gain the knowledge, skills, and habits of mind necessary to succeed and contribute in the 21st-century global environment. **We succeed together because everyone is valued, challenged, and empowered.**

COMMUNITY AND SCHOOL ENROLLMENT

The city of Portland, incorporated in 1786, has a rich historical tradition and diversified economy. Portland is Maine's largest city with 67,000 residents and is located 100 miles north of Boston on the rocky coast of Casco Bay. Portland is well known state-wide for its extensive commitment to strong public education and a vibrant arts and theater community.

Deering is a comprehensive public high school (one of three in the Portland Public Schools system) in an urban location, with 80 teachers and professional staff. Deering is one of the most diverse high schools north of Boston (enrollment 875 students grades 9-12).

POINTS OF PRIDE

- Deering provides students with the opportunity to learn in a diverse environment where equity is considered, taught, practiced, and reinforced.
- All 10th graders take Global Issues, a course based on the Model United Nations curriculum.
- Students take advantage of many successful extended learning opportunities such as volunteering at local food banks, job shadows, job application and resume writing workshops, and are able to participate in interviews with local business owners.
- Every senior completes an independent capstone project.
- Deering's Advisory Program gives every student a sub-community with a curriculum focused on developing social-emotional well-being, supporting positive behavior, advancing equity, and building community. Advisory groups meet daily.

30 HONORS COURSES

English 1, 3 and 4
Pre-AP English 2

US & the Modern World History

Pre-AP French
Pre-AP Spanish

Algebra II
Geometry
Accelerated Math I and II
Pre-Calculus

Environmental
Science
Biology
Physics
Chemistry
Anatomy & Physiology

Studio Art
Orchestra

18 ADVANCED PLACEMENT COURSES

US Government
Comparative Government &
Politics
Human Geography
United States History
World History

English Literature & Composition
English Language & Composition

Calculus BC
Computer Science
Statistics

Biology
Chemistry
Environmental Science
Physics
Psychology

Spanish
French
Studio Art

- Deering offers 18 Advanced Placement courses.
- 12 seniors in the class of 2024 earned the new Seal of Biliteracy.
- 12 seniors in the class of 2024 earned the STEM endorsement.
- Students take part in over 25 athletic teams and over 40 co-curricular activities.

HIGHER EDUCATION:

Members of the Class of 2024 were accepted to institutions of higher education such as: Middlebury College, American University, Georgia Institute of Technology, Northeastern University, Yale University, Southern Maine Community College, Vassar College, and several schools within the University of Maine System.

DIPLOMA REQUIREMENTS & SCHEDULE

The following 41 credits are required: English 8, Mathematics 6, Social Studies 6, Sciences 6, Fine Arts 2, Physical Education 2, Health 1, Electives 10. Each semester course is worth two credits (1 Carnegie Unit). Deering High School operates on a four-by-four block schedule. Students may enroll in a maximum of four two-credit courses each semester and earn a maximum of sixteen credits per year within the regular curriculum.

Beginning in the 2018-2019 school year, Deering adopted a grade scale with eight cut points aligned with rigorous learning standards. The Portland Public Schools will not evaluate/interpret international transcripts beyond recognition of credit awarded. For a complete review of our building schedule and courses, please consult the Deering Course Selection Guide on the Deering School website: dhs.portlandschools.org/academics

EARLY COLLEGE & DUAL LEARNING

Deering offers three dual enrollment courses – Music Appreciation, Calculus A, and Quantitative Reasoning – with Southern Maine Community College. Students with an 85 or better cumulative average may participate in Early Studies Programs at the University of Southern Maine, Southern Maine Community College and St. Joseph's College or online through the University of Maine. All students are able to take online Advanced Placement courses through Maine's AP4ME program.

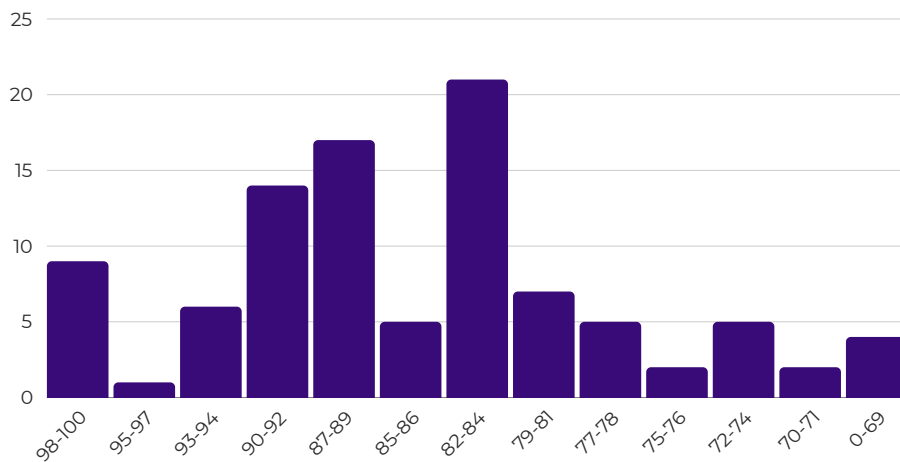
SEAL OF BILITERACY

The Seal of Biliteracy is awarded to students who have demonstrated proficiency in English and another world language. Proficiency in English is typically met through the completion of high school graduation requirements. Proficiency in another language is demonstrated by scoring at an Intermediate Level 1 or higher in all domains on the ACTFL standards. For Arabic and Chinese, a score of Novice Level 4 or higher is required. The Seal of Biliteracy was offered at Deering for the first time in 2018.

STEM ENDORSEMENT

The STEM endorsement honors students who have deeply explored the field during their high school years. This endorsement is awarded when a student has earned 20 credits in STEM courses including Pre-Calculus and a college or Advanced Placement course. Students must also complete 50 hours of work in at least two of the following three categories: Extended Learning Opportunities (minimum 30 hours), Internship(s) (minimum 10 hours), Senior Capstone Project (minimum 20 hours).

2024 GRADE SCALE



CLASS OF 2024 AVERAGE SAT SCORE

SAT	ERW	MATH	Total
Deering	461	446	907
Maine	532	495	1027
National	585	466	952

STUDENT DEMOGRAPHICS

875	Total Enrollment
238	Class of 2025 size
33%	English Language Learners
64%	Economically Disadvantaged
20%	Identified with a Disability

RACE/ETHNICITY

0.5%	American Indian/Alaskan Native
0%	Native Hawaiian or Other Pacific Islander
3.9%	Asian
39.1%	Black or African American
11.2%	Hispanic/ Latino
5.2%	Two or more races
40.1%	White

POSTSECONDARY PLANS CLASS 2024

52%	4-Year Institutions
29%	2-Year Institutions
13%	Work
5%	Prep School
1%	Military
0%	Other/Unknown

