



Ellesmere  
Co-ed 7-18 Day and Boarding

# Academic Success 2024

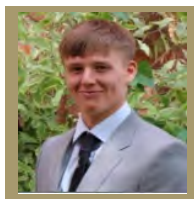


## Ewan Tulloch

A\*A\*A

### Gap Year

Ewan joined Ellesmere in Year 10. He was an excellent sportsman and represented the school in a number of sports including being a member of the rugby academy in which he made a significant contribution to the success of the 1st XV side. He was a reliable member of the school prefect team and an excellent role model for Ellesmere College pupils.

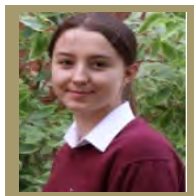


## Amelia Harrower

A\*A\*B

### Chemistry with Medicinal Chemistry, University of Birmingham

Millie joined at the start of the sixth form and was outstanding from day one. A committed chorister - both chapel and chamber, strong leader in the Navy section of the CCF and an outstanding academic and school prefect. She became Captain of Chemistry and was an equally strong Biologist/Mathematician and goes on to pursue her love of chemistry at university.

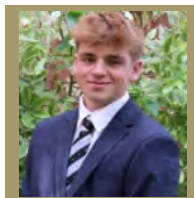


## Alex Phillips

A\*BB

### Politics and International Relations, University of Bath

Alex joined Ellesmere in Year 7 and has contributed to all areas of the College over the years. This culminated in him becoming Captain of School in Y13 where he continued to lead by example. His contributions on the rugby pitch were his major highlight along with competing the Gold Duke of Edinburgh's Award before finishing his studies with us.

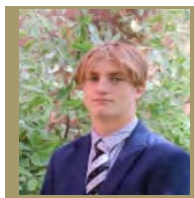


## Oscar Dodds

AAA

### Mechanical Engineering, University of Birmingham

Oscar joined Y10 from Victoria College Jersey as an established swimmer. Oscar has turned his hand to both sport for Woodard and to acting in various House plays but his true forte was as a committed member of the Ellesmere College Swimming Academy. Oscar competed in various regional and national competitions with many representations for Great Britain.



## Haobo Sun

AABB

### Finance, Durham University

Teddy Sun joined the College in Year 10 and went on to become a school prefect in his final year. He was a keen badminton player and was a regular member of the school team. Alongside his academic commitment, he was a keen contender in the Maths Olympiad and reached a Gold level in the UK Maths Challenge and achieved a Distinction in his ESB.



## Arabella Sernberg

ABB

### International Relations & Politics, (Def 25) Cardiff University

Arabella joined for the sixth form and swiftly became a valuable member of the College, contributing to activities such as the MUN and as a senior NCO in the CCF. She was also a keen runner and did lots of good work volunteering and teaching overseas in her holidays and regularly for the Cheshire Military museum. Her choice of degree reflects her many interests.



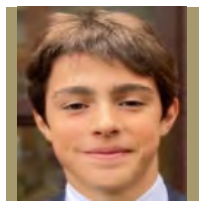
# International Baccalaureate (IB)

41 Points

## Joseph Lelong

International Economics, Bocconi University, Milan

Joseph joined our sixth form having come from Paris, France with a strong all-round academic history. He was a keen footballer and member of the Football Academy and also enjoyed supporting his competitive House. Joseph also took the lead in organising English speech, poetry and presentation workshops for pupils from local schools.

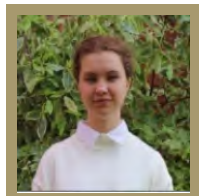


## Oksana Trefanenko

40 Points

International Relations, Harvard College, USA

Oksana joined Ellesmere in the sixth form and contributed so many areas of the school, making a such a difference that she was selected to be Captain of School, a role that she excelled at. Oksana represented the very best of an IB International student and her place at Harvard was well-deserved and will only lead to greater things in the future.

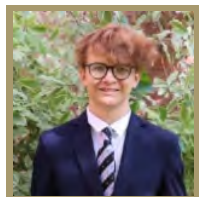


## Lukasz Bacewicz

40 Points

Natural Sciences and Law, Minerva University San Francisco, CA, USA

Lukasz joined Ellesmere in the sixth form and immediately made an impact with his enthusiastic approach to all things from choir to volleyball to running Medsoc and all things in between. It was no surprise that he became an excellent prefect and superb all round academic IB pupil. His degree course will allow him to plot his own course for the future. It will be bright.

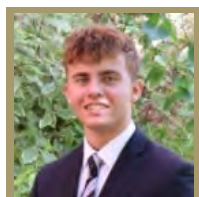


## Bennet Schuman

37 Points

Medicine, University of Germany

Bennet joined St Bede's House in the Sixth Form. His strong work ethic and interest in a wide variety of aspects of school life led him to become a School Prefect and he captained the tennis team as well as enjoying volleyball, golf and he was a member of the fencing team. He leaves to study medicine back in Germany and will continue to be an ambassador for Ellesmere College.

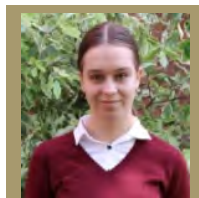


## Sofia Avramidi

37 Points

Geography, Durham University

Sofia joined us in the Sixth Form and already had a clear passion for environmental concerns. She joined in MUN and the Green Team which fitted with her passion for engaging in both local and international action on this front. As a top flight academic student, Sofia will, no doubt, work hard to make a big impact on some of the important issues in society.



## BTEC

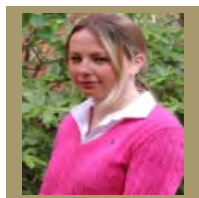
(D - Distinction; M - Merit)

## Prue Noss

D\*DD

Manchester City Community Coaching, Manchester Met University

Prue loves everything related to sport and has achieved a great deal in football, swimming and cricket. She joined in Year 9 and contributed to all aspects of school life. She completed her Duke of Edinburgh's Gold Award before finishing at Ellesmere and showed her coaching ability when she used this as her volunteering working with Lower School.



## Russell Group Universities

Durham University  
University of Leeds

University of Liverpool

University of Birmingham

Cardiff University

Newcastle University  
University of Warwick

Geography, Finance  
English Literature with Creative Writing, Classical Civilisation and Philosophy  
Medicinal Chemistry with Pharmacology, Chemistry, Law with Business  
History, Mechanical Engineering, Chemistry with Medicinal Chemistry and Drug Discovery, Mathematics and Philosophy  
Physical Geography, Biological Sciences (inc. Prof Training Year)  
Marine Geography with a Year of Study Abroad, Law, Mechanical Engineering  
Marine Biology  
History and Politics

## National Universities

Cardiff Metropolitan University  
Edge Hill University  
Falmouth University  
Harper Adams University  
Lancaster University

Leeds Beckett University

Liverpool John Moores University  
Loughborough University  
Manchester Metropolitan University

Northumbria University, Newcastle  
Nottingham Trent University

Oxford Brookes University  
Staffordshire University  
University of Bath  
University of Surrey  
University of Sussex  
University of Warwick

Psychology, Sport and Exercise Science, Sport Coaching  
Business & Management  
Film with Integrated Foundation Year  
Rural Property Management (with Placement)  
Computer Science, Business Economics, English Language with Linguistics  
Real Estate and Property Management, Fine Art, Sport Business Management, Business & Management, Digital Marketing, Sports Marketing, International Business  
Criminology and Psychology, Applied Entrepreneurship  
Media and Communications  
Manchester City Community Football Coaching, Sports Business Management  
Humanities Foundation Year  
Forensic Science (with Foundation Year), Business (with Foundation Year), English and  
Philosophy, Marketing, Electronic and Electrical Engineering (with Foundation Year), Sport and Exercise Science  
Real Estate, Life Sciences Foundation  
Computer Games Development  
Politics and International Relations  
Politics and Economics  
Business Management and Economics  
History and Politics

## International Destinations

Harvard College, USA  
Minerva University, San Francisco, CA., USA  
Northwestern University, Illinois  
San Diego State University, USA  
Cayuga Community College, New York, USA  
University of Amsterdam  
Germany

International Relations  
Natural Sciences and Law, Philosophy and Ethics  
Business Management  
Liberal Arts (Football Scholarship)  
Business Management  
History and International Relations  
Economics and Finance



**Ellesmere**  
Co-ed 7-18 Day and Boarding

[www.ellesmere.com](http://www.ellesmere.com)

Tel: 01691 622 321



/ellesmerecoll



@ellesmerecoll



ellesmere\_college