



STOUGHTON AREA SCHOOL DISTRICT EXECUTIVE SUMMARY

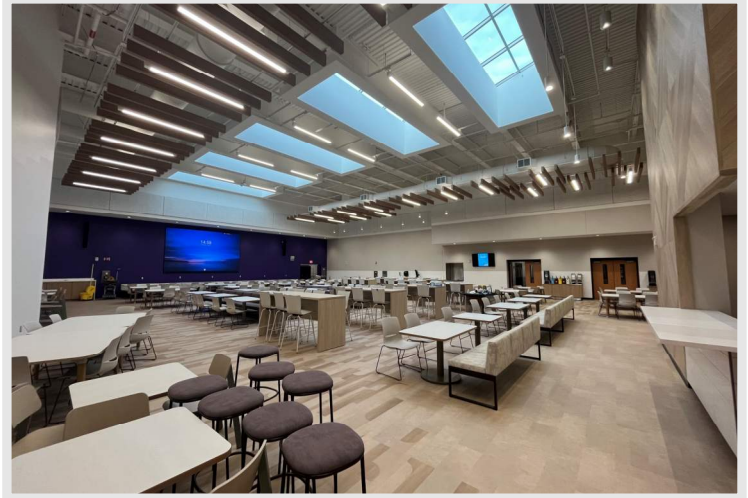
PROVIDED BY FINDORFF

City of Stoughton, Wisconsin 1/3/2024

Stoughton High School

Welcome to the new year and welcome back to the newly renovated Stoughton High School Commons, Kitchen, and Servery! Photos do not do this space justice! The five 20-foot skylights that were added to the Commons illuminate the complete transformation these spaces have undergone the last several months. Students and staff will appreciate the new finishes, furniture, and equipment that were all completed to modernize the space.

We are thankful for the patience of the High School students and staff and are very excited to see them officially return to the Commons, Kitchen, and Servery spaces next week following Winter Break!



Top Right: a view across the High School Commons following the completion of finishes and furniture install



Bottom Left: another photo highlighting the finished look of the High School Commons at the new school store



Bottom Right: a photo highlighting the amazing wood paneling feature wall in the Commons completed by the Findorff carpentry team

DID YOU KNOW?

Two special guests will be serving lunch at the High School Monday (1/6) when the students return from break. Findorff's own Fritz Friedrichs (*Project Engineer*) and Andrew Wiedenfeld (*Supervisor*) will be swapping their hardhats for hair nets (and a mustache net) to assist with serving lunch! Both Fritz and Andrew were leaders of project team behind the amazing transformation of this space!

Questions?

Senior Project Manager, Matt Claggett / 608.729.2155 / mclaggett@findorff.com

Findorff
BUILDING & BEYOND



STOUGHTON AREA SCHOOL DISTRICT EXECUTIVE SUMMARY

PROVIDED BY FINDORFF

City of Stoughton, Wisconsin 1/3/2025



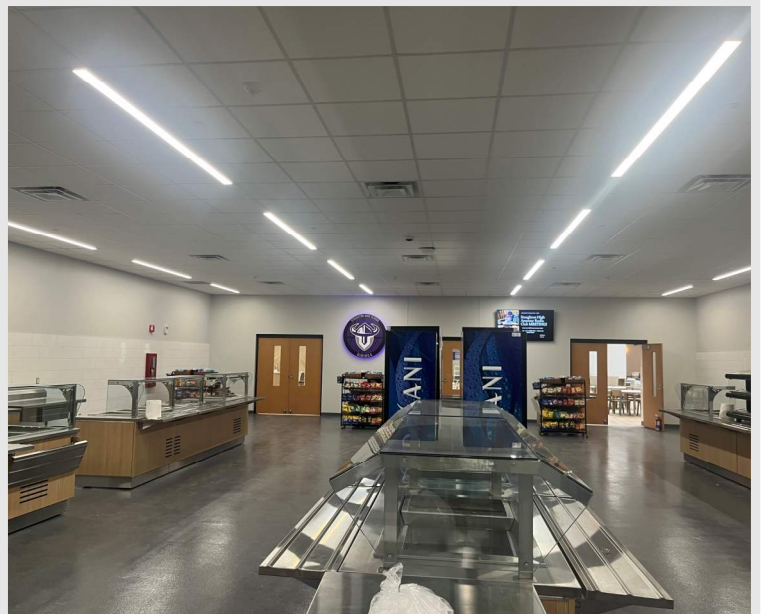
Top Left: a view across the High School Commons following furniture install with new skylights overhead



Top Right: another photo of the High School Commons space capturing the finishes in the newly renovated space



Bottom Left: a photo of the High School Student Lounge that underwent renovations with the Commons space



Bottom Right: a view of the finished Servery space ready for students to return next week

Questions?

Senior Project Manager, Matt Claggett / 608.729.2155 / mclaggett@findorff.com

Findorff
BUILDING & BEYOND



STOUGHTON AREA SCHOOL DISTRICT EXECUTIVE SUMMARY

PROVIDED BY FINDORFF

City of Stoughton, Wisconsin 1/3/2025

River Bluff Campus

At the River Bluff addition, interior finishes continue! Tile kicked-off in the restrooms this week and painting continues in the gym. Mud and tape of the corridor drywall partitions is nearly complete. Installation of the glazing continues as all the punched openings have been completed and storefronts are underway.

In the District Office, renovation work has begun in the second-floor restrooms. Both restrooms will be receiving new plumbing fixtures and finishes including tile, paint, and ceiling replacement. At the exterior of the District Office, Findorff masons have completed the brick masonry on the east elevation of the building and continue setting block for the elevator shaft at the lobby addition. Next week, foundations for the new generator and trash enclosure will begin.



Above: view of the exterior of the River Bluff addition as the winter sunrise hits the completed brick façade

Yahara Site

The Past Few Weeks:

- Surface mounted MEP rough-ins in shop/garage underway
- Ceiling grid install underway in office space
- Paint continues throughout
- Ceramic tile complete in restrooms
- Installation of the FRP doors and aluminum frames underway

Coming Up!:

- Plumbing fixtures to be installed in restrooms
- Epoxy flooring in shop/garage restrooms to begin
- Overhead sectional door install to begin
- Flooring to begin in office space
- Wood doors and hardware to be installed in office space



Above: a photo taken in the Maintenance Building office space highlighting the finishes going into place

Questions?

Senior Project Manager, Matt Claggett / 608.729.2155 / mclaggett@findorff.com

Findorff
BUILDING & BEYOND