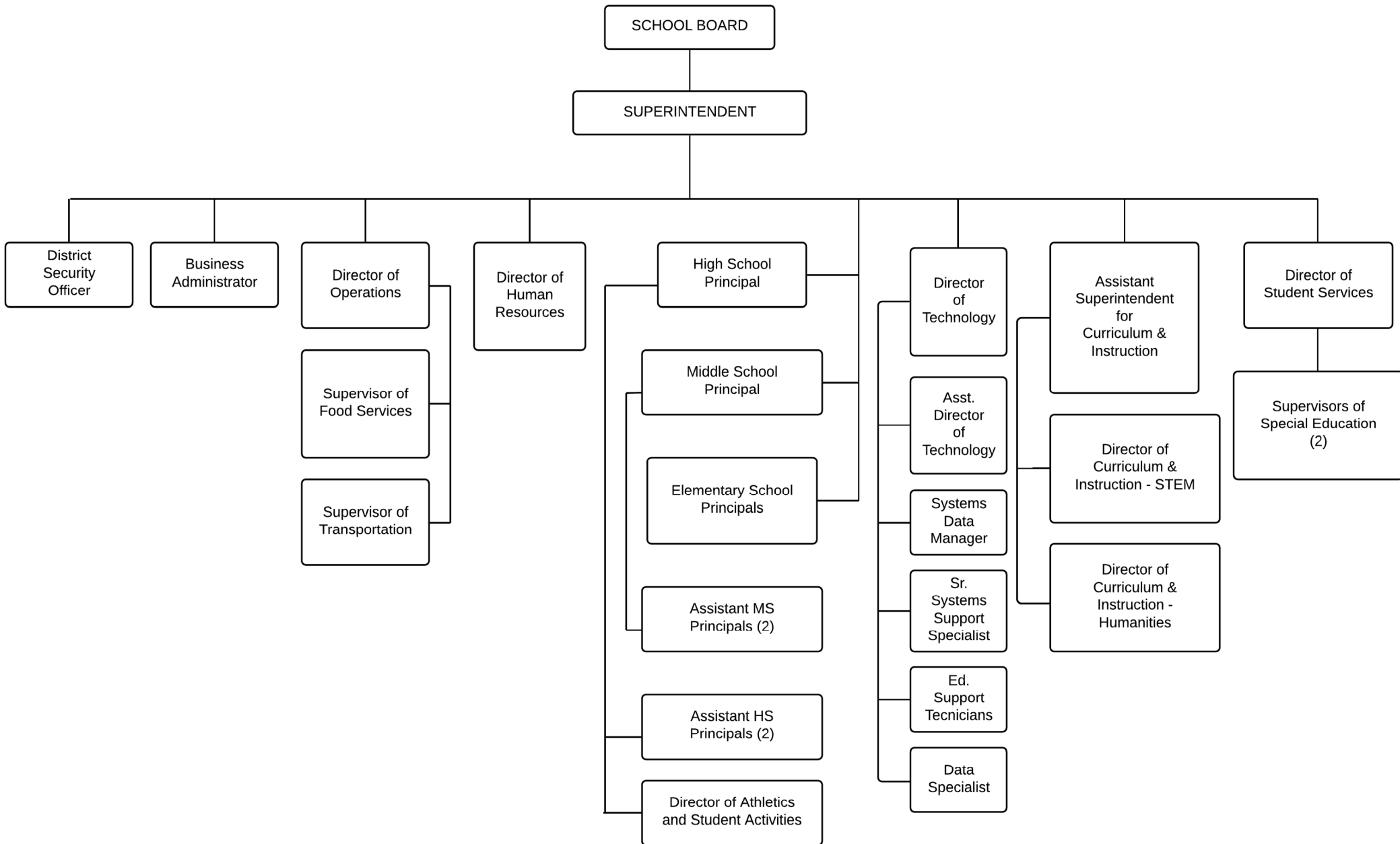


# UPPER MERION AREA SCHOOL DISTRICT ORGANIZATIONAL CHART





Book	Policy Manual
Section	600 Finances
Title	GASB Statement 34
Code	622
Status	Active
Adopted	March 1, 2010

### **Purpose**

The Board recognizes the need to implement the required accounting and financial reporting standards stipulated by the Pennsylvania Department of Education.

The primary objectives of implementing the GASB Statement 34 are to assure compliance with state requirements, and properly account for both the financial and economic resources of the district.

### **Authority**

Participation of the school district in any such activity shall be in accordance with Board policy.[\[1\]](#)[\[2\]](#)

### **Delegation of Responsibility**

The responsibility to coordinate the compilation and preparation of all information necessary to implement this policy is delegated to the Business Administrator.

### **Guidelines**

In order to associate debt with acquired assets and to avoid net asset deficits, any asset that has been acquired with debt proceeds shall be capitalized, regardless of the cost of the asset. The asset life of these assets shall be considered relative to the time of the respective debt amortizations.

For all other assets not acquired by debt proceeds, the dollar value of any single item for inclusion in the fixed assets accounts shall be not less than \$4,000.

The capitalization threshold shall be set at a level that will capture at least eighty percent (80%) of all fixed assets.

The assets listed below do not normally individually meet capitalization threshold criteria:

1. Library books.
2. Classroom texts.
3. Computer equipment.

#### 4. Classroom furniture.

These asset category costs shall be capitalized and depreciated as groups when that group's acquisition cost exceeds the capitalization threshold in any given fiscal year.

For group asset depreciation purposes, the estimated useful life of the group may be based on the weighted average or simple average of the useful life of individual items, or on an assessment of the life of the group as a whole. Periodically, the district shall review the estimated life of groups of assets and adjust the remaining depreciation life of the group.

Assets that fall below the capitalization threshold for GASB 34 reporting purposes may still be significant for insurance, warranty service, and obsolescence/replacement policy tracking purposes. The district may record and maintain these non-GASB 34 asset inventories in subsidiary ledgers.

#### Legal

1. 24 P.S. 218

2. 24 P.S. 613

Governmental Accounting Standards Board, Statement No. 34

<u>Val Number</u>	<u>Description</u>	<u>Justification</u>
16140	<p>REP - Fund 52: Function 9930 has an amount entered as an Extraordinary Item. Provide a description of this Extraordinary Item.</p> <p>REP 9930, Fund 52: \$1,839,259.00</p>	Gain on Discontinued Operations
42420	<p>Expenditure Detail: Total current year 2700-513 expenditure varies from prior year by 10%. Correct the data or enter a justification.</p> <p>2700-513, AFR Exp Detail: \$2,819,517.69 2700-513, PY AFR Amount: \$4,399,036.43</p>	District operations, including transportation shut down March 13, 2020. As a result, transportation expenditures included three less months in 2019-20 as compared to 2018-19, causing a corresponding decrease in expenditures.

Amounts Expressed in Whole Dollars	<u>General Fund</u> <u>(10)</u>	<u>Student Sponsored</u> <u>Activity Fund</u> <u>(21)</u>	<u>Public Purpose Trust</u> <u>(27)</u>	<u>Other Compt Approved</u> <u>(28)</u>	<u>Athletic / Activity</u> <u>(29)</u>
<b>Assets And Deferred Outflows Of Resources</b>					
<b>Assets</b>					
0100 Cash and Cash Equivalents	26,891,735				
0110 Investments	14,206,966				
0120 Taxes Receivable	1,414,608				
0130 Due From Other Funds	580,933				
0141 Due From Other Governments					
0142 State Revenue Receivable	3,769,376				
0143 Federal Revenue Receivable	355,592				
0145 Other Intergovernmental Revenue Receivable					
0146 Due from Primary Government					
0147 Due from Component Unit					
0150 Other Receivables	410,338				
0170 Inventories					
0180 Prepaid Expenses (Expenditures)	567,777				
0190 Other Current Assets					
<b>Total Assets</b>	<b>\$48,197,325</b>				
0910 Deferred Outflows of Resources					
<b>Total Assets And Deferred Outflows Of Resources</b>	<b>\$48,197,325</b>				

Amounts Expressed in Whole Dollars

<u>Capital Reserve (690.</u>	<u>Capital Reserve (1431)</u>	<u>Other Capital Projects</u>	<u>Debt Service</u>	<u>Permanent</u>
<u>1850)</u>	<u>(32)</u>	<u>Fund</u>	<u>(40)</u>	<u>(90)</u>
<u>(31)</u>		<u>(39)</u>		

**Assets And Deferred Outflows Of Resources**

**Assets**

0100 Cash and Cash Equivalents	1,923,785	7,359,672	
0110 Investments	16,500,000	497,550	
0120 Taxes Receivable			
0130 Due From Other Funds	8,000,000		
0141 Due From Other Governments			
0142 State Revenue Receivable			
0143 Federal Revenue Receivable			
0145 Other Intergovernmental Revenue Receivable			
0146 Due from Primary Government			
0147 Due from Component Unit			
0150 Other Receivables			
0170 Inventories			
0180 Prepaid Expenses (Expenditures)			
0190 Other Current Assets			
<b>Total Assets</b>	<b>\$26,423,785</b>	<b>\$7,857,222</b>	
0910 Deferred Outflows of Resources			
<b>Total Assets And Deferred Outflows Of Resources</b>	<b>\$26,423,785</b>	<b>\$7,857,222</b>	

Amounts Expressed in Whole Dollars

**Total Governmental Funds**

**Assets And Deferred Outflows Of Resources**

<b>Assets</b>	
0100 Cash and Cash Equivalents	36,175,192
0110 Investments	31,204,516
0120 Taxes Receivable	1,414,608
0130 Due From Other Funds	8,580,933
0141 Due From Other Governments	
0142 State Revenue Receivable	3,769,376
0143 Federal Revenue Receivable	355,592
0145 Other Intergovernmental Revenue Receivable	
0146 Due from Primary Government	
0147 Due from Component Unit	
0150 Other Receivables	410,338
0170 Inventories	
0180 Prepaid Expenses (Expenditures)	567,777
0190 Other Current Assets	
<b>Total Assets</b>	<b>\$82,478,332</b>
0910 Deferred Outflows of Resources	
<b>Total Assets And Deferred Outflows Of Resources</b>	<b>\$82,478,332</b>

Amounts Expressed in Whole Dollars

	<u>General Fund</u> <u>(10)</u>	<u>Student Sponsored</u> <u>Activity Fund</u> <u>(21)</u>	<u>Public Purpose Trust</u> <u>(27)</u>	<u>Other Compt Approved</u> <u>(28)</u>	<u>Athletic / Activity</u> <u>(29)</u>
<b>Liabilities And Deferred Inflows Of Resources And Fund Balances</b>					
<b>Liabilities</b>					
0400 Due to Other Funds	8,000,000				
0411 Due to Other Governments					
0412 Due to Primary Government					
0413 Due to Component Unit					
0420 Accounts Payable	1,337,544				
0430 Contracts Payable					
0440 Current Portion of Long-Term Debt					
0450 Short-Term Payables					
0461 Accrued Salaries and Benefits	4,091,499				
0462 Payroll Deductions and Withholding	6,858,333				
0480 Unearned Revenues	5,182				
0490 Other Current Liabilities	8,258,987				
<b>Total Liabilities</b>	<b>\$28,551,545</b>				
0950 Deferred Inflows of Resources	879,285				
<b>Fund Balances</b>					
0810 Nonspendable Fund Balance					
0820 Restricted Fund Balance					
0830 Committed Fund Balance					
0840 Assigned Fund Balance	9,800,000				
0850 Unassigned Fund Balance	8,966,495				
<b>Total Fund Balances</b>	<b>\$18,766,495</b>				
<b>Total Liabilities, Deferred Inflows Of Resources And Fund Balances</b>	<b>\$48,197,325</b>				



LEA : 123468402 Upper Merion Area SD

Printed 11/17/2020 11:27:16 AM

Amounts Expressed in Whole Dollars	<u>Capital Reserve (690.</u> <u>1850)</u> <u>(31)</u>	<u>Capital Reserve (1431)</u> <u>(32)</u>	<u>Other Capital Projects</u> <u>Fund</u> <u>(39)</u>	<u>Debt Service</u> <u>(40)</u>	<u>Permanent</u> <u>(90)</u>
<b>Liabilities And Deferred Inflows Of Resources And Fund Balances</b>					
<b>Liabilities</b>					
0400 Due to Other Funds					
0411 Due to Other Governments					
0412 Due to Primary Government					
0413 Due to Component Unit					
0420 Accounts Payable		393,741	29,849		
0430 Contracts Payable					
0440 Current Portion of Long-Term Debt					
0450 Short-Term Payables					
0461 Accrued Salaries and Benefits					
0462 Payroll Deductions and Withholding					
0480 Unearned Revenues					
0490 Other Current Liabilities					
<b>Total Liabilities</b>		<b>\$393,741</b>	<b>\$29,849</b>		
0950 Deferred Inflows of Resources					
<b>Fund Balances</b>					
0810 Nonspendable Fund Balance					
0820 Restricted Fund Balance		26,030,044	7,827,373		
0830 Committed Fund Balance					
0840 Assigned Fund Balance					
0850 Unassigned Fund Balance					
<b>Total Fund Balances</b>		<b>\$26,030,044</b>	<b>\$7,827,373</b>		
<b>Total Liabilities, Deferred Inflows Of Resources And Fund Balances</b>		<b>\$26,423,785</b>	<b>\$7,857,222</b>		

Amounts Expressed in Whole Dollars

**Total Governmental Funds**

**Liabilities And Deferred Inflows Of Resources And Fund Balances**

**Liabilities**

0400 Due to Other Funds	8,000,000
0411 Due to Other Governments	
0412 Due to Primary Government	
0413 Due to Component Unit	
0420 Accounts Payable	1,761,134
0430 Contracts Payable	
0440 Current Portion of Long-Term Debt	
0450 Short-Term Payables	
0461 Accrued Salaries and Benefits	4,091,499
0462 Payroll Deductions and Withholding	6,858,333
0480 Unearned Revenues	5,182
0490 Other Current Liabilities	8,258,987

**Total Liabilities \$28,975,135**

0950 Deferred Inflows of Resources	879,285
------------------------------------	---------

**Fund Balances**

0810 Nonspendable Fund Balance	
0820 Restricted Fund Balance	33,857,417
0830 Committed Fund Balance	
0840 Assigned Fund Balance	9,800,000
0850 Unassigned Fund Balance	8,966,495

**Total Fund Balances \$52,623,912**

**Total Liabilities, Deferred Inflows Of Resources And Fund Balances \$82,478,332**

Amounts Expressed in Whole Dollars	<u>General Fund</u> <u>(10)</u>	<u>Student Sponsored</u> <u>Activity Fund</u> <u>(21)</u>	<u>Public Purpose Trust</u> <u>(27)</u>	<u>Other Compt Approved</u> <u>(28)</u>	<u>Athletic / Activity</u> <u>(29)</u>
<b>Revenues</b>					
6000 Revenue from Local Sources	93,784,390				
7000 Revenue from State Sources	16,138,415				
8000 Revenue from Federal Sources	992,849				
<b>Total Revenues</b>	<b>\$110,915,654</b>				
<b>Expenditures</b>					
1000 Instruction	61,529,383				
2000 Support Services	31,094,955				
3000 Operation of Non-Instructional Services	2,003,161				
4000 Facilities Acquisition, Construction and Improvement Services					
5110 Debt Service	7,558,135				
5130 Refund of Prior Year Revenues / Receipts	290,665				
<b>Total Expenditures</b>	<b>\$102,476,299</b>				
<b>Excess (Deficiency) Of Revenues Over Expenditures</b>	<b>\$8,439,355</b>				
<b>Other Financing Sources (Uses)</b>					
9110 Face Value of Bonds Issued					
9120 Proceeds from Refunding of Bonds					
9130 Bond Premiums					
9200 Proceeds from Extended-Term Financing					
9300 Interfund Transfers - IN	432,264				
9400 Sale of or Compensation for Loss of Fixed Assets	607,757				
9710 Transfers from Component Units					
9720 Transfers from Primary Governments					
9910 Other Financing Sources Not Listed in the 9000 Series					
9990 Insurance Recoveries	140,233				
5120 Debt Service – Refunded Bonds					
5150 Bond Discounts					
5200 Interfund Transfers – Out	8,010,319				
5300 Transfers Out to Component Units/Primary Governments					
<b>Total Other Financing Sources (Uses)</b>	<b>(\$6,830,065)</b>				

Amounts Expressed in Whole Dollars	<u>Capital Reserve (690, 1850) (31)</u>	<u>Capital Reserve (1431) (32) (31)</u>	<u>Other Capital Projects Fund (39)</u>	<u>Debt Service (40)</u>	<u>Permanent (90)</u>
<b>Revenues</b>					
6000 Revenue from Local Sources		252,793	174,296		
7000 Revenue from State Sources					
8000 Revenue from Federal Sources					
<b>Total Revenues</b>		<b>\$252,793</b>	<b>\$174,296</b>		
<b>Expenditures</b>					
1000 Instruction					
2000 Support Services		3,026,066	465		
3000 Operation of Non-Instructional Services		38,335			
4000 Facilities Acquisition, Construction and Improvement Services		28,802	3,197,833		
5110 Debt Service					
5130 Refund of Prior Year Revenues / Receipts					
<b>Total Expenditures</b>		<b>\$3,093,203</b>	<b>\$3,198,298</b>		
<b>Excess (Deficiency) Of Revenues Over Expenditures</b>		<b>(\$2,840,410)</b>	<b>(\$3,024,002)</b>		
<b>Other Financing Sources (Uses)</b>					
9110 Face Value of Bonds Issued					
9120 Proceeds from Refunding of Bonds					
9130 Bond Premiums					
9200 Proceeds from Extended-Term Financing					
9300 Interfund Transfers - IN		8,000,000			
9400 Sale of or Compensation for Loss of Fixed Assets					
9710 Transfers from Component Units					
9720 Transfers from Primary Governments					
9910 Other Financing Sources Not Listed in the 9000 Series					
9990 Insurance Recoveries					
5120 Debt Service – Refunded Bonds					
5150 Bond Discounts					
5200 Interfund Transfers – Out					
5300 Transfers Out to Component Units/Primary Governments					
<b>Total Other Financing Sources (Uses)</b>		<b>\$8,000,000</b>			

Amounts Expressed in Whole Dollars	<u>Total Governmental Funds</u>
<b>Revenues</b>	
6000 Revenue from Local Sources	94,211,479
7000 Revenue from State Sources	16,138,415
8000 Revenue from Federal Sources	992,849
<b>Total Revenues</b>	<b>\$111,342,743</b>
<b>Expenditures</b>	
1000 Instruction	61,529,383
2000 Support Services	34,121,486
3000 Operation of Non-Instructional Services	2,041,496
4000 Facilities Acquisition, Construction and Improvement Services	3,226,635
5110 Debt Service	7,558,135
5130 Refund of Prior Year Revenues / Receipts	290,665
<b>Total Expenditures</b>	<b>\$108,767,800</b>
<b>Excess (Deficiency) Of Revenues Over Expenditures</b>	<b>\$2,574,943</b>
<b>Other Financing Sources (Uses)</b>	
9110 Face Value of Bonds Issued	
9120 Proceeds from Refunding of Bonds	
9130 Bond Premiums	
9200 Proceeds from Extended-Term Financing	
9300 Interfund Transfers - IN	8,432,264
9400 Sale of or Compensation for Loss of Fixed Assets	607,757
9710 Transfers from Component Units	
9720 Transfers from Primary Governments	
9910 Other Financing Sources Not Listed in the 9000 Series	
9990 Insurance Recoveries	140,233
5120 Debt Service – Refunded Bonds	
5150 Bond Discounts	
5200 Interfund Transfers – Out	8,010,319
5300 Transfers Out to Component Units/Primary Governments	
<b>Total Other Financing Sources (Uses)</b>	<b>\$1,169,935</b>

Amounts Expressed in Whole Dollars	<u>General Fund</u> <u>(10)</u>	<u>Student Sponsored</u> <u>Activity Fund</u> <u>(21)</u>	<u>Public Purpose Trust</u> <u>(27)</u>	<u>Other Compt Approved</u> <u>(28)</u>	<u>Athletic / Activity</u> <u>(29)</u>
<b>Special And Extraordinary Items</b>					
9920 Special Items – Gains					
9930 Extraordinary Items – Gains					
5520 Special Items – Losses					
5530 Extraordinary Items – Losses					
<b>Net Change In Fund Balances</b>	<b>\$1,609,290</b>				
<b>Fund Balance</b>					
0001 Fund Balance - Beginning of Fiscal Year	17,157,205				
<b>Fund Balance - End Of Year</b>	<b>\$18,766,495</b>				

Amounts Expressed in Whole Dollars	<u>Capital Reserve (690.</u> <u>1850)</u> <u>(31)</u>	<u>Capital Reserve (1431)</u> <u>(32)</u>	<u>Other Capital Projects</u> <u>Fund</u> <u>(39)</u>	<u>Debt Service</u> <u>(40)</u>	<u>Permanent</u> <u>(90)</u>
<b>Special And Extraordinary Items</b>					
9920 Special Items – Gains					
9930 Extraordinary Items – Gains					
5520 Special Items – Losses					
5530 Extraordinary Items – Losses					
<b>Net Change In Fund Balances</b>		<b>\$5,159,590</b>	<b>(\$3,024,002)</b>		
<b>Fund Balance</b>					
0001 Fund Balance - Beginning of Fiscal Year		20,870,454	10,851,375		
<b>Fund Balance - End Of Year</b>		<b>\$26,030,044</b>	<b>\$7,827,373</b>		

Amounts Expressed in Whole Dollars	<u>Total Governmental Funds</u>
<b>Special And Extraordinary Items</b>	
9920 Special Items – Gains	
9930 Extraordinary Items – Gains	
5520 Special Items – Losses	
5530 Extraordinary Items – Losses	
<b>Net Change In Fund Balances</b>	<b>\$3,744,878</b>
<b>Fund Balance</b>	
0001 Fund Balance - Beginning of Fiscal Year	48,879,034
<b>Fund Balance - End Of Year</b>	<b>\$52,623,912</b>



Amounts Expressed in Whole Dollars	<u>Food Service</u> <u>(51)</u>	<u>Child Care</u> <u>Operations</u> <u>(52)</u>	<u>Other Enterprise</u> <u>(58)</u>	<u>TOTAL</u>	<u>Internal Service</u> <u>(60)</u>
<b>Assets And Deferred Outflows Of Resources</b>					
<b>Current Assets</b>					
0100 Cash and Cash Equivalents	109,597	438,552		548,149	
0110 Investments					
0130 Due From Other Funds					
0141 Due From Other Governments	198,900			198,900	
0142 State Revenue Receivable					
0143 Federal Revenue Receivable					
0146 Due from Primary Government					
0147 Due from Component Unit					
0150 Other Receivables					
0170 Inventories	84,591			84,591	
0180 Prepaid Expenses (Expenditures)					
0190 Other Current Assets					
<b>Total Current Assets</b>	<b>\$393,088</b>	<b>\$438,552</b>		<b>\$831,640</b>	
<b>Noncurrent Assets</b>					
0211 Land					
0212 Site Improvements (Net)					
0220 Buildings and Building Improvements (Net)					
0230 Machinery, Equipment and Furniture (Net)	66,484			66,484	
0250 Construction in Progress					
0260 Long Term Prepayments					
0290 Other Noncurrent Assets					
<b>Total Noncurrent Assets</b>	<b>\$66,484</b>			<b>\$66,484</b>	
0910 Deferred Outflows of Resources	379,030			379,030	
<b>Total Assets And Deferred Outflows Of Resources</b>	<b>\$838,602</b>	<b>\$438,552</b>		<b>\$1,277,154</b>	

Amounts Expressed in Whole Dollars	<u>Food Service</u> <u>(51)</u>	<u>Child Care</u> <u>Operations</u> <u>(52)</u>	<u>Other Enterprise</u> <u>(58)</u>	<u>TOTAL</u>	<u>Internal Service</u> <u>(60)</u>
<b>Liabilities And Deferred Inflows Of Resources And Net Position</b>					
<b>Current Liabilities</b>					
0400 Due to Other Funds	142,381	438,552		580,933	
0411 Due to Other Governments					
0413 Due to Component Unit					
0420 Accounts Payable	1,488			1,488	
0430 Contracts Payable					
0440 Current Portion of Long-Term Debt					
0450 Short-Term Payables					
0461 Accrued Salaries and Benefits	12,143			12,143	
0462 Payroll Deductions and Withholding					
0480 Unearned Revenues	76,588			76,588	
0490 Other Current Liabilities					
<b>Total Current Liabilities</b>	<b>\$232,600</b>	<b>\$438,552</b>		<b>\$671,152</b>	
<b>Noncurrent Liabilities</b>					
0510 Bonds Payable					
0520 Extended-Term Financing Agreements Payable					
0530 Lease-Purchase Obligations					
0540 Accumulated Compensated Absences	30,606			30,606	
0550 Authority Lease Obligations					
0560 Other Post-Employment Benefits (OPEB)	123,064			123,064	
0570 Net Pension Liability	2,052,000			2,052,000	
0599 Other Noncurrent Liabilities					
<b>Total Noncurrent Liabilities</b>	<b>\$2,205,670</b>			<b>\$2,205,670</b>	
<b>Total Liabilities</b>	<b>\$2,438,270</b>	<b>\$438,552</b>		<b>\$2,876,822</b>	
0950 Deferred Inflows of Resources	160,914			160,914	
<b>Net Position</b>					
0791 Net Investment in Capital Assets	66,484			66,484	
0008 Restricted Net Position (0792 – 0798)					
0799 Unrestricted Net Position	(1,827,066)			(1,827,066)	
<b>Total Net Position</b>	<b>(\$1,760,582)</b>			<b>(\$1,760,582)</b>	
<b>Total Liabilities And Deferred Inflows Of Resources And Net Position</b>	<b>\$838,602</b>	<b>\$438,552</b>		<b>\$1,277,154</b>	

Amounts Expressed in Whole Dollars	<u>Food Service</u> <u>(51)</u>	<u>Child Care Operations</u> <u>(52)</u>	<u>Other Enterprise</u> <u>(58)</u>	<u>TOTAL</u>	<u>Internal Service</u> <u>(60)</u>
<b>Operating Revenues</b>					
6600 Food Service Revenue	673,952			673,952	
0071 Charges for Services		149,803		149,803	
0072 Other Operating Revenue					
<b>Total Operating Revenues</b>	<b>\$673,952</b>	<b>\$149,803</b>		<b>\$823,755</b>	
<b>Operating Expenses</b>					
100 Personnel Services – Salaries	741,873	95,918		837,791	
200 Personnel Services – Employee Benefits	546,837	52,101		598,938	
300 Purchased Professional and Technical Services					
400 Purchased Property Services	17,703			17,703	
500 Other Purchased Services	1,599	6,955		8,554	
600 Supplies	753,005	5,680		758,685	
740 Depreciation	9,799			9,799	
810 Dues and Fees	1,748			1,748	
890 Miscellaneous Expenditures					
<b>Total Operating Expenses</b>	<b>\$2,072,564</b>	<b>\$160,654</b>		<b>\$2,233,218</b>	
<b>Operating Income (Loss)</b>	<b>(\$1,398,612)</b>	<b>(\$10,851)</b>		<b>(\$1,409,463)</b>	
<b>Non Operating Revenues (Expenses)</b>					
6500 Earnings on Investments	2,305	3,749		6,054	
6920 Contributions and Donations from Private Sources					
6930 Gains or Losses on Sale of Fixed Assets					
6991 Refunds of a Prior Year Expenditure					
7000 Revenue from State Sources	200,379	13,477		213,856	
8000 Revenue from Federal Sources	1,098,000			1,098,000	
9990 Insurance Recoveries					
820 Claims and Judgments Against the LEA					
830 Interest					
<b>TOTAL Non Operating Revenues (Expenses)</b>	<b>\$1,300,684</b>	<b>\$17,226</b>		<b>\$1,317,910</b>	
<b>Income (Loss) Before Contributions And Transfers</b>	<b>(\$97,928)</b>	<b>\$6,375</b>		<b>(\$91,553)</b>	

Amounts Expressed in Whole Dollars	<u>Food Service</u> <u>(51)</u>	<u>Child Care Operations</u> <u>(52)</u>	<u>Other Enterprise</u> <u>(58)</u>	<u>TOTAL</u>	<u>Internal Service</u> <u>(60)</u>
<b>Contributions, Transfers, and Special and Extraordinary Items</b>					
5200 Interfund Transfers – Out		432,264		432,264	
5300 Transfers Out to Component Units/Primary Governments					
5520 Special Items – Losses					
5530 Extraordinary Items – Losses					
9300 Interfund Transfers - IN	10,319			10,319	
9500 Capital Contributions					
9700 Transfers IN From Component Units/Primary Governments					
9920 Special Items – Gains					
9930 Extraordinary Items – Gains		1,839,259		1,839,259	
<b>Change In Net Position</b>	<b>(\$87,609)</b>	<b>\$1,413,370</b>		<b>\$1,325,761</b>	
0002 Net Position - Beginning of Fiscal Year	(1,672,969)	(1,413,370)		(3,086,339)	
0003 Accounting Changes / Residual Equity Transfers					
<b>Net Position - End Of Year</b>	<b>(\$1,760,578)</b>			<b>(\$1,760,578)</b>	

Amounts Expressed in Whole Dollars	<u>Food Service</u> <u>(51)</u>	<u>Child Care Operations</u> <u>(52)</u>	<u>Other Enterprise</u> <u>(58)</u>	<u>TOTAL</u>	<u>Internal Service(60)</u>
<b>Cash Flows From Operating Activities</b>					
0011 Cash Receipts From Users	692,883	149,803		842,686	
0012 Cash Receipts From Assessments Made to Other Funds					
0013 Cash Receipts From Earnings on Investments					
0014 Cash Receipts From Other Operating Revenue					
0015 Cash Payments To Employees For Services	1,264,641	218,844		1,483,485	
0016 Cash Payments For Insurance Claims					
0017 Cash Payments To Suppliers For Goods and Services	647,276	145,103		792,379	
0018 Cash Payments For Other Operating Expenses					
<b>Net Cash Provided By (Used For) Operating Activities</b>	<b>(\$1,219,034)</b>	<b>(\$214,144)</b>		<b>(\$1,433,178)</b>	
<b>Cash Flows From Non-Capital Financing Activities</b>					
0021 Receipts From Local Sources - 6000					
0022 Receipts From State Sources - 7000	184,857	18,227		203,084	
0023 Receipts From Federal Sources -8000	930,783			930,783	
0024 Notes and Loans Received (Repaid)					
0025 Interest Paid on Notes/Loans - 5100-830					
0026 Operating Transfers In (Out)/Residual Equity Trans					
0027 Operating Transfers In (Out) Primary Government / Comp Unit	10,319			10,319	
0028 Receipts From Refund of Prior Year Expenditures - 6991					
0029 Special and Extraordinary Gains (losses)					
0030 Receipts from Insurance Recoveries -9990					
<b>Net Cash Prov By (Used for) Non-Capital Financing Activities</b>	<b>\$1,125,959</b>	<b>\$18,227</b>		<b>\$1,144,186</b>	
<b>Cash Flows From Capital and Related Financing Activities</b>					
0031 Payments For Fac Acq, Const, and Imp - 4000					
0032 Gain / (Loss) on Sale of Fixed Assets - 6930					
0033 Proceeds From Extended Term Financing - 9200					
0034 Principal Paid on Financing Agreements					
0035 Interest Paid on Financing Agreements - 5100-830					
0036 (Inc) Dec in Contributed Capital					
<b>Net Cash Prov By (Used for) Capital and Related Financing Activities</b>					
<b>Cash Flows From Investing Activities</b>					
0041 Earnings on Investments - 6500	2,305	3,749		6,054	
0042 Purchase of Inv Securities / Deposits to Inv Pools					
0043 Receipts From Investment Pool Withdrawals					
0044 Proceeds from Sale and Maturity of Inv Securities					

LEA : 123468402 Upper Merion Area SD

Printed 11/17/2020 11:28:39 AM

0045 Loans Received (Paid)

<b>Net Cash Prov By (Used for) Investing Activities</b>	<b>\$2,305</b>	<b>\$3,749</b>	<b>\$6,054</b>
---	----------------	----------------	----------------

	<u>Food Service</u> <u>(51)</u>	<u>Child Care Operations</u> <u>(52)</u>	<u>Other Enterprise</u> <u>(58)</u>	<u>TOTAL</u>	<u>Internal Service</u> <u>(60)</u>
<b>Net Increase (Decrease) in Cash Flows</b>	<b>(90,770)</b>	<b>(192,168)</b>		<b>(282,938)</b>	
0004 Cash and Cash Equivalents Beginning of Year	200,367	630,720		831,087	
<b>Cash and Cash Equivalents at Year End</b>	<b>\$109,597</b>	<b>\$438,552</b>		<b>\$548,149</b>	

**Reconciliation of Operating Income (Loss) To Net Cash Provided by (Used For) Operating Activities**

0005 Operating Income (Loss) per REP	(1,398,612)	(10,851)		(1,409,463)	
<b>Adjustments</b>					
0051 Depreciation and Net Amortization	9,799			9,799	
0052 Provision for Uncollectible Accounts					
0053 Other Adjustments	169,723	2,517		172,240	
<b>Effect of Changes in Assets, Liabilities, Deferred Outflows and Deferred Inflows</b>					
0054 (Inc) Dec In Accounts Receivable (0120-0150)					
0055 Advances to Other Funds (0160)					
0056 (Inc) Dec in Inventories (0170)	(9,373)			(9,373)	
0057 (Inc) Dec in Prepaid Expenses (0180)					
0058 (Inc) Dec in Other Current or Noncurrent Assets					
0064 Deferred Outflows (0910)					
0059 Inc (Dec) in Accounts Payable (0400-0450)	1,110	(8,251)		(7,141)	
0060 Inc (Dec) in Accrued Salaries/Benefits (0461)	(6,055)	(32,623)		(38,678)	
0065 Inc (Dec) in Net Pension Liabilities (0570)					
0066 Inc (Dec) in Other Postemp Benefit Oblig (0560)					
0061 Inc (Dec) in Payroll Deductions/Withholding (0462)					
0062 Inc (Dec) in Unearned Revenue (0480)	18,931	(132,469)		(113,538)	
0063 Inc (Dec) in Other Current or Noncurrent Liabilities	(4,553)	(32,467)		(37,020)	
0067 Deferred Inflows (0950)					
<b>Total Adjustments</b>	<b>\$179,582</b>	<b>(\$203,293)</b>		<b>(\$23,711)</b>	
<b>Cash Provided By (Used for) Total</b>	<b>(\$1,219,030)</b>	<b>(\$214,144)</b>		<b>(\$1,433,174)</b>	

COMBINED STATEMENT OF CASH FLOWS  
SCHEDULE OF NONCASH INVESTING, CAPITAL, AND FINANCING ACTIVITIES

Explanation of Transaction and Balance Sheet Effect	Amount
Donated Foods	126,547
<b>Total</b>	<b>\$126,547</b>



LEA : 123468402 Upper Merion Area SD

Printed 11/17/2020 11:28:42 AM

Amounts Expressed in Whole Dollars

Private Purpose Trust  
(71)

Investment Trust  
(72)

Pension Trust  
(73)

Student Activity Custodial  
(81)

**Assets And Deferred Outflows Of Resources**

<b>Assets</b>	
0100 Cash and Cash Equivalents	146,040
0110 Investments	
0130 Due From Other Funds	
0140 Due from Other Governments, Primary Government and Component Units	
0150 Other Receivables	
0170 Inventories	
0180 Prepaid Expenses (Expenditures)	
0190 Other Current Assets	
0220 Buildings and Building Improvements (Net)	
0230 Machinery, Equipment and Furniture (Net)	
<b>Total Assets</b>	<b>\$146,040</b>
0910 Deferred Outflows of Resources	
<b>Total Assets And Deferred Outflows Of Resources</b>	<b>\$146,040</b>

LEA : 123468402 Upper Merion Area SD

Printed 11/17/2020 11:28:42 AM

Amounts Expressed in Whole Dollars	<u>Other Custodial</u> <u>(89)</u>	<u>Fiduciary Component Units</u> <u>(98)</u>	<u>Total Fiduciary Funds</u>
<b>Assets And Deferred Outflows Of Resources</b>			
<b>Assets</b>			
0100 Cash and Cash Equivalents	581,403		727,443
0110 Investments			
0130 Due From Other Funds			
0140 Due from Other Governments, Primary Government and Component Units			
0150 Other Receivables			
0170 Inventories			
0180 Prepaid Expenses (Expenditures)			
0190 Other Current Assets			
0220 Buildings and Building Improvements (Net)			
0230 Machinery, Equipment and Furniture (Net)			
<b>Total Assets</b>	<b>\$581,403</b>		<b>\$727,443</b>
0910 Deferred Outflows of Resources			
<b>Total Assets And Deferred Outflows Of Resources</b>	<b>\$581,403</b>		<b>\$727,443</b>

LEA : 123468402 Upper Merion Area SD

Printed 11/17/2020 11:28:42 AM

Amounts Expressed in Whole Dollars

Private Purpose Trust  
(71)

Investment Trust  
(72)

Pension Trust  
(73)

Student Activity Custodial  
(81)

**Liabilities, Deferred Inflows Of Resources And Net Position**

**Liabilities**

- 0400 Due to Other Funds
- 0410 Due to Other Governments, Primary Government and Component Units
- 0420 Accounts Payable
- 0430 Contracts Payable
- 0450 Short-Term Payables
- 0460 Payroll Accruals and Withholdings
- 0480 Unearned Revenues
- 0490 Other Current Liabilities

**Total Liabilities**

- 0950 Deferred Inflows of Resources

**Net Position**

- 0791 Net Investment in Capital Assets
- 0009 Restricted Net Position (0792 – 0798)
- 0799 Unrestricted Net Position 146,040

**Total Net Position \$146,040**

**Total Liabilities, Deferred Inflows Of Resources And Net Position \$146,040**

LEA : 123468402 Upper Merion Area SD

Printed 11/17/2020 11:28:42 AM

Amounts Expressed in Whole Dollars

Other Custodial  
(89)

Fiduciary Component Units  
(98)

Total Fiduciary Funds

**Liabilities, Deferred Inflows Of Resources And Net Position**

**Liabilities**

0400 Due to Other Funds		
0410 Due to Other Governments, Primary Government and Component Units		
0420 Accounts Payable		
0430 Contracts Payable		
0450 Short-Term Payables		
0460 Payroll Accruals and Withholdings		
0480 Unearned Revenues		
0490 Other Current Liabilities	581,403	581,403

<b>Total Liabilities</b>	<b>\$581,403</b>	<b>\$581,403</b>
--------------------------	------------------	------------------

0950 Deferred Inflows of Resources

**Net Position**

0791 Net Investment in Capital Assets		
0009 Restricted Net Position (0792 – 0798)		
0799 Unrestricted Net Position		146,040

<b>Total Net Position</b>		<b>\$146,040</b>
---------------------------	--	------------------

<b>Total Liabilities, Deferred Inflows Of Resources And Net Position</b>	<b>\$581,403</b>	<b>\$727,443</b>
--	------------------	------------------

Amounts Expressed in Whole Dollars	<u>Private Purpose Trust</u> (71)	<u>Investment Trust</u> (72)	<u>Pension Trust</u> (73)	<u>Student Activity</u> <u>Custodial</u> (81)	<u>Other Custodial</u> (89)	<u>Fiduciary Component</u> <u>Units</u> (98)
<b>Additions</b>						
0091 Gifts and Contributions	21,183					
0095 Net Investment Earnings	1,012					
0092 Other Additions						
<b>Deductions</b>						
0093 Scholarships Awarded	35,600					
0094 Other Deductions						
<b>Change In Net Position</b>	<b>(\$13,405)</b>					
0006 Net Position – Beginning of Fiscal Year	159,445					
0007 Net Position Held in Trust for Pension Benefits						
<b>Net Position - End of Fiscal Year</b>	<b>\$146,040</b>					

Amounts Expressed in Whole Dollars	<u>Total Fiduciary Funds</u>
<b>Additions</b>	
0091 Gifts and Contributions	21,183
0095 Net Investment Earnings	1,012
0092 Other Additions	
<b>Deductions</b>	
0093 Scholarships Awarded	35,600
0094 Other Deductions	
<b>Change in Net Position</b>	<b>(\$13,405)</b>
0006 Net Position – Beginning of Fiscal Year	159,445
0007 Net Position Held in Trust for Pension Benefits	
<b>Net Position - End of Fiscal Year</b>	<b>\$146,040</b>

	<u>Revenue Reported In Current Year</u>	<u>Current Year Tax Accrual</u>	<u>Prior Year Tax Accrual</u>	<u>Taxes Collected In Current Year</u>
<b><u>Revenue from Local Sources</u></b>				
6111 Current Real Estate Taxes	84,318,511.64			84,318,511.64
6112 Interim Real Estate Taxes	2,641,698.15			2,641,698.15
6113 Public Utility Realty Taxes	73,928.34			73,928.34
6114 Payments in Lieu of Current Taxes - State / Local	114,867.41			114,867.41
6143 Current Act 511 Local Services Taxes	257,652.15			257,652.15
6153 Current Act 511 Real Estate Transfer Taxes	2,626,245.73			2,626,245.73
6154 Current Act 511 Amusement Taxes	309,404.67			309,404.67
6411 Delinquent Real Estate Taxes	926,901.81			926,901.81
6440 Delinquent Local Enabling Taxes - Flat Rate Assessments	2,240.48			2,240.48
6500 Earnings on Investments	1,115,652.52			
6700 Revenues from LEA Activities	20,529.25			
6832 Federal IDEA Revenue Received as Pass Through	642,401.14			
6910 Rentals	332,759.09			
6942 Summer School Tuition	15,070.00			
6949 Other Tuition from Patrons	0.01			
6991 Refunds of a Prior Year Expenditure	183,200.55			
6999 Other Revenues Not Specified Above	203,327.00			
<b>TOTAL Revenue from Local Sources</b>	<b>\$93,784,389.94</b>			<b>\$91,271,450.38</b>

**Revenue Reported  
In Current Year**

**Revenue from State Sources**

7111 Basic Education Funding-Formula	2,580,728.46		
7112 Basic Education Funding-Social Security	1,771,549.48		
7271 Special Education funds for School-Aged Pupils	1,457,263.94		
7311 Pupil Transportation Subsidy	771,589.72		
7312 Nonpublic and Charter School Pupil Transportation Subsidy	226,380.00		
7320 Rental and Sinking Fund Payments / Building Reimbursement Subsidy	261,771.99		
7330 Health Services (Medical, Dental, Nurse, Act 25)	82,805.77		
7340 State Property Tax Reduction Allocation	611,346.62		
7505 Ready to Learn Block Grant	137,324.00		
7820 State Share of Retirement Contributions	8,237,655.39		
<b>TOTAL Revenue from State Sources</b>	<b>\$16,138,415.37</b>		



**Revenue Reported  
In Current Year**

**Revenue from Federal Sources**

8514 NCLB, Title I - Improving the Academic Achievement of the Disadvantaged	412,714.34		
8515 NCLB, Title II - Preparing, Training and Recruiting High Quality Teachers and Principals	93,061.09		
8516 NCLB, Title III - Language Instruction for Limited English Proficient and Immigrant Students	49,033.70		
8517 NCLB, Title IV - 21St Century Schools	32,686.79		
8741 Elementary and Secondary School Emergency Relief Fund (ESSER)	17,012.98		
8749 Other CARES Act Funding	265,119.00		
8810 School-Based Access Medicaid Reimbursement Program (SBAP) Reimbursements (Access)	100,000.00		
8820 Medical Assistance Reimbursement for Administrative Claiming (Quarterly) Program	23,221.45		
<b>TOTAL Revenue from Federal Sources</b>	<b>\$992,849.35</b>		

	<b>Revenue Reported In Current Year</b>			
<b><u>Other Financing Sources</u></b>				
9350 Enterprise Fund Transfers	432,264.00			
9400 Sale of or Compensation for Loss of Fixed Assets	607,757.30			
9990 Insurance Recoveries	140,232.69			
<b>TOTAL Other Financing Sources</b>	<b>\$1,180,253.99</b>			
<b>TOTAL FROM ALL SOURCES</b>	<b>\$112,095,908.65</b>			<b>\$91,271,450.38</b>

LEA : 123468402 Upper Merion Area SD

Printed 11/17/2020 11:28:54 AM

	<u>General Fund (10)</u>	<u>Student Sponsored Activity Fund (21)</u>	<u>Public Purpose Trust (27)</u>	<u>Other Compt Approved (28)</u>	<u>Athletic / Activity (29)</u>	<u>Capital Reserve (690, 1850) (31)</u>
<b>6000 Revenue from Local Sources</b>						
6111 Current Real Estate Taxes	84,318,511.64					
6112 Interim Real Estate Taxes	2,641,698.15					
6113 Public Utility Realty Taxes	73,928.34					
6114 Payments in Lieu of Current Taxes - State / Local	114,867.41					
6143 Current Act 511 Local Services Taxes	257,652.15					
6153 Current Act 511 Real Estate Transfer Taxes	2,626,245.73					
6154 Current Act 511 Amusement Taxes	309,404.67					
6411 Delinquent Real Estate Taxes	926,901.81					
6440 Delinquent Local Enabling Taxes - Flat Rate Assessments	2,240.48					
6500 Earnings on Investments	1,115,652.52					
6700 Revenues from LEA Activities	20,529.25					
6832 Federal IDEA Revenue Received as Pass Through	642,401.14					
6910 Rentals	332,759.09					
6942 Summer School Tuition	15,070.00					
6949 Other Tuition from Patrons	0.01					
6991 Refunds of a Prior Year Expenditure	183,200.55					
6999 Other Revenues Not Specified Above	203,327.00					
<b>6000 Total Revenue from Local Sources</b>	<b>\$93,784,389.94</b>					
<b>7000 Revenue from State Sources</b>						
7111 Basic Education Funding-Formula	2,580,728.46					
7112 Basic Education Funding-Social Security	1,771,549.48					
7271 Special Education funds for School-Aged Pupils	1,457,263.94					
7311 Pupil Transportation Subsidy	771,589.72					
7312 Nonpublic and Charter School Pupil Transportation Subsidy	226,380.00					
7320 Rental and Sinking Fund Payments / Building Reimbursement Subsidy	261,771.99					
7330 Health Services (Medical, Dental, Nurse, Act 25)	82,805.77					
7340 State Property Tax Reduction Allocation	611,346.62					
7505 Ready to Learn Block Grant	137,324.00					
7820 State Share of Retirement Contributions	8,237,655.39					
<b>7000 Total Revenue from State Sources</b>	<b>\$16,138,415.37</b>					
<b>8000 Revenue from Federal Sources</b>						
8514 NCLB, Title I - Improving the Academic Achievement of the Disadvantaged	412,714.34					
8515 NCLB, Title II - Preparing, Training and Recruiting High Quality Teachers and Principals	93,061.09					
8516 NCLB, Title III - Language Instruction for Limited English Proficient and Immigrant Students	49,033.70					

LEA : 123468402 Upper Merion Area SD

Printed 11/17/2020 11:28:54 AM

	<u>Capital Reserve</u> <u>(1431) (32)</u>	<u>Other Capital</u> <u>Projects Fund (39)</u>	<u>Debt Service (40)</u>	<u>Permanent (90)</u>	<u>Total</u>
<b>6000 Revenue from Local Sources</b>					
6111 Current Real Estate Taxes					84,318,511.64
6112 Interim Real Estate Taxes					2,641,698.15
6113 Public Utility Realty Taxes					73,928.34
6114 Payments in Lieu of Current Taxes - State / Local					114,867.41
6143 Current Act 511 Local Services Taxes					257,652.15
6153 Current Act 511 Real Estate Transfer Taxes					2,626,245.73
6154 Current Act 511 Amusement Taxes					309,404.67
6411 Delinquent Real Estate Taxes					926,901.81
6440 Delinquent Local Enabling Taxes - Flat Rate Assessments					2,240.48
6500 Earnings on Investments	252,793.01	174,296.00			1,542,741.53
6700 Revenues from LEA Activities					20,529.25
6832 Federal IDEA Revenue Received as Pass Through					642,401.14
6910 Rentals					332,759.09
6942 Summer School Tuition					15,070.00
6949 Other Tuition from Patrons					0.01
6991 Refunds of a Prior Year Expenditure					183,200.55
6999 Other Revenues Not Specified Above					203,327.00
<b>6000 Total Revenue from Local Sources</b>	<b>\$252,793.01</b>	<b>\$174,296.00</b>			<b>\$94,211,478.95</b>
<b>7000 Revenue from State Sources</b>					
7111 Basic Education Funding-Formula					2,580,728.46
7112 Basic Education Funding-Social Security					1,771,549.48
7271 Special Education funds for School-Aged Pupils					1,457,263.94
7311 Pupil Transportation Subsidy					771,589.72
7312 Nonpublic and Charter School Pupil Transportation Subsidy					226,380.00
7320 Rental and Sinking Fund Payments / Building Reimbursement Subsidy					261,771.99
7330 Health Services (Medical, Dental, Nurse, Act 25)					82,805.77
7340 State Property Tax Reduction Allocation					611,346.62
7505 Ready to Learn Block Grant					137,324.00
7820 State Share of Retirement Contributions					8,237,655.39
<b>7000 Total Revenue from State Sources</b>					<b>\$16,138,415.37</b>
<b>8000 Revenue from Federal Sources</b>					
8514 NCLB, Title I - Improving the Academic Achievement of the Disadvantaged					412,714.34
8515 NCLB, Title II - Preparing, Training and Recruiting High Quality Teachers and Principals					93,061.09
8516 NCLB, Title III - Language Instruction for Limited English Proficient and Immigrant Students					49,033.70

LEA : 123468402 Upper Merion Area SD

Printed 11/17/2020 11:28:54 AM

	<u>General Fund (10)</u>	<u>Student Sponsored Activity Fund (21)</u>	<u>Public Purpose Trust (27)</u>	<u>Other Compt Approved (28)</u>	<u>Athletic / Activity (29)</u>	<u>Capital Reserve (690, 1850) (31)</u>
<b>8000 Revenue from Federal Sources</b>						
8517 NCLB, Title IV - 21st Century Schools	32,686.79					
8741 Elementary and Secondary School Emergency Relief Fund (ESSER)	17,012.98					
8749 Other CARES Act Funding	265,119.00					
8810 School-Based Access Medicaid Reimbursement Program (SBAP) Reimbursements (Access)	100,000.00					
8820 Medical Assistance Reimbursement for Administrative Claiming (Quarterly) Program	23,221.45					
<b>8000 Total Revenue from Federal Sources</b>	<b>\$992,849.35</b>					
<b>9000 Other Financing Sources</b>						
9310 General Fund Transfers						
9350 Enterprise Fund Transfers	432,264.00					
9400 Sale of or Compensation for Loss of Fixed Assets	607,757.30					
9990 Insurance Recoveries	140,232.69					
<b>9000 Total Other Financing Sources</b>	<b>\$1,180,253.99</b>					
<b>Total From All Sources</b>	<b>\$112,095,908.65</b>					

LEA : 123468402 Upper Merion Area SD

Printed 11/17/2020 11:28:54 AM

	<u>Capital Reserve</u> <u>(1431) (32)</u>	<u>Other Capital</u> <u>Projects Fund (39)</u>	<u>Debt Service (40)</u>	<u>Permanent (90)</u>	<u>Total</u>
<b>8000 Revenue from Federal Sources</b>					
8517 NCLB, Title IV - 21st Century Schools					32,686.79
8741 Elementary and Secondary School Emergency Relief Fund (ESSER)					17,012.98
8749 Other CARES Act Funding					265,119.00
8810 School-Based Access Medicaid Reimbursement Program (SBAP) Reimbursements (Access)					100,000.00
8820 Medical Assistance Reimbursement for Administrative Claiming (Quarterly) Program					23,221.45
<b>8000 Total Revenue from Federal Sources</b>					<b>\$992,849.35</b>
<b>9000 Other Financing Sources</b>					
9310 General Fund Transfers	8,000,000.00				8,000,000.00
9350 Enterprise Fund Transfers					432,264.00
9400 Sale of or Compensation for Loss of Fixed Assets					607,757.30
9990 Insurance Recoveries					140,232.69
<b>9000 Total Other Financing Sources</b>	<b>\$8,000,000.00</b>				<b>\$9,180,253.99</b>
<b>Total From All Sources</b>	<b>\$8,252,793.01</b>	<b>\$174,296.00</b>			<b>\$120,522,997.66</b>

	<u>General Fund (10)</u>	<u>Student Sponsored Activity Fund (21)</u>	<u>Public Purpose Trust (27)</u>	<u>Other Compt Approved (28)</u>	<u>Athletic / Activity (29)</u>	<u>Capital Reserve (690, 1850) (31)</u>
Revenue from Local Sources	93,784,389.94					
Revenue from State Sources	16,138,415.37					
Revenue from Federal Sources	992,849.35					
Other Financing Sources	1,180,253.99					
<b>Total From All Sources</b>	<b>\$112,095,908.65</b>					

	<u>Capital Reserve (1431)</u> <u>(32)</u>	<u>Other Capital Projects</u> <u>Fund (39)</u>	<u>Debt Service (40)</u>	<u>Permanent (90)</u>	<u>Total</u>
Revenue from Local Sources	252,793.01	174,296.00			94,211,478.95
Revenue from State Sources					16,138,415.37
Revenue from Federal Sources					992,849.35
Other Financing Sources	8,000,000.00				9,180,253.99
<b>Total From All Sources</b>	<b>\$8,252,793.01</b>	<b>\$174,296.00</b>			<b>\$120,522,997.66</b>



**General Fund (10)**

	<u>Total</u>
<b>1000 Instruction</b>	
<b>100 Personnel Services – Salaries</b>	
100 Personnel Services – Salaries	34,307,134.09
<b>Total Personnel Services – Salaries</b>	<b>\$34,307,134.09</b>
<b>200 Personnel Services – Employee Benefits</b>	
210 Group Insurance – Contracted Provider	219,988.75
220 Social Security Contributions	2,522,700.91
230 PSERS Retirement Contributions	11,610,319.66
250 Unemployment Compensation	5,922.76
260 Workers' Compensation	237,380.90
270 Group Insurance – Self-Insurance	4,886,289.88
291 Other Retirement Plans	65.94
<b>Total Personnel Services – Employee Benefits</b>	<b>\$19,482,668.80</b>
<b>300 Purchased Professional and Technical Services</b>	
322 Professional Educational Services – Ius	664,476.23
323 Professional Educational Services – Other Educational Agencies	647,708.77
329 Professional Educational Services – Other	421,478.77
330 Other Professional Services	18,343.00
390 Other Purchased Professional and Technical Services	625.00
<b>Total Purchased Professional and Technical Services</b>	<b>\$1,752,631.77</b>
<b>400 Purchased Property Services</b>	
430 Repairs and Maintenance Services	8,859.05
<b>Total Purchased Property Services</b>	<b>\$8,859.05</b>
<b>500 Other Purchased Services</b>	
530 Communications	2,059.79
561 Tuition To Other School Districts Within the State	110,372.85
562 Tuition To Pennsylvania Charter Schools	1,144,594.38
564 Tuition To Career and Technology Centers	1,956,041.76
567 Tuition To Approved Private Schools (APS) and PA Chartered Schools for the Deaf and Blind	1,201,680.21
568 Tuition To Private Residential Rehabilitative Institutions (PRRI) [In-State] and Detention Centers	97,981.91
569 Tuition – Other	956,629.26
580 Travel	5,036.50
594 IU Payment By Withholding for Institutionalized Children's Programs – Special Classes	630.51
<b>Total Other Purchased Services</b>	<b>\$5,475,027.17</b>
<b>600 Supplies</b>	
610 General Supplies	361,454.73
630 Food	468.77
640 Books and Periodicals	91,809.56
650 Supplies & Fees – Technology Related	5,942.10
<b>Total Supplies</b>	<b>\$459,675.16</b>
<b>700 Property</b>	
752 Capital Equipment – Original and Additional	23,333.33
762 Capitalized Equipment - Replacement	16,855.99
<b>Total Property</b>	<b>\$40,189.32</b>

LEA : 123468402 Upper Merion Area SD

Printed 11/17/2020 11:29:07 AM

**General Fund (10)**

<b>1000 Instruction</b>	<u><b>Total</b></u>
<b>800 Other Objects</b>	
810 Dues and Fees	3,197.50
<b>Total Other Objects</b>	<b>\$3,197.50</b>
<b>Total 1000 Instruction</b>	<b>\$61,529,382.86</b>

**General Fund (10)**

**1100 Regular Programs – Elementary / Secondary**

	<u>Elementary</u>	<u>Secondary</u>	<u>Federal</u>	<u>Total</u>
<b>100 Personnel Services – Salaries</b>				
100 Personnel Services – Salaries	14,843,802.18	10,630,504.69	318,928.20	25,793,235.07
<b>Total Personnel Services – Salaries</b>	<b>\$14,843,802.18</b>	<b>\$10,630,504.69</b>	<b>\$318,928.20</b>	<b>\$25,793,235.07</b>
<b>200 Personnel Services – Employee Benefits</b>				
210 Group Insurance – Contracted Provider	115,499.86	61,716.59	(388.44)	176,828.01
220 Social Security Contributions	1,094,073.40	779,516.51	23,766.17	1,897,356.08
230 PSERS Retirement Contributions	5,045,538.65	3,567,392.01	109,662.05	8,722,592.71
250 Unemployment Compensation	2,794.73	1,052.53		3,847.26
260 Workers' Compensation	90,133.91	79,979.06		170,112.97
270 Group Insurance – Self-Insurance	2,060,886.09	1,321,305.48	49,278.29	3,431,469.86
<b>Total Personnel Services – Employee Benefits</b>	<b>\$8,408,926.64</b>	<b>\$5,810,962.18</b>	<b>\$182,318.07</b>	<b>\$14,402,206.89</b>
<b>300 Purchased Professional and Technical Services</b>				
323 Professional Educational Services – Other Educational Agencies	209,431.97	129,157.31		338,589.28
329 Professional Educational Services – Other	400.00	7,461.00	12,298.10	20,159.10
390 Other Purchased Professional and Technical Services		625.00		625.00
<b>Total Purchased Professional and Technical Services</b>	<b>\$209,831.97</b>	<b>\$137,243.31</b>	<b>\$12,298.10</b>	<b>\$359,373.38</b>
<b>400 Purchased Property Services</b>				
430 Repairs and Maintenance Services	3,082.35	4,501.70		7,584.05
<b>Total Purchased Property Services</b>	<b>\$3,082.35</b>	<b>\$4,501.70</b>		<b>\$7,584.05</b>
<b>500 Other Purchased Services</b>				
561 Tuition To Other School Districts Within the State		9,225.40		9,225.40
562 Tuition To Pennsylvania Charter Schools	292,759.42	654,175.10		946,934.52
568 Tuition To Private Residential Rehabilitative Institutions (PRRI) [In-State] and Detention Centers		18,064.50		18,064.50
569 Tuition – Other		657,019.86		657,019.86
580 Travel	155.23	1,246.03		1,401.26
<b>Total Other Purchased Services</b>	<b>\$292,914.65</b>	<b>\$1,339,730.89</b>		<b>\$1,632,645.54</b>
<b>600 Supplies</b>				
610 General Supplies	129,552.50	101,532.30	43,323.71	274,408.51
630 Food			468.77	468.77
640 Books and Periodicals	46,692.09	30,946.98		77,639.07
650 Supplies & Fees – Technology Related	(34.94)	407.04		372.10
<b>Total Supplies</b>	<b>\$176,209.65</b>	<b>\$132,886.32</b>	<b>\$43,792.48</b>	<b>\$352,888.45</b>
<b>700 Property</b>				
752 Capital Equipment – Original and Additional	4,847.08	14,061.12		18,908.20
762 Capitalized Equipment - Replacement	8,500.79	4,859.20		13,359.99
<b>Total Property</b>	<b>\$13,347.87</b>	<b>\$18,920.32</b>		<b>\$32,268.19</b>
<b>800 Other Objects</b>				
810 Dues and Fees	1,302.40	1,895.10		3,197.50
<b>Total Other Objects</b>	<b>\$1,302.40</b>	<b>\$1,895.10</b>		<b>\$3,197.50</b>
<b>Total 1100 Regular Programs – Elementary / Secondary</b>	<b>\$23,949,417.71</b>	<b>\$18,076,644.51</b>	<b>\$557,336.85</b>	<b>\$42,583,399.07</b>

**General Fund (10)**

**1110 Regular Programs**

	<u>Elementary</u>	<u>Secondary</u>	<u>Federal</u>	<u>Total</u>
<b>100 Personnel Services – Salaries</b>				
100 Personnel Services – Salaries	14,843,802.18	10,630,504.69		25,474,306.87
<b>Total Personnel Services – Salaries</b>	<b>\$14,843,802.18</b>	<b>\$10,630,504.69</b>		<b>\$25,474,306.87</b>
<b>200 Personnel Services – Employee Benefits</b>				
210 Group Insurance – Contracted Provider	115,499.86	61,716.59		177,216.45
220 Social Security Contributions	1,094,073.40	779,516.51		1,873,589.91
230 PSERS Retirement Contributions	5,045,538.65	3,567,392.01		8,612,930.66
250 Unemployment Compensation	2,794.73	1,052.53		3,847.26
260 Workers' Compensation	90,133.91	79,979.06		170,112.97
270 Group Insurance – Self-Insurance	2,060,886.09	1,321,305.48		3,382,191.57
<b>Total Personnel Services – Employee Benefits</b>	<b>\$8,408,926.64</b>	<b>\$5,810,962.18</b>		<b>\$14,219,888.82</b>
<b>300 Purchased Professional and Technical Services</b>				
323 Professional Educational Services – Other Educational Agencies	209,431.97	129,157.31		338,589.28
329 Professional Educational Services – Other	400.00	7,461.00		7,861.00
390 Other Purchased Professional and Technical Services		625.00		625.00
<b>Total Purchased Professional and Technical Services</b>	<b>\$209,831.97</b>	<b>\$137,243.31</b>		<b>\$347,075.28</b>
<b>400 Purchased Property Services</b>				
430 Repairs and Maintenance Services	3,082.35	4,501.70		7,584.05
<b>Total Purchased Property Services</b>	<b>\$3,082.35</b>	<b>\$4,501.70</b>		<b>\$7,584.05</b>
<b>500 Other Purchased Services</b>				
561 Tuition To Other School Districts Within the State		9,225.40		9,225.40
562 Tuition To Pennsylvania Charter Schools	292,759.42	654,175.10		946,934.52
568 Tuition To Private Residential Rehabilitative Institutions (PRRI) [In-State] and Detention Centers		18,064.50		18,064.50
569 Tuition – Other		657,019.86		657,019.86
580 Travel	155.23	1,246.03		1,401.26
<b>Total Other Purchased Services</b>	<b>\$292,914.65</b>	<b>\$1,339,730.89</b>		<b>\$1,632,645.54</b>
<b>600 Supplies</b>				
610 General Supplies	129,552.50	101,532.30		231,084.80
640 Books and Periodicals	46,692.09	30,946.98		77,639.07
650 Supplies & Fees – Technology Related	(34.94)	407.04		372.10
<b>Total Supplies</b>	<b>\$176,209.65</b>	<b>\$132,886.32</b>		<b>\$309,095.97</b>
<b>700 Property</b>				
752 Capital Equipment – Original and Additional	4,847.08	14,061.12		18,908.20
762 Capitalized Equipment - Replacement	8,500.79	4,859.20		13,359.99
<b>Total Property</b>	<b>\$13,347.87</b>	<b>\$18,920.32</b>		<b>\$32,268.19</b>
<b>800 Other Objects</b>				
810 Dues and Fees	1,302.40	1,895.10		3,197.50
<b>Total Other Objects</b>	<b>\$1,302.40</b>	<b>\$1,895.10</b>		<b>\$3,197.50</b>
<b>Total 1110 Regular Programs</b>	<b>\$23,949,417.71</b>	<b>\$18,076,644.51</b>		<b>\$42,026,062.22</b>

**General Fund (10)**

**1190 Federally-Funded Regular Programs**

	<u>Elementary</u>	<u>Secondary</u>	<u>Federal</u>	<u>Total</u>
<b>100 Personnel Services – Salaries</b>				
100 Personnel Services – Salaries			318,928.20	318,928.20
<b>Total Personnel Services – Salaries</b>			<b>\$318,928.20</b>	<b>\$318,928.20</b>
<b>200 Personnel Services – Employee Benefits</b>				
210 Group Insurance – Contracted Provider			(388.44)	(388.44)
220 Social Security Contributions			23,766.17	23,766.17
230 PSERS Retirement Contributions			109,662.05	109,662.05
270 Group Insurance – Self-Insurance			49,278.29	49,278.29
<b>Total Personnel Services – Employee Benefits</b>			<b>\$182,318.07</b>	<b>\$182,318.07</b>
<b>300 Purchased Professional and Technical Services</b>				
329 Professional Educational Services – Other			12,298.10	12,298.10
<b>Total Purchased Professional and Technical Services</b>			<b>\$12,298.10</b>	<b>\$12,298.10</b>
<b>600 Supplies</b>				
610 General Supplies			43,323.71	43,323.71
630 Food			468.77	468.77
<b>Total Supplies</b>			<b>\$43,792.48</b>	<b>\$43,792.48</b>
<b>Total 1190 Federally-Funded Regular Programs</b>			<b>\$557,336.85</b>	<b>\$557,336.85</b>

**General Fund (10)**

**1200 Special Programs – Elementary / Secondary**

	<u>Elementary</u>	<u>Secondary</u>	<u>Federal</u>	<u>Total</u>
<b>100 Personnel Services – Salaries</b>				
100 Personnel Services – Salaries	4,302,849.49	3,515,566.90	76,999.59	7,895,415.98
<b>Total Personnel Services – Salaries</b>	<b>\$4,302,849.49</b>	<b>\$3,515,566.90</b>	<b>\$76,999.59</b>	<b>\$7,895,415.98</b>
<b>200 Personnel Services – Employee Benefits</b>				
210 Group Insurance – Contracted Provider	24,137.57	17,415.88		41,553.45
220 Social Security Contributions	318,596.32	257,081.57	3,498.98	579,176.87
230 PSERS Retirement Contributions	1,471,815.40	1,191,104.85	13,889.00	2,676,809.25
250 Unemployment Compensation	2,075.50			2,075.50
260 Workers' Compensation	52,543.36	14,724.57		67,267.93
270 Group Insurance – Self-Insurance	743,959.19	642,843.60	1,360.25	1,388,163.04
291 Other Retirement Plans		65.94		65.94
<b>Total Personnel Services – Employee Benefits</b>	<b>\$2,613,127.34</b>	<b>\$2,123,236.41</b>	<b>\$18,748.23</b>	<b>\$4,755,111.98</b>
<b>300 Purchased Professional and Technical Services</b>				
322 Professional Educational Services – Ius	332,238.12	332,238.11		664,476.23
323 Professional Educational Services – Other Educational Agencies	23,578.22	215,711.67	69,829.60	309,119.49
329 Professional Educational Services – Other	181,132.03	172,227.02	40,116.59	393,475.64
330 Other Professional Services	2,266.00	6,266.00	9,811.00	18,343.00
<b>Total Purchased Professional and Technical Services</b>	<b>\$539,214.37</b>	<b>\$726,442.80</b>	<b>\$119,757.19</b>	<b>\$1,385,414.36</b>
<b>500 Other Purchased Services</b>				
530 Communications	818.27	1,241.52		2,059.79
561 Tuition To Other School Districts Within the State	4,158.75			4,158.75
562 Tuition To Pennsylvania Charter Schools	74,812.24	122,847.62		197,659.86
567 Tuition To Approved Private Schools (APS) and PA Chartered Schools for the Deaf and Blind	42,538.91	717,515.80	441,625.50	1,201,680.21
568 Tuition To Private Residential Rehabilitative Institutions (PRRI) [In-State] and Detention Centers	79,917.41			79,917.41
569 Tuition – Other		299,609.40		299,609.40
580 Travel	3,169.27	612.25		3,781.52
594 IU Payment By Withholding for Institutionalized Children's Programs – Special Classes	630.51			630.51
<b>Total Other Purchased Services</b>	<b>\$206,045.36</b>	<b>\$1,141,826.59</b>	<b>\$441,625.50</b>	<b>\$1,789,497.45</b>
<b>600 Supplies</b>				
610 General Supplies	50,517.14	21,828.04	579.93	72,925.11
640 Books and Periodicals	6,027.28	369.93	7,773.28	14,170.49
650 Supplies & Fees – Technology Related	147.50	147.50	5,275.00	5,570.00
<b>Total Supplies</b>	<b>\$56,691.92</b>	<b>\$22,345.47</b>	<b>\$13,628.21</b>	<b>\$92,665.60</b>
<b>700 Property</b>				
752 Capital Equipment – Original and Additional			4,425.13	4,425.13
762 Capitalized Equipment - Replacement	549.50	549.50	2,397.00	3,496.00
<b>Total Property</b>	<b>\$549.50</b>	<b>\$549.50</b>	<b>\$6,822.13</b>	<b>\$7,921.13</b>
<b>Total 1200 Special Programs – Elementary / Secondary</b>	<b>\$7,718,477.98</b>	<b>\$7,529,967.67</b>	<b>\$677,580.85</b>	<b>\$15,926,026.50</b>

**General Fund (10)**

**1220 Sensory Support**

	<u>Elementary</u>	<u>Secondary</u>	<u>Federal</u>	<u>Total</u>
<b>100 Personnel Services – Salaries</b>				
100 Personnel Services – Salaries	405,468.89	121,350.37		526,819.26
<b>Total Personnel Services – Salaries</b>	<b>\$405,468.89</b>	<b>\$121,350.37</b>		<b>\$526,819.26</b>
<b>200 Personnel Services – Employee Benefits</b>				
210 Group Insurance – Contracted Provider	(740.54)	(274.49)		(1,015.03)
220 Social Security Contributions	30,746.72	9,148.12		39,894.84
230 PSERS Retirement Contributions	137,664.01	40,233.93		177,897.94
260 Workers' Compensation	2,469.20	790.15		3,259.35
270 Group Insurance – Self-Insurance	13,821.52	11,562.75		25,384.27
<b>Total Personnel Services – Employee Benefits</b>	<b>\$183,960.91</b>	<b>\$61,460.46</b>		<b>\$245,421.37</b>
<b>600 Supplies</b>				
610 General Supplies	7,066.70	231.57		7,298.27
<b>Total Supplies</b>	<b>\$7,066.70</b>	<b>\$231.57</b>		<b>\$7,298.27</b>
<b>Total 1220 Sensory Support</b>	<b>\$596,496.50</b>	<b>\$183,042.40</b>		<b>\$779,538.90</b>

**General Fund (10)**

**1230 Emotional Support**

	<u>Elementary</u>	<u>Secondary</u>	<u>Federal</u>	<u>Total</u>
<b>100 Personnel Services – Salaries</b>				
100 Personnel Services – Salaries	856,828.43	1,392,025.64		2,248,854.07
<b>Total Personnel Services – Salaries</b>	<b>\$856,828.43</b>	<b>\$1,392,025.64</b>		<b>\$2,248,854.07</b>
<b>200 Personnel Services – Employee Benefits</b>				
210 Group Insurance – Contracted Provider	(6,117.82)	(2,680.05)		(8,797.87)
220 Social Security Contributions	60,162.96	101,480.51		161,643.47
230 PSERS Retirement Contributions	288,615.63	467,935.49		756,551.12
260 Workers' Compensation	592.61	1,777.82		2,370.43
270 Group Insurance – Self-Insurance	282,600.60	262,940.74		545,541.34
<b>Total Personnel Services – Employee Benefits</b>	<b>\$625,853.98</b>	<b>\$831,454.51</b>		<b>\$1,457,308.49</b>
<b>300 Purchased Professional and Technical Services</b>				
323 Professional Educational Services – Other Educational Agencies		187,077.76		187,077.76
<b>Total Purchased Professional and Technical Services</b>		<b>\$187,077.76</b>		<b>\$187,077.76</b>
<b>500 Other Purchased Services</b>				
580 Travel		36.10		36.10
<b>Total Other Purchased Services</b>		<b>\$36.10</b>		<b>\$36.10</b>
<b>600 Supplies</b>				
610 General Supplies	5,289.52	1,902.12		7,191.64
<b>Total Supplies</b>	<b>\$5,289.52</b>	<b>\$1,902.12</b>		<b>\$7,191.64</b>
<b>Total 1230 Emotional Support</b>	<b>\$1,487,971.93</b>	<b>\$2,412,496.13</b>		<b>\$3,900,468.06</b>



**General Fund (10)**

**1240 Academic Support**

	<u>Elementary</u>	<u>Secondary</u>	<u>Federal</u>	<u>Total</u>
<b>100 Personnel Services – Salaries</b>				
100 Personnel Services – Salaries	2,572,288.09	1,943,911.82		4,516,199.91
<b>Total Personnel Services – Salaries</b>	<b>\$2,572,288.09</b>	<b>\$1,943,911.82</b>		<b>\$4,516,199.91</b>
<b>200 Personnel Services – Employee Benefits</b>				
210 Group Insurance – Contracted Provider	(8,690.26)	(7,064.76)		(15,755.02)
220 Social Security Contributions	190,558.54	142,054.99		332,613.53
230 PSERS Retirement Contributions	878,497.04	666,307.62		1,544,804.66
260 Workers' Compensation	19,778.89	7,615.00		27,393.89
270 Group Insurance – Self-Insurance	361,676.26	366,684.89		728,361.15
<b>Total Personnel Services – Employee Benefits</b>	<b>\$1,441,820.47</b>	<b>\$1,175,597.74</b>		<b>\$2,617,418.21</b>
<b>300 Purchased Professional and Technical Services</b>				
329 Professional Educational Services – Other		4,800.00		4,800.00
<b>Total Purchased Professional and Technical Services</b>		<b>\$4,800.00</b>		<b>\$4,800.00</b>
<b>500 Other Purchased Services</b>				
561 Tuition To Other School Districts Within the State	4,158.75			4,158.75
<b>Total Other Purchased Services</b>	<b>\$4,158.75</b>			<b>\$4,158.75</b>
<b>600 Supplies</b>				
610 General Supplies	28,107.60	4,469.97		32,577.57
<b>Total Supplies</b>	<b>\$28,107.60</b>	<b>\$4,469.97</b>		<b>\$32,577.57</b>
<b>Total 1240 Academic Support</b>	<b>\$4,046,374.91</b>	<b>\$3,128,779.53</b>		<b>\$7,175,154.44</b>

**General Fund (10)**

	<u>Elementary</u>	<u>Secondary</u>	<u>Federal</u>	<u>Total</u>
<b>1241 Learning Support – Public</b>				
<b>100 Personnel Services – Salaries</b>				
100 Personnel Services – Salaries	2,127,593.58	1,469,128.33		3,596,721.91
<b>Total Personnel Services – Salaries</b>	<b>\$2,127,593.58</b>	<b>\$1,469,128.33</b>		<b>\$3,596,721.91</b>
<b>200 Personnel Services – Employee Benefits</b>				
210 Group Insurance – Contracted Provider	(8,290.94)	(6,018.93)		(14,309.87)
220 Social Security Contributions	157,537.51	106,951.93		264,489.44
230 PSERS Retirement Contributions	727,246.62	503,504.93		1,230,751.55
260 Workers' Compensation	15,169.75	6,429.79		21,599.54
270 Group Insurance – Self-Insurance	326,966.69	294,356.37		621,323.06
<b>Total Personnel Services – Employee Benefits</b>	<b>\$1,218,629.63</b>	<b>\$905,224.09</b>		<b>\$2,123,853.72</b>
<b>500 Other Purchased Services</b>				
561 Tuition To Other School Districts Within the State	4,158.75			4,158.75
<b>Total Other Purchased Services</b>	<b>\$4,158.75</b>			<b>\$4,158.75</b>
<b>600 Supplies</b>				
610 General Supplies	28,107.60	4,469.97		32,577.57
<b>Total Supplies</b>	<b>\$28,107.60</b>	<b>\$4,469.97</b>		<b>\$32,577.57</b>
<b>Total 1241 Learning Support – Public</b>	<b>\$3,378,489.56</b>	<b>\$2,378,822.39</b>		<b>\$5,757,311.95</b>

**General Fund (10)**

**1243 Gifted Support**

	<u>Elementary</u>	<u>Secondary</u>	<u>Federal</u>	<u>Total</u>
<b>100 Personnel Services – Salaries</b>				
100 Personnel Services – Salaries	444,694.51	474,783.49		919,478.00
<b>Total Personnel Services – Salaries</b>	<b>\$444,694.51</b>	<b>\$474,783.49</b>		<b>\$919,478.00</b>
<b>200 Personnel Services – Employee Benefits</b>				
210 Group Insurance – Contracted Provider	(399.32)	(1,045.83)		(1,445.15)
220 Social Security Contributions	33,021.03	35,103.06		68,124.09
230 PSERS Retirement Contributions	151,250.42	162,802.69		314,053.11
260 Workers' Compensation	4,609.14	1,185.21		5,794.35
270 Group Insurance – Self-Insurance	34,709.57	72,328.52		107,038.09
<b>Total Personnel Services – Employee Benefits</b>	<b>\$223,190.84</b>	<b>\$270,373.65</b>		<b>\$493,564.49</b>
<b>300 Purchased Professional and Technical Services</b>				
329 Professional Educational Services – Other		4,800.00		4,800.00
<b>Total Purchased Professional and Technical Services</b>		<b>\$4,800.00</b>		<b>\$4,800.00</b>
<b>Total 1243 Gifted Support</b>	<b>\$667,885.35</b>	<b>\$749,957.14</b>		<b>\$1,417,842.49</b>

General Fund (10)

1260 Physical Support

100 Personnel Services – Salaries

	<u>Elementary</u>	<u>Secondary</u>	<u>Federal</u>	<u>Total</u>
100 Personnel Services – Salaries	150,408.19			150,408.19
<b>Total Personnel Services – Salaries</b>	<b>\$150,408.19</b>			<b>\$150,408.19</b>

200 Personnel Services – Employee Benefits

210 Group Insurance – Contracted Provider	(1,672.47)			(1,672.47)
220 Social Security Contributions	11,087.46			11,087.46
230 PSERS Retirement Contributions	49,970.20			49,970.20
270 Group Insurance – Self-Insurance	28,204.56			28,204.56
<b>Total Personnel Services – Employee Benefits</b>	<b>\$87,589.75</b>			<b>\$87,589.75</b>
<b>Total 1260 Physical Support</b>	<b>\$237,997.94</b>			<b>\$237,997.94</b>

**General Fund (10)**

	<u>Elementary</u>	<u>Secondary</u>	<u>Federal</u>	<u>Total</u>
<b>1290 Special Programs - Other Support</b>				
<b>100 Personnel Services – Salaries</b>				
100 Personnel Services – Salaries	317,855.89	58,279.07	76,999.59	453,134.55
<b>Total Personnel Services – Salaries</b>	<b>\$317,855.89</b>	<b>\$58,279.07</b>	<b>\$76,999.59</b>	<b>\$453,134.55</b>
<b>200 Personnel Services – Employee Benefits</b>				
210 Group Insurance – Contracted Provider	41,358.66	27,435.18		68,793.84
220 Social Security Contributions	26,040.64	4,397.95	3,498.98	33,937.57
230 PSERS Retirement Contributions	117,068.52	16,627.81	13,889.00	147,585.33
250 Unemployment Compensation	2,075.50			2,075.50
260 Workers' Compensation	29,702.66	4,541.60		34,244.26
270 Group Insurance – Self-Insurance	57,656.25	1,655.22	1,360.25	60,671.72
291 Other Retirement Plans		65.94		65.94
<b>Total Personnel Services – Employee Benefits</b>	<b>\$273,902.23</b>	<b>\$54,723.70</b>	<b>\$18,748.23</b>	<b>\$347,374.16</b>
<b>300 Purchased Professional and Technical Services</b>				
322 Professional Educational Services – Ius	332,238.12	332,238.11		664,476.23
323 Professional Educational Services – Other Educational Agencies	23,578.22	28,633.91	69,829.60	122,041.73
329 Professional Educational Services – Other	181,132.03	167,427.02	40,116.59	388,675.64
330 Other Professional Services	2,266.00	6,266.00	9,811.00	18,343.00
<b>Total Purchased Professional and Technical Services</b>	<b>\$539,214.37</b>	<b>\$534,565.04</b>	<b>\$119,757.19</b>	<b>\$1,193,536.60</b>
<b>500 Other Purchased Services</b>				
530 Communications	818.27	1,241.52		2,059.79
562 Tuition To Pennsylvania Charter Schools	74,812.24	122,847.62		197,659.86
567 Tuition To Approved Private Schools (APS) and PA Chartered Schools for the Deaf and Blind	42,538.91	717,515.80	441,625.50	1,201,680.21
568 Tuition To Private Residential Rehabilitative Institutions (PRRI) [In-State] and Detention Centers	79,917.41			79,917.41
569 Tuition – Other		299,609.40		299,609.40
580 Travel	3,169.27	576.15		3,745.42
594 IU Payment By Withholding for Institutionalized Children’s Programs – Special Classes	630.51			630.51
<b>Total Other Purchased Services</b>	<b>\$201,886.61</b>	<b>\$1,141,790.49</b>	<b>\$441,625.50</b>	<b>\$1,785,302.60</b>
<b>600 Supplies</b>				
610 General Supplies	10,053.32	15,224.38	579.93	25,857.63
640 Books and Periodicals	6,027.28	369.93	7,773.28	14,170.49
650 Supplies & Fees – Technology Related	147.50	147.50	5,275.00	5,570.00
<b>Total Supplies</b>	<b>\$16,228.10</b>	<b>\$15,741.81</b>	<b>\$13,628.21</b>	<b>\$45,598.12</b>
<b>700 Property</b>				
752 Capital Equipment – Original and Additional			4,425.13	4,425.13
762 Capitalized Equipment - Replacement	549.50	549.50	2,397.00	3,496.00
<b>Total Property</b>	<b>\$549.50</b>	<b>\$549.50</b>	<b>\$6,822.13</b>	<b>\$7,921.13</b>
<b>Total 1290 Special Programs - Other Support</b>	<b>\$1,349,636.70</b>	<b>\$1,805,649.61</b>	<b>\$677,580.85</b>	<b>\$3,832,867.16</b>

**General Fund (10)**

**1300 Vocational Education**

	<u>Elementary</u>	<u>Secondary</u>	<u>Federal</u>	<u>Total</u>
<b>100 Personnel Services – Salaries</b>				
100 Personnel Services – Salaries		582,416.00		582,416.00
<b>Total Personnel Services – Salaries</b>		<b>\$582,416.00</b>		<b>\$582,416.00</b>
<b>200 Personnel Services – Employee Benefits</b>				
210 Group Insurance – Contracted Provider		1,607.29		1,607.29
220 Social Security Contributions		43,445.41		43,445.41
230 PSERS Retirement Contributions		198,752.06		198,752.06
270 Group Insurance – Self-Insurance		66,656.98		66,656.98
<b>Total Personnel Services – Employee Benefits</b>		<b>\$310,461.74</b>		<b>\$310,461.74</b>
<b>400 Purchased Property Services</b>				
430 Repairs and Maintenance Services		1,275.00		1,275.00
<b>Total Purchased Property Services</b>		<b>\$1,275.00</b>		<b>\$1,275.00</b>
<b>500 Other Purchased Services</b>				
564 Tuition To Career and Technology Centers		1,956,041.76		1,956,041.76
580 Travel		(146.28)		(146.28)
<b>Total Other Purchased Services</b>		<b>\$1,955,895.48</b>		<b>\$1,955,895.48</b>
<b>600 Supplies</b>				
610 General Supplies		9,792.14		9,792.14
<b>Total Supplies</b>		<b>\$9,792.14</b>		<b>\$9,792.14</b>
<b>Total 1300 Vocational Education</b>		<b>\$2,859,840.36</b>		<b>\$2,859,840.36</b>

General Fund (10)

	<u>Elementary</u>	<u>Secondary</u>	<u>Federal</u>	<u>Total</u>
<b>1400 Other Instructional Programs – Elementary / Secondary</b>				
<b>100 Personnel Services – Salaries</b>				
100 Personnel Services – Salaries	19,535.29	16,531.75		36,067.04
<b>Total Personnel Services – Salaries</b>	<b>\$19,535.29</b>	<b>\$16,531.75</b>		<b>\$36,067.04</b>
<b>200 Personnel Services – Employee Benefits</b>				
220 Social Security Contributions	1,476.63	1,245.92		2,722.55
230 PSERS Retirement Contributions	6,583.94	5,581.70		12,165.64
<b>Total Personnel Services – Employee Benefits</b>	<b>\$8,060.57</b>	<b>\$6,827.62</b>		<b>\$14,888.19</b>
<b>500 Other Purchased Services</b>				
561 Tuition To Other School Districts Within the State	48,494.35	48,494.35		96,988.70
<b>Total Other Purchased Services</b>	<b>\$48,494.35</b>	<b>\$48,494.35</b>		<b>\$96,988.70</b>
<b>Total 1400 Other Instructional Programs – Elementary / Secondary</b>	<b>\$76,090.21</b>	<b>\$71,853.72</b>		<b>\$147,943.93</b>

General Fund (10)

1420 Summer School

100 Personnel Services – Salaries

	<u>Elementary</u>	<u>Secondary</u>	<u>Federal</u>	<u>Total</u>
100 Personnel Services – Salaries	19,323.14	16,104.98		35,428.12
<b>Total Personnel Services – Salaries</b>	<b>\$19,323.14</b>	<b>\$16,104.98</b>		<b>\$35,428.12</b>

200 Personnel Services – Employee Benefits

220 Social Security Contributions	1,460.57	1,214.36		2,674.93
230 PSERS Retirement Contributions	6,511.19	5,435.37		11,946.56

<b>Total Personnel Services – Employee Benefits</b>	<b>\$7,971.76</b>	<b>\$6,649.73</b>		<b>\$14,621.49</b>
<b>Total 1420 Summer School</b>	<b>\$27,294.90</b>	<b>\$22,754.71</b>		<b>\$50,049.61</b>



General Fund (10)

	<u>Elementary</u>	<u>Secondary</u>	<u>Federal</u>	<u>Total</u>
<b>1430 Homebound Instruction</b>				
<b>100 Personnel Services – Salaries</b>				
100 Personnel Services – Salaries	212.15	426.77		638.92
<b>Total Personnel Services – Salaries</b>	<b>\$212.15</b>	<b>\$426.77</b>		<b>\$638.92</b>
<b>200 Personnel Services – Employee Benefits</b>				
220 Social Security Contributions	16.06	31.56		47.62
230 PSERS Retirement Contributions	72.75	146.33		219.08
<b>Total Personnel Services – Employee Benefits</b>	<b>\$88.81</b>	<b>\$177.89</b>		<b>\$266.70</b>
<b>Total 1430 Homebound Instruction</b>	<b>\$300.96</b>	<b>\$604.66</b>		<b>\$905.62</b>

LEA : 123468402 Upper Merion Area SD

Printed 11/17/2020 11:29:07 AM

General Fund (10)

1440 Alternative Regular Education Programs

500 Other Purchased Services

561 Tuition To Other School Districts Within the State

Total Other Purchased Services

Total 1440 Alternative Regular Education Programs

	<u>Elementary</u>	<u>Secondary</u>	<u>Federal</u>	<u>Total</u>
561 Tuition To Other School Districts Within the State	48,494.35	48,494.35		96,988.70
<b>Total Other Purchased Services</b>	<b>\$48,494.35</b>	<b>\$48,494.35</b>		<b>\$96,988.70</b>
<b>Total 1440 Alternative Regular Education Programs</b>	<b>\$48,494.35</b>	<b>\$48,494.35</b>		<b>\$96,988.70</b>

LEA : 123468402 Upper Merion Area SD

Printed 11/17/2020 11:29:07 AM

General Fund (10)

1441 Adjudicated / Court-Placed Programs

500 Other Purchased Services

561 Tuition To Other School Districts Within the State

Total Other Purchased Services

Total 1441 Adjudicated / Court-Placed Programs

	<u>Elementary</u>	<u>Secondary</u>	<u>Federal</u>	<u>Total</u>
561 Tuition To Other School Districts Within the State	48,494.35	48,494.35		96,988.70
<b>Total Other Purchased Services</b>	<b>\$48,494.35</b>	<b>\$48,494.35</b>		<b>\$96,988.70</b>
<b>Total 1441 Adjudicated / Court-Placed Programs</b>	<b>\$48,494.35</b>	<b>\$48,494.35</b>		<b>\$96,988.70</b>

General Fund (10)

1500 Nonpublic School Programs

Elementary

Secondary

Federal

Total

300 Purchased Professional and Technical Services

329 Professional Educational Services – Other

7,844.03

7,844.03

**Total Purchased Professional and Technical Services**

**\$7,844.03**

**\$7,844.03**

600 Supplies

610 General Supplies

4,328.97

4,328.97

**Total Supplies**

**\$4,328.97**

**\$4,328.97**

**Total 1500 Nonpublic School Programs**

**\$12,173.00**

**\$12,173.00**

General Fund (10)

2000 Support Services

Total

100 Personnel Services – Salaries

100 Personnel Services – Salaries 13,396,232.42

Total Personnel Services – Salaries \$13,396,232.42

200 Personnel Services – Employee Benefits

210 Group Insurance – Contracted Provider 119,125.66

220 Social Security Contributions 965,992.47

230 PSERS Retirement Contributions 4,503,426.47

240 Tuition Reimbursement 138,464.27

250 Unemployment Compensation 7,522.88

260 Workers' Compensation 150,210.68

270 Group Insurance – Self-Insurance 2,108,369.35

291 Other Retirement Plans 47,720.00

Total Personnel Services – Employee Benefits \$8,040,831.78

300 Purchased Professional and Technical Services

310 Official / Administrative Services 53.50

329 Professional Educational Services – Other 129,312.62

330 Other Professional Services 569,689.12

340 Technical Services 395,246.20

350 Security / Safety Services 14,920.00

360 Employee Training and Development Services 106,403.19

390 Other Purchased Professional and Technical Services 99,312.67

Total Purchased Professional and Technical Services \$1,314,937.30

400 Purchased Property Services

410 Cleaning Services 62,541.64

420 Utility Services 189,010.08

430 Repairs and Maintenance Services 234,966.08

440 Rentals 143,892.57

490 Other Purchased Property Services 12,694.85

Total Purchased Property Services \$643,105.22

500 Other Purchased Services

513 Contracted Carriers 2,819,517.69

516 Student Transportation Services From the IU 665,633.21

520 Insurance – General 136,865.00

521 Fire Insurance 31,007.01

523 General Property and Liability Insurance 235,427.98

524 Other Pupil Transportation Insurance 29,076.01

529 Other Insurance 36,639.00

530 Communications 237,130.32

549 Other Advertising/Public Relations 10,564.37

580 Travel 26,112.87

595 IU Payments By Withholding 67,375.69

599 Other Miscellaneous Purchased Services 20,526.32

Total Other Purchased Services \$4,315,875.47

LEA : 123468402 Upper Merion Area SD

Printed 11/17/2020 11:29:27 AM

**General Fund (10)**

**2000 Support Services**

**Total**

**600 Supplies**

610 General Supplies	1,381,549.30
620 Energy	808,006.66
630 Food	3,469.52
640 Books and Periodicals	512,029.30
650 Supplies & Fees – Technology Related	266,245.98

<b>Total Supplies</b>	<b>\$2,971,300.76</b>
-----------------------	-----------------------

**700 Property**

752 Capital Equipment – Original and Additional	15,419.70
758 Capitalized Technology Software - Original	19,714.70
762 Capitalized Equipment - Replacement	27,958.10
766 Capitalized Technology Equipment – Replacement	265,119.00

<b>Total Property</b>	<b>\$328,211.50</b>
-----------------------	---------------------

**800 Other Objects**

810 Dues and Fees	81,960.32
820 Claims and Judgments Against the LEA	2,500.00

<b>Total Other Objects</b>	<b>\$84,460.32</b>
----------------------------	--------------------

<b>Total 2000 Support Services</b>	<b>\$31,094,954.77</b>
------------------------------------	------------------------

**General Fund (10)**

	<u>Elementary</u>	<u>Secondary</u>	<u>Federal</u>	<u>Total</u>
<b>2100 Support Services – Students</b>				
<b>100 Personnel Services – Salaries</b>				
100 Personnel Services – Salaries	1,701,739.46	867,335.71		3,223,019.96
<b>Total Personnel Services – Salaries</b>	<b>\$1,701,739.46</b>	<b>\$867,335.71</b>		<b>\$3,223,019.96</b>
<b>200 Personnel Services – Employee Benefits</b>				
210 Group Insurance – Contracted Provider	463.33	6,149.89		12,938.51
220 Social Security Contributions	124,603.35	62,767.38		234,564.46
230 PSERS Retirement Contributions	565,822.62	296,335.41		1,079,258.10
260 Workers' Compensation	6,399.58	6,782.00		13,181.58
270 Group Insurance – Self-Insurance	198,968.58	116,550.60		457,902.36
291 Other Retirement Plans	2,250.00	2,250.00		5,220.00
<b>Total Personnel Services – Employee Benefits</b>	<b>\$898,507.46</b>	<b>\$490,835.28</b>		<b>\$1,803,065.01</b>
<b>300 Purchased Professional and Technical Services</b>				
329 Professional Educational Services – Other	1,014.90			1,014.90
<b>Total Purchased Professional and Technical Services</b>	<b>\$1,014.90</b>			<b>\$1,014.90</b>
<b>500 Other Purchased Services</b>				
580 Travel	1,038.92	1,642.29		3,975.35
<b>Total Other Purchased Services</b>	<b>\$1,038.92</b>	<b>\$1,642.29</b>		<b>\$3,975.35</b>
<b>600 Supplies</b>				
610 General Supplies	21.19	14,106.22	220.00	14,626.41
650 Supplies & Fees – Technology Related				105.53
<b>Total Supplies</b>	<b>\$21.19</b>	<b>\$14,106.22</b>	<b>\$220.00</b>	<b>\$14,731.94</b>
<b>800 Other Objects</b>				
810 Dues and Fees		400.00		400.00
<b>Total Other Objects</b>		<b>\$400.00</b>		<b>\$400.00</b>
<b>Total 2100 Support Services – Students</b>	<b>\$2,602,321.93</b>	<b>\$1,374,319.50</b>	<b>\$220.00</b>	<b>\$5,046,207.16</b>

**General Fund (10)**

	<u>Elementary</u>	<u>Secondary</u>	<u>Federal</u>	<u>Total</u>
<b>2110 Supervision of Student Services</b>				
<b>100 Personnel Services – Salaries</b>				
100 Personnel Services – Salaries	190,320.81	190,320.81		380,641.62
<b>Total Personnel Services – Salaries</b>	<b>\$190,320.81</b>	<b>\$190,320.81</b>		<b>\$380,641.62</b>
<b>200 Personnel Services – Employee Benefits</b>				
210 Group Insurance – Contracted Provider	(207.21)	(207.20)		(414.41)
220 Social Security Contributions	12,980.27	12,980.27		25,960.54
230 PSERS Retirement Contributions	64,317.23	64,317.21		128,634.44
270 Group Insurance – Self-Insurance	18,332.64	18,332.64		36,665.28
291 Other Retirement Plans	2,250.00	2,250.00		4,500.00
<b>Total Personnel Services – Employee Benefits</b>	<b>\$97,672.93</b>	<b>\$97,672.92</b>		<b>\$195,345.85</b>
<b>Total 2110 Supervision of Student Services</b>	<b>\$287,993.74</b>	<b>\$287,993.73</b>		<b>\$575,987.47</b>



General Fund (10)

	<u>Elementary</u>	<u>Secondary</u>	<u>Federal</u>	<u>Total</u>
<b>2111 Supervision of Student Services – Head of Component</b>				
<b>100 Personnel Services – Salaries</b>				
100 Personnel Services – Salaries	81,547.36	81,547.36		163,094.72
<b>Total Personnel Services – Salaries</b>	<b>\$81,547.36</b>	<b>\$81,547.36</b>		<b>\$163,094.72</b>
<b>200 Personnel Services – Employee Benefits</b>				
210 Group Insurance – Contracted Provider	(53.59)	(53.58)		(107.17)
220 Social Security Contributions	5,174.02	5,174.02		10,348.04
230 PSERS Retirement Contributions	27,438.95	27,438.94		54,877.89
291 Other Retirement Plans	750.00	750.00		1,500.00
<b>Total Personnel Services – Employee Benefits</b>	<b>\$33,309.38</b>	<b>\$33,309.38</b>		<b>\$66,618.76</b>
<b>Total 2111 Supervision of Student Services – Head of Component</b>	<b>\$114,856.74</b>	<b>\$114,856.74</b>		<b>\$229,713.48</b>

**General Fund (10)**

**2119 Supervision of Student Services – All Other Supervision**

	<u>Elementary</u>	<u>Secondary</u>	<u>Federal</u>	<u>Total</u>
<b>100 Personnel Services – Salaries</b>				
100 Personnel Services – Salaries	108,773.45	108,773.45		217,546.90
<b>Total Personnel Services – Salaries</b>	<b>\$108,773.45</b>	<b>\$108,773.45</b>		<b>\$217,546.90</b>
<b>200 Personnel Services – Employee Benefits</b>				
210 Group Insurance – Contracted Provider	(153.62)	(153.62)		(307.24)
220 Social Security Contributions	7,806.25	7,806.25		15,612.50
230 PSERS Retirement Contributions	36,878.28	36,878.27		73,756.55
270 Group Insurance – Self-Insurance	18,332.64	18,332.64		36,665.28
291 Other Retirement Plans	1,500.00	1,500.00		3,000.00
<b>Total Personnel Services – Employee Benefits</b>	<b>\$64,363.55</b>	<b>\$64,363.54</b>		<b>\$128,727.09</b>
<b>Total 2119 Supervision of Student Services – All Other Supervision</b>	<b>\$173,137.00</b>	<b>\$173,136.99</b>		<b>\$346,273.99</b>

**General Fund (10)**

**2120 Guidance Services**

	<u>Elementary</u>	<u>Secondary</u>	<u>Federal</u>	<u>Total</u>
<b>100 Personnel Services – Salaries</b>				
100 Personnel Services – Salaries	1,040,129.35	621,348.49		1,661,477.84
<b>Total Personnel Services – Salaries</b>	<b>\$1,040,129.35</b>	<b>\$621,348.49</b>		<b>\$1,661,477.84</b>
<b>200 Personnel Services – Employee Benefits</b>				
210 Group Insurance – Contracted Provider	273.27	4,663.84		4,937.11
220 Social Security Contributions	76,456.29	45,596.02		122,052.31
230 PSERS Retirement Contributions	356,635.27	212,950.99		569,586.26
260 Workers' Compensation	6,399.58	6,782.00		13,181.58
270 Group Insurance – Self-Insurance	129,993.25	94,974.38		224,967.63
<b>Total Personnel Services – Employee Benefits</b>	<b>\$569,757.66</b>	<b>\$364,967.23</b>		<b>\$934,724.89</b>
<b>500 Other Purchased Services</b>				
580 Travel	179.29	894.24		1,073.53
<b>Total Other Purchased Services</b>	<b>\$179.29</b>	<b>\$894.24</b>		<b>\$1,073.53</b>
<b>600 Supplies</b>				
610 General Supplies	21.19	13,843.72	220.00	14,084.91
<b>Total Supplies</b>	<b>\$21.19</b>	<b>\$13,843.72</b>	<b>\$220.00</b>	<b>\$14,084.91</b>
<b>800 Other Objects</b>				
810 Dues and Fees		400.00		400.00
<b>Total Other Objects</b>		<b>\$400.00</b>		<b>\$400.00</b>
<b>Total 2120 Guidance Services</b>	<b>\$1,610,087.49</b>	<b>\$1,001,453.68</b>	<b>\$220.00</b>	<b>\$2,611,761.17</b>

General Fund (10)

2130 Attendance Services

Elementary

Secondary

Federal

Total

100 Personnel Services – Salaries

100 Personnel Services – Salaries

569,295.95

**Total Personnel Services – Salaries**

**\$569,295.95**

200 Personnel Services – Employee Benefits

210 Group Insurance – Contracted Provider

3,159.26

220 Social Security Contributions

40,752.64

230 PSERS Retirement Contributions

188,074.05

270 Group Insurance – Self-Insurance

142,383.18

291 Other Retirement Plans

720.00

**Total Personnel Services – Employee Benefits**

**\$375,089.13**

500 Other Purchased Services

580 Travel

1,294.14

**Total Other Purchased Services**

**\$1,294.14**

600 Supplies

610 General Supplies

279.00

**Total Supplies**

**\$279.00**

**Total 2130 Attendance Services**

**\$945,958.22**

**General Fund (10)**

	<u>Elementary</u>	<u>Secondary</u>	<u>Federal</u>	<u>Total</u>
<b>2140 Psychological Services</b>				
<b>100 Personnel Services – Salaries</b>				
100 Personnel Services – Salaries	394,171.01	55,666.41		449,837.42
<b>Total Personnel Services – Salaries</b>	<b>\$394,171.01</b>	<b>\$55,666.41</b>		<b>\$449,837.42</b>
<b>200 Personnel Services – Employee Benefits</b>				
210 Group Insurance – Contracted Provider	337.48	1,693.25		2,030.73
220 Social Security Contributions	29,263.01	4,191.09		33,454.10
230 PSERS Retirement Contributions	135,062.34	19,067.21		154,129.55
270 Group Insurance – Self-Insurance	50,642.69	3,243.58		53,886.27
<b>Total Personnel Services – Employee Benefits</b>	<b>\$215,305.52</b>	<b>\$28,195.13</b>		<b>\$243,500.65</b>
<b>300 Purchased Professional and Technical Services</b>				
329 Professional Educational Services – Other	1,014.90			1,014.90
<b>Total Purchased Professional and Technical Services</b>	<b>\$1,014.90</b>			<b>\$1,014.90</b>
<b>500 Other Purchased Services</b>				
580 Travel	859.63	748.05		1,607.68
<b>Total Other Purchased Services</b>	<b>\$859.63</b>	<b>\$748.05</b>		<b>\$1,607.68</b>
<b>600 Supplies</b>				
610 General Supplies		262.50		262.50
<b>Total Supplies</b>		<b>\$262.50</b>		<b>\$262.50</b>
<b>Total 2140 Psychological Services</b>	<b>\$611,351.06</b>	<b>\$84,872.09</b>		<b>\$696,223.15</b>

General Fund (10)

2160 Social Work Services

Elementary

Secondary

Federal

Total

100 Personnel Services – Salaries

100 Personnel Services – Salaries

84,648.84

**Total Personnel Services – Salaries**

**\$84,648.84**

200 Personnel Services – Employee Benefits

210 Group Insurance – Contracted Provider

3,166.03

220 Social Security Contributions

6,441.09

230 PSERS Retirement Contributions

29,026.02

**Total Personnel Services – Employee Benefits**

**\$38,633.14**

600 Supplies

650 Supplies & Fees – Technology Related

105.53

**Total Supplies**

**\$105.53**

**Total 2160 Social Work Services**

**\$123,387.51**

General Fund (10)

2190 Other Student Services

100 Personnel Services – Salaries

	<u>Elementary</u>	<u>Secondary</u>	<u>Federal</u>	<u>Total</u>
100 Personnel Services – Salaries	77,118.29			77,118.29
<b>Total Personnel Services – Salaries</b>	<b>\$77,118.29</b>			<b>\$77,118.29</b>
<b>200 Personnel Services – Employee Benefits</b>				
210 Group Insurance – Contracted Provider	59.79			59.79
220 Social Security Contributions	5,903.78			5,903.78
230 PSERS Retirement Contributions	9,807.78			9,807.78
<b>Total Personnel Services – Employee Benefits</b>	<b>\$15,771.35</b>			<b>\$15,771.35</b>
<b>Total 2190 Other Student Services</b>	<b>\$92,889.64</b>			<b>\$92,889.64</b>

**Total Personnel Services – Salaries**

**200 Personnel Services – Employee Benefits**

**General Fund (10)**

**2200 Support Services – Instructional Staff**

	<u>Elementary</u>	<u>Secondary</u>	<u>Federal</u>	<u>Total</u>
<b>100 Personnel Services – Salaries</b>				
100 Personnel Services – Salaries	756,652.00	564,940.47		1,321,592.47
<b>Total Personnel Services – Salaries</b>	<b>\$756,652.00</b>	<b>\$564,940.47</b>		<b>\$1,321,592.47</b>
<b>200 Personnel Services – Employee Benefits</b>				
210 Group Insurance – Contracted Provider	4,017.91	9,159.15		13,177.06
220 Social Security Contributions	54,697.93	38,993.44		93,691.37
230 PSERS Retirement Contributions	259,187.58	193,449.46		452,637.04
240 Tuition Reimbursement	111,024.01	27,440.26		138,464.27
260 Workers' Compensation	7,187.28	3,868.39		11,055.67
270 Group Insurance – Self-Insurance	76,087.32	106,687.85		182,775.17
291 Other Retirement Plans	2,250.00	2,250.00		4,500.00
<b>Total Personnel Services – Employee Benefits</b>	<b>\$514,452.03</b>	<b>\$381,848.55</b>		<b>\$896,300.58</b>
<b>300 Purchased Professional and Technical Services</b>				
329 Professional Educational Services – Other	3,663.18	13,008.22	3,000.00	19,671.40
330 Other Professional Services	4,294.00	4,294.00		8,588.00
340 Technical Services	4,256.12	4,256.12		8,512.24
360 Employee Training and Development Services	31,101.00	34,645.49	17,765.59	83,512.08
390 Other Purchased Professional and Technical Services	2,608.93	2,608.92		5,217.85
<b>Total Purchased Professional and Technical Services</b>	<b>\$45,923.23</b>	<b>\$58,812.75</b>	<b>\$20,765.59</b>	<b>\$125,501.57</b>
<b>400 Purchased Property Services</b>				
430 Repairs and Maintenance Services	333.41	333.40		666.81
<b>Total Purchased Property Services</b>	<b>\$333.41</b>	<b>\$333.40</b>		<b>\$666.81</b>
<b>500 Other Purchased Services</b>				
530 Communications	340.50	340.50		681.00
580 Travel	4,447.56	4,789.13		9,236.69
<b>Total Other Purchased Services</b>	<b>\$4,788.06</b>	<b>\$5,129.63</b>		<b>\$9,917.69</b>
<b>600 Supplies</b>				
610 General Supplies	204,109.59	201,097.02		405,206.61
630 Food	1,156.01	580.44		1,736.45
640 Books and Periodicals	270,018.13	227,440.47	8,571.50	506,030.10
650 Supplies & Fees – Technology Related	100,950.50	148,892.45	1,200.00	251,042.95
<b>Total Supplies</b>	<b>\$576,234.23</b>	<b>\$578,010.38</b>	<b>\$9,771.50</b>	<b>\$1,164,016.11</b>
<b>700 Property</b>				
752 Capital Equipment – Original and Additional	287.55	287.55		575.10
762 Capitalized Equipment - Replacement	3,363.49	14,953.15		18,316.64
766 Capitalized Technology Equipment – Replacement			265,119.00	265,119.00
<b>Total Property</b>	<b>\$3,651.04</b>	<b>\$15,240.70</b>	<b>\$265,119.00</b>	<b>\$284,010.74</b>
<b>800 Other Objects</b>				
810 Dues and Fees	8,075.30	6,366.30		14,441.60
<b>Total Other Objects</b>	<b>\$8,075.30</b>	<b>\$6,366.30</b>		<b>\$14,441.60</b>
<b>Total 2200 Support Services – Instructional Staff</b>	<b>\$1,910,109.30</b>	<b>\$1,610,682.18</b>	<b>\$295,656.09</b>	<b>\$3,816,447.57</b>



**General Fund (10)**

**2220 Technology Support Services**

	<u>Elementary</u>	<u>Secondary</u>	<u>Federal</u>	<u>Total</u>
<b>600 Supplies</b>				
610 General Supplies	764.55	764.54		1,529.09
650 Supplies & Fees – Technology Related	28,261.42	28,261.42		56,522.84
<b>Total Supplies</b>	<b>\$29,025.97</b>	<b>\$29,025.96</b>		<b>\$58,051.93</b>
<b>700 Property</b>				
762 Capitalized Equipment - Replacement	3,363.49	3,363.49		6,726.98
766 Capitalized Technology Equipment – Replacement			265,119.00	265,119.00
<b>Total Property</b>	<b>\$3,363.49</b>	<b>\$3,363.49</b>	<b>\$265,119.00</b>	<b>\$271,845.98</b>
<b>Total 2220 Technology Support Services</b>	<b>\$32,389.46</b>	<b>\$32,389.45</b>	<b>\$265,119.00</b>	<b>\$329,897.91</b>

**General Fund (10)**

	<u>Elementary</u>	<u>Secondary</u>	<u>Federal</u>	<u>Total</u>
<b>2230 Educational Television Services</b>				
<b>100 Personnel Services – Salaries</b>				
100 Personnel Services – Salaries		97,203.82		97,203.82
<b>Total Personnel Services – Salaries</b>		<b>\$97,203.82</b>		<b>\$97,203.82</b>
<b>200 Personnel Services – Employee Benefits</b>				
210 Group Insurance – Contracted Provider		954.01		954.01
220 Social Security Contributions		6,886.98		6,886.98
230 PSERS Retirement Contributions		33,331.21		33,331.21
270 Group Insurance – Self-Insurance		20,022.17		20,022.17
<b>Total Personnel Services – Employee Benefits</b>		<b>\$61,194.37</b>		<b>\$61,194.37</b>
<b>300 Purchased Professional and Technical Services</b>				
329 Professional Educational Services – Other		11,100.00		11,100.00
<b>Total Purchased Professional and Technical Services</b>		<b>\$11,100.00</b>		<b>\$11,100.00</b>
<b>500 Other Purchased Services</b>				
580 Travel		341.59		341.59
<b>Total Other Purchased Services</b>		<b>\$341.59</b>		<b>\$341.59</b>
<b>600 Supplies</b>				
610 General Supplies		495.64		495.64
<b>Total Supplies</b>		<b>\$495.64</b>		<b>\$495.64</b>
<b>700 Property</b>				
762 Capitalized Equipment - Replacement		11,589.66		11,589.66
<b>Total Property</b>		<b>\$11,589.66</b>		<b>\$11,589.66</b>
<b>Total 2230 Educational Television Services</b>		<b>\$181,925.08</b>		<b>\$181,925.08</b>

**General Fund (10)**

**2250 School Library Services**

	<u>Elementary</u>	<u>Secondary</u>	<u>Federal</u>	<u>Total</u>
<b>100 Personnel Services – Salaries</b>				
100 Personnel Services – Salaries	466,132.97	180,661.23		646,794.20
<b>Total Personnel Services – Salaries</b>	<b>\$466,132.97</b>	<b>\$180,661.23</b>		<b>\$646,794.20</b>
<b>200 Personnel Services – Employee Benefits</b>				
210 Group Insurance – Contracted Provider	669.96	4,857.21		5,527.17
220 Social Security Contributions	34,886.50	12,551.29		47,437.79
230 PSERS Retirement Contributions	159,837.07	61,948.95		221,786.02
260 Workers' Compensation	5,689.30	2,370.42		8,059.72
270 Group Insurance – Self-Insurance	28,019.50	38,597.87		66,617.37
<b>Total Personnel Services – Employee Benefits</b>	<b>\$229,102.33</b>	<b>\$120,325.74</b>		<b>\$349,428.07</b>
<b>300 Purchased Professional and Technical Services</b>				
329 Professional Educational Services – Other	3,663.18	1,908.22		5,571.40
<b>Total Purchased Professional and Technical Services</b>	<b>\$3,663.18</b>	<b>\$1,908.22</b>		<b>\$5,571.40</b>
<b>400 Purchased Property Services</b>				
430 Repairs and Maintenance Services	333.41	333.40		666.81
<b>Total Purchased Property Services</b>	<b>\$333.41</b>	<b>\$333.40</b>		<b>\$666.81</b>
<b>600 Supplies</b>				
610 General Supplies	6,068.72	2,560.53		8,629.25
640 Books and Periodicals	56,604.72	14,027.07		70,631.79
650 Supplies & Fees – Technology Related	6,034.33	53,976.28		60,010.61
<b>Total Supplies</b>	<b>\$68,707.77</b>	<b>\$70,563.88</b>		<b>\$139,271.65</b>
<b>Total 2250 School Library Services</b>	<b>\$767,939.66</b>	<b>\$373,792.47</b>		<b>\$1,141,732.13</b>

**General Fund (10)**

**2260 Instruction and Curriculum Development Services**

	<u>Elementary</u>	<u>Secondary</u>	<u>Federal</u>	<u>Total</u>
<b>100 Personnel Services – Salaries</b>				
100 Personnel Services – Salaries	278,209.33	278,209.32		556,418.65
<b>Total Personnel Services – Salaries</b>	<b>\$278,209.33</b>	<b>\$278,209.32</b>		<b>\$556,418.65</b>
<b>200 Personnel Services – Employee Benefits</b>				
210 Group Insurance – Contracted Provider	3,347.95	3,347.93		6,695.88
220 Social Security Contributions	18,894.45	18,894.44		37,788.89
230 PSERS Retirement Contributions	95,135.34	95,135.33		190,270.67
260 Workers' Compensation	1,497.98	1,497.97		2,995.95
270 Group Insurance – Self-Insurance	48,067.82	48,067.81		96,135.63
291 Other Retirement Plans	2,250.00	2,250.00		4,500.00
<b>Total Personnel Services – Employee Benefits</b>	<b>\$169,193.54</b>	<b>\$169,193.48</b>		<b>\$338,387.02</b>
<b>300 Purchased Professional and Technical Services</b>				
329 Professional Educational Services – Other			3,000.00	3,000.00
330 Other Professional Services	4,294.00	4,294.00		8,588.00
340 Technical Services	4,256.12	4,256.12		8,512.24
390 Other Purchased Professional and Technical Services	2,608.93	2,608.92		5,217.85
<b>Total Purchased Professional and Technical Services</b>	<b>\$11,159.05</b>	<b>\$11,159.04</b>	<b>\$3,000.00</b>	<b>\$25,318.09</b>
<b>500 Other Purchased Services</b>				
530 Communications	340.50	340.50		681.00
580 Travel	3,173.27	3,173.26		6,346.53
<b>Total Other Purchased Services</b>	<b>\$3,513.77</b>	<b>\$3,513.76</b>		<b>\$7,027.53</b>
<b>600 Supplies</b>				
610 General Supplies	196,796.22	196,796.22		393,592.44
630 Food	575.57			575.57
640 Books and Periodicals	213,125.07	213,125.06	8,571.50	434,821.63
650 Supplies & Fees – Technology Related	66,654.75	66,654.75	1,200.00	134,509.50
<b>Total Supplies</b>	<b>\$477,151.61</b>	<b>\$476,576.03</b>	<b>\$9,771.50</b>	<b>\$963,499.14</b>
<b>700 Property</b>				
752 Capital Equipment – Original and Additional	287.55	287.55		575.10
<b>Total Property</b>	<b>\$287.55</b>	<b>\$287.55</b>		<b>\$575.10</b>
<b>800 Other Objects</b>				
810 Dues and Fees	1,709.00			1,709.00
<b>Total Other Objects</b>	<b>\$1,709.00</b>			<b>\$1,709.00</b>
<b>Total 2260 Instruction and Curriculum Development Services</b>	<b>\$941,223.85</b>	<b>\$938,939.18</b>	<b>\$12,771.50</b>	<b>\$1,892,934.53</b>

**General Fund (10)**

2270 Instructional Staff Professional Development Services	<u>Elementary</u>	<u>Secondary</u>	<u>Federal</u>	<u>Total</u>
<b>100 Personnel Services – Salaries</b>				
100 Personnel Services – Salaries	2,895.98	2,895.97		5,791.95
<b>Total Personnel Services – Salaries</b>	<b>\$2,895.98</b>	<b>\$2,895.97</b>		<b>\$5,791.95</b>
<b>200 Personnel Services – Employee Benefits</b>				
220 Social Security Contributions	215.67	215.67		431.34
230 PSERS Retirement Contributions	989.71	989.71		1,979.42
240 Tuition Reimbursement	111,024.01	27,440.26		138,464.27
<b>Total Personnel Services – Employee Benefits</b>	<b>\$112,229.39</b>	<b>\$28,645.64</b>		<b>\$140,875.03</b>
<b>300 Purchased Professional and Technical Services</b>				
360 Employee Training and Development Services	31,101.00	34,645.49	17,765.59	83,512.08
<b>Total Purchased Professional and Technical Services</b>	<b>\$31,101.00</b>	<b>\$34,645.49</b>	<b>\$17,765.59</b>	<b>\$83,512.08</b>
<b>500 Other Purchased Services</b>				
580 Travel	1,274.29	1,274.28		2,548.57
<b>Total Other Purchased Services</b>	<b>\$1,274.29</b>	<b>\$1,274.28</b>		<b>\$2,548.57</b>
<b>600 Supplies</b>				
610 General Supplies	480.10	480.09		960.19
630 Food	580.44	580.44		1,160.88
640 Books and Periodicals	288.34	288.34		576.68
<b>Total Supplies</b>	<b>\$1,348.88</b>	<b>\$1,348.87</b>		<b>\$2,697.75</b>
<b>800 Other Objects</b>				
810 Dues and Fees	6,366.30	6,366.30		12,732.60
<b>Total Other Objects</b>	<b>\$6,366.30</b>	<b>\$6,366.30</b>		<b>\$12,732.60</b>
<b>Total 2270 Instructional Staff Professional Development Services</b>	<b>\$155,215.84</b>	<b>\$75,176.55</b>	<b>\$17,765.59</b>	<b>\$248,157.98</b>

General Fund (10)

	<u>Elementary</u>	<u>Secondary</u>	<u>Federal</u>	<u>Total</u>
<b>2290 Other Instructional Staff Services</b>				
<b>100 Personnel Services – Salaries</b>				
100 Personnel Services – Salaries	9,413.72	5,970.13		15,383.85
<b>Total Personnel Services – Salaries</b>	<b>\$9,413.72</b>	<b>\$5,970.13</b>		<b>\$15,383.85</b>
<b>200 Personnel Services – Employee Benefits</b>				
220 Social Security Contributions	701.31	445.06		1,146.37
230 PSERS Retirement Contributions	3,225.46	2,044.26		5,269.72
<b>Total Personnel Services – Employee Benefits</b>	<b>\$3,926.77</b>	<b>\$2,489.32</b>		<b>\$6,416.09</b>
<b>Total 2290 Other Instructional Staff Services</b>	<b>\$13,340.49</b>	<b>\$8,459.45</b>		<b>\$21,799.94</b>

**General Fund (10)**

	<u>Elementary</u>	<u>Secondary</u>	<u>Federal</u>	<u>Total</u>
<b>2300 Support Services – Administration</b>				
<b>100 Personnel Services – Salaries</b>				
100 Personnel Services – Salaries	1,270,350.58	704,954.44		2,664,761.41
<b>Total Personnel Services – Salaries</b>	<b>\$1,270,350.58</b>	<b>\$704,954.44</b>		<b>\$2,664,761.41</b>
<b>200 Personnel Services – Employee Benefits</b>				
210 Group Insurance – Contracted Provider	8,973.94	11,379.43		27,079.78
220 Social Security Contributions	94,565.74	48,843.91		188,776.46
230 PSERS Retirement Contributions	432,257.73	238,742.59		883,131.52
260 Workers' Compensation	13,540.56	5,563.87		21,333.11
270 Group Insurance – Self-Insurance	168,721.35	122,301.40		374,799.97
291 Other Retirement Plans	14,500.00	7,500.00		30,500.00
<b>Total Personnel Services – Employee Benefits</b>	<b>\$732,559.32</b>	<b>\$434,331.20</b>		<b>\$1,525,620.84</b>
<b>300 Purchased Professional and Technical Services</b>				
329 Professional Educational Services – Other				13,007.57
330 Other Professional Services				541,417.12
340 Technical Services				1,000.00
390 Other Purchased Professional and Technical Services	327.77	327.76		69,094.86
<b>Total Purchased Professional and Technical Services</b>	<b>\$327.77</b>	<b>\$327.76</b>		<b>\$624,519.55</b>
<b>400 Purchased Property Services</b>				
440 Rentals	62,099.12	46,576.55		108,675.67
<b>Total Purchased Property Services</b>	<b>\$62,099.12</b>	<b>\$46,576.55</b>		<b>\$108,675.67</b>
<b>500 Other Purchased Services</b>				
520 Insurance – General				136,865.00
530 Communications	520.87	520.87		1,049.09
549 Other Advertising/Public Relations				7,237.34
580 Travel	747.97	236.84		2,716.49
599 Other Miscellaneous Purchased Services		6,718.96		6,718.96
<b>Total Other Purchased Services</b>	<b>\$1,268.84</b>	<b>\$7,476.67</b>		<b>\$154,586.88</b>
<b>600 Supplies</b>				
610 General Supplies	52.41	399.68		24,669.13
630 Food				1,605.41
640 Books and Periodicals	258.61	63.12		1,366.20
<b>Total Supplies</b>	<b>\$311.02</b>	<b>\$462.80</b>		<b>\$27,640.74</b>
<b>800 Other Objects</b>				
810 Dues and Fees	2,201.00	2,112.00		52,566.03
820 Claims and Judgments Against the LEA				2,500.00
<b>Total Other Objects</b>	<b>\$2,201.00</b>	<b>\$2,112.00</b>		<b>\$55,066.03</b>
<b>Total 2300 Support Services – Administration</b>	<b>\$2,069,117.65</b>	<b>\$1,196,241.42</b>		<b>\$5,160,871.12</b>

**General Fund (10)**

**2310 Board Services**

Elementary                      Secondary                      Federal                      Total

<b>100</b>	<b><u>Personnel Services – Salaries</u></b>			
	100 Personnel Services – Salaries			2,602.80
	<b>Total Personnel Services – Salaries</b>			<b>\$2,602.80</b>
<b>200</b>	<b><u>Personnel Services – Employee Benefits</u></b>			
	220 Social Security Contributions			188.59
	230 PSERS Retirement Contributions			892.56
	<b>Total Personnel Services – Employee Benefits</b>			<b>\$1,081.15</b>
<b>300</b>	<b><u>Purchased Professional and Technical Services</u></b>			
	329 Professional Educational Services – Other			13,007.57
	330 Other Professional Services			23,500.00
	390 Other Purchased Professional and Technical Services			4,680.00
	<b>Total Purchased Professional and Technical Services</b>			<b>\$41,187.57</b>
<b>500</b>	<b><u>Other Purchased Services</u></b>			
	520 Insurance – General			136,865.00
	530 Communications			7.35
	549 Other Advertising/Public Relations			4,004.30
	580 Travel			332.33
	<b>Total Other Purchased Services</b>			<b>\$141,208.98</b>
<b>600</b>	<b><u>Supplies</u></b>			
	610 General Supplies			7,590.71
	630 Food			1,166.23
	640 Books and Periodicals			189.47
	<b>Total Supplies</b>			<b>\$8,946.41</b>
<b>800</b>	<b><u>Other Objects</u></b>			
	810 Dues and Fees			13,325.00
	820 Claims and Judgments Against the LEA			2,500.00
	<b>Total Other Objects</b>			<b>\$15,825.00</b>
	<b>Total 2310 Board Services</b>			<b>\$210,851.91</b>



General Fund (10)

	<u>Elementary</u>	<u>Secondary</u>	<u>Federal</u>	<u>Total</u>
<b>2330 Tax Assessment and Collection Services</b>				
<b>100 Personnel Services – Salaries</b>				
100 Personnel Services – Salaries				69,358.96
<b>Total Personnel Services – Salaries</b>				<b>\$69,358.96</b>
<b>200 Personnel Services – Employee Benefits</b>				
220 Social Security Contributions				5,305.49
<b>Total Personnel Services – Employee Benefits</b>				<b>\$5,305.49</b>
<b>300 Purchased Professional and Technical Services</b>				
390 Other Purchased Professional and Technical Services				63,759.33
<b>Total Purchased Professional and Technical Services</b>				<b>\$63,759.33</b>
<b>600 Supplies</b>				
610 General Supplies				11,115.35
<b>Total Supplies</b>				<b>\$11,115.35</b>
<b>800 Other Objects</b>				
810 Dues and Fees				108.10
<b>Total Other Objects</b>				<b>\$108.10</b>
<b>Total 2330 Tax Assessment and Collection Services</b>				<b>\$149,647.23</b>

**General Fund (10)**

**2340 Staff Relations and Negotiations Services**

Elementary                      Secondary                      Federal                      Total

<b>100 Personnel Services – Salaries</b>				
100 Personnel Services – Salaries				282,571.29
<b>Total Personnel Services – Salaries</b>				<b>\$282,571.29</b>
<b>200 Personnel Services – Employee Benefits</b>				
210 Group Insurance – Contracted Provider				4,012.66
220 Social Security Contributions				20,198.23
230 PSERS Retirement Contributions				96,893.47
260 Workers' Compensation				1,899.43
270 Group Insurance – Self-Insurance				58,374.46
291 Other Retirement Plans				1,500.00
<b>Total Personnel Services – Employee Benefits</b>				<b>\$182,878.25</b>
<b>300 Purchased Professional and Technical Services</b>				
330 Other Professional Services				16,320.13
340 Technical Services				1,000.00
<b>Total Purchased Professional and Technical Services</b>				<b>\$17,320.13</b>
<b>500 Other Purchased Services</b>				
549 Other Advertising/Public Relations				3,233.04
<b>Total Other Purchased Services</b>				<b>\$3,233.04</b>
<b>600 Supplies</b>				
610 General Supplies				515.70
<b>Total Supplies</b>				<b>\$515.70</b>
<b>800 Other Objects</b>				
810 Dues and Fees				2,183.93
<b>Total Other Objects</b>				<b>\$2,183.93</b>
<b>Total 2340 Staff Relations and Negotiations Services</b>				<b>\$488,702.34</b>

General Fund (10)

2350 Legal and Accounting Services

Elementary

Secondary

Federal

Total

300 Purchased Professional and Technical Services

330 Other Professional Services

501,596.99

**Total Purchased Professional and Technical Services**

**\$501,596.99**

**Total 2350 Legal and Accounting Services**

**\$501,596.99**

**General Fund (10)**

**2360 Office of the Superintendent / Executive Director Services**

	<u>Elementary</u>	<u>Secondary</u>	<u>Federal</u>	<u>Total</u>
<b>100 Personnel Services – Salaries</b>				
100 Personnel Services – Salaries				267,762.63
<b>Total Personnel Services – Salaries</b>				<b>\$267,762.63</b>
<b>200 Personnel Services – Employee Benefits</b>				
210 Group Insurance – Contracted Provider				2,843.35
220 Social Security Contributions				15,183.11
230 PSERS Retirement Contributions				91,315.72
270 Group Insurance – Self-Insurance				4,987.12
291 Other Retirement Plans				7,000.00
<b>Total Personnel Services – Employee Benefits</b>				<b>\$121,329.30</b>
<b>500 Other Purchased Services</b>				
530 Communications	520.87	520.87		1,041.74
580 Travel				1,399.35
<b>Total Other Purchased Services</b>	<b>\$520.87</b>	<b>\$520.87</b>		<b>\$2,441.09</b>
<b>600 Supplies</b>				
610 General Supplies				4,495.31
630 Food				439.18
640 Books and Periodicals				855.00
<b>Total Supplies</b>				<b>\$5,789.49</b>
<b>800 Other Objects</b>				
810 Dues and Fees				2,586.00
<b>Total Other Objects</b>				<b>\$2,586.00</b>
<b>Total 2360 Office of the Superintendent / Executive Director Services</b>	<b>\$520.87</b>	<b>\$520.87</b>		<b>\$399,908.51</b>

**General Fund (10)**

**2370 Community Relations Services**

Elementary                      Secondary                      Federal                      Total

**100 Personnel Services – Salaries**

100 Personnel Services – Salaries 67,160.71

**Total Personnel Services – Salaries \$67,160.71**

**200 Personnel Services – Employee Benefits**

210 Group Insurance – Contracted Provider (129.60)

220 Social Security Contributions 4,491.39

230 PSERS Retirement Contributions 23,029.45

260 Workers' Compensation 329.25

270 Group Insurance – Self-Insurance 20,415.64

**Total Personnel Services – Employee Benefits \$48,136.13**

**600 Supplies**

610 General Supplies 499.97

**Total Supplies \$499.97**

**800 Other Objects**

810 Dues and Fees 50.00

**Total Other Objects \$50.00**

**Total 2370 Community Relations Services \$115,846.81**

**General Fund (10)**

**2380 Office of the Principal Services**

	<u>Elementary</u>	<u>Secondary</u>	<u>Federal</u>	<u>Total</u>
<b>100 Personnel Services – Salaries</b>				
100 Personnel Services – Salaries	1,270,350.58	704,954.44		1,975,305.02
<b>Total Personnel Services – Salaries</b>	<b>\$1,270,350.58</b>	<b>\$704,954.44</b>		<b>\$1,975,305.02</b>
<b>200 Personnel Services – Employee Benefits</b>				
210 Group Insurance – Contracted Provider	8,973.94	11,379.43		20,353.37
220 Social Security Contributions	94,565.74	48,843.91		143,409.65
230 PSERS Retirement Contributions	432,257.73	238,742.59		671,000.32
260 Workers' Compensation	13,540.56	5,563.87		19,104.43
270 Group Insurance – Self-Insurance	168,721.35	122,301.40		291,022.75
291 Other Retirement Plans	14,500.00	7,500.00		22,000.00
<b>Total Personnel Services – Employee Benefits</b>	<b>\$732,559.32</b>	<b>\$434,331.20</b>		<b>\$1,166,890.52</b>
<b>300 Purchased Professional and Technical Services</b>				
390 Other Purchased Professional and Technical Services	327.77	327.76		655.53
<b>Total Purchased Professional and Technical Services</b>	<b>\$327.77</b>	<b>\$327.76</b>		<b>\$655.53</b>
<b>400 Purchased Property Services</b>				
440 Rentals	62,099.12	46,576.55		108,675.67
<b>Total Purchased Property Services</b>	<b>\$62,099.12</b>	<b>\$46,576.55</b>		<b>\$108,675.67</b>
<b>500 Other Purchased Services</b>				
580 Travel	747.97	236.84		984.81
599 Other Miscellaneous Purchased Services		6,718.96		6,718.96
<b>Total Other Purchased Services</b>	<b>\$747.97</b>	<b>\$6,955.80</b>		<b>\$7,703.77</b>
<b>600 Supplies</b>				
610 General Supplies	52.41	399.68		452.09
640 Books and Periodicals	258.61	63.12		321.73
<b>Total Supplies</b>	<b>\$311.02</b>	<b>\$462.80</b>		<b>\$773.82</b>
<b>800 Other Objects</b>				
810 Dues and Fees	2,201.00	2,112.00		4,313.00
<b>Total Other Objects</b>	<b>\$2,201.00</b>	<b>\$2,112.00</b>		<b>\$4,313.00</b>
<b>Total 2380 Office of the Principal Services</b>	<b>\$2,068,596.78</b>	<b>\$1,195,720.55</b>		<b>\$3,264,317.33</b>

LEA : 123468402 Upper Merion Area SD

Printed 11/17/2020 11:29:27 AM

General Fund (10)

2390 Other Administration Services

Elementary

Secondary

Federal

Total

800 Other Objects

810 Dues and Fees

30,000.00

**Total Other Objects**

**\$30,000.00**

**Total 2390 Other Administration Services**

**\$30,000.00**

**General Fund (10)**

**2400 Support Services – Pupil Health**

Elementary                      Secondary                      Federal                      Total

<b>100</b>	<b><u>Personnel Services – Salaries</u></b>			
	100 Personnel Services – Salaries			762,418.39
<b>Total Personnel Services – Salaries</b>				<b>\$762,418.39</b>
<b>200</b>	<b><u>Personnel Services – Employee Benefits</u></b>			
	210 Group Insurance – Contracted Provider			4,622.40
	220 Social Security Contributions			54,128.52
	230 PSERS Retirement Contributions			252,457.77
	270 Group Insurance – Self-Insurance			119,436.94
<b>Total Personnel Services – Employee Benefits</b>				<b>\$430,645.63</b>
<b>300</b>	<b><u>Purchased Professional and Technical Services</u></b>			
	329 Professional Educational Services – Other			95,618.75
	330 Other Professional Services			19,191.75
<b>Total Purchased Professional and Technical Services</b>				<b>\$114,810.50</b>
<b>400</b>	<b><u>Purchased Property Services</u></b>			
	430 Repairs and Maintenance Services			73.34
<b>Total Purchased Property Services</b>				<b>\$73.34</b>
<b>500</b>	<b><u>Other Purchased Services</u></b>			
	580 Travel			403.10
<b>Total Other Purchased Services</b>				<b>\$403.10</b>
<b>600</b>	<b><u>Supplies</u></b>			
	610 General Supplies			12,164.72
	630 Food			127.66
<b>Total Supplies</b>				<b>\$12,292.38</b>
<b>700</b>	<b><u>Property</u></b>			
	762 Capitalized Equipment - Replacement			9,641.46
<b>Total Property</b>				<b>\$9,641.46</b>
<b>Total 2400 Support Services – Pupil Health</b>				<b>\$1,330,284.80</b>





General Fund (10)

2430 Dental Services

Elementary

Secondary

Federal

Total

100 Personnel Services – Salaries

100 Personnel Services – Salaries

18,327.00

**Total Personnel Services – Salaries**

**\$18,327.00**

200 Personnel Services – Employee Benefits

220 Social Security Contributions

1,195.51

230 PSERS Retirement Contributions

6,284.41

**Total Personnel Services – Employee Benefits**

**\$7,479.92**

600 Supplies

610 General Supplies

400.83

**Total Supplies**

**\$400.83**

**Total 2430 Dental Services**

**\$26,207.75**

General Fund (10)

2490 Other Health Services

Elementary

Secondary

Federal

Total

100 Personnel Services – Salaries

100 Personnel Services – Salaries

47,941.74

**Total Personnel Services – Salaries**

**\$47,941.74**

200 Personnel Services – Employee Benefits

220 Social Security Contributions

3,667.54

230 PSERS Retirement Contributions

16,391.64

**Total Personnel Services – Employee Benefits**

**\$20,059.18**

300 Purchased Professional and Technical Services

329 Professional Educational Services – Other

95,618.75

**Total Purchased Professional and Technical Services**

**\$95,618.75**

500 Other Purchased Services

580 Travel

259.86

**Total Other Purchased Services**

**\$259.86**

600 Supplies

610 General Supplies

3,326.44

630 Food

127.66

**Total Supplies**

**\$3,454.10**

**Total 2490 Other Health Services**

**\$167,333.63**

General Fund (10)

2500 Support Services – Business

Elementary                      Secondary                      Federal                      Total

100 Personnel Services – Salaries

100 Personnel Services – Salaries 521,569.10

**Total Personnel Services – Salaries \$521,569.10**

200 Personnel Services – Employee Benefits

210 Group Insurance – Contracted Provider 7,276.57

220 Social Security Contributions 34,505.60

230 PSERS Retirement Contributions 170,208.00

260 Workers' Compensation 3,390.99

270 Group Insurance – Self-Insurance 122,715.28

291 Other Retirement Plans 1,500.00

**Total Personnel Services – Employee Benefits \$339,596.44**

300 Purchased Professional and Technical Services

310 Official / Administrative Services 53.50

340 Technical Services 38,298.00

390 Other Purchased Professional and Technical Services 24,999.96

**Total Purchased Professional and Technical Services \$63,351.46**

400 Purchased Property Services

440 Rentals 8,088.82

**Total Purchased Property Services \$8,088.82**

500 Other Purchased Services

530 Communications 40,543.31

549 Other Advertising/Public Relations 3,327.03

580 Travel 474.55

**Total Other Purchased Services \$44,344.89**

600 Supplies

610 General Supplies 16,712.65

640 Books and Periodicals 403.00

**Total Supplies \$17,115.65**

800 Other Objects

810 Dues and Fees 12,185.47

**Total Other Objects \$12,185.47**

**Total 2500 Support Services – Business \$1,006,251.83**

**General Fund (10)**

**2510 Fiscal Services**

Elementary                      Secondary                      Federal                      Total

<b>100</b>	<b><u>Personnel Services – Salaries</u></b>			
	100 Personnel Services – Salaries			369,166.64
<b>Total Personnel Services – Salaries</b>				<b>\$369,166.64</b>
<b>200</b>	<b><u>Personnel Services – Employee Benefits</u></b>			
	210 Group Insurance – Contracted Provider			8,687.89
	220 Social Security Contributions			23,370.27
	230 PSERS Retirement Contributions			119,315.75
	260 Workers' Compensation			3,390.99
	270 Group Insurance – Self-Insurance			80,453.18
	291 Other Retirement Plans			1,500.00
<b>Total Personnel Services – Employee Benefits</b>				<b>\$236,718.08</b>
<b>300</b>	<b><u>Purchased Professional and Technical Services</u></b>			
	310 Official / Administrative Services			53.50
	340 Technical Services			38,298.00
	390 Other Purchased Professional and Technical Services			24,999.96
<b>Total Purchased Professional and Technical Services</b>				<b>\$63,351.46</b>
<b>400</b>	<b><u>Purchased Property Services</u></b>			
	440 Rentals			8,088.82
<b>Total Purchased Property Services</b>				<b>\$8,088.82</b>
<b>500</b>	<b><u>Other Purchased Services</u></b>			
	530 Communications			40,543.31
	549 Other Advertising/Public Relations			3,327.03
	580 Travel			474.55
<b>Total Other Purchased Services</b>				<b>\$44,344.89</b>
<b>600</b>	<b><u>Supplies</u></b>			
	610 General Supplies			16,712.65
	640 Books and Periodicals			403.00
<b>Total Supplies</b>				<b>\$17,115.65</b>
<b>800</b>	<b><u>Other Objects</u></b>			
	810 Dues and Fees			12,185.47
<b>Total Other Objects</b>				<b>\$12,185.47</b>
<b>Total 2510 Fiscal Services</b>				<b>\$750,971.01</b>

General Fund (10)

2511 Supervision of Fiscal Services - Head of Component

Elementary

Secondary

Federal

Total

100 Personnel Services – Salaries

100 Personnel Services – Salaries

177,575.40

**Total Personnel Services – Salaries**

**\$177,575.40**

200 Personnel Services – Employee Benefits

210 Group Insurance – Contracted Provider

1,642.57

220 Social Security Contributions

10,911.56

230 PSERS Retirement Contributions

59,750.28

270 Group Insurance – Self-Insurance

22,368.98

291 Other Retirement Plans

1,500.00

**Total Personnel Services – Employee Benefits**

**\$96,173.39**

500 Other Purchased Services

580 Travel

174.55

**Total Other Purchased Services**

**\$174.55**

800 Other Objects

810 Dues and Fees

217.00

**Total Other Objects**

**\$217.00**

**Total 2511 Supervision of Fiscal Services - Head of Component**

**\$274,140.34**

General Fund (10)

	<u>Elementary</u>	<u>Secondary</u>	<u>Federal</u>	<u>Total</u>
<b>2515 Financial Accounting Services</b>				
<b>100 Personnel Services – Salaries</b>				
100 Personnel Services – Salaries				191,591.24
<b>Total Personnel Services – Salaries</b>				<b>\$191,591.24</b>
<b>200 Personnel Services – Employee Benefits</b>				
210 Group Insurance – Contracted Provider				7,045.32
220 Social Security Contributions				12,458.71
230 PSERS Retirement Contributions				59,565.47
260 Workers' Compensation				3,390.99
270 Group Insurance – Self-Insurance				58,084.20
<b>Total Personnel Services – Employee Benefits</b>				<b>\$140,544.69</b>
<b>300 Purchased Professional and Technical Services</b>				
310 Official / Administrative Services				53.50
340 Technical Services				38,298.00
390 Other Purchased Professional and Technical Services				24,999.96
<b>Total Purchased Professional and Technical Services</b>				<b>\$63,351.46</b>
<b>400 Purchased Property Services</b>				
440 Rentals				8,088.82
<b>Total Purchased Property Services</b>				<b>\$8,088.82</b>
<b>500 Other Purchased Services</b>				
530 Communications				40,543.31
549 Other Advertising/Public Relations				3,327.03
580 Travel				300.00
<b>Total Other Purchased Services</b>				<b>\$44,170.34</b>
<b>600 Supplies</b>				
610 General Supplies				16,712.65
640 Books and Periodicals				403.00
<b>Total Supplies</b>				<b>\$17,115.65</b>
<b>800 Other Objects</b>				
810 Dues and Fees				11,968.47
<b>Total Other Objects</b>				<b>\$11,968.47</b>
<b>Total 2515 Financial Accounting Services</b>				<b>\$476,830.67</b>

General Fund (10)

2520 Purchasing Services

Elementary

Secondary

Federal

Total

100 Personnel Services – Salaries

100 Personnel Services – Salaries

87,247.95

**Total Personnel Services – Salaries**

**\$87,247.95**

200 Personnel Services – Employee Benefits

210 Group Insurance – Contracted Provider

(537.24)

220 Social Security Contributions

6,383.56

230 PSERS Retirement Contributions

28,550.67

270 Group Insurance – Self-Insurance

23,127.82

**Total Personnel Services – Employee Benefits**

**\$57,524.81**

**Total 2520 Purchasing Services**

**\$144,772.76**



General Fund (10)

2530 Warehousing and Distributing Services

Elementary

Secondary

Federal

Total

100 Personnel Services – Salaries

100 Personnel Services – Salaries

65,154.51

**Total Personnel Services – Salaries**

**\$65,154.51**

200 Personnel Services – Employee Benefits

210 Group Insurance – Contracted Provider

(874.08)

220 Social Security Contributions

4,751.77

230 PSERS Retirement Contributions

22,341.58

270 Group Insurance – Self-Insurance

19,134.28

**Total Personnel Services – Employee Benefits**

**\$45,353.55**

**Total 2530 Warehousing and Distributing Services**

**\$110,508.06**



**General Fund (10)**

**2610 Supervision of Operation and Maintenance of Plant Services**

Elementary                      Secondary                      Federal                      Total

<b>100 Personnel Services – Salaries</b>				
100 Personnel Services – Salaries				365,212.66
<b>Total Personnel Services – Salaries</b>				<b>\$365,212.66</b>
<b>200 Personnel Services – Employee Benefits</b>				
210 Group Insurance – Contracted Provider				3,437.27
220 Social Security Contributions				26,521.77
230 PSERS Retirement Contributions				124,316.54
260 Workers' Compensation				1,679.03
270 Group Insurance – Self-Insurance				51,461.63
291 Other Retirement Plans				1,500.00
<b>Total Personnel Services – Employee Benefits</b>				<b>\$208,916.24</b>
<b>400 Purchased Property Services</b>				
430 Repairs and Maintenance Services				24,708.00
<b>Total Purchased Property Services</b>				<b>\$24,708.00</b>
<b>500 Other Purchased Services</b>				
580 Travel				4,694.02
<b>Total Other Purchased Services</b>				<b>\$4,694.02</b>
<b>600 Supplies</b>				
610 General Supplies	8,529.50	8,529.50		17,059.00
<b>Total Supplies</b>	<b>\$8,529.50</b>	<b>\$8,529.50</b>		<b>\$17,059.00</b>
<b>800 Other Objects</b>				
810 Dues and Fees				1,579.87
<b>Total Other Objects</b>				<b>\$1,579.87</b>
<b>Total 2610 Supervision of Operation and Maintenance of Plant Services</b>	<b>\$8,529.50</b>	<b>\$8,529.50</b>		<b>\$622,169.79</b>

General Fund (10)

2611 Supervision of Operation and Maintenance of Plant Services – Head of Component

Elementary

Secondary

Federal

Total

100 Personnel Services – Salaries

100 Personnel Services – Salaries

208,987.74

**Total Personnel Services – Salaries**

**\$208,987.74**

200 Personnel Services – Employee Benefits

210 Group Insurance – Contracted Provider

1,994.13

220 Social Security Contributions

15,326.09

230 PSERS Retirement Contributions

70,747.00

260 Workers' Compensation

1,679.03

270 Group Insurance – Self-Insurance

26,748.46

291 Other Retirement Plans

1,500.00

**Total Personnel Services – Employee Benefits**

**\$117,994.71**

**Total 2611 Supervision of Operation and Maintenance of Plant Services – Head of Component**

**\$326,982.45**

General Fund (10)

2619 Supervision of Operation and Maintenance of Plant Services – All Other Supervision

Elementary

Secondary

Federal

Total

100 Personnel Services – Salaries

100 Personnel Services – Salaries 156,224.92

**Total Personnel Services – Salaries \$156,224.92**

200 Personnel Services – Employee Benefits

210 Group Insurance – Contracted Provider 1,443.14

220 Social Security Contributions 11,195.68

230 PSERS Retirement Contributions 53,569.54

270 Group Insurance – Self-Insurance 24,713.17

**Total Personnel Services – Employee Benefits \$90,921.53**

400 Purchased Property Services

430 Repairs and Maintenance Services 24,708.00

**Total Purchased Property Services \$24,708.00**

500 Other Purchased Services

580 Travel 4,694.02

**Total Other Purchased Services \$4,694.02**

600 Supplies

610 General Supplies 8,529.50 8,529.50 17,059.00

**Total Supplies \$8,529.50 \$8,529.50 \$17,059.00**

800 Other Objects

810 Dues and Fees 1,579.87

**Total Other Objects \$1,579.87**

**Total 2619 Supervision of Operation and Maintenance of Plant Services – All Other Supervision**

**\$8,529.50 \$8,529.50 \$295,187.34**

**General Fund (10)**

**2620 Operation of Buildings Services**

**100 Personnel Services – Salaries**

100 Personnel Services – Salaries				2,834,510.83
-----------------------------------	--	--	--	--------------

<b>Total Personnel Services – Salaries</b>				<b>\$2,834,510.83</b>
--	--	--	--	-----------------------

**200 Personnel Services – Employee Benefits**

210 Group Insurance – Contracted Provider				33,753.89
---	--	--	--	-----------

220 Social Security Contributions				209,400.16
-----------------------------------	--	--	--	------------

230 PSERS Retirement Contributions				960,856.12
------------------------------------	--	--	--	------------

250 Unemployment Compensation				7,130.88
-------------------------------	--	--	--	----------

260 Workers' Compensation				88,518.18
---------------------------	--	--	--	-----------

270 Group Insurance – Self-Insurance				518,639.00
--------------------------------------	--	--	--	------------

<b>Total Personnel Services – Employee Benefits</b>				<b>\$1,818,298.23</b>
---	--	--	--	-----------------------

**300 Purchased Professional and Technical Services**

340 Technical Services				3,417.12
------------------------	--	--	--	----------

<b>Total Purchased Professional and Technical Services</b>				<b>\$3,417.12</b>
--	--	--	--	-------------------

**400 Purchased Property Services**

410 Cleaning Services				62,541.64
-----------------------	--	--	--	-----------

420 Utility Services				189,010.08
----------------------	--	--	--	------------

430 Repairs and Maintenance Services				141,931.30
--------------------------------------	--	--	--	------------

440 Rentals				22,476.89
-------------	--	--	--	-----------

490 Other Purchased Property Services				10,138.85
---------------------------------------	--	--	--	-----------

<b>Total Purchased Property Services</b>				<b>\$426,098.76</b>
--	--	--	--	---------------------

**500 Other Purchased Services**

521 Fire Insurance				31,007.01
--------------------	--	--	--	-----------

523 General Property and Liability Insurance				235,427.98
--	--	--	--	------------

529 Other Insurance				36,639.00
---------------------	--	--	--	-----------

530 Communications				191,075.35
--------------------	--	--	--	------------

599 Other Miscellaneous Purchased Services				13,807.36
--	--	--	--	-----------

<b>Total Other Purchased Services</b>				<b>\$507,956.70</b>
---------------------------------------	--	--	--	---------------------

**600 Supplies**

610 General Supplies	296,612.00	296,611.94	7,241.48	600,465.42
----------------------	------------	------------	----------	------------

620 Energy				635,605.00
------------	--	--	--	------------

<b>Total Supplies</b>	<b>\$296,612.00</b>	<b>\$296,611.94</b>	<b>\$7,241.48</b>	<b>\$1,236,070.42</b>
-----------------------	---------------------	---------------------	-------------------	-----------------------

<b>Total 2620 Operation of Buildings Services</b>	<b>\$296,612.00</b>	<b>\$296,611.94</b>	<b>\$7,241.48</b>	<b>\$6,826,352.06</b>
---	---------------------	---------------------	-------------------	-----------------------

**General Fund (10)**

	<u>Elementary</u>	<u>Secondary</u>	<u>Federal</u>	<u>Total</u>
<b>2630 Care and Upkeep of Grounds Services</b>				
<b>100 Personnel Services – Salaries</b>				
100 Personnel Services – Salaries				369,755.12
<b>Total Personnel Services – Salaries</b>				<b>\$369,755.12</b>
<b>200 Personnel Services – Employee Benefits</b>				
210 Group Insurance – Contracted Provider				2,616.16
220 Social Security Contributions				27,801.22
230 PSERS Retirement Contributions				126,788.96
260 Workers' Compensation				8,879.28
270 Group Insurance – Self-Insurance				38,541.42
<b>Total Personnel Services – Employee Benefits</b>				<b>\$204,627.04</b>
<b>400 Purchased Property Services</b>				
440 Rentals				2,000.00
490 Other Purchased Property Services				2,556.00
<b>Total Purchased Property Services</b>				<b>\$4,556.00</b>
<b>600 Supplies</b>				
610 General Supplies	52,200.39	52,200.34		104,400.73
<b>Total Supplies</b>	<b>\$52,200.39</b>	<b>\$52,200.34</b>		<b>\$104,400.73</b>
<b>Total 2630 Care and Upkeep of Grounds Services</b>	<b>\$52,200.39</b>	<b>\$52,200.34</b>		<b>\$683,338.89</b>

**General Fund (10)**

**2660 Safety and Security Services**

**100 Personnel Services – Salaries**

	<u>Elementary</u>	<u>Secondary</u>	<u>Federal</u>	<u>Total</u>
100 Personnel Services – Salaries				408,392.62
<b>Total Personnel Services – Salaries</b>				<b>\$408,392.62</b>
<b>200 Personnel Services – Employee Benefits</b>				
210 Group Insurance – Contracted Provider				6,394.85
220 Social Security Contributions				29,500.35
230 PSERS Retirement Contributions				138,838.86
260 Workers' Compensation				228.03
270 Group Insurance – Self-Insurance				72,538.50
<b>Total Personnel Services – Employee Benefits</b>				<b>\$247,500.59</b>
<b>300 Purchased Professional and Technical Services</b>				
330 Other Professional Services				492.25
350 Security / Safety Services				14,920.00
<b>Total Purchased Professional and Technical Services</b>				<b>\$15,412.25</b>
<b>400 Purchased Property Services</b>				
430 Repairs and Maintenance Services				67,586.63
<b>Total Purchased Property Services</b>				<b>\$67,586.63</b>
<b>500 Other Purchased Services</b>				
530 Communications				1,813.82
580 Travel				1,786.10
<b>Total Other Purchased Services</b>				<b>\$3,599.92</b>
<b>600 Supplies</b>				
610 General Supplies	14,503.73	14,503.73		29,007.46
<b>Total Supplies</b>	<b>\$14,503.73</b>	<b>\$14,503.73</b>		<b>\$29,007.46</b>
<b>Total 2660 Safety and Security Services</b>	<b>\$14,503.73</b>	<b>\$14,503.73</b>		<b>\$771,499.47</b>



General Fund (10)

	<u>Elementary</u>	<u>Secondary</u>	<u>Federal</u>	<u>Total</u>
<b>2700 Student Transportation Services</b>				
<b>100 Personnel Services – Salaries</b>				
100 Personnel Services – Salaries				228,897.13
<b>Total Personnel Services – Salaries</b>				<b>\$228,897.13</b>
<b>200 Personnel Services – Employee Benefits</b>				
210 Group Insurance – Contracted Provider				718.38
220 Social Security Contributions				17,389.25
230 PSERS Retirement Contributions				77,981.35
250 Unemployment Compensation				392.00
260 Workers' Compensation				232.84
270 Group Insurance – Self-Insurance				15,511.83
291 Other Retirement Plans				1,500.00
<b>Total Personnel Services – Employee Benefits</b>				<b>\$113,725.65</b>
<b>300 Purchased Professional and Technical Services</b>				
340 Technical Services				35,271.50
<b>Total Purchased Professional and Technical Services</b>				<b>\$35,271.50</b>
<b>400 Purchased Property Services</b>				
440 Rentals				2,651.19
<b>Total Purchased Property Services</b>				<b>\$2,651.19</b>
<b>500 Other Purchased Services</b>				
513 Contracted Carriers				2,819,517.69
516 Student Transportation Services From the IU				665,633.21
524 Other Pupil Transportation Insurance				29,076.01
530 Communications				468.16
<b>Total Other Purchased Services</b>				<b>\$3,514,695.07</b>
<b>600 Supplies</b>				
610 General Supplies				856.51
620 Energy				172,401.66
<b>Total Supplies</b>				<b>\$173,258.17</b>
<b>800 Other Objects</b>				
810 Dues and Fees				787.35
<b>Total Other Objects</b>				<b>\$787.35</b>
<b>Total 2700 Student Transportation Services</b>				<b>\$4,069,286.06</b>

General Fund (10)

2710 Supervision of Student Transportation Services

Elementary

Secondary

Federal

Total

100 Personnel Services – Salaries

100 Personnel Services – Salaries

90,688.76

**Total Personnel Services – Salaries**

**\$90,688.76**

200 Personnel Services – Employee Benefits

210 Group Insurance – Contracted Provider

908.29

220 Social Security Contributions

6,898.64

230 PSERS Retirement Contributions

30,514.90

270 Group Insurance – Self-Insurance

6,469.05

291 Other Retirement Plans

1,500.00

**Total Personnel Services – Employee Benefits**

**\$46,290.88**

300 Purchased Professional and Technical Services

340 Technical Services

35,271.50

**Total Purchased Professional and Technical Services**

**\$35,271.50**

500 Other Purchased Services

530 Communications

468.16

**Total Other Purchased Services**

**\$468.16**

800 Other Objects

810 Dues and Fees

787.35

**Total Other Objects**

**\$787.35**

**Total 2710 Supervision of Student Transportation Services**

**\$173,506.65**

**General Fund (10)**

**2711 Supervision of Student Transportation Services – Head of Component**

	<u>Elementary</u>	<u>Secondary</u>	<u>Federal</u>	<u>Total</u>
<b>100 Personnel Services – Salaries</b>				
100 Personnel Services – Salaries				90,688.76
<b>Total Personnel Services – Salaries</b>				<b>\$90,688.76</b>
<b>200 Personnel Services – Employee Benefits</b>				
210 Group Insurance – Contracted Provider				908.29
220 Social Security Contributions				6,898.64
230 PSERS Retirement Contributions				30,514.90
270 Group Insurance – Self-Insurance				6,469.05
291 Other Retirement Plans				1,500.00
<b>Total Personnel Services – Employee Benefits</b>				<b>\$46,290.88</b>
<b>300 Purchased Professional and Technical Services</b>				
340 Technical Services				35,271.50
<b>Total Purchased Professional and Technical Services</b>				<b>\$35,271.50</b>
<b>500 Other Purchased Services</b>				
530 Communications				468.16
<b>Total Other Purchased Services</b>				<b>\$468.16</b>
<b>800 Other Objects</b>				
810 Dues and Fees				787.35
<b>Total Other Objects</b>				<b>\$787.35</b>
<b>Total 2711 Supervision of Student Transportation Services – Head of Component</b>				<b>\$173,506.65</b>

General Fund (10)

2720 Vehicle Operation Services

Elementary

Secondary

Federal

Total

100 Personnel Services – Salaries

100 Personnel Services – Salaries

60,728.37

**Total Personnel Services – Salaries**

**\$60,728.37**

200 Personnel Services – Employee Benefits

210 Group Insurance – Contracted Provider

270.71

220 Social Security Contributions

4,672.43

230 PSERS Retirement Contributions

20,898.61

250 Unemployment Compensation

392.00

260 Workers' Compensation

232.84

**Total Personnel Services – Employee Benefits**

**\$26,466.59**

400 Purchased Property Services

440 Rentals

2,651.19

**Total Purchased Property Services**

**\$2,651.19**

500 Other Purchased Services

513 Contracted Carriers

2,214,289.37

516 Student Transportation Services From the IU

665,633.21

524 Other Pupil Transportation Insurance

29,076.01

**Total Other Purchased Services**

**\$2,908,998.59**

600 Supplies

610 General Supplies

856.51

620 Energy

172,401.66

**Total Supplies**

**\$173,258.17**

**Total 2720 Vehicle Operation Services**

**\$3,172,102.91**

General Fund (10)

2740 Vehicle Servicing and Maintenance Services

Elementary

Secondary

Federal

Total

100 Personnel Services – Salaries

100 Personnel Services – Salaries

77,480.00

**Total Personnel Services – Salaries**

**\$77,480.00**

200 Personnel Services – Employee Benefits

210 Group Insurance – Contracted Provider

(460.62)

220 Social Security Contributions

5,818.18

230 PSERS Retirement Contributions

26,567.84

270 Group Insurance – Self-Insurance

9,042.78

**Total Personnel Services – Employee Benefits**

**\$40,968.18**

**Total 2740 Vehicle Servicing and Maintenance Services**

**\$118,448.18**

LEA : 123468402 Upper Merion Area SD

Printed 11/17/2020 11:29:27 AM

General Fund (10)

2750 Nonpublic Transportation

Elementary

Secondary

Federal

Total

500 Other Purchased Services

513 Contracted Carriers

605,228.32

**Total Other Purchased Services**

**\$605,228.32**

**Total 2750 Nonpublic Transportation**

**\$605,228.32**

**General Fund (10)**

**2800 Support Services – Central**

Elementary                      Secondary                      Federal                      Total

<b>100</b>	<b><u>Personnel Services – Salaries</u></b>				
	100 Personnel Services – Salaries				696,102.73
<b>Total Personnel Services – Salaries</b>					<b>\$696,102.73</b>
<b>200</b>	<b><u>Personnel Services – Employee Benefits</u></b>				
	210 Group Insurance – Contracted Provider				7,110.79
	220 Social Security Contributions				49,713.31
	230 PSERS Retirement Contributions				236,952.21
	260 Workers' Compensation				1,711.97
	270 Group Insurance – Self-Insurance				154,047.25
	291 Other Retirement Plans				3,000.00
<b>Total Personnel Services – Employee Benefits</b>					<b>\$452,535.53</b>
<b>300</b>	<b><u>Purchased Professional and Technical Services</u></b>				
	340 Technical Services				308,747.34
	360 Employee Training and Development Services				22,891.11
<b>Total Purchased Professional and Technical Services</b>					<b>\$331,638.45</b>
<b>500</b>	<b><u>Other Purchased Services</u></b>				
	530 Communications				1,499.59
	580 Travel				2,826.57
<b>Total Other Purchased Services</b>					<b>\$4,326.16</b>
<b>600</b>	<b><u>Supplies</u></b>				
	610 General Supplies				156,380.66
	640 Books and Periodicals				4,230.00
	650 Supplies & Fees – Technology Related				15,097.50
<b>Total Supplies</b>					<b>\$175,708.16</b>
<b>700</b>	<b><u>Property</u></b>				
	752 Capital Equipment – Original and Additional				14,844.60
	758 Capitalized Technology Software - Original				19,714.70
<b>Total Property</b>					<b>\$34,559.30</b>
<b>Total 2800 Support Services – Central</b>					<b>\$1,694,870.33</b>

General Fund (10)

2830 Staff Services

Elementary

Secondary

Federal

Total

300 Purchased Professional and Technical Services

360 Employee Training and Development Services

22,891.11

**Total Purchased Professional and Technical Services**

**\$22,891.11**

**Total 2830 Staff Services**

**\$22,891.11**



General Fund (10)

2834 Staff Development Services – Non-Instructional, Certified Staff Only

Elementary

Secondary

Federal

Total

300 Purchased Professional and Technical Services

360 Employee Training and Development Services

20,876.11

**Total Purchased Professional and Technical Services**

**\$20,876.11**

**Total 2834 Staff Development Services – Non-Instructional, Certified Staff Only**

**\$20,876.11**

General Fund (10)

	<u>Elementary</u>	<u>Secondary</u>	<u>Federal</u>	<u>Total</u>
<b>2836 Staff Development Services – Non-Instructional, Non-Certified Staff Only</b>				
<b>300 <u>Purchased Professional and Technical Services</u></b>				
360 Employee Training and Development Services				2,015.00
<b>Total Purchased Professional and Technical Services</b>				<b>\$2,015.00</b>
<b>Total 2836 Staff Development Services – Non-Instructional, Non-Certified Staff Only</b>				<b>\$2,015.00</b>

General Fund (10)

2840 Data Processing Services

Elementary

Secondary

Federal

Total

100 Personnel Services – Salaries

100 Personnel Services – Salaries

694,722.10

**Total Personnel Services – Salaries**

**\$694,722.10**

200 Personnel Services – Employee Benefits

210 Group Insurance – Contracted Provider

7,110.79

220 Social Security Contributions

49,607.69

230 PSERS Retirement Contributions

236,490.67

260 Workers' Compensation

1,119.36

270 Group Insurance – Self-Insurance

154,047.25

291 Other Retirement Plans

3,000.00

**Total Personnel Services – Employee Benefits**

**\$451,375.76**

300 Purchased Professional and Technical Services

340 Technical Services

308,747.34

**Total Purchased Professional and Technical Services**

**\$308,747.34**

500 Other Purchased Services

530 Communications

1,499.59

580 Travel

2,826.57

**Total Other Purchased Services**

**\$4,326.16**

600 Supplies

610 General Supplies

140,603.30

640 Books and Periodicals

4,230.00

650 Supplies & Fees – Technology Related

15,097.50

**Total Supplies**

**\$159,930.80**

700 Property

752 Capital Equipment – Original and Additional

14,844.60

758 Capitalized Technology Software - Original

19,714.70

**Total Property**

**\$34,559.30**

**Total 2840 Data Processing Services**

**\$1,653,661.46**

General Fund (10)

2860 Management Services

Elementary

Secondary

Federal

Total

100 Personnel Services – Salaries

100 Personnel Services – Salaries

1,380.63

**Total Personnel Services – Salaries**

**\$1,380.63**

200 Personnel Services – Employee Benefits

220 Social Security Contributions

105.62

230 PSERS Retirement Contributions

461.54

260 Workers' Compensation

592.61

**Total Personnel Services – Employee Benefits**

**\$1,159.77**

600 Supplies

610 General Supplies

15,777.36

**Total Supplies**

**\$15,777.36**

**Total 2860 Management Services**

**\$18,317.76**

LEA : 123468402 Upper Merion Area SD

Printed 11/17/2020 11:29:27 AM

General Fund (10)

2900 Other Support Services

Elementary

Secondary

Federal

Total

500 Other Purchased Services

595 IU Payments By Withholding

67,375.69

Total Other Purchased Services

\$67,375.69

Total 2900 Other Support Services

\$67,375.69

General Fund (10)

2910 Support Services Not Listed Elsewhere In the 2000 Series

Elementary

Secondary

Federal

Total

500 Other Purchased Services

595 IU Payments By Withholding

67,375.69

**Total Other Purchased Services**

**\$67,375.69**

**Total 2910 Support Services Not Listed Elsewhere In the 2000 Series**

**\$67,375.69**

**General Fund (10)**

**3000 Operation of Non-Instructional Services**

**Total**

**100 Personnel Services – Salaries**

100 Personnel Services – Salaries 1,120,492.68

**Total Personnel Services – Salaries \$1,120,492.68**

**200 Personnel Services – Employee Benefits**

210 Group Insurance – Contracted Provider 3,233.61

220 Social Security Contributions 85,011.55

230 PSERS Retirement Contributions 370,785.77

270 Group Insurance – Self-Insurance 58,484.72

291 Other Retirement Plans 1,500.00

**Total Personnel Services – Employee Benefits \$519,015.65**

**400 Purchased Property Services**

410 Cleaning Services 27,544.49

430 Repairs and Maintenance Services 2,200.59

**Total Purchased Property Services \$29,745.08**

**500 Other Purchased Services**

530 Communications 448.00

580 Travel 6,809.55

591 Services Purchased Locally 82,675.58

**Total Other Purchased Services \$89,933.13**

**600 Supplies**

610 General Supplies 125,405.05

**Total Supplies \$125,405.05**

**700 Property**

752 Capital Equipment – Original and Additional 32,816.87

762 Capitalized Equipment - Replacement 5,968.65

**Total Property \$38,785.52**

**800 Other Objects**

810 Dues and Fees 9,242.90

890 Miscellaneous Expenditures 70,541.37

**Total Other Objects \$79,784.27**

**Total 3000 Operation of Non-Instructional Services \$2,003,161.38**





LEA : 123468402 Upper Merion Area SD

Printed 11/17/2020 11:29:43 AM

General Fund (10)

3300 Community Services

Elementary

Secondary

Federal

Total

500 Other Purchased Services

591 Services Purchased Locally

82,675.58

**Total Other Purchased Services**

**\$82,675.58**

**Total 3300 Community Services**

**\$82,675.58**

**General Fund (10)**

**5000 Other Expenditures and Financing Uses**

**Total**

**800 Other Objects**

830 Interest	3,670,357.72
880 Refunds of Prior Years' Receipts	290,665.39

<b>Total Other Objects</b>	<b>\$3,961,023.11</b>
----------------------------	-----------------------

**900 Other Uses of Funds**

910 Redemption of Principal	3,887,777.07
932 Capital Reserve Fund Transfers Applicable To Fund 32	8,000,000.00
939 Other Fund Transfers	10,319.10

<b>Total Other Uses of Funds</b>	<b>\$11,898,096.17</b>
----------------------------------	------------------------

<b>Total 5000 Other Expenditures and Financing Uses</b>	<b>\$15,859,119.28</b>
---	------------------------

General Fund (10)

5100 Debt Service / Other Expenditures and Financing Uses	<u>Elementary</u>	<u>Secondary</u>	<u>Federal</u>	<u>Total</u>
<b>800 Other Objects</b>				
830 Interest				3,670,357.72
880 Refunds of Prior Years' Receipts				290,665.39
<b>Total Other Objects</b>				<b>\$3,961,023.11</b>
<b>900 Other Uses of Funds</b>				
910 Redemption of Principal				3,887,777.07
<b>Total Other Uses of Funds</b>				<b>\$3,887,777.07</b>
<b>Total 5100 Debt Service / Other Expenditures and Financing Uses</b>				<b>\$7,848,800.18</b>

LEA : 123468402 Upper Merion Area SD

Printed 11/17/2020 11:30:02 AM

General Fund (10)

	<u>Elementary</u>	<u>Secondary</u>	<u>Federal</u>	<u>Total</u>
<b>5110 Debt Service</b>				
<b>800 Other Objects</b>				
830 Interest				3,670,357.72
<b>Total Other Objects</b>				<b>\$3,670,357.72</b>
<b>900 Other Uses of Funds</b>				
910 Redemption of Principal				3,887,777.07
<b>Total Other Uses of Funds</b>				<b>\$3,887,777.07</b>
<b>Total 5110 Debt Service</b>				<b>\$7,558,134.79</b>

LEA : 123468402 Upper Merion Area SD

Printed 11/17/2020 11:30:02 AM

General Fund (10)

5130 Refund of Prior Year Revenues / Receipts

Elementary

Secondary

Federal

Total

800 Other Objects

880 Refunds of Prior Years' Receipts

290,665.39

**Total Other Objects**

**\$290,665.39**

**Total 5130 Refund of Prior Year Revenues / Receipts**

**\$290,665.39**

LEA : 123468402 Upper Merion Area SD

Printed 11/17/2020 11:30:02 AM

General Fund (10)

5200 Interfund Transfers – Out

Elementary

Secondary

Federal

Total

900 Other Uses of Funds

932 Capital Reserve Fund Transfers Applicable To Fund 32

8,000,000.00

939 Other Fund Transfers

10,319.10

**Total Other Uses of Funds**

**\$8,010,319.10**

**Total 5200 Interfund Transfers – Out**

**\$8,010,319.10**

LEA : 123468402 Upper Merion Area SD

Printed 11/17/2020 11:30:02 AM

General Fund (10)

5230 Capital Projects Fund Transfers

Elementary

Secondary

Federal

Total

900 Other Uses of Funds

932 Capital Reserve Fund Transfers Applicable To Fund 32

8,000,000.00

**Total Other Uses of Funds**

**\$8,000,000.00**

**Total 5230 Capital Projects Fund Transfers**

**\$8,000,000.00**

LEA : 123468402 Upper Merion Area SD

Printed 11/17/2020 11:30:02 AM

General Fund (10)

5250 Enterprise Fund Transfers

Elementary

Secondary

Federal

Total

900 Other Uses of Funds

939 Other Fund Transfers

10,319.10

**Total Other Uses of Funds**

**\$10,319.10**

**Total 5250 Enterprise Fund Transfers**

**\$10,319.10**



LEA : 123468402 Upper Merion Area SD

Printed 11/17/2020 11:29:34 AM

Capital Reserve Fund - § 1431 (32)

2000 Support Services

Total

300 Purchased Professional and Technical Services

330 Other Professional Services 66,152.23

**Total Purchased Professional and Technical Services**

**\$66,152.23**

400 Purchased Property Services

430 Repairs and Maintenance Services 566,131.93

**Total Purchased Property Services**

**\$566,131.93**

700 Property

752 Capital Equipment – Original and Additional 412,833.77

762 Capitalized Equipment - Replacement 163,145.95

766 Capitalized Technology Equipment – Replacement 1,809,411.40

**Total Property**

**\$2,385,391.12**

800 Other Objects

810 Dues and Fees 8,391.00

**Total Other Objects**

**\$8,391.00**

**Total 2000 Support Services**

**\$3,026,066.28**

LEA : 123468402 Upper Merion Area SD

Printed 11/17/2020 11:29:34 AM

Capital Reserve Fund - § 1431 (32)

2200 Support Services – Instructional Staff

	<u>Elementary</u>	<u>Secondary</u>	<u>Federal</u>	<u>Total</u>
<b>700 Property</b>				
766 Capitalized Technology Equipment– Replacement	1,722,554.68	86,856.72		1,809,411.40
<b>Total Property</b>	<b>\$1,722,554.68</b>	<b>\$86,856.72</b>		<b>\$1,809,411.40</b>
<b>800 Other Objects</b>				
810 Dues and Fees	4,177.50	4,177.50		8,355.00
<b>Total Other Objects</b>	<b>\$4,177.50</b>	<b>\$4,177.50</b>		<b>\$8,355.00</b>
<b>Total 2200 Support Services – Instructional Staff</b>	<b>\$1,726,732.18</b>	<b>\$91,034.22</b>		<b>\$1,817,766.40</b>

LEA : 123468402 Upper Merion Area SD

Printed 11/17/2020 11:29:34 AM

Capital Reserve Fund - § 1431 (32)

2220 Technology Support Services

	<u>Elementary</u>	<u>Secondary</u>	<u>Federal</u>	<u>Total</u>
<b>700 Property</b>				
766 Capitalized Technology Equipment – Replacement	1,722,554.68	86,856.72		1,809,411.40
<b>Total Property</b>	<b>\$1,722,554.68</b>	<b>\$86,856.72</b>		<b>\$1,809,411.40</b>
<b>800 Other Objects</b>				
810 Dues and Fees	4,177.50	4,177.50		8,355.00
<b>Total Other Objects</b>	<b>\$4,177.50</b>	<b>\$4,177.50</b>		<b>\$8,355.00</b>
<b>Total 2220 Technology Support Services</b>	<b>\$1,726,732.18</b>	<b>\$91,034.22</b>		<b>\$1,817,766.40</b>

LEA : 123468402 Upper Merion Area SD

Printed 11/17/2020 11:29:34 AM

Capital Reserve Fund - § 1431 (32)

2500 Support Services – Business

Elementary

Secondary

Federal

Total

700 Property

752 Capital Equipment – Original and Additional

9,985.20

**Total Property**

**\$9,985.20**

800 Other Objects

810 Dues and Fees

36.00

**Total Other Objects**

**\$36.00**

**Total 2500 Support Services – Business**

**\$10,021.20**

LEA : 123468402 Upper Merion Area SD

Printed 11/17/2020 11:29:34 AM

Capital Reserve Fund - § 1431 (32)

2510 Fiscal Services

Elementary

Secondary

Federal

Total

700 Property

752 Capital Equipment – Original and Additional

9,985.20

**Total Property**

**\$9,985.20**

800 Other Objects

810 Dues and Fees

36.00

**Total Other Objects**

**\$36.00**

**Total 2510 Fiscal Services**

**\$10,021.20**

LEA : 123468402 Upper Merion Area SD

Printed 11/17/2020 11:29:34 AM

Capital Reserve Fund - § 1431 (32)

2515 Financial Accounting Services

Elementary

Secondary

Federal

Total

700 Property

752 Capital Equipment – Original and Additional

9,985.20

**Total Property**

**\$9,985.20**

800 Other Objects

810 Dues and Fees

36.00

**Total Other Objects**

**\$36.00**

**Total 2515 Financial Accounting Services**

**\$10,021.20**

LEA : 123468402 Upper Merion Area SD

Printed 11/17/2020 11:29:34 AM

Capital Reserve Fund - § 1431 (32)

2600 Operation and Maintenance of Plant Services

Elementary

Secondary

Federal

Total

300 Purchased Professional and Technical Services

330 Other Professional Services

66,152.23

**Total Purchased Professional and Technical Services**

**\$66,152.23**

400 Purchased Property Services

430 Repairs and Maintenance Services

566,131.93

**Total Purchased Property Services**

**\$566,131.93**

700 Property

752 Capital Equipment – Original and Additional

402,848.57

762 Capitalized Equipment - Replacement

163,145.95

**Total Property**

**\$565,994.52**

**Total 2600 Operation and Maintenance of Plant Services**

**\$1,198,278.68**

LEA : 123468402 Upper Merion Area SD

Printed 11/17/2020 11:29:34 AM

Capital Reserve Fund - § 1431 (32)

2610 Supervision of Operation and Maintenance of Plant Services

Elementary

Secondary

Federal

Total

400 Purchased Property Services

430 Repairs and Maintenance Services

503,020.83

**Total Purchased Property Services**

**\$503,020.83**

**Total 2610 Supervision of Operation and Maintenance of Plant Services**

**\$503,020.83**



LEA : 123468402 Upper Merion Area SD

Printed 11/17/2020 11:29:34 AM

Capital Reserve Fund - § 1431 (32)

2619 Supervision of Operation and Maintenance of Plant Services – All Other Supervision

Elementary

Secondary

Federal

Total

400 Purchased Property Services

430 Repairs and Maintenance Services

503,020.83

**Total Purchased Property Services**

**\$503,020.83**

**Total 2619 Supervision of Operation and Maintenance of Plant Services – All Other Supervision**

**\$503,020.83**

Capital Reserve Fund - § 1431 (32)

	<u>Elementary</u>	<u>Secondary</u>	<u>Federal</u>	<u>Total</u>
<b>2620 Operation of Buildings Services</b>				
<b>300 <u>Purchased Professional and Technical Services</u></b>				
330 Other Professional Services				66,152.23
<b>Total Purchased Professional and Technical Services</b>				<b>\$66,152.23</b>
<b>400 <u>Purchased Property Services</u></b>				
430 Repairs and Maintenance Services				59,496.10
<b>Total Purchased Property Services</b>				<b>\$59,496.10</b>
<b>700 <u>Property</u></b>				
752 Capital Equipment – Original and Additional				391,849.48
762 Capitalized Equipment - Replacement				163,145.95
<b>Total Property</b>				<b>\$554,995.43</b>
<b>Total 2620 Operation of Buildings Services</b>				<b>\$680,643.76</b>

LEA : 123468402 Upper Merion Area SD

Printed 11/17/2020 11:29:34 AM

Capital Reserve Fund - § 1431 (32)

2630 Care and Upkeep of Grounds Services

Elementary

Secondary

Federal

Total

400 Purchased Property Services

430 Repairs and Maintenance Services

3,615.00

**Total Purchased Property Services**

**\$3,615.00**

700 Property

752 Capital Equipment – Original and Additional

10,999.09

**Total Property**

**\$10,999.09**

**Total 2630 Care and Upkeep of Grounds Services**

**\$14,614.09**

LEA : 123468402 Upper Merion Area SD

Printed 11/17/2020 11:29:45 AM

**Capital Reserve Fund - § 1431 (32)**

**3000 Operation of Non-Instructional Services**

**Total**

**700 Property**

752 Capital Equipment – Original and Additional

38,335.00

**Total Property**

**\$38,335.00**

**Total 3000 Operation of Non-Instructional Services**

**\$38,335.00**

LEA : 123468402 Upper Merion Area SD

Printed 11/17/2020 11:29:45 AM

Capital Reserve Fund - § 1431 (32)

3200 Student Activities

Elementary

Secondary

Federal

Total

700 Property

752 Capital Equipment – Original and Additional

38,335.00

**Total Property**

**\$38,335.00**

**Total 3200 Student Activities**

**\$38,335.00**

LEA : 123468402 Upper Merion Area SD

Printed 11/17/2020 11:29:51 AM

Capital Reserve Fund - § 1431 (32)

4000 Facilities Acquisition, Construction and Improvement Services

Total

700 Property

752 Capital Equipment – Original and Additional

28,802.00

**Total Property**

**\$28,802.00**

**Total 4000 Facilities Acquisition, Construction and Improvement Services**

**\$28,802.00**

LEA : 123468402 Upper Merion Area SD

Printed 11/17/2020 11:29:51 AM

Capital Reserve Fund - § 1431 (32)

4200 Existing Site Improvement Services

Elementary

Secondary

Federal

Total

700 Property

752 Capital Equipment – Original and Additional

19,302.00

<b>Total Property</b>				<b>\$19,302.00</b>
<b>Total 4200 Existing Site Improvement Services</b>				<b>\$19,302.00</b>

LEA : 123468402 Upper Merion Area SD

Printed 11/17/2020 11:29:51 AM

Capital Reserve Fund - § 1431 (32)

4500 Building Acquisition and Construction Services – Original and Additional

Elementary

Secondary

Federal

Total

700 Property

752 Capital Equipment – Original and Additional

9,500.00

<b>Total Property</b>				<b>\$9,500.00</b>
<b>Total 4500 Building Acquisition and Construction Services – Original and Additional</b>				<b>\$9,500.00</b>



LEA : 123468402 Upper Merion Area SD

Printed 11/17/2020 11:29:36 AM

**Other Capital Projects Fund (39)**

**2000 Support Services**

**800 Other Objects**

810 Dues and Fees

**Total Other Objects**

**Total 2000 Support Services**

Total

465.42

**\$465.42**

**\$465.42**

LEA : 123468402 Upper Merion Area SD

Printed 11/17/2020 11:29:36 AM

Other Capital Projects Fund (39)

2500 Support Services – Business

Elementary

Secondary

Federal

Total

800 Other Objects

810 Dues and Fees

465.42

**Total Other Objects**

**\$465.42**

**Total 2500 Support Services – Business**

**\$465.42**

LEA : 123468402 Upper Merion Area SD

Printed 11/17/2020 11:29:36 AM

Other Capital Projects Fund (39)

	<u>Elementary</u>	<u>Secondary</u>	<u>Federal</u>	<u>Total</u>
2510 Fiscal Services				
800 <u>Other Objects</u>				
810 Dues and Fees				465.42
<b>Total Other Objects</b>				<b>\$465.42</b>
<b>Total 2510 Fiscal Services</b>				<b>\$465.42</b>

LEA : 123468402 Upper Merion Area SD

Printed 11/17/2020 11:29:36 AM

Other Capital Projects Fund (39)

2515 Financial Accounting Services

Elementary

Secondary

Federal

Total

800 Other Objects

810 Dues and Fees

465.42

**Total Other Objects**

**\$465.42**

**Total 2515 Financial Accounting Services**

**\$465.42**

**Other Capital Projects Fund (39)**

**4000 Facilities Acquisition, Construction and Improvement Services**

**Total**

**300 Purchased Professional and Technical Services**

330 Other Professional Services 3,060,248.49

**Total Purchased Professional and Technical Services \$3,060,248.49**

**400 Purchased Property Services**

450 Construction Services 129,324.49

**Total Purchased Property Services \$129,324.49**

**700 Property**

710 Land and Improvements 8,260.00

**Total Property \$8,260.00**

**Total 4000 Facilities Acquisition, Construction and Improvement Services \$3,197,832.98**

LEA : 123468402 Upper Merion Area SD

Printed 11/17/2020 11:29:54 AM

Other Capital Projects Fund (39)

4200 Existing Site Improvement Services

Elementary

Secondary

Federal

Total

700 Property

710 Land and Improvements

8,260.00

**Total Property**

**\$8,260.00**

**Total 4200 Existing Site Improvement Services**

**\$8,260.00**

LEA : 123468402 Upper Merion Area SD

Printed 11/17/2020 11:29:54 AM

Other Capital Projects Fund (39)

4300 Architecture and Engineering Services / Educational Specifications Development – Original and Additional

Elementary

Secondary

Federal

Total

300 Purchased Professional and Technical Services

330 Other Professional Services

3,060,248.49

**Total Purchased Professional and Technical Services**

**\$3,060,248.49**

**Total 4300 Architecture and Engineering Services / Educational Specifications Development – Original and Additional**

**\$3,060,248.49**

LEA : 123468402 Upper Merion Area SD

Printed 11/17/2020 11:29:54 AM

Other Capital Projects Fund (39)

4500 Building Acquisition and Construction Services – Original and Additional

Elementary

Secondary

Federal

Total

400 Purchased Property Services

450 Construction Services

129,324.49

**Total Purchased Property Services**

**\$129,324.49**

**Total 4500 Building Acquisition and Construction Services – Original and Additional**

**\$129,324.49**



	<u>General Fund(10)</u>	<u>Student Sponsored Activity Fund(21)</u>	<u>Public Purpose Trust(27)</u>	<u>Other Compt Approved (28)</u>	<u>Athletic / Activity(29)</u>
<b>1000 Instruction</b>					
1100 Regular Programs - Elementary / Secondary	42,583,399.07				
1200 Special Programs - Elementary / Secondary	15,926,026.50				
1300 Vocational Education	2,859,840.36				
1400 Other Instructional Programs - Elementary / Secondary	147,943.93				
1500 Nonpublic School Programs	12,173.00				
<b>Total Instruction</b>	<b>\$61,529,382.86</b>				
<b>2000 Support Services</b>					
2100 Support Services - Students	5,046,207.16				
2200 Support Services - Instructional Staff	3,816,447.57				
2300 Support Services - Administration	5,160,871.12				
2400 Support Services - Pupil Health	1,330,284.80				
2500 Support Services - Business	1,006,251.83				
2600 Operation and Maintenance of Plant Services	8,903,360.21				
2700 Student Transportation Services	4,069,286.06				
2800 Support Services - Central	1,694,870.33				
2900 Other Support Services	67,375.69				
<b>Total Support Services</b>	<b>\$31,094,954.77</b>				
<b>3000 Operation of Non-Instructional Services</b>					
3200 Student Activities	1,920,485.80				
3300 Community Services	82,675.58				
<b>Total Operation of Non-Instructional Services</b>	<b>\$2,003,161.38</b>				
<b>4000 Facilities Acquisition, Construction and Improvement Services</b>					
4200 Existing Site Improvement Services					
4300 Architecture and Engineering Services / Educational Specifications Development - Original and Additional					
4500 Building Acquisition and Construction Services - Original and Additional					
<b>Total Facilities Acquisition, Construction and Improvement Services</b>					
<b>5000 Other Expenditures and Financing Uses</b>					
5100 Debt Service / Other Expenditures and Financing Uses	7,848,800.18				
5200 Interfund Transfers - Out	8,010,319.10				
<b>Total Other Expenditures and Financing Uses</b>	<b>\$15,859,119.28</b>				
<b>TOTAL ACTUAL EXPENDITURES &amp; OTHER FINANCING USES</b>	<b>\$110,486,618.29</b>				

	<u>Capital Reserve (690.1850)(31)</u>	<u>Capital Reserve (1431)(32)</u>	<u>Other Capital Projects Fund(39)</u>	<u>Debt Service(40)</u>	<u>Permanent(90)</u>
<b>1000 Instruction</b>					
1100 Regular Programs - Elementary / Secondary					
1200 Special Programs - Elementary / Secondary					
1300 Vocational Education					
1400 Other Instructional Programs - Elementary / Secondary					
1500 Nonpublic School Programs					
<b>Total Instruction</b>					
<b>2000 Support Services</b>					
2100 Support Services - Students					
2200 Support Services - Instructional Staff		1,817,766.40			
2300 Support Services - Administration					
2400 Support Services - Pupil Health					
2500 Support Services - Business		10,021.20	465.42		
2600 Operation and Maintenance of Plant Services		1,198,278.68			
2700 Student Transportation Services					
2800 Support Services - Central					
2900 Other Support Services					
<b>Total Support Services</b>		<b>\$3,026,066.28</b>	<b>\$465.42</b>		
<b>3000 Operation of Non-Instructional Services</b>					
3200 Student Activities		38,335.00			
3300 Community Services					
<b>Total Operation of Non-Instructional Services</b>		<b>\$38,335.00</b>			
<b>4000 Facilities Acquisition, Construction and Improvement Services</b>					
4200 Existing Site Improvement Services		19,302.00	8,260.00		
4300 Architecture and Engineering Services / Educational Specifications Development - Original and Additional			3,060,248.49		
4500 Building Acquisition and Construction Services - Original and Additional		9,500.00	129,324.49		
<b>Total Facilities Acquisition, Construction and Improvement Services</b>		<b>\$28,802.00</b>	<b>\$3,197,832.98</b>		
<b>5000 Other Expenditures and Financing Uses</b>					
5100 Debt Service / Other Expenditures and Financing Uses					
5200 Interfund Transfers - Out					
<b>Total Other Expenditures and Financing Uses</b>					
<b>TOTAL ACTUAL EXPENDITURES &amp; OTHER FINANCING USES</b>		<b>\$3,093,203.28</b>	<b>\$3,198,298.40</b>		

**Total**

<b>1000 Instruction</b>	
1100 Regular Programs - Elementary / Secondary	42,583,399.07
1200 Special Programs - Elementary / Secondary	15,926,026.50
1300 Vocational Education	2,859,840.36
1400 Other Instructional Programs - Elementary / Secondary	147,943.93
1500 Nonpublic School Programs	12,173.00
<b>Total Instruction</b>	<b>\$61,529,382.86</b>
<b>2000 Support Services</b>	
2100 Support Services - Students	5,046,207.16
2200 Support Services - Instructional Staff	5,634,213.97
2300 Support Services - Administration	5,160,871.12
2400 Support Services - Pupil Health	1,330,284.80
2500 Support Services - Business	1,016,738.45
2600 Operation and Maintenance of Plant Services	10,101,638.89
2700 Student Transportation Services	4,069,286.06
2800 Support Services - Central	1,694,870.33
2900 Other Support Services	67,375.69
<b>Total Support Services</b>	<b>\$34,121,486.47</b>
<b>3000 Operation of Non-Instructional Services</b>	
3200 Student Activities	1,958,820.80
3300 Community Services	82,675.58
<b>Total Operation of Non-Instructional Services</b>	<b>\$2,041,496.38</b>
<b>4000 Facilities Acquisition, Construction and Improvement Services</b>	
4200 Existing Site Improvement Services	27,562.00
4300 Architecture and Engineering Services / Educational Specifications Development - Original and Additional	3,060,248.49
4500 Building Acquisition and Construction Services - Original and Additional	138,824.49
<b>Total Facilities Acquisition, Construction and Improvement Services</b>	<b>\$3,226,634.98</b>
<b>5000 Other Expenditures and Financing Uses</b>	
5100 Debt Service / Other Expenditures and Financing Uses	7,848,800.18
5200 Interfund Transfers - Out	8,010,319.10
<b>Total Other Expenditures and Financing Uses</b>	<b>\$15,859,119.28</b>
<b>TOTAL ACTUAL EXPENDITURES &amp; OTHER FINANCING USES</b>	<b>\$116,778,119.97</b>

LEA : 123468402 Upper Merion Area SD

Printed 11/17/2020 11:30:46 AM

**PSERS Salary Data (Salary Data should relate to the General Fund only)**

<b>Amount Description</b>	<b>Amount</b>
Total Salary Base for salaries subject to PSERS withholding	48,754,600.23
Total Federally Funded salaries subject to PSERS withholding	396,092.09
	<hr/>

**Title I Expenditure Data**

<b>Amount Description</b>	<b>Amount</b>
Expenditures Funded with Current Title I Funds	412,715.00
Expenditures Funded with Carry over Title I Funds	
<b>Total Title I Expenditure Data</b>	<hr/> <b>\$412,715.00</b> <hr/>

**Benefits for Staff Relative to Collective Bargaining Agreements**

	<b>OBJECT</b>	<b>COVERED</b>	<b>NOT COVERED</b>	<b>TOTAL</b>
<b>10 General Fund</b>				
	211 Medical Insurance			
	212 Dental Insurance			
	215 Eye Care Insurance			
	216 Prescription Insurance			
	271 Self-Insurance Medical Benefits	5,183,151.61	1,859,173.95	7,042,325.56
	272 Self-Insurance Dental Benefits	209,172.75	75,029.36	284,202.11
	275 Self-Insurance Eye Care Benefits			
	276 Self-Insurance Prescription Benefits			
	<b>FUND TOTAL</b>	<b>\$5,392,324.36</b>	<b>\$1,934,203.31</b>	<b>\$7,326,527.67</b>
<b>50 Enterprise Fund</b>				
	211 Medical Insurance			
	212 Dental Insurance			
	215 Eye Care Insurance			
	216 Prescription Insurance			
	271 Self-Insurance Medical Benefits	185,763.30	27,524.52	213,287.82
	272 Self-Insurance Dental Benefits	8,787.36	1,292.04	10,079.40
	275 Self-Insurance Eye Care Benefits			
	276 Self-Insurance Prescription Benefits			
	<b>FUND TOTAL</b>	<b>\$194,550.66</b>	<b>\$28,816.56</b>	<b>\$223,367.22</b>
<b>60 Internal Service Fund</b>	<b>No Self Insurance data to report</b>			
	211 Medical Insurance			
	212 Dental Insurance			
	215 Eye Care Insurance			
	216 Prescription Insurance			
	271 Self-Insurance Medical Benefits			
	272 Self-Insurance Dental Benefits			
	275 Self-Insurance Eye Care Benefits			
	276 Self-Insurance Prescription Benefits			
		<b>FUND TOTAL</b>		
<b>Total of All Funds</b>		<b>\$5,586,875.02</b>	<b>\$1,963,019.87</b>	<b>\$7,549,894.89</b>

LEA : 123468402 Upper Merion Area SD

Printed 11/17/2020 11:30:55 AM

Function	Special Education (Prior Year)	Nonspecial Education (Prior Year)	Total (Prior Year)	Special Education (Current Year)	Nonspecial Education (Current Year)	Total (Current Year)
2120 Guidance Services	379,159.75	2,148,571.92	2,527,731.67	389,716.92	2,208,395.85	2,598,112.77
2140 Psychological Services	99,771.49	565,371.78	665,143.27	104,433.47	591,789.68	696,223.15
2150 Speech Pathology and Audiology Services						
2160 Social Work Services	36,631.09	79,966.06	116,597.15	39,484.00	83,903.51	123,387.51
2260 Instruction and Curriculum Development Services	263,381.22	1,492,493.58	1,755,874.80	283,940.18	1,608,994.35	1,892,934.53
2350 Legal and Accounting Services	53,855.08	1,554,985.77	1,608,840.85	69,950.55	431,646.44	501,596.99
2420 Medical Services	168,700.72	955,970.77	1,124,671.49	170,511.51	966,231.91	1,136,743.42
2440 Nursing Services						
2700 Student Transportation Services	907,296.62	5,141,347.52	6,048,644.14	610,392.91	3,458,893.15	4,069,286.06
<b>Total</b>	<b>\$1,908,795.97</b>	<b>\$11,938,707.40</b>	<b>\$13,847,503.37</b>	<b>\$1,668,429.54</b>	<b>\$9,349,854.89</b>	<b>\$11,018,284.43</b>

(PRINCIPAL AMOUNTS ONLY)

**GOVERNMENTAL FUNDS/ ACTIVITIES**

	Short-Term Borrowing	General Obligation Bonds/Notes	Authority Building Obligations	Other Long-Term Debt	Other Post-Employment Benefits (OPEB)	Compensated Absences	Net Pension Liability	Total
1. Debt at Beginning of Fiscal Year		90,860,000.00		10,243,600.00	8,790,895.00	4,610,138.00	150,961,000.00	265,465,633.00
2. Additional Debt Incurred During Year					683,661.00	1,245,064.00	6,001,000.00	7,929,725.00
3. Retirements and Repayments		3,320,000.00		603,663.00				3,923,663.00
4. Debt at End of Fiscal Year		87,540,000.00		9,639,937.00	9,474,556.00	5,855,202.00	156,962,000.00	269,471,695.00
5. Accreted Interest at End Of Fiscal Year								
6. Total Debt and Accreted Interest		87,540,000.00		9,639,937.00	9,474,556.00	5,855,202.00	156,962,000.00	269,471,695.00
7. Current Portion P&I - Due within 1 year		3,475,000.00		603,663.00		585,520.00		4,664,183.00
8. Interest Paid during current fiscal year		3,670,357.72						3,670,357.72

(PRINCIPAL AMOUNTS ONLY)

**PROPRIETARY FUNDS**

	Short-Term Borrowing	General Obligation Bonds/Notes	Authority Building Obligations	Other Long-Term Debt	Other Post-Employment Benefits (OPEB)	Compensated Absences	Net Pension Liability	Total
1. Debt at Beginning of Fiscal Year					226,749.00	67,626.00	3,903,000.00	4,197,375.00
2. Additional Debt Incurred During Year					6,992.00		54,000.00	60,992.00
3. Retirements and Repayments					110,677.00	37,020.00	1,905,000.00	2,052,697.00
4. Debt at End of Fiscal Year					123,064.00	30,606.00	2,052,000.00	2,205,670.00
5. Accreted Interest at End Of Fiscal Year								
6. Total Debt and Accreted Interest					123,064.00	30,606.00	2,052,000.00	2,205,670.00
7. Current Portion P&I - Due within 1 year						3,061.00		3,061.00
8. Interest Paid during current fiscal year								

**Total Principal and Interest Payments Made by Your School - All Funds**

Function	Fund		Principal (910)	Principal (920)	Interest (830)	Total (Principal +Interest)	Misc Other Uses (990)
5110	10	General Fund	3,887,777.07		3,670,357.72	7,558,134.79	
5110	20	Special Revenue Funds					
5110	30	Capital Projects Funds					
5110	40	Debt Service Fund					
5110	90	Permanent Fund					
5120	10	General Fund					
5120	20	Special Revenue Funds					
5120	30	Capital Projects Funds					
5120	40	Debt Service Fund					

<b>Total Debt Payments - Governmental Funds</b>			<b>\$3,887,777.07</b>		<b>\$3,670,357.72</b>	<b>\$7,558,134.79</b>	
---	--	--	-----------------------	--	-----------------------	-----------------------	--

Function	Fund		Principal (910)	Principal (920)	Interest (830)	Total (Principal +Interest)
5110	50	Enterprise Fund				
5110	60	Internal Service Fund				
5120	50	Enterprise Fund				
5120	60	Internal Service Fund				

<b>Total Debt Payments - Proprietary Funds</b>						
--	--	--	--	--	--	--



LEA : 123468402 Upper Merion Area SD

Printed 11/17/2020 11:31:03 AM

**Debt Details**  
**Governmental Funds/ Activities**

Debt Category	Debt Issue Date (MM/YYYY)	Principal Amounts Only			Debt at End of Fiscal Year	Current Portion Due Within One Year (Principal and Interest)	Interest Paid During Fiscal Year
		Debt at Beginning of Fiscal Year	Additions	Reductions / Repayments			
General Obligation Bonds/Notes – CIB	03/2019	9,995,000.00			9,995,000.00	5,000.00	282,556.46
General Obligation Bonds/Notes – CIB	10/2017	28,910,000.00		5,000.00	28,905,000.00	5,000.00	1,395,500.00
General Obligation Bonds/Notes – CIB	10/2016	35,690,000.00		505,000.00	35,185,000.00	590,000.00	1,628,575.00
General Obligation Bonds/Notes – CIB	02/2014	5,580,000.00		1,355,000.00	4,225,000.00	1,380,000.00	126,888.76
General Obligation Bonds/Notes – CIB	05/2013	4,665,000.00		1,050,000.00	3,615,000.00	350,000.00	105,245.00
General Obligation Bonds/Notes – CIB	09/2012	6,020,000.00		405,000.00	5,615,000.00	1,145,000.00	131,592.50
Other Long Term Debt/Liabilities		10,243,600.00		603,663.00	9,639,937.00	603,663.00	
Compensated Absences		4,610,138.00	1,245,064.00		5,855,202.00	585,520.00	
Other Post-Employment Benefits (OPEB)		8,790,895.00	683,661.00		9,474,556.00		
Net Pension Liability		150,961,000.00	6,001,000.00		156,962,000.00		
<b>Totals for Debt Entered:</b>		<b>\$265,465,633.00</b>	<b>\$7,929,725.00</b>	<b>\$3,923,663.00</b>	<b>\$269,471,695.00</b>	<b>\$4,664,183.00</b>	<b>\$3,670,357.72</b>

**Bond Details**  
**Proprietary Funds**

Debt Category	Debt Issue Date (MM/YYYY)	Principal Amounts Only			Debt at End of Fiscal Year	Current Portion Due Within One Year (Principal and Interest)	Interest Paid During Fiscal Year
		Debt at Beginning of Fiscal Year	Additions	Reductions / Repayments			
Compensated Absences		67,626.00		37,020.00	30,606.00	3,061.00	
Other Post-Employment Benefits (OPEB)		226,749.00	6,992.00	110,677.00	123,064.00		
Net Pension Liability		3,903,000.00	54,000.00	1,905,000.00	2,052,000.00		
<b>Totals for Debt Entered:</b>		<b>\$4,197,375.00</b>	<b>\$60,992.00</b>	<b>\$2,052,697.00</b>	<b>\$2,205,670.00</b>	<b>\$3,061.00</b>	

LEA : 123468402 Upper Merion Area SD

Printed 11/17/2020 11:31:07 AM

**General Fund (10)**

**Section 1: Tuition/Purchased Services as Reported within Expenditure Detail**

	Amount
Tuition Reported in General Fund Expenditures 1000-560	5,467,300.37
Purchased Services in General Fund Expenditures 1000-594 and 1000-597	630.51
<b>Section 1 Total</b>	<b>\$5,467,930.88</b>

**Section 2: Tuition Paid to Institution Types During Fiscal Year**

	Tuition Paid For Nonspecial Education	Tuition Paid For Special Education	Total
1 1306 Institutions			
2 Institutionalized Children's Programs			
3 Juveniles Incarcerated in Adult Facilities			
4 Residential Treatment Facilities			
5 Other Local Education Agencies	161,149.00	6,294.11	167,443.11
6 Brick and Mortar Charter Schools	102,664.32		102,664.32
7 Cyber Charter Schools	844,270.20	197,659.86	1,041,930.06
8 Career and Technology Centers	1,956,041.76		1,956,041.76
9 Approved Private Schools		1,201,680.21	1,201,680.21
10 PA Chartered Schools for the Deaf and Blind			
11 Private Residential Rehabilitative Institutions	18,064.50	79,917.41	97,981.91
12 Juvenile Detention Centers	96,988.70		96,988.70
13 Special Program Jointures			
14 Other Tuition Not Included Elsewhere In This Section	505,096.26	298,104.55	803,200.81
<b>Section 2 Total</b>	<b>\$3,684,274.74</b>	<b>\$1,783,656.14</b>	<b>\$5,467,930.88</b>

LEA : 123468402 Upper Merion Area SD

Printed 11/17/2020 11:31:19 AM

**Food Service / Cafeteria Operations Fund (51)**

**3000 Operation of Non-Instructional Services**

**Total**

**100 Personnel Services – Salaries**

100 Personnel Services – Salaries 741,873.00

**Total Personnel Services – Salaries \$741,873.00**

**200 Personnel Services – Employee Benefits**

210 Group Insurance – Contracted Provider 10,670.00

220 Social Security Contributions 52,692.57

230 PSERS Retirement Contributions 271,572.38

250 Unemployment Compensation 279.30

260 Workers' Compensation 4,582.57

270 Group Insurance – Self-Insurance 213,287.82

280 Other Post-Employment Benefits (OPEB) 573.00

299 All Other Employee Benefits (6,820.34)

**Total Personnel Services – Employee Benefits \$546,837.30**

**400 Purchased Property Services**

430 Repairs and Maintenance Services 17,702.76

**Total Purchased Property Services \$17,702.76**

**500 Other Purchased Services**

580 Travel 1,598.72

**Total Other Purchased Services \$1,598.72**

**600 Supplies**

610 General Supplies 63,343.08

630 Food 689,662.51

**Total Supplies \$753,005.59**

**700 Property**

740 Depreciation 9,799.00

**Total Property \$9,799.00**

**800 Other Objects**

810 Dues and Fees 1,748.30

**Total Other Objects \$1,748.30**

**Total 3000 Operation of Non-Instructional Services \$2,072,564.67**

Food Service / Cafeteria Operations Fund (51)

	<u>Elementary</u>	<u>Secondary</u>	<u>Federal</u>	<u>Total</u>
<b>3100 Food Services</b>				
<b>100 Personnel Services – Salaries</b>				
100 Personnel Services – Salaries				741,873.00
<b>Total Personnel Services – Salaries</b>				<b>\$741,873.00</b>
<b>200 Personnel Services – Employee Benefits</b>				
210 Group Insurance – Contracted Provider				10,670.00
220 Social Security Contributions				52,692.57
230 PSERS Retirement Contributions				271,572.38
250 Unemployment Compensation				279.30
260 Workers' Compensation				4,582.57
270 Group Insurance – Self-Insurance				213,287.82
280 Other Post-Employment Benefits (OPEB)				573.00
299 All Other Employee Benefits				(6,820.34)
<b>Total Personnel Services – Employee Benefits</b>				<b>\$546,837.30</b>
<b>400 Purchased Property Services</b>				
430 Repairs and Maintenance Services				17,702.76
<b>Total Purchased Property Services</b>				<b>\$17,702.76</b>
<b>500 Other Purchased Services</b>				
580 Travel				1,598.72
<b>Total Other Purchased Services</b>				<b>\$1,598.72</b>
<b>600 Supplies</b>				
610 General Supplies				63,343.08
630 Food				689,662.51
<b>Total Supplies</b>				<b>\$753,005.59</b>
<b>700 Property</b>				
740 Depreciation				9,799.00
<b>Total Property</b>				<b>\$9,799.00</b>
<b>800 Other Objects</b>				
810 Dues and Fees				1,748.30
<b>Total Other Objects</b>				<b>\$1,748.30</b>
<b>Total 3100 Food Services</b>				<b>\$2,072,564.67</b>

**Child Care Operations Fund (52)**

**3000 Operation of Non-Instructional Services**

**Total**

**100 Personnel Services – Salaries**

100 Personnel Services – Salaries 95,917.79

**Total Personnel Services – Salaries \$95,917.79**

**200 Personnel Services – Employee Benefits**

210 Group Insurance – Contracted Provider 474.60

220 Social Security Contributions 6,923.00

230 PSERS Retirement Contributions 20,295.64

250 Unemployment Compensation 51,957.37

270 Group Insurance – Self-Insurance (27,549.08)

**Total Personnel Services – Employee Benefits \$52,101.53**

**500 Other Purchased Services**

580 Travel 6,954.57

**Total Other Purchased Services \$6,954.57**

**600 Supplies**

610 General Supplies 5,680.02

**Total Supplies \$5,680.02**

**Total 3000 Operation of Non-Instructional Services \$160,653.91**

**Child Care Operations Fund (52)**

**3300 Community Services**

Elementary                      Secondary                      Federal                      Total

**100 Personnel Services – Salaries**

100 Personnel Services – Salaries 95,917.79

**Total Personnel Services – Salaries \$95,917.79**

**200 Personnel Services – Employee Benefits**

210 Group Insurance – Contracted Provider 474.60

220 Social Security Contributions 6,923.00

230 PSERS Retirement Contributions 20,295.64

250 Unemployment Compensation 51,957.37

270 Group Insurance – Self-Insurance (27,549.08)

**Total Personnel Services – Employee Benefits \$52,101.53**

**500 Other Purchased Services**

580 Travel 6,954.57

**Total Other Purchased Services \$6,954.57**

**600 Supplies**

610 General Supplies 5,680.02

**Total Supplies \$5,680.02**

**Total 3300 Community Services \$160,653.91**

LEA : 123468402 Upper Merion Area SD

Printed 11/17/2020 11:31:34 AM

**Child Care Operations Fund (52)**

**5000 Other Expenditures and Financing Uses**

**Total**

**900 Other Uses of Funds**

939 Other Fund Transfers

432,264.00

**Total Other Uses of Funds**

**\$432,264.00**

**Total 5000 Other Expenditures and Financing Uses**

**\$432,264.00**

LEA : 123468402 Upper Merion Area SD

Printed 11/17/2020 11:31:34 AM

Child Care Operations Fund (52)

5200 Interfund Transfers – Out

Elementary

Secondary

Federal

Total

900 Other Uses of Funds

939 Other Fund Transfers

432,264.00

**Total Other Uses of Funds**

**\$432,264.00**

**Total 5200 Interfund Transfers – Out**

**\$432,264.00**



LEA : 123468402 Upper Merion Area SD

Printed 11/17/2020 11:31:34 AM

Child Care Operations Fund (52)

5210 General Fund Transfers

Elementary

Secondary

Federal

Total

900 Other Uses of Funds

939 Other Fund Transfers

432,264.00

**Total Other Uses of Funds**

**\$432,264.00**

**Total 5210 General Fund Transfers**

**\$432,264.00**

	<u>Food Service(51)</u>	<u>Child Care Operations(52)</u>	<u>Other Enterprise(58)</u>	<u>Internal Service(60)</u>	<u>Total</u>
<b>3000 <u>Operation of Non-Instructional Services</u></b>					
3100 Food Services	2,072,564.67				2,072,564.67
3300 Community Services		160,653.91			160,653.91
<b>Total Operation of Non-Instructional Services</b>	<b>\$2,072,564.67</b>	<b>\$160,653.91</b>			<b>\$2,233,218.58</b>
<b>5000 <u>Other Expenditures and Financing Uses</u></b>					
5200 Interfund Transfers - Out		432,264.00			432,264.00
<b>Total Other Expenditures and Financing Uses</b>		<b>\$432,264.00</b>			<b>\$432,264.00</b>
<b>TOTAL ACTUAL EXPENDITURES &amp; OTHER FINANCING USES</b>	<b>\$2,072,564.67</b>	<b>\$592,917.91</b>			<b>\$2,665,482.58</b>

LEA : 123468402 Upper Merion Area SD

Printed 11/17/2020 11:31:55 AM

Fund	School	School Number	Local Personnel	Local Nonpersonnel	State Personnel	State Nonpersonnel	Federal Personnel	Federal Nonpersonnel	Total	Explanation
10										
	Bridgeport El Sch	6468	5,477,657.69	549,925.56	937,220.23	94,091.56	497,739.13	35,155.03	7,591,789.20	
	Caley El Sch	4832	5,589,166.17	793,920.01	956,299.19	135,838.70	11,854.78	30,453.78	7,517,532.63	
	Candlebrook El Sch	3389	5,351,705.05	706,233.30	915,669.90	120,835.61	10,453.14	26,853.11	7,131,750.11	
	Gulph EL Sch	8426	6,280,826.35	854,145.75	1,074,641.36	146,143.25	12,935.71	37,857.66	8,406,550.08	
	Roberts El Sch	3391	4,945,288.60	587,227.16	846,132.56	100,473.81	8,398.27	21,574.35	6,509,094.75	
	Upper Merion HS	3395	18,523,721.40	2,493,549.27	3,169,385.07	426,643.10	34,872.95	62,402.99	24,710,574.78	
	Upper Merion MS	3394	18,889,888.12	2,775,414.00	3,232,035.73	474,869.80	42,630.06	76,283.88	25,491,121.59	
<b>Total</b>			<b>65,058,253.38</b>	<b>8,760,415.05</b>	<b>11,131,384.04</b>	<b>1,498,895.83</b>	<b>618,884.04</b>	<b>290,580.80</b>	<b>87,358,413.14</b>	