

LEA Name : Upper Merion Area SD
Address : 435 Crossfield Rd
King of Prussia , PA 19406

County : Montgomery
AUN Number : 123468402
LEA Type : SD

Annual Financial Report Accuracy Certification Statement

For Fiscal Year Ending
6/30/2024

Pennsylvania Department of Education
&
Office of Comptroller Operations

PDE-2056: Intermediate Unit
PDE-2057: School District, AVTS/CTC, Charter School,
and Special Program Jointure

CERTIFICATION: By signing this page I agree that the electronic data submitted is a complete and accurate statement of the financial operations and status of the local education agency for the fiscal year. It has been prepared in accordance with generally accepted accounting principles and established Commonwealth of PA reporting guidelines.

Chief School Administrator Signature

Date

Board Secretary Signature

Date

Michael P Keeley

Contact Person

mkeeley@umasd.org

Contact Person E-mail Address

(610)205-6417 Ext :

Contact Person Telephone Number

Contact Person Fax Number

Audit Certification
Annual Financial Report:
For Fiscal Year Ending **6/30/2024**
(Pursuant to PA School Code Section 218(b))

LEA Name : Upper Merion Area SD
AUN Number : 123468402
County : Montgomery

Audit Certification Due: 12/31/2024

This certification is applicable to the Annual Financial Report data submitted through the Consolidated Financial Reporting System (CFRS).

CERTIFICATION: By signing this page I agree that the financial statements of the school have been properly audited as noted above pursuant to Article XXIV, and in the auditor's professional opinion, the Annual Financial Report (PDE-2057) submitted through CFRS is materially consistent with the audited financial statements.

Chief School Administrator

Board Secretary

Signature

Date

Signature

Date

Michael P Keeley

Contact Person

mkeeley@umasd.org

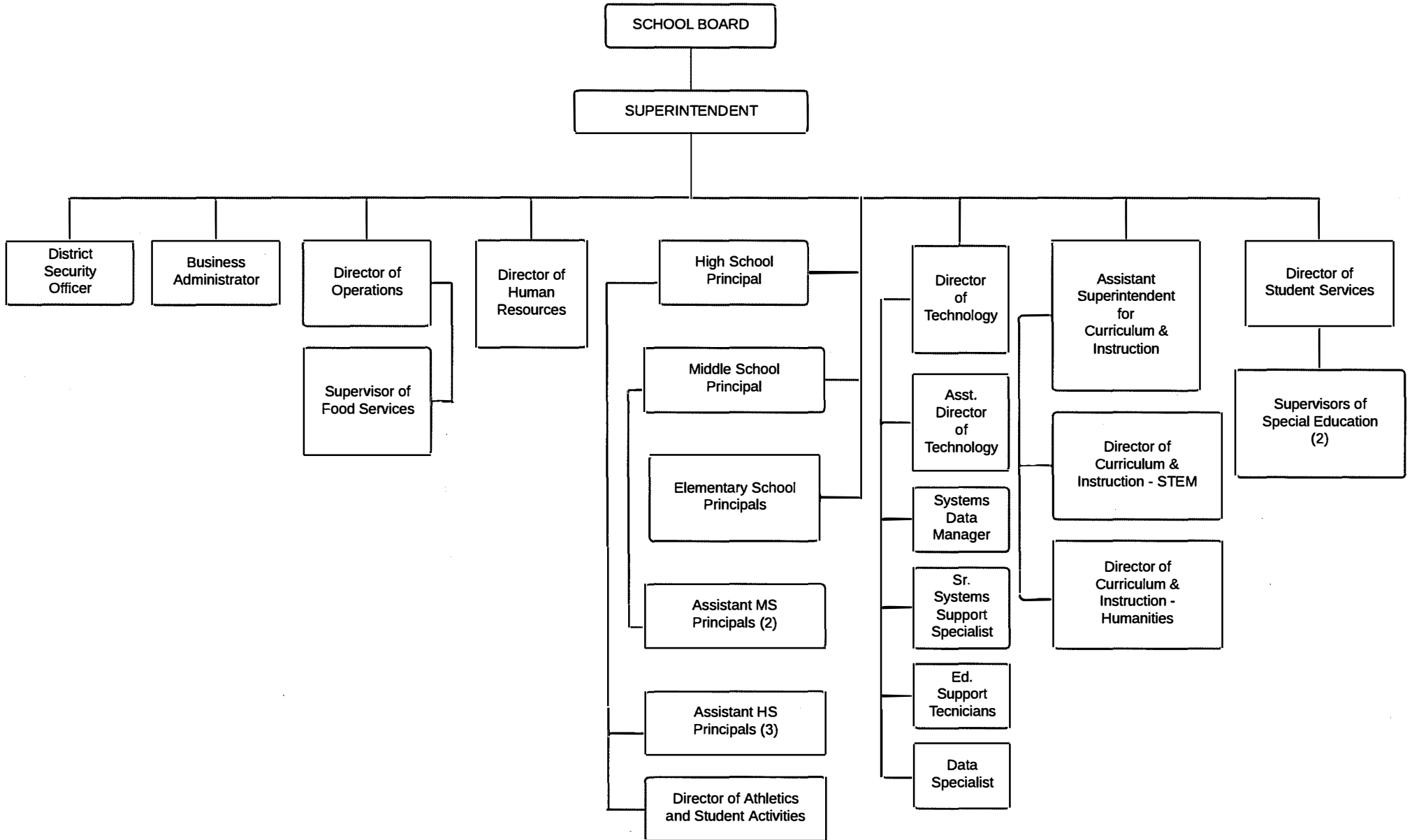
Contact Person E-mail Address

(610)205-6417 Ext :

Contact Person Telephone Number

Contact Person Fax Number

UPPER MERION AREA SCHOOL DISTRICT ORGANIZATIONAL CHART





Book	Policy Manual
Section	600 Finances
Title	GASB Statement 34
Code	622
Status	Active
Adopted	March 1, 2010

Purpose

The Board recognizes the need to implement the required accounting and financial reporting standards stipulated by the Pennsylvania Department of Education.

The primary objectives of implementing the GASB Statement 34 are to assure compliance with state requirements, and properly account for both the financial and economic resources of the district.

Authority

Participation of the school district in any such activity shall be in accordance with Board policy.[\[1\]](#)[\[2\]](#)

Delegation of Responsibility

The responsibility to coordinate the compilation and preparation of all information necessary to implement this policy is delegated to the Business Administrator.

Guidelines

In order to associate debt with acquired assets and to avoid net asset deficits, any asset that has been acquired with debt proceeds shall be capitalized, regardless of the cost of the asset. The asset life of these assets shall be considered relative to the time of the respective debt amortizations.

For all other assets not acquired by debt proceeds, the dollar value of any single item for inclusion in the fixed assets accounts shall be not less than \$4,000.

The capitalization threshold shall be set at a level that will capture at least eighty percent (80%) of all fixed assets.

The assets listed below do not normally individually meet capitalization threshold criteria:

1. Library books.
2. Classroom texts.
3. Computer equipment.

4. Classroom furniture.

These asset category costs shall be capitalized and depreciated as groups when that group's acquisition cost exceeds the capitalization threshold in any given fiscal year.

For group asset depreciation purposes, the estimated useful life of the group may be based on the weighted average or simple average of the useful life of individual items, or on an assessment of the life of the group as a whole. Periodically, the district shall review the estimated life of groups of assets and adjust the remaining depreciation life of the group.

Assets that fall below the capitalization threshold for GASB 34 reporting purposes may still be significant for insurance, warranty service, and obsolescence/replacement policy tracking purposes. The district may record and maintain these non-GASB 34 asset inventories in subsidiary ledgers.

Legal

1. 24 P.S. 218

2. 24 P.S. 613

Governmental Accounting Standards Board, Statement No. 34

<u>Val Number</u>	<u>Description</u>	<u>Justification</u>
30116	<p>Revenue Detail: A large amount has been reported as Earnings on Investments in Fund 32, account 6500, which should only include interest and/or dividend earnings. Correct or provide a brief explanation of the revenue reported.</p> <p>Revenue Detail 6500, Fund 32: \$1,102,916.23</p>	<p>An increased level of interest income was generated based on higher interest rates paid on the Districts cash and investment balances in the capital reserve fund.</p>
30148	<p>Revenue Detail: An amount has been reported in revenue code 6837. Any portion of this revenue which was received as pass through from another PA LEA (Intermediate Units, School Districts, Charter Schools, and Career Technology Centers) must be reported in revenue code 6838. Please confirm within the justification that no pass through funds from other LEAs are included in 6837.</p>	<p>No pass through funds from other LEA's are included in this account. The revenue recorded to this account represents the State and Local Fiscal Recovery Funds Grant for Behavioral Health passed through Montgomery County.</p>
42420	<p>Expenditure Detail: Total current year 2700-513 expenditure varies from prior year by 10%. Correct the data or enter a justification.</p> <p>2700-513, AFR Exp Detail: \$6,031,288.61 2700-513, PY AFR Amount: \$5,443,361.47</p>	<p>2023-2024 rates increased by 2.75%. Increase in enrollment, schools serviced and homeless population has increased miles and hours paid to carrier.</p>
50117	<p>SOIN: Reductions/Retirements have been reported for Governmental Fund Leases and Other Right-to-Use Arrangements. However, comparable entries have not been reported in Governmental Fund Expenditure Function 5140, Object 910. Please correct or provide a justification.</p> <p>SOIN: Govt Funds Lease and Other Right to Use Arrangements Retirements/Repayments: \$1,257,065.00 Govt Funds Expenditure Detail: Function 5140, Object 910: \$1,120,137.00</p>	<p>SOIN reductions includes \$136,927 from a remeasurement of a contract. A new contract was executed with an existing vendor mid year resulting in a remeasurement. The SBITA was amortized down on the government wide as nonoperating activity.</p>
50118	<p>SOIN: Reductions/Retirements have been reported for Governmental Fund General Obligation Bonds, Extended Term Financing, and/or Other Long Term Debt/Liabilities. However, comparable entries have not been reported in Governmental Fund Expenditure Functions 5110 & 5120, Object 910. Please correct or provide a justification.</p> <p>SOIN: Govt Funds GOB, Extended Term Financing, and/or Other Long Term Debt Retirements/Repayments: \$5,511,501.00 Govt Funds Expenditure Detail: Function 5110/5120, Object 910: \$4,500,000.00</p>	<p>SOIN retirements/repayments include \$1,011,501 of premium/discount (PD) amortization. PD are recognized in full on the governmental funds during the year of a debt issuance. Then it is amortized down on the government-wide as non-operating activity.</p>

Amounts Expressed in Whole Dollars	<u>General Fund</u> <u>(10)</u>	<u>Student Sponsored</u> <u>Activity Fund</u> <u>(21)</u>	<u>Public Purpose Trust</u> <u>(27)</u>	<u>Other Compt Approved</u> <u>(28)</u>	<u>Athletic / Activity</u> <u>(29)</u>
Assets And Deferred Outflows Of Resources					
Assets					
0100 Cash and Cash Equivalents	18,699,691				
0110 Investments	18,642,887				
0120 Taxes Receivable	1,879,621				
0130 Due From Other Funds	828				
0141 Due From Other Governments					
0142 State Revenue Receivable	3,965,949				
0143 Federal Revenue Receivable	690,669				
0145 Other Intergovernmental Revenue Receivable					
0146 Due from Primary Government					
0147 Due from Component Unit					
0150 Other Receivables	125,578				
0170 Inventories					
0180 Prepaid Expenses (Expenditures)					
0190 Other Current Assets					
Total Assets	\$44,005,223				
0910 Deferred Outflows of Resources					
Total Assets And Deferred Outflows Of Resources	\$44,005,223				

Amounts Expressed in Whole Dollars	<u>Capital Reserve (690.</u> <u>1850)</u> <u>(31)</u>	<u>Capital Reserve (1431)</u> <u>(32)</u>	<u>Other Capital Projects</u> <u>Fund</u> <u>(39)</u>	<u>Debt Service</u> <u>(40)</u>	<u>Permanent</u> <u>(90)</u>
Assets And Deferred Outflows Of Resources					
Assets					
0100 Cash and Cash Equivalents		19,049,802	2,529,904		
0110 Investments					
0120 Taxes Receivable					
0130 Due From Other Funds					
0141 Due From Other Governments					
0142 State Revenue Receivable					
0143 Federal Revenue Receivable					
0145 Other Intergovernmental Revenue Receivable					
0146 Due from Primary Government					
0147 Due from Component Unit					
0150 Other Receivables					
0170 Inventories					
0180 Prepaid Expenses (Expenditures)					
0190 Other Current Assets					
Total Assets		\$19,049,802	\$2,529,904		
0910 Deferred Outflows of Resources					
Total Assets And Deferred Outflows Of Resources		\$19,049,802	\$2,529,904		

Amounts Expressed in Whole Dollars

Total Governmental Funds

Assets And Deferred Outflows Of Resources

Assets	
0100 Cash and Cash Equivalents	40,279,397
0110 Investments	18,642,887
0120 Taxes Receivable	1,879,621
0130 Due From Other Funds	828
0141 Due From Other Governments	
0142 State Revenue Receivable	3,965,949
0143 Federal Revenue Receivable	690,669
0145 Other Intergovernmental Revenue Receivable	
0146 Due from Primary Government	
0147 Due from Component Unit	
0150 Other Receivables	125,578
0170 Inventories	
0180 Prepaid Expenses (Expenditures)	
0190 Other Current Assets	
Total Assets	\$65,584,929
0910 Deferred Outflows of Resources	
Total Assets And Deferred Outflows Of Resources	\$65,584,929

Amounts Expressed in Whole Dollars

	<u>General Fund</u> <u>(10)</u>	<u>Student Sponsored</u> <u>Activity Fund</u> <u>(21)</u>	<u>Public Purpose Trust</u> <u>(27)</u>	<u>Other Compt Approved</u> <u>(28)</u>	<u>Athletic / Activity</u> <u>(29)</u>
Liabilities And Deferred Inflows Of Resources And Fund Balances					
Liabilities					
0400 Due to Other Funds					
0411 Due to Other Governments					
0412 Due to Primary Government					
0413 Due to Component Unit					
0420 Accounts Payable	2,809,502				
0430 Contracts Payable					
0440 Current Portion of Long-Term Debt					
0450 Short-Term Payables					
0461 Accrued Salaries and Benefits	4,850,370				
0462 Payroll Deductions and Withholding	7,662,086				
0480 Unearned Revenues	5,187				
0490 Other Current Liabilities	7,808,927				
Total Liabilities	\$23,136,072				
0950 Deferred Inflows of Resources		1,376,339			
Fund Balances					
0810 Nonspendable Fund Balance					
0820 Restricted Fund Balance					
0830 Committed Fund Balance					
0840 Assigned Fund Balance	9,800,000				
0850 Unassigned Fund Balance	9,692,812				
Total Fund Balances	\$19,492,812				
Total Liabilities, Deferred Inflows Of Resources And Fund Balances	\$44,005,223				

Amounts Expressed in Whole Dollars

<u>Capital Reserve (690.</u>	<u>Capital Reserve (1431)</u>	<u>Other Capital Projects</u>	<u>Debt Service</u>	<u>Permanent</u>
<u>1850)</u>	<u>(32)</u>	<u>Fund</u>	<u>(40)</u>	<u>(90)</u>
<u>(31)</u>		<u>(39)</u>		

Liabilities And Deferred Inflows Of Resources And Fund Balances

Liabilities

0400 Due to Other Funds			
0411 Due to Other Governments			
0412 Due to Primary Government			
0413 Due to Component Unit			
0420 Accounts Payable	199,422	1,047	
0430 Contracts Payable			
0440 Current Portion of Long-Term Debt			
0450 Short-Term Payables			
0461 Accrued Salaries and Benefits			
0462 Payroll Deductions and Withholding			
0480 Unearned Revenues			
0490 Other Current Liabilities			

Total Liabilities	\$199,422	\$1,047
--------------------------	------------------	----------------

0950 Deferred Inflows of Resources

Fund Balances

0810 Nonspendable Fund Balance		
0820 Restricted Fund Balance	18,850,380	2,528,857
0830 Committed Fund Balance		
0840 Assigned Fund Balance		
0850 Unassigned Fund Balance		

Total Fund Balances	\$18,850,380	\$2,528,857
----------------------------	---------------------	--------------------

Total Liabilities, Deferred Inflows Of Resources And Fund Balances	\$19,049,802	\$2,529,904
---	---------------------	--------------------

Amounts Expressed in Whole Dollars

Total Governmental Funds

Liabilities And Deferred Inflows Of Resources And Fund Balances

Liabilities

0400 Due to Other Funds	
0411 Due to Other Governments	
0412 Due to Primary Government	
0413 Due to Component Unit	
0420 Accounts Payable	3,009,971
0430 Contracts Payable	
0440 Current Portion of Long-Term Debt	
0450 Short-Term Payables	
0461 Accrued Salaries and Benefits	4,850,370
0462 Payroll Deductions and Withholding	7,662,086
0480 Unearned Revenues	5,187
0490 Other Current Liabilities	7,808,927

Total Liabilities \$23,336,541

0950 Deferred Inflows of Resources	1,376,339
------------------------------------	-----------

Fund Balances

0810 Nonspendable Fund Balance	
0820 Restricted Fund Balance	21,379,237
0830 Committed Fund Balance	
0840 Assigned Fund Balance	9,800,000
0850 Unassigned Fund Balance	9,692,812

Total Fund Balances \$40,872,049

Total Liabilities, Deferred Inflows Of Resources And Fund Balances \$65,584,929

Amounts Expressed in Whole Dollars	<u>General Fund</u> <u>(10)</u>	<u>Student Sponsored</u> <u>Activity Fund</u> <u>(21)</u>	<u>Public Purpose Trust</u> <u>(27)</u>	<u>Other Compt Approved</u> <u>(28)</u>	<u>Athletic / Activity</u> <u>(29)</u>
Revenues					
6000 Revenue from Local Sources	106,800,167				
7000 Revenue from State Sources	19,035,591				
8000 Revenue from Federal Sources	4,103,016				
Total Revenues	\$129,938,774				
Expenditures					
1000 Instruction	76,264,306				
2000 Support Services	38,376,711				
3000 Operation of Non-Instructional Services	2,612,853				
4000 Facilities Acquisition, Construction and Improvement Services	125,576				
5110 Debt Service	11,739,984				
5130 Refund of Prior Year Revenues / Receipts	79,888				
5140 Leases and Other Right-to-Use Arrangements	1,198,944				
Total Expenditures	\$130,398,262				
Excess (Deficiency) Of Revenues Over Expenditures	(\$459,488)				
Other Financing Sources (Uses)					
9110 Face Value of Bonds Issued					
9120 Proceeds from Refunding of Bonds					
9130 Bond Premiums					
9200 Proceeds from Extended Term Financing, Leases, and Other Right-to-Use Arrangements					
9300 Interfund Transfers - IN					
9400 Sale of or Compensation for Loss of Fixed Assets	256,828				
9710 Transfers from Component Units					
9720 Transfers from Primary Governments					
9910 Other Financing Sources Not Listed in the 9000 Series					
9990 Insurance Recoveries	819,187				
5120 Debt Service – Refunded Bonds					
5150 Bond Discounts					
5200 Interfund Transfers – Out					
5300 Transfers Out to Component Units/Primary Governments					
Total Other Financing Sources (Uses)	\$1,076,015				

Amounts Expressed in Whole Dollars	<u>Capital Reserve (690, 1850) (31)</u>	<u>Capital Reserve (1431) (32)</u>	<u>Other Capital Projects Fund (39)</u>	<u>Debt Service (40)</u>	<u>Permanent (90)</u>
Revenues					
6000 Revenue from Local Sources		1,102,916	266,548		
7000 Revenue from State Sources					
8000 Revenue from Federal Sources					
Total Revenues		\$1,102,916	\$266,548		
Expenditures					
1000 Instruction			25,119		
2000 Support Services		2,980,184	129,158		
3000 Operation of Non-Instructional Services			56,793		
4000 Facilities Acquisition, Construction and Improvement Services		5,863,690	5,377,385		
5110 Debt Service					
5130 Refund of Prior Year Revenues / Receipts					
5140 Leases and Other Right-to-Use Arrangements					
Total Expenditures		\$8,843,874	\$5,588,455		
Excess (Deficiency) Of Revenues Over Expenditures		(\$7,740,958)	(\$5,321,907)		
Other Financing Sources (Uses)					
9110 Face Value of Bonds Issued					
9120 Proceeds from Refunding of Bonds					
9130 Bond Premiums					
9200 Proceeds from Extended Term Financing, Leases, and Other Right-to-Use Arrangements					
9300 Interfund Transfers - IN					
9400 Sale of or Compensation for Loss of Fixed Assets					
9710 Transfers from Component Units					
9720 Transfers from Primary Governments					
9910 Other Financing Sources Not Listed in the 9000 Series					
9990 Insurance Recoveries					
5120 Debt Service – Refunded Bonds					
5150 Bond Discounts					
5200 Interfund Transfers – Out					
5300 Transfers Out to Component Units/Primary Governments					
Total Other Financing Sources (Uses)					

Amounts Expressed in Whole Dollars	<u>Total Governmental Funds</u>
Revenues	
6000 Revenue from Local Sources	108,169,631
7000 Revenue from State Sources	19,035,591
8000 Revenue from Federal Sources	4,103,016
Total Revenues	\$131,308,238
Expenditures	
1000 Instruction	76,289,425
2000 Support Services	41,486,053
3000 Operation of Non-Instructional Services	2,669,646
4000 Facilities Acquisition, Construction and Improvement Services	11,366,651
5110 Debt Service	11,739,984
5130 Refund of Prior Year Revenues / Receipts	79,888
5140 Leases and Other Right-to-Use Arrangements	1,198,944
Total Expenditures	\$144,830,591
Excess (Deficiency) Of Revenues Over Expenditures	(\$13,522,353)
Other Financing Sources (Uses)	
9110 Face Value of Bonds Issued	
9120 Proceeds from Refunding of Bonds	
9130 Bond Premiums	
9200 Proceeds from Extended Term Financing, Leases, and Other Right-to-Use Arrangements	
9300 Interfund Transfers - IN	
9400 Sale of or Compensation for Loss of Fixed Assets	256,828
9710 Transfers from Component Units	
9720 Transfers from Primary Governments	
9910 Other Financing Sources Not Listed in the 9000 Series	
9990 Insurance Recoveries	819,187
5120 Debt Service – Refunded Bonds	
5150 Bond Discounts	
5200 Interfund Transfers – Out	
5300 Transfers Out to Component Units/Primary Governments	
Total Other Financing Sources (Uses)	\$1,076,015

Amounts Expressed in Whole Dollars	<u>General Fund</u> <u>(10)</u>	<u>Student Sponsored</u> <u>Activity Fund</u> <u>(21)</u>	<u>Public Purpose Trust</u> <u>(27)</u>	<u>Other Compt Approved</u> <u>(28)</u>	<u>Athletic / Activity</u> <u>(29)</u>
Special And Extraordinary Items					
9920 Special Items – Gains					
9930 Extraordinary Items – Gains					
5520 Special Items – Losses					
5530 Extraordinary Items – Losses					
Net Change In Fund Balances	\$616,527				
Fund Balance					
0001 Fund Balance - Beginning of Fiscal Year	18,876,285				
Fund Balance - End Of Year	\$19,492,812				

Amounts Expressed in Whole Dollars	<u>Capital Reserve (690.</u> <u>1850</u> <u>(31)</u>	<u>Capital Reserve (1431)</u> <u>(32)</u>	<u>Other Capital Projects</u> <u>Fund</u> <u>(39)</u>	<u>Debt Service</u> <u>(40)</u>	<u>Permanent</u> <u>(90)</u>
Special And Extraordinary Items					
9920 Special Items – Gains					
9930 Extraordinary Items – Gains					
5520 Special Items – Losses					
5530 Extraordinary Items – Losses					
Net Change In Fund Balances		(\$7,740,958)	(\$5,321,907)		
Fund Balance					
0001 Fund Balance - Beginning of Fiscal Year		26,591,337	7,850,764		
Fund Balance - End Of Year		\$18,850,379	\$2,528,857		

Amounts Expressed in Whole Dollars	<u>Total Governmental Funds</u>
Special And Extraordinary Items	
9920 Special Items – Gains	
9930 Extraordinary Items – Gains	
5520 Special Items – Losses	
5530 Extraordinary Items – Losses	
Net Change In Fund Balances	(\$12,446,338)
Fund Balance	
0001 Fund Balance - Beginning of Fiscal Year	53,318,386
Fund Balance - End Of Year	\$40,872,048

Amounts Expressed in Whole Dollars	<u>Food Service</u> <u>(51)</u>	<u>Child Care</u> <u>Operations</u> <u>(52)</u>	<u>Other Enterprise</u> <u>(58)</u>	<u>TOTAL</u>	<u>Internal Service</u> <u>(60)</u>
Assets And Deferred Outflows Of Resources					
Current Assets					
0100 Cash and Cash Equivalents	808,985			808,985	
0110 Investments					
0130 Due From Other Funds					
0141 Due From Other Governments	255,512			255,512	
0142 State Revenue Receivable					
0143 Federal Revenue Receivable					
0146 Due from Primary Government					
0147 Due from Component Unit					
0150 Other Receivables					
0170 Inventories	97,088			97,088	
0180 Prepaid Expenses (Expenditures)					
0190 Other Current Assets					
Total Current Assets	\$1,161,585			\$1,161,585	
Noncurrent Assets					
0211 Land					
0212 Site Improvements (Net)					
0220 Buildings and Building Improvements (Net)					
0230 Tangible Property and Intangible Right-To-Use Assets (Net)	56,556			56,556	
0250 Construction in Progress					
0260 Long Term Prepayments					
0290 Other Noncurrent Assets					
Total Noncurrent Assets	\$56,556			\$56,556	
0910 Deferred Outflows of Resources	350,846			350,846	
Total Assets And Deferred Outflows Of Resources	\$1,568,987			\$1,568,987	

Amounts Expressed in Whole Dollars	<u>Food Service</u> <u>(51)</u>	<u>Child Care</u> <u>Operations</u> <u>(52)</u>	<u>Other Enterprise</u> <u>(58)</u>	<u>TOTAL</u>	<u>Internal Service</u> <u>(60)</u>
Liabilities And Deferred Inflows Of Resources And Net Position					
Current Liabilities					
0400 Due to Other Funds	828			828	
0411 Due to Other Governments					
0413 Due to Component Unit					
0420 Accounts Payable	22,997			22,997	
0430 Contracts Payable					
0440 Current Portion of Long-Term Debt					
0450 Short-Term Payables					
0461 Accrued Salaries and Benefits	11,754			11,754	
0462 Payroll Deductions and Withholding					
0480 Unearned Revenues	69,697			69,697	
0490 Other Current Liabilities					
Total Current Liabilities	\$105,276			\$105,276	
Noncurrent Liabilities					
0510 Bonds Payable					
0520 Extended-Term Financing Agreements Payable					
0530 Lease and Other Right-To-Use Obligations					
0540 Accumulated Compensated Absences	71,534			71,534	
0550 Authority Lease Obligations					
0560 Other Post-Employment Benefits (OPEB)	101,385			101,385	
0570 Net Pension Liability	1,972,000			1,972,000	
0599 Other Noncurrent Liabilities					
Total Noncurrent Liabilities	\$2,144,919			\$2,144,919	
Total Liabilities	\$2,250,195			\$2,250,195	
0950 Deferred Inflows of Resources	112,146			112,146	
Net Position					
0791 Net Investment in Capital Assets	56,556			56,556	
0008 Restricted Net Position (0792 – 0798)	(849,910)			(849,910)	
0799 Unrestricted Net Position					
Total Net Position	(\$793,354)			(\$793,354)	
Total Liabilities And Deferred Inflows Of Resources And Net Position	\$1,568,987			\$1,568,987	

Amounts Expressed in Whole Dollars	<u>Food Service</u> <u>(51)</u>	<u>Child Care Operations</u> <u>(52)</u>	<u>Other Enterprise</u> <u>(58)</u>	<u>TOTAL</u>	<u>Internal Service</u> <u>(60)</u>
Operating Revenues					
6600 Food Service Revenue	633,815			633,815	
0071 Charges for Services					
0072 Other Operating Revenue					
Total Operating Revenues	\$633,815			\$633,815	
Operating Expenses					
100 Personnel Services – Salaries	870,689			870,689	
200 Personnel Services – Employee Benefits	474,998			474,998	
300 Purchased Professional and Technical Services	8,071			8,071	
400 Purchased Property Services	50,830			50,830	
500 Other Purchased Services	2,682			2,682	
600 Supplies	1,323,150			1,323,150	
740 Depreciation	9,395			9,395	
770 Amortization Expense					
810 Dues and Fees	2,515			2,515	
880 Refunds of Prior Years' Receipts					
890 Miscellaneous Expenditures					
Total Operating Expenses	\$2,742,330			\$2,742,330	
Operating Income (Loss)	(\$2,108,515)			(\$2,108,515)	
Non Operating Revenues (Expenses)					
6500 Earnings on Investments	1,766			1,766	
6830 Federal Revenue from Intermediary Sources					
6920 Contributions and Donations from Private Sources					
6930 Gains or Losses on Sale of Fixed Assets					
6991 Refunds of a Prior Year Expenditure					
7000 Revenue from State Sources	426,216			426,216	
8000 Revenue from Federal Sources	1,824,269			1,824,269	
9990 Insurance Recoveries					
820 Claims and Judgments Against the LEA					
830 Interest					
TOTAL Non Operating Revenues (Expenses)	\$2,252,251			\$2,252,251	
Income (Loss) Before Contributions And Transfers	\$143,736			\$143,736	

Amounts Expressed in Whole Dollars	<u>Food Service</u> <u>(51)</u>	<u>Child Care Operations</u> <u>(52)</u>	<u>Other Enterprise</u> <u>(58)</u>	<u>TOTAL</u>	<u>Internal Service</u> <u>(60)</u>
Contributions, Transfers, and Special and Extraordinary Items					
5200 Interfund Transfers – Out					
5300 Transfers Out to Component Units/Primary Governments					
5520 Special Items – Losses					
5530 Extraordinary Items – Losses					
9300 Interfund Transfers - IN					
9500 Capital Contributions					
9700 Transfers IN From Component Units/Primary Governments					
9920 Special Items – Gains					
9930 Extraordinary Items – Gains					
Change In Net Position	\$143,736			\$143,736	
0002 Net Position - Beginning of Fiscal Year	(937,090)			(937,090)	
0003 Accounting Changes / Residual Equity Transfers					
Net Position - End Of Year	(\$793,354)			(\$793,354)	

Amounts Expressed in Whole Dollars	<u>Food Service</u> <u>(51)</u>	<u>Child Care Operations</u> <u>(52)</u>	<u>Other Enterprise</u> <u>(58)</u>	<u>TOTAL</u>	<u>Internal Service(60)</u>
Cash Flows From Operating Activities					
0011 Cash Receipts From Users	648,188			648,188	
0012 Cash Receipts From Assessments Made to Other Funds					
0013 Cash Receipts From Earnings on Investments					
0014 Cash Receipts From Other Operating Revenue					
0015 Cash Payments To Employees For Services	1,372,177			1,372,177	
0016 Cash Payments For Insurance Claims					
0017 Cash Payments To Suppliers For Goods and Services	1,367,180			1,367,180	
0018 Cash Payments For Other Operating Expenses					
Net Cash Provided By (Used For) Operating Activities	(\$2,091,169)			(\$2,091,169)	
Cash Flows From Non-Capital Financing Activities					
0021 Receipts From Local Sources - 6000					
0022 Receipts From State Sources - 7000	416,552			416,552	
0023 Receipts From Federal Sources -8000	1,677,427			1,677,427	
0024 Notes and Loans Received (Repaid)					
0025 Interest Paid on Notes/Loans - 5100-830					
0026 Operating Transfers In (Out)/Residual Equity Trans					
0027 Operating Transfers In (Out) Primary Government / Comp Unit					
0028 Receipts From Refund of Prior Year Expenditures - 6991					
0029 Special and Extraordinary Gains (losses)					
0030 Receipts from Insurance Recoveries -9990					
Net Cash Prov By (Used for) Non-Capital Financing Activities	\$2,093,979			\$2,093,979	
Cash Flows From Capital and Related Financing Activities					
0031 Payments For Fac Acq, Const, and Imp - 4000	(27,298)			(27,298)	
0032 Proceeds from Disposal of Capital Assets					
0033 Proceeds From Extended Term Financing - 9200					
0034 Principal Paid on Financing Agreements					
0035 Interest Paid on Financing Agreements - 5100-830					
0036 (Inc) Dec in Contributed Capital					
Net Cash Prov By (Used for) Capital and Related Financing Activities	(\$27,298)			(\$27,298)	
Cash Flows From Investing Activities					
0041 Earnings on Investments - 6500	1,766			1,766	
0042 Purchase of Inv Securities / Deposits to Inv Pools					
0043 Receipts From Investment Pool Withdrawals					
0044 Proceeds from Sale and Maturity of Inv Securities					

LEA : 123468402 Upper Merion Area SD

Printed 11/21/2024 8:41:45 AM

0045 Loans Received (Paid)

Net Cash Prov By (Used for) Investing Activities	\$1,766	\$1,766
---	----------------	----------------

LEA : 123468402 Upper Merion Area SD

Printed 11/21/2024 8:41:45 AM

	<u>Food Service</u> <u>(51)</u>	<u>Child Care Operations</u> <u>(52)</u>	<u>Other Enterprise</u> <u>(58)</u>	<u>TOTAL</u>	<u>Internal Service</u> <u>(60)</u>
Net Increase (Decrease) in Cash Flows	(22,722)			(22,722)	
0004 Cash and Cash Equivalents Beginning of Year	831,707			831,707	
Cash and Cash Equivalents at Year End	\$808,985			\$808,985	

Reconciliation of Operating Income (Loss) To Net Cash Provided by (Used For) Operating Activities

0005 Operating Income (Loss) per REP	(2,108,515)			(2,108,515)	
Adjustments					
0051 Depreciation and Net Amortization	9,395			9,395	
0052 Provision for Uncollectible Accounts					
0053 Other Adjustments					
Effect of Changes in Assets, Liabilities, Deferred Outflows and Deferred Inflows					
0054 (Inc) Dec In Accounts Receivable (0120-0150)	10,270			10,270	
0055 Advances to Other Funds					
0056 (Inc) Dec in Inventories (0170)	(1,648)			(1,648)	
0057 (Inc) Dec in Prepaid Expenses (0180)					
0058 (Inc) Dec in Other Current or Noncurrent Assets					
0064 Deferred Outflows (0910)					
0059 Inc (Dec) in Accounts Payable (0400-0450)	22,955			22,955	
0060 Inc (Dec) in Accrued Salaries/Benefits (0461)	4,222			4,222	
0065 Inc (Dec) in Net Pension Liabilities (0570)	(47,000)			(47,000)	
0066 Inc (Dec) in Other Postemp Benefit Oblig (0560)	(2,239)			(2,239)	
0061 Inc (Dec) in Payroll Deductions/Withholding (0462)					
0062 Inc (Dec) in Unearned Revenue (0480)	4,103			4,103	
0063 Inc (Dec) in Other Current or Noncurrent Liabilities	17,288			17,288	
0067 Deferred Inflows (0950)					
Total Adjustments	\$17,346			\$17,346	
Cash Provided By (Used for) Total	(\$2,091,169)			(\$2,091,169)	

**COMBINED STATEMENT OF CASH FLOWS
SCHEDULE OF NONCASH INVESTING, CAPITAL, AND FINANCING ACTIVITIES**

Explanation of Transaction and Balance Sheet Effect	Amount
Donated Foods	257,726
Total	\$257,726

LEA : 123468402 Upper Merion Area SD

Printed 11/21/2024 8:41:46 AM

Amounts Expressed in Whole Dollars

Private Purpose Trust
(71)

Investment Trust
(72)

Pension Trust
(73)

Student Activity Custodial
(81)

Assets And Deferred Outflows Of Resources

Assets

0100 Cash and Cash Equivalents	86,559			599,506
0110 Investments				
0130 Due From Other Funds				
0140 Due from Other Governments, Primary Government and Component Units				
0150 Other Receivables				
0170 Inventories				
0180 Prepaid Expenses (Expenditures)				
0190 Other Current Assets				
0220 Buildings and Building Improvements (Net)				
0230 Tangible Property and Intangible Right-To-Use Assets (Net)				
Total Assets	\$86,559			\$599,506
0910 Deferred Outflows of Resources				
Total Assets And Deferred Outflows Of Resources	\$86,559			\$599,506

LEA : 123468402 Upper Merion Area SD

Printed 11/21/2024 8:41:46 AM

Amounts Expressed in Whole Dollars

Other Custodial
(89)

Fiduciary Component Units
(98)

Total Fiduciary Funds

Assets And Deferred Outflows Of Resources

Assets

0100 Cash and Cash Equivalents			686,065
0110 Investments			
0130 Due From Other Funds			
0140 Due from Other Governments, Primary Government and Component Units			
0150 Other Receivables			
0170 Inventories			
0180 Prepaid Expenses (Expenditures)			
0190 Other Current Assets			
0220 Buildings and Building Improvements (Net)			
0230 Tangible Property and Intangible Right-To-Use Assets (Net)			

Total Assets **\$686,065**

0910 Deferred Outflows of Resources

Total Assets And Deferred Outflows Of Resources **\$686,065**

LEA : 123468402 Upper Merion Area SD

Printed 11/21/2024 8:41:46 AM

Amounts Expressed in Whole Dollars	<u>Private Purpose Trust</u> (71)	<u>Investment Trust</u> (72)	<u>Pension Trust</u> (73)	<u>Student Activity Custodial</u> (81)
Liabilities, Deferred Inflows Of Resources And Net Position				
Liabilities				
0400 Due to Other Funds				
0410 Due to Other Governments, Primary Government and Component Units				
0420 Accounts Payable				5,472
0430 Contracts Payable				
0450 Short-Term Payables				
0460 Payroll Accruals and Withholdings				
0480 Unearned Revenues				
0490 Other Current Liabilities				
Total Liabilities				\$5,472
0950 Deferred Inflows of Resources				
Net Position				
0791 Net Investment in Capital Assets				
0009 Restricted Net Position (0792 – 0798)	86,559			594,034
0799 Unrestricted Net Position				
Total Net Position	\$86,559			\$594,034
Total Liabilities, Deferred Inflows Of Resources And Net Position	\$86,559			\$599,506

LEA : 123468402 Upper Merion Area SD

Printed 11/21/2024 8:41:46 AM

Amounts Expressed in Whole Dollars	<u>Other Custodial</u> <u>(89)</u>	<u>Fiduciary Component Units</u> <u>(98)</u>	<u>Total Fiduciary Funds</u>
Liabilities, Deferred Inflows Of Resources And Net Position			
Liabilities			
0400 Due to Other Funds			
0410 Due to Other Governments, Primary Government and Component Units			
0420 Accounts Payable			5,472
0430 Contracts Payable			
0450 Short-Term Payables			
0460 Payroll Accruals and Withholdings			
0480 Unearned Revenues			
0490 Other Current Liabilities			
Total Liabilities			\$5,472
0950 Deferred Inflows of Resources			
Net Position			
0791 Net Investment in Capital Assets			
0009 Restricted Net Position (0792 – 0798)			680,593
0799 Unrestricted Net Position			
Total Net Position			\$680,593
Total Liabilities, Deferred Inflows Of Resources And Net Position			\$686,065

Amounts Expressed in Whole Dollars	<u>Private Purpose Trust</u> <u>(71)</u>	<u>Investment Trust</u> <u>(72)</u>	<u>Pension Trust</u> <u>(73)</u>	<u>Student Activity</u> <u>Custodial</u> <u>(81)</u>	<u>Other Custodial</u> <u>(89)</u>	<u>Fiduciary Component</u> <u>Units</u> <u>(98)</u>
Additions						
0091 Gifts and Contributions	10,000			716,272		
0095 Net Investment Earnings	205			1,527		
0092 Other Additions						
Deductions						
0093 Scholarships Awarded	28,500					
0094 Other Deductions				610,881		
Change in Net Position	(\$18,295)			\$106,918		
0006 Net Position – Beginning of Fiscal Year	104,854			487,116		
0007 Net Position Held in Trust for Pension Benefits						
Net Position - End of Fiscal Year	\$86,559			\$594,034		

Amounts Expressed in Whole Dollars	<u>Total Fiduciary Funds</u>
Additions	
0091 Gifts and Contributions	726,272
0095 Net Investment Earnings	1,732
0092 Other Additions	
Deductions	
0093 Scholarships Awarded	28,500
0094 Other Deductions	610,881
Change in Net Position	\$88,623
0006 Net Position – Beginning of Fiscal Year	591,970
0007 Net Position Held in Trust for Pension Benefits	
Net Position - End of Fiscal Year	\$680,593

	<u>Revenue Reported In Current Year</u>	<u>Current Year Tax Accrual</u>	<u>Prior Year Tax Accrual</u>	<u>Taxes Collected In Current Year</u>
<u>Revenue from Local Sources</u>				
6111 Current Real Estate Taxes	96,540,407.93			96,540,407.93
6112 Interim Real Estate Taxes	873,144.34			873,144.34
6113 Public Utility Realty Taxes	89,184.97			89,184.97
6114 Payments in Lieu of Current Taxes - State / Local	124,242.03			124,242.03
6143 Current Act 511 Local Services Taxes	249,829.11			249,829.11
6153 Current Act 511 Real Estate Transfer Taxes	2,231,026.75			2,231,026.75
6154 Current Act 511 Amusement Taxes	1,047,389.18			1,047,389.18
6411 Delinquent Real Estate Taxes	411,076.42			411,076.42
6500 Earnings on Investments	3,336,543.46			
6700 Revenues from LEA Activities	16,843.40			
6832 Federal IDEA Revenue Received as Pass Through	932,341.88			
6837 Federal COVID Related Revenue Received as Pass Through	257,300.00			
6910 Rentals	388,077.46			
6944 Receipts from Other LEAs in Pennsylvania - Education	15,365.17			
6991 Refunds of a Prior Year Expenditure	42,838.86			
6992 Energy Efficiency Revenues and Incentives	36,815.95			
6999 Other Revenues Not Specified Above	207,740.24			
TOTAL Revenue from Local Sources	\$106,800,167.15			\$101,566,300.73

**Revenue Reported
In Current Year**

Revenue from State Sources

7111 Basic Education Funding-Formula	4,156,699.32		
7160 Tuition for Orphans Subsidy	6,162.95		
7271 Special Education funds for School-Aged Pupils	1,546,395.95		
7311 Pupil Transportation Subsidy	315,693.99		
7312 Nonpublic and Charter School Pupil Transportation Subsidy	230,230.00		
7320 Rental and Sinking Fund Payments / Building Reimbursement Subsidy	196,200.71		
7330 Health Services (Medical, Dental, Nurse, Act 25)	80,318.02		
7340 State Property Tax Reduction Allocation	770,630.29		
7362 School Mental Health & Safety and Security Grants	161,930.28		
7505 Ready to Learn Block Grant	137,324.00		
7599 Other State Revenue Not Listed Elsewhere in the 7000 Series	25,117.00		
7810 State Share of Social Security and Medicare Taxes	2,003,675.66		
7820 State Share of Retirement Contributions	9,405,212.89		
TOTAL Revenue from State Sources	\$19,035,591.06		

**Revenue Reported
In Current Year**

Revenue from Federal Sources

8514 Title I - Improving the Academic Achievement of the Disadvantaged	734,788.70			
8515 Title II - Preparing, Training, and Recruiting High Quality Teachers and Principals	121,613.00			
8516 Title III - Language Instruction for English Learners and Immigrant Students	73,746.18			
8517 Title IV - 21st Century Schools	37,305.50			
8744 ARP ESSER - Elementary and Secondary School Emergency Relief Fund	1,588,228.74			
8747 ARP ECF - Emergency Connectivity Fund	487,600.00			
8751 ARP ESSER Learning Loss	14,178.44			
8752 ARP ESSER Summer Programs	2,835.55			
8753 ARP ESSER Afterschool Programs	16,986.06			
8810 School-Based Access Medicaid Reimbursement Program (SBAP) Reimbursements (Access)	1,000,000.00			
8820 Medical Assistance Reimbursement for Administrative Claiming (Quarterly) Program	25,734.02			
TOTAL Revenue from Federal Sources	\$4,103,016.19			

**Revenue Reported
In Current Year**

Other Financing Sources

9400 Sale of or Compensation for Loss of Fixed Assets	256,827.95			
9990 Insurance Recoveries	819,186.72			
TOTAL Other Financing Sources	\$1,076,014.67			
TOTAL FROM ALL SOURCES	\$131,014,789.07			\$101,566,300.73

LEA : 123468402 Upper Merion Area SD

Printed 11/21/2024 8:41:51 AM

	<u>General Fund (10)</u>	<u>Student Sponsored Activity Fund (21)</u>	<u>Public Purpose Trust (27)</u>	<u>Other Compt Approved (28)</u>	<u>Athletic / Activity (29)</u>	<u>Capital Reserve (690, 1850) (31)</u>
6000 Revenue from Local Sources						
6111 Current Real Estate Taxes	96,540,407.93					
6112 Interim Real Estate Taxes	873,144.34					
6113 Public Utility Realty Taxes	89,184.97					
6114 Payments in Lieu of Current Taxes - State / Local	124,242.03					
6143 Current Act 511 Local Services Taxes	249,829.11					
6153 Current Act 511 Real Estate Transfer Taxes	2,231,026.75					
6154 Current Act 511 Amusement Taxes	1,047,389.18					
6411 Delinquent Real Estate Taxes	411,076.42					
6500 Earnings on Investments	3,336,543.46					
6700 Revenues from LEA Activities	16,843.40					
6832 Federal IDEA Revenue Received as Pass Through	932,341.88					
6837 Federal COVID Related Revenue Received as Pass Through	257,300.00					
6910 Rentals	388,077.46					
6944 Receipts from Other LEAs in Pennsylvania - Education	15,365.17					
6991 Refunds of a Prior Year Expenditure	42,838.86					
6992 Energy Efficiency Revenues and Incentives	36,815.95					
6999 Other Revenues Not Specified Above	207,740.24					
6000 Total Revenue from Local Sources	\$106,800,167.15					
7000 Revenue from State Sources						
7111 Basic Education Funding-Formula	4,156,699.32					
7160 Tuition for Orphans Subsidy	6,162.95					
7271 Special Education funds for School-Aged Pupils	1,546,395.95					
7311 Pupil Transportation Subsidy	315,693.99					
7312 Nonpublic and Charter School Pupil Transportation Subsidy	230,230.00					
7320 Rental and Sinking Fund Payments / Building Reimbursement Subsidy	196,200.71					
7330 Health Services (Medical, Dental, Nurse, Act 25)	80,318.02					
7340 State Property Tax Reduction Allocation	770,630.29					
7362 School Mental Health & Safety and Security Grants	161,930.28					
7505 Ready to Learn Block Grant	137,324.00					
7599 Other State Revenue Not Listed Elsewhere in the 7000 Series	25,117.00					
7810 State Share of Social Security and Medicare Taxes	2,003,675.66					
7820 State Share of Retirement Contributions	9,405,212.89					
7000 Total Revenue from State Sources	\$19,035,591.06					

LEA : 123468402 Upper Merion Area SD

Printed 11/21/2024 8:41:51 AM

	<u>Capital Reserve</u> <u>(1431) (32)</u>	<u>Other Capital</u> <u>Projects Fund (39)</u>	<u>Debt Service (40)</u>	<u>Permanent (90)</u>	<u>Total</u>
6000 Revenue from Local Sources					
6111 Current Real Estate Taxes					96,540,407.93
6112 Interim Real Estate Taxes					873,144.34
6113 Public Utility Realty Taxes					89,184.97
6114 Payments in Lieu of Current Taxes - State / Local					124,242.03
6143 Current Act 511 Local Services Taxes					249,829.11
6153 Current Act 511 Real Estate Transfer Taxes					2,231,026.75
6154 Current Act 511 Amusement Taxes					1,047,389.18
6411 Delinquent Real Estate Taxes					411,076.42
6500 Earnings on Investments	1,102,916.23	266,548.37			4,706,008.06
6700 Revenues from LEA Activities					16,843.40
6832 Federal IDEA Revenue Received as Pass Through					932,341.88
6837 Federal COVID Related Revenue Received as Pass Through					257,300.00
6910 Rentals					388,077.46
6944 Receipts from Other LEAs in Pennsylvania - Education					15,365.17
6991 Refunds of a Prior Year Expenditure					42,838.86
6992 Energy Efficiency Revenues and Incentives					36,815.95
6999 Other Revenues Not Specified Above					207,740.24
6000 Total Revenue from Local Sources	\$1,102,916.23	\$266,548.37			\$108,169,631.75
7000 Revenue from State Sources					
7111 Basic Education Funding-Formula					4,156,699.32
7160 Tuition for Orphans Subsidy					6,162.95
7271 Special Education funds for School-Aged Pupils					1,546,395.95
7311 Pupil Transportation Subsidy					315,693.99
7312 Nonpublic and Charter School Pupil Transportation Subsidy					230,230.00
7320 Rental and Sinking Fund Payments / Building Reimbursement Subsidy					196,200.71
7330 Health Services (Medical, Dental, Nurse, Act 25)					80,318.02
7340 State Property Tax Reduction Allocation					770,630.29
7362 School Mental Health & Safety and Security Grants					161,930.28
7505 Ready to Learn Block Grant					137,324.00
7599 Other State Revenue Not Listed Elsewhere in the 7000 Series					25,117.00
7810 State Share of Social Security and Medicare Taxes					2,003,675.66
7820 State Share of Retirement Contributions					9,405,212.89
7000 Total Revenue from State Sources					\$19,035,591.06

LEA : 123468402 Upper Merion Area SD

Printed 11/21/2024 8:41:51 AM

	<u>General Fund (10)</u>	<u>Student Sponsored Activity Fund (21)</u>	<u>Public Purpose Trust (27)</u>	<u>Other Compt Approved (28)</u>	<u>Athletic / Activity (29)</u>	<u>Capital Reserve (690, 1850) (31)</u>
8000 Revenue from Federal Sources						
8514 Title I - Improving the Academic Achievement of the Disadvantaged	734,788.70					
8515 Title II - Preparing, Training, and Recruiting High Quality Teachers and Principals	121,613.00					
8516 Title III - Language Instruction for English Learners and Immigrant Students	73,746.18					
8517 Title IV - 21st Century Schools	37,305.50					
8744 ARP ESSER - Elementary and Secondary School Emergency Relief Fund	1,588,228.74					
8747 ARP ECF - Emergency Connectivity Fund	487,600.00					
8751 ARP ESSER Learning Loss	14,178.44					
8752 ARP ESSER Summer Programs	2,835.55					
8753 ARP ESSER Afterschool Programs	16,986.06					
8810 School-Based Access Medicaid Reimbursement Program (SBAP) Reimbursements (Access)	1,000,000.00					
8820 Medical Assistance Reimbursement for Administrative Claiming (Quarterly) Program	25,734.02					
8000 Total Revenue from Federal Sources	\$4,103,016.19					
9000 Other Financing Sources						
9400 Sale of or Compensation for Loss of Fixed Assets	256,827.95					
9990 Insurance Recoveries	819,186.72					
9000 Total Other Financing Sources	\$1,076,014.67					
Total From All Sources	\$131,014,789.07					

LEA : 123468402 Upper Merion Area SD

Printed 11/21/2024 8:41:51 AM

	<u>Capital Reserve</u> <u>(1431) (32)</u>	<u>Other Capital</u> <u>Projects Fund (39)</u>	<u>Debt Service (40)</u>	<u>Permanent (90)</u>	<u>Total</u>
8000 Revenue from Federal Sources					
8514 Title I - Improving the Academic Achievement of the Disadvantaged					734,788.70
8515 Title II - Preparing, Training, and Recruiting High Quality Teachers and Principals					121,613.00
8516 Title III - Language Instruction for English Learners and Immigrant Students					73,746.18
8517 Title IV - 21st Century Schools					37,305.50
8744 ARP ESSER - Elementary and Secondary School Emergency Relief Fund					1,588,228.74
8747 ARP ECF - Emergency Connectivity Fund					487,600.00
8751 ARP ESSER Learning Loss					14,178.44
8752 ARP ESSER Summer Programs					2,835.55
8753 ARP ESSER Afterschool Programs					16,986.06
8810 School-Based Access Medicaid Reimbursement Program (SBAP) Reimbursements (Access)					1,000,000.00
8820 Medical Assistance Reimbursement for Administrative Claiming (Quarterly) Program					25,734.02
8000 Total Revenue from Federal Sources					\$4,103,016.19
9000 Other Financing Sources					
9400 Sale of or Compensation for Loss of Fixed Assets					256,827.95
9990 Insurance Recoveries					819,186.72
9000 Total Other Financing Sources					\$1,076,014.67
Total From All Sources	\$1,102,916.23	\$266,548.37			\$132,384,253.67

	<u>General Fund (10)</u>	<u>Student Sponsored Activity Fund (21)</u>	<u>Public Purpose Trust (27)</u>	<u>Other Compt Approved (28)</u>	<u>Athletic / Activity (29)</u>	<u>Capital Reserve (690. 1850) (31)</u>
Revenue from Local Sources	106,800,167.15					
Revenue from State Sources	19,035,591.06					
Revenue from Federal Sources	4,103,016.19					
Other Financing Sources	1,076,014.67					
Total From All Sources	\$131,014,789.07					

LEA : 123468402 Upper Merion Area SD

Printed 11/21/2024 8:41:53 AM

	<u>Capital Reserve (1431)</u> <u>(32)</u>	<u>Other Capital Projects</u> <u>Fund (39)</u>	<u>Debt Service (40)</u>	<u>Permanent (90)</u>	<u>Total</u>
Revenue from Local Sources	1,102,916.23	266,548.37			108,169,631.75
Revenue from State Sources					19,035,591.06
Revenue from Federal Sources					4,103,016.19
Other Financing Sources					1,076,014.67
Total From All Sources	\$1,102,916.23	\$266,548.37			\$132,384,253.67

General Fund (10)

	<u>Total</u>
1000 Instruction	
100 Personnel Services – Salaries	
100 Personnel Services – Salaries	39,678,788.22
Total Personnel Services – Salaries	\$39,678,788.22
200 Personnel Services – Employee Benefits	
210 Group Insurance – Contracted Provider	381,246.72
220 Social Security Contributions	2,913,474.77
230 PSERS Retirement Contributions	13,287,488.96
250 Unemployment Compensation	46,339.36
270 Group Insurance – Self-Insurance	6,646,228.35
291 Other Retirement Plans	29,287.73
Total Personnel Services – Employee Benefits	\$23,304,065.89
300 Purchased Professional and Technical Services	
322 Professional Educational Services – Ius	1,021,104.73
323 Professional Educational Services – Other Educational Agencies	81,000.00
329 Professional Educational Services – Other	2,883,355.29
330 Other Professional Services	3,701.87
340 Technical Services	400.00
390 Other Purchased Professional and Technical Services	650.00
Total Purchased Professional and Technical Services	\$3,990,211.89
400 Purchased Property Services	
430 Repairs and Maintenance Services	7,931.50
Total Purchased Property Services	\$7,931.50
500 Other Purchased Services	
510 Student Transportation Services	214,674.85
530 Communications	4,157.57
562 Tuition To Pennsylvania Charter Schools	2,416,041.77
563 Tuition To Nonpublic Schools	10,050.00
564 Tuition To Career and Technology Centers	1,777,806.76
566 Tuition To Institutions of Higher Education and Technical Institutes	46,900.00
567 Tuition To Approved Private Schools (APS) and PA Chartered Schools for the Deaf and Blind	1,561,606.56
568 Tuition To Private Residential Rehabilitative Institutions (PRRI) [In-State] and Detention Centers	200,928.28
569 Tuition – Other	2,251,147.17
580 Travel	18,546.50
594 IU Payment By Withholding for Institutionalized Children’s Programs – Special Classes	14,098.53
596 Direct Payments To Intermediate Units	500.00
Total Other Purchased Services	\$8,516,457.99
600 Supplies	
610 General Supplies	453,451.29
630 Food	1,500.85
640 Books and Periodicals	127,112.53
650 Supplies & Fees – Technology Related	99,007.16
Total Supplies	\$681,071.83

General Fund (10)

1000 Instruction	<u>Total</u>
700 <u>Property</u>	
752 Capital Equipment – Original and Additional	35,909.65
762 Capitalized Equipment - Replacement	47,038.38
Total Property	\$82,948.03
800 <u>Other Objects</u>	
810 Dues and Fees	1,505.27
890 Miscellaneous Expenditures	1,325.56
Total Other Objects	\$2,830.83
Total 1000 Instruction	\$76,264,306.18

General Fund (10)

1100 Regular Programs – Elementary / Secondary

	<u>Elementary</u>	<u>Secondary</u>	<u>Federal</u>	<u>Total</u>
100 Personnel Services – Salaries				
100 Personnel Services – Salaries	16,486,139.11	11,549,984.13	1,254,774.69	29,290,897.93
Total Personnel Services – Salaries	\$16,486,139.11	\$11,549,984.13	\$1,254,774.69	\$29,290,897.93
200 Personnel Services – Employee Benefits				
210 Group Insurance – Contracted Provider	165,027.68	133,529.56	(1,675.46)	296,881.78
220 Social Security Contributions	1,208,665.00	847,711.23	93,182.63	2,149,558.86
230 PSERS Retirement Contributions	5,628,320.80	3,866,362.65	220,378.20	9,715,061.65
250 Unemployment Compensation	11,462.01	9,509.20		20,971.21
270 Group Insurance – Self-Insurance	2,742,669.66	1,776,175.40	185,512.21	4,704,357.27
291 Other Retirement Plans		28,100.64		28,100.64
Total Personnel Services – Employee Benefits	\$9,756,145.15	\$6,661,388.68	\$497,397.58	\$16,914,931.41
300 Purchased Professional and Technical Services				
329 Professional Educational Services – Other	454,845.96	183,336.09	6,592.00	644,774.05
340 Technical Services		400.00		400.00
390 Other Purchased Professional and Technical Services		650.00		650.00
Total Purchased Professional and Technical Services	\$454,845.96	\$184,386.09	\$6,592.00	\$645,824.05
400 Purchased Property Services				
430 Repairs and Maintenance Services	3,931.50	1,600.00		5,531.50
Total Purchased Property Services	\$3,931.50	\$1,600.00		\$5,531.50
500 Other Purchased Services				
562 Tuition To Pennsylvania Charter Schools	785,388.67	988,008.22		1,773,396.89
566 Tuition To Institutions of Higher Education and Technical Institutes		46,900.00		46,900.00
569 Tuition – Other		905,309.33		905,309.33
580 Travel	975.76	4,501.30		5,477.06
Total Other Purchased Services	\$786,364.43	\$1,944,718.85		\$2,731,083.28
600 Supplies				
610 General Supplies	250,687.07	140,284.84	644.26	391,616.17
630 Food	271.41	86.54	599.90	957.85
640 Books and Periodicals	60,390.69	23,299.87	26,122.01	109,812.57
650 Supplies & Fees – Technology Related	19,022.40	9,298.50	23,922.90	52,243.80
Total Supplies	\$330,371.57	\$172,969.75	\$51,289.07	\$554,630.39
700 Property				
752 Capital Equipment – Original and Additional	6,691.95	20,919.78		27,611.73
762 Capitalized Equipment - Replacement	44,288.43	2,749.95		47,038.38
Total Property	\$50,980.38	\$23,669.73		\$74,650.11
800 Other Objects				
810 Dues and Fees	815.27	520.00	150.00	1,485.27
890 Miscellaneous Expenditures		1,325.56		1,325.56
Total Other Objects	\$815.27	\$1,845.56	\$150.00	\$2,810.83
Total 1100 Regular Programs – Elementary / Secondary	\$27,869,593.37	\$20,540,562.79	\$1,810,203.34	\$50,220,359.50

General Fund (10)

1110 Regular Programs

	<u>Elementary</u>	<u>Secondary</u>	<u>Federal</u>	<u>Total</u>
100 Personnel Services – Salaries				
100 Personnel Services – Salaries	16,486,139.11	11,549,984.13		28,036,123.24
Total Personnel Services – Salaries	\$16,486,139.11	\$11,549,984.13		\$28,036,123.24
200 Personnel Services – Employee Benefits				
210 Group Insurance – Contracted Provider	165,027.68	133,529.56		298,557.24
220 Social Security Contributions	1,208,665.00	847,711.23		2,056,376.23
230 PSERS Retirement Contributions	5,628,320.80	3,866,362.65		9,494,683.45
250 Unemployment Compensation	11,462.01	9,509.20		20,971.21
270 Group Insurance – Self-Insurance	2,742,669.66	1,776,175.40		4,518,845.06
291 Other Retirement Plans		28,100.64		28,100.64
Total Personnel Services – Employee Benefits	\$9,756,145.15	\$6,661,388.68		\$16,417,533.83
300 Purchased Professional and Technical Services				
329 Professional Educational Services – Other	454,845.96	183,336.09		638,182.05
340 Technical Services		400.00		400.00
390 Other Purchased Professional and Technical Services		650.00		650.00
Total Purchased Professional and Technical Services	\$454,845.96	\$184,386.09		\$639,232.05
400 Purchased Property Services				
430 Repairs and Maintenance Services	3,931.50	1,600.00		5,531.50
Total Purchased Property Services	\$3,931.50	\$1,600.00		\$5,531.50
500 Other Purchased Services				
562 Tuition To Pennsylvania Charter Schools	785,388.67	988,008.22		1,773,396.89
566 Tuition To Institutions of Higher Education and Technical Institutes		46,900.00		46,900.00
569 Tuition – Other		905,309.33		905,309.33
580 Travel	975.76	4,501.30		5,477.06
Total Other Purchased Services	\$786,364.43	\$1,944,718.85		\$2,731,083.28
600 Supplies				
610 General Supplies	250,687.07	140,284.84		390,971.91
630 Food	271.41	86.54		357.95
640 Books and Periodicals	60,390.69	23,299.87		83,690.56
650 Supplies & Fees – Technology Related	19,022.40	9,298.50		28,320.90
Total Supplies	\$330,371.57	\$172,969.75		\$503,341.32
700 Property				
752 Capital Equipment – Original and Additional	6,691.95	20,919.78		27,611.73
762 Capitalized Equipment - Replacement	44,288.43	2,749.95		47,038.38
Total Property	\$50,980.38	\$23,669.73		\$74,650.11
800 Other Objects				
810 Dues and Fees	815.27	520.00		1,335.27
890 Miscellaneous Expenditures		1,325.56		1,325.56
Total Other Objects	\$815.27	\$1,845.56		\$2,660.83
Total 1110 Regular Programs	\$27,869,593.37	\$20,540,562.79		\$48,410,156.16

General Fund (10)

1190 Federally-Funded Regular Programs

100 Personnel Services – Salaries

	<u>Elementary</u>	<u>Secondary</u>	<u>Federal</u>	<u>Total</u>
100 Personnel Services – Salaries			1,254,774.69	1,254,774.69
Total Personnel Services – Salaries			\$1,254,774.69	\$1,254,774.69

200 Personnel Services – Employee Benefits

210 Group Insurance – Contracted Provider			(1,675.46)	(1,675.46)
220 Social Security Contributions			93,182.63	93,182.63
230 PSERS Retirement Contributions			220,378.20	220,378.20
270 Group Insurance – Self-Insurance			185,512.21	185,512.21
Total Personnel Services – Employee Benefits			\$497,397.58	\$497,397.58

300 Purchased Professional and Technical Services

329 Professional Educational Services – Other			6,592.00	6,592.00
Total Purchased Professional and Technical Services			\$6,592.00	\$6,592.00

600 Supplies

610 General Supplies			644.26	644.26
630 Food			599.90	599.90
640 Books and Periodicals			26,122.01	26,122.01
650 Supplies & Fees – Technology Related			23,922.90	23,922.90
Total Supplies			\$51,289.07	\$51,289.07

800 Other Objects

810 Dues and Fees			150.00	150.00
Total Other Objects			\$150.00	\$150.00

Total 1190 Federally-Funded Regular Programs

			\$1,810,203.34	\$1,810,203.34
--	--	--	-----------------------	-----------------------

General Fund (10)

1200 Special Programs – Elementary / Secondary

	<u>Elementary</u>	<u>Secondary</u>	<u>Federal</u>	<u>Total</u>
100 Personnel Services – Salaries				
100 Personnel Services – Salaries	5,152,744.74	4,257,476.30	244,975.19	9,655,196.23
Total Personnel Services – Salaries	\$5,152,744.74	\$4,257,476.30	\$244,975.19	\$9,655,196.23
200 Personnel Services – Employee Benefits				
210 Group Insurance – Contracted Provider	16,765.90	62,570.19	(372.00)	78,964.09
220 Social Security Contributions	377,137.38	314,164.09	17,696.41	708,997.88
230 PSERS Retirement Contributions	1,803,632.78	1,478,274.13	42,690.92	3,324,597.83
250 Unemployment Compensation	8,456.05	8,456.05		16,912.10
270 Group Insurance – Self-Insurance	1,026,700.94	790,275.81	47,495.68	1,864,472.43
291 Other Retirement Plans		1,187.09		1,187.09
Total Personnel Services – Employee Benefits	\$3,232,693.05	\$2,654,927.36	\$107,511.01	\$5,995,131.42
300 Purchased Professional and Technical Services				
322 Professional Educational Services – Ius	510,552.37	510,552.36		1,021,104.73
323 Professional Educational Services – Other Educational Agencies	81,000.00			81,000.00
329 Professional Educational Services – Other	704,464.19	832,830.30	683,216.75	2,220,511.24
330 Other Professional Services	206.64	3,495.23		3,701.87
Total Purchased Professional and Technical Services	\$1,296,223.20	\$1,346,877.89	\$683,216.75	\$3,326,317.84
500 Other Purchased Services				
510 Student Transportation Services		214,674.85		214,674.85
530 Communications	2,191.09	1,966.48		4,157.57
562 Tuition To Pennsylvania Charter Schools	204,361.34	438,283.54		642,644.88
567 Tuition To Approved Private Schools (APS) and PA Chartered Schools for the Deaf and Blind	128,048.88	616,547.88	817,009.80	1,561,606.56
569 Tuition – Other		1,344,487.84		1,344,487.84
580 Travel	747.95	12,321.49		13,069.44
594 IU Payment By Withholding for Institutionalized Children’s Programs – Special Classes		14,098.53		14,098.53
596 Direct Payments To Intermediate Units		500.00		500.00
Total Other Purchased Services	\$335,349.26	\$2,642,880.61	\$817,009.80	\$3,795,239.67
600 Supplies				
610 General Supplies	22,801.80	17,023.24	183.09	40,008.13
630 Food		543.00		543.00
640 Books and Periodicals	12,701.55	4,262.41	336.00	17,299.96
650 Supplies & Fees – Technology Related	22,781.68	22,781.68	1,200.00	46,763.36
Total Supplies	\$58,285.03	\$44,610.33	\$1,719.09	\$104,614.45
700 Property				
752 Capital Equipment – Original and Additional	1,666.47	1,666.46	4,964.99	8,297.92
Total Property	\$1,666.47	\$1,666.46	\$4,964.99	\$8,297.92
800 Other Objects				
810 Dues and Fees	20.00			20.00
Total Other Objects	\$20.00			\$20.00
Total 1200 Special Programs – Elementary / Secondary	\$10,076,981.75	\$10,948,438.95	\$1,859,396.83	\$22,884,817.53

General Fund (10)

1220 Sensory Support

	<u>Elementary</u>	<u>Secondary</u>	<u>Federal</u>	<u>Total</u>
100 Personnel Services – Salaries				
100 Personnel Services – Salaries	482,536.76	3,139.33		485,676.09
Total Personnel Services – Salaries	\$482,536.76	\$3,139.33		\$485,676.09
200 Personnel Services – Employee Benefits				
210 Group Insurance – Contracted Provider	8,057.01	6,560.89		14,617.90
220 Social Security Contributions	35,960.92	210.36		36,171.28
230 PSERS Retirement Contributions	167,145.39	47.37		167,192.76
250 Unemployment Compensation		8,456.05		8,456.05
270 Group Insurance – Self-Insurance	28,023.82			28,023.82
Total Personnel Services – Employee Benefits	\$239,187.14	\$15,274.67		\$254,461.81
600 Supplies				
610 General Supplies	930.16	403.86		1,334.02
Total Supplies	\$930.16	\$403.86		\$1,334.02
Total 1220 Sensory Support	\$722,654.06	\$18,817.86		\$741,471.92

General Fund (10)

1230 Emotional Support

	<u>Elementary</u>	<u>Secondary</u>	<u>Federal</u>	<u>Total</u>
100 Personnel Services – Salaries				
100 Personnel Services – Salaries	841,512.46	1,841,315.10	54,015.00	2,736,842.56
Total Personnel Services – Salaries	\$841,512.46	\$1,841,315.10	\$54,015.00	\$2,736,842.56
200 Personnel Services – Employee Benefits				
210 Group Insurance – Contracted Provider	(3,716.79)	24,632.82	(186.00)	20,730.03
220 Social Security Contributions	59,941.03	136,747.90	3,933.29	200,622.22
230 PSERS Retirement Contributions	306,002.22	628,445.24	10,130.52	944,577.98
250 Unemployment Compensation	8,456.05			8,456.05
270 Group Insurance – Self-Insurance	308,273.61	312,692.49	17,204.04	638,170.14
Total Personnel Services – Employee Benefits	\$678,956.12	\$1,102,518.45	\$31,081.85	\$1,812,556.42
300 Purchased Professional and Technical Services				
329 Professional Educational Services – Other		185,852.00		185,852.00
Total Purchased Professional and Technical Services		\$185,852.00		\$185,852.00
500 Other Purchased Services				
580 Travel	151.25	554.82		706.07
Total Other Purchased Services	\$151.25	\$554.82		\$706.07
600 Supplies				
610 General Supplies	5,249.01	4,963.13		10,212.14
Total Supplies	\$5,249.01	\$4,963.13		\$10,212.14
Total 1230 Emotional Support	\$1,525,868.84	\$3,135,203.50	\$85,096.85	\$4,746,169.19

General Fund (10)

1240 Academic Support

	<u>Elementary</u>	<u>Secondary</u>	<u>Federal</u>	<u>Total</u>
100 Personnel Services – Salaries				
100 Personnel Services – Salaries	3,414,159.10	2,272,737.54	190,389.00	5,877,285.64
Total Personnel Services – Salaries	\$3,414,159.10	\$2,272,737.54	\$190,389.00	\$5,877,285.64
200 Personnel Services – Employee Benefits				
210 Group Insurance – Contracted Provider	1,744.76	27,766.01	(186.00)	29,324.77
220 Social Security Contributions	250,590.93	166,613.73	13,720.07	430,924.73
230 PSERS Retirement Contributions	1,190,959.21	801,380.88	32,366.20	2,024,706.29
270 Group Insurance – Self-Insurance	604,191.82	468,363.80	30,291.64	1,102,847.26
291 Other Retirement Plans		1,187.09		1,187.09
Total Personnel Services – Employee Benefits	\$2,047,486.72	\$1,465,311.51	\$76,191.91	\$3,588,990.14
600 Supplies				
610 General Supplies	561.35	421.48		982.83
640 Books and Periodicals		551.93		551.93
Total Supplies	\$561.35	\$973.41		\$1,534.76
Total 1240 Academic Support	\$5,462,207.17	\$3,739,022.46	\$266,580.91	\$9,467,810.54

General Fund (10)

	<u>Elementary</u>	<u>Secondary</u>	<u>Federal</u>	<u>Total</u>
1241 Learning Support – Public				
100 Personnel Services – Salaries				
100 Personnel Services – Salaries	2,925,394.22	1,668,119.10	190,389.00	4,783,902.32
Total Personnel Services – Salaries	\$2,925,394.22	\$1,668,119.10	\$190,389.00	\$4,783,902.32
200 Personnel Services – Employee Benefits				
210 Group Insurance – Contracted Provider	(5,289.87)	28,484.25	(186.00)	23,008.38
220 Social Security Contributions	213,913.15	121,827.31	13,720.07	349,460.53
230 PSERS Retirement Contributions	1,025,737.70	593,890.41	32,366.20	1,651,994.31
270 Group Insurance – Self-Insurance	565,056.42	362,843.96	30,291.64	958,192.02
291 Other Retirement Plans		1,187.09		1,187.09
Total Personnel Services – Employee Benefits	\$1,799,417.40	\$1,108,233.02	\$76,191.91	\$2,983,842.33
600 Supplies				
610 General Supplies	561.35	421.48		982.83
640 Books and Periodicals		551.93		551.93
Total Supplies	\$561.35	\$973.41		\$1,534.76
Total 1241 Learning Support – Public	\$4,725,372.97	\$2,777,325.53	\$266,580.91	\$7,769,279.41

General Fund (10)

	<u>Elementary</u>	<u>Secondary</u>	<u>Federal</u>	<u>Total</u>
1243 Gifted Support				
100 Personnel Services – Salaries				
100 Personnel Services – Salaries	488,764.88	604,618.44		1,093,383.32
Total Personnel Services – Salaries	\$488,764.88	\$604,618.44		\$1,093,383.32
200 Personnel Services – Employee Benefits				
210 Group Insurance – Contracted Provider	7,034.63	(718.24)		6,316.39
220 Social Security Contributions	36,677.78	44,786.42		81,464.20
230 PSERS Retirement Contributions	165,221.51	207,490.47		372,711.98
270 Group Insurance – Self-Insurance	39,135.40	105,519.84		144,655.24
Total Personnel Services – Employee Benefits	\$248,069.32	\$357,078.49		\$605,147.81
Total 1243 Gifted Support	\$736,834.20	\$961,696.93		\$1,698,531.13

General Fund (10)

1260 Physical Support

100 Personnel Services – Salaries

	<u>Elementary</u>	<u>Secondary</u>	<u>Federal</u>	<u>Total</u>
100 Personnel Services – Salaries	207,657.84	79,016.00		286,673.84
Total Personnel Services – Salaries	\$207,657.84	\$79,016.00		\$286,673.84

200 Personnel Services – Employee Benefits

210 Group Insurance – Contracted Provider	(328.80)	20.76		(308.04)
220 Social Security Contributions	15,238.62	5,956.58		21,195.20
230 PSERS Retirement Contributions	70,297.65	29,638.93		99,936.58
270 Group Insurance – Self-Insurance	51,869.91	7,646.75		59,516.66
Total Personnel Services – Employee Benefits	\$137,077.38	\$43,263.02		\$180,340.40

600 Supplies

610 General Supplies	547.71	130.98		678.69
Total Supplies	\$547.71	\$130.98		\$678.69

Total 1260 Physical Support

Total 1260 Physical Support	\$345,282.93	\$122,410.00		\$467,692.93
------------------------------------	---------------------	---------------------	--	---------------------

General Fund (10)

	<u>Elementary</u>	<u>Secondary</u>	<u>Federal</u>	<u>Total</u>
1290 Special Programs - Other Support				
100 Personnel Services – Salaries				
100 Personnel Services – Salaries	206,878.58	61,268.33	571.19	268,718.10
Total Personnel Services – Salaries	\$206,878.58	\$61,268.33	\$571.19	\$268,718.10
200 Personnel Services – Employee Benefits				
210 Group Insurance – Contracted Provider	11,009.72	3,589.71		14,599.43
220 Social Security Contributions	15,405.88	4,635.52	43.05	20,084.45
230 PSERS Retirement Contributions	69,228.31	18,761.71	194.20	88,184.22
270 Group Insurance – Self-Insurance	34,341.78	1,572.77		35,914.55
Total Personnel Services – Employee Benefits	\$129,985.69	\$28,559.71	\$237.25	\$158,782.65
300 Purchased Professional and Technical Services				
322 Professional Educational Services – Ius	510,552.37	510,552.36		1,021,104.73
323 Professional Educational Services – Other Educational Agencies	81,000.00			81,000.00
329 Professional Educational Services – Other	704,464.19	646,978.30	683,216.75	2,034,659.24
330 Other Professional Services	206.64	3,495.23		3,701.87
Total Purchased Professional and Technical Services	\$1,296,223.20	\$1,161,025.89	\$683,216.75	\$3,140,465.84
500 Other Purchased Services				
510 Student Transportation Services		214,674.85		214,674.85
530 Communications	2,191.09	1,966.48		4,157.57
562 Tuition To Pennsylvania Charter Schools	204,361.34	438,283.54		642,644.88
567 Tuition To Approved Private Schools (APS) and PA Chartered Schools for the Deaf and Blind	128,048.88	616,547.88	817,009.80	1,561,606.56
569 Tuition – Other		1,344,487.84		1,344,487.84
580 Travel	596.70	11,766.67		12,363.37
594 IU Payment By Withholding for Institutionalized Children’s Programs – Special Classes		14,098.53		14,098.53
596 Direct Payments To Intermediate Units		500.00		500.00
Total Other Purchased Services	\$335,198.01	\$2,642,325.79	\$817,009.80	\$3,794,533.60
600 Supplies				
610 General Supplies	15,513.57	11,103.79	183.09	26,800.45
630 Food		543.00		543.00
640 Books and Periodicals	12,701.55	3,710.48	336.00	16,748.03
650 Supplies & Fees – Technology Related	22,781.68	22,781.68	1,200.00	46,763.36
Total Supplies	\$50,996.80	\$38,138.95	\$1,719.09	\$90,854.84
700 Property				
752 Capital Equipment – Original and Additional	1,666.47	1,666.46	4,964.99	8,297.92
Total Property	\$1,666.47	\$1,666.46	\$4,964.99	\$8,297.92
800 Other Objects				
810 Dues and Fees	20.00			20.00
Total Other Objects	\$20.00			\$20.00
Total 1290 Special Programs - Other Support	\$2,020,968.75	\$3,932,985.13	\$1,507,719.07	\$7,461,672.95

General Fund (10)

1300 Vocational Education

	<u>Elementary</u>	<u>Secondary</u>	<u>Federal</u>	<u>Total</u>
100 Personnel Services – Salaries				
100 Personnel Services – Salaries		587,542.69		587,542.69
Total Personnel Services – Salaries		\$587,542.69		\$587,542.69
200 Personnel Services – Employee Benefits				
210 Group Insurance – Contracted Provider		5,400.85		5,400.85
220 Social Security Contributions		43,906.96		43,906.96
230 PSERS Retirement Contributions		200,721.78		200,721.78
250 Unemployment Compensation		8,456.05		8,456.05
270 Group Insurance – Self-Insurance		77,398.65		77,398.65
Total Personnel Services – Employee Benefits		\$335,884.29		\$335,884.29
400 Purchased Property Services				
430 Repairs and Maintenance Services		2,400.00		2,400.00
Total Purchased Property Services		\$2,400.00		\$2,400.00
500 Other Purchased Services				
564 Tuition To Career and Technology Centers		1,777,806.76		1,777,806.76
Total Other Purchased Services		\$1,777,806.76		\$1,777,806.76
600 Supplies				
610 General Supplies		16,433.00		16,433.00
Total Supplies		\$16,433.00		\$16,433.00
Total 1300 Vocational Education		\$2,720,066.74		\$2,720,066.74

General Fund (10)

	<u>Elementary</u>	<u>Secondary</u>	<u>Federal</u>	<u>Total</u>
1400 Other Instructional Programs – Elementary / Secondary				
100 Personnel Services – Salaries				
100 Personnel Services – Salaries	5,861.71	7,345.28	131,944.38	145,151.37
Total Personnel Services – Salaries	\$5,861.71	\$7,345.28	\$131,944.38	\$145,151.37
200 Personnel Services – Employee Benefits				
220 Social Security Contributions	623.70	427.90	9,959.47	11,011.07
230 PSERS Retirement Contributions	23,715.91	2,298.11	21,093.68	47,107.70
Total Personnel Services – Employee Benefits	\$24,339.61	\$2,726.01	\$31,053.15	\$58,118.77
500 Other Purchased Services				
563 Tuition To Nonpublic Schools		10,050.00		10,050.00
568 Tuition To Private Residential Rehabilitative Institutions (PRRI) [In-State] and Detention Centers	36,590.52	164,337.76		200,928.28
569 Tuition – Other		1,350.00		1,350.00
Total Other Purchased Services	\$36,590.52	\$175,737.76		\$212,328.28
Total 1400 Other Instructional Programs – Elementary / Secondary	\$66,791.84	\$185,809.05	\$162,997.53	\$415,598.42

General Fund (10)

1420 Summer School

100 Personnel Services – Salaries

	<u>Elementary</u>	<u>Secondary</u>	<u>Federal</u>	<u>Total</u>
100 Personnel Services – Salaries	5,861.71	5,861.70	131,944.38	143,667.79
Total Personnel Services – Salaries	\$5,861.71	\$5,861.70	\$131,944.38	\$143,667.79

200 Personnel Services – Employee Benefits

220 Social Security Contributions	623.70	319.78	9,959.47	10,902.95
230 PSERS Retirement Contributions	23,715.91	1,793.69	21,093.68	46,603.28

Total Personnel Services – Employee Benefits	\$24,339.61	\$2,113.47	\$31,053.15	\$57,506.23
Total 1420 Summer School	\$30,201.32	\$7,975.17	\$162,997.53	\$201,174.02

General Fund (10)

1430 Homebound Instruction

	<u>Elementary</u>	<u>Secondary</u>	<u>Federal</u>	<u>Total</u>
100 Personnel Services – Salaries				
100 Personnel Services – Salaries		1,483.58		1,483.58
Total Personnel Services – Salaries		\$1,483.58		\$1,483.58
200 Personnel Services – Employee Benefits				
220 Social Security Contributions		108.12		108.12
230 PSERS Retirement Contributions		504.42		504.42
Total Personnel Services – Employee Benefits		\$612.54		\$612.54
500 Other Purchased Services				
563 Tuition To Nonpublic Schools		10,050.00		10,050.00
569 Tuition – Other		1,350.00		1,350.00
Total Other Purchased Services		\$11,400.00		\$11,400.00
Total 1430 Homebound Instruction		\$13,496.12		\$13,496.12

LEA : 123468402 Upper Merion Area SD

Printed 11/21/2024 8:41:57 AM

General Fund (10)

	<u>Elementary</u>	<u>Secondary</u>	<u>Federal</u>	<u>Total</u>
1440 Alternative Regular Education Programs				
500 Other Purchased Services				
568 Tuition To Private Residential Rehabilitative Institutions (PRRI) [In-State] and Detention Centers	36,590.52	164,337.76		200,928.28
Total Other Purchased Services	\$36,590.52	\$164,337.76		\$200,928.28
Total 1440 Alternative Regular Education Programs	\$36,590.52	\$164,337.76		\$200,928.28

LEA : 123468402 Upper Merion Area SD

Printed 11/21/2024 8:41:57 AM

General Fund (10)

	<u>Elementary</u>	<u>Secondary</u>	<u>Federal</u>	<u>Total</u>
1442 Alternative Education Programs				
500 Other Purchased Services				
568 Tuition To Private Residential Rehabilitative Institutions (PRRI) [In-State] and Detention Centers	36,590.52	164,337.76		200,928.28
Total Other Purchased Services	\$36,590.52	\$164,337.76		\$200,928.28
Total 1442 Alternative Education Programs	\$36,590.52	\$164,337.76		\$200,928.28

General Fund (10)

1500 Nonpublic School Programs

Elementary

Secondary

Federal

Total

300 Purchased Professional and Technical Services

329 Professional Educational Services – Other

18,070.00

18,070.00

Total Purchased Professional and Technical Services

\$18,070.00

\$18,070.00

600 Supplies

610 General Supplies

5,393.99

5,393.99

Total Supplies

\$5,393.99

\$5,393.99

Total 1500 Nonpublic School Programs

\$23,463.99

\$23,463.99

General Fund (10)

2000 Support Services

Total

100 Personnel Services – Salaries

100 Personnel Services – Salaries 14,610,810.41

Total Personnel Services – Salaries \$14,610,810.41

200 Personnel Services – Employee Benefits

210 Group Insurance – Contracted Provider 121,804.37

220 Social Security Contributions 1,053,790.55

230 PSERS Retirement Contributions 4,833,364.76

240 Tuition Reimbursement 221,429.76

250 Unemployment Compensation 193,791.62

270 Group Insurance – Self-Insurance 2,247,037.82

291 Other Retirement Plans 188,092.83

Total Personnel Services – Employee Benefits \$8,859,311.71

300 Purchased Professional and Technical Services

310 Official / Administrative Services 27,389.19

322 Professional Educational Services – Ius 782.00

329 Professional Educational Services – Other 41,935.00

330 Other Professional Services 804,199.25

340 Technical Services 366,023.66

350 Security / Safety Services 1,547.33

360 Employee Training and Development Services 174,740.98

390 Other Purchased Professional and Technical Services 118,426.27

Total Purchased Professional and Technical Services \$1,535,043.68

400 Purchased Property Services

410 Cleaning Services 146,462.79

420 Utility Services 99,437.56

430 Repairs and Maintenance Services 834,954.58

440 Rentals 91,099.36

460 Extermination Services 9,490.00

490 Other Purchased Property Services 2,496.43

Total Purchased Property Services \$1,183,940.72

500 Other Purchased Services

513 Contracted Carriers 6,031,288.61

516 Student Transportation Services From the IU 885,522.96

519 Student Transportation Services From Other Sources 28,507.51

520 Insurance – General 188,280.00

523 General Property and Liability Insurance 337,532.00

529 Other Insurance 14,587.00

530 Communications 202,100.08

549 Other Advertising/Public Relations 2,514.47

580 Travel 18,663.59

591 Services Purchased Locally 2,159.87

595 IU Payments By Withholding 78,545.93

599 Other Miscellaneous Purchased Services 49,316.88

Total Other Purchased Services \$7,839,018.90

LEA : 123468402 Upper Merion Area SD

Printed 11/21/2024 8:42:05 AM

General Fund (10)

2000 Support Services

Total

600 <u>Supplies</u>	
610 General Supplies	877,551.79
620 Energy	1,151,700.29
630 Food	7,342.77
640 Books and Periodicals	458,692.53
650 Supplies & Fees – Technology Related	535,994.62

Total Supplies	\$3,031,282.00
-----------------------	-----------------------

700 <u>Property</u>	
752 Capital Equipment – Original and Additional	582,806.54
762 Capitalized Equipment - Replacement	300,000.71

Total Property	\$882,807.25
-----------------------	---------------------

800 <u>Other Objects</u>	
810 Dues and Fees	92,605.27
820 Claims and Judgments Against the LEA	312,261.41
890 Miscellaneous Expenditures	29,630.00

Total Other Objects	\$434,496.68
----------------------------	---------------------

Total 2000 Support Services	\$38,376,711.35
------------------------------------	------------------------

General Fund (10)

	<u>Elementary</u>	<u>Secondary</u>	<u>Federal</u>	<u>Total</u>
2100 Support Services – Students				
100 Personnel Services – Salaries				
100 Personnel Services – Salaries	1,816,859.86	951,806.31	56,007.72	3,460,286.77
Total Personnel Services – Salaries	\$1,816,859.86	\$951,806.31	\$56,007.72	\$3,460,286.77
200 Personnel Services – Employee Benefits				
210 Group Insurance – Contracted Provider	31,849.47	450.53		33,353.42
220 Social Security Contributions	134,970.55	68,884.37	4,103.92	253,284.78
230 PSERS Retirement Contributions	604,572.66	321,900.09	19,042.56	1,152,049.80
250 Unemployment Compensation	16,912.10	16,912.10		42,280.25
270 Group Insurance – Self-Insurance	163,238.06	162,099.90	14,978.24	509,742.56
Total Personnel Services – Employee Benefits	\$951,542.84	\$570,246.99	\$38,124.72	\$1,990,710.81
500 Other Purchased Services				
580 Travel	291.10	806.49		1,097.59
Total Other Purchased Services	\$291.10	\$806.49		\$1,097.59
600 Supplies				
610 General Supplies	861.43	3,383.67		4,335.10
650 Supplies & Fees – Technology Related		18,673.00		18,673.00
Total Supplies	\$861.43	\$22,056.67		\$23,008.10
Total 2100 Support Services – Students	\$2,769,555.23	\$1,544,916.46	\$94,132.44	\$5,475,103.27

General Fund (10)

	<u>Elementary</u>	<u>Secondary</u>	<u>Federal</u>	<u>Total</u>
2110 Supervision of Student Services				
100 Personnel Services – Salaries				
100 Personnel Services – Salaries	234,690.18	234,690.16		469,380.34
Total Personnel Services – Salaries	\$234,690.18	\$234,690.16		\$469,380.34
200 Personnel Services – Employee Benefits				
210 Group Insurance – Contracted Provider	(22.15)	(22.14)		(44.29)
220 Social Security Contributions	16,374.13	16,374.12		32,748.25
230 PSERS Retirement Contributions	76,833.46	76,833.46		153,666.92
270 Group Insurance – Self-Insurance	19,855.46	19,855.46		39,710.92
Total Personnel Services – Employee Benefits	\$113,040.90	\$113,040.90		\$226,081.80
Total 2110 Supervision of Student Services	\$347,731.08	\$347,731.06		\$695,462.14

General Fund (10)

	<u>Elementary</u>	<u>Secondary</u>	<u>Federal</u>	<u>Total</u>
2111 Supervision of Student Services – Head of Component				
100 Personnel Services – Salaries				
100 Personnel Services – Salaries	91,580.44	91,580.43		183,160.87
Total Personnel Services – Salaries	\$91,580.44	\$91,580.43		\$183,160.87
200 Personnel Services – Employee Benefits				
210 Group Insurance – Contracted Provider	(10.80)	(10.80)		(21.60)
220 Social Security Contributions	6,161.10	6,161.09		12,322.19
230 PSERS Retirement Contributions	30,031.28	30,031.28		60,062.56
Total Personnel Services – Employee Benefits	\$36,181.58	\$36,181.57		\$72,363.15
Total 2111 Supervision of Student Services – Head of Component	\$127,762.02	\$127,762.00		\$255,524.02

General Fund (10)

	<u>Elementary</u>	<u>Secondary</u>	<u>Federal</u>	<u>Total</u>
2119 Supervision of Student Services – All Other Supervision				
100 Personnel Services – Salaries				
100 Personnel Services – Salaries	143,109.74	143,109.73		286,219.47
Total Personnel Services – Salaries	\$143,109.74	\$143,109.73		\$286,219.47
200 Personnel Services – Employee Benefits				
210 Group Insurance – Contracted Provider	(11.35)	(11.34)		(22.69)
220 Social Security Contributions	10,213.03	10,213.03		20,426.06
230 PSERS Retirement Contributions	46,802.18	46,802.18		93,604.36
270 Group Insurance – Self-Insurance	19,855.46	19,855.46		39,710.92
Total Personnel Services – Employee Benefits	\$76,859.32	\$76,859.33		\$153,718.65
Total 2119 Supervision of Student Services – All Other Supervision	\$219,969.06	\$219,969.06		\$439,938.12

General Fund (10)

	<u>Elementary</u>	<u>Secondary</u>	<u>Federal</u>	<u>Total</u>
2120 Guidance Services				
100 Personnel Services – Salaries				
100 Personnel Services – Salaries	1,018,026.29	613,449.34	56,007.72	1,687,483.35
Total Personnel Services – Salaries	\$1,018,026.29	\$613,449.34	\$56,007.72	\$1,687,483.35
200 Personnel Services – Employee Benefits				
210 Group Insurance – Contracted Provider	(467.76)	211.78		(255.98)
220 Social Security Contributions	76,242.19	44,653.43	4,103.92	124,999.54
230 PSERS Retirement Contributions	347,471.06	209,803.13	19,042.56	576,316.75
250 Unemployment Compensation	8,456.05	8,456.05		16,912.10
270 Group Insurance – Self-Insurance	101,858.14	138,507.20	14,978.24	255,343.58
Total Personnel Services – Employee Benefits	\$533,559.68	\$401,631.59	\$38,124.72	\$973,315.99
500 Other Purchased Services				
580 Travel		765.22		765.22
Total Other Purchased Services		\$765.22		\$765.22
600 Supplies				
610 General Supplies	861.43	1,263.22		2,124.65
650 Supplies & Fees – Technology Related		18,673.00		18,673.00
Total Supplies	\$861.43	\$19,936.22		\$20,797.65
Total 2120 Guidance Services	\$1,552,447.40	\$1,035,782.37	\$94,132.44	\$2,682,362.21

General Fund (10)

2130 Attendance Services

Elementary Secondary Federal Total

100 Personnel Services – Salaries

100 Personnel Services – Salaries 323,319.23

Total Personnel Services – Salaries \$323,319.23

200 Personnel Services – Employee Benefits

210 Group Insurance – Contracted Provider 480.74

220 Social Security Contributions 22,764.80

230 PSERS Retirement Contributions 101,766.53

250 Unemployment Compensation 8,456.05

270 Group Insurance – Self-Insurance 146,348.64

Total Personnel Services – Employee Benefits \$279,816.76

600 Supplies

610 General Supplies 90.00

Total Supplies \$90.00

Total 2130 Attendance Services \$603,225.99

General Fund (10)

	<u>Elementary</u>	<u>Secondary</u>	<u>Federal</u>	<u>Total</u>
2140 Psychological Services				
100 Personnel Services – Salaries				
100 Personnel Services – Salaries	336,382.24	103,666.81		440,049.05
Total Personnel Services – Salaries	\$336,382.24	\$103,666.81		\$440,049.05
200 Personnel Services – Employee Benefits				
210 Group Insurance – Contracted Provider	32,339.38	260.89		32,600.27
220 Social Security Contributions	24,930.42	7,856.82		32,787.24
230 PSERS Retirement Contributions	117,597.18	35,263.50		152,860.68
250 Unemployment Compensation	8,456.05	8,456.05		16,912.10
270 Group Insurance – Self-Insurance	41,524.46	3,737.24		45,261.70
Total Personnel Services – Employee Benefits	\$224,847.49	\$55,574.50		\$280,421.99
500 Other Purchased Services				
580 Travel	291.10	41.27		332.37
Total Other Purchased Services	\$291.10	\$41.27		\$332.37
600 Supplies				
610 General Supplies		2,120.45		2,120.45
Total Supplies		\$2,120.45		\$2,120.45
Total 2140 Psychological Services	\$561,520.83	\$161,403.03		\$722,923.86

General Fund (10)

2160 Social Work Services

Elementary

Secondary

Federal

Total

100 Personnel Services – Salaries

100 Personnel Services – Salaries

312,293.65

Total Personnel Services – Salaries

\$312,293.65

200 Personnel Services – Employee Benefits

210 Group Insurance – Contracted Provider

572.68

220 Social Security Contributions

22,561.14

230 PSERS Retirement Contributions

104,767.96

270 Group Insurance – Self-Insurance

23,077.72

Total Personnel Services – Employee Benefits

\$150,979.50

Total 2160 Social Work Services

\$463,273.15

General Fund (10)

	<u>Elementary</u>	<u>Secondary</u>	<u>Federal</u>	<u>Total</u>
2190 Other Student Services				
100 Personnel Services – Salaries				
100 Personnel Services – Salaries	227,761.15			227,761.15
Total Personnel Services – Salaries	\$227,761.15			\$227,761.15
200 Personnel Services – Employee Benefits				
220 Social Security Contributions	17,423.81			17,423.81
230 PSERS Retirement Contributions	62,670.96			62,670.96
Total Personnel Services – Employee Benefits	\$80,094.77			\$80,094.77
Total 2190 Other Student Services	\$307,855.92			\$307,855.92

General Fund (10)

	<u>Elementary</u>	<u>Secondary</u>	<u>Federal</u>	<u>Total</u>
2200 Support Services – Instructional Staff				
100 Personnel Services – Salaries				
100 Personnel Services – Salaries	858,180.15	693,548.78	556.20	1,552,285.13
Total Personnel Services – Salaries	\$858,180.15	\$693,548.78	\$556.20	\$1,552,285.13
200 Personnel Services – Employee Benefits				
210 Group Insurance – Contracted Provider	1,652.83	8,004.34		9,657.17
220 Social Security Contributions	61,772.31	48,478.72		110,251.03
230 PSERS Retirement Contributions	289,478.43	233,340.41		522,818.84
240 Tuition Reimbursement	110,887.87	91,737.89		202,625.76
250 Unemployment Compensation	12,684.08	12,684.07		25,368.15
270 Group Insurance – Self-Insurance	116,035.26	106,314.94		222,350.20
Total Personnel Services – Employee Benefits	\$592,510.78	\$500,560.37		\$1,093,071.15
300 Purchased Professional and Technical Services				
322 Professional Educational Services – Ius	391.00	391.00		782.00
329 Professional Educational Services – Other	10,424.50	21,824.50		32,249.00
330 Other Professional Services	9,076.43	9,076.42		18,152.85
340 Technical Services	9,358.03	9,358.02		18,716.05
360 Employee Training and Development Services	75,457.30	60,331.68	23,776.50	159,565.48
390 Other Purchased Professional and Technical Services	10,144.04	10,144.04		20,288.08
Total Purchased Professional and Technical Services	\$114,851.30	\$111,125.66	\$23,776.50	\$249,753.46
400 Purchased Property Services				
430 Repairs and Maintenance Services	550.12	2,158.04		2,708.16
Total Purchased Property Services	\$550.12	\$2,158.04		\$2,708.16
500 Other Purchased Services				
530 Communications	2,026.98	2,026.98		4,053.96
580 Travel	2,176.52	2,176.52		4,353.04
Total Other Purchased Services	\$4,203.50	\$4,203.50		\$8,407.00
600 Supplies				
610 General Supplies	103,287.15	105,127.08	9,807.82	218,222.05
630 Food	3,111.86	224.00		3,335.86
640 Books and Periodicals	238,681.98	219,510.23		458,192.21
650 Supplies & Fees – Technology Related	215,785.00	232,513.64	24,192.00	472,490.64
Total Supplies	\$560,865.99	\$557,374.95	\$33,999.82	\$1,152,240.76
700 Property				
752 Capital Equipment – Original and Additional	28,482.73	25,770.81		54,253.54
762 Capitalized Equipment - Replacement	106,243.13	110,402.13		216,645.26
Total Property	\$134,725.86	\$136,172.94		\$270,898.80
800 Other Objects				
810 Dues and Fees	6,155.00	8,569.73		14,724.73
890 Miscellaneous Expenditures	14,815.00	14,815.00		29,630.00
Total Other Objects	\$20,970.00	\$23,384.73		\$44,354.73
Total 2200 Support Services – Instructional Staff	\$2,286,857.70	\$2,028,528.97	\$58,332.52	\$4,373,719.19

General Fund (10)

	<u>Elementary</u>	<u>Secondary</u>	<u>Federal</u>	<u>Total</u>
2220 Technology Support Services				
400 <u>Purchased Property Services</u>				
430 Repairs and Maintenance Services	550.12	550.12		1,100.24
Total Purchased Property Services	\$550.12	\$550.12		\$1,100.24
600 <u>Supplies</u>				
610 General Supplies	3,612.35	3,612.34		7,224.69
650 Supplies & Fees – Technology Related	7,221.96	7,221.95		14,443.91
Total Supplies	\$10,834.31	\$10,834.29		\$21,668.60
700 <u>Property</u>				
752 Capital Equipment – Original and Additional	1,598.50	1,598.50		3,197.00
762 Capitalized Equipment - Replacement	45,521.82	45,521.82		91,043.64
Total Property	\$47,120.32	\$47,120.32		\$94,240.64
800 <u>Other Objects</u>				
810 Dues and Fees	72.50	72.50		145.00
Total Other Objects	\$72.50	\$72.50		\$145.00
Total 2220 Technology Support Services	\$58,577.25	\$58,577.23		\$117,154.48

General Fund (10)

	<u>Elementary</u>	<u>Secondary</u>	<u>Federal</u>	<u>Total</u>
2230 Educational Television Services				
100 Personnel Services – Salaries				
100 Personnel Services – Salaries		102,168.20		102,168.20
Total Personnel Services – Salaries		\$102,168.20		\$102,168.20
200 Personnel Services – Employee Benefits				
210 Group Insurance – Contracted Provider		105.06		105.06
220 Social Security Contributions		7,558.41		7,558.41
230 PSERS Retirement Contributions		34,739.49		34,739.49
270 Group Insurance – Self-Insurance		18,957.16		18,957.16
Total Personnel Services – Employee Benefits		\$61,360.12		\$61,360.12
300 Purchased Professional and Technical Services				
329 Professional Educational Services – Other		11,400.00		11,400.00
Total Purchased Professional and Technical Services		\$11,400.00		\$11,400.00
400 Purchased Property Services				
430 Repairs and Maintenance Services		1,607.92		1,607.92
Total Purchased Property Services		\$1,607.92		\$1,607.92
600 Supplies				
610 General Supplies		2,728.48		2,728.48
Total Supplies		\$2,728.48		\$2,728.48
700 Property				
762 Capitalized Equipment - Replacement		10,154.00		10,154.00
Total Property		\$10,154.00		\$10,154.00
800 Other Objects				
810 Dues and Fees		4,102.39		4,102.39
Total Other Objects		\$4,102.39		\$4,102.39
Total 2230 Educational Television Services		\$193,521.11		\$193,521.11

General Fund (10)

	<u>Elementary</u>	<u>Secondary</u>	<u>Federal</u>	<u>Total</u>
2250 School Library Services				
100 Personnel Services – Salaries				
100 Personnel Services – Salaries	509,187.67	231,371.47		740,559.14
Total Personnel Services – Salaries	\$509,187.67	\$231,371.47		\$740,559.14
200 Personnel Services – Employee Benefits				
210 Group Insurance – Contracted Provider	115.71	6,362.19		6,477.90
220 Social Security Contributions	37,845.33	16,167.15		54,012.48
230 PSERS Retirement Contributions	173,123.52	78,553.80		251,677.32
250 Unemployment Compensation	8,456.05	8,456.05		16,912.10
270 Group Insurance – Self-Insurance	71,851.67	43,174.20		115,025.87
Total Personnel Services – Employee Benefits	\$291,392.28	\$152,713.39		\$444,105.67
300 Purchased Professional and Technical Services				
340 Technical Services	253.00	253.00		506.00
Total Purchased Professional and Technical Services	\$253.00	\$253.00		\$506.00
600 Supplies				
610 General Supplies	6,808.03	5,919.50		12,727.53
640 Books and Periodicals	32,949.70	13,777.96		46,727.66
650 Supplies & Fees – Technology Related	51,720.38	68,449.03		120,169.41
Total Supplies	\$91,478.11	\$88,146.49		\$179,624.60
700 Property				
762 Capitalized Equipment - Replacement	54,726.31	54,726.31		109,452.62
Total Property	\$54,726.31	\$54,726.31		\$109,452.62
Total 2250 School Library Services	\$947,037.37	\$527,210.66		\$1,474,248.03

General Fund (10)

	<u>Elementary</u>	<u>Secondary</u>	<u>Federal</u>	<u>Total</u>
2260 Instruction and Curriculum Development Services				
100 Personnel Services – Salaries				
100 Personnel Services – Salaries	336,199.83	336,199.81		672,399.64
Total Personnel Services – Salaries	\$336,199.83	\$336,199.81		\$672,399.64
200 Personnel Services – Employee Benefits				
210 Group Insurance – Contracted Provider	1,537.12	1,537.09		3,074.21
220 Social Security Contributions	22,995.82	22,995.81		45,991.63
230 PSERS Retirement Contributions	111,873.67	111,873.67		223,747.34
250 Unemployment Compensation	4,228.03	4,228.02		8,456.05
270 Group Insurance – Self-Insurance	44,183.59	44,183.58		88,367.17
Total Personnel Services – Employee Benefits	\$184,818.23	\$184,818.17		\$369,636.40
300 Purchased Professional and Technical Services				
329 Professional Educational Services – Other	10,424.50	10,424.50		20,849.00
330 Other Professional Services	9,076.43	9,076.42		18,152.85
340 Technical Services	9,105.03	9,105.02		18,210.05
390 Other Purchased Professional and Technical Services	10,144.04	10,144.04		20,288.08
Total Purchased Professional and Technical Services	\$38,750.00	\$38,749.98		\$77,499.98
500 Other Purchased Services				
530 Communications	2,026.98	2,026.98		4,053.96
580 Travel	1,226.37	1,226.37		2,452.74
Total Other Purchased Services	\$3,253.35	\$3,253.35		\$6,506.70
600 Supplies				
610 General Supplies	92,547.89	92,547.88	9,807.82	194,903.59
630 Food	2,887.86			2,887.86
640 Books and Periodicals	204,726.26	204,726.25		409,452.51
650 Supplies & Fees – Technology Related	156,842.66	156,842.66	24,192.00	337,877.32
Total Supplies	\$457,004.67	\$454,116.79	\$33,999.82	\$945,121.28
700 Property				
752 Capital Equipment – Original and Additional	26,884.23	24,172.31		51,056.54
762 Capitalized Equipment - Replacement	5,995.00			5,995.00
Total Property	\$32,879.23	\$24,172.31		\$57,051.54
800 Other Objects				
810 Dues and Fees	1,842.00	154.34		1,996.34
890 Miscellaneous Expenditures	14,815.00	14,815.00		29,630.00
Total Other Objects	\$16,657.00	\$14,969.34		\$31,626.34
Total 2260 Instruction and Curriculum Development Services	\$1,069,562.31	\$1,056,279.75	\$33,999.82	\$2,159,841.88

General Fund (10)

2270 Instructional Staff Professional Development Services	<u>Elementary</u>	<u>Secondary</u>	<u>Federal</u>	<u>Total</u>
100 Personnel Services – Salaries				
100 Personnel Services – Salaries	316.73	316.72	556.20	1,189.65
Total Personnel Services – Salaries	\$316.73	\$316.72	\$556.20	\$1,189.65
200 Personnel Services – Employee Benefits				
220 Social Security Contributions	23.96	23.95		47.91
230 PSERS Retirement Contributions	107.69	107.69		215.38
240 Tuition Reimbursement	110,887.87	91,737.89		202,625.76
Total Personnel Services – Employee Benefits	\$111,019.52	\$91,869.53		\$202,889.05
300 Purchased Professional and Technical Services				
322 Professional Educational Services – lus	391.00	391.00		782.00
360 Employee Training and Development Services	75,457.30	60,331.68	23,776.50	159,565.48
Total Purchased Professional and Technical Services	\$75,848.30	\$60,722.68	\$23,776.50	\$160,347.48
500 Other Purchased Services				
580 Travel	950.15	950.15		1,900.30
Total Other Purchased Services	\$950.15	\$950.15		\$1,900.30
600 Supplies				
610 General Supplies	318.88	318.88		637.76
630 Food	224.00	224.00		448.00
640 Books and Periodicals	1,006.02	1,006.02		2,012.04
Total Supplies	\$1,548.90	\$1,548.90		\$3,097.80
800 Other Objects				
810 Dues and Fees	4,240.50	4,240.50		8,481.00
Total Other Objects	\$4,240.50	\$4,240.50		\$8,481.00
Total 2270 Instructional Staff Professional Development Services	\$193,924.10	\$159,648.48	\$24,332.70	\$377,905.28

General Fund (10)

	<u>Elementary</u>	<u>Secondary</u>	<u>Federal</u>	<u>Total</u>
2290 Other Instructional Staff Services				
100 Personnel Services – Salaries				
100 Personnel Services – Salaries	12,475.92	23,492.58		35,968.50
Total Personnel Services – Salaries	\$12,475.92	\$23,492.58		\$35,968.50
200 Personnel Services – Employee Benefits				
220 Social Security Contributions	907.20	1,733.40		2,640.60
230 PSERS Retirement Contributions	4,373.55	8,065.76		12,439.31
Total Personnel Services – Employee Benefits	\$5,280.75	\$9,799.16		\$15,079.91
Total 2290 Other Instructional Staff Services	\$17,756.67	\$33,291.74		\$51,048.41

General Fund (10)

	<u>Elementary</u>	<u>Secondary</u>	<u>Federal</u>	<u>Total</u>
2300 Support Services – Administration				
100 Personnel Services – Salaries				
100 Personnel Services – Salaries	1,414,813.63	750,653.93	133,500.00	3,090,608.89
Total Personnel Services – Salaries	\$1,414,813.63	\$750,653.93	\$133,500.00	\$3,090,608.89
200 Personnel Services – Employee Benefits				
210 Group Insurance – Contracted Provider	17,782.30	17,347.18	(201.33)	37,989.46
220 Social Security Contributions	102,442.76	52,655.68	9,879.23	217,306.46
230 PSERS Retirement Contributions	463,332.75	270,677.97	22,100.00	992,750.67
250 Unemployment Compensation	8,456.05	8,456.05		25,368.15
270 Group Insurance – Self-Insurance	203,785.42	155,385.67	16,664.35	475,904.96
291 Other Retirement Plans	31,814.25	5,250.00		117,544.51
Total Personnel Services – Employee Benefits	\$827,613.53	\$509,772.55	\$48,442.25	\$1,866,864.21
300 Purchased Professional and Technical Services				
329 Professional Educational Services – Other	350.00			350.00
330 Other Professional Services				468,596.64
340 Technical Services				44,590.77
390 Other Purchased Professional and Technical Services				67,074.89
Total Purchased Professional and Technical Services	\$350.00			\$580,612.30
400 Purchased Property Services				
440 Rentals		39,541.59		39,541.59
Total Purchased Property Services		\$39,541.59		\$39,541.59
500 Other Purchased Services				
520 Insurance – General				188,280.00
530 Communications	1,078.09	1,078.09		2,156.18
549 Other Advertising/Public Relations				1,943.30
580 Travel	358.06	718.50		5,245.95
599 Other Miscellaneous Purchased Services		33,165.16		33,165.16
Total Other Purchased Services	\$1,436.15	\$34,961.75		\$230,790.59
600 Supplies				
610 General Supplies	335.74	1,875.64		28,148.97
630 Food				3,595.23
640 Books and Periodicals	420.84	79.48		500.32
650 Supplies & Fees – Technology Related				17,429.84
Total Supplies	\$756.58	\$1,955.12		\$49,674.36
700 Property				
752 Capital Equipment – Original and Additional				3,896.00
Total Property				\$3,896.00
800 Other Objects				
810 Dues and Fees	2,811.50	3,789.50		40,668.20
820 Claims and Judgments Against the LEA				312,261.41
Total Other Objects	\$2,811.50	\$3,789.50		\$352,929.61
Total 2300 Support Services – Administration	\$2,247,781.39	\$1,340,674.44	\$181,942.25	\$6,214,917.55

General Fund (10)

	<u>Elementary</u>	<u>Secondary</u>	<u>Federal</u>	<u>Total</u>
2310 Board Services				
100 Personnel Services – Salaries				
100 Personnel Services – Salaries				5,485.68
Total Personnel Services – Salaries				\$5,485.68
200 Personnel Services – Employee Benefits				
220 Social Security Contributions				388.23
230 PSERS Retirement Contributions				1,865.04
Total Personnel Services – Employee Benefits				\$2,253.27
300 Purchased Professional and Technical Services				
330 Other Professional Services				38,707.66
Total Purchased Professional and Technical Services				\$38,707.66
500 Other Purchased Services				
520 Insurance – General				188,280.00
549 Other Advertising/Public Relations				935.30
580 Travel				963.45
Total Other Purchased Services				\$190,178.75
600 Supplies				
610 General Supplies				2,127.19
630 Food				3,401.38
650 Supplies & Fees – Technology Related				15,075.43
Total Supplies				\$20,604.00
800 Other Objects				
810 Dues and Fees				19,180.00
820 Claims and Judgments Against the LEA				312,261.41
Total Other Objects				\$331,441.41
Total 2310 Board Services				\$588,670.77

General Fund (10)

2330 Tax Assessment and Collection Services	<u>Elementary</u>	<u>Secondary</u>	<u>Federal</u>	<u>Total</u>
100 Personnel Services – Salaries				
100 Personnel Services – Salaries				69,963.59
Total Personnel Services – Salaries				\$69,963.59
200 Personnel Services – Employee Benefits				
220 Social Security Contributions				5,351.75
Total Personnel Services – Employee Benefits				\$5,351.75
300 Purchased Professional and Technical Services				
390 Other Purchased Professional and Technical Services				67,074.89
Total Purchased Professional and Technical Services				\$67,074.89
600 Supplies				
610 General Supplies				14,748.09
Total Supplies				\$14,748.09
Total 2330 Tax Assessment and Collection Services				\$157,138.32

General Fund (10)

2340 Staff Relations and Negotiations Services

Elementary

Secondary

Federal

Total

100 Personnel Services – Salaries

100 Personnel Services – Salaries

345,179.35

Total Personnel Services – Salaries

\$345,179.35

200 Personnel Services – Employee Benefits

210 Group Insurance – Contracted Provider

847.85

220 Social Security Contributions

25,625.14

230 PSERS Retirement Contributions

119,769.55

270 Group Insurance – Self-Insurance

77,096.98

291 Other Retirement Plans

1,750.00

Total Personnel Services – Employee Benefits

\$225,089.52

300 Purchased Professional and Technical Services

330 Other Professional Services

12,215.00

340 Technical Services

44,590.77

Total Purchased Professional and Technical Services

\$56,805.77

500 Other Purchased Services

549 Other Advertising/Public Relations

1,008.00

Total Other Purchased Services

\$1,008.00

800 Other Objects

810 Dues and Fees

1,423.00

Total Other Objects

\$1,423.00

Total 2340 Staff Relations and Negotiations Services

\$629,505.64

General Fund (10)

2350 Legal and Accounting Services

Elementary

Secondary

Federal

Total

300 Purchased Professional and Technical Services

330 Other Professional Services

417,673.98

Total Purchased Professional and Technical Services

\$417,673.98

Total 2350 Legal and Accounting Services

\$417,673.98

General Fund (10)

	<u>Elementary</u>	<u>Secondary</u>	<u>Federal</u>	<u>Total</u>
2360 Office of the Superintendent / Executive Director Services				
100 Personnel Services – Salaries				
100 Personnel Services – Salaries				371,012.71
Total Personnel Services – Salaries				\$371,012.71
200 Personnel Services – Employee Benefits				
210 Group Insurance – Contracted Provider				2,213.46
220 Social Security Contributions				20,963.67
230 PSERS Retirement Contributions				115,005.36
250 Unemployment Compensation				8,456.05
270 Group Insurance – Self-Insurance				22,972.54
291 Other Retirement Plans				78,730.26
Total Personnel Services – Employee Benefits				\$248,341.34
500 Other Purchased Services				
530 Communications	1,078.09	1,078.09		2,156.18
580 Travel				3,205.94
Total Other Purchased Services	\$1,078.09	\$1,078.09		\$5,362.12
600 Supplies				
610 General Supplies				8,613.20
630 Food				193.85
650 Supplies & Fees – Technology Related				2,354.41
Total Supplies				\$11,161.46
700 Property				
752 Capital Equipment – Original and Additional				3,896.00
Total Property				\$3,896.00
800 Other Objects				
810 Dues and Fees				13,414.20
Total Other Objects				\$13,414.20
Total 2360 Office of the Superintendent / Executive Director Services	\$1,078.09	\$1,078.09		\$653,187.83

LEA : 123468402 Upper Merion Area SD

Printed 11/21/2024 8:42:05 AM

General Fund (10)

2370 Community Relations Services

Elementary

Secondary

Federal

Total

600 Supplies

610 General Supplies

449.11

Total Supplies

\$449.11

800 Other Objects

810 Dues and Fees

50.00

Total Other Objects

\$50.00

Total 2370 Community Relations Services

\$499.11

General Fund (10)

2380 Office of the Principal Services

	<u>Elementary</u>	<u>Secondary</u>	<u>Federal</u>	<u>Total</u>
100 Personnel Services – Salaries				
100 Personnel Services – Salaries	1,414,813.63	750,653.93	133,500.00	2,298,967.56
Total Personnel Services – Salaries	\$1,414,813.63	\$750,653.93	\$133,500.00	\$2,298,967.56
200 Personnel Services – Employee Benefits				
210 Group Insurance – Contracted Provider	17,782.30	17,347.18	(201.33)	34,928.15
220 Social Security Contributions	102,442.76	52,655.68	9,879.23	164,977.67
230 PSERS Retirement Contributions	463,332.75	270,677.97	22,100.00	756,110.72
250 Unemployment Compensation	8,456.05	8,456.05		16,912.10
270 Group Insurance – Self-Insurance	203,785.42	155,385.67	16,664.35	375,835.44
291 Other Retirement Plans	31,814.25	5,250.00		37,064.25
Total Personnel Services – Employee Benefits	\$827,613.53	\$509,772.55	\$48,442.25	\$1,385,828.33
300 Purchased Professional and Technical Services				
329 Professional Educational Services – Other	350.00			350.00
Total Purchased Professional and Technical Services	\$350.00			\$350.00
400 Purchased Property Services				
440 Rentals		39,541.59		39,541.59
Total Purchased Property Services		\$39,541.59		\$39,541.59
500 Other Purchased Services				
580 Travel	358.06	718.50		1,076.56
599 Other Miscellaneous Purchased Services		33,165.16		33,165.16
Total Other Purchased Services	\$358.06	\$33,883.66		\$34,241.72
600 Supplies				
610 General Supplies	335.74	1,875.64		2,211.38
640 Books and Periodicals	420.84	79.48		500.32
Total Supplies	\$756.58	\$1,955.12		\$2,711.70
800 Other Objects				
810 Dues and Fees	2,811.50	3,789.50		6,601.00
Total Other Objects	\$2,811.50	\$3,789.50		\$6,601.00
Total 2380 Office of the Principal Services	\$2,246,703.30	\$1,339,596.35	\$181,942.25	\$3,768,241.90

General Fund (10)

	<u>Elementary</u>	<u>Secondary</u>	<u>Federal</u>	<u>Total</u>
2400 Support Services – Pupil Health				
100 Personnel Services – Salaries				
100 Personnel Services – Salaries				676,970.45
Total Personnel Services – Salaries				\$676,970.45
200 Personnel Services – Employee Benefits				
210 Group Insurance – Contracted Provider				27,861.79
220 Social Security Contributions				49,963.85
230 PSERS Retirement Contributions				233,837.74
250 Unemployment Compensation				8,456.05
270 Group Insurance – Self-Insurance				111,989.04
Total Personnel Services – Employee Benefits				\$432,108.47
300 Purchased Professional and Technical Services				
329 Professional Educational Services – Other				7,936.00
330 Other Professional Services				271,356.34
Total Purchased Professional and Technical Services				\$279,292.34
500 Other Purchased Services				
580 Travel				1,190.24
591 Services Purchased Locally				2,159.87
Total Other Purchased Services				\$3,350.11
600 Supplies				
610 General Supplies				13,756.18
630 Food				361.43
Total Supplies				\$14,117.61
700 Property				
752 Capital Equipment – Original and Additional				6,484.00
Total Property				\$6,484.00
800 Other Objects				
810 Dues and Fees				25.00
Total Other Objects				\$25.00
Total 2400 Support Services – Pupil Health				\$1,412,347.98

General Fund (10)

2420 Medical Services

	<u>Elementary</u>	<u>Secondary</u>	<u>Federal</u>	<u>Total</u>
100 Personnel Services – Salaries				
100 Personnel Services – Salaries				615,343.12
Total Personnel Services – Salaries				\$615,343.12
200 Personnel Services – Employee Benefits				
210 Group Insurance – Contracted Provider				27,861.79
220 Social Security Contributions				45,248.95
230 PSERS Retirement Contributions				212,630.51
250 Unemployment Compensation				8,456.05
270 Group Insurance – Self-Insurance				111,989.04
Total Personnel Services – Employee Benefits				\$406,186.34
300 Purchased Professional and Technical Services				
329 Professional Educational Services – Other				5,376.00
330 Other Professional Services				271,356.34
Total Purchased Professional and Technical Services				\$276,732.34
500 Other Purchased Services				
580 Travel				693.03
Total Other Purchased Services				\$693.03
600 Supplies				
610 General Supplies				12,774.54
Total Supplies				\$12,774.54
700 Property				
752 Capital Equipment – Original and Additional				6,484.00
Total Property				\$6,484.00
Total 2420 Medical Services				\$1,318,213.37

General Fund (10)

2430 Dental Services

Elementary

Secondary

Federal

Total

100 Personnel Services – Salaries

100 Personnel Services – Salaries

7,798.50

Total Personnel Services – Salaries

\$7,798.50

200 Personnel Services – Employee Benefits

220 Social Security Contributions

596.52

230 PSERS Retirement Contributions

2,827.08

Total Personnel Services – Employee Benefits

\$3,423.60

Total 2430 Dental Services

\$11,222.10

General Fund (10)

	<u>Elementary</u>	<u>Secondary</u>	<u>Federal</u>	<u>Total</u>
2490 Other Health Services				
100 Personnel Services – Salaries				
100 Personnel Services – Salaries				53,828.83
Total Personnel Services – Salaries				\$53,828.83
200 Personnel Services – Employee Benefits				
220 Social Security Contributions				4,118.38
230 PSERS Retirement Contributions				18,380.15
Total Personnel Services – Employee Benefits				\$22,498.53
300 Purchased Professional and Technical Services				
329 Professional Educational Services – Other				2,560.00
Total Purchased Professional and Technical Services				\$2,560.00
500 Other Purchased Services				
580 Travel				497.21
591 Services Purchased Locally				2,159.87
Total Other Purchased Services				\$2,657.08
600 Supplies				
610 General Supplies				981.64
630 Food				361.43
Total Supplies				\$1,343.07
800 Other Objects				
810 Dues and Fees				25.00
Total Other Objects				\$25.00
Total 2490 Other Health Services				\$82,912.51

General Fund (10)

	<u>Elementary</u>	<u>Secondary</u>	<u>Federal</u>	<u>Total</u>
2500 Support Services – Business				
100 Personnel Services – Salaries				
100 Personnel Services – Salaries				621,586.52
Total Personnel Services – Salaries				\$621,586.52
200 Personnel Services – Employee Benefits				
210 Group Insurance – Contracted Provider				1,821.76
220 Social Security Contributions				41,784.23
230 PSERS Retirement Contributions				209,364.40
250 Unemployment Compensation				8,456.05
270 Group Insurance – Self-Insurance				130,371.36
291 Other Retirement Plans				10,762.50
Total Personnel Services – Employee Benefits				\$402,560.30
300 Purchased Professional and Technical Services				
330 Other Professional Services				9,868.00
340 Technical Services				43,001.96
390 Other Purchased Professional and Technical Services				31,063.30
Total Purchased Professional and Technical Services				\$83,933.26
400 Purchased Property Services				
440 Rentals				9,123.34
Total Purchased Property Services				\$9,123.34
500 Other Purchased Services				
530 Communications				41,151.38
549 Other Advertising/Public Relations				571.17
580 Travel				808.24
Total Other Purchased Services				\$42,530.79
600 Supplies				
610 General Supplies				4,048.24
Total Supplies				\$4,048.24
800 Other Objects				
810 Dues and Fees				36,130.49
Total Other Objects				\$36,130.49
Total 2500 Support Services – Business				\$1,199,912.94

General Fund (10)

2510 Fiscal Services

Elementary Secondary Federal Total

100	<u>Personnel Services – Salaries</u>			
	100 Personnel Services – Salaries			491,670.16
Total Personnel Services – Salaries				\$491,670.16
200	<u>Personnel Services – Employee Benefits</u>			
	210 Group Insurance – Contracted Provider			3,255.61
	220 Social Security Contributions			32,409.89
	230 PSERS Retirement Contributions			165,175.99
	250 Unemployment Compensation			8,456.05
	270 Group Insurance – Self-Insurance			94,762.45
	291 Other Retirement Plans			10,762.50
Total Personnel Services – Employee Benefits				\$314,822.49
300	<u>Purchased Professional and Technical Services</u>			
	340 Technical Services			43,001.96
	390 Other Purchased Professional and Technical Services			31,063.30
Total Purchased Professional and Technical Services				\$74,065.26
400	<u>Purchased Property Services</u>			
	440 Rentals			9,123.34
Total Purchased Property Services				\$9,123.34
500	<u>Other Purchased Services</u>			
	530 Communications			41,151.38
	549 Other Advertising/Public Relations			571.17
	580 Travel			808.24
Total Other Purchased Services				\$42,530.79
600	<u>Supplies</u>			
	610 General Supplies			4,048.24
Total Supplies				\$4,048.24
800	<u>Other Objects</u>			
	810 Dues and Fees			36,130.49
Total Other Objects				\$36,130.49
Total 2510 Fiscal Services				\$972,390.77

General Fund (10)

	<u>Elementary</u>	<u>Secondary</u>	<u>Federal</u>	<u>Total</u>
2511 Supervision of Fiscal Services - Head of Component				
100 Personnel Services – Salaries				
100 Personnel Services – Salaries				221,045.16
Total Personnel Services – Salaries				\$221,045.16
200 Personnel Services – Employee Benefits				
210 Group Insurance – Contracted Provider				1,729.34
220 Social Security Contributions				13,256.45
230 PSERS Retirement Contributions				73,185.03
270 Group Insurance – Self-Insurance				19,383.15
291 Other Retirement Plans				10,762.50
Total Personnel Services – Employee Benefits				\$118,316.47
500 Other Purchased Services				
580 Travel				711.62
Total Other Purchased Services				\$711.62
800 Other Objects				
810 Dues and Fees				420.00
Total Other Objects				\$420.00
Total 2511 Supervision of Fiscal Services - Head of Component				\$340,493.25

General Fund (10)

2514 Payroll Services

Elementary

Secondary

Federal

Total

100 Personnel Services – Salaries

100 Personnel Services – Salaries

75,000.00

Total Personnel Services – Salaries

\$75,000.00

200 Personnel Services – Employee Benefits

210 Group Insurance – Contracted Provider

(198.81)

220 Social Security Contributions

5,152.11

230 PSERS Retirement Contributions

25,499.98

270 Group Insurance – Self-Insurance

18,608.89

Total Personnel Services – Employee Benefits

\$49,062.17

Total 2514 Payroll Services

\$124,062.17

General Fund (10)

	<u>Elementary</u>	<u>Secondary</u>	<u>Federal</u>	<u>Total</u>
2515 Financial Accounting Services				
100 Personnel Services – Salaries				
100 Personnel Services – Salaries				195,625.00
Total Personnel Services – Salaries				\$195,625.00
200 Personnel Services – Employee Benefits				
210 Group Insurance – Contracted Provider				1,725.08
220 Social Security Contributions				14,001.33
230 PSERS Retirement Contributions				66,490.98
250 Unemployment Compensation				8,456.05
270 Group Insurance – Self-Insurance				56,770.41
Total Personnel Services – Employee Benefits				\$147,443.85
300 Purchased Professional and Technical Services				
340 Technical Services				43,001.96
390 Other Purchased Professional and Technical Services				31,063.30
Total Purchased Professional and Technical Services				\$74,065.26
400 Purchased Property Services				
440 Rentals				9,123.34
Total Purchased Property Services				\$9,123.34
500 Other Purchased Services				
530 Communications				41,151.38
549 Other Advertising/Public Relations				571.17
580 Travel				96.62
Total Other Purchased Services				\$41,819.17
600 Supplies				
610 General Supplies				4,048.24
Total Supplies				\$4,048.24
800 Other Objects				
810 Dues and Fees				35,710.49
Total Other Objects				\$35,710.49
Total 2515 Financial Accounting Services				\$507,835.35

General Fund (10)

2520 Purchasing Services

Elementary

Secondary

Federal

Total

100 Personnel Services – Salaries

100 Personnel Services – Salaries

47,215.00

Total Personnel Services – Salaries

\$47,215.00

200 Personnel Services – Employee Benefits

210 Group Insurance – Contracted Provider

(561.91)

220 Social Security Contributions

3,380.71

230 PSERS Retirement Contributions

16,053.11

270 Group Insurance – Self-Insurance

17,000.02

Total Personnel Services – Employee Benefits

\$35,871.93

Total 2520 Purchasing Services

\$83,086.93

General Fund (10)

2530 Warehousing and Distributing Services

Elementary

Secondary

Federal

Total

100 Personnel Services – Salaries

100 Personnel Services – Salaries

82,701.36

Total Personnel Services – Salaries

\$82,701.36

200 Personnel Services – Employee Benefits

210 Group Insurance – Contracted Provider

(871.94)

220 Social Security Contributions

5,993.63

230 PSERS Retirement Contributions

28,135.30

270 Group Insurance – Self-Insurance

18,608.89

Total Personnel Services – Employee Benefits

\$51,865.88

Total 2530 Warehousing and Distributing Services

\$134,567.24

General Fund (10)

2590 Other Support Services – Business

Elementary

Secondary

Federal

Total

300 Purchased Professional and Technical Services

330 Other Professional Services

9,868.00

Total Purchased Professional and Technical Services

\$9,868.00

Total 2590 Other Support Services – Business

\$9,868.00

General Fund (10)

	<u>Elementary</u>	<u>Secondary</u>	<u>Federal</u>	<u>Total</u>
2600 Operation and Maintenance of Plant Services				
100 Personnel Services – Salaries				
100 Personnel Services – Salaries				4,473,812.46
Total Personnel Services – Salaries				\$4,473,812.46
200 Personnel Services – Employee Benefits				
210 Group Insurance – Contracted Provider				8,878.79
220 Social Security Contributions				327,975.27
230 PSERS Retirement Contributions				1,481,437.40
250 Unemployment Compensation				83,862.97
270 Group Insurance – Self-Insurance				664,825.28
291 Other Retirement Plans				12,283.60
Total Personnel Services – Employee Benefits				\$2,579,263.31
300 Purchased Professional and Technical Services				
329 Professional Educational Services – Other				1,400.00
330 Other Professional Services				26,800.40
340 Technical Services				12,632.50
350 Security / Safety Services				1,547.33
Total Purchased Professional and Technical Services				\$42,380.23
400 Purchased Property Services				
410 Cleaning Services				146,462.79
420 Utility Services				99,437.56
430 Repairs and Maintenance Services				832,246.42
440 Rentals				42,135.43
460 Extermination Services				9,490.00
490 Other Purchased Property Services				2,496.43
Total Purchased Property Services				\$1,132,268.63
500 Other Purchased Services				
523 General Property and Liability Insurance				337,532.00
529 Other Insurance				14,587.00
530 Communications				151,447.74
580 Travel				1,000.03
599 Other Miscellaneous Purchased Services				16,151.72
Total Other Purchased Services				\$520,718.49
600 Supplies				
610 General Supplies	291,690.80	292,184.45		583,875.25
620 Energy				1,151,700.29
630 Food				50.25
650 Supplies & Fees – Technology Related				17,625.00
Total Supplies	\$291,690.80	\$292,184.45		\$1,753,250.79
700 Property				
752 Capital Equipment – Original and Additional				455,853.00
762 Capitalized Equipment - Replacement				80,557.45
Total Property				\$536,410.45

General Fund (10)

2600 Operation and Maintenance of Plant Services

Elementary

Secondary

Federal

Total

800 Other Objects

810 Dues and Fees

55.85

Total Other Objects

\$55.85

Total 2600 Operation and Maintenance of Plant Services

\$291,690.80

\$292,184.45

\$11,038,160.21

General Fund (10)

	<u>Elementary</u>	<u>Secondary</u>	<u>Federal</u>	<u>Total</u>
2610 Supervision of Operation and Maintenance of Plant Services				
100 Personnel Services – Salaries				
100 Personnel Services – Salaries				409,681.29
Total Personnel Services – Salaries				\$409,681.29
200 Personnel Services – Employee Benefits				
210 Group Insurance – Contracted Provider				856.12
220 Social Security Contributions				29,390.45
230 PSERS Retirement Contributions				137,852.53
270 Group Insurance – Self-Insurance				48,821.29
291 Other Retirement Plans				1,750.00
Total Personnel Services – Employee Benefits				\$218,670.39
300 Purchased Professional and Technical Services				
329 Professional Educational Services – Other				1,400.00
Total Purchased Professional and Technical Services				\$1,400.00
500 Other Purchased Services				
580 Travel				967.03
Total Other Purchased Services				\$967.03
600 Supplies				
610 General Supplies	38.89	38.89		77.78
Total Supplies	\$38.89	\$38.89		\$77.78
Total 2610 Supervision of Operation and Maintenance of Plant Services	\$38.89	\$38.89		\$630,796.49

General Fund (10)

	<u>Elementary</u>	<u>Secondary</u>	<u>Federal</u>	<u>Total</u>
2611 Supervision of Operation and Maintenance of Plant Services – Head of Component				
100 Personnel Services – Salaries				
100 Personnel Services – Salaries				236,622.07
Total Personnel Services – Salaries				\$236,622.07
200 Personnel Services – Employee Benefits				
210 Group Insurance – Contracted Provider				871.46
220 Social Security Contributions				17,613.13
230 PSERS Retirement Contributions				78,959.64
270 Group Insurance – Self-Insurance				16,409.38
291 Other Retirement Plans				1,750.00
Total Personnel Services – Employee Benefits				\$115,603.61
Total 2611 Supervision of Operation and Maintenance of Plant Services – Head of Component				\$352,225.68

General Fund (10)

	<u>Elementary</u>	<u>Secondary</u>	<u>Federal</u>	<u>Total</u>
2619 Supervision of Operation and Maintenance of Plant Services – All Other Supervision				
100 Personnel Services – Salaries				
100 Personnel Services – Salaries				173,059.22
Total Personnel Services – Salaries				\$173,059.22
200 Personnel Services – Employee Benefits				
210 Group Insurance – Contracted Provider				(15.34)
220 Social Security Contributions				11,777.32
230 PSERS Retirement Contributions				58,892.89
270 Group Insurance – Self-Insurance				32,411.91
Total Personnel Services – Employee Benefits				\$103,066.78
300 Purchased Professional and Technical Services				
329 Professional Educational Services – Other				1,400.00
Total Purchased Professional and Technical Services				\$1,400.00
500 Other Purchased Services				
580 Travel				967.03
Total Other Purchased Services				\$967.03
600 Supplies				
610 General Supplies	38.89	38.89		77.78
Total Supplies	\$38.89	\$38.89		\$77.78
Total 2619 Supervision of Operation and Maintenance of Plant Services – All Other Supervision	\$38.89	\$38.89		\$278,570.81

General Fund (10)

	<u>Elementary</u>	<u>Secondary</u>	<u>Federal</u>	<u>Total</u>
2620 Operation of Buildings Services				
100 Personnel Services – Salaries				
100 Personnel Services – Salaries				3,203,310.65
Total Personnel Services – Salaries				\$3,203,310.65
200 Personnel Services – Employee Benefits				
210 Group Insurance – Contracted Provider				6,551.98
220 Social Security Contributions				236,568.57
230 PSERS Retirement Contributions				1,066,460.37
250 Unemployment Compensation				16,912.10
270 Group Insurance – Self-Insurance				417,272.73
291 Other Retirement Plans				10,533.60
Total Personnel Services – Employee Benefits				\$1,754,299.35
300 Purchased Professional and Technical Services				
330 Other Professional Services				26,575.40
340 Technical Services				12,632.50
Total Purchased Professional and Technical Services				\$39,207.90
400 Purchased Property Services				
410 Cleaning Services				91,247.79
420 Utility Services				99,437.56
430 Repairs and Maintenance Services				692,988.19
440 Rentals				42,135.43
460 Extermination Services				9,490.00
490 Other Purchased Property Services				2,496.43
Total Purchased Property Services				\$937,795.40
500 Other Purchased Services				
523 General Property and Liability Insurance				337,532.00
529 Other Insurance				14,587.00
530 Communications				147,842.60
599 Other Miscellaneous Purchased Services				16,151.72
Total Other Purchased Services				\$516,113.32
600 Supplies				
610 General Supplies	258,960.86	259,454.52		518,415.38
620 Energy				1,151,700.29
630 Food				50.25
650 Supplies & Fees – Technology Related				11,990.00
Total Supplies				\$1,682,155.92
700 Property				
752 Capital Equipment – Original and Additional				329,462.32
762 Capitalized Equipment - Replacement				79,867.45
Total Property				\$409,329.77
800 Other Objects				
810 Dues and Fees				55.85

General Fund (10)

2620 Operation of Buildings Services

	<u>Elementary</u>	<u>Secondary</u>	<u>Federal</u>	<u>Total</u>
Total Other Objects				\$55.85
Total 2620 Operation of Buildings Services	\$258,960.86	\$259,454.52		\$8,542,268.16

General Fund (10)

	<u>Elementary</u>	<u>Secondary</u>	<u>Federal</u>	<u>Total</u>
2630 Care and Upkeep of Grounds Services				
100 Personnel Services – Salaries				
100 Personnel Services – Salaries				322,974.47
Total Personnel Services – Salaries				\$322,974.47
200 Personnel Services – Employee Benefits				
210 Group Insurance – Contracted Provider				(361.91)
220 Social Security Contributions				24,190.60
230 PSERS Retirement Contributions				109,886.13
250 Unemployment Compensation				58,494.82
270 Group Insurance – Self-Insurance				18,874.44
Total Personnel Services – Employee Benefits				\$211,084.08
400 Purchased Property Services				
410 Cleaning Services				55,215.00
430 Repairs and Maintenance Services				53,399.81
Total Purchased Property Services				\$108,614.81
600 Supplies				
610 General Supplies	19,521.65	19,521.65		39,043.30
Total Supplies	\$19,521.65	\$19,521.65		\$39,043.30
700 Property				
752 Capital Equipment – Original and Additional				86,667.85
Total Property				\$86,667.85
Total 2630 Care and Upkeep of Grounds Services	\$19,521.65	\$19,521.65		\$768,384.51

General Fund (10)

	<u>Elementary</u>	<u>Secondary</u>	<u>Federal</u>	<u>Total</u>
2660 Safety and Security Services				
100 Personnel Services – Salaries				
100 Personnel Services – Salaries				537,846.05
Total Personnel Services – Salaries				\$537,846.05
200 Personnel Services – Employee Benefits				
210 Group Insurance – Contracted Provider				1,832.60
220 Social Security Contributions				37,825.65
230 PSERS Retirement Contributions				167,238.37
250 Unemployment Compensation				8,456.05
270 Group Insurance – Self-Insurance				179,856.82
Total Personnel Services – Employee Benefits				\$395,209.49
300 Purchased Professional and Technical Services				
330 Other Professional Services				225.00
350 Security / Safety Services				1,547.33
Total Purchased Professional and Technical Services				\$1,772.33
400 Purchased Property Services				
430 Repairs and Maintenance Services				85,858.42
Total Purchased Property Services				\$85,858.42
500 Other Purchased Services				
530 Communications				3,605.14
580 Travel				33.00
Total Other Purchased Services				\$3,638.14
600 Supplies				
610 General Supplies	13,169.40	13,169.39		26,338.79
650 Supplies & Fees – Technology Related				5,635.00
Total Supplies	\$13,169.40	\$13,169.39		\$31,973.79
700 Property				
752 Capital Equipment – Original and Additional				39,722.83
762 Capitalized Equipment - Replacement				690.00
Total Property				\$40,412.83
Total 2660 Safety and Security Services	\$13,169.40	\$13,169.39		\$1,096,711.05

General Fund (10)

	<u>Elementary</u>	<u>Secondary</u>	<u>Federal</u>	<u>Total</u>
2700 Student Transportation Services				
300 <u>Purchased Professional and Technical Services</u>				
340 Technical Services				16,891.40
Total Purchased Professional and Technical Services				\$16,891.40
500 <u>Other Purchased Services</u>				
513 Contracted Carriers				6,031,288.61
516 Student Transportation Services From the IU				885,522.96
519 Student Transportation Services From Other Sources				28,507.51
580 Travel				1,424.68
Total Other Purchased Services				\$6,946,743.76
Total 2700 Student Transportation Services				\$6,963,635.16

General Fund (10)

2720 Vehicle Operation Services

Elementary

Secondary

Federal

Total

300 Purchased Professional and Technical Services

340 Technical Services

16,891.40

Total Purchased Professional and Technical Services

\$16,891.40

500 Other Purchased Services

513 Contracted Carriers

5,599,871.91

516 Student Transportation Services From the IU

885,522.96

519 Student Transportation Services From Other Sources

28,507.51

Total Other Purchased Services

\$6,513,902.38

Total 2720 Vehicle Operation Services

\$6,530,793.78

LEA : 123468402 Upper Merion Area SD

Printed 11/21/2024 8:42:05 AM

General Fund (10)

2750 Nonpublic Transportation

Elementary

Secondary

Federal

Total

500 Other Purchased Services

513 Contracted Carriers

431,416.70

Total Other Purchased Services

\$431,416.70

Total 2750 Nonpublic Transportation

\$431,416.70

LEA : 123468402 Upper Merion Area SD

Printed 11/21/2024 8:42:05 AM

General Fund (10)

2790 Other Student Transportation Services

Elementary

Secondary

Federal

Total

500 Other Purchased Services

580 Travel

1,424.68

Total Other Purchased Services

\$1,424.68

Total 2790 Other Student Transportation Services

\$1,424.68

General Fund (10)

2800 Support Services – Central

Elementary

Secondary

Federal

Total

100 Personnel Services – Salaries

100 Personnel Services – Salaries 735,260.19

Total Personnel Services – Salaries

\$735,260.19

200 Personnel Services – Employee Benefits

210 Group Insurance – Contracted Provider 2,241.98

220 Social Security Contributions 53,224.93

230 PSERS Retirement Contributions 241,105.91

240 Tuition Reimbursement 18,804.00

270 Group Insurance – Self-Insurance 131,854.42

291 Other Retirement Plans 47,502.22

Total Personnel Services – Employee Benefits

\$494,733.46

300 Purchased Professional and Technical Services

310 Official / Administrative Services 27,389.19

330 Other Professional Services 9,425.02

340 Technical Services 230,190.98

360 Employee Training and Development Services 15,175.50

Total Purchased Professional and Technical Services

\$282,180.69

400 Purchased Property Services

440 Rentals 299.00

Total Purchased Property Services

\$299.00

500 Other Purchased Services

530 Communications 3,290.82

580 Travel 3,543.82

Total Other Purchased Services

\$6,834.64

600 Supplies

610 General Supplies 25,166.00

650 Supplies & Fees – Technology Related 9,776.14

Total Supplies

\$34,942.14

700 Property

752 Capital Equipment – Original and Additional 62,320.00

762 Capitalized Equipment - Replacement 2,798.00

Total Property

\$65,118.00

800 Other Objects

810 Dues and Fees 1,001.00

Total Other Objects

\$1,001.00

Total 2800 Support Services – Central

\$1,620,369.12

General Fund (10)

2830 Staff Services

Elementary

Secondary

Federal

Total

200 Personnel Services – Employee Benefits

240 Tuition Reimbursement

18,804.00

Total Personnel Services – Employee Benefits

\$18,804.00

300 Purchased Professional and Technical Services

310 Official / Administrative Services

27,389.19

330 Other Professional Services

135.00

360 Employee Training and Development Services

15,175.50

Total Purchased Professional and Technical Services

\$42,699.69

Total 2830 Staff Services

\$61,503.69

General Fund (10)

	<u>Elementary</u>	<u>Secondary</u>	<u>Federal</u>	<u>Total</u>
2834 Staff Development Services – Non-Instructional, Certified Staff Only				
200 Personnel Services – Employee Benefits				
240 Tuition Reimbursement				18,804.00
Total Personnel Services – Employee Benefits				\$18,804.00
300 Purchased Professional and Technical Services				
360 Employee Training and Development Services				13,395.50
Total Purchased Professional and Technical Services				\$13,395.50
Total 2834 Staff Development Services – Non-Instructional, Certified Staff Only				\$32,199.50

LEA : 123468402 Upper Merion Area SD

Printed 11/21/2024 8:42:05 AM

General Fund (10)

2835 Health Services

Elementary

Secondary

Federal

Total

300 Purchased Professional and Technical Services

330 Other Professional Services

135.00

Total Purchased Professional and Technical Services

\$135.00

Total 2835 Health Services

\$135.00

General Fund (10)

2836 Staff Development Services – Non-Instructional, Non-Certified Staff Only

Elementary

Secondary

Federal

Total

300 Purchased Professional and Technical Services

310 Official / Administrative Services

27,389.19

360 Employee Training and Development Services

1,780.00

Total Purchased Professional and Technical Services

\$29,169.19

Total 2836 Staff Development Services – Non-Instructional, Non-Certified Staff Only

\$29,169.19

General Fund (10)

	<u>Elementary</u>	<u>Secondary</u>	<u>Federal</u>	<u>Total</u>
2840 Data Processing Services				
100 Personnel Services – Salaries				
100 Personnel Services – Salaries				735,260.19
Total Personnel Services – Salaries				\$735,260.19
200 Personnel Services – Employee Benefits				
210 Group Insurance – Contracted Provider				2,241.98
220 Social Security Contributions				53,224.93
230 PSERS Retirement Contributions				241,105.91
270 Group Insurance – Self-Insurance				131,854.42
291 Other Retirement Plans				47,502.22
Total Personnel Services – Employee Benefits				\$475,929.46
300 Purchased Professional and Technical Services				
330 Other Professional Services				9,290.02
340 Technical Services				230,190.98
Total Purchased Professional and Technical Services				\$239,481.00
500 Other Purchased Services				
530 Communications				3,290.82
580 Travel				3,529.75
Total Other Purchased Services				\$6,820.57
600 Supplies				
610 General Supplies				25,166.00
650 Supplies & Fees – Technology Related				9,776.14
Total Supplies				\$34,942.14
700 Property				
752 Capital Equipment – Original and Additional				62,320.00
762 Capitalized Equipment - Replacement				2,798.00
Total Property				\$65,118.00
800 Other Objects				
810 Dues and Fees				1,001.00
Total Other Objects				\$1,001.00
Total 2840 Data Processing Services				\$1,558,552.36

General Fund (10)

2860 Management Services

Elementary

Secondary

Federal

Total

400 Purchased Property Services

440 Rentals

299.00

Total Purchased Property Services

\$299.00

500 Other Purchased Services

580 Travel

14.07

Total Other Purchased Services

\$14.07

Total 2860 Management Services

\$313.07

LEA : 123468402 Upper Merion Area SD

Printed 11/21/2024 8:42:05 AM

General Fund (10)

2900 Other Support Services

Elementary

Secondary

Federal

Total

500 Other Purchased Services

595 IU Payments By Withholding

78,545.93

Total Other Purchased Services

\$78,545.93

Total 2900 Other Support Services

\$78,545.93

General Fund (10)

2910 Support Services Not Listed Elsewhere In the 2000 Series

Elementary

Secondary

Federal

Total

500 Other Purchased Services

595 IU Payments By Withholding

78,545.93

Total Other Purchased Services

\$78,545.93

Total 2910 Support Services Not Listed Elsewhere In the 2000 Series

\$78,545.93

General Fund (10)

3000 Operation of Non-Instructional Services

Total

100 Personnel Services – Salaries

100 Personnel Services – Salaries 1,370,165.54

Total Personnel Services – Salaries \$1,370,165.54

200 Personnel Services – Employee Benefits

210 Group Insurance – Contracted Provider (38.18)

220 Social Security Contributions 103,262.38

230 PSERS Retirement Contributions 457,318.87

250 Unemployment Compensation 9,377.06

270 Group Insurance – Self-Insurance 50,853.74

291 Other Retirement Plans 1,750.00

Total Personnel Services – Employee Benefits \$622,523.87

300 Purchased Professional and Technical Services

329 Professional Educational Services – Other 48,422.00

330 Other Professional Services 21,981.00

Total Purchased Professional and Technical Services \$70,403.00

400 Purchased Property Services

410 Cleaning Services 23,196.89

430 Repairs and Maintenance Services 3,594.36

Total Purchased Property Services \$26,791.25

500 Other Purchased Services

510 Student Transportation Services 72,644.98

530 Communications 1,535.73

550 Printing and Binding 178.00

580 Travel 22,722.79

591 Services Purchased Locally 116,409.44

Total Other Purchased Services \$213,490.94

600 Supplies

610 General Supplies 145,656.70

630 Food 545.08

650 Supplies & Fees – Technology Related 6,961.96

Total Supplies \$153,163.74

700 Property

752 Capital Equipment – Original and Additional 9,223.79

762 Capitalized Equipment - Replacement 2,897.22

Total Property \$12,121.01

800 Other Objects

810 Dues and Fees 17,970.13

890 Miscellaneous Expenditures 126,223.73

Total Other Objects \$144,193.86

Total 3000 Operation of Non-Instructional Services \$2,612,853.21

General Fund (10)

3200 Student Activities

Elementary Secondary Federal Total

100	<u>Personnel Services – Salaries</u>			
	100 Personnel Services – Salaries			1,370,165.54
Total Personnel Services – Salaries				\$1,370,165.54
200	<u>Personnel Services – Employee Benefits</u>			
	210 Group Insurance – Contracted Provider			(38.18)
	220 Social Security Contributions			103,262.38
	230 PSERS Retirement Contributions			457,318.87
	250 Unemployment Compensation			9,377.06
	270 Group Insurance – Self-Insurance			50,853.74
	291 Other Retirement Plans			1,750.00
Total Personnel Services – Employee Benefits				\$622,523.87
300	<u>Purchased Professional and Technical Services</u>			
	329 Professional Educational Services – Other			48,422.00
	330 Other Professional Services			21,981.00
Total Purchased Professional and Technical Services				\$70,403.00
400	<u>Purchased Property Services</u>			
	410 Cleaning Services			23,196.89
	430 Repairs and Maintenance Services			3,594.36
Total Purchased Property Services				\$26,791.25
500	<u>Other Purchased Services</u>			
	510 Student Transportation Services			72,644.98
	530 Communications			1,535.73
	550 Printing and Binding			178.00
	580 Travel			22,722.79
Total Other Purchased Services				\$97,081.50
600	<u>Supplies</u>			
	610 General Supplies			144,591.80
	630 Food			545.08
	650 Supplies & Fees – Technology Related			6,961.96
Total Supplies				\$152,098.84
700	<u>Property</u>			
	752 Capital Equipment – Original and Additional			9,223.79
	762 Capitalized Equipment - Replacement			2,897.22
Total Property				\$12,121.01
800	<u>Other Objects</u>			
	810 Dues and Fees			17,970.13
	890 Miscellaneous Expenditures			126,223.73
Total Other Objects				\$144,193.86
Total 3200 Student Activities				\$2,495,378.87

General Fund (10)

3300 Community Services

Elementary

Secondary

Federal

Total

500 Other Purchased Services

591 Services Purchased Locally

116,409.44

Total Other Purchased Services

\$116,409.44

600 Supplies

610 General Supplies

1,064.90

1,064.90

Total Supplies

\$1,064.90

\$1,064.90

Total 3300 Community Services

\$1,064.90

\$117,474.34

General Fund (10)

4000 Facilities Acquisition, Construction and Improvement Services

Total

400 Purchased Property Services

430 Repairs and Maintenance Services

110,674.02

Total Purchased Property Services

\$110,674.02

700 Property

752 Capital Equipment – Original and Additional

14,901.74

Total Property

\$14,901.74

Total 4000 Facilities Acquisition, Construction and Improvement Services

\$125,575.76

LEA : 123468402 Upper Merion Area SD

Printed 11/21/2024 8:42:26 AM

General Fund (10)

	<u>Elementary</u>	<u>Secondary</u>	<u>Federal</u>	<u>Total</u>
4600 Existing Building Improvement Services				
400 <u>Purchased Property Services</u>				
430 Repairs and Maintenance Services				110,674.02
Total Purchased Property Services				\$110,674.02
700 <u>Property</u>				
752 Capital Equipment – Original and Additional				14,901.74
Total Property				\$14,901.74
Total 4600 Existing Building Improvement Services				\$125,575.76

General Fund (10)

5000 Other Expenditures and Financing Uses

Total

800 Other Objects

830 Interest 7,318,791.00

880 Refunds of Prior Years' Receipts 79,888.30

Total Other Objects \$7,398,679.30

900 Other Uses of Funds

910 Redemption of Principal 5,620,137.00

Total Other Uses of Funds \$5,620,137.00

Total 5000 Other Expenditures and Financing Uses \$13,018,816.30

General Fund (10)

5100 Debt Service / Other Expenditures and Financing Uses	<u>Elementary</u>	<u>Secondary</u>	<u>Federal</u>	<u>Total</u>
800 Other Objects				
830 Interest				7,318,791.00
880 Refunds of Prior Years' Receipts				79,888.30
Total Other Objects				\$7,398,679.30
900 Other Uses of Funds				
910 Redemption of Principal				5,620,137.00
Total Other Uses of Funds				\$5,620,137.00
Total 5100 Debt Service / Other Expenditures and Financing Uses				\$13,018,816.30

LEA : 123468402 Upper Merion Area SD

Printed 11/21/2024 8:42:36 AM

General Fund (10)

	<u>Elementary</u>	<u>Secondary</u>	<u>Federal</u>	<u>Total</u>
5110 Debt Service				
800 Other Objects				
830 Interest				7,239,984.00
Total Other Objects				\$7,239,984.00
900 Other Uses of Funds				
910 Redemption of Principal				4,500,000.00
Total Other Uses of Funds				\$4,500,000.00
Total 5110 Debt Service				\$11,739,984.00

LEA : 123468402 Upper Merion Area SD

Printed 11/21/2024 8:42:36 AM

General Fund (10)

5130 Refund of Prior Year Revenues / Receipts	<u>Elementary</u>	<u>Secondary</u>	<u>Federal</u>	<u>Total</u>
800 <u>Other Objects</u>				
880 Refunds of Prior Years' Receipts				79,888.30
Total Other Objects				\$79,888.30
Total 5130 Refund of Prior Year Revenues / Receipts				\$79,888.30

LEA : 123468402 Upper Merion Area SD

Printed 11/21/2024 8:42:36 AM

General Fund (10)

5140 Leases and Other Right-to-Use Arrangements

Elementary

Secondary

Federal

Total

800 Other Objects

830 Interest

78,807.00

Total Other Objects

\$78,807.00

900 Other Uses of Funds

910 Redemption of Principal

1,120,137.00

Total Other Uses of Funds

\$1,120,137.00

Total 5140 Leases and Other Right-to-Use Arrangements

\$1,198,944.00

LEA : 123468402 Upper Merion Area SD

Printed 11/21/2024 8:42:11 AM

Capital Reserve Fund - § 1431 (32)

2000 Support Services

Total

300 Purchased Professional and Technical Services

330 Other Professional Services 13,300.00

Total Purchased Professional and Technical Services \$13,300.00

400 Purchased Property Services

430 Repairs and Maintenance Services 408,618.00

450 Construction Services 3,246.10

Total Purchased Property Services \$411,864.10

700 Property

752 Capital Equipment – Original and Additional 311,821.62

762 Capitalized Equipment - Replacement 2,243,097.28

Total Property \$2,554,918.90

800 Other Objects

810 Dues and Fees 101.00

Total Other Objects \$101.00

Total 2000 Support Services \$2,980,184.00

LEA : 123468402 Upper Merion Area SD

Printed 11/21/2024 8:42:11 AM

Capital Reserve Fund - § 1431 (32)

2500 Support Services – Business

Elementary

Secondary

Federal

Total

800 Other Objects

810 Dues and Fees

101.00

Total Other Objects

\$101.00

Total 2500 Support Services – Business

\$101.00

LEA : 123468402 Upper Merion Area SD

Printed 11/21/2024 8:42:11 AM

Capital Reserve Fund - § 1431 (32)

2510 Fiscal Services

Elementary

Secondary

Federal

Total

800 Other Objects

810 Dues and Fees

101.00

Total Other Objects

\$101.00

Total 2510 Fiscal Services

\$101.00

LEA : 123468402 Upper Merion Area SD

Printed 11/21/2024 8:42:11 AM

Capital Reserve Fund - § 1431 (32)

2515 Financial Accounting Services

Elementary

Secondary

Federal

Total

800 Other Objects

810 Dues and Fees

101.00

Total Other Objects

\$101.00

Total 2515 Financial Accounting Services

\$101.00

LEA : 123468402 Upper Merion Area SD

Printed 11/21/2024 8:42:11 AM

Capital Reserve Fund - § 1431 (32)

2600 Operation and Maintenance of Plant Services

Elementary

Secondary

Federal

Total

300 Purchased Professional and Technical Services

330 Other Professional Services

13,300.00

Total Purchased Professional and Technical Services

\$13,300.00

400 Purchased Property Services

430 Repairs and Maintenance Services

408,618.00

450 Construction Services

3,246.10

Total Purchased Property Services

\$411,864.10

700 Property

752 Capital Equipment – Original and Additional

311,821.62

762 Capitalized Equipment - Replacement

2,243,097.28

Total Property

\$2,554,918.90

Total 2600 Operation and Maintenance of Plant Services

\$2,980,083.00

LEA : 123468402 Upper Merion Area SD

Printed 11/21/2024 8:42:11 AM

Capital Reserve Fund - § 1431 (32)

2620 Operation of Buildings Services

Elementary

Secondary

Federal

Total

300 Purchased Professional and Technical Services

330 Other Professional Services

13,300.00

Total Purchased Professional and Technical Services

\$13,300.00

400 Purchased Property Services

430 Repairs and Maintenance Services

408,618.00

450 Construction Services

3,246.10

Total Purchased Property Services

\$411,864.10

700 Property

752 Capital Equipment – Original and Additional

311,821.62

762 Capitalized Equipment - Replacement

2,243,097.28

Total Property

\$2,554,918.90

Total 2620 Operation of Buildings Services

\$2,980,083.00

Capital Reserve Fund - § 1431 (32)

4000 Facilities Acquisition, Construction and Improvement Services

Total

300 Purchased Professional and Technical Services

350 Security / Safety Services 25,000.00

Total Purchased Professional and Technical Services \$25,000.00

400 Purchased Property Services

430 Repairs and Maintenance Services 233,850.98

Total Purchased Property Services \$233,850.98

700 Property

752 Capital Equipment – Original and Additional 3,505,659.69

762 Capitalized Equipment - Replacement 2,099,179.63

Total Property \$5,604,839.32

Total 4000 Facilities Acquisition, Construction and Improvement Services \$5,863,690.30

LEA : 123468402 Upper Merion Area SD

Printed 11/21/2024 8:42:29 AM

Capital Reserve Fund - § 1431 (32)

4500 Building Acquisition and Construction Services – Original and Additional

Elementary

Secondary

Federal

Total

400 Purchased Property Services

430 Repairs and Maintenance Services

(5,399.02)

Total Purchased Property Services

(\$5,399.02)

Total 4500 Building Acquisition and Construction Services – Original and Additional

(\$5,399.02)

LEA : 123468402 Upper Merion Area SD

Printed 11/21/2024 8:42:29 AM

Capital Reserve Fund - § 1431 (32)

	<u>Elementary</u>	<u>Secondary</u>	<u>Federal</u>	<u>Total</u>
4600 Existing Building Improvement Services				
300 <u>Purchased Professional and Technical Services</u>				
350 Security / Safety Services				25,000.00
Total Purchased Professional and Technical Services				\$25,000.00
400 <u>Purchased Property Services</u>				
430 Repairs and Maintenance Services				239,250.00
Total Purchased Property Services				\$239,250.00
700 <u>Property</u>				
752 Capital Equipment – Original and Additional				3,505,659.69
762 Capitalized Equipment - Replacement				2,099,179.63
Total Property				\$5,604,839.32
Total 4600 Existing Building Improvement Services				\$5,869,089.32

LEA : 123468402 Upper Merion Area SD

Printed 11/21/2024 8:42:00 AM

Other Capital Projects Fund (39)

1000 Instruction	<u>Total</u>
700 Property	
752 Capital Equipment – Original and Additional	25,119.36
Total Property	\$25,119.36
Total 1000 Instruction	\$25,119.36

LEA : 123468402 Upper Merion Area SD

Printed 11/21/2024 8:42:00 AM

Other Capital Projects Fund (39)

1100 Regular Programs – Elementary / Secondary

Elementary

Secondary

Federal

Total

700 Property

752 Capital Equipment – Original and Additional

25,119.36

25,119.36

Total Property

\$25,119.36

\$25,119.36

Total 1100 Regular Programs – Elementary / Secondary

\$25,119.36

\$25,119.36

LEA : 123468402 Upper Merion Area SD

Printed 11/21/2024 8:42:00 AM

Other Capital Projects Fund (39)

1110 Regular Programs

700 Property

752 Capital Equipment – Original and Additional

Total Property

Total 1110 Regular Programs

<u>Elementary</u>	<u>Secondary</u>	<u>Federal</u>	<u>Total</u>
	25,119.36		25,119.36
	\$25,119.36		\$25,119.36
	\$25,119.36		\$25,119.36

LEA : 123468402 Upper Merion Area SD

Printed 11/21/2024 8:42:14 AM

Other Capital Projects Fund (39)

2000 Support Services

700 Property

752 Capital Equipment – Original and Additional

114,840.00

756 Capitalized Technology Equipment – Original

14,317.50

Total Property **\$129,157.50**

Total 2000 Support Services **\$129,157.50**

LEA : 123468402 Upper Merion Area SD

Printed 11/21/2024 8:42:14 AM

Other Capital Projects Fund (39)

2200 Support Services – Instructional Staff

Elementary

Secondary

Federal

Total

700 Property

756 Capitalized Technology Equipment – Original

14,317.50

14,317.50

Total Property

\$14,317.50

\$14,317.50

Total 2200 Support Services – Instructional Staff

\$14,317.50

\$14,317.50

LEA : 123468402 Upper Merion Area SD

Printed 11/21/2024 8:42:14 AM

Other Capital Projects Fund (39)

2220 Technology Support Services

700 Property

756 Capitalized Technology Equipment – Original

Total Property

Total 2220 Technology Support Services

<u>Elementary</u>	<u>Secondary</u>	<u>Federal</u>	<u>Total</u>
	14,317.50		14,317.50
	\$14,317.50		\$14,317.50
	\$14,317.50		\$14,317.50

LEA : 123468402 Upper Merion Area SD

Printed 11/21/2024 8:42:14 AM

Other Capital Projects Fund (39)

2600 Operation and Maintenance of Plant Services

Elementary

Secondary

Federal

Total

700 Property

752 Capital Equipment – Original and Additional

114,840.00

Total Property				\$114,840.00
Total 2600 Operation and Maintenance of Plant Services				\$114,840.00

LEA : 123468402 Upper Merion Area SD

Printed 11/21/2024 8:42:14 AM

Other Capital Projects Fund (39)

2620 Operation of Buildings Services

Elementary

Secondary

Federal

Total

700 Property

752 Capital Equipment – Original and Additional

114,840.00

Total Property

\$114,840.00

Total 2620 Operation of Buildings Services

\$114,840.00

LEA : 123468402 Upper Merion Area SD

Printed 11/21/2024 8:42:23 AM

Other Capital Projects Fund (39)

3000 Operation of Non-Instructional Services

Total

600 Supplies

610 General Supplies

1,010.93

Total Supplies

\$1,010.93

700 Property

752 Capital Equipment – Original and Additional

55,782.07

Total Property

\$55,782.07

Total 3000 Operation of Non-Instructional Services

\$56,793.00

LEA : 123468402 Upper Merion Area SD

Printed 11/21/2024 8:42:23 AM

Other Capital Projects Fund (39)

3200 Student Activities

Elementary

Secondary

Federal

Total

600 Supplies

610 General Supplies

1,010.93

Total Supplies

\$1,010.93

700 Property

752 Capital Equipment – Original and Additional

55,782.07

Total Property

\$55,782.07

Total 3200 Student Activities

\$56,793.00

Other Capital Projects Fund (39)

4000 Facilities Acquisition, Construction and Improvement Services

Total

300 Purchased Professional and Technical Services

330 Other Professional Services 625,170.14

Total Purchased Professional and Technical Services \$625,170.14

400 Purchased Property Services

430 Repairs and Maintenance Services 58,022.00

450 Construction Services 4,675,442.67

Total Purchased Property Services \$4,733,464.67

600 Supplies

610 General Supplies 3,269.60

Total Supplies \$3,269.60

700 Property

752 Capital Equipment – Original and Additional 15,481.07

Total Property \$15,481.07

Total 4000 Facilities Acquisition, Construction and Improvement Services \$5,377,385.48

LEA : 123468402 Upper Merion Area SD

Printed 11/21/2024 8:42:33 AM

Other Capital Projects Fund (39)

4300 Architecture and Engineering Services / Educational Specifications Development – Original and Additional

Elementary

Secondary

Federal

Total

300 Purchased Professional and Technical Services

330 Other Professional Services

625,170.14

Total Purchased Professional and Technical Services

\$625,170.14

Total 4300 Architecture and Engineering Services / Educational Specifications Development – Original and Additional

\$625,170.14

Other Capital Projects Fund (39)

4500 Building Acquisition and Construction Services – Original and Additional

Elementary

Secondary

Federal

Total

400 Purchased Property Services

450 Construction Services

4,675,442.67

Total Purchased Property Services

\$4,675,442.67

700 Property

752 Capital Equipment – Original and Additional

15,481.07

Total Property

\$15,481.07

Total 4500 Building Acquisition and Construction Services – Original and Additional

\$4,690,923.74

LEA : 123468402 Upper Merion Area SD

Printed 11/21/2024 8:42:33 AM

Other Capital Projects Fund (39)

4600 Existing Building Improvement Services

Elementary

Secondary

Federal

Total

400 Purchased Property Services

430 Repairs and Maintenance Services

58,022.00

Total Purchased Property Services

\$58,022.00

600 Supplies

610 General Supplies

3,269.60

Total Supplies

\$3,269.60

Total 4600 Existing Building Improvement Services

\$61,291.60

	<u>General Fund(10)</u>	<u>Student Sponsored Activity Fund(21)</u>	<u>Public Purpose Trust(27)</u>	<u>Other Compt Approved (28)</u>	<u>Athletic / Activity(29)</u>
1000 Instruction					
1100 Regular Programs - Elementary / Secondary	50,220,359.50				
1200 Special Programs - Elementary / Secondary	22,884,817.53				
1300 Vocational Education	2,720,066.74				
1400 Other Instructional Programs - Elementary / Secondary	415,598.42				
1500 Nonpublic School Programs	23,463.99				
Total Instruction	\$76,264,306.18				
2000 Support Services					
2100 Support Services - Students	5,475,103.27				
2200 Support Services - Instructional Staff	4,373,719.19				
2300 Support Services - Administration	6,214,917.55				
2400 Support Services - Pupil Health	1,412,347.98				
2500 Support Services - Business	1,199,912.94				
2600 Operation and Maintenance of Plant Services	11,038,160.21				
2700 Student Transportation Services	6,963,635.16				
2800 Support Services - Central	1,620,369.12				
2900 Other Support Services	78,545.93				
Total Support Services	\$38,376,711.35				
3000 Operation of Non-Instructional Services					
3200 Student Activities	2,495,378.87				
3300 Community Services	117,474.34				
Total Operation of Non-Instructional Services	\$2,612,853.21				
4000 Facilities Acquisition, Construction and Improvement Services					
4300 Architecture and Engineering Services / Educational Specifications Development - Original and Additional					
4500 Building Acquisition and Construction Services - Original and Additional					
4600 Existing Building Improvement Services	125,575.76				
Total Facilities Acquisition, Construction and Improvement Services	\$125,575.76				
5000 Other Expenditures and Financing Uses					
5100 Debt Service / Other Expenditures and Financing Uses	13,018,816.30				
Total Other Expenditures and Financing Uses	\$13,018,816.30				
TOTAL ACTUAL EXPENDITURES & OTHER FINANCING USES	\$130,398,262.80				

	<u>Capital Reserve (690.1850)(31)</u>	<u>Capital Reserve (1431)(32)</u>	<u>Other Capital Projects Fund(39)</u>	<u>Debt Service(40)</u>	<u>Permanent(90)</u>
1000 Instruction					
1100 Regular Programs - Elementary / Secondary			25,119.36		
1200 Special Programs - Elementary / Secondary					
1300 Vocational Education					
1400 Other Instructional Programs - Elementary / Secondary					
1500 Nonpublic School Programs					
Total Instruction			\$25,119.36		
2000 Support Services					
2100 Support Services - Students					
2200 Support Services - Instructional Staff			14,317.50		
2300 Support Services - Administration					
2400 Support Services - Pupil Health					
2500 Support Services - Business		101.00			
2600 Operation and Maintenance of Plant Services		2,980,083.00	114,840.00		
2700 Student Transportation Services					
2800 Support Services - Central					
2900 Other Support Services					
Total Support Services		\$2,980,184.00	\$129,157.50		
3000 Operation of Non-Instructional Services					
3200 Student Activities				56,793.00	
3300 Community Services					
Total Operation of Non-Instructional Services				\$56,793.00	
4000 Facilities Acquisition, Construction and Improvement Services					
4300 Architecture and Engineering Services / Educational Specifications Development - Original and Additional			625,170.14		
4500 Building Acquisition and Construction Services - Original and Additional		(5,399.02)	4,690,923.74		
4600 Existing Building Improvement Services		5,869,089.32	61,291.60		
Total Facilities Acquisition, Construction and Improvement Services		\$5,863,690.30	\$5,377,385.48		
5000 Other Expenditures and Financing Uses					
5100 Debt Service / Other Expenditures and Financing Uses					
Total Other Expenditures and Financing Uses					
TOTAL ACTUAL EXPENDITURES & OTHER FINANCING USES		\$8,843,874.30	\$5,588,455.34		

Total

1000 Instruction	
1100 Regular Programs - Elementary / Secondary	50,245,478.86
1200 Special Programs - Elementary / Secondary	22,884,817.53
1300 Vocational Education	2,720,066.74
1400 Other Instructional Programs - Elementary / Secondary	415,598.42
1500 Nonpublic School Programs	23,463.99
Total Instruction	\$76,289,425.54
2000 Support Services	
2100 Support Services - Students	5,475,103.27
2200 Support Services - Instructional Staff	4,388,036.69
2300 Support Services - Administration	6,214,917.55
2400 Support Services - Pupil Health	1,412,347.98
2500 Support Services - Business	1,200,013.94
2600 Operation and Maintenance of Plant Services	14,133,083.21
2700 Student Transportation Services	6,963,635.16
2800 Support Services - Central	1,620,369.12
2900 Other Support Services	78,545.93
Total Support Services	\$41,486,052.85
3000 Operation of Non-Instructional Services	
3200 Student Activities	2,552,171.87
3300 Community Services	117,474.34
Total Operation of Non-Instructional Services	\$2,669,646.21
4000 Facilities Acquisition, Construction and Improvement Services	
4300 Architecture and Engineering Services / Educational Specifications Development - Original and Additional	625,170.14
4500 Building Acquisition and Construction Services - Original and Additional	4,685,524.72
4600 Existing Building Improvement Services	6,055,956.68
Total Facilities Acquisition, Construction and Improvement Services	\$11,366,651.54
5000 Other Expenditures and Financing Uses	
5100 Debt Service / Other Expenditures and Financing Uses	13,018,816.30
Total Other Expenditures and Financing Uses	\$13,018,816.30
TOTAL ACTUAL EXPENDITURES & OTHER FINANCING USES	\$144,830,592.44

LEA : 123468402 Upper Merion Area SD

Printed 11/21/2024 8:42:51 AM

PSERS Salary Data (Salary Data should relate to the General Fund only)

Amount Description	Amount
Total Salary Base for salaries subject to PSERS withholding	55,589,800.58
Total Federally Funded salaries subject to PSERS withholding	1,821,758.18
	<hr/>

Title I Expenditure Data

Amount Description	Amount
Expenditures Funded with Current Title I Funds	734,732.00
Expenditures Funded with Carry over Title I Funds	57.00
	<hr/>
Total Title I Expenditure Data	\$734,789.00
	<hr/>

Title IV Revenue Data

Amount Description	Amount
Revenue from Title IV-A-1: Student Support and Academic Enrichment Grants	37,305.50
	<hr/>

1 .	<u>Current Special Education Expenditures within Function 1000</u> See list of exclusions in the note below.	19,499,640.34
2 .	<u>Current Special Education Expenditures within Function 2000</u> See list of exclusions in the note below.	6,006,196.20
2A.	<u>Current Special Education Expenditures within Sub-Function 2100</u> This data should also be included in line 2 above. See list of exclusions in the note below.	1,363,402.74
2B.	<u>Current Special Education Expenditures within Sub-Function 2200</u> This data should also be included in line 2 above. See list of exclusions in the note below.	615,305.76
2C.	<u>Current Special Education Expenditures within Sub-Function 2700</u> This data should also be included in line 2 above. See list of exclusions in the note below.	847,004.33
3.	<u>Current Special Education Expenditures within Sub-Function 3100</u> See list of exclusions in the note below.	
4.	<u>Current Special Education Expenditures within Sub-Function 3200</u> See list of exclusions in the note below.	

Note: The Current Special Education Expenditure amounts for each line should be calculated as follows:

- * Include the total expenditures for special education costs from all governmental funds and the food service fund 51 for the function/sub-function requested
- * Exclude data from sub-functions: 1243,1450,1500,1600,1807,2280,2450,2750,2990
- * Exclude data from objects: 322,511,512,516,561,562,564,566,592,593,594,595,596,597,700,830,899

Benefits for Staff Relative to Collective Bargaining Agreements

	OBJECT	COVERED	NOT COVERED	TOTAL
10 General Fund				
	211 Medical Insurance			
	212 Dental Insurance			
	215 Eye Care Insurance			
	216 Prescription Insurance			
	271 Self-Insurance Medical Benefits	6,507,140.03	2,436,979.88	8,944,119.91
	272 Self-Insurance Dental Benefits	300,109.04	100,293.31	400,402.35
	275 Self-Insurance Eye Care Benefits			
	276 Self-Insurance Prescription Benefits			
	FUND TOTAL	\$6,807,249.07	\$2,537,273.19	\$9,344,522.26
50 Enterprise Fund				
	211 Medical Insurance			
	212 Dental Insurance			
	215 Eye Care Insurance			
	216 Prescription Insurance			
	271 Self-Insurance Medical Benefits	131,247.24	41,235.27	172,482.51
	272 Self-Insurance Dental Benefits	6,117.12	1,173.36	7,290.48
	275 Self-Insurance Eye Care Benefits			
	276 Self-Insurance Prescription Benefits			
	FUND TOTAL	\$137,364.36	\$42,408.63	\$179,772.99
60 Internal Service Fund	No Self Insurance data to report			
	211 Medical Insurance			
	212 Dental Insurance			
	215 Eye Care Insurance			
	216 Prescription Insurance			
	271 Self-Insurance Medical Benefits			
	272 Self-Insurance Dental Benefits			
	275 Self-Insurance Eye Care Benefits			
	276 Self-Insurance Prescription Benefits			
	FUND TOTAL			
Total of All Funds		\$6,944,613.43	\$2,579,681.82	\$9,524,295.25

LEA : 123468402 Upper Merion Area SD

Printed 11/21/2024 8:42:56 AM

Function	Special Education (Prior Year)	Nonspecial Education (Prior Year)	Total (Prior Year)	Special Education (Current Year)	Nonspecial Education (Current Year)	Total (Current Year)
2120 Guidance Services	342,120.23	1,938,681.31	2,280,801.54	402,354.33	2,280,007.88	2,682,362.21
2140 Psychological Services	107,403.12	608,617.65	716,020.77	108,438.58	614,485.28	722,923.86
2150 Speech Pathology and Audiology Services						
2160 Social Work Services	57,411.00	441,815.11	499,226.11	53,276.41	409,996.74	463,273.15
2260 Instruction and Curriculum Development Services	315,256.58	1,786,453.97	2,101,710.55	323,976.28	1,835,865.60	2,159,841.88
2350 Legal and Accounting Services	55,613.24	335,209.81	390,823.05	59,640.88	358,033.10	417,673.98
2420 Medical Services	185,928.44	1,053,594.51	1,239,522.95	197,732.01	1,120,481.36	1,318,213.37
2440 Nursing Services						
2700 Student Transportation Services	929,612.06	5,267,801.69	6,197,413.75	1,044,545.27	5,919,089.89	6,963,635.16
Total	\$1,993,344.67	\$11,432,174.05	\$13,425,518.72	\$2,189,963.76	\$12,537,959.85	\$14,727,923.61

(PRINCIPAL AMOUNTS ONLY)

GOVERNMENTAL FUNDS/ ACTIVITIES

	Short-Term Borrowing	General Obligation Bonds/Notes	Authority Building Obligations	Leases, Other Right to Use Arrangements	Extended Term Financing Agreements	Other Long Term Debt/Liabilities	OPEB, Comp Abs, Net Pension Liab	Total
1. Debt at Beginning of Fiscal Year		203,625,000.00		2,836,106.00		14,201,093.00	168,005,335.00	388,667,534.00
2. Additional Debt Incurred During Year							586,604.00	586,604.00
3. Retirements and Repayments		4,500,000.00		1,257,065.00		1,011,501.00	3,310,732.00	10,079,298.00
4. Debt at End of Fiscal Year		199,125,000.00		1,579,041.00		13,189,592.00	165,281,207.00	379,174,840.00
5. Accreted Interest at End Of Fiscal Year								
6. Total Debt and Accreted Interest		199,125,000.00		1,579,041.00		13,189,592.00	165,281,207.00	379,174,840.00
7. Current Portion P&I - Due within 1 year		11,726,667.00		855,296.00		1,011,501.00	651,284.00	14,244,748.00
8. Interest Paid during current fiscal year		7,239,984.00		78,807.00				7,318,791.00

(PRINCIPAL AMOUNTS ONLY)

PROPRIETARY FUNDS

	Short-Term Borrowing	General Obligation Bonds/Notes	Authority Building Obligations	Leases, Other Right to Use Arrangements	Extended Term Financing Agreements	Other Long Term Debt/Liabilities	OPEB, Comp Abs, Net Pension Liab	Total
1. Debt at Beginning of Fiscal Year							2,171,134.00	2,171,134.00
2. Additional Debt Incurred During Year							18,527.00	18,527.00
3. Retirements and Repayments							42,742.00	42,742.00
4. Debt at End of Fiscal Year							2,146,919.00	2,146,919.00
5. Accreted Interest at End Of Fiscal Year								
6. Total Debt and Accreted Interest							2,146,919.00	2,146,919.00
7. Current Portion P&I - Due within 1 year							7,153.00	7,153.00
8. Interest Paid during current fiscal year								

Total Principal and Interest Payments Made by Your School - All Funds

Function	Fund		Principal (910)	Principal (920)	Interest (830)	Total (Principal +Interest)	Misc Other Uses (990)
5110	10	General Fund	4,500,000.00		7,239,984.00	11,739,984.00	
5110	20	Special Revenue Funds					
5110	30	Capital Projects Funds					
5110	40	Debt Service Fund					
5110	90	Permanent Fund					
5120	10	General Fund					
5120	20	Special Revenue Funds					
5120	30	Capital Projects Funds					
5120	40	Debt Service Fund					
5140	10	General Fund	1,120,137.00		78,807.00	1,198,944.00	
5140	20	Special Revenue Funds					
5140	30	Capital Projects Funds					
5140	40	Debt Service Fund					
5140	90	Permanent Fund					
Total Debt Payments - Governmental Funds			\$5,620,137.00		\$7,318,791.00	\$12,938,928.00	

Function	Fund		Principal (910)	Principal (920)	Interest (830)	Total (Principal +Interest)
5110	50	Enterprise Fund				
5110	60	Internal Service Fund				
5120	50	Enterprise Fund				
5120	60	Internal Service Fund				
5140	50	Enterprise Fund				
5140	60	Internal Service Fund				
Total Debt Payments - Proprietary Funds						

LEA : 123468402 Upper Merion Area SD

Printed 11/21/2024 8:42:59 AM

Debt Details
Governmental Funds/ Activities

Debt Category	Debt Issue Date (MM/YYYY)	Principal Amounts Only			Debt at End of Fiscal Year	Current Portion Due Within One Year (Principal and Interest)	Interest Paid During Fiscal Year
		Debt at Beginning of Fiscal Year	Additions	Reductions / Repayments			
General Obligation Bonds/Notes – CIB	05/2022	32,390,000.00		100,000.00	32,290,000.00	1,286,814.00	1,185,474.00
General Obligation Bonds/Notes – CIB	05/2022	26,110,000.00		110,000.00	26,000,000.00	1,066,600.00	955,626.00
General Obligation Bonds/Notes – CIB	03/2021	94,585,000.00		5,000.00	94,580,000.00	3,454,100.00	3,449,150.00
General Obligation Bonds/Notes – CIB	03/2021	6,350,000.00		140,000.00	6,210,000.00	336,550.00	194,350.00
General Obligation Bonds/Notes – CIB	07/2021	4,570,000.00		3,055,000.00	1,515,000.00	1,522,878.00	23,764.00
General Obligation Bonds/Notes – CIB	08/2020	22,150,000.00		460,000.00	21,690,000.00	1,261,250.00	800,550.00
General Obligation Bonds/Notes – CIB	03/2019	9,980,000.00		5,000.00	9,975,000.00	350,625.00	345,720.00
General Obligation Bonds/Notes – CIB	10/2017	4,745,000.00		5,000.00	4,740,000.00	237,850.00	187,950.00
General Obligation Bonds/Notes – CIB	10/2016	2,745,000.00		620,000.00	2,125,000.00	2,210,000.00	97,400.00
Leases and Other Right to Use Arrangements		2,836,106.00		1,257,065.00	1,579,041.00	855,296.00	78,807.00
Other Long Term Debt/Liabilities		14,201,093.00		1,011,501.00	13,189,592.00	1,011,501.00	
Compensated Absences		5,926,245.00	586,604.00		6,512,849.00	651,284.00	
Net Pension Liability		154,168,000.00		3,149,000.00	151,019,000.00		
Other Post-Employment Benefits (OPEB)		7,911,090.00		161,732.00	7,749,358.00		
Totals for Debt Entered:		\$388,667,534.00	\$586,604.00	\$10,079,298.00	\$379,174,840.00	\$14,244,748.00	\$7,318,791.00

Bond Details
Proprietary Funds

Debt Category	Debt Issue Date (MM/YYYY)	Principal Amounts Only			Debt at End of Fiscal Year	Current Portion Due Within One Year (Principal and Interest)	Interest Paid During Fiscal Year
		Debt at Beginning of Fiscal Year	Additions	Reductions / Repayments			
Compensated Absences		53,007.00	18,527.00		71,534.00	7,153.00	
Net Pension Liability		2,015,000.00		41,000.00	1,974,000.00		
Other Post-Employment Benefits (OPEB)		103,127.00		1,742.00	101,385.00		
Totals for Debt Entered:		\$2,171,134.00	\$18,527.00	\$42,742.00	\$2,146,919.00	\$7,153.00	

General Fund (10)

Section 1: Tuition/Purchased Services as Reported within Expenditure Detail

	Amount
Tuition Reported in General Fund Expenditures 1000-560	8,264,480.54
Purchased Services in General Fund Expenditures 1000-594 and 1000-597	14,098.53
Section 1 Total	\$8,278,579.07

Section 2: Tuition Paid to Institution Types During Fiscal Year

	Tuition Paid For Nonspecial Education	Tuition Paid For Special Education	Total
1 1306 Institutions			
2 Institutionalized Children's Programs		14,098.53	14,098.53
3 Juveniles Incarcerated in Adult Facilities			
4 Residential Treatment Facilities			
5 Other Local Education Agencies			
6 Brick and Mortar Charter Schools	306,315.92	109,120.81	415,436.73
7 Cyber Charter Schools	1,467,080.97	533,524.07	2,000,605.04
8 Career and Technology Centers	1,777,806.76		1,777,806.76
9 Approved Private Schools		1,561,606.56	1,561,606.56
10 PA Chartered Schools for the Deaf and Blind			
11 Private Residential Rehabilitative Institutions	200,928.28		200,928.28
12 Juvenile Detention Centers			
13 Special Program Jointures			
14 Other Tuition Not Included Elsewhere In This Section	963,609.33	1,344,487.84	2,308,097.17
Section 2 Total	\$4,715,741.26	\$3,562,837.81	\$8,278,579.07

Food Service / Cafeteria Operations Fund (51)

3000 Operation of Non-Instructional Services

Total

100 Personnel Services – Salaries

100 Personnel Services – Salaries 870,689.00

Total Personnel Services – Salaries \$870,689.00

200 Personnel Services – Employee Benefits

210 Group Insurance – Contracted Provider 347.00

220 Social Security Contributions 63,786.00

230 PSERS Retirement Contributions 214,525.00

250 Unemployment Compensation 2,852.00

270 Group Insurance – Self-Insurance 172,483.00

280 Other Post-Employment Benefits (OPEB) (2,239.00)

299 All Other Employee Benefits 23,244.00

Total Personnel Services – Employee Benefits \$474,998.00

300 Purchased Professional and Technical Services

390 Other Purchased Professional and Technical Services 8,072.00

Total Purchased Professional and Technical Services \$8,072.00

400 Purchased Property Services

430 Repairs and Maintenance Services 48,495.00

440 Rentals 2,335.00

Total Purchased Property Services \$50,830.00

500 Other Purchased Services

580 Travel 2,681.00

Total Other Purchased Services \$2,681.00

600 Supplies

610 General Supplies 103,197.00

630 Food 1,210,298.00

650 Supplies & Fees – Technology Related 9,655.00

Total Supplies \$1,323,150.00

700 Property

740 Depreciation 9,395.00

Total Property \$9,395.00

800 Other Objects

810 Dues and Fees 2,515.00

Total Other Objects \$2,515.00

Total 3000 Operation of Non-Instructional Services \$2,742,330.00

Food Service / Cafeteria Operations Fund (51)

	<u>Elementary</u>	<u>Secondary</u>	<u>Federal</u>	<u>Total</u>
3100 Food Services				
100 Personnel Services – Salaries				
100 Personnel Services – Salaries				870,689.00
Total Personnel Services – Salaries				\$870,689.00
200 Personnel Services – Employee Benefits				
210 Group Insurance – Contracted Provider				347.00
220 Social Security Contributions				63,786.00
230 PSERS Retirement Contributions				214,525.00
250 Unemployment Compensation				2,852.00
270 Group Insurance – Self-Insurance				172,483.00
280 Other Post-Employment Benefits (OPEB)				(2,239.00)
299 All Other Employee Benefits				23,244.00
Total Personnel Services – Employee Benefits				\$474,998.00
300 Purchased Professional and Technical Services				
390 Other Purchased Professional and Technical Services				8,072.00
Total Purchased Professional and Technical Services				\$8,072.00
400 Purchased Property Services				
430 Repairs and Maintenance Services				48,495.00
440 Rentals				2,335.00
Total Purchased Property Services				\$50,830.00
500 Other Purchased Services				
580 Travel				2,681.00
Total Other Purchased Services				\$2,681.00
600 Supplies				
610 General Supplies				103,197.00
630 Food				1,210,298.00
650 Supplies & Fees – Technology Related				9,655.00
Total Supplies				\$1,323,150.00
700 Property				
740 Depreciation				9,395.00
Total Property				\$9,395.00
800 Other Objects				
810 Dues and Fees				2,515.00
Total Other Objects				\$2,515.00
Total 3100 Food Services				\$2,742,330.00

	<u>Food Service(51)</u>	<u>Child Care Operations(52)</u>	<u>Other Enterprise(58)</u>	<u>Internal Service(60)</u>	<u>Total</u>
3000 <u>Operation of Non-Instructional Services</u>					
3100 Food Services	2,742,330.00				2,742,330.00
Total Operation of Non-Instructional Services	\$2,742,330.00				\$2,742,330.00
TOTAL ACTUAL EXPENDITURES & OTHER FINANCING USES	\$2,742,330.00				\$2,742,330.00

LEA : 123468402 Upper Merion Area SD

Printed 11/21/2024 8:43:15 AM

Fund	School	School Number	Local Personnel	Local Nonpersonnel	State Personnel	State Nonpersonnel	Federal Personnel	Federal Nonpersonnel	Total	Explanation
10										
	Bridgeport El Sch	6468	5,952,278.85	932,208.17	1,050,325.88	164,495.37	428,277.80	53,865.67	8,581,451.74	
	Caley El Sch	4832	6,852,285.52	1,424,384.11	1,209,139.05	251,343.65	523,088.75	86,246.96	10,346,488.04	
	Candlebrook El Sch	3389	5,296,959.34	1,067,924.38	934,689.65	188,443.56	145,643.38	62,988.40	7,696,648.71	
	Gulph EL Sch	8426	8,357,571.15	1,489,287.93	1,474,758.40	262,796.44	248,898.33	86,772.27	11,920,084.52	
	Roberts El Sch	3391	5,280,640.02	958,924.13	931,809.99	169,209.62	109,578.20	56,407.71	7,506,569.67	
	Upper Merion HS	3395	20,876,503.28	4,634,225.76	3,683,821.32	817,745.17	445,836.43	240,896.39	30,699,028.35	
	Upper Merion MS	3394	20,417,207.45	4,101,852.91	3,602,775.00	723,803.84	550,094.81	217,916.92	29,613,650.93	
Total			73,033,445.61	14,608,807.39	12,887,319.29	2,577,837.65	2,451,417.70	805,094.32	106,363,921.96	