

Requests for Information (RFI)

Structured Cabling RFP 2025-02

Form 470-250006845

1. Are we replacing every fiber cable or just the ethernet cables?

Answer: Replacing all copper and fiber patch cables

2. Will the racks be installed in the same location or a new location? Is this a Rip and Replace?

Answer: For the IDFs that include an enclosure, the racks will be installed in the same location.

3. Are the racks all the same or different in all rooms?

Answer: The existing racks are different in different rooms. The requested replacement racks should be standardized.

4. Will there be fiber cables replaced or just ethernet? Regarding: RFP page 14

Answer: Yes, for the switches with fiber patch cables the fiber will need to be replaced.

5. Is the fiber the same at all sites?

Answer: No. Most of the fiber is a 12-strand bundle, OM3.

6. Some of the ethernet patch panels are not modular and can't be brought up to Cat 6a standards. Do we want these replaced?

Answer: Yes and here is a list:

DO-MDF needs ethernet patch panel, 6 rack units

DO-MDF1 needs ethernet patch panel, 2 rack units

TES-MDF needs ethernet patch panel, 2 rack units

TES-IDF1-1 needs ethernet patch panel, 2 rack units

TES-IDF2-1 needs ethernet patch panel, 2 rack units

TES-IDF4-1 needs ethernet patch panel, 4 rack units

TES-IDF5-1 needs ethernet patch panel, 2 rack units

TES-IDF8-1 needs ethernet patch panel, 2 rack units

CHS-MDF none needed

CHS-IDF1-1 needs ethernet patch panel, 1 rack unit

CHS-IDF2-1 needs ethernet patch panel, 2 rack units

CHS-IDF3-1 needs ethernet patch panel, 3 rack units

CHS-IDF4-1 needs ethernet patch panel, 2 rack units

CHS-IDF5-1 needs ethernet patch panel, 4 rack units

CHS-IDF6-1 needs ethernet patch panel, 4 rack units

CHS-IDF9-1 needs ethernet patch panel, 1 rack unit

CHS-IDF11-1 needs ethernet patch panel, 4 rack units

CMS-IDF1-1 needs ethernet patch panel, 6 rack units

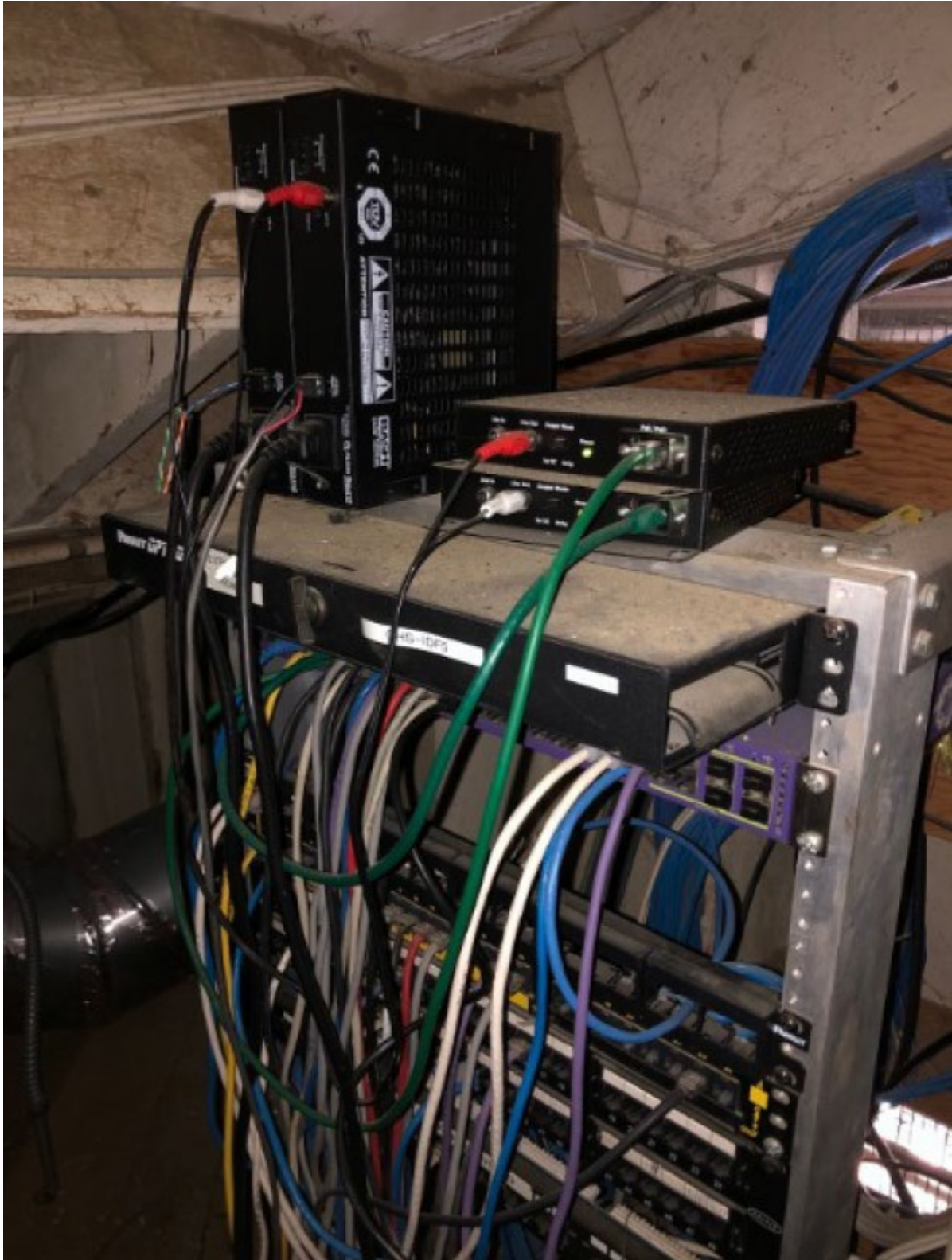
CMS-IDF2-1 needs ethernet patch panel, 5 rack units

CMS-IDF4-1 needs ethernet patch panel, 1 rack unit

CMS-IDF5-1 needs ethernet patch panel, 4 rack units

7. IDF 5 was not accessible during the site walk and this IDF needs a lift to access. Can we provide a picture of the IDF?

Answer: Yes – see picture below.



8. How many strands of fiber for each fiber patch panel?

Answer: Plan and build out the fiber patch panels for a 12 strand bundle.