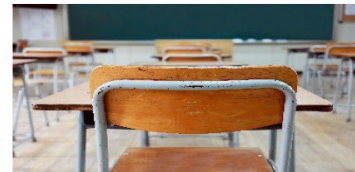




# 2024 Redistricting Study

Public Information Session 2  
October 21, 2024

*Presented by: Dublin City Schools and  
Cropper GIS Consulting*



Cropper GIS

# ***Welcome and Introductions***

Cropper GIS

# Tonight's Purpose

- **Learn** how the community-based redistricting study process has been working.
- **Review DRAFT** boundary options for the Elementary and Middle Schools in the study area and speak directly with Internal Planning Team (IPT) members.
- **Complete** online survey related to the options to provide valuable input to the IPT.

# Redistricting Study

Cropper GIS Consulting was hired by Dublin City Schools to facilitate and manage the project. Our firm is tasked to:

- A. **Develop** supporting materials to help facilitate the study.
- B. **Facilitate** an expert-based process of developing a student redistricting plan.
- C. **Empower** the community throughout the process.
- D. **Leverage** expertise to develop logical, efficient, and effective student redistricting options with the planning team.
- E. **Recommend** a redistricting plan to the Superintendent.

# The Facilitator

## Cropper GIS Consulting, LLC

- K-12 school planning is our business and our passion. Our specialty is facilitating redistricting processes.
- Cropper GIS works with K-12 school districts to:
  - Develop redistricting plans
  - Facilitate community engagement
  - Perform demographic studies
  - Prepare long-range facility master plans
  - Conduct housing and pupil yield-factor studies

## Matthew Cropper, Cropper GIS

- 25+ years experience providing GIS mapping and analysis services to school districts and other clients
- Facilitated boundary change study projects across the U.S.
- Published numerous times on topics related to K-12 facility and boundary change processes

# Stakeholders

Outline of Stakeholder Responsibilities	
Consultant	<ul style="list-style-type: none"> <li>• Schedule and facilitate internal planning team meetings.</li> <li>• Communicate updates with planning team, including updated handout and meeting schedule logistics.</li> <li>• Conduct public meetings to solicit feedback related to draft options that are under consideration.</li> <li>• Support the district in providing materials such as presentations, handouts, and online interactive maps for the public's consumption.</li> <li>• Coordinate and summarize online feedback received from general public and internal planning team.</li> </ul>
Internal Planning Team	<ul style="list-style-type: none"> <li>• Consists of key school district administrators including central office, transportation, planning, and school principals.</li> <li>• Group will work to review draft options that are being developed in preparation to share with the School Board and public.</li> <li>• Review input provided from the consultant and general public regarding draft options and continue to modify maps with a focus on the best solution for all students as a whole.</li> <li>• Share a redistricting plan with the School Board</li> </ul>
General Public	<ul style="list-style-type: none"> <li>• Informed through website.</li> <li>• Invited to submit comments and input throughout the entire process..</li> <li>• Invited to participate in public information sessions (both virtual and in-person), and to provide input via surveys and online general feedback form.</li> </ul>
School Board	<ul style="list-style-type: none"> <li>• Charge internal planning team with its responsibilities.</li> <li>• Identify questions the planning team is expected to answer.</li> <li>• Advise staff and the process regarding policy related considerations and other board-level decisions.</li> </ul>

# Timeline

	May '24	June '24	July '24	Aug. '24	Sept. '24	Oct. '24	Nov. '24	Dec. '24
<i>Data Collection</i>								
<i>Data Analysis / Assimilation</i>								
<i>Baseline Options Development</i>								
<i>Internal Planning Team Work (1-2 meetings per month)</i>								
Public Information Session #1 : Present Project Process, Criteria, Timeline, and Redistricting Objectives to Community. Zoom webinar.				8/27				
Public Information Session #2: Present DRAFT Redistricting Options to General Public for Comment/Feedback. On-site meeting to review options and q/a at end of session. Location: Jerome High School Center for Performing Arts (8300 Hyland Croy Road, Dublin, OH 43016)						10/21		
<i>Presentation of Final Recommendations to the Board of Education</i>								12/9

# Project Objectives

Funded by the acceptance of the 2023 levy and bond issue, the Dublin City School District is undertaking a redistricting study to prepare for a new Elementary School (Bishop Elementary) that is currently scheduled to open at the start of the 2025-2026 school year.

Redistricting will focus on incorporating the new building, balancing existing student populations, and accommodating future enrollment growth.

The Dublin City Schools redistricting study is tasked with meeting the following key objectives:

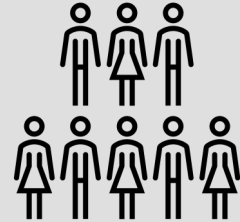
- To allocate an attendance zone for Bishop Elementary School scheduled to open in the Fall of 2025.
- To balance utilization/relieve overcrowding among the elementary schools within the study area.
- To make best efforts to ensure that Fall 2025 boundary changes align with long-term facilities and Elementary to Middle School feeder patterns.



# Redistricting Study Criteria



- Balance school facility utilization – Make every effort to have equitable utilization (where possible) across the district and in accordance with school capacities. Make efficient use of available space.



- Consider economic, cultural, and ethnic diversity – Ensure schools are inclusionary and not adversely affected by redistricting decisions.



- Close Proximity – Students should be assigned to the school within the closest proximity to their homes where possible.



- Maximize busing efficiencies in transportation of students – Make every effort to account for transportation (school bus and car rider), parent commuting patterns, balance busing travel time, and costs.



- Make every effort to establish contiguous zones – Avoid creating zones that are not connected to the primary attendance zone, where possible.



- Account for future growth – Allow for increasing attendance in high growth areas.



- Establish clear feeder patterns and continuity – Make every effort to establish a clear feeder pattern system.



- Use major roads and natural boundaries wherever feasible to define attendance zones – Minimize the number of students who need to cross major intersections and other barriers to maximize the safety and security of students

# IPT's Progress

## Work done to date

- Data and information examined includes school enrollment (grade level, attending school and counts in neighborhoods, demographics), school capacity, zoning maps, & future development trends.
- Meetings with staff and IPT members to review relevant data and draft options for consideration.
- Options are considered DRAFT throughout the process; continued dialog and consideration of data is always encouraged.

# IPT's Progress

## Work done to date

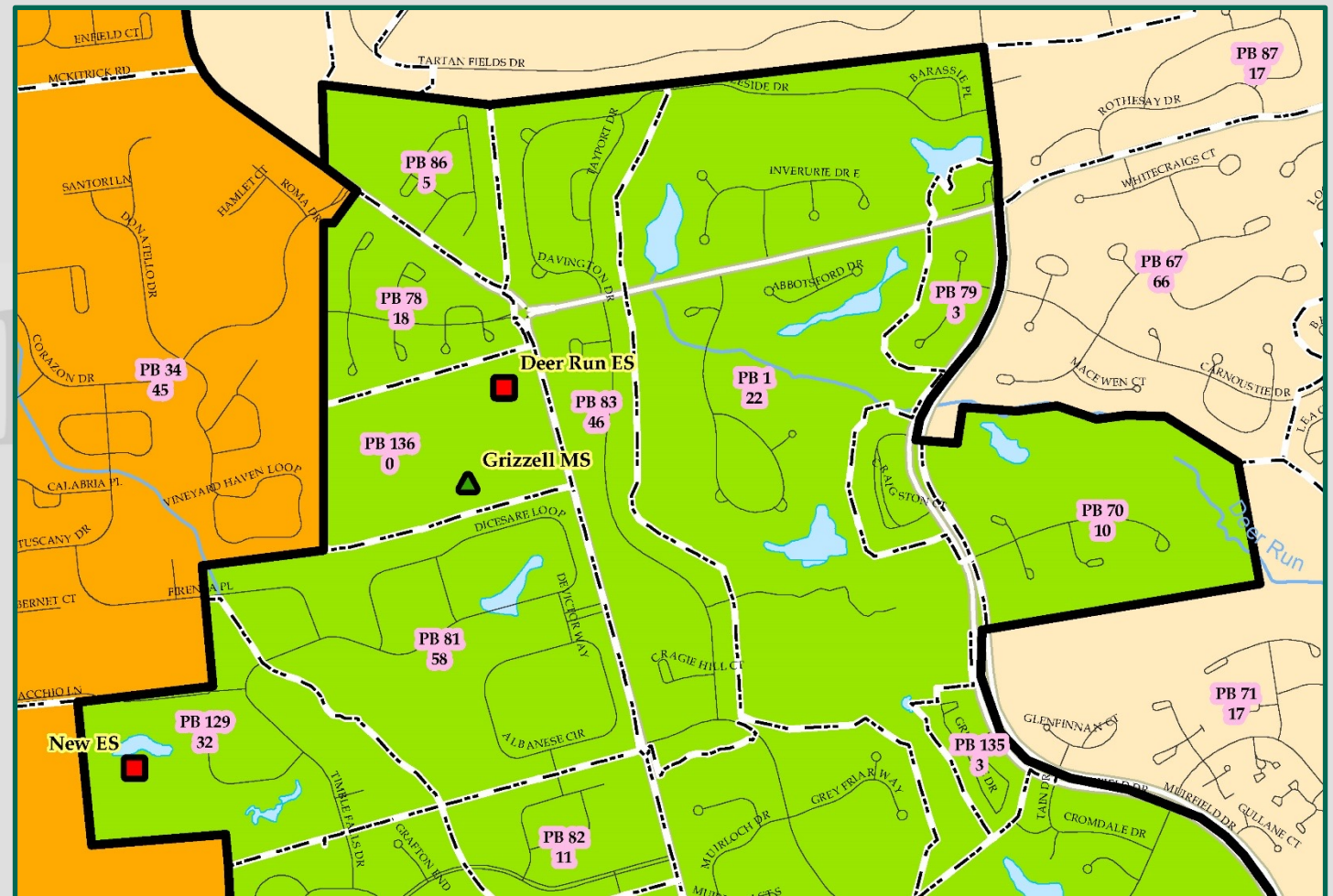
- IPT's charge is to recommend one option for the Superintendent to present to the Board of Education
- Nothing will be FINAL until the Superintendent makes his final recommendation to the Board of Education

# Interpreting Maps

## Page 7-19 of Background Report & Appendix A

Planning Blocks: small areas for examining student populations:

- Map titles and notes clarify what each planning block map represents.
- Labels within planning blocks represent one of the following:
  - Planning block ID (PB #) Map Note: Based on Fall 2023 Student Enrollment. The top labels show the Planning block ID (PB #). The bottom labels show the number of K-5 DCS students that live and attend their boundary school within the study area.



# Interpreting Tables

- Statistics that are pertinent to the study are made available to accompany the large maps.
- The data shown is the data the IPT uses to evaluate options.

# Interpreting Tables

## Enrollment and Utilization – Official October 2023 Enrollment

School	Grade Config	2023-24 Capacity	KG	01	02	03	04	05	06	07	08	2023-24 (Oct. 2023) Total Headcount K-12 Grade Enrollment	2023-24 (Oct. 2023) Total K-12 Enrollment Utilization		K-12 Live In	K-12 Out of Study Area or District
													+ / -	%		
Abraham Depp ES	K-5	670	112	144	155	158	131	131	0	0	0	831	161	124.0%	820	3
Deer Run ES	K-5	370	59	44	58	71	79	64	0	0	0	375	5	101.4%	372	0
Eli Pinney ES	K-5	552	75	95	110	105	106	108	0	0	0	599	47	108.5%	602	3
Glacier Ridge ES	K-5	600	81	97	105	94	85	123	0	0	0	585	-15	97.5%	589	1
<b>Total Study Area ES</b>		<b>2,192</b>	<b>327</b>	<b>380</b>	<b>428</b>	<b>428</b>	<b>401</b>	<b>426</b>	<b>0</b>	<b>0</b>	<b>0</b>	<b>2,390</b>	<b>198</b>	<b>109.0%</b>	<b>2,383</b>	<b>7</b>
Eversole Run MS	6-8	830	0	0	0	0	0	0	304	218	329	851	21	102.5%	834	1
Henry Karrer MS	6-8	830	0	0	0	0	0	0	272	307	256	835	5	100.6%	844	6
John Sells MS	6-8	920	0	0	0	0	0	0	264	231	241	736	-184	80.0%	723	14
Willard Grizzell MS	6-8	740	0	0	0	0	0	0	225	249	211	685	-55	92.6%	685	0
<b>Total Study Area MS</b>		<b>3,320</b>	<b>0</b>	<b>0</b>	<b>0</b>	<b>0</b>	<b>0</b>	<b>0</b>	<b>1,065</b>	<b>1,005</b>	<b>1,037</b>	<b>3,107</b>	<b>-213</b>	<b>93.6%</b>	<b>3,086</b>	<b>21</b>

Counts based on Official October 2023 Enrollment.

# Interpreting Tables

## Estimated Enrollment, Over/Under Capacity, & Utilization Tables

School	Option Capacity	2023-24 (Oct. 2023) Total Headcount K-12 Grade Enrollment	2023-24 (Oct. 2023) Total K-12 Enrollment Utilization		DRAFT Option Estimated Enrollment <sup>1</sup>	DRAFT Option Estimated Utilization <sup>1</sup>	
			+ / -	%		+ / -	%
Abraham Depp ES	670	831	161	124.0%	564	-106	84.2%
Deer Run ES	370	375	5	101.4%	304	-66	82.2%
Eli Pinney ES	552	599	47	108.5%	496	-56	89.9%
Glacier Ridge ES	600	585	-15	97.5%	471	-129	78.5%
Bishop ES (New ES)	700	0	0	0%	555	-145	79.3%
<b>Total Study Area ES</b>	<b>2,892</b>	<b>2,390</b>	<b>198</b>	<b>109.0%</b>	<b>2,390</b>	<b>-502</b>	<b>82.6%</b>
Eversole Run MS	830	851	21	102.5%	697	-133	84.0%
Henry Karrer MS	830	835	5	100.6%	804	-26	96.9%
John Sells MS	920	736	-184	80.0%	873	-47	94.9%
Willard Grizzell MS	740	685	-55	92.6%	733	-7	99.1%
<b>Total Study Area MS</b>	<b>3,320</b>	<b>3,107</b>	<b>-213</b>	<b>93.6%</b>	<b>3,107</b>	<b>-213</b>	<b>93.6%</b>

Counts based on Official October 2023 Enrollment.

<sup>1</sup> The estimated enrollment is calculated by adding the total students served that "Live In" a school zone within each new DRAFT Option, plus the total students that were "Out of Study Area or District" for the 2023-24 school year.

# Interpreting Tables

## Impact Tables

Student Impact Estimates	
Option	Total K-5 Live In Students Impacted
DRAFT ES Option	1,009
*Counts based on 2023-24 Student Enrollment.	

Student Impact Estimates	
Option	Total 6-8 Live In Students Impacted
DRAFT MS Option	364
*Counts based on 2023-24 Student Enrollment.	

2023-24 ES Boundary	DRAFT ES Option Boundary	Total K-5 Live In Students
Abraham Depp ES	Abraham Depp ES	475
Abraham Depp ES	Glacier Ridge ES	345
Deer Run ES	Deer Run ES	287
Deer Run ES	New ES	85
Glacier Ridge ES	Glacier Ridge ES	119
Glacier Ridge ES	New ES	470
Pinney ES	Abraham Depp ES	86
Pinney ES	Deer Run ES	17
Pinney ES	Glacier Ridge ES	6
Pinney ES	Pinney ES	493

DRAFT Option shown as sample. All tables included in handout.

Key: **Green** represents K-5th grade “Live In” students who live in the boundary and are not impacted by the option.

**Pink** represents the number of K-5th grade “Live In” students who live in the boundary and are impacted by the option.



# Interpreting Tables

## Feeder Pattern Tables

2023-24 ES Boundary	2023-24 MS Boundary	ES Attendance
Abraham Depp ES	Eversole Run MS	100%
Bailey ES	Grizzell MS	100%
Deer Run ES	Grizzell MS	100%
Glacier Ridge ES	Eversole Run MS	59%
Glacier Ridge ES	Karrer MS	41%
Indian Run ES	Karrer MS	57%
Indian Run ES	Sells MS	43%
Pinney ES	Eversole Run MS	64%
Pinney ES	Grizzell MS	36%
Scottish Corners ES	Karrer MS	100%
Thomas ES	Sells MS	100%
Wright ES	Sells MS	100%
Wyandot ES	Karrer MS	100%

2023-24 MS Boundary	2023-24 HS Boundary	MS Attendance
Eversole Run MS	Dublin Jerome HS	100%
Grizzell MS	Dublin Coffman HS	42%
Grizzell MS	Dublin Jerome HS	58%
Karrer MS	Dublin Coffman HS	62%
Karrer MS	Dublin Jerome HS	38%
Sells MS	Dublin Coffman HS	70%
Sells MS	Dublin Scioto HS	30%

Option	ES to MS Splits	MS to HS Splits
Current	3	3
<b>DRAFT Option</b>	3	3

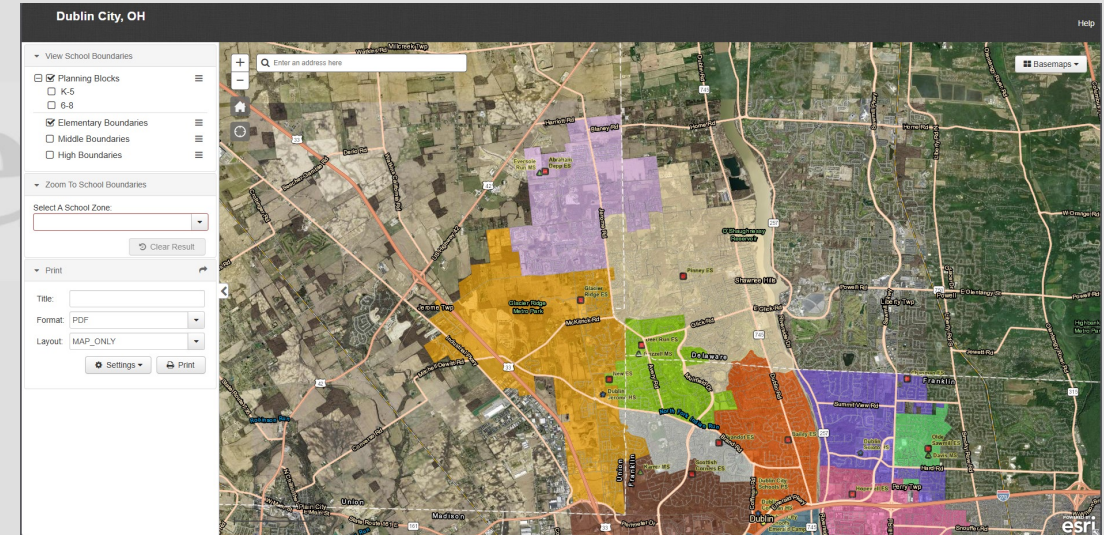
**\*This table highlights the total splits that exist in the boundary configuration. A split occurs when the progression of students from one ES/MS feeds into 2 or more MS/HS.**

DRAFT Option ES Boundary	DRAFT Option MS Boundary	ES Attendance
Abraham Depp ES	Eversole Run MS	100%
Bailey ES	Grizzell MS	70%
Bailey ES	Karrer MS	30%
Deer Run ES	Grizzell MS	100%
Glacier Ridge ES	Eversole Run MS	100%
Indian Run ES	Sells MS	100%
New ES	Grizzell MS	56%
New ES	Karrer MS	44%
Pinney ES	Eversole Run MS	60%
Pinney ES	Grizzell MS	40%
Scottish Corners ES	Karrer MS	100%
Thomas ES	Sells MS	100%
Wright ES	Sells MS	100%
Wyandot ES	Karrer MS	100%

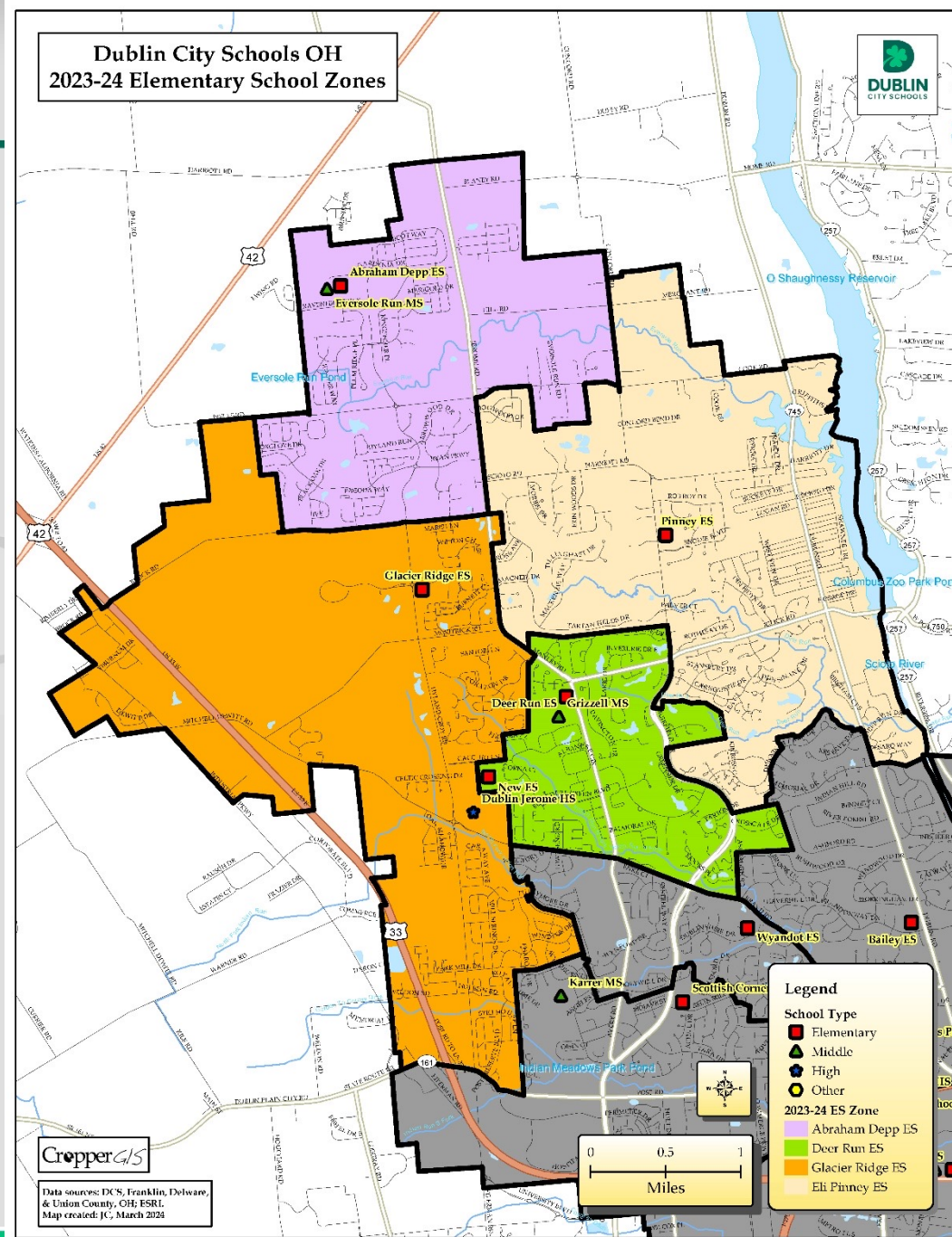
DRAFT Option MS Boundary	2023-24 HS Boundary	MS Attendance
Eversole Run MS	Dublin Jerome HS	100%
Grizzell MS	Dublin Coffman HS	27%
Grizzell MS	Dublin Jerome HS	73%
Karrer MS	Dublin Coffman HS	60%
Karrer MS	Dublin Jerome HS	40%
Sells MS	Dublin Coffman HS	75%
Sells MS	Dublin Scioto HS	25%

# Review of DRAFT Option

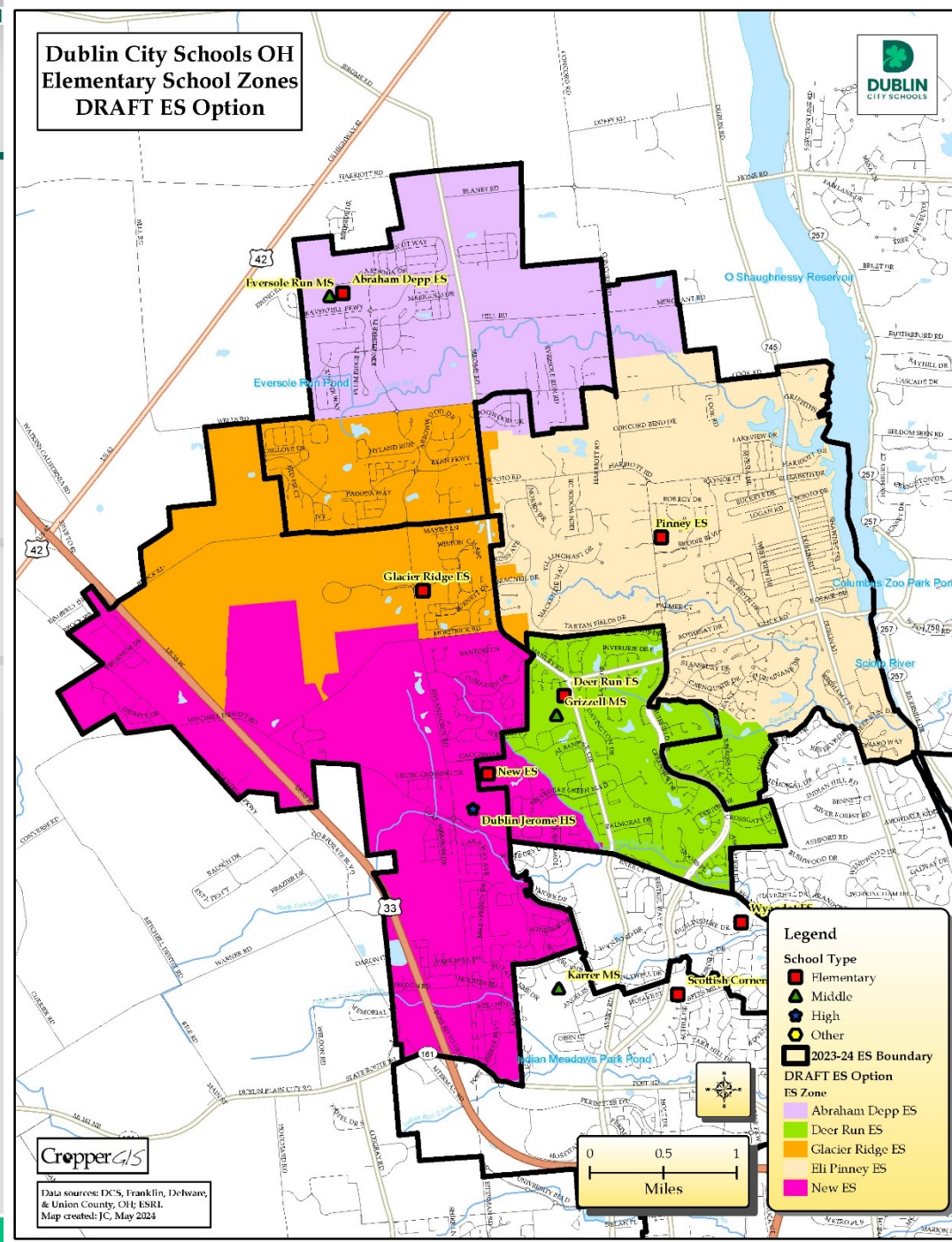
- 8.5"x11" maps, as well as plots of maps are available for review
- Option maps are also now on interactive Web  
[https://croppermap.com/dublincity\\_oh/](https://croppermap.com/dublincity_oh/)
- Copies of the handouts, including small and large format maps are posted on the Redistricting Study Website:  
[www.dcsredistricting.com](http://www.dcsredistricting.com)



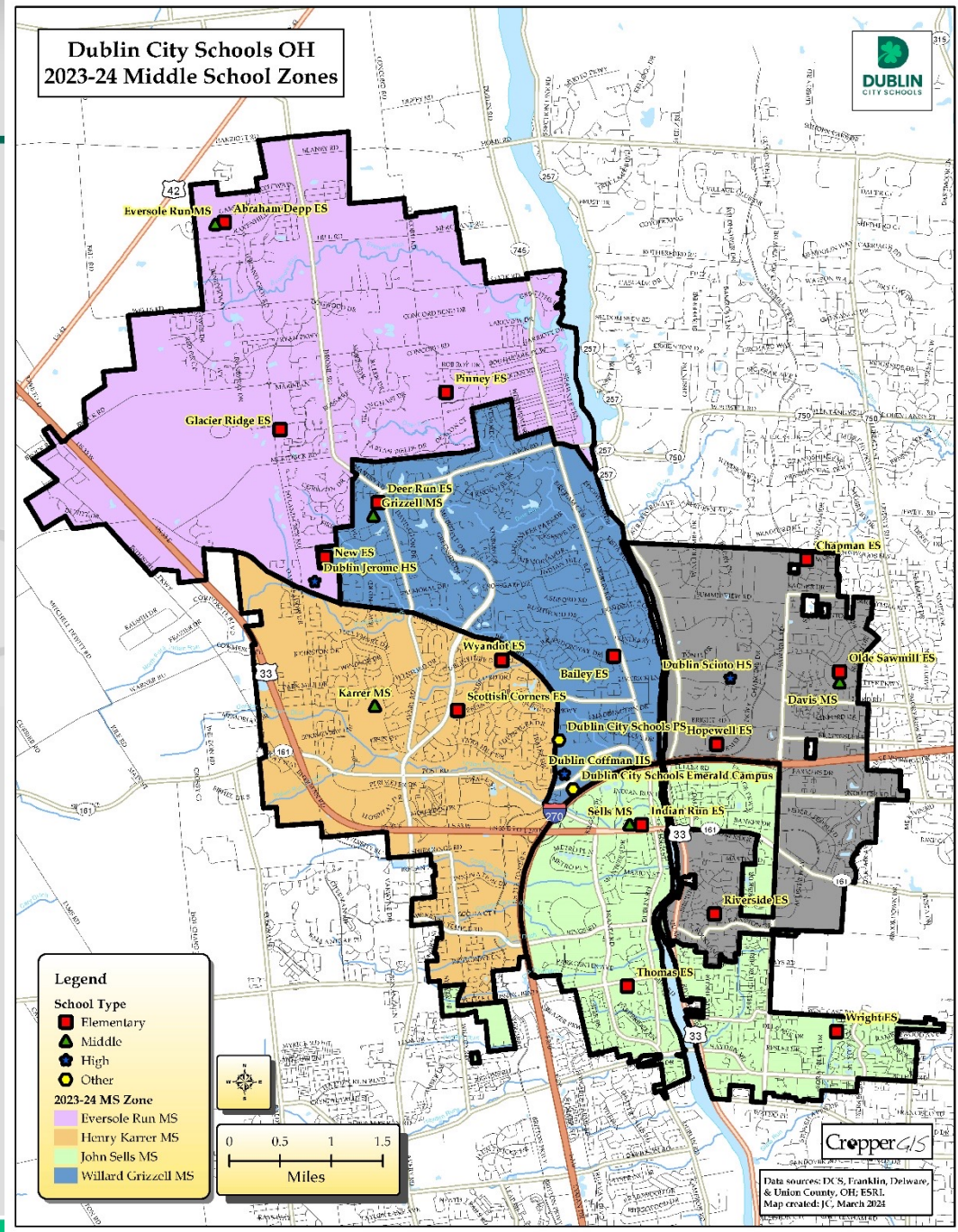
# Current ES Zones



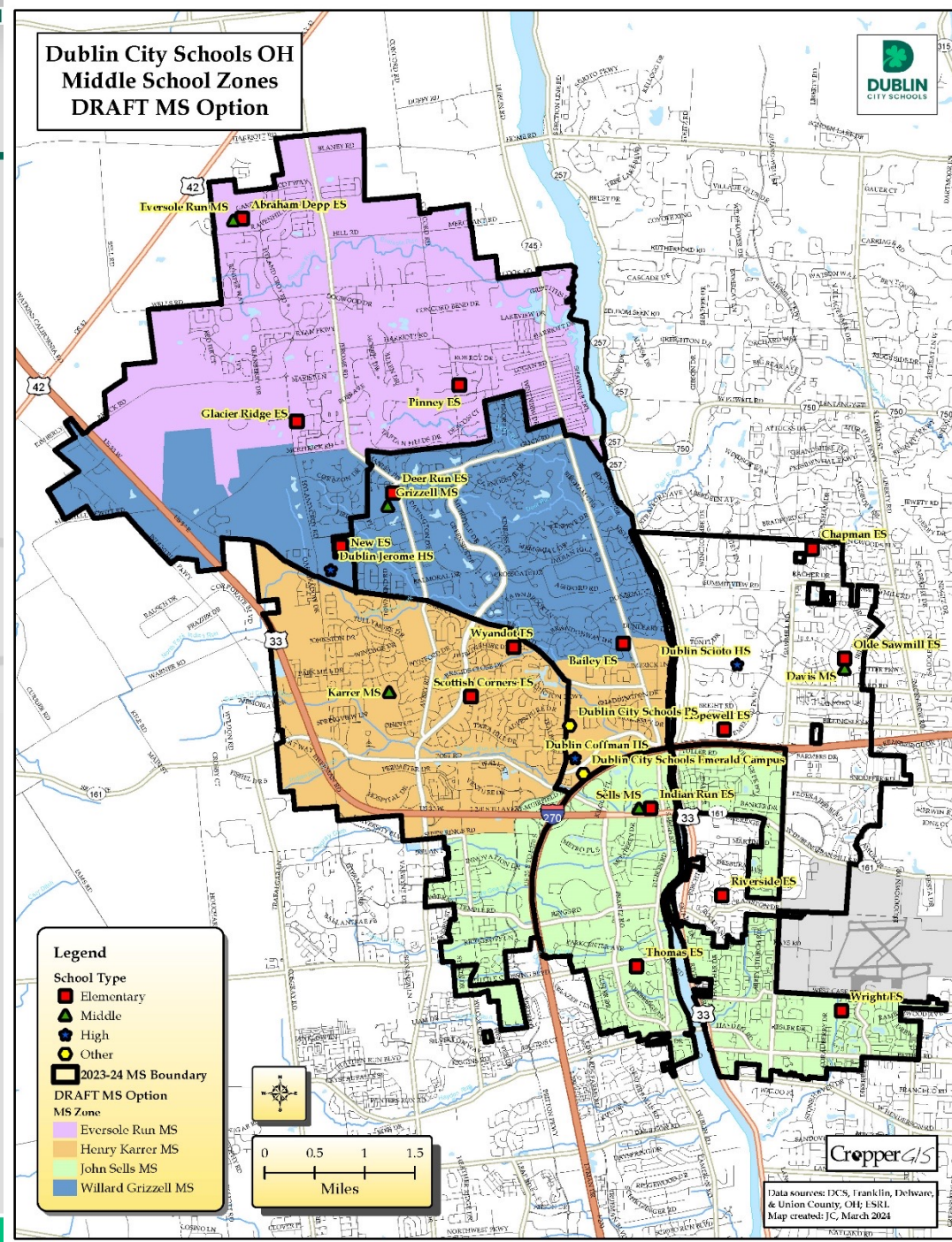
# DRAFT ES Option



# Current MS Zones



# DRAFT ES Option



# Tonight:

- *Detailed Review of Maps*– the end of the presentation will include a gallery walk to review the DRAFT Options and related data with members of the public.
- IPT members, DCS Staff, and consultant will be available after the presentation to answer questions the public may have
- Although answering any questions the night of the meeting is very important, please submit your feedback via the comment form on the Redistricting study website and/or via the online survey for the entire IPT's benefit

# Stay Informed – Provide Feedback

- Visit the Redistricting Study Web site at [dcsredistricting.com](https://dcsredistricting.com)
- Participate in an Online Survey from Oct. 21 – Nov. 3, 2024
  - Link is located on [dcsredistricting.com](https://dcsredistricting.com) or you can go directly [HERE](#)
  - You can also access the survey by referencing the QR code on this slide.
  - Available to translate to multiple languages.
  - Survey can be taken on any PC/Apple/mobile device with Internet access
- Although the formatted survey is preferred, you can also submit comments via the online [Dublin City Schools, OH - 2024 Redistricting Study General Feedback Form](#)
- Presentation of a Recommendation to the Board of Education is scheduled on December 9, 2024.

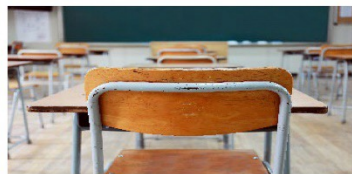






Now is the time to review  
the maps and statistics  
outside of the auditorium

Thank You for your time and  
participation!



Cropper G/S