



Red Areas: Remove tagged items and temporarily store in gym or cafeteria space. Protect gym and or cafeteria floor with Masonite. All material to be moved back into space and set back up the first week of august

ROOM USE LEGEND

AE	AV EQUIPMENT	M	MECHANICAL
AP	ASSISTANT PRINCIPAL	MC	MEDIA CENTER
B	BOILER	MDP	MEDIA PRODUCTION
BS	BOOK STORE	MP	OFFICE
BR	BAND ROOM	O	ORCHESTRA
C	CLASSROOM	P	PREP
CA	CAFETERIA	PN	PRINCIPAL
CC	COMPUTER CLASSROOM	PR	PRACTICE ROOM
CF	CONFERENCE ROOM	PS	PROPS ROOM
CL	CLINIC	RE	RECEIVING
CR	COPY ROOM	S	STORAGE
CS	COSTUME STORAGE	SG	STAGE
D	DENTITION	SL	SCIENCE LAB
E	ELECTRICAL	SR	SHOWER ROOM
ESL	ESL	ST	STAFF LOUNGE
FC	FREEZER/COOLER	SV	SERVERT
GM	GYMNASIUM	T	TOILET
HL	HOME LIVING	TE	TEACHERS ED
JC	JANITORS CLOSET	TR	TUTOR
K	KITCHEN	V	VESTIBULE
KR	KILN ROOM	VD	VOCAL/Drama
L	LOBBY	WC	WELCOME CENTER
LB	LAB	W	WORKROOM
LIB	LIBRARY		
LR	LOCKER ROOM		

BUILDING DATA

1. EXISTING SUPERVISED AUTOMATIC SPRINKLER SYSTEM.

2. CONSTRUCTION CLASSIFICATION TYPE II-000 (NFPA) & II-B (MBC)

3. USE CLASSIFICATION "E"



T M P ARCHITECTURE INC
1191 WEST SQUARE LAKE ROAD
BLOOMFIELD HILLS • MICHIGAN • 48302
PH • 248.338.4561 FX • 248.338.0223
EM • INFO@TMP-ARCHITECTURE.COM

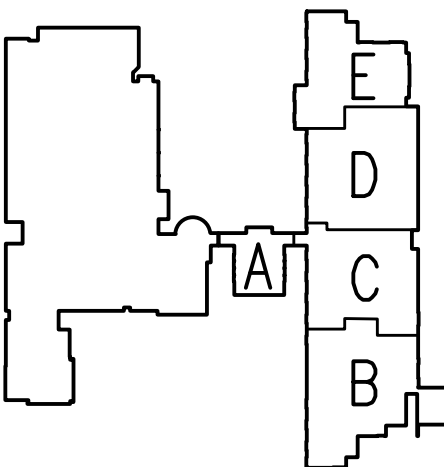
REGISTRATION SEAL

CONSULTANT

PROJECT TITLE
**Baker Middle School
Bid Package No. 1
Secure Entrance
Remodeling**

Troy School District
Troy, Michigan

DRAWING TITLE
Composite Floor Plan



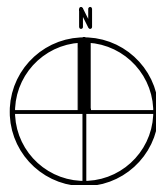
ISSUE DATES	
04-13-15	FINAL RECORD
05-15-14	CONSTRUCTION SET
04-04-14	BIDS
03-26-14	OWNER REVIEW
DATE:	ISSUED FOR:
DRAWN	PAD
CHECKED	JMM
APPROVED	JJC

PROJECT NO.

13169

DRAWING NO.

AC.1



COMPOSITE FLOOR PLAN
SCALE: 1/32" = 1'-0"



ROOM USE LEGEND

C

CLASSROOM

CA

CAFETERIA

CF

CONFERENCE ROOM

CO

COMMONS AREA

E

ELECTRICAL

GM

GYMNASIUM

HE

HEAD END ROOM

K

KITCHEN

LGI

LARGE GROUP INSTRUCTION

L

LOBBY

LK

LOCKERS

M

MECHANICAL

MC

MEDIA CENTER

N

NATATORIUM

O

OFFICE

RE

RECEIVING

S

STORAGE

SG

STAGE

SL

SCIENCE LAB

T

TOLLET

V

VESTIBULE

WC

WELCOME CENTER

W

WORKROOM

BUILDING DATA

1. NO SUPERVISED AUTOMATIC SPRINKLER SYSTEM

2. CONSTRUCTION CLASSIFICATION TYPE II-000 (NFPA) & II-B (MBC)

3. USE CLASSIFICATION "E"



T M P ARCHITECTURE INC
1191 WEST SQUARE LAKE ROAD
BLOOMFIELD HILLS - MICHIGAN - 48302
PH - 248.338.4561 FX - 248.338.0223
EA - INFO@TMPARCHITECTURE.COM

REGISTRATION SEAL

CONSULTANT

PROJECT TITLE
International Academy East Stage Upgrade Bid Package No 26

Troy School District
Troy, Michigan

DRAWING TITLE
First Level Composite Floor Plan

ISSUE DATES

-	-
-	-
-	-
-	-
-	-
-	-
-	-
-	-
-	-
-	-
-	-
10-9-19	BIDS

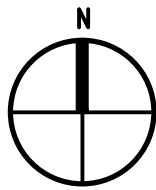
DATE:	ISSUED FOR:
DRAWN	JPW
CHECKED	JPW
APPROVED	JJC

PROJECT NO.

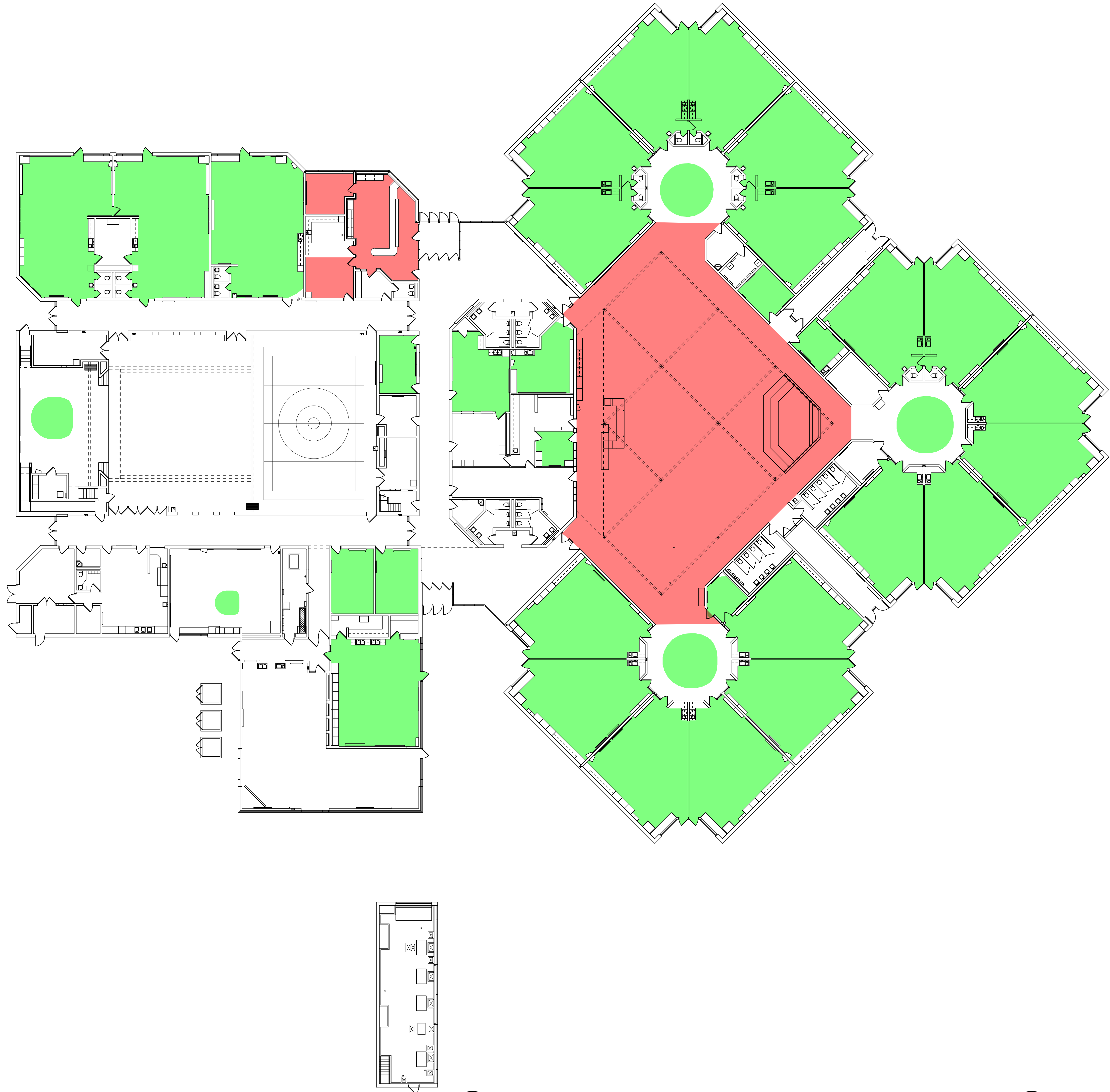
13175F

DRAWING NO.

AC.1



FIRST LEVEL COMPOSITE FLOOR PLAN
SCALE: 1/32" = 1'-0"



Green Areas: Remove and dispose of tagged items. Assume 30% of stock to be moved to another building in district

Red Areas: Remove tagged items and temporarily store in gym or cafeteria space. Protect gym and or cafeteria floor with Masonite. All material to be moved back into space and set back up the first week of august

ROOM USE LEGEND			
AS	ART STUDIO	O	OFFICE
C	CLASSROOM	PM	PRINCIPAL
CA	CAFETERIA	PTD	PTO
CF	CONFERENCE ROOM	RD	READING
CL	CLINIC	RE	RECEIVING
E	ELECTRICAL	S	STORAGE
GM	GYMNASIUM	SG	STAGE
HE	HEAD END	SP	SPEECH
K	KITCHEN	SW	SOCIAL WORKER
KR	KILN ROOM	T	TOILET
JC	JANITOR'S CLOSET	TL	TITLE 1
L	LOBBY	V	VESTIBULE
LD	LEARNING DEPARTMENT	W	WORKROOM
LG	LOUNGE	WC	WELCOME CENTER
LGI	LARGE GROUP INSTRUCTION		
M	MECHANICAL		
MS	MUSIC		
MC	MEDIA CENTER		

BUILDING DATA	
1.	NO SUPERVISED AUTOMATIC SPRINKLER SYSTEM
2.	CONSTRUCTION CLASSIFICATION TYPE II-000 (NFPA) & II-B (MBC)
3.	USE CLASSIFICATION "E"



T M P ARCHITECTURE INC
1391 WEST SQUARE LAKE ROAD
BLOOMFIELD HILLS • MICHIGAN • 48302
PH • 248.338.4561 FX • 248.338.0223
EM • INFO@TMP-ARCHITECTURE.COM

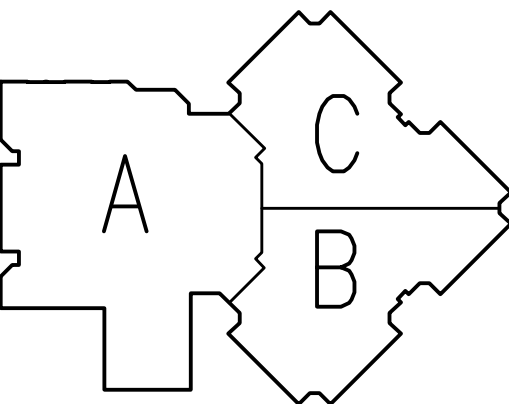
REGISTRATION SEAL

CONSULTANT

PROJECT TITLE
Barnard Elementary School Remodeling Bid Package No.18

Troy School District
Troy, Michigan

DRAWING TITLE
Composite Floor Plan



ISSUE DATES

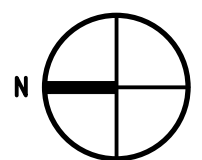
10-25-16	BIDS
DATE:	ISSUED FOR:
DRAWN	BJP
CHECKED	JPW
APPROVED	JJC

PROJECT NO.

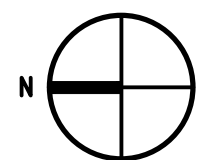
13157B.1

DRAWING NO.

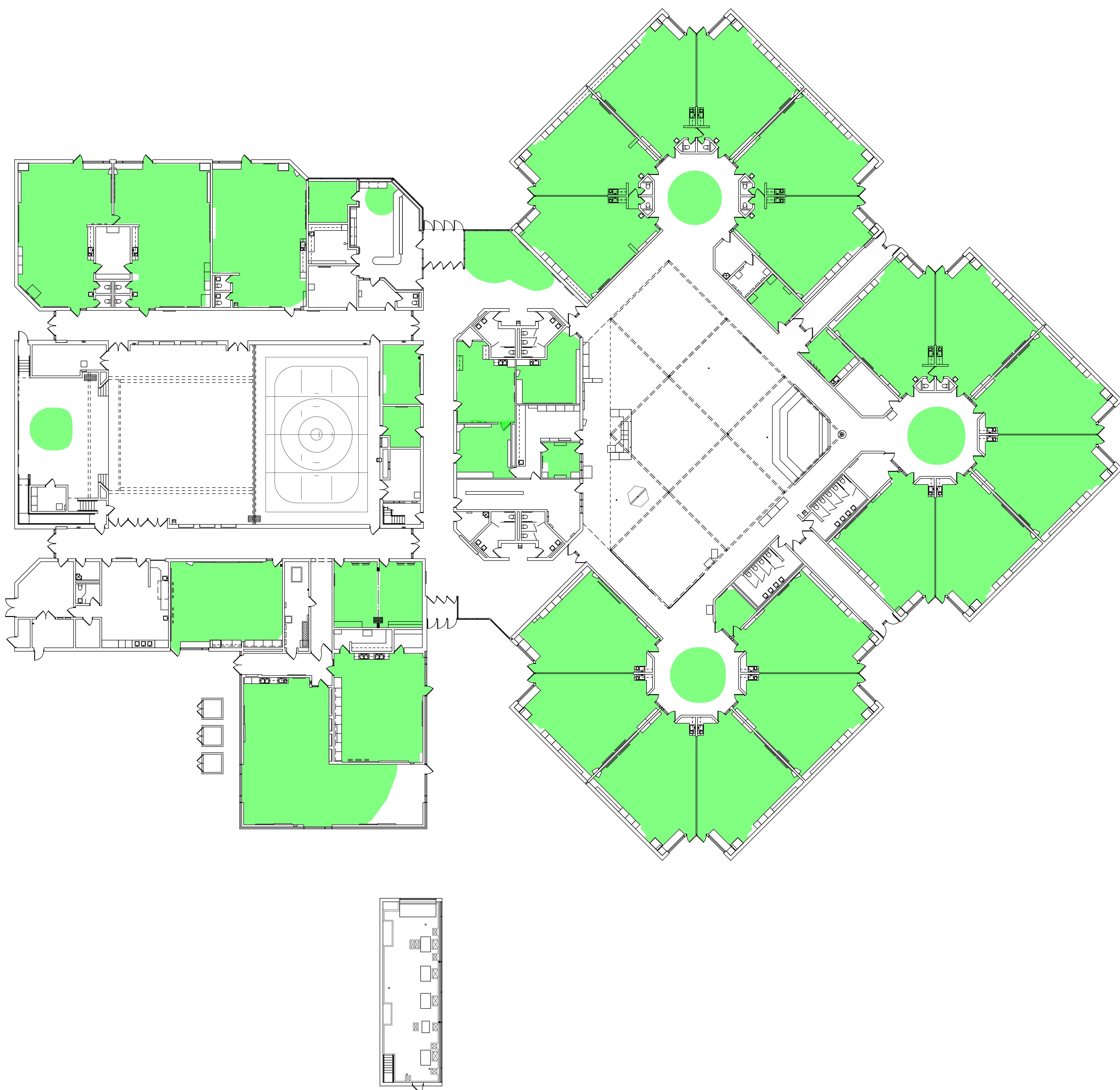
AC.1



COMPOSITE MEZZANINE PLAN
SCALE: 1/16" = 1'-0"



COMPOSITE FLOOR PLAN
SCALE: 1/16" = 1'-0"



Green Areas: Remove and dispose of tagged items. Assume 30% of stock to be moved to another building in district

ROOM USE LEGEND			
AS	ART STUDIO	O	OFFICE
C	CLASSROOM	PN	PRINCIPAL
CA	CAFETERIA	PTD	PTD
CF	CONFERENCE ROOM	RD	READING
CL	CLINIC	RE	RECEIVING
E	ELECTRICAL	S	STORAGE
GM	GYMNASIUM	SG	STAGE
HE	HEAD END	SP	SPEECH
K	KITCHEN	SW	SOCIAL WORKER
KR	KILN ROOM	T	TOILET
JC	JANITOR'S CLOSET	TL	TITLE 1
L	LOBBY	V	VESTIBULE
LD	LEARNING DEPARTMENT	W	WORKROOM
LG	LOUNGE	WC	WELCOME CENTER
LGI	LARGE GROUP INSTRUCTION		
M	MECHANICAL		
MS	MUSIC		
MC	MEDIA CENTER		

BUILDING DATA	
1.	NO SUPERVISED AUTOMATIC SPRINKLER SYSTEM
2.	CONSTRUCTION CLASSIFICATION TYPE II-000 (NFPA) & II-B (MBC)
3.	USE CLASSIFICATION "E"



TMP ARCHITECTURE INC
1391 WEST SQUARE LAKE ROAD
BLOOMFIELD HILLS • MICHIGAN • 48302
PH • 248.338.4561 FX • 248.338.0223
EM • INFO@TMP-ARCHITECTURE.COM

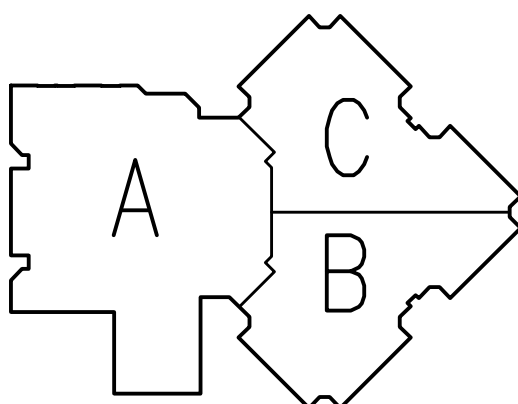
REGISTRATION SEAL

CONSULTANT

PROJECT TITLE
Bemis Elementary School Remodeling Bid Package No.26

Troy School District
Troy, Michigan

DRAWING TITLE
Composite Floor Plan



ISSUE DATES	
10-9-19	BIDS
DATE:	ISSUED FOR:
DRAWN	JPW
CHECKED	JPW
APPROVED	JJC

PROJECT NO.

13158C

DRAWING NO.

AC.1

COMPOSITE MEZZANINE PLAN
SCALE: 1/16" = 1'-0"

COMPOSITE FLOOR PLAN
SCALE: 1/16" = 1'-0"

ROOM USE LEGEND			
C	CLASSROOM	LG	LOUNGE
CA	CAFETERIA	LGB	LARGE GROUP INSTRUCTION
CC	COMPUTER CLASSROOM	M	MECHANICAL
CF	CONFERENCE ROOM	MC	MEDIA CENTER
CL	CLINIC	O	OFFICE
CO	COMMONS AREA	RD	READING
CP	COPY ROOM	R	RECEIVING
E	ELECTRICAL	S	STORAGE
GM	GYMNASIUM	SG	STAGE
HE	HEAD END ROOM	T	TOILET
K	KITCHEN	V	VESTIBULE
JC	JANITOR'S CLOSET	WC	WELCOME CENTER
L	LOBBY	W	WORKROOM

BUILDING DATA	
1.	NO SUPERVISED AUTOMATIC SPRINKLER SYSTEM
2.	CONSTRUCTION CLASSIFICATION TYPE I-000 (NFPA) & II-B (MBC)
3.	USE CLASSIFICATION "E"



T M P ARCHITECTURE INC

1191 WEST SQUARE LAKE ROAD
BLOOMFIELD HILLS • MICHIGAN • 48302
PH • 248.338.4561 FX • 248.338.0223
EM • INFO@TMP-ARCHITECTURE.COM

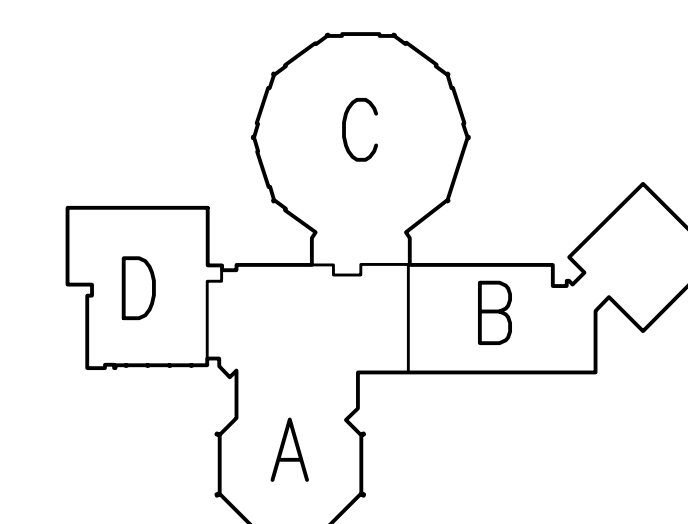
REGISTRATION SEAL

CONSULTANT

PROJECT TITLE
**Hill Elementary
School
Remodeling
Bid Package No 26**

Troy School District
Troy, Michigan

DRAWING TITLE
Composite Floor Plan



ISSUE DATES

*		*
<hr/>		
*		*
<hr/>		
*		*
<hr/>		
*		*
<hr/>		
*		*
<hr/>		
*		*
<hr/>		
* *		*
<hr/>		
*		*
<hr/>		
*		*
<hr/>		
*		*
<hr/>		

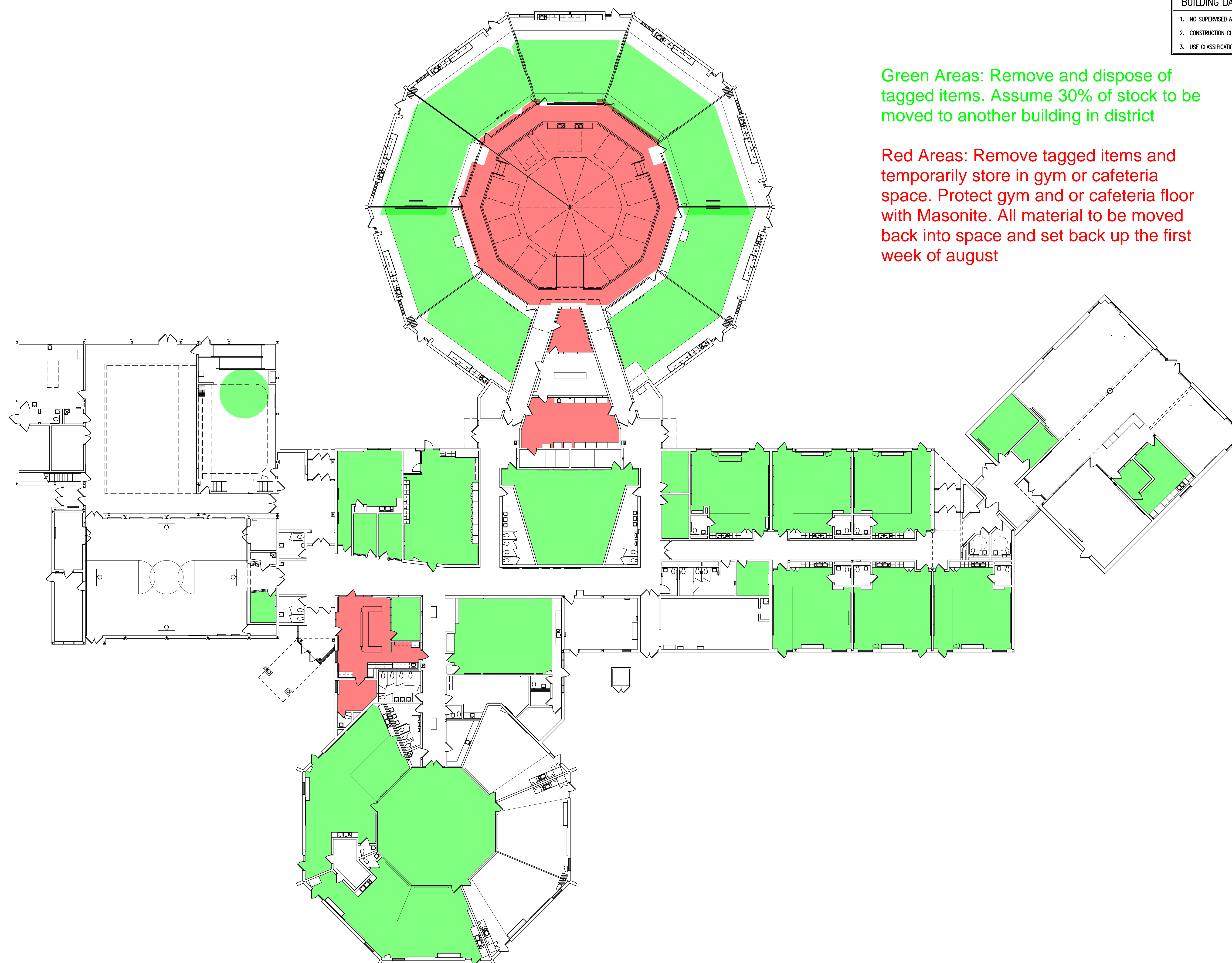
DATE:	ISSUED FOR:
DRAWN	JPW
CHECKED	JPW
APPROVED	JJC

PROJECT NO.

13161A

DRAWING NO.

AC.1



Green Areas: Remove and dispose of tagged items. Assume 30% of stock to be moved to another building in district

Red Areas: Remove tagged items and temporarily store in gym or cafeteria space. Protect gym and or cafeteria floor with Masonite. All material to be moved back into space and set back up the first week of august

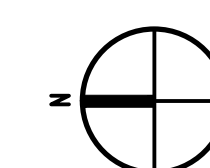


COMPOSITE FLOOR PLAN
SCALE: 1/16" = 1'-0"

SCALE: 1/16" = 1'-



Green Areas: Remove and dispose of tagged items. Assume 30% of stock to be moved to another building in district



FIRST LEVEL COMPOSITE FLOOR PLAN
SCALE: 1/16" = 1'-0"



TMP ARCHITECTURE INC
1191 WEST SQUARE LAKE ROAD
BLOOMFIELD HILLS • MICHIGAN • 48302
PH • 248.338.4561 FX • 248.338.0223
EM • INFO@TMP-ARCHITECTURE.COM

REGISTRATION SEAL

CONSULTANT

PROJECT TITLE
**Martell Elementary
School
Stage Upgrade
Bid Package No 26**

Troy School District
Troy, Michigan

DRAWING TITLE
**First Level
Composite Floor Plan**

ISSUE DATES

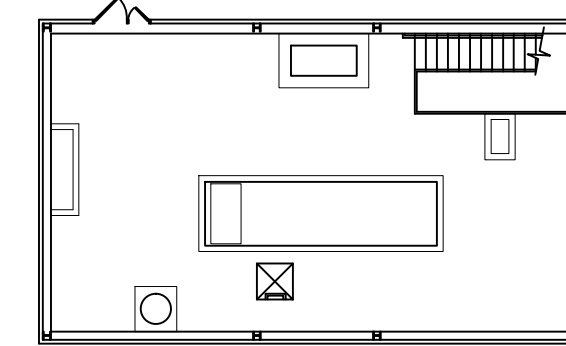
.	.
.	.
.	.
.	.
.	.
.	.
.	.
.	.
.	.
.	.
10-9-19	BIDS

DATE ISSUED FOR:

DRAWN	.
CHECKED	.
APPROVED	.

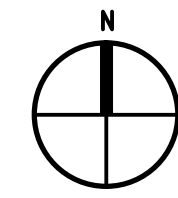
PROJECT NO.
13163D

DRAWING NO.
AC.1



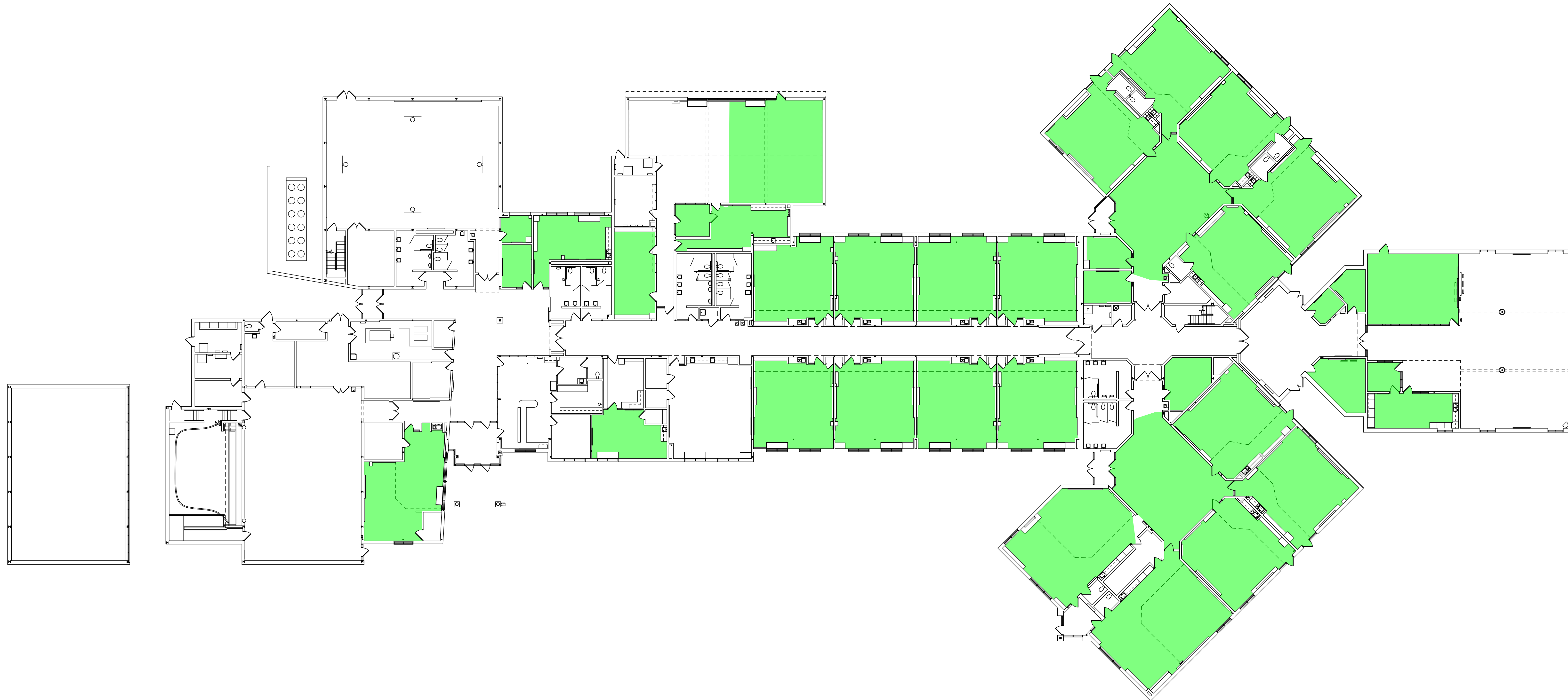
ROOM USE LEGEND			
AG	ART STUDIO	JC	JANITOR'S CLOSET
AV	AUDIO VISUAL	LGR	LARGE GROUP INSTRUCTIONAL
B	BOILER	L	LOUNGE
C	CLASSROOM	M	MECHANICAL
CA	CATERERIA	MC	MEDIA CENTER
CC	COMPUTER CLASSROOM	MZ	MEZZANINE
CF	CONFERENCE ROOM	O	OFFICE
CL	CLINIC	RD	READING
CO	COMMONS AREA	S	STORAGE
E	ELECTRICAL	SO	STAGE
GM	GYMNASIUM	T	TOILET
HE	HEAT EXCH. ROOM	V	VESTIBULE
K	KITCHEN	WC	WELCOME CENTER
KR	KILN ROOM	W	WORKROOM

BUILDING DATA	
1.	SUPERVISED AUTOMATIC SPRINKLER SYSTEM (THROUGHOUT)
2.	CONSTRUCTION CLASSIFICATION TYPE I-000 (NFPA) & I-B (MBC)
3.	USE CLASSIFICATION "E"



COMPOSITE MEZZANINE PLAN
SCALE: 1/16" = 1'-0"

Green Areas: Remove and dispose of tagged items. Assume 30% of stock to be moved to another building in district



T M P A R C H I T E C T U R E I N C
1191 WEST SQUARE LAKE ROAD
BLOOMFIELD HILLS • MICHIGAN • 48302
PH • 248.338.4561 FX • 248.338.0223
EM • INFO@TMP-ARCHITECTURE.COM

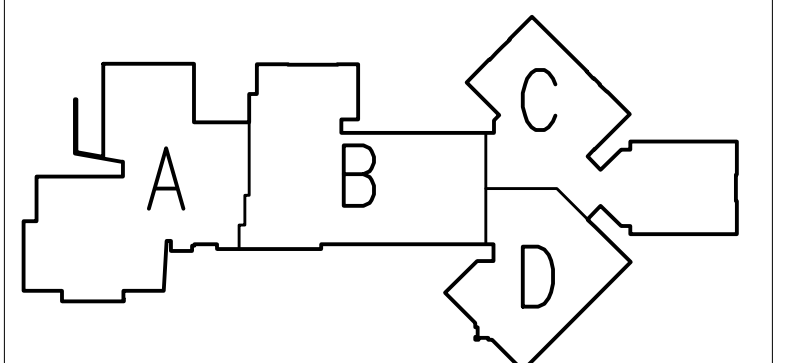
REGISTRATION SEAL

CONSULTANT

PROJECT TITLE
**Morse Elementary
School
Remodeling
Bid Package No.21**

Troy School District
Troy, Michigan

DRAWING TITLE
Composite Floor Plan



ISSUE DATES

[illegible]

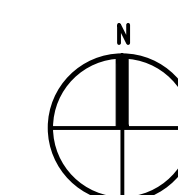
DATE:	ISSUED FOR:
DRAWN	JPW
CHECKED	JPW
APPROVED	JJC

PROJECT NO.

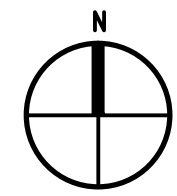
13164A

DRAWING NO.

AC.1



COMPOSITE FLOOR PLAN
SCALE: 1/16" = 1'-0"



MEZZANINE COMPOSITE PLAN
SCALE: 1/16" = 1'-0"



Green Areas: Remove and dispose of tagged items. Assume 30% of stock to be moved to another building in district

ROOM USE LEGEND			
AR	ART ROOM	M	MECHANICAL
C	CLASSROOM	MC	MEDIA CENTER
CA	CAFETERIA	O	OFFICE
CC	COMPUTER CLASSROOM	RE	RECEIVING
CF	CONFERENCE ROOM	RS	RESOURCES
CL	CLINIC	SW	SOCIAL WORK
E	ELECTRICAL	S	STORAGE
GM	GYMNASIUM	SG	STAGE
K	KITCHEN	T	TOILET
KR	KILN ROOM	TC	TECH CLOSET
JC	JANITOR'S CLOSET	V	VESTIBULE
LGI	LARGE GROUP INSTRUCTION	WC	WELCOME CENTER
LG	LOUNGE	W	WORKROOM

BUILDING DATA	
1.	NO SUPERVISED AUTOMATIC SPRINKLER SYSTEM
2.	CONSTRUCTION CLASSIFICATION TYPE II-000 (NFPA) & II-B (MBC)
3.	USE CLASSIFICATION "E"



TMP ARCHITECTURE INC
1191 WEST SQUARE LAKE ROAD
BLOOMFIELD HILLS • MICHIGAN • 48302
PH • 248.338.4561 FX • 248.338.0223
EM • INFO@TMP-ARCHITECTURE.COM

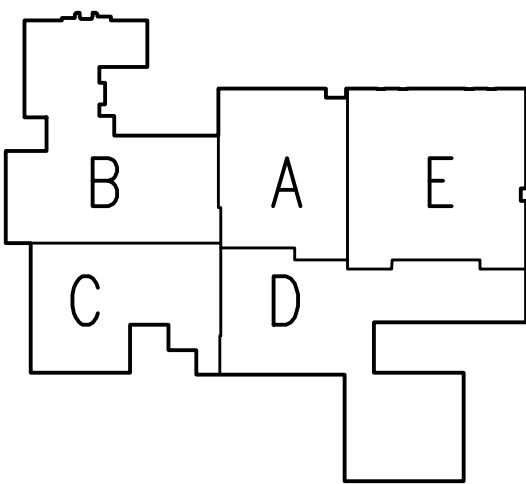
REGISTRATION SEAL

CONSULTANT

PROJECT TITLE
**Troy Union
Elementary School
Remodeling
Bid Package No. 23**

Troy School District
Troy, Michigan

DRAWING TITLE
Composite Floor Plans



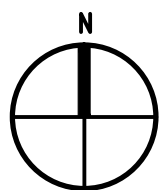
ISSUE DATES

DATE	ISSUED FOR:
10-17-2018	BIDS

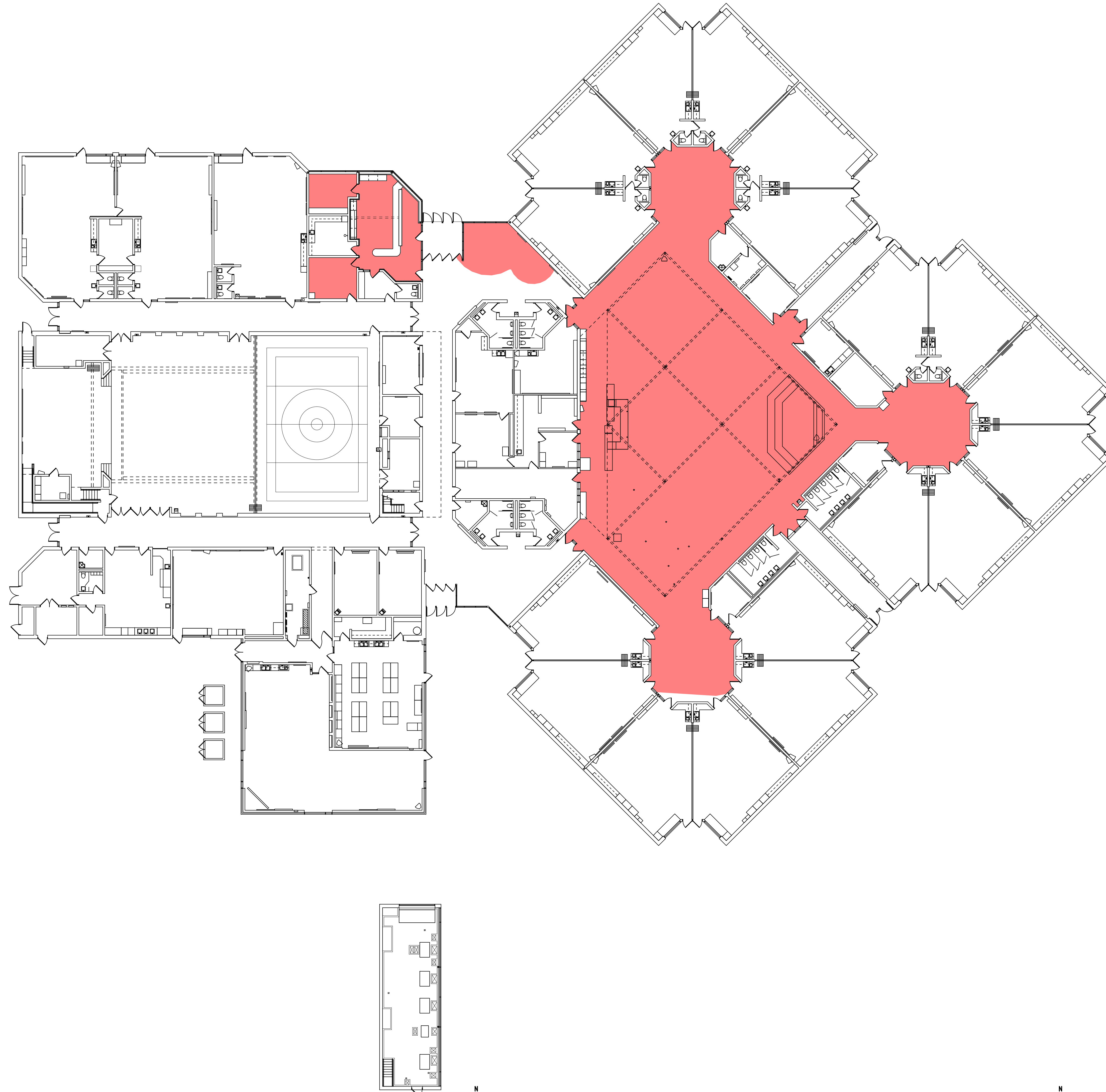
DRAWN	CMS
CHECKED	JPW
APPROVED	JJC

PROJECT NO.
13166A

DRAWING NO.
AC.1



FIRST LEVEL COMPOSITE FLOOR PLAN
SCALE: 1/16" = 1'-0"



Red Areas: Remove tagged items and temporarily store in gym or cafeteria space. Protect gym and or cafeteria floor with Masonite. All material to be moved back into space and set back up the first week of august

ROOM USE LEGEND			
AS	ART STUDIO	O	OFFICE
C	CLASSROOM	PH	PRINCIPAL
CA	CAFETERIA	PTO	PTO
CF	CONFERENCE ROOM	RD	READING
CL	CLINIC	RE	RECEIVING
E	ELECTRICAL	S	STORAGE
GM	GYMNASIUM	SG	STAGE
HE	HEAD END	SP	SPEECH
K	KITCHEN	SW	SOCIAL WORKER
KR	KILN ROOM	T	TOILET
JC	JANITOR'S CLOSET	TL	TITLE 1
L	LOBBY	V	VESTIBULE
LD	LEARNING DEPARTMENT	W	WORKROOM
LG	LOUNGE	WC	WELCOME CENTER
LGI	LARGE GROUP INSTRUCTION		
M	MECHANICAL		
MS	MUSIC		
MC	MEDIA CENTER		

BUILDING DATA	
1.	NO SUPERVISED AUTOMATIC SPRINKLER SYSTEM
2.	CONSTRUCTION CLASSIFICATION TYPE II-000 (NFPA) & II-B (MBC)
3.	USE CLASSIFICATION "E"



T M P ARCHITECTURE INC
1191 WEST SQUARE LAKE ROAD
BLOOMFIELD HILLS • MICHIGAN • 48302
PH • 248.338.4561 FX • 248.338.0223
EM • INFO@TMP-ARCHITECTURE.COM

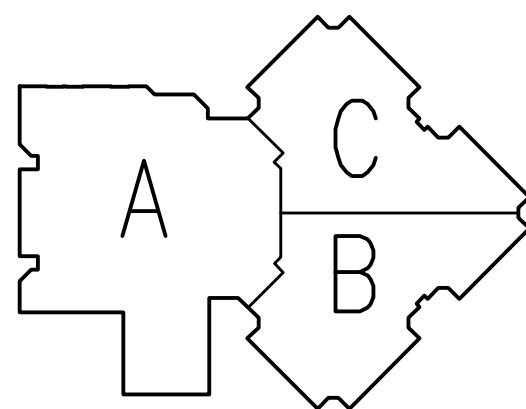
REGISTRATION SEAL

CONSULTANT

PROJECT TITLE
Wass Elementary School Remodeling Bid Package No.18

Troy School District
Troy, Michigan

DRAWING TITLE
**Composite Floor Plan
Composite Mezzanine Plan**



ISSUE DATES

DATE	ISSUED FOR:
10-25-16	BIDS

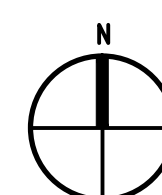
DRAWN	JPW
CHECKED	JPW
APPROVED	JUC

PROJECT NO.

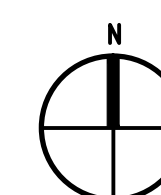
13167A.1

DRAWING NO.

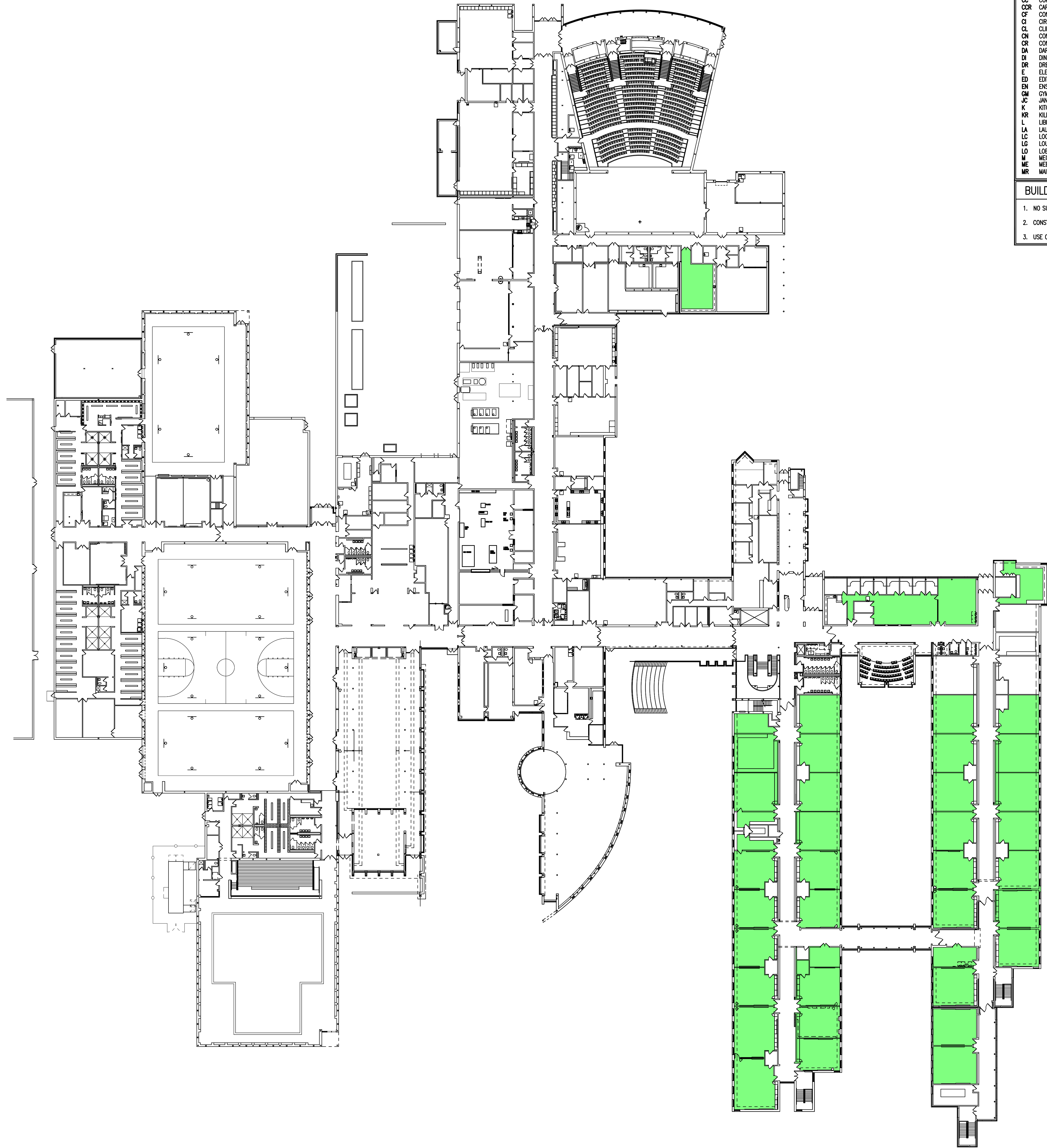
AC.1



COMPOSITE MEZZANINE PLAN
SCALE: 1/16" = 1'-0"



COMPOSITE FLOOR PLAN
SCALE: 1/16" = 1'-0"



ROOM USE LEGEND	
A AUDITORIUM	O OFFICE
AS ART STUDIO	P PANTRY
AU AUTO SHOP	PA PASSAGE
C CLASSROOM	PO POOL
CC COMPUTER CLASSROOM	PR PRACTICE
CCR CAREER CENTER	R REHEARSAL
CF CONFERENCE ROOM	RE RECEPTION
CI CIRCULATION	REC RECEIVING
CL CLINIC	S STORAGE
CN CONCESSIONS	SE SPECIAL EDUCATION
CR CONTROL ROOM	SEM SEMINAR ROOM
DA DARK ROOM	SS STAGE
DI DINING ROOM	SH SHOWER ROOM
DR DRESSING ROOM	SS SCENE SHOP
E ELECTRICAL	SST SCHOOL STORE
ED EDITING ROOM	ST STAIR
EN ENSEMBLE	SV SERVERY
GM GYMNASIUM	T TOILET
JC JANITOR'S CLOSET	TE TELEPHONE
K KITCHEN	TEA TEAM ROOM
KR KILN ROOM	TEL TELECOMMUNICATION
L LIBRARY	TO TIME OUT
LA LAUNDRY	TR TECH ROOM
LC LOCKER ROOM	TRA TRAINING ROOM
LG LOUNGE	V VESTIBULE
LO LOBBY	W WORKROOM
M MECHANICAL	WA WAITING
ME MEETING ROOM	WR WEIGHT ROOM
MR MAIL ROOM	Y YEARBOOK

BUILDING DATA	
1. NO SUPERVISED AUTOMATIC SPRINKLER SYSTEM	
2. CONSTRUCTION CLASSIFICATION TYPE II-000 (NFPA) & II-B (MBC)	
3. USE CLASSIFICATION "E"	



T M P ARCHITECTURE I N C
1191 WEST SQUARE LAKE ROAD
BLOOMFIELD HILLS • MICHIGAN • 48302
PH • 248.338.4561 FX • 248.338.0223
EM • INFO@TMP-ARCHITECTURE.COM

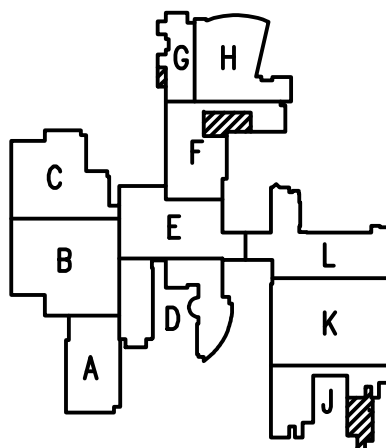
REGISTRATION SEAL

CONSULTANT

PROJECT TITLE
**Troy High School
Remodeling
Bid Package No.23**

**Troy School District
Troy, Michigan**

DRAWING TITLE
**Second Level
Composite Floor Plan**



ISSUE DATES

10-17-2018 BIDS

DATE ISSUED FOR:

DRAWN CMS

CHECKED JPW

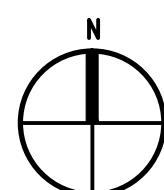
APPROVED JUC

PROJECT NO.

13174F

DRAWING NO.

AC.2



SECOND LEVEL COMPOSITE FLOOR PLAN
SCALE: 1/32" = 1'-0"