



STOUGHTON AREA SCHOOL DISTRICT EXECUTIVE SUMMARY

PROVIDED BY FINDORFF

City of Stoughton, Wisconsin 12/20/24

River Bluff Campus

Snow is falling in Stoughton as construction continues across the district! Finishes are underway in the River Bluff addition. Painting in the gym and drywall mud & tape in the corridors both began this week, and tile in the restrooms is slated to begin next week. Overhead mechanical, electrical, plumbing, and fire protection (MEPF) rough-ins are complete. The exterior brick masonry is officially complete on the River Bluff addition and installation of window frames and glazing continues.

At the District Office, Findorff masons are working on the west elevation of the building setting embeds in the existing wall to receive the new steel structure. The masons are also set up along the east elevation of the building setting the new brick façade.

Yahara Site

The Past Few Weeks:

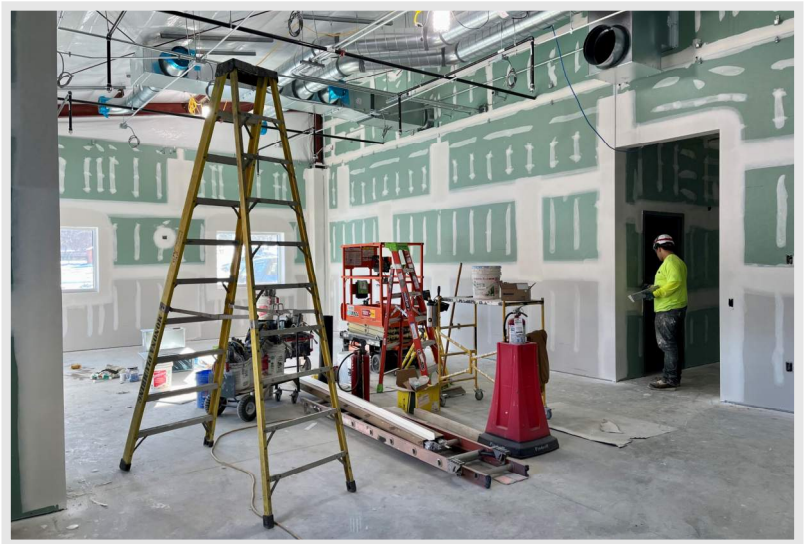
- Drywall complete in shop/garage & office spaces
- Tape and paint underway
- Plywood wall coverings in shop/garage complete
- Mechanical air handling units set
- Ceramic tile install underway

Coming Up!:

- Epoxy flooring in shop/garage restrooms to begin
- Plumbing fixture install following tile
- Ceiling grid install to begin
- Overhead sectional door install to begin
- Paint to be completed



Above: a photo highlighting the initial paint progress in the River Bluff Middle School addition gym



Above: a view of the overall progress in the maintenance tech meeting and break room in the new Maintenance Building

DID YOU KNOW?

As we look forward into the new year, the exciting work across the Stoughton Area School District will continue! Planning is already underway for summer 2025 renovation projects at Fox Prairie and Sandhill elementary schools along with continued work at the High School and River Bluff Campus.

Questions?

Senior Project Manager, Matt Claggett / 608.729.2155 / mclaggett@findorff.com

Findorff
BUILDING & BEYOND



STOUGHTON AREA SCHOOL DISTRICT EXECUTIVE SUMMARY

PROVIDED BY FINDORFF

City of Stoughton, Wisconsin 12/20/24

High School Commons

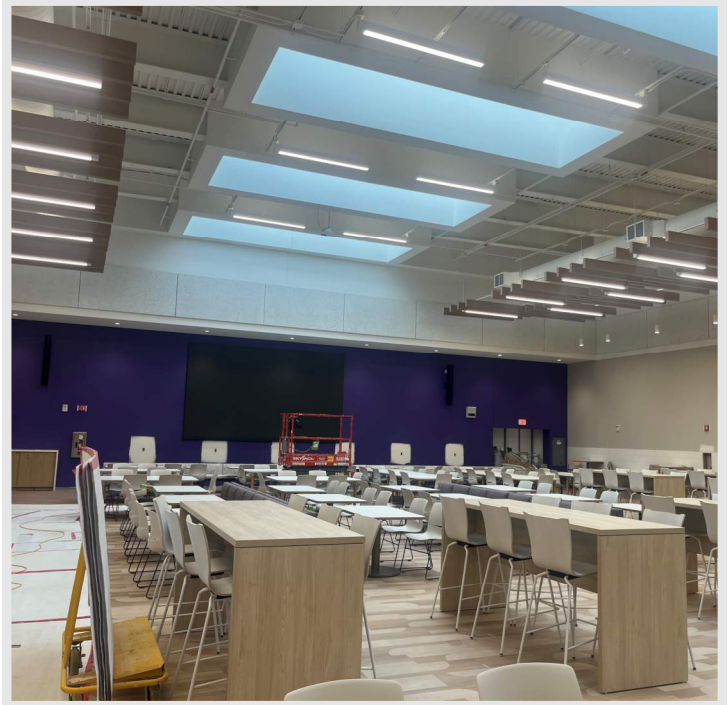
This past week the High School Commons and Student Lounge received its furniture! This includes a medley of booths, benches, tables and high tops. Furthermore, the AV equipment has been installed and tested. This leaves only a few remaining punch list items to wrap up before the space is ready for turn over after Winter Break!

Classrooms and Storage

Work in classroom spaces continue throughout the High School. Crews work quickly to install the new flooring, ceilings, and light fixtures after demo is complete to ensure the spaces are turned back over promptly to the district. The Food Storage space is also receiving new FRP wall coverings and an epoxy floor which will ensure a food safe environment with a modern look.

What's Next?

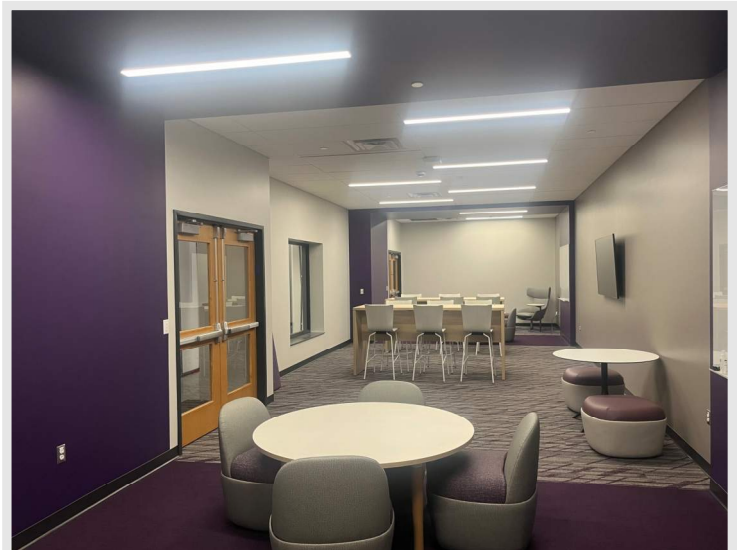
The music wing classrooms and spaces will be the next area to see upgrades to the floors, ceilings, and lights. The music wing will also benefit from electrical and mechanical upgrades.



Top Right: a sneak peak of the Commons spaces following furniture install, also see the new AV screen fixed on the back wall of the space



Bottom Left: a look into a classroom as it undergoes floor, ceiling, and lighting replacements



Bottom Right: a peak into the new Student Lounge highlighting the new furniture and finishes to the space

Questions?

Senior Project Manager, Matt Claggett / 608.729.2155 / mclaggett@findorff.com

Findorff
BUILDING & BEYOND



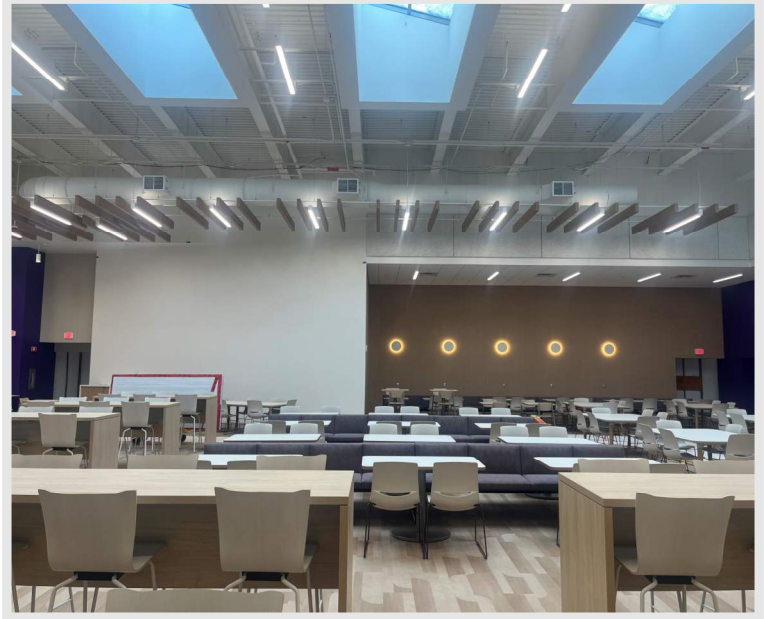
STOUGHTON AREA SCHOOL DISTRICT EXECUTIVE SUMMARY

PROVIDED BY FINDORFF

City of Stoughton, Wisconsin 12/20/24



Top Left: a view of the exterior progress at the River Bluff addition as glazing is installed and following the completion of brick



Top Right: another sneak peak of the High School Commons space following furniture install



Below: a view of the progress in the River Bluff addition entrance and corridor space as drywall tape & finish begins

Questions?

Senior Project Manager, Matt Claggett / 608.729.2155 / mclaggett@findorff.com

Findorff
BUILDING & BEYOND