

CAT #2 Recap

School Finance

John Espy, Treasurer/CFO

How do we compare among all Ohio public school districts?

Spend

62% of Ohio schools spend more than LCS

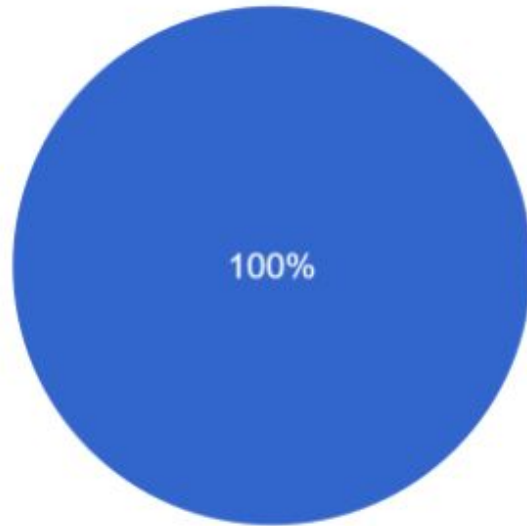
Teachers

97% of Ohio schools have more teachers per student than LCS

Administrators

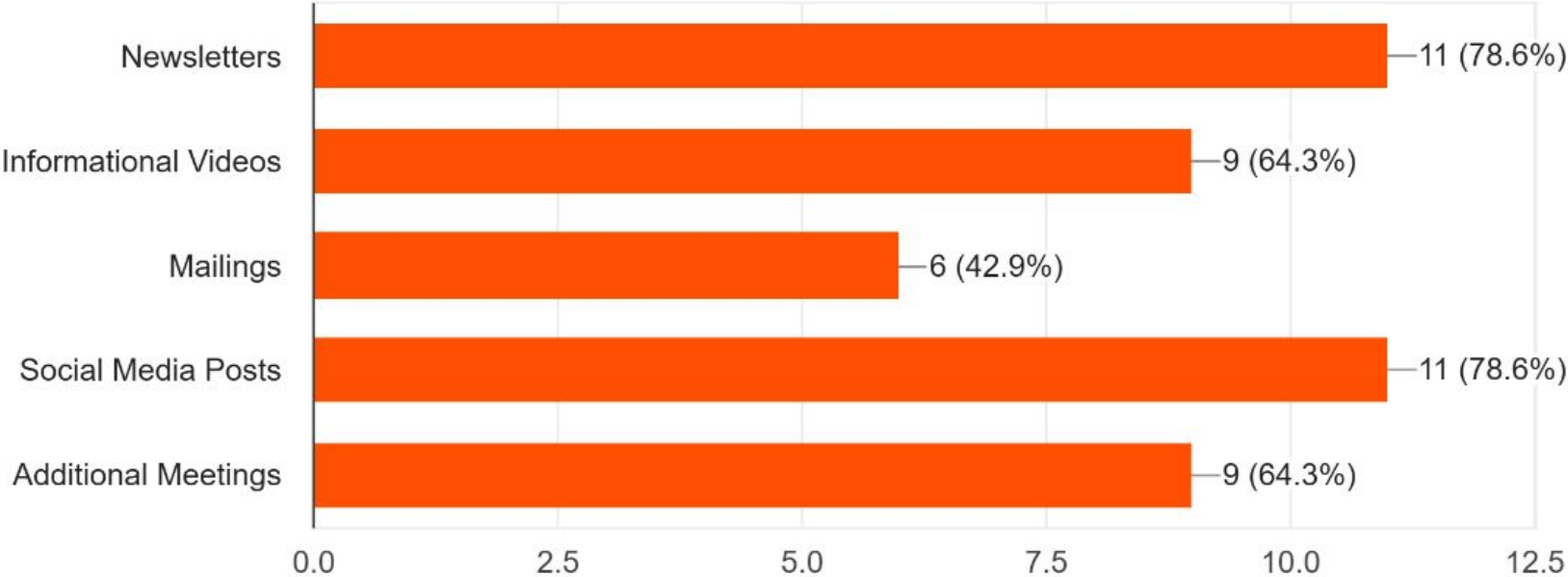
96% of Ohio schools have more admin per student than LCS

I have a better understanding of LCS Finances

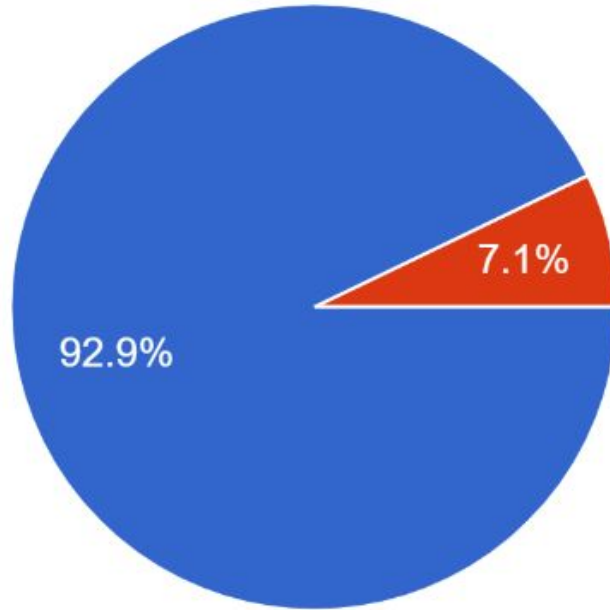


- Agree
- Disagree

What strategies should LCS use to educate the community about finances?



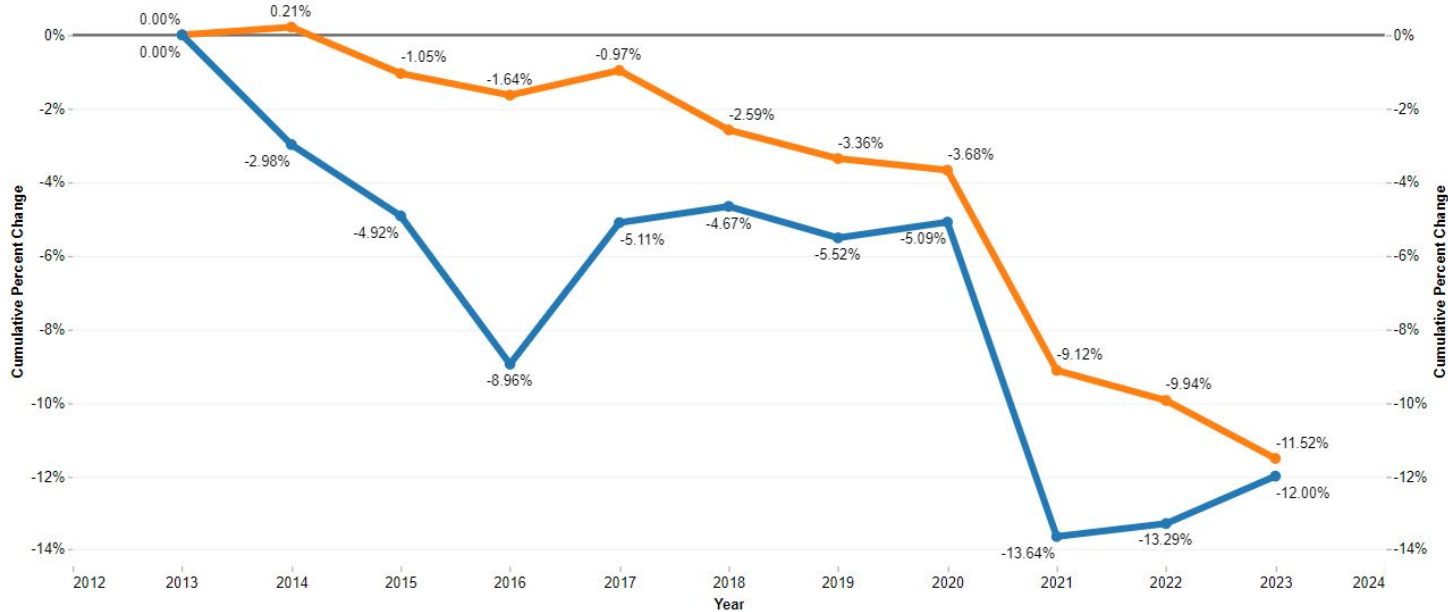
LCS advocates for solutions to the district's unique state school funding challenges.



- Agree
- Disagree

Staffing Levels vs. Enrollment Levels

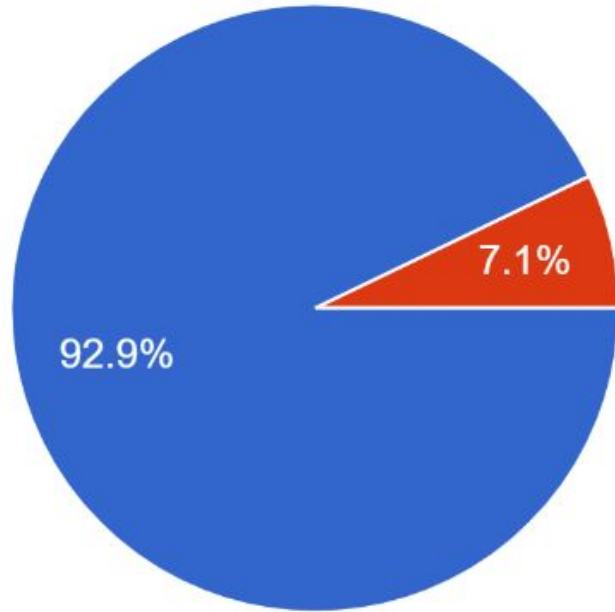
Source: ODE School Enrollment and EMIS Staff Data Records



- Enrollment has fallen 12% over 10 years, while staffing has fallen 12%
- Recent enrollment projections are in line with current state enrollment trends

Measure Names
● % Difference in District Enrollment
● % Difference in FTE

Do you feel LCSD has worked to keep staffing levels in line with student enrollment?



- Agree
- Disagree

LCS Financial Commitments

1. Ongoing **external funding** sources
2. **Change the current structure** of state funding
3. Looking for internal process change to **extend time** asking the community for additional funding