

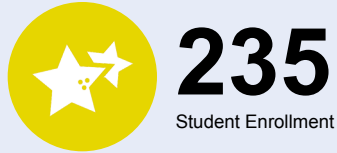


# OREGON AT-A-GLANCE SCHOOL PROFILE

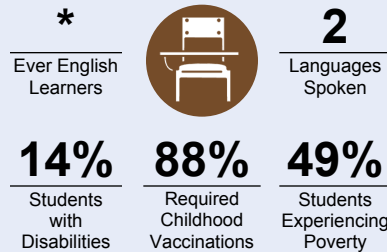
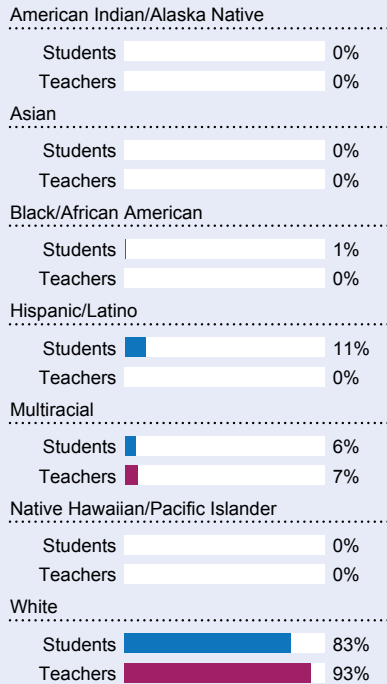
## Sams Valley Elementary School

PRINCIPAL: Tammie Collom | GRADES: K-5 | 14235 Table Rock Rd, Central Point 97502 | 541-494-6870

### Students We Serve



### DEMOGRAPHICS

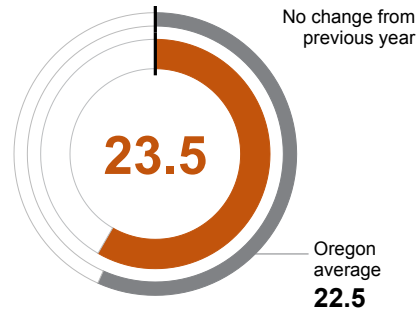


\*<10 students or data unavailable

### School Environment

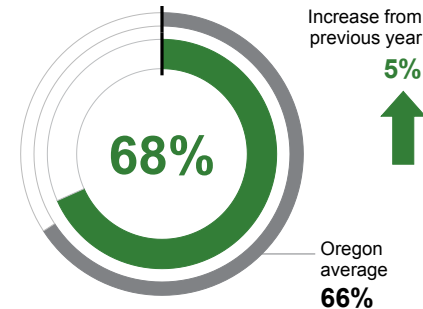
#### CLASS SIZE

Median class size.



#### REGULAR ATTENDERS

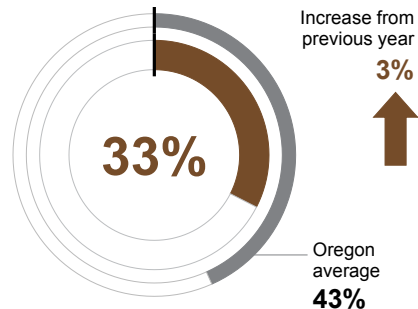
Students who attended more than 90% of their enrolled school days.



### Academic Success

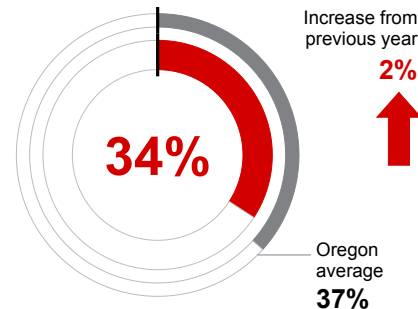
#### ENGLISH LANGUAGE ARTS

Students meeting state grade-level expectations.



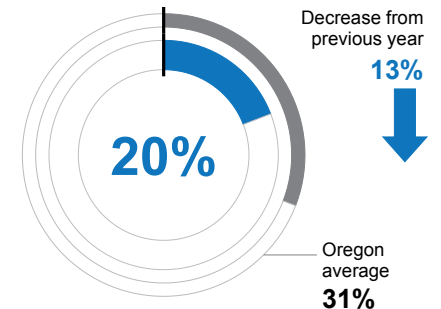
#### MATHEMATICS

Students meeting state grade-level expectations.



#### SCIENCE

Students meeting state grade-level expectations.



### School Goals

Our school goals focused on increasing student academic achievement, student engagement supported by project-based learning, and character education. An emphasis on core values and character traits promoted a positive school culture for students.

### State Goals

The Oregon Department of Education is collaborating with school districts and communities across the state to achieve a 90% on-time graduation rate by 2027. Grounded in the pillars of Academic Excellence, Belonging and Wellness, and Reimagined Accountability, ODE prioritizes evidence-based practices to boost early literacy, attendance, and student engagement. We are committed to closing opportunity and achievement gaps for marginalized students and securing long-term success for all of Oregon's learners by investing in culturally responsive practices, fostering inclusive environments and always driving for continuous improvement.

### Safe & Welcoming Environment

Parents, students, and the community will feel welcome as partners in our students' education. Working in collaboration with parents, enriched learning experiences were accomplished. We continue to strive for a positive school culture inclusive of all learners and stakeholders.



# OREGON AT-A-GLANCE SCHOOL PROFILE CONTINUED

## Sams Valley Elementary School



2023-24

### Outcomes

#### Our Staff (rounded FTE)



**12**

Teachers



**11**

Educational assistants



**0**

Counselors/  
Psychologists/  
Social Workers



**97%**

Average teacher retention rate over the past three years



**100%**

% of licensed teachers with more than 3 years of experience



**Yes**

Same principal in the last 3 years

#### REGULAR ATTENDERS

American Indian/Alaska Native	<10 students or data unavailable
Asian	<10 students or data unavailable
Black/African American	<10 students or data unavailable
Hispanic/Latino	50%
Multiracial	<10 students or data unavailable
Native Hawaiian/Pacific Islander	<10 students or data unavailable
White	70%
Students Experiencing Poverty	65%
Ever English Learner	<10 students or data unavailable
Students with Disabilities	70%
Migrant	<10 students or data unavailable
Homeless	89%
Students in Foster Care	<10 students or data unavailable
Military Connected	<10 students or data unavailable
Talented and Gifted	<10 students or data unavailable
Female	68%
Male	69%
Non-Binary	<10 students or data unavailable

#### ENGLISH LANGUAGE ARTS

<10 students or data unavailable
<10 students or data unavailable
<10 students or data unavailable
42%
<10 students or data unavailable
<10 students or data unavailable
<10 students or data unavailable
33%
17%
<10 students or data unavailable
5%
<10 students or data unavailable
<10 students or data unavailable
<10 students or data unavailable
<10 students or data unavailable
<10 students or data unavailable
47%
20%
<10 students or data unavailable

#### MATHEMATICS

<10 students or data unavailable
<10 students or data unavailable
<10 students or data unavailable
33%
<10 students or data unavailable
<10 students or data unavailable
36%
19%
<10 students or data unavailable
<5%
<10 students or data unavailable
<10 students or data unavailable
<10 students or data unavailable
<10 students or data unavailable
<10 students or data unavailable
34%
34%
<10 students or data unavailable

#### About Our School

##### BULLYING, HARASSMENT, AND SAFETY POLICIES

School safety is a priority on campus. It is everyone's responsibility to stop bullying behavior. Sams Valley staff will not tolerate conduct that undermines a person's right to feel safe, respected, and to learn. Bullying and harassment concerns are addressed with two main goals in mind: to maintain safety and order, and teach the skill(s) needed to prevent the unwanted behavior from reoccurring. Staff crisis training continues to guide our preparation to maintain safety and order using the ALICE protocol. PurposeFULL People is our Social Emotional Learning program which helps us develop a safe school environment for all.

##### EXTRACURRICULAR ACTIVITIES

- YMCA After School Program
- Jr. Comet Sports
- Student Council
- Rogue Valley Farm to School
- Archery Club
- Yearbook Club

##### PARENT ENGAGEMENT

Parent engagement is encouraged and supported at Sams Valley Elementary. Our goal is to collaborate with parents to increase active participation, involvement, and engagement throughout our school. Through curriculum and digital communication, parents are provided with resources to support engagement. In addition, parents are encouraged to participate in school events. Sams Valley Elementary specifically uses Parent Square, Facebook and Instagram to help engage parents in their child's learning experience.

##### COMMUNITY ENGAGEMENT

We partner with local business and resources to provide students with learning opportunities in connection with our community:

- Police and Fire Department
- LaClinica
- YMCA
- Rogue Valley Farm to School
- Crater Foundation
- Sams Community Organization
- Crater Works

We also connect our students and community by working together to support families in need of clothing, food, and school supplies.