



OREGON AT-A-GLANCE SCHOOL PROFILE

Patrick Elementary School

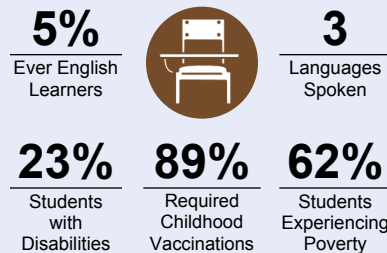
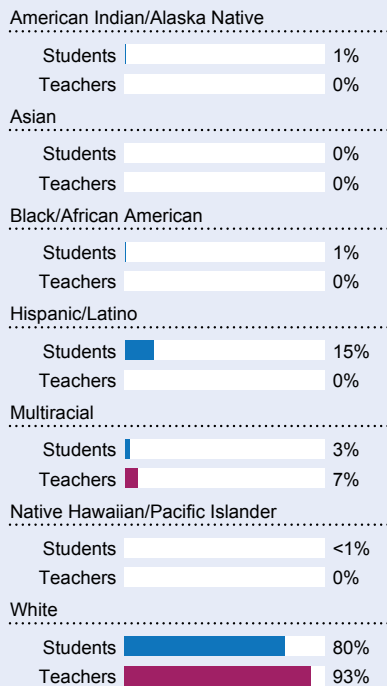
PRINCIPAL: Michelle Cook | GRADES: K-5 | 1500 2nd Ave, Gold Hill 97525 | 541-494-6840



Students We Serve



DEMOGRAPHICS

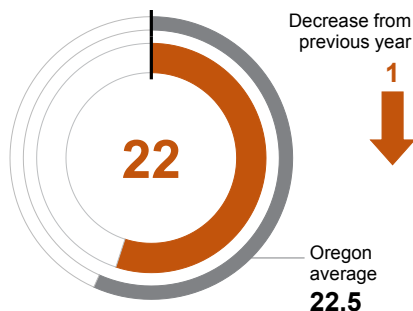


*<10 students or data unavailable

School Environment

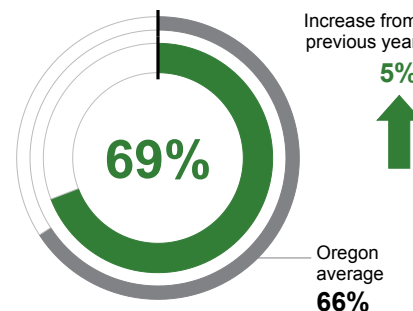
CLASS SIZE

Median class size.



REGULAR ATTENDERS

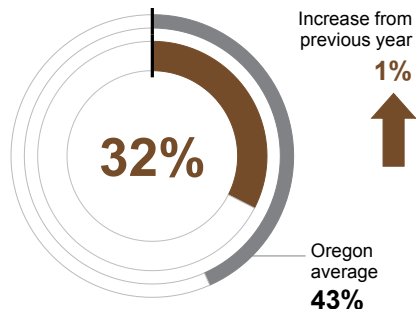
Students who attended more than 90% of their enrolled school days.



Academic Success

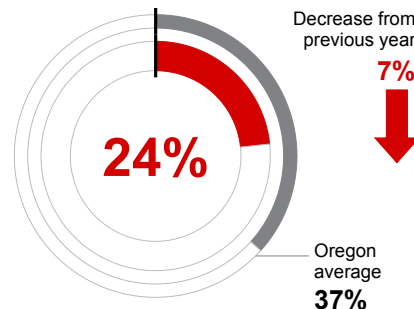
ENGLISH LANGUAGE ARTS

Students meeting state grade-level expectations.



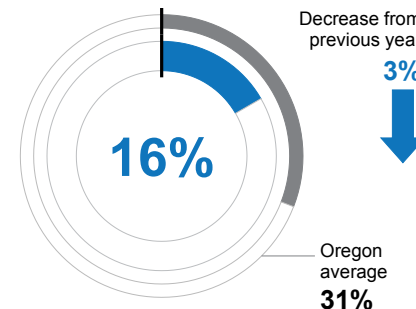
MATHEMATICS

Students meeting state grade-level expectations.



SCIENCE

Students meeting state grade-level expectations.



School Goals

Our school goals focused on increasing student academic achievement, student engagement supported by project-based learning, and character education. A common math and reading curriculum contributed to increased academic achievement in Reading and Math. High levels of student engagement observed during project-based learning experiences, including STEM Maker's Carts and weekly mini-courses. An emphasis on core values and character traits promoted a positive school culture for students.

State Goals

The Oregon Department of Education is collaborating with school districts and communities across the state to achieve a 90% on-time graduation rate by 2027. Grounded in the pillars of Academic Excellence, Belonging and Wellness, and Reimagined Accountability, ODE prioritizes evidence-based practices to boost early literacy, attendance, and student engagement. We are committed to closing opportunity and achievement gaps for marginalized students and securing long-term success for all of Oregon's learners by investing in culturally responsive practices, fostering inclusive environments and always driving for continuous improvement.

Safe & Welcoming Environment

Parents, students, and the community will feel welcomed and supported as partners in our student's education. Working in collaboration with our PTO, community organizations, and parents, student learning is enriched with family nights, Title I family events and opportunities to showcase student work. We continue to strive for a positive school culture inclusive of all learners and stakeholders.



OREGON AT-A-GLANCE SCHOOL PROFILE CONTINUED

Patrick Elementary School

2023-24

Outcomes

Our Staff (rounded FTE)



13

Teachers



15

Educational assistants



0

Counselors/
Psychologists/
Social Workers



79%

Average teacher retention rate over the past three years



85%

% of licensed teachers with more than 3 years of experience



Yes

Same principal in the last 3 years

REGULAR ATTENDERS

American Indian/Alaska Native	<10 students or data unavailable
Asian	<10 students or data unavailable
Black/African American	<10 students or data unavailable
Hispanic/Latino	72%
Multiracial	<10 students or data unavailable
Native Hawaiian/Pacific Islander	<10 students or data unavailable
White	68%
Students Experiencing Poverty	66%
Ever English Learner	<10 students or data unavailable
Students with Disabilities	64%
Migrant	<10 students or data unavailable
Homeless	71%
Students in Foster Care	<10 students or data unavailable
Military Connected	<10 students or data unavailable
Talented and Gifted	<10 students or data unavailable
Female	73%
Male	66%
Non-Binary	<10 students or data unavailable

ENGLISH LANGUAGE ARTS

<10 students or data unavailable
<10 students or data unavailable
<10 students or data unavailable
39%
<10 students or data unavailable
<10 students or data unavailable
32%
30%
<10 students or data unavailable
7%
<10 students or data unavailable
28%
<10 students or data unavailable
<10 students or data unavailable
<10 students or data unavailable
36%
28%
<10 students or data unavailable

MATHEMATICS

<10 students or data unavailable
<10 students or data unavailable
<10 students or data unavailable
39%
<10 students or data unavailable
<10 students or data unavailable
21%
19%
<10 students or data unavailable
7%
<10 students or data unavailable
17%
<10 students or data unavailable
<10 students or data unavailable
<10 students or data unavailable
23%
25%
<10 students or data unavailable

About Our School

BULLYING, HARASSMENT, AND SAFETY POLICIES

It is everyone's responsibility to take steps to stop bullying and/or harassment behavior. Patrick staff does not tolerate conduct that undermines a person's right to feel safe, respected, and to learn. Bullying and harassment concerns are addressed with the two main goals in mind: to maintain safety and order, and to teach the skill(s) needed to prevent the unwanted behavior from reoccurring. School safety is a priority for our school campus. Staff training in crisis situations through the ALICE program and collaboration with our school resource officer continues to guide our preparation to protect students.

EXTRACURRICULAR ACTIVITIES

- After School Program
- Jr. Comet Sports
- Music Performances
- Family Game & Science Nights provided by PTO & Title I
- Enrichment "Mixer" Classes
- Student Council
- Science Fair
- Farm to School

PARENT ENGAGEMENT

Parent engagement is encouraged and supported at Patrick Elementary. Our goal to collaborate with parents to increase active participation, involvement and engagement throughout our school. Through curriculum nights, family nights, and digital communication on school information parents are provided with resources to support engagement.

COMMUNITY ENGAGEMENT

We partner with local business and resources to provide students with learning opportunities in connection with our community:

- Local field trips to Lithia Park, Table Rock, Crater Lake and local farms.
- Artist-in-Residence
- Police and Fire Department
- Gold Hill Community Organization

• Central Point Rotary
We connect our students and community by working together to support families in need with Coats for Kids, food baskets, school supplies, shoes for students, and a community "take a book, leave a book" drop box.