



**2025-26 SCHOOL YEAR**

# Middle School Course Guide

Updated January 2025



COTTAGE GROVE | NEWPORT | ST. PAUL PARK | WOODBURY | AFTON | DENMARK | GREY CLOUD ISLAND

Dear Middle School Students and Families,

The mission of South Washington County Schools is to educate students for success. As a result, each one of our comprehensive middle schools is proud to offer a wide range of courses in a house-style environment to ease students through the transition from elementary school to middle school.

Each house consists of students and the same teachers for the core courses of math, language arts, science and social studies. Houses make a large school seem small, and help students know their teachers and each other better. Our SoWashCo Schools Middle School Course Guide serves as a guide to help families navigate our rigorous, relevant and results-oriented classes.

We want each student in our district to feel connected to their school community and have a successful middle school experience. Program planning is a team effort that involves parents/guardians, students, and staff. The academic program of core, elective and support classes are designed to prepare every student for high school and beyond.

Students and families, please take time to review this document and consider the information and your student's needs carefully. Making good academic decisions during middle school will help students be successful in the future. Remember to look ahead at possible secondary courses, as well as future college and career readiness plans in grades 6-12.

Welcome to the 2025-26 school year! We look forward to the upcoming school year and continuing to support the passion that will prepare your student for whatever their future holds.

Sincerely,

**Justin Ellevoid**  
**[Cottage Grove Middle](#)**  
9775 Indian Boulevard  
Cottage Grove, MN  
**(651) 425-6800**

**Molly Roeske**  
**[Lake Middle School](#)**  
3133 Pioneer Dr.  
Woodbury, MN 55125  
**(651) 425-6400**

**Joni Hagebock**  
**[Oltman Middle School](#)**  
66225 Goodview Ave. S.  
Cottage Grove, MN 55016  
**(651) 425-3500**

**Karin Lopez**  
**[Woodbury Middle School](#)**  
425 School Dr.  
Woodbury, MN 55125  
**(651) 425-4500**



### **MISSION**

The mission of SoWashCo Schools is to educate students for success.

### **VISION**

SoWashCo Schools will lead by example working together with students, staff, families and community to support each student.

### **CORE VALUES**

Connections • Integrity

Equity • Excellence • Innovation

## **TRANSLATIONS**

### **English**

If you need a translated version of this document or more information, please contact your child's school.

### **Spanish**

Si necesita una versión traducida de este documento o más información, póngase en contacto con el colegio de su hijo.

### **Chinese**

如果你需要本文件的翻译版本或更多信息, 请联系你孩子的学校。

### **Hmong**

Yog hais tias koj xav tau ib hom lus txhais lus ntawm daim ntawv no los sis ntau yam ntxiv, thov hu rau koj tus menyuam lub tsev kawm ntawv.

### **Vietnamese**

Nếu bạn cần một phiên bản dịch của tài liệu này hoặc thêm thông tin, vui lòng liên hệ với trường học của con bạn.

### **Somali**

Haddii aad u baahan tahay nuqul tarjuman oo dukumeenti ah ama macluumaad dheeraad ah, fadlan la xiriir dugsigii ilmahaaga.

## MIDDLE SCHOOL GRADING FOR LEARNING

South Washington County Schools has been making the transition to Standards-Based Instruction (SBI) over the past few years. Through the SBI process, each content area went through a process of prioritizing standards into clearly defined expectations for what students are expected to know and be able to do in each course. Grading for learning and standards-based grading provide better detail for families that reflect a more accurate, authentic, and meaningful grade. We believe grading for learning will assist our teachers in communicating student achievement more authentically and accurately on our course standards.

As we continue to transition to standards-based reporting, we will continue to report grades using a “traditional” grading scale. Middle school administration and teachers are committed to ensuring that grades are an accurate reflection of what students know and can do in relation to grade-level academic standards.

The grading scale is organized around four core beliefs:

- Grades must be accurate
- Grades must be fair
- Grades must be specific; and
- Grades must be timely

### Grading

Academic grades will consist of two categories:

**Formative Assessment**– Formative assessment is a venue for teachers to give feedback to students in regard to their learning and is weighted at 20% of the total academic grade. Examples include homework, class work, assignments, study guides, class activities, quizzes, etc.

**Summative Assessment**– Summative assessment is known as tests, quizzes, labs, projects, etc. Assessments are weighted at 80% of the total academic grade.

### Components of a Grade

Middle school grades are composed of assessments for and of learning.

**Assessments for learning** are given during the process of instruction to help students and teachers understand students’ current learning relative to the content standards. Some examples include homework, rough drafts, and practice.

**Assessment of learning** is defined as “Measures of student learning status at the end of a specific period of instruction.” Examples include tests, projects, performances, and written papers.

## MIDDLE SCHOOL PROGRAMMING

This course guide provides information to help students understand their middle school journey. Below is information on programs, services, and coursework available to guide them toward career and college readiness and provide a path to igniting a passion for lifelong learning.

### Program Information

<a href="#">XELLO</a>	<p>Xello is a web-based resource that supports career and college planning and is incorporated into college and career readiness classes. Xello will allow your child to:</p> <ul style="list-style-type: none"> <li>• Get involved in the planning and advising process – Build a resume, complete online surveys, and manage timelines and deadlines for making decisions about colleges and careers.</li> <li>• Research colleges – Compare GPA, standardized test scores and other statistics to actual historical data from our school for students who have applied and been admitted in the past.</li> <li>• Research careers – Research hundreds of careers and career clusters and take career assessments like the “Do What You Are” activity.</li> <li>• Create plans for the future – Build course plans, create goals and to-dos, and complete tasks assigned to you by the school to better prepare yourself for your future college and career goals.</li> </ul>
<a href="#">AVID</a>	<p>AVID’s mission is to close the achievement gap by preparing all students for college readiness and success in a global society. AVID equips students with what they need to succeed on a path to college and career success. AVID strategies are embedded in classes and students selected for the AVID program have the opportunity to take the AVID elective course.</p>

### Program Information Continued

<a href="#">Talent Development and Advanced Academics</a>	<p>Identified students are clustered in core content classes of language arts, social studies, science, and math, with teachers who have been identified and receive ongoing professional development to meet the needs of a young adolescent. The rest of the cluster classroom is composed of students of varying abilities. Each middle school has a gifted education coach to support teachers of gifted learners, students, and families.</p>
<a href="#">English Language Learners – EL</a>	<p>The English Learner (EL) program in South Washington County Schools follows governmental and professional guidelines to support students who are English learners (ELs). The program provides the assistance students need for success in school. Licensed EL teachers and support staff, in collaboration with classroom and content area teachers, promote grade-appropriate learning in all academic coursework while developing students’ English language proficiency. EL students are monitored and assessed to observe their progress in English language speaking, listening, reading, and writing. This information, along with consultation from a student’s teachers and families, helps determine the necessity and level of EL support.</p>

<a href="#">Schoology</a>	<p><i>Schoology is the online Learning Management System (LMS) used at all secondary schools in SoWashCo Schools. In Schoology, teachers post assignments, classroom resources, assessments, and a course calendar with due dates and deadlines.</i></p> <p><i>Students and families can use Schoology to review assignments and grades to monitor academic progress. To access Schoology family accounts, parents/guardians can click on Schoology under the Families drop down menu on our district website. The <a href="#">Schoology Family Guide</a> contains all the information about how to access, navigate, and manage Schoology Parent accounts.</i></p>
<a href="#">Special Education</a>	<p>Special Education is specially designed instruction and services provided to meet identified students' individual needs. Students with hearing, vision, speech, physical mobility, behavior or learning disabilities may qualify for special education services. To receive services, students must be evaluated to determine their eligibility and need based on the criteria for having a disability as defined by the Minnesota Department of Education. Students who qualify for services will have an Individual Education Plan (IEP) developed that specifies their individual goals and accommodations/modifications to the regular curriculum necessary to meet their individual needs. Courses offered to students who qualify for special education are determined by their case manager and school counselor.</p>

## REGISTRATION

In middle school, students receive registration course cards to select their elective classes for each year. Counselors visit 5th-grade classes in the elementary schools to introduce them to the 6th-grade registration process. Current 6th and 7th grade students receive registration cards in their classrooms. Visit SoWashCo Schools middle school websites for the registration timeline, Grade Level course card and for more information on registration procedures.

## MIDDLE SCHOOL PLANNING SHEET

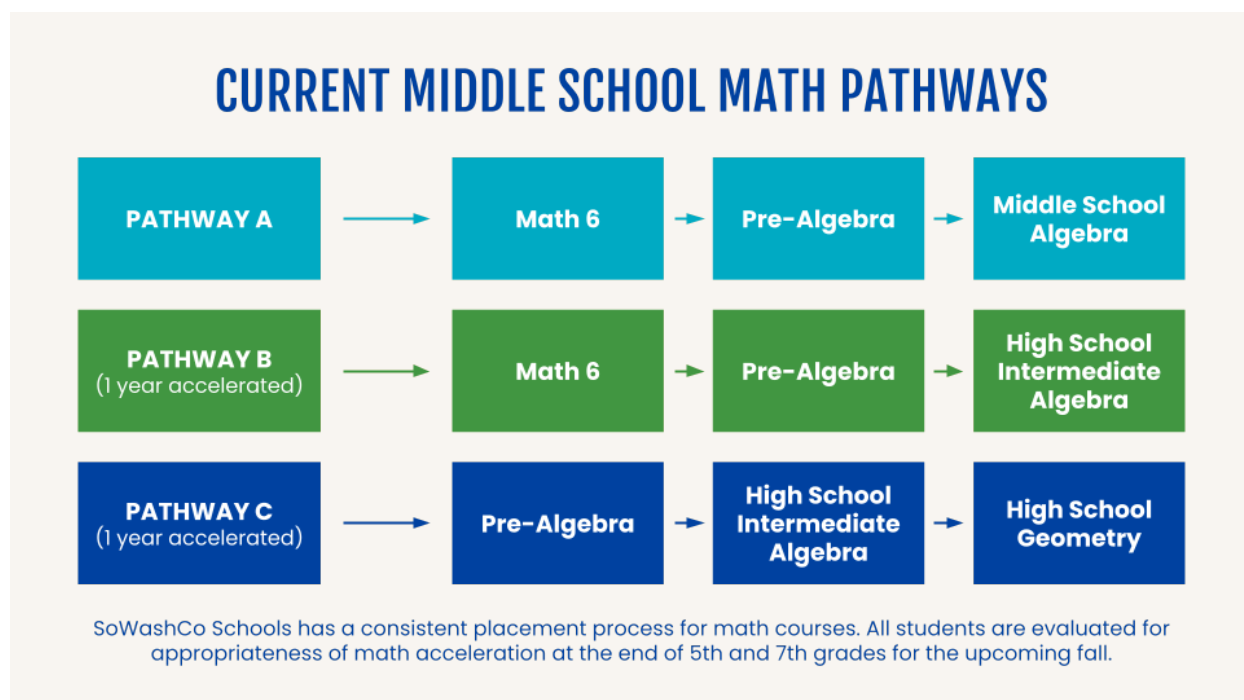
The planning sheet below shows what courses are offered in middle school.

Core Courses	6th Grade	7th Grade	8th Grade
<b>Language Arts</b>	Language Arts 6	Language Arts 7	Language Arts 8
<b>Math</b>	Math 6 Pre-Algebra Intermediate Algebra	Pre-Algebra Intermediate Algebra Geometry	MS Algebra, Intermediate Algebra Geometry Algebra II
<b>Social Studies</b>	Minnesota Studies	United States Studies	Global Studies
<b>Science</b>	Earth & Space Science	Life Science	Physical Science
<b>Encore &amp; Elective Courses</b>			
<b>Encore</b>	Art 6 Communication Arts and Reading Strategies (CARS) Coding/Computer Science	Art 7 STEM 7 Health	Art 8 STEM 8 College & Career Readiness (CCR)
<b>Electives</b>	Music (choir, orchestra, or band) Physical Education (PE)	Music (choir, orchestra, or band) Physical Education (PE)	Music (choir, orchestra, or band) Physical Education (PE) Spanish

\*Encore classes are intended to explore student interests and expand their talents. Students will be scheduled into Encore courses and can choose from Elective course options each year.

## Math Pathways

At the middle school level, students are placed in a math course according to several objective and subjective measures. Multiple pathways are provided by each school for students to receive the appropriate level of mathematics throughout grades 6–8.



## MATH COURSE DESCRIPTIONS

Students in grades 6–8 will take different math courses depending on the math pathway (above) and each course covers specific aligned 6<sup>th</sup>–8<sup>th</sup> grade Minnesota math standards. Paths in middle school are determined using several subjective and objective data points. See their descriptions below.

### MATH 6 MA0111

Math 6 develops mastery of the 6<sup>th</sup> grade Minnesota Standards in each of the four strands: Algebra, Number Sense, Geometry and Measurement, Data and Probability. The goal of 6th grade math is to build a solid foundation, enhance math skills and create success. There is an emphasis of skills in numerical operations (including basic operations and their proper order, with positive rational numbers and positive integers), measurement, patterns, simple functions, geometry, and concepts of data analysis, including statistics and probability.

### PRE-ALGEBRA MA 0112

Pre-Algebra develops mastery of the concepts in each of the four Minnesota math curriculum strands: Algebra, Number Sense, Geometry and Measurement, Data and Probability. Special focus is placed on the foundations for algebra. Students are introduced to integers and continue to develop mastery of beginning algebra concepts. There is a strong focus on proportions and ratios, evaluating algebraic graphs and solving equations graphically and numerically, and interpreting solutions in their original context.



### **MS ALGEBRA MA0080**

Middle School (MS) Algebra is designed to give students the requisite skills that provide a foundation for all future mathematics courses with an emphasis on linear relationships. Students will deepen their understanding of the real number system; justify steps in generating equivalent expressions, distinguish between linear and nonlinear functions and translate linear functions from one representation to another; solve and interpret equations and inequalities symbolically and graphically, display, interpret and draw conclusions about data using scatterplots; and express linear equations in various forms and convert between these forms. Throughout the course, mathematical concepts will be taught with an emphasis on real world application.

### **MS/HS INTERMEDIATE ALGEBRA MA008, MA009, MA0010**

This course includes an in-depth study of the algebra of lines and expands number concepts to the real number system. Specific concepts in algebra include: an understanding functions (both linear and nonlinear) in arithmetic and geometric sequences, graphing linear functions, slopes of parallel and perpendicular lines and solving systems of linear equations graphically and algebraically. Students work with the Pythagorean Theorem and its converse and solve problems by using a line of best fit to make predictions. Functions will be represented with symbols, verbal descriptions, graphs and tables. Students will model real-world situations using functions and solve problems arising from these situations. Students will also study probability and analysis. Students passing this course receive a high school credit in math.

### **MS/HS GEOMETRY MA0035, MA0036, MA0037**

This course includes the study of plane and solid geometric figures and their measurements. Students will apply properties of geometric figures and utilize the concepts of congruence, similarity, parallelism, and rules of angle measurement. It includes deeper development of concepts studied in earlier grades such as: area, surface area, volume, scale factors, Pythagorean Theorem and angle relationships and expands understanding of trigonometry, circle properties, train properties and proof. Students use tools of geometry to visualize geometric concepts. Students passing this course receive a high school credit in math.

### **ALGEBRA II MA0023, MA0024, MA0025**

This course includes a review of concepts in Algebra and provides an extension of algebra concepts. Topics include equations, linear relations, systems of equations, parabolas, quadratic equations, powers and roots, exponents and logarithms, trigonometry and polynomials, data displays, standard deviation and normal distribution, and probability. Students passing this course receive a high school credit in math.

Below are the course descriptions by grade level for all middle school students. Some courses may include credit at the high school level, and this will be reflected on student transcripts. You may also refer to each school's website for more information.

## 6th GRADE COURSES

**MATH COURSE DESCRIPTIONS** See descriptions on pages 8–9.

### **LANGUAGE ARTS 6 LA0001**

Language Arts curriculum encompasses all aspects of reading, writing, speaking and listening. Students will complete formal papers in narrative, informative (compare and contrast) and argumentative genres using the writing process. They engage in Shared Inquiry discussions, partake in differentiated literature circles, and explore the use of language for different effects in different contexts and for different purposes. Students' reading will be monitored. Students will learn how to think critically and practice critical thinking daily through reading various texts and genres of fiction, nonfiction, narrative, poetry and drama. Many interdisciplinary connections are made with other content areas.

### **SOCIAL STUDIES 6th GRADE MN STUDIES SO0001**

Students study Minnesota history and its government, citizens, economics, and geography, placing the state and its people within the context of national history. They engage in historical inquiry and study events, issues, and individuals significant to Minnesota history, beginning with the early indigenous people of the upper Mississippi River region to the present day. Interpretation of graphs, tables and maps will assist students in developing content knowledge skills.

### **SCIENCE 6th GRADE EARTH AND SPACE SCIENCE SC0003**

6th grade Earth and Space Science students will study the organization of the Earth and its systems and will engage with models to help formulate answers to questions about the Earth's place in the universe, how the materials on Earth are formed, what they influence, and how they change over time. Students will learn about Earth's resources, such as water, rocks, and minerals, and how Earth's ever-changing conditions affect living organisms. The impact of human activities on the Earth's systems and environment will be explored with an emphasis on how technology can be used to mitigate natural and human effects on weather, climate and geology.

### **COMMUNICATION ARTS AND READING STRATEGIES LA00028A, LA0028B, LA0028C (1 Trimester)**

This course provides students with an understanding of various communications used in our society, including electronic media, and how communication shapes ideas. The course will develop reading comprehension, strategies, and study skills for the acquisition of new learning in science, social studies, and other content areas. Active and critical listening are integral components of the course. Students will critically select, evaluate, and synthesize non-fiction digital and print resources.

### **CODING/COMPUTER SCIENCE BE0055A, BE0055B, BE0055C (1 Trimester)**

This course is an introduction to Computer Science, using Code.org materials, which are mapped to the Computer Science Teacher Association (CSTA) standards. The course takes a wide lens on computer science by covering topics such as problem-solving, programming, physical computing, user-centered design, and data, while inspiring students as they build their own websites, apps, games, and physical computing devices.

#### **ART 6 AR0001 (1 Trimester)**

This class focuses on the foundations of art elements, principles, aesthetics, and art history. Students will create 2-D and 3-D media including drawing, painting, sculpture, pastels, and mixed media. This studio class will provide hands-on experiences. Unit of studies includes still-life, landscape, pottery, sculpture, cartooning and animals. Students will develop production skills to express individual ideas, thoughts and feeling.

## **7th GRADE COURSES**

**MATH COURSE DESCRIPTIONS** See descriptions on pages 8-9.

#### **LANGUAGE ARTS 7 LA0002**

Language Arts curriculum encompasses all aspects of reading, writing, speaking, and listening. Students will complete formal papers in narrative, informative (e.g. compare and contrast) and argumentative genres using the writing process. They engage in Shared Inquiry discussions, partake in differentiated literature circles, learn roots and affixes in our Words Their Way vocabulary program. Students' reading will be monitored. Students will learn how to think critically and practice critical thinking daily through reading various texts and genres of fiction, nonfiction, narrative, poetry, and drama. Many interdisciplinary connections are made with other content areas.

#### **SOCIAL STUDIES 7th GRADE U.S. STUDIES SO0002**

This course provides continued development of understanding and skills in the social studies disciplines of history, geography, civics, government, and economics. Students learn about people, issues, and events of significance to this nation's history from 1800 to the current era of globalization. They examine the Declaration of Independence, the Constitution and Bill of Rights, and Supreme Court decisions for their lasting impact on the American people, economy, and governance structure.

#### **SCIENCE 7th GRADE LIFE SCIENCE SC0002**

Life science explores the concepts of structure and function in living systems, interdependence among living systems, evolution in living systems and human interactions with living systems. Thorough inquiry activities, students will learn how empirical criteria, logical argument and skeptical review are critical to understanding the natural world. Topics include nature of science, cells, heredity, evolution, simple life, human body systems, infectious disease, animals, plants, and ecology.

#### **Visual and Media Arts Course ART 7 AR0002A, AR0002B, AR0002C(1 Trimester)**

This course will combine two vital arts components – visual arts and media arts. Visual Arts, as defined by the National Art Education Association, include the traditional fine arts such as drawing, painting, printmaking, photography, and sculpture. Media arts include art forms such as film, graphic communications, animation, and emerging technologies. This course will provide students a deeper understanding of the intersection of both forms of art and provide hands-on experiences in both the visual and media arts.

### **STEM: SCIENCE, TECHNOLOGY, ENGINEERING AND MATH PLW001 (1 Trimester)**

This course integrates technology-oriented applications of mathematics and science into pre-engineering activities for students. STEM education engages students in activities, projects and problem-based learning, which provides hands-on classroom experiences through the use of technology. Students create, design, build, discover, collaborate, and solve problems while applying what they learn in math and science.

### **HEALTH PE0012 (1 Trimester)**

This course emphasizes the knowledge and skills that promote sound bodies and minds, prevent disease and dysfunction, and reduce risk. Students will focus on a variety of topics including mental and emotional health, diseases and disorders, chemical use/abuse (tobacco, alcohol, and drugs), CPR/First Aid, physical fitness, stress management and human growth, development, and sexuality.

## **8th GRADE COURSES**

**MATH COURSE DESCRIPTIONS** See descriptions on pages 8–9.

### **LANGUAGE ARTS 8 LA003**

Language Arts curriculum encompasses all aspects of reading, writing, speaking, and listening. Students will complete formal papers in narrative, informative (e.g. compare and contrast) and argumentative genres using the writing process. Students engage in Shared Inquiry discussions, partake in differentiated literature circles, learn roots and affixes in our Words Their Way vocabulary program. Students' reading will be monitored. Students will learn how to think critically and practice critical thinking daily through reading various tests and genres of fiction, nonfiction, narrative, poetry, and drama. Many interdisciplinary connections are made with other content areas.

### **SOCIAL STUDIES 8th GRADE GLOBAL STUDIES SO0003**

This course provides continued development of understanding and skills in the social studies disciplines of history, geography, civics, government, and economics. At this grade level, students focus on the world and its unique people and places. Students will take a world-regional approach to studying the planet and focus on five essential questions: how geographers interpret and show information on maps, how people interact with their environment, how history affects these regions today, how economies affect life in regions today, and how people preserve their traditional culture while adapting to modern life.

### **SCIENCE 8th GRADE PHYSICAL SCIENCE SC0003**

Eighth grade Physical Science students will explore concepts in both Chemistry and Physics. Students will begin with foundational work in Chemistry starting with the structures and properties of atoms, molecules, and substances along with basic chemical reactions and the transfer of energy. In the second half of the year, students will explore principles of Physics focusing on forces and motion, types of energy, along with examining waves, gravity, magnetism, and electricity. Students will explore real-world applications through labs, investigations, and engineering projects. Emphasis will be placed on scientific inquiry, problem-solving, narrative descriptions, communication of ideas, and argument from evidence, all building a strong foundation for high school science.

### **COLLEGE AND CAREER READINESS EL0052 (1 Trimester)**

This course explores academics, admission, career, financial, and personal and social readiness goals in preparation for high school, college, and careers. Students explore the correlation between learning styles and careers, examine how careers have transformed over time, discover college and explore post-secondary education incorporating the use of Xello, a college and career readiness resource program for middle and high school students that helps align students' strengths and interests to their postsecondary goals.

### **Media Arts Course ART 8 AR0001 (1 Trimester)**

Media Arts are everywhere nowadays. In this course, students will engage in technology-based creative production and design, including concepts of digital art and web design that can include computers, cameras, storyboarding and more. This course will go deeper from the overview they received in grade 7. This course may enhance a student's appreciation for the media they use every day, or it may even spark an interest in working with media arts as a career option.

## **MIDDLE SCHOOL ELECTIVE COURSES**

### **BAND (Grades 6–8) MU0009, MU0010, MU0011**

This course helps students develop techniques for playing brass, woodwind and percussion and their ability to perform a variety of concert band literature styles. Band is for students who play an instrument and will work to develop rehearsal, performance and music reading skills and fundamentals necessary to attain a high level of musicianship and confidence. Students will explore a variety of musical styles. There will be several opportunities for performances each year, including field trips and small ensembles.

### **CHOIR (Grades 6–8) MU0012, MU0013, MU0014**

This course helps develop students' vocal skills within the context of a large choral ensemble in which they perform a variety of styles of repertoire. Choir is an ensemble-based course in which students work together as a team to develop their vocal skills. Choir members work on proper vocal technique, rehearsal skills and learn a well-rounded background in music fundamentals. Each student develops independent singing and reading skills to attain a high level of musicianship and confidence. Students will explore a variety of styles of music, including world music, art songs, contemporary music, and pop music.

### **ORCHESTRA (Grades 6–8) MU0051, MU0052, MU0053**

This course helps develop students' technique for playing strings along with woodwind, brass, and percussion. This course emphasizes collaboration through rehearsal and performance experiences in creating and responding to music.

### **MS/HS SPANISH I (Grade 8) WL0103**

Designed to introduce students to the Spanish language and culture, courses in this classification prepare students to communicate authentically in Spanish by interpreting (reading, listening and viewing), exchanging (speaking, listening, reading and writing), and presenting (speaking and writing). Students will explore a variety of cultural themes through language and culture of the Spanish-speaking world, stressing the ability to ask for and give information and to describe situations in Spanish. This course will also help students develop skills in listening, speaking, reading, and writing in Spanish, and increasing awareness of Hispanic culture. Spanish includes World Cultures, which explores several cultures using vocabulary and language skills through a variety of interactive activities, games, songs, and technology. Students passing this course receive a high school credit in world language.

### **PHYSICAL EDUCATION (Grades 6–8) PE0005**

Physical Education (PE) courses in the middle school are based on the acquisition of knowledge and skills that provide the foundation for sport, a physically active lifestyle and social development through physical activity. Activities typically include those that increase strength, endurance, and flexibility; reinforce safe technique; teach the rules and conventions of games and sports; and explore the relationship between physical activity and health. Specific content depends upon state standards for each grade level.

### **STEM: SCIENCE, TECHNOLOGY, ENGINEERING, AND MATH (Grade 8) PLW002**

This course integrates technology-oriented applications of mathematics and science into pre-engineering activities for students. STEM education engages students in activities, projects, and problem-based learning, which provides hands-on classroom experiences through the use of technology. Students create, design, build, discover, collaborate and solve problems while applying what they learn in math and science.

PLANNING FOR HIGH SCHOOL

Middle school prepares students to enter high school with the skills and knowledge to succeed and earn a high school diploma. Below is a glance at the high school requirements in SoWashCo Schools.

Subject	Credits Needed	Subject	Credits Needed
English	12	Social Studies (Including American Government and Politics, and Economics)	10
Math**	9	Science (Physical Science, Biology, Chemistry and/or Physics)	9
Fine Arts	2	Health	1
General Physical Education	1	Electives*	22

\*Students may select from a variety of elective courses. Please consult the SoWashCo Schools website under “Academics” and “High School” to access the High School Course Guide for course descriptions and the \*\*Math Pathways in high school.



#### MISSION

The mission of SoWashCo Schools is to educate students for success.

#### VISION

SoWashCo Schools will lead by example – working together with students, staff, families and community to support each student.

#### CORE VALUES



##### CONNECTIONS

Building meaningful relationships through empathy, kindness, patience, and respect that lead to trust and understanding.



##### INTEGRITY

Demonstrating care, reliability, and honesty while keeping students at the center of decision-making.



##### EQUITY

Ensuring each individual receives what they need to reach their full potential.



##### EXCELLENCE

Setting a high standard through quality instruction and opportunities with a focus on continuous improvement and risk-taking.



##### EDUCATIONAL INNOVATION

Educating students through new ideas and methods that increase student engagement, and encourage creativity, critical thinking, and collaboration.

#### STRATEGIC DIRECTIONS

##### THE STUDENT EXPERIENCE

We will develop and implement systems that promote positive student interactions, amplify student voice, accept students for who they are, and welcome each of them as part of our community.

##### MASTERY OF LEARNING AND EXPECTATIONS

We will ensure student success by setting clear expectations, personalizing learning experiences, and encouraging students to own their education.

##### STUDENT PATHWAYS AND SUPPORTS

We will provide meaningful and relevant learning opportunities, and establish a system of academic and social-emotional support based on the needs of each student.

##### OPERATIONS STAFFING AND FINANCE

We will invest in our employees, and be accountable for effective and efficient management of resources.

##### ENGAGEMENT AND PARTNERSHIPS

We will work together to promote engagement and the sharing of resources to build stronger family and community connections.

#### SUPERINTENDENT

**Ms. Julie Nielsen**  
Superintendent

**Dr. Tyrone Brookins**  
Assistant Superintendent

**Ms. Kelly Jansen**  
Assistant Superintendent

**Ms. Kristine Schaefer**  
Assistant Superintendent

#### SCHOOL BOARD

Ms. Melinda Dols

Ms. Patrica Driscoll

Mr. Ryan Clarke

Ms. Simi Patnaik

Ms. Katie Schwartz

Mr. Eric Tessmer

Ms. Sharon Van Leer