

CONNECTION CARDS

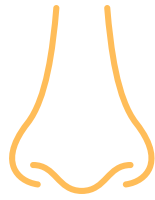
Ask questions,
create community.

For classmates, colleagues,
families or friends
of all ages.

www.commed.spps.org

**COMMUNITY
EDUCATION**
Saint Paul Public Schools

Describe a scent
you really like.



**COMMUNITY
EDUCATION**
Saint Paul Public Schools
CONNECTION CARDS

Share a compliment
that you received
recently. How did it
make you feel?



**COMMUNITY
EDUCATION**
Saint Paul Public Schools
CONNECTION CARDS

How would you
describe yourself in
3-5 words?



**COMMUNITY
EDUCATION**
Saint Paul Public Schools
CONNECTION CARDS

What is one of
your special
skills?



**COMMUNITY
EDUCATION**
Saint Paul Public Schools
CONNECTION CARDS

What is a skill
you hope to
learn someday?



**COMMUNITY
EDUCATION**
Saint Paul Public Schools
CONNECTION CARDS

If you had to change
your first name, what
would your new name
be?

HELLO
my name is

**COMMUNITY
EDUCATION**
Saint Paul Public Schools
CONNECTION CARDS

If you had a theme song
that played every time
you entered a party,
what would it be?



**COMMUNITY
EDUCATION**
Saint Paul Public Schools
CONNECTION CARDS

What was the last
thing that made you
laugh really hard?



**COMMUNITY
EDUCATION**
Saint Paul Public Schools
CONNECTION CARDS

What is something
you are looking
forward to?



**COMMUNITY
EDUCATION**
Saint Paul Public Schools
CONNECTION CARDS

Describe the feeling of
being content. What is
something that makes
you feel this way?



**COMMUNITY
EDUCATION**
Saint Paul Public Schools
CONNECTION CARDS

Describe a time you
gave a really thoughtful
gift. How did you know
they would like it?



**COMMUNITY
EDUCATION**
Saint Paul Public Schools
CONNECTION CARDS

Who is someone
you admire and
why?



**COMMUNITY
EDUCATION**
Saint Paul Public Schools
CONNECTION CARDS

Name someone you
think will be
famous some day.
Why?



**COMMUNITY
EDUCATION**
Saint Paul Public Schools
CONNECTION CARDS

What's something
that really grosses
you out?



**COMMUNITY
EDUCATION**
Saint Paul Public Schools
CONNECTION CARDS

What is your favorite
card or board game?



**COMMUNITY
EDUCATION**
Saint Paul Public Schools
CONNECTION CARDS

What subject do you
wish was taught in
every school?



**COMMUNITY
EDUCATION**
Saint Paul Public Schools
CONNECTION CARDS

What is your
favorite emoji?
Why?



**COMMUNITY
EDUCATION**
Saint Paul Public Schools
CONNECTION CARDS

If you could
automatically be fluent
in any language, which
would you choose?



**COMMUNITY
EDUCATION**
Saint Paul Public Schools
CONNECTION CARDS

Whose laugh do
you love to hear?
Why?



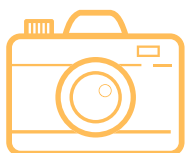
**COMMUNITY
EDUCATION**
Saint Paul Public Schools
CONNECTION CARDS

What is your
favorite thing to do
on a sunny day?



**COMMUNITY
EDUCATION**
Saint Paul Public Schools
CONNECTION CARDS

What do you like
to take photos of?



**COMMUNITY
EDUCATION**
Saint Paul Public Schools
CONNECTION CARDS

What is something
you are proud of
yourself for?



**COMMUNITY
EDUCATION**
Saint Paul Public Schools
CONNECTION CARDS

If you could automatically
be a genius with any
instrument, which would
you choose?



**COMMUNITY
EDUCATION**
Saint Paul Public Schools
CONNECTION CARDS

What is your favorite thing to do on a rainy day?



**COMMUNITY
EDUCATION**
Saint Paul Public Schools
CONNECTION CARDS

If you were writing a story about your family, what might the title be?



**COMMUNITY
EDUCATION**
Saint Paul Public Schools
CONNECTION CARDS

Describe what your mind sees when you dream...

(note: some people dream in words, some in static pictures, some in rolling images, some don't see anything in particular but instead feel their dreams)



**COMMUNITY
EDUCATION**
Saint Paul Public Schools
CONNECTION CARDS

If you could make your own art car, what would it look like?



**COMMUNITY
EDUCATION**
Saint Paul Public Schools
CONNECTION CARDS

If you could be a Broadway or movie actor, musician or director - which would you choose? Why?



**COMMUNITY
EDUCATION**
Saint Paul Public Schools
CONNECTION CARDS

Describe one of the most amazing things you have ever seen.



**COMMUNITY
EDUCATION**
Saint Paul Public Schools
CONNECTION CARDS

What is one of your super powers?



**COMMUNITY
EDUCATION**
Saint Paul Public Schools
CONNECTION CARDS

Who would you love to build a tree fort with? Why?



**COMMUNITY
EDUCATION**
Saint Paul Public Schools
CONNECTION CARDS

If you could be an Olympian in any sport, which sport would you choose?



**COMMUNITY
EDUCATION**
Saint Paul Public Schools
CONNECTION CARDS

If you could make one change to make the world a better place, what would you change?



**COMMUNITY
EDUCATION**
Saint Paul Public Schools
CONNECTION CARDS

Tell a story about something you watched someone else do that made you feel proud of them.



**COMMUNITY
EDUCATION**
Saint Paul Public Schools
CONNECTION CARDS

If you could join a fictional world from any book or movie, what would it be?



**COMMUNITY
EDUCATION**
Saint Paul Public Schools
CONNECTION CARDS

If you were going to eat the same thing for dinner every Wednesday, what would you want that meal to be?



**COMMUNITY
EDUCATION**
Saint Paul Public Schools
CONNECTION CARDS

Tell a story about something someone else did that made you feel loved.



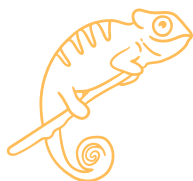
**COMMUNITY
EDUCATION**
Saint Paul Public Schools
CONNECTION CARDS

If it was your job to create a new community celebration, what would the theme be?



**COMMUNITY
EDUCATION**
Saint Paul Public Schools
CONNECTION CARDS

If you could temporarily morph into a certain animal whenever you wanted, what animal would you choose?



**COMMUNITY
EDUCATION**
Saint Paul Public Schools
CONNECTION CARDS

What are 3 things you are grateful for today?



**COMMUNITY
EDUCATION**
Saint Paul Public Schools
CONNECTION CARDS

Describe your earliest memory.



**COMMUNITY
EDUCATION**
Saint Paul Public Schools
CONNECTION CARDS

Describe what you remember about your first friend.



**COMMUNITY
EDUCATION**
Saint Paul Public Schools
CONNECTION CARDS

If you could take a trip to anywhere in the world, where would you want to go? Why?



**COMMUNITY
EDUCATION**
Saint Paul Public Schools
CONNECTION CARDS

If you could meet anyone in history, who would you want to meet? What would you ask them?



**COMMUNITY
EDUCATION**
Saint Paul Public Schools
CONNECTION CARDS

What is something about how your community (family, school, friend group, etc) works that you might want to change? How would you want it to be different?



**COMMUNITY
EDUCATION**
Saint Paul Public Schools
CONNECTION CARDS

How did you grow your mind this week?



**COMMUNITY
EDUCATION**
Saint Paul Public Schools
CONNECTION CARDS

What are some things that are important to you about being a friend?



**COMMUNITY
EDUCATION**
Saint Paul Public Schools
CONNECTION CARDS

How could you help
a friend that was
being teased?



**COMMUNITY
EDUCATION**
Saint Paul Public Schools
CONNECTION CARDS

What do you like
to do that makes
you feel relaxed?



**COMMUNITY
EDUCATION**
Saint Paul Public Schools
CONNECTION CARDS

What is a word you love
to say? What is a word
you like to hear others
say?



**COMMUNITY
EDUCATION**
Saint Paul Public Schools
CONNECTION CARDS

What is something
you did today to take
care of your body?



**COMMUNITY
EDUCATION**
Saint Paul Public Schools
CONNECTION CARDS

What sea animal
would you most like
to swim with?



**COMMUNITY
EDUCATION**
Saint Paul Public Schools
CONNECTION CARDS

What is something
that helps you when
you are feeling
worried?



**COMMUNITY
EDUCATION**
Saint Paul Public Schools
CONNECTION CARDS

What is your favorite
drink on a hot day?
Or a cold day?



**COMMUNITY
EDUCATION**
Saint Paul Public Schools
CONNECTION CARDS

What's a sound
that you love to
hear?



**COMMUNITY
EDUCATION**
Saint Paul Public Schools
CONNECTION CARDS

What was something
kind you did or saw
this week?



**COMMUNITY
EDUCATION**
Saint Paul Public Schools
CONNECTION CARDS

Describe your day in 3
emojis. Why did you
choose them?



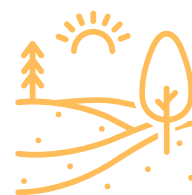
**COMMUNITY
EDUCATION**
Saint Paul Public Schools
CONNECTION CARDS

Describe an item that
you feel an emotional
attachment to. Why?



**COMMUNITY
EDUCATION**
Saint Paul Public Schools
CONNECTION CARDS

What is something
beautiful you have
seen outdoors?



**COMMUNITY
EDUCATION**
Saint Paul Public Schools
CONNECTION CARDS

Would you rather
have super hearing
or super smell?



**COMMUNITY
EDUCATION**
Saint Paul Public Schools
CONNECTION CARDS

What is something that
makes you feel afraid?
What helps when you
feel the fear?



**COMMUNITY
EDUCATION**
Saint Paul Public Schools
CONNECTION CARDS

Describe a party
you'd throw if you
had an unlimited
budget.



**COMMUNITY
EDUCATION**
Saint Paul Public Schools
CONNECTION CARDS

Describe a way you
feel emotions in your
body.



**COMMUNITY
EDUCATION**
Saint Paul Public Schools
CONNECTION CARDS

Who is one of your allies
at school or work or your
community? How do you
know they are?



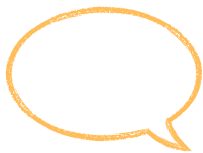
**COMMUNITY
EDUCATION**
Saint Paul Public Schools
CONNECTION CARDS

Describe a time you had
to ask for help. How did
it feel? What was the
result?



**COMMUNITY
EDUCATION**
Saint Paul Public Schools
CONNECTION CARDS

If you could talk to
your past self, what
would you want them
to know?



**COMMUNITY
EDUCATION**
Saint Paul Public Schools
CONNECTION CARDS

What other culture
would you like to
learn more about?
Why?



**COMMUNITY
EDUCATION**
Saint Paul Public Schools
CONNECTION CARDS

What is one privilege
you have that others in
the world or your local
community may not?



**COMMUNITY
EDUCATION**
Saint Paul Public Schools
CONNECTION CARDS

If you got to talk to the
president for 5
minutes, what would
you tell them?



**COMMUNITY
EDUCATION**
Saint Paul Public Schools
CONNECTION CARDS

If you got to swim in a
pool of any substance,
what would you
choose?



**COMMUNITY
EDUCATION**
Saint Paul Public Schools
CONNECTION CARDS

Would you rather
be able to breathe
underwater or have
your own airplane?



**COMMUNITY
EDUCATION**
Saint Paul Public Schools
CONNECTION CARDS

If you had a switch to turn one emotion on and off, which would you choose to control? Why?



**COMMUNITY
EDUCATION**
Saint Paul Public Schools
CONNECTION CARDS

What is something you love about your body? Why?



**COMMUNITY
EDUCATION**
Saint Paul Public Schools
CONNECTION CARDS

What is a food that tastes like a celebration to you?



**COMMUNITY
EDUCATION**
Saint Paul Public Schools
CONNECTION CARDS

What is one household chore that you don't mind doing? What's one you wish you never had to do again?



**COMMUNITY
EDUCATION**
Saint Paul Public Schools
CONNECTION CARDS

What is your favorite time of day? Why?



**COMMUNITY
EDUCATION**
Saint Paul Public Schools
CONNECTION CARDS

If you live to be 100 years old, what would you like to have accomplished?



**COMMUNITY
EDUCATION**
Saint Paul Public Schools
CONNECTION CARDS

What is a special food that you'd like to learn how to make?



**COMMUNITY
EDUCATION**
Saint Paul Public Schools
CONNECTION CARDS

What is a family activity that you really enjoy?



**COMMUNITY
EDUCATION**
Saint Paul Public Schools
CONNECTION CARDS

Would you want to be famous? If so, for what?



**COMMUNITY
EDUCATION**
Saint Paul Public Schools
CONNECTION CARDS

If you had a pet dinosaur, what would you name it?



**COMMUNITY
EDUCATION**
Saint Paul Public Schools
CONNECTION CARDS

What is one great thing about being your age right now?



**COMMUNITY
EDUCATION**
Saint Paul Public Schools
CONNECTION CARDS

Who is someone in your life that you love to learn from?



**COMMUNITY
EDUCATION**
Saint Paul Public Schools
CONNECTION CARDS

What is or was
your favorite
childhood toy?



**COMMUNITY
EDUCATION**
Saint Paul Public Schools
CONNECTION CARDS

What is one way
you enjoy being
physically active?



**COMMUNITY
EDUCATION**
Saint Paul Public Schools
CONNECTION CARDS

What is your
favorite place in
your home?



**COMMUNITY
EDUCATION**
Saint Paul Public Schools
CONNECTION CARDS

Describe the feeling
of happiness. What
makes you feel this
way?



**COMMUNITY
EDUCATION**
Saint Paul Public Schools
CONNECTION CARDS

If you could have a
mythical animal as a
friend, what would it
be?



**COMMUNITY
EDUCATION**
Saint Paul Public Schools
CONNECTION CARDS

If you could time travel
once, would you go
back in time or to the
future?



**COMMUNITY
EDUCATION**
Saint Paul Public Schools
CONNECTION CARDS

If you could invent a new
holiday, what would it be
called and how would
people celebrate it?



**COMMUNITY
EDUCATION**
Saint Paul Public Schools
CONNECTION CARDS

What's your favorite
outdoor activity and
why do you enjoy it?



**COMMUNITY
EDUCATION**
Saint Paul Public Schools
CONNECTION CARDS

What is one food
that you really
dislike?



**COMMUNITY
EDUCATION**
Saint Paul Public Schools
CONNECTION CARDS

If you were in charge
of a whole day with
friends or family, what
would you plan?



**COMMUNITY
EDUCATION**
Saint Paul Public Schools
CONNECTION CARDS

What is something
that helps you feel
better when you are
upset?



**COMMUNITY
EDUCATION**
Saint Paul Public Schools
CONNECTION CARDS



**COMMUNITY
EDUCATION**
Saint Paul Public Schools

Did you have fun
connecting with these
cards? Check out our
other offerings!
www.commed.spps.org