

# D4- Dunston Rezoning Options for 2025-2026

Planning & Real Estate Department  
October 2024

# Objective/Goals

Reduce overcrowding at Dunston Elementary and address under utilization at neighboring elementary schools.

Factors may include:

- Historical and Projected Enrollment

- School Capacity

- Student Demographics

- Social Impact

- Planned Developments

- Traffic Impact

- Natural Boundaries or Physical Barriers

- School Feeder Pattern

- Grade Configurations

# Zoning/Rezoning Process

- Constituent Board initiates need to zone or rezone
- Constituent Board receives enrollment and growth data from CCSD staff and determines goals and priorities of zone/rezone
- Zoning options and supporting data are presented to the Constituent Board by CCSD staff for input
- Timeline created to conduct community engagement sessions and ensure a smooth transition for families
  - Constituent Board hosts meetings to present options to the community for feedback
- Constituent Board determines the best option and votes to move forward
- New zones can be implemented the following school year if completed by November (allowing time for families to prepare and potentially utilize school choice/transfer processes)

# Southern D4 Elementary School's Capacity and Future Projections

FUTURE PROJECTIONS ARE SUBJECT TO CHANGE YEARLY

	Bldg Capacity	FY2020	FY2021	FY2022	FY2023	FY2024	FY2025	FY2026	FY2027	FY2028	FY2029	FY2030
<b>Matilda Dunston ES</b>	550	365	390	380	415	473	555	499	491	481	480	470
<b>N.C. Creative Arts ES</b>	616	561	486	467	409	401	394	389	394	393	401	395
<b>North Charleston ES</b>	702	428	336	304	271	293	333	290	287	284	270	273

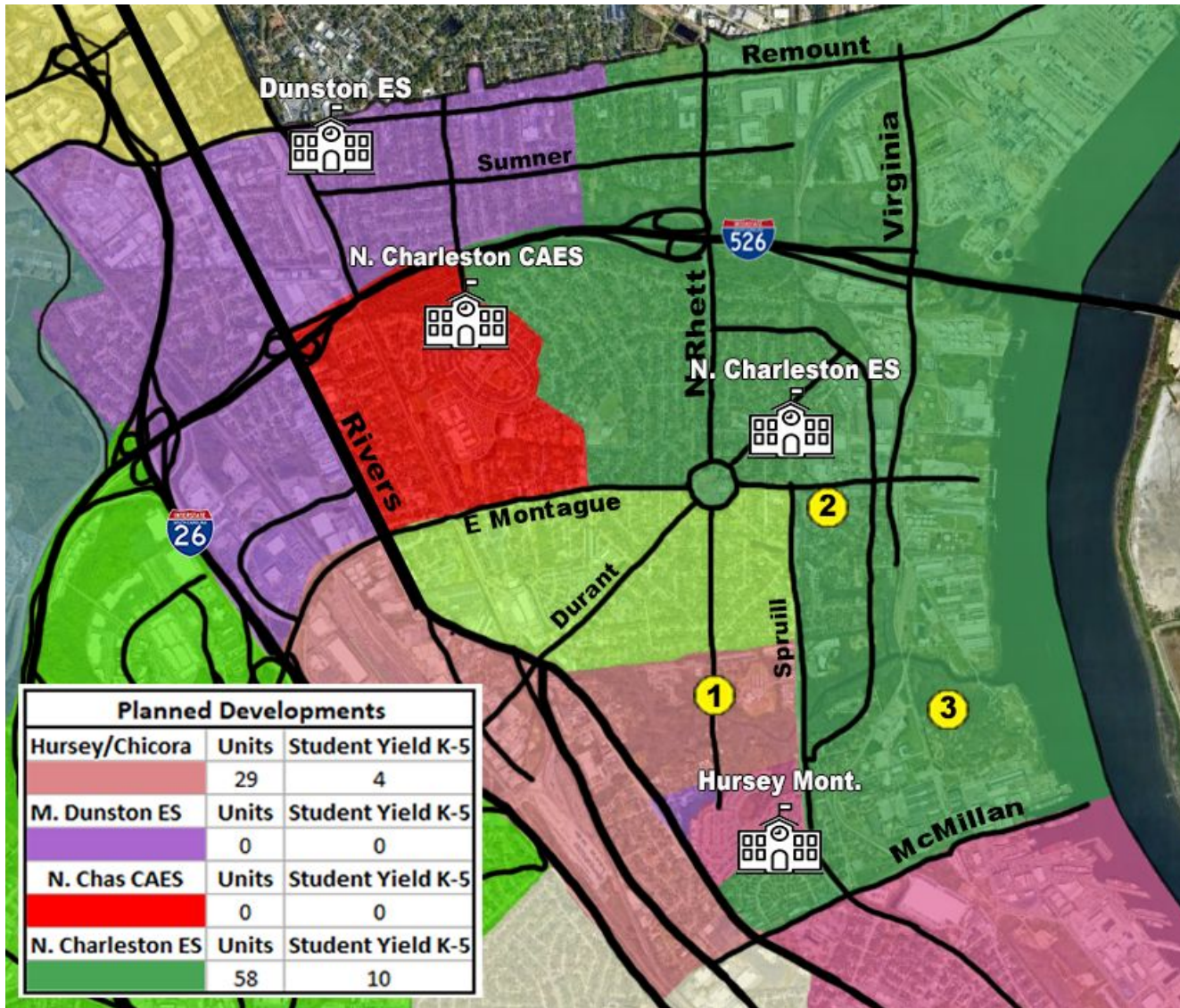
\*Building Capacity does not include trailers

	Bldg Capacity	FY25	Delta
<b>Matilda Dunston ES</b>	550	555	-5
<b>N.C. Creative Arts ES</b>	616	394	222
<b>North Charleston ES</b>	702	333	369

## Dunston's FY24/25 Enrollment Snapshot

FY24 Dunston Enrollment				FY25	
10-Day	45-Day	90-Day	135-Day	10-Day	45-Day
473	495	525	527	555	574

# Planned Developments

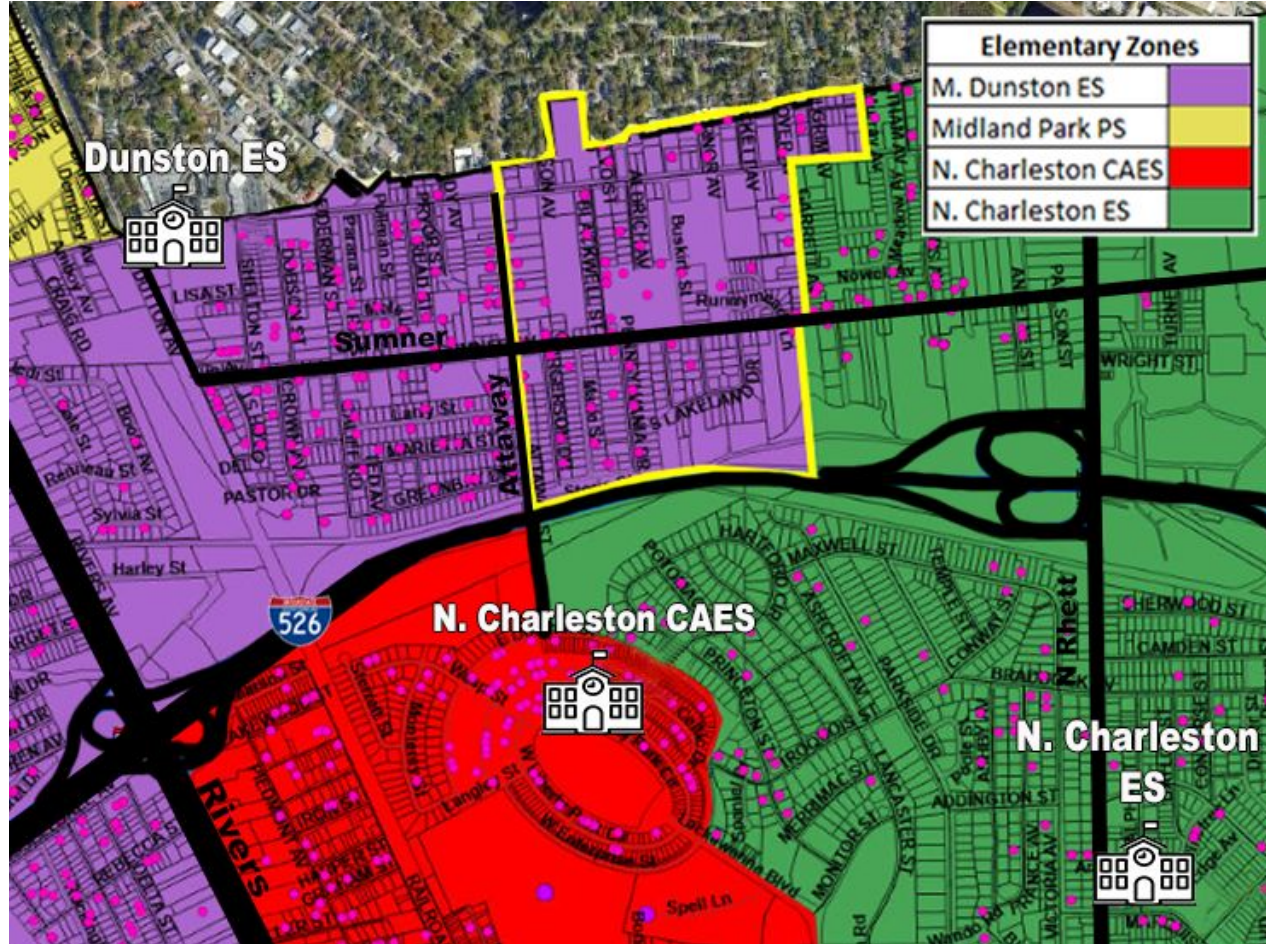


# Option 1: Rezone all homes east of Attaway St to NCES (116 students)

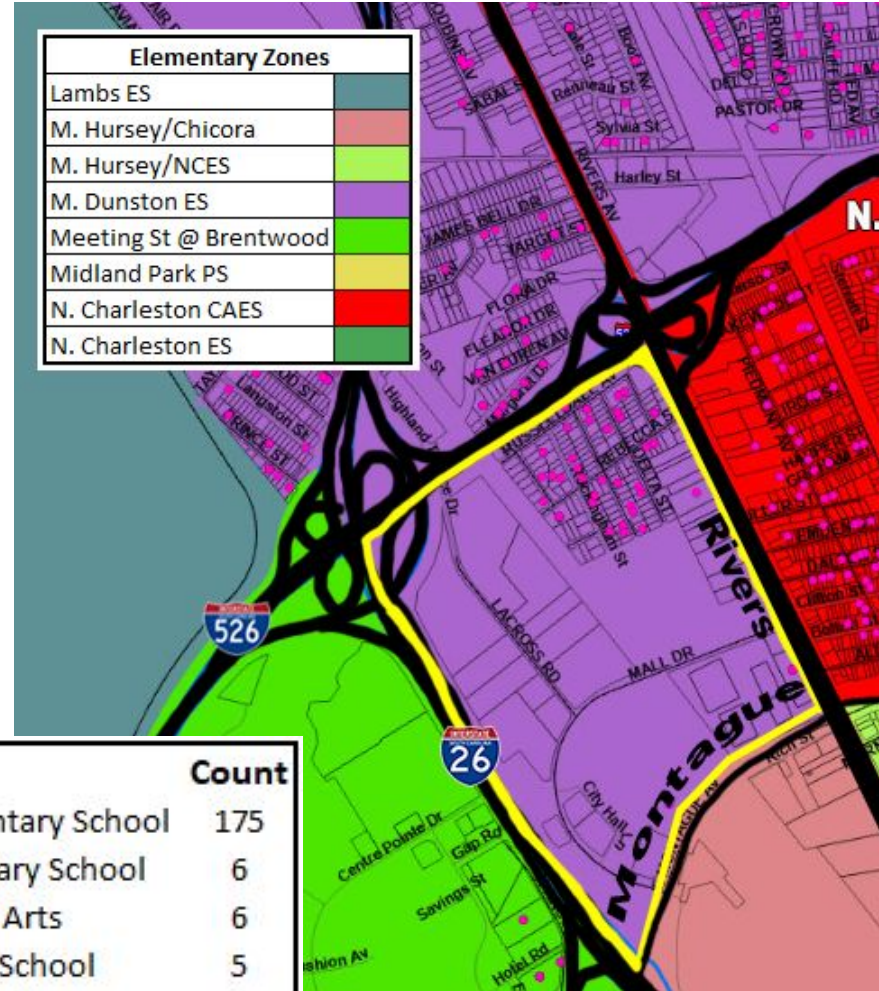
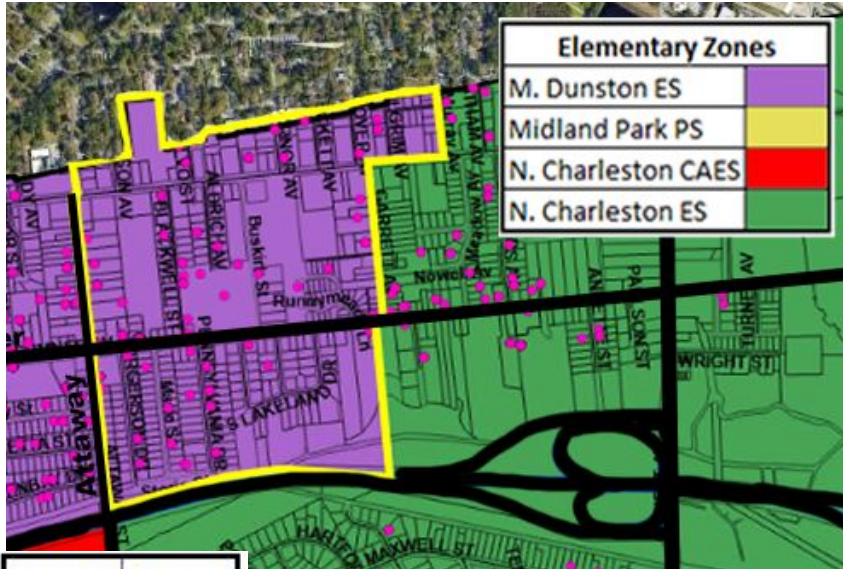
Top Attended Schools	Count
Matilda F. Dunston Elementary School	116
James Simons Montessori School	5
North Charleston Creative Arts	5
Midland Park Primary School	4
North Charleston Elementary School	4
Sanders-Clyde Elementary School	2

Grade	Count
-1	11
0	16
1	16
2	29
3	19
4	10
5	15
<b>Total</b>	<b>116</b>

Ethnicity	Count
A	2
B	38
H	65
W	11
<b>Total</b>	<b>116</b>



# Option 2: Option 1 plus all homes west of Rivers and south of 526 (175 Students) 116 to NCES and 59 to NCCAES



Grade Count	
-1	15
0	24
1	28
2	40
3	26
4	21
5	21
<b>Total</b>	<b>175</b>

Ethnicity Count	
A	2
B	55
H	100
M	5
W	13
<b>Total</b>	<b>175</b>

Top Attended Schools		Count
Matilda F. Dunston Elementary School		175
North Charleston Elementary School		6
North Charleston Creative Arts		6
James Simons Montessori School		5
Midland Park Primary School		4

# Way Ahead

- **November 2024:** D4 Board Meeting: Review community input and get rezoning option approved
- **December 2024:** Notify affected families
- **August 2025:** Implement zoning change

**Questions?**

**Preguntas?**

## Demographics Once Options Implemented (Based on FY24 Data)

		Current %	Opt 1	Opt 2
<b>M. Dunston</b>	A	0%	0%	0%
	B	35%	35%	36%
	H	56%	56%	55%
	M	3%	4%	3%
	W	6%	5%	6%
<b>N. Charleston ES</b>	A	0%	1%	1%
	B	65%	56%	56%
	H	21%	30%	30%
	I	0%	0%	0%
	M	3%	2%	2%
	W	10%	10%	10%
<b>NCCAES</b>	A	0%		0%
	B	46%		44%
	H	21%		26%
	M	7%		7%
	W	25%		22%

## Transportation (Travel Times and Busing)

Travel Time (Distance in Miles/Time)						
	MDES		NCES		NCCAES	
	Miles	Time	Miles	Time	Miles	Time
Salvo St	0.8 miles	3 min	2.2 miles	7 min		
Pilgrim Ave	1.1 miles	4 min	1.9 miles	6 min		
1300 Sumner	1.1 miles	3 min	1.6 miles	5 min		
Pennsylvania	1 mile	4 min	2 miles	7 min		
4800 Rivers	2 miles	7 min			1.6 miles	5 min
Russelldale	1.8 miles	8 min			2.3 miles	7 min
Rebecca	1.6 miles	7 min			2.1 miles	6 min

**\*No issues are anticipated with changes in travel times or busing**