

## Elementary Enrollment/Attendance Areas Committee December 16, 2024

### *Committee Purpose*

- Address Decline in District-Wide Enrollment
- Maximize Use of District Resources
- Develop Recommendations/Options to Provide to School Board for Elementary Enrollment Areas

### *Committee Goals*

- *Optimizing Capacity*- balance populations to make best use of available space
- *Equitable Access*- fair access to educational programs and facilities
- *Minimize Disruptions*- for learners and families
- *Maintain Efficiency*- travel time and middle school feeders
- *Future Needs and Considerations*- planning for future changes and needs

### *Washington Neighborhood Association Presentation*

### *Updated Information and Data*

- Special Board Meeting- Tuesday, January 7<sup>th</sup> at 3:30 p.m.
- Tendoy and Washington Comparison Chart and Information
- Updated Enrollment Area Maps and Data

### *Enrollment Areas Collaboration and Committee Work*

- Committee Discussion, Collaboration and Input- ArcGIS (Geographic Information System)

### *Discussion/Questions/Resources*

## Tendoy Elementary / Washington Elementary / Lincoln Early Intervention Cost Analysis

Tendoy Elementary School built 1959					
Systems	Years 0-5	Years 6-10	Years 11-20	Years 20+	Total
Site	\$ -	\$ -	\$ 1,319,805	\$ 463,715	\$ 1,783,520
Structural	\$ -	\$ -	\$ -	\$ 1,124,688	\$ 1,124,688
Exterior	\$ -	\$ -	\$ 391,483	\$ 796,698	\$ 1,188,181
Roofing	\$ 260,572	\$ -	\$ 260,572	\$ -	\$ 521,145
Interior	\$ 236,495	\$ 1,364,660	\$ -	\$ 94,527	\$ 1,695,682
HVAC	\$ 142,503	\$ 285,006	\$ 538,980	\$ -	\$ 966,489
Plumbing	\$ -	\$ 165,243	\$ 341,722	\$ 87,838	\$ 594,804
Electrical	\$ -	\$ -	\$ 659,367	\$ 707,522	\$ 1,366,889
Fire & Safety	\$ -	\$ 177,014	\$ 274,484	\$ -	\$ 451,498
Technology	\$ -	\$ 320,855	\$ -	\$ -	\$ 320,855
Specialties	\$ -	\$ 178,352	\$ 419,841	\$ 89,176	\$ 687,369
<b>Total</b>	<b>\$ 639,570</b>	<b>\$ 2,491,130</b>	<b>\$ 4,206,254</b>	<b>\$ 3,364,164</b>	<b>\$ 10,701,120</b>

Pros	Cons
*Central Location	*Limited parking
*ADA Accessibility	*Limited space for drop off/pick up

Washington Elementary School built 1920					
Systems	Years 0-5	Years 6-10	Years 11-20	Years 20+	Total
Site	\$ 156,610	\$ -	\$ 1,924,061	\$ 156,610	\$ 2,237,281
Structural	\$ 1,410,829	\$ -	\$ -	\$ -	\$ 1,410,829
Exterior	\$ 245,541	\$ -	\$ 1,244,934	\$ -	\$ 1,490,475
Roofing	\$ 653,733	\$ -	\$ -	\$ -	\$ 653,733
Interior	\$ 296,663	\$ 1,830,431	\$ -	\$ -	\$ 2,127,094
HVAC	\$ 357,517	\$ 178,759	\$ 676,106	\$ -	\$ 1,212,382
Plumbing	\$ -	\$ 207,284	\$ 428,663	\$ 110,186	\$ 746,133
Electrical	\$ -	\$ -	\$ 1,714,651	\$ -	\$ 1,714,651
Fire & Safety	\$ -	\$ 220,050	\$ 344,317	\$ -	\$ 564,367
Technology	\$ -	\$ 402,487	\$ -	\$ -	\$ 402,487
Specialties	\$ -	\$ 223,728	\$ 526,656	\$ 111,864	\$ 862,248
<b>Total</b>	<b>\$ 3,120,893</b>	<b>\$ 3,062,739</b>	<b>\$ 6,859,388</b>	<b>\$ 378,660</b>	<b>\$ 13,421,680</b>

Pros	Cons
*Geographic Location	*Not ADA Accessibility
	*Street Parking
	*No air-conditioning in the basement
	*Significant upgrades needed for long-term use

\* As per the Facility Observation Report from Design West Architects on August 20, 2023, their report stated "Improving the structural safety of a school the age of Washington would be cost prohibitive. The other schools being newer could more easily receive structural upgrades to increase structural safety at a lower cost."

Lincoln Early Intervention built 1959					
Systems	Years 0-5	Years 6-10	Years 11-20	Years 20+	Total
Site	\$ -	\$ -	\$ 1,938,445	\$ 681,075	\$ 2,619,520
Structural	\$ -	\$ -	\$ -	\$ 1,651,869	\$ 1,651,869
Exterior	\$ 9,131	\$ -	\$ 565,853	\$ 1,170,140	\$ 1,745,124
Roofing	\$ 647,141	\$ -	\$ 118,283	\$ -	\$ 765,424
Interior	\$ 304,704	\$ 1,932,721	\$ 236,038	\$ 17,045	\$ 2,490,508
HVAC	\$ -	\$ 550,811	\$ 868,706	\$ -	\$ 1,419,517
Plumbing	\$ -	\$ 242,699	\$ 501,900	\$ 129,011	\$ 873,610
Electrical	\$ -	\$ -	\$ 968,437	\$ 1,039,164	\$ 2,007,601
Fire & Safety	\$ -	\$ 259,987	\$ 403,144	\$ -	\$ 663,131
Technology	\$ -	\$ 344,436	\$ 126,816	\$ -	\$ 471,252
Specialties	\$ -	\$ 245,872	\$ 632,715	\$ 130,976	\$ 1,009,563
<b>Total</b>	<b>\$ 960,976</b>	<b>\$ 3,576,526</b>	<b>\$ 6,360,337</b>	<b>\$ 4,819,280</b>	<b>\$ 15,717,119</b>

- \*New modulares are purchased with federal dollars, must be used for federal purposes
- \*The playground and fall material was purchased with federal dollars
- \* Bussing is off street and has fencing
- \* ADA compliant in the back of the school but not the main entrance
- \* There is an elevator in the school

## Elementary Building Capacity Totals 2024-2025

### Washington Closure

School	# Classrooms	Student Capacity	Current Enrollment	Building Capacity %	Proposed Enrollment	Optimal Capacity	Proposed Building Capacity %	Preferred Staffing	Avg. Class Size	Additional Teachers Needed	Available Classrooms	
Chubbuck	24	672	421	62.65%	448	500	66.67%	20	22.40	3	5	ERR Classrooms- 2
Edahow	15	420	272	64.76%	265	300	63.10%	12	22.08	0	1	
Ellis	20	560	354	63.21%	398	400	71.07%	18	22.11	1	3	
Gate City	20	560	426	76.07%	389	400	69.46%	18	21.61	0	1	
Greenacres	17	476	287	60.29%	290	300	60.92%	12	24.17	-1	2	ERR Classrooms- 3
Indian Hills	28	784	498	63.52%	477	550	60.84%	22	21.68	1	0	ERR Classrooms- 2
Jefferson	20	560	358	63.93%	412	400	73.57%	18	22.89	1	1	
Lewis and Clark	22	616	403	65.42%	399	450	64.77%	18	22.17	0	4	Developmental K- 1
Syringa	21	588	322	54.76%	409	425	69.56%	18	22.72	4	4	
Tendoy	13	364	221	60.71%	271	275	74.45%	12	22.58	0	0	Preschool Classroom- 1
Tyhee	31	868	510	58.76%	528	600	60.83%	21	25.14	0	6	Montessori Classrooms- 3
Washington	17	476	257	53.99%	0	325	0.00%	12	0.00		1	GATE Classrooms- 2
Wilcox	28	784	467	59.57%	518	550	66.07%	24	21.58	2	1	ERR Classrooms- 2
		<b>7728</b>	4796			5475				11		

### Tendoy Closure

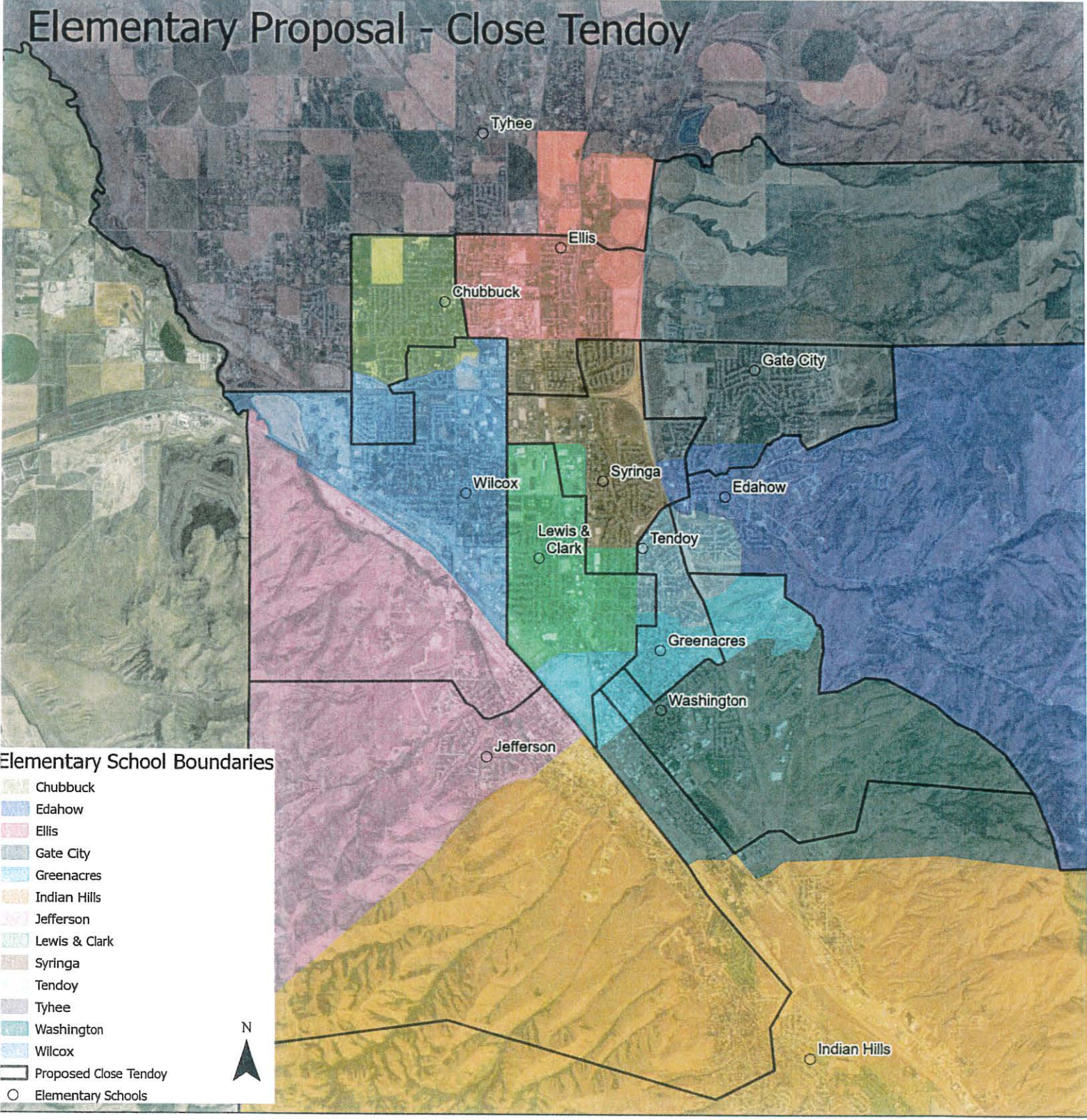
School	# Classrooms	Student Capacity	Current Enrollment	Building Capacity %	Proposed Enrollment	Optimal Capacity	Proposed Building Capacity %	Preferred Staffing	Avg. Class Size	Additional Teachers Needed	Available Classrooms	
Chubbuck	24	672	421	62.65%	448	500	66.67%	20	22.40	3	5	ERR Classrooms- 2
Edahow	15	420	272	64.76%	265	300	63.10%	12	22.08	0	1	
Ellis	20	560	354	63.21%	398	400	71.07%	18	22.11	1	3	
Gate City	20	560	426	76.07%	389	400	69.46%	18	21.61	0	1	
Greenacres	17	476	287	60.29%	273	300	57.35%	12	22.75	-1	2	ERR Classrooms- 3
Indian Hills	28	784	498	63.52%	477	550	60.84%	22	21.68	1	0	ERR Classrooms- 2
Jefferson	20	560	358	63.93%	412	400	73.57%	18	22.89	1	1	
Lewis and Clark	22	616	403	65.42%	399	450	64.77%	18	22.17	0	4	Developmental K- 1
Syringa	21	588	322	54.76%	409	425	69.56%	18	22.72	4	4	
Tendoy	13	364	221	60.71%	0	275	0.00%	0	#DIV/0!	0	0	Preschool Classroom- 1
Tyhee	31	868	510	58.76%	528	600	60.83%	21	25.14	0	6	Montessori Classrooms- 3
Washington	17	476	257	53.99%	288	325	60.50%	12	24.00	0	1	GATE Classrooms- 2
Wilcox	28	784	467	59.57%	518	550	66.07%	24	21.58	2	1	ERR Classrooms- 2
		<b>7728</b>	4796			5475				11		

**Balanced Enrollment Areas- No Closure**

School	# Classrooms	Student Capacity	Current Enrollment	Building Capacity %	Proposed Enrollment	Optimal Capacity	Proposed Building Capacity %	Current Staffing	Avg. Class Size	Additional Teachers Needed	Available Classrooms	
Chubbuck	24	672	421	62.65%	452	500	67.26%	17	26.59	0	5	ERR Classrooms- 2
Edahow	15	420	272	64.76%	265	300	63.10%	12	22.08	0	1	
Ellis	20	560	354	63.21%	364	400	65.00%	17	21.41	0	3	
Gate City	20	560	426	76.07%	389	400	69.46%	18	21.61	0	1	
Greenacres	17	476	287	60.29%	272	300	57.14%	13	20.92	0	2	ERR Classrooms- 3
Indian Hills	28	784	498	63.52%	437	550	55.74%	21	20.81	0	0	ERR Classrooms- 2
Jefferson	20	560	358	63.93%	396	400	70.71%	17	23.29	0	1	
Lewis and Clark	22	616	403	65.42%	369	450	59.90%	18	20.50	0	4	Developmental K- 1
Syringa	21	588	322	54.76%	371	425	63.10%	14	26.50	0	4	
Tendoy	13	364	221	60.71%	264	275	72.53%	12	22.00	0	0	Preschool Classroom- 1
Tyhee	31	868	510	58.76%	520	600	59.91%	21	24.76	0	6	Montessori Classrooms- 3
Washington	17	476	257	53.99%	272	325	57.14%	12	22.67	0	1	GATE Classrooms- 2
Wilcox	28	784	467	59.57%	433	550	55.23%	22	19.68	0	1	ERR Classrooms- 2
		<b>7728</b>	<b>4796</b>			<b>5475</b>				<b>0</b>		

\*capacity based on 28 students/classroom

# Elementary Proposal - Close Tendoy

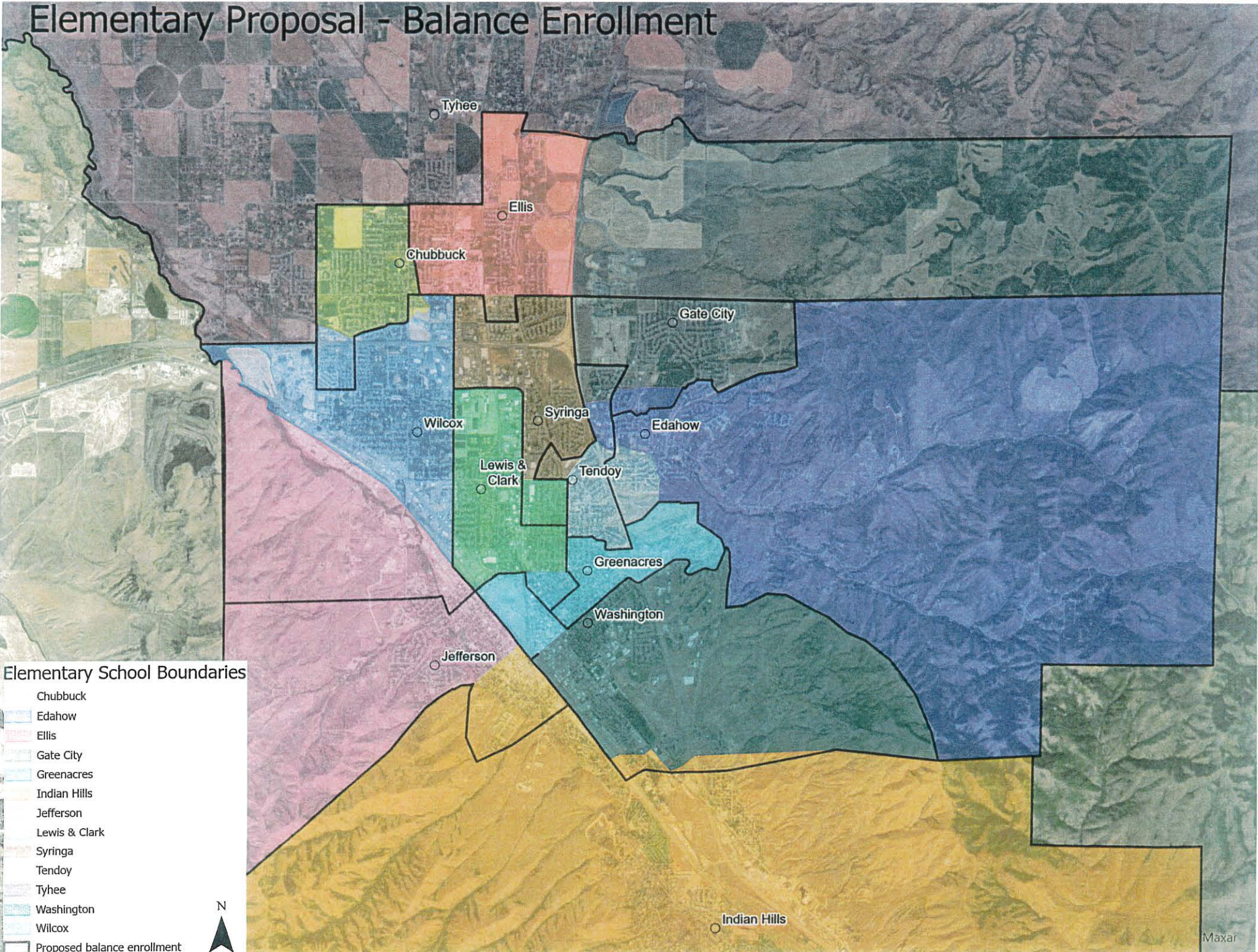


Tendoy Closure

School	Current Enrollment	Proposed Enrollment	Current FRAM %	Proposed FRAM %	Students Out	Students In	Net new
Chubbuck	423	448	39.95%	51.56%	60	161	101
Edahow	267	265	41.95%	43.40%	67	44	-23
Ellis	357	398	53.50%	57.29%	8	84	76
Gate City	430	389	21.86%	24.68%	59	57	-2
Greenacres	292	273	55.82%	63.00%	190	145	-45
Indian Hills	505	477	47.13%	54.09%	182	115	-67
Jefferson	365	412	66.85%	60.44%	145	182	37
Lewis & Clark	405	399	69.38%	68.17%	59	55	-4
Syringa	325	409	46.46%	49.63%	68	112	44
Tendoy	221	0	66.06%	#DIV/0!	221	0	-221
Tyhee	515	528	43.88%	39.39%	0	8	8
Washington	253	288	64.82%	42.36%	113	165	52
Wilcox	464	518	62.93%	59.27%	161	205	44
Totals	4,822	4,804			1,333	1,333	0

\*Total number of students affected= 1,333

# Elementary Proposal - Balance Enrollment



## Elementary School Boundaries

- Chubbuck
- Edahow
- Ellis
- Gate City
- Greenacres
- Indian Hills
- Jefferson
- Lewis & Clark
- Syringa
- Tendoy
- Tyhee
- Washington
- Wilcox
- Proposed balance enrollment



Balance Enrollment Areas- No Closure

School	Current Enrollment	Proposed Enrollment	Current FRAM %	Proposed FRAM %	Students Out	Students In	Net new
Chubbuck	423	452	39.95%	51.99%	17	122	105
Edahow	267	265	41.95%	43.40%	67	44	-23
Ellis	357	364	53.50%	56.04%	0	43	43
Gate City	430	389	21.86%	24.68%	59	57	-2
Greenacres	292	272	55.82%	47.06%	47	0	-47
Indian Hills	505	437	47.13%	43.02%	107	0	-107
Jefferson	365	396	66.85%	66.41%	64	85	21
Lewis & Clark	405	369	69.38%	69.92%	67	33	-34
Syringa	325	371	46.46%	50.40%	61	67	6
Tendoy	221	264	66.06%	57.95%	44	87	43
Tyhee	515	520	43.88%	40.00%	0	0	0
Washington	253	272	64.82%	63.60%	0	36	36
Wilcox	464	433	62.93%	58.43%	122	81	-41
Totals	4,822	4,804			655	655	0

\*Total number of students affected= 655