



Webster Public Schools

Title I Annual Meeting

December 17, 2024

Patty Mackay,
Director Title I
and ELL

What is Title I?

Our Office: 8:00 a.m. to 4:30 p.m. M-F

Title I, Part A (Title I) of the Elementary and Secondary Education Act (ESEA)

- provides financial assistance to districts and schools with high numbers or high percentages of children from low-income families to help ensure that all children meet challenging state academic standards

- ***Dr. Patricia Mackay***

Director of Title I and ELE

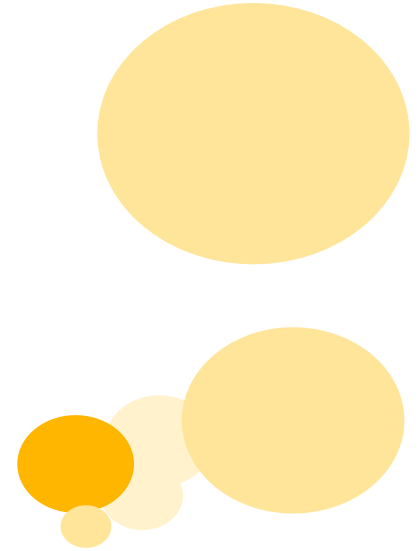
- ***Michelle Budney***

Project Manager for Curriculum

Primary Objectives - Title

I

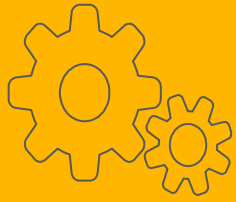
- Improve students achievement for all participating children
- Improve staff development
- Improve family/community involvement



What does Title I do for students?



- Serves elementary and secondary students who demonstrate a need for extra assistance
- Serves parochial and private school students
- Provides extra educational assistance beyond the regular classroom and school day/school year



How do schools in Massachusetts receive Title I funds?

- Census data - Economically Disadvantaged
- Department of Elementary and Secondary Education allocates funds to school districts
- Districts must apply for grant funds by submitting an application detailing proposed activities

How can districts use Title I funds?



- Additional instructional programs may be in class or outside of class
- Activities must be supplemental to services normally provided by school district (*supplement not supplant*)
- May fund extended day programs, PreK, summer programs, online learning, take-home resources, and tutoring
- Additional supportive programs: **professional development**, family engagement, materials and technology

What are the two types of Title I Programs?



- Schoolwide Program: serves all children in a school with poverty level of 40% or higher, all staff resources and classes are part of the overall program
- Targeted Assistance: individual students are targeted to receive services based on criteria and who attend individual schools that meet the eligibility criteria for poverty

Webster Public Schools

- Economically Disadvantaged – about 70%
- Students with Disabilities – 26.2%
- English Language Learners – 16.3%
- High Needs - 80%

How are Parents and Guardians and Families included?



- Planning, implementation and review of the Title I Program
- Parental surveys
- Family Engagement Activities
- Website
- Class DoJo
- School and District Newsletters

WPS Title I Funding

- Director of Title 1
- Project Manager
- Instructional Coach
- Reading Specialists
- Academic Interventionists
- Afterschool Programs
- Summer School Programs
- Family Literacy and Numeracy Nights
- Professional Development for Teachers
- Scientifically Research-based Intervention Programs
- Tumblebook Libraries





Review of Parent and Guardian Involvement Policies



TumbleBookLibrary



TumbleBook

Story books

Read
Alongs

Puzzles and
Games

Math Stories



School-Parent/Guardian Compact for SY 24-25

<p style="text-align: center;">School Responsibilities</p> <p style="text-align: center;">The School will:</p>	<p style="text-align: center;">Parent/Guardian Responsibilities</p> <p style="text-align: center;">We, as parents/guardians, will support our children's learning in the following ways:</p>	<p style="text-align: center;">Student Responsibilities</p> <p style="text-align: center;">I, the student, agree to do my best to:</p>
<ol style="list-style-type: none"> 1. Provide high-quality curriculum and instruction in a supportive and effective learning environment. 2. Hold high standards and expectations for student achievement. 3. Hold parent/guardian-teacher conferences during which this compact will be discussed. 4. Provide parents/guardians with frequent reports on their children's progress. 5. Provide parents/guardians reasonable access to staff. 	<ol style="list-style-type: none"> 1. Making sure our child arrives to school on time and attends school every day. 2. Making sure that homework is completed. 3. Monitoring my child's progress regularly. 4. Ensuring my child reads every day. 5. Attending conferences, open houses, and other school events to the best of my ability. 6. Communicating with the school by promptly reading all notices from the school or district. 	<ol style="list-style-type: none"> 1. Be at school on time unless I am sick. 2. Do my homework every day and ask for help when I need to. 3. Read at least 30 minutes every day outside of school time. 4. Give to my parents or the adult who is responsible for me all notices and information from my school.

The Webster Public Schools and the parents/guardians of the students participating in activities, services, and programs funded by Title I, agree that this compact outlines how parents/guardians, the entire school staff, and students will share the responsibility for improved student academic achievement and the means by which the school and parents/guardians will build and develop a partnership that will help children achieve the State's high standards.

Learning Standards - Family Guides

Family Guides - DESE

These guides to the Massachusetts learning standards help families understand what students are expected to know and be able to do by the end of each grade in English Language Arts and literacy, mathematics, science and technology/engineering, and history and social science.

Designed to help families and teachers work together to support learning, the guides are available in English, Spanish, Brazilian Portuguese, and Simplified Chinese.