



South Orange-Maplewood Schools
Additions and Renovations
Jefferson & Clinton Elementary Schools

MARCH CONSTRUCTION ACTIVITIES

JEFFERSON ELEMENTARY SCHOOL

- Contractor continued working on submittals for review/approval
- Contractor continued working on RFI's for review
- Epic continued to document on work underway and building conditions
- Contractor completed all footings and backfilled 95% of the areas.
Ongoing.
- Contractor framing around columns
- Contractor continued work on sloped roof metal framing and plywood.
- Contractor planning on starting exterior CMU Block.
- Contractor installed addition lintel at ramp opening area.
- Contractor worked on sealing plywood at exterior sloped areas.

CLINTON ELEMENTARY SCHOOL

- Contractor continued working on submittals for review/approval
- Contractor continued working on RFI's for review
- Epic continued to document on work underway and building conditions
- Electrician continued working in conjunction with Masons for new outlets
in area A. Ongoing.
- Contractor poured slab for new switchgear
- Contractor completed CMU block in area A.
- Contractor started with brick installation at area C.
- Contractor continue working on installation of new Switchgear.
- HVAC continue contractor started running pipe in new areas and
Ductwork.
- Plumbing contractor worked on water lines to bathroom at area A.



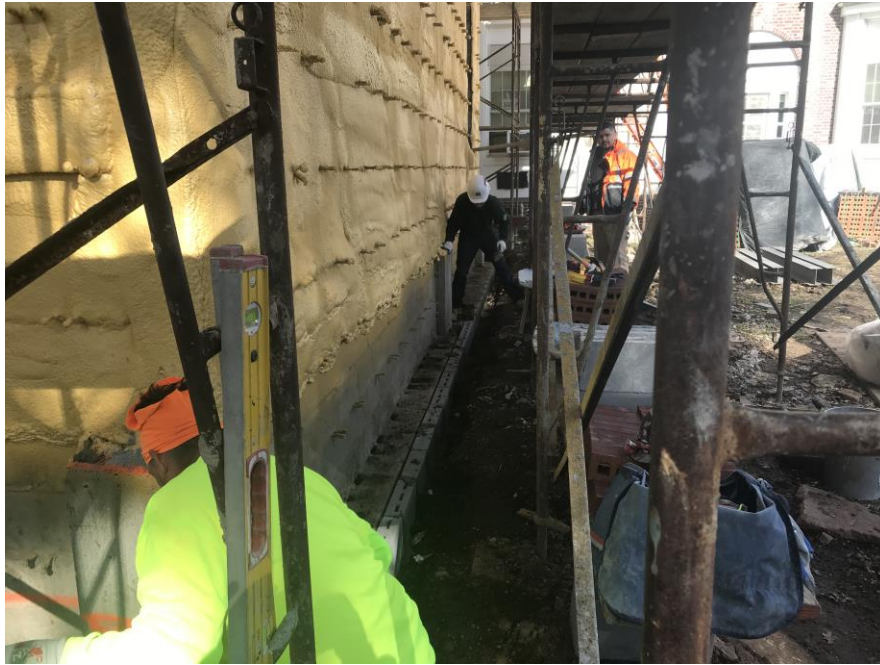
*Continued with metal framing and plywood and sealing -
Jefferson Elementary School*



Framing at exterior columns underway - Jefferson Elementary

Epic Management, Inc.

136 Eleventh Street • Piscataway, NJ 08854
732-752-6100 • Fax 732-752-9106



Brick footing at area C underway - Clinton Elementary School



Brick veneer wall at Area C underway - Clinton Elementary School

Epic Management, Inc.

136 Eleventh Street • Piscataway, NJ 08854
732-752-6100 • Fax 732-752-9106