



South Orange-Maplewood Schools
Additions and Renovations
Jefferson & Clinton Elementary Schools

NOVEMBER CONSTRUCTION ACTIVITIES

JEFFERSON ELEMENTARY SCHOOL

- Contractor continued working on submittals for review/approval
- Contractor continued working on RFI's for review
- Epic continued to document on work underway and building conditions
- Electricians continued working on transformer switch.
- PSE&G completed the new gas relocation.
- PSEG completed new gas meter installation on 11/5/21.
- New Transformer completed by PSE&G on 11/4/21.

CLINTON ELEMENTARY SCHOOL

- Contractor continued working on submittals for review/approval
- Contractor continued working on RFI's for review
- Epic continued to document on work underway and building conditions
- Electricians to work on feeders and receptacles.
- Contractor installed new drinking water fountains.
- Contractor to completed demolition of windows adjacent to Addition A and in filled openings as per their work scope.



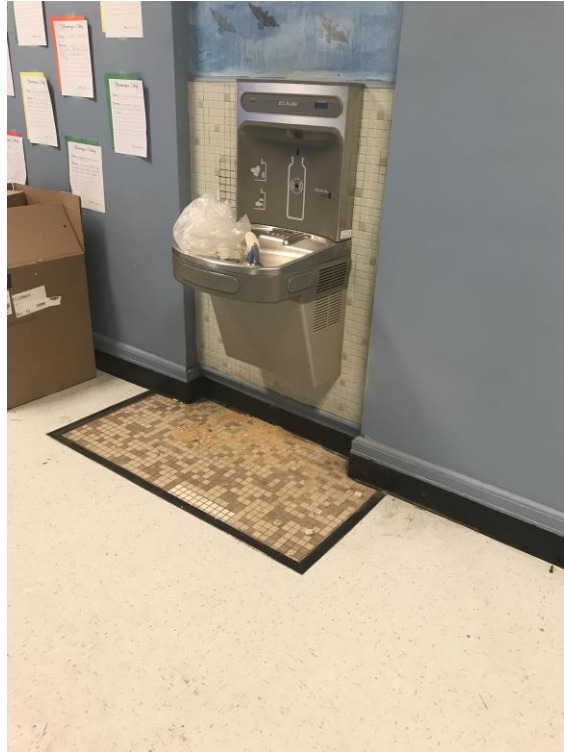
Masons infilling Window Opening – Clinton Elementary School



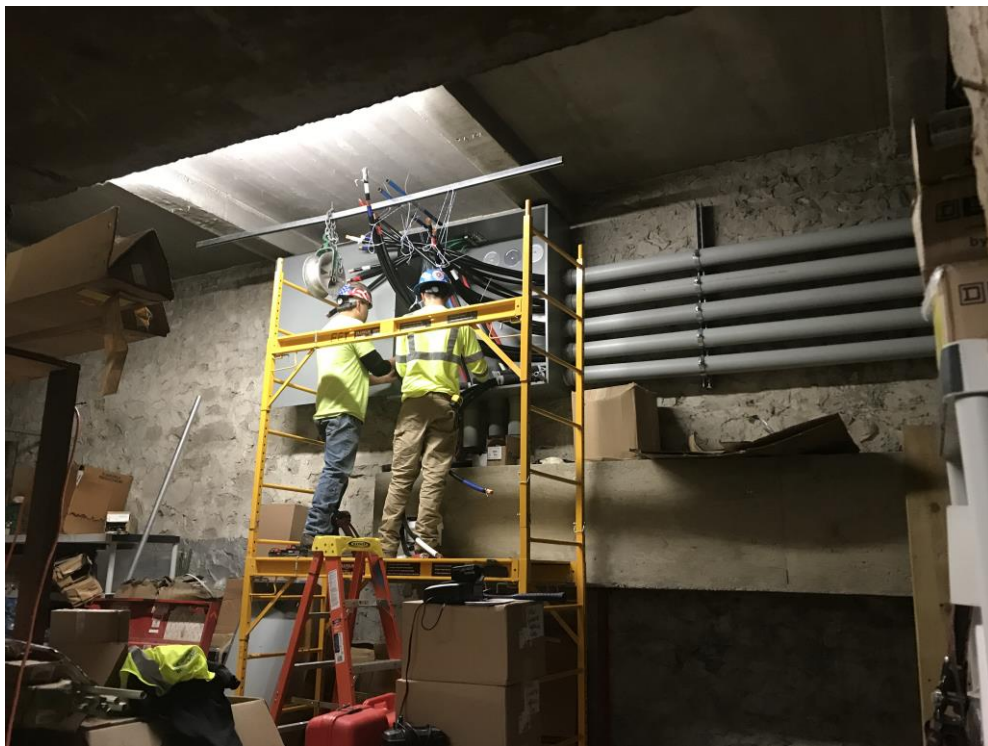
New gas Meter completed - Jefferson Elementary School

Epic Management, Inc.

136 Eleventh Street • Piscataway, NJ 08854
732-752-6100 • Fax 732-752-9106



New Water Drinking Fountain – Clinton Elementary School



New Electric Feeders underway - Jefferson Elementary School

Epic Management, Inc.

136 Eleventh Street • Piscataway, NJ 08854
732-752-6100 • Fax 732-752-9106