



South Orange-Maplewood Schools  
Additions and Renovations  
Jefferson & Clinton Elementary Schools

**AUGUST CONSTRUCTION ACTIVITIES**

**JEFFERSON ELEMENTARY SCHOOL**

- Contractor continued working on submittals for review/approval
- Contractor continued working on RFI's for review
- Epic continued to document on work underway and building conditions
- Contractor continued working on FA cable in ground floor corridor and Classrooms.
- Began closing up all ceilings.
- Backfilled trench for transformer conduits and encased Electric feeder in Concrete per PSEG Requirements.
- Finish sidewalks around any open areas
- Paved areas that needed to be paved.
- Cleaned areas and construction materials out of the school.
- Continue working on site utilities.
- Move contractor's gang boxes / tools out of building.

**CLINTON ELEMENTARY SCHOOL**

- Contractor continued working on submittals for review/approval
- Contractor continued working on RFI's for review
- Epic continued to document on work underway and building conditions
- Electrical contractor continued working on 1<sup>st</sup> and 2<sup>nd</sup> floor speaker strobe
- Site contractor cleaning up and completed Belgium block for curbs.
- Contractor to continue work on foundation walls at area C and A.
- Contractor paved site as required for any areas they worked on.
- Continue insulating Hot water piping.
- Testing FA devices.
- Clean areas and construction materials out of the school.

Epic Management, Inc.



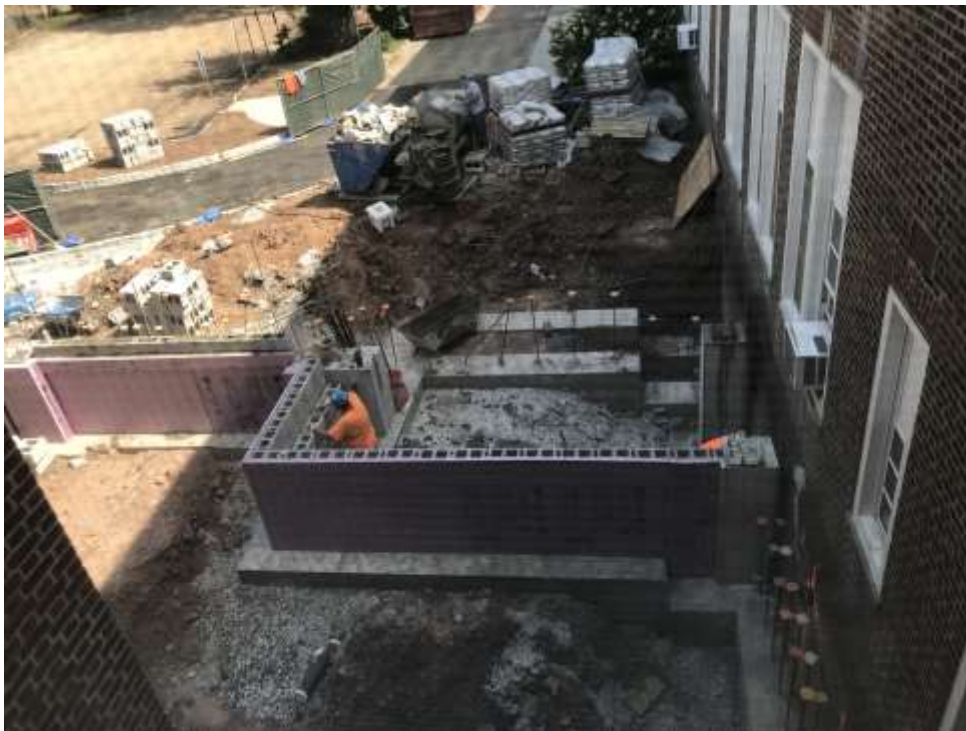
*Paving Primary Feeders to Transformer – Jefferson Elementary School*



*Pathway to side of School – Clinton Elementary School*



*New VCT floors – Jefferson Elementary School*



*CMU Block at Addition A -Clinton Elementary School*