



South Orange-Maplewood Schools
Additions and Renovations
Jefferson & Clinton Elementary Schools

AUGUST CONSTRUCTION ACTIVITIES

JEFFERSON ELEMENTARY SCHOOL

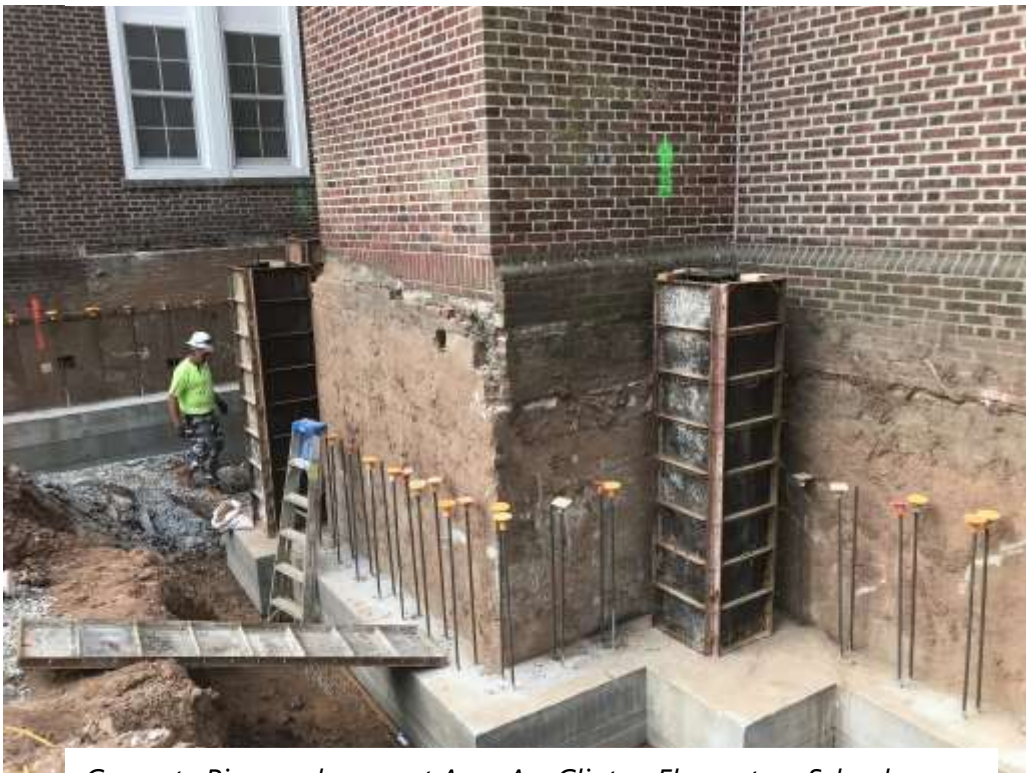
- Contractor continued working on submittals for review/approval
- Contractor continued working on RFI's for review
- Epic continued to document on work underway and building conditions
- Contractor continued pulling FA cable in ground floor corridor and Classrooms.
- Continued 1st floor Main Hot water Piping.
- Sawcut and trench for transformer conduits ongoing.

CLINTON ELEMENTARY SCHOOL

- Contractor continued working on submittals for review/approval
- Contractor continued working on RFI's for review
- Epic continued to document on work underway and building conditions
- Electrical contractor continued working on 1st and 2nd floor speaker strobe and backbox
- Electrical contractor continued working on 1st floor wiring supports in corridor and install ridged conduit for existing service.
- Site contractor working on storm tie-in from addition C.
- Site contractor cleaning up and begin Belgium block for curbs.
- Contractor continued working on re-bar and form for addition A and C.
- HVAC Contractor continue working on hangers and supports for hot water piping on 1st floor. Pre test Hot water piping mains.
- Continue insulating Hot water piping.



Trench and transformer Pad located – Jefferson Elementary School



Concrete Piers underway at Area A – Clinton Elementary School



Pouring Piers at Addition C– Clinton Elementary School



Pathway area prep work underway– Clinton Elementary School