



George Mason Modernization

Virtual Community Meeting
Office of Capital Programs, Planning & Design
December 16, 2024





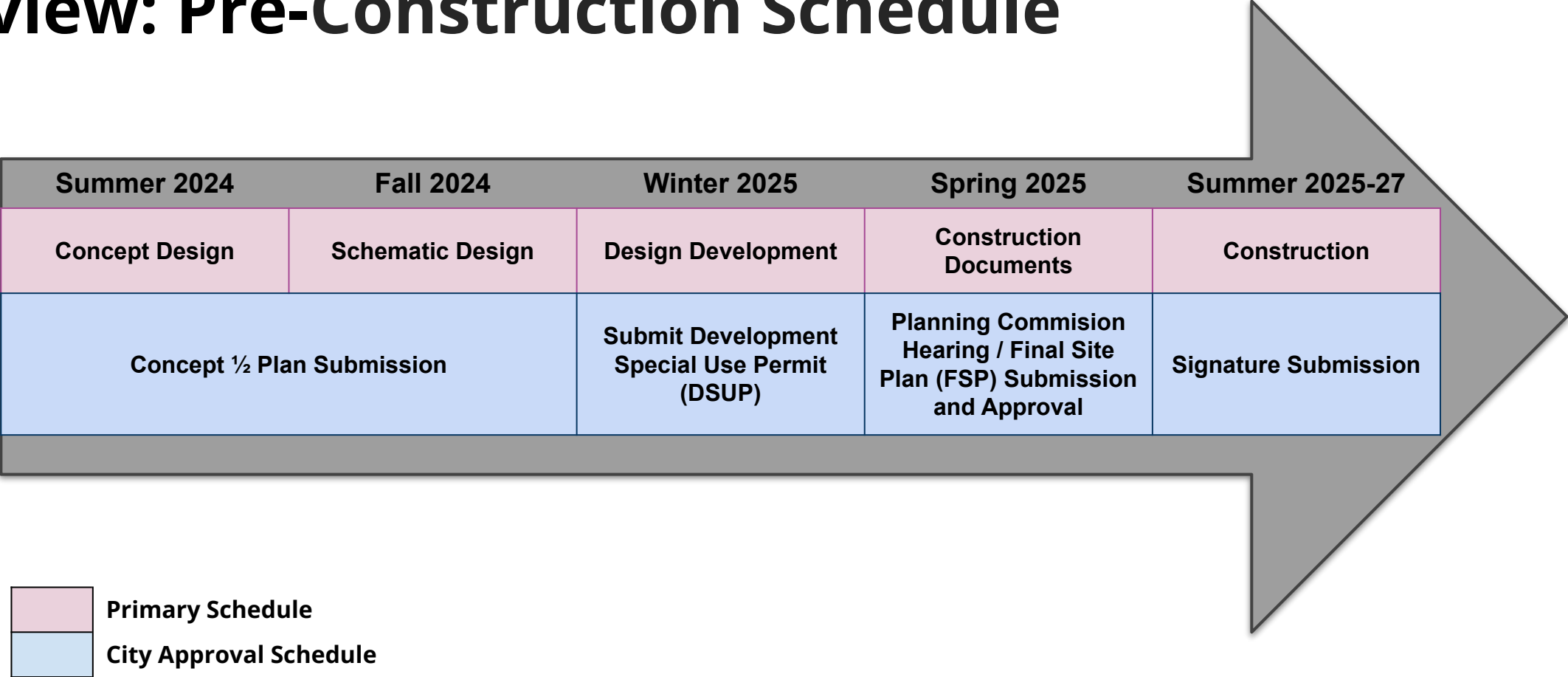
Agenda

- Pre-Construction Schedule
- Parking and Traffic Study
- Schematic Design: Site and Interior Organization and Materials
- Next Steps
- Q&A - Use the Q&A Feature





Review: Pre-Construction Schedule

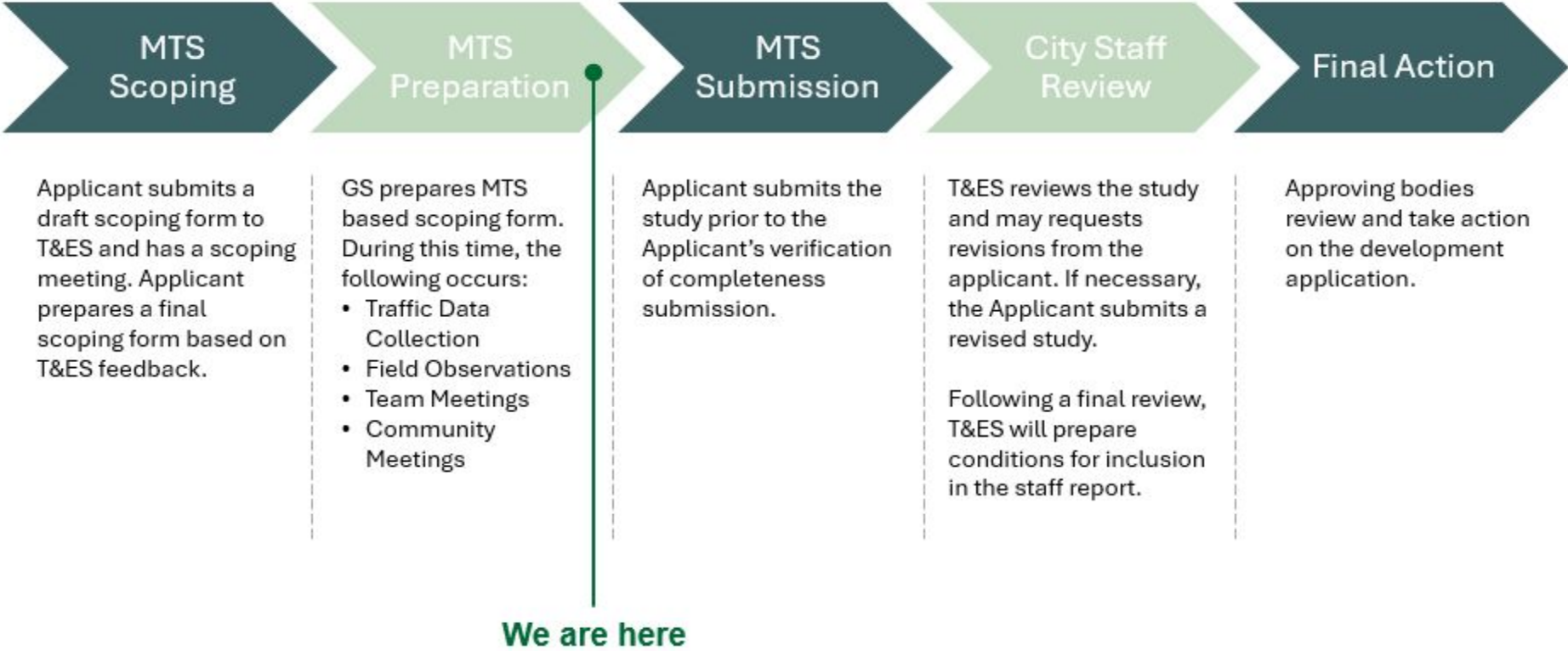


*Note: These are tentative dates and subject to change



MTS Process & Timeline

Multimodal Transportation Study (MTS)





Proposed Pick-Up/Drop-Off Facility

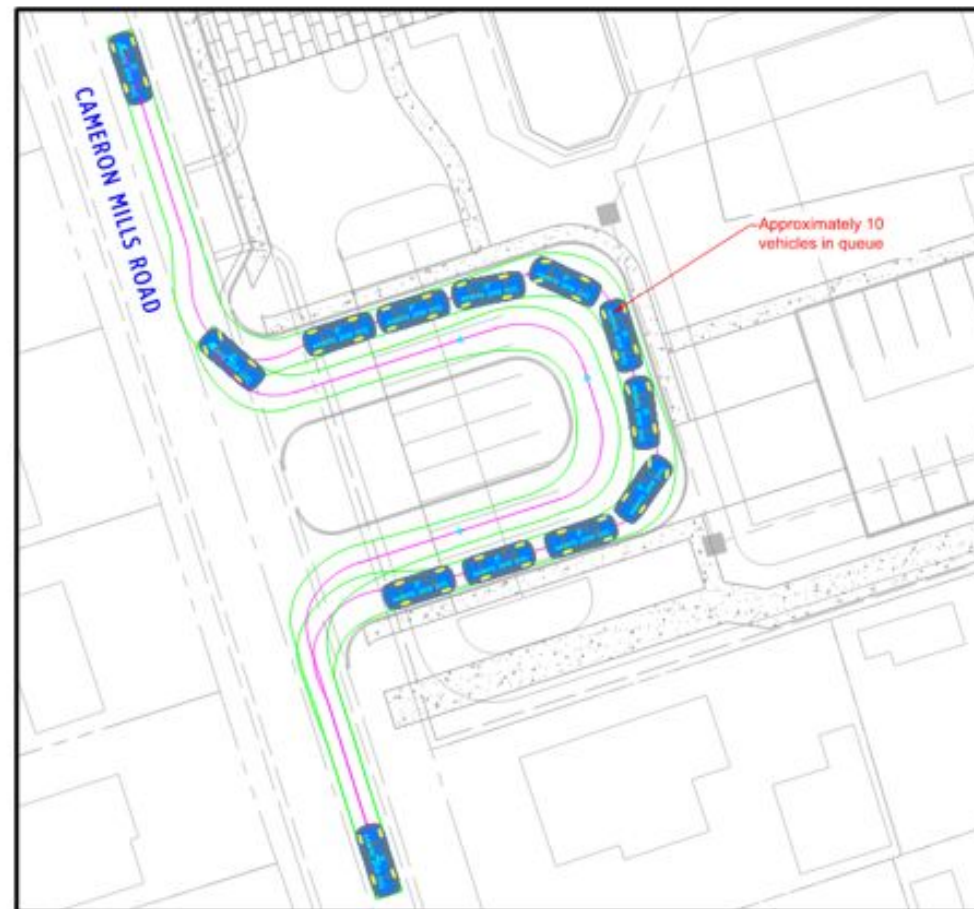
Balancing Competing Interests

- Avoid overdesigning a large pick-up/drop-off facility that would result in significant extra pavement on-site and encourage driving instead of walking/biking
- Avoid providing too little pick-up/drop-off space such that parents drop off students far away from the site or in places where it is less safe to do so

Recommendation:

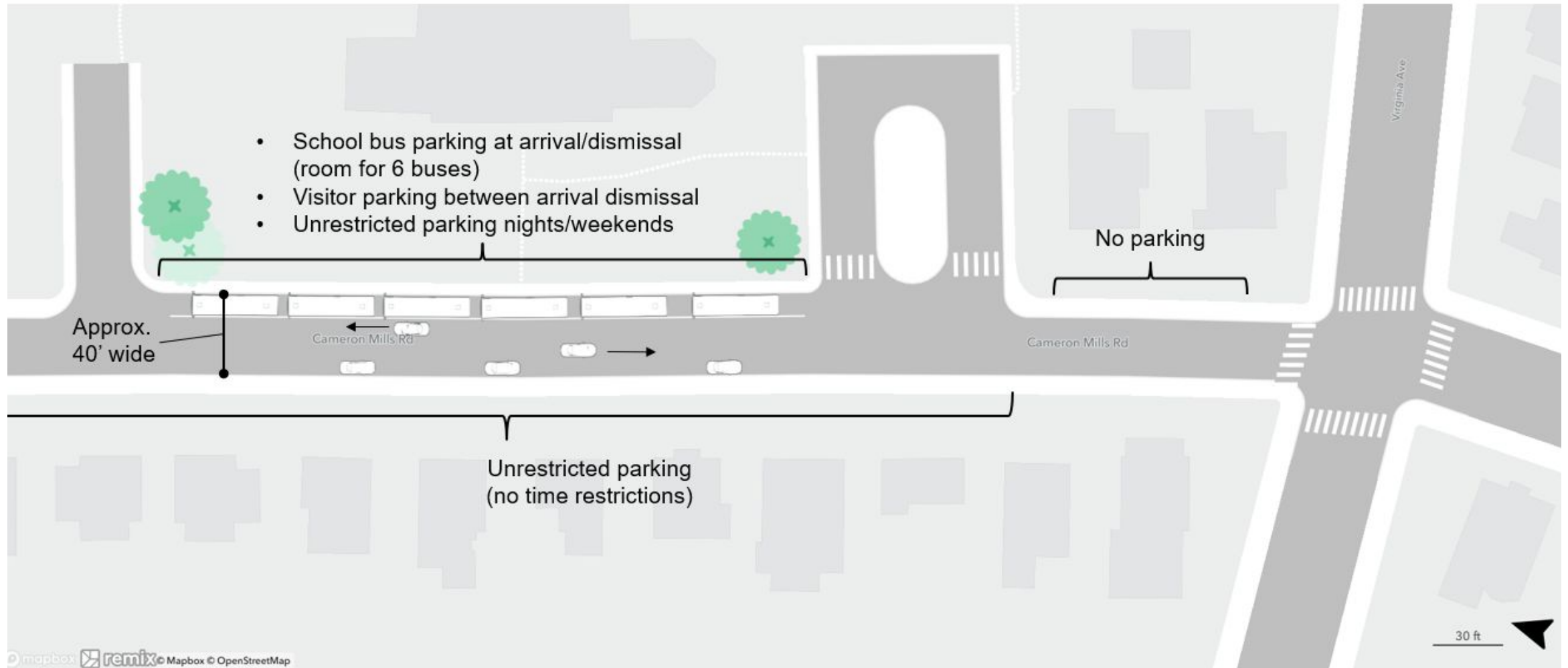
- Provide space for approximately half of the expected peak dismissal demand in the official designated area
- Remaining demand would occur in other unofficial areas or queue on Cameron Mills Road

	Existing	Future
Population		
Students	320 students	670 students
Staff	65 employees	80 employees
Demand		
Buses Serving Demand	4 buses	6 buses
Max Dismissal Queue	10 vehicles	21 vehicles





Cameron Mills Road: Proposed Conditions





Existing Vehicular Parking

Parking demand adjacent to the school (during school hours) peaked at Noon

School staff observed parking:

- On Site (21) cars
- Church parking lot (20 cars)
- On Street (21 cars)

Overall parking adjacent to school was 30% occupied with 152 of 506 spaces being used.

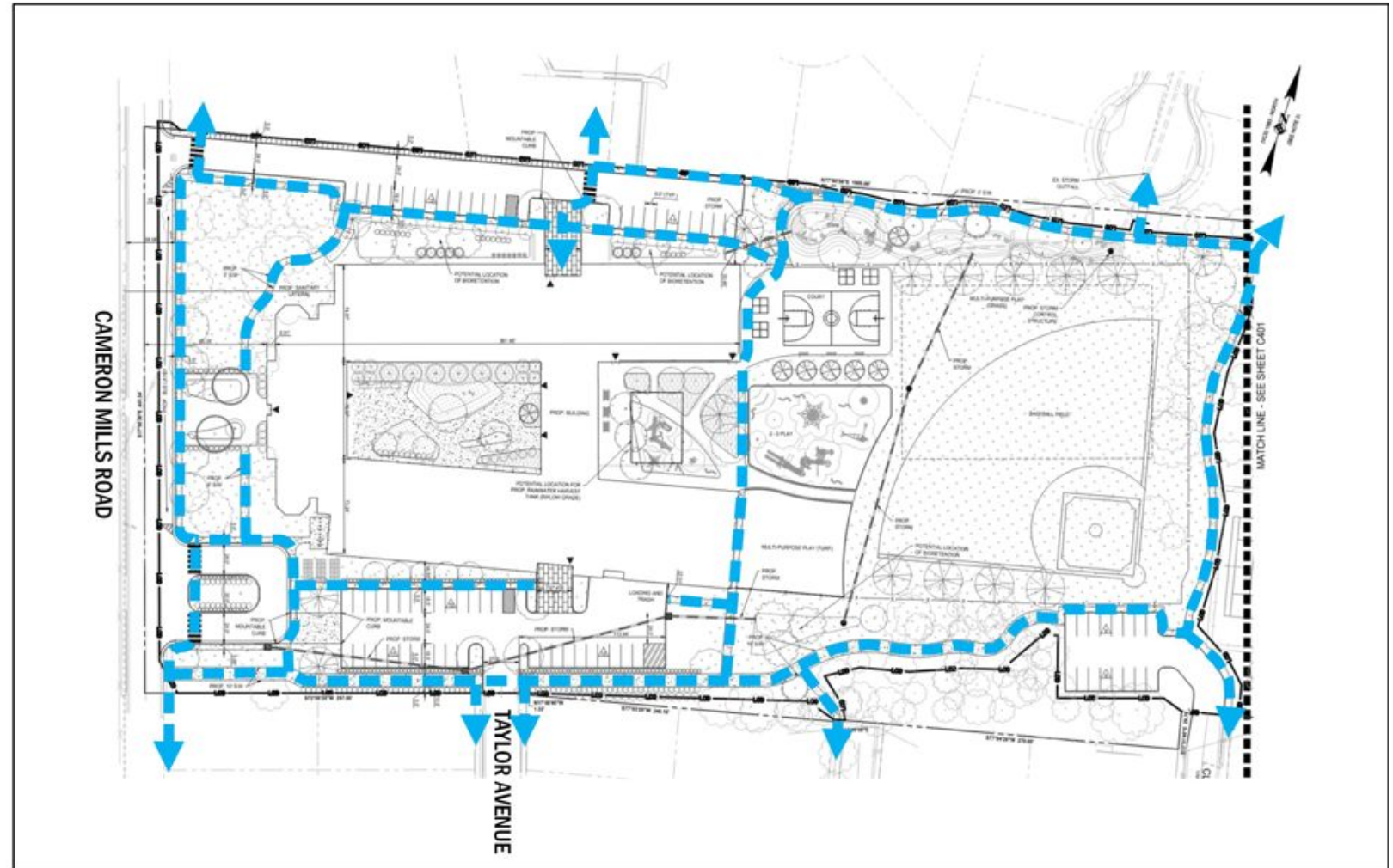




Proposed Site Operations: Walking Routes

Safe Routes to School survey found 36% of students walk to school

Recommend providing porosity through the site to enable walking access for students coming from different directions





RESULTS-DRIVEN

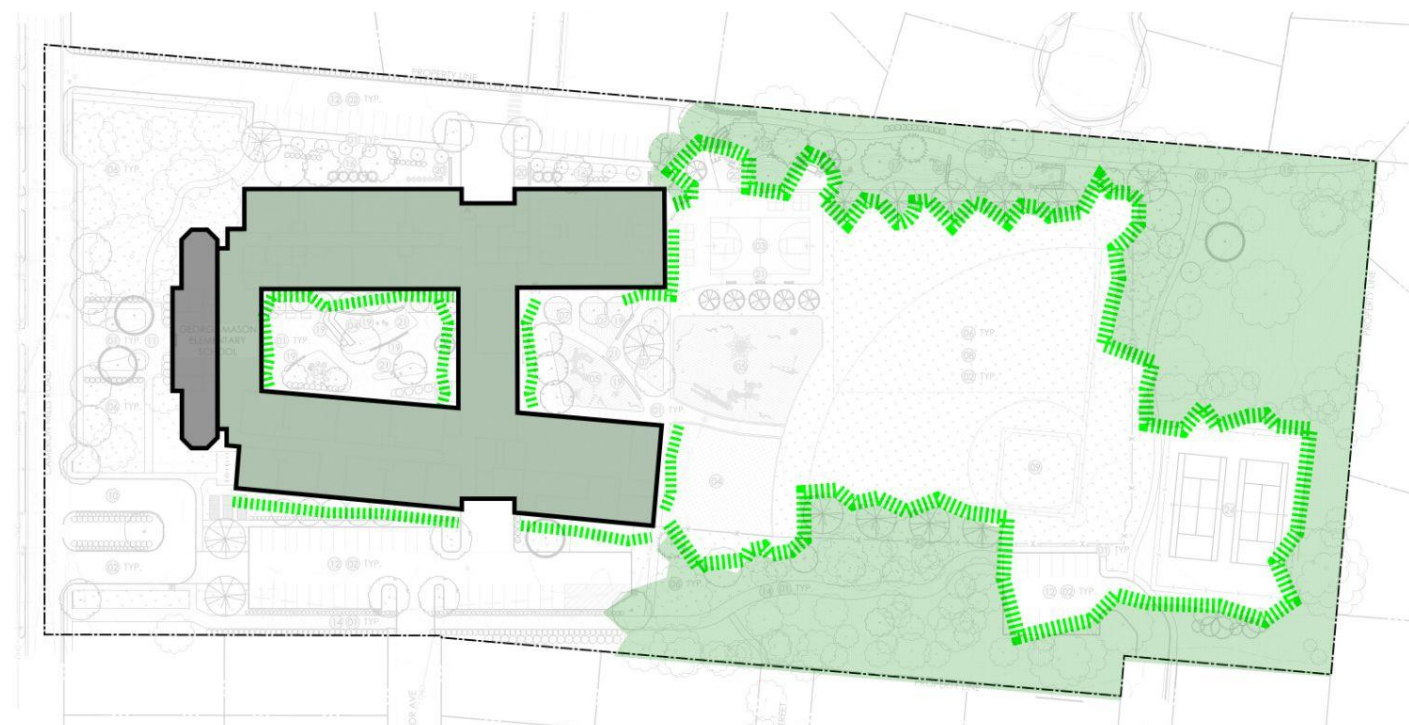
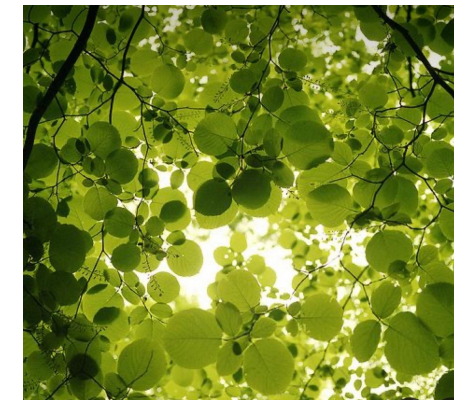
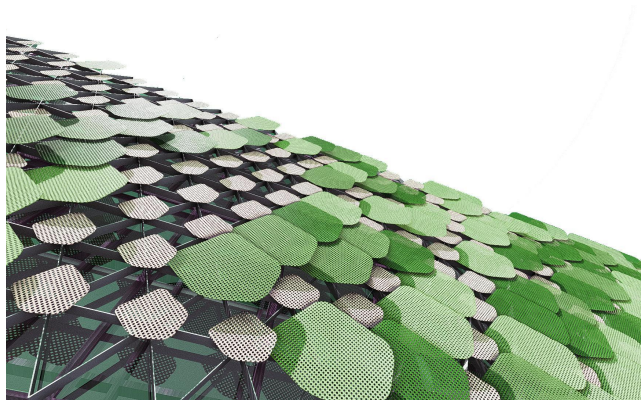
Site Organization





RESULTS-DRIVEN

Screen Concept - "Leaves"





RESULTS-DRIVEN

1st Floor







RESULTS-DRIVEN

Interior Renderings: Classrooms





RESULTS-DRIVEN

Interior Renderings: Dining





Next Steps

- Finalize Contract with Construction Manager At Risk (CMAR)
- Develop Cost Estimates
- Meet with ACPS Stakeholders
- Refine Schematic Design:
 - ❖ Construction Type ❖ Space Utilization
 - ❖ Material Selection ❖ Mechanical/Electrical Systems



Engagement

→ Schematic Design Phase: On-Going

→ Superintendent's Advisory Team Meeting

- ◆ **Date:** Weds., Dec. 18, 2024
- ◆ **Time:** 6:30 pm - 7:30 pm
- ◆ **Location:** [Online](#)

→ Communications:

- ◆ Information communicated on the [Capital Programs, Planning, and Design Webpage](#) & [George Mason Modernization Webpage](#)
- ◆ Sign up for our [CIP Newsletter](#)
- ◆ Community members can send questions, comments and concerns to: [Ask ACPS](#)



Contacts

Arte'a Funderburk, *CIP Communications Specialist*

artea.funderburk@acps.k12.va.us

Sophie Huemer, *Director of Capital Programs, Planning and Design*

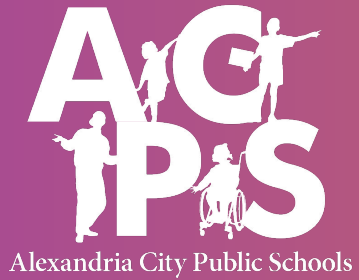
sophie.huemer@acps.k12.va.us

Arthur Carpenter-Holmes, *Senior Capital Program Manager*

arthur.carpenter-holmes@acps.k12.va.us

Roberto Ruiz, *Principal Planner*

roberto.ruiz@acps.k12.va.us



Questions?

Enter your questions using the Q&A Feature!



Superintendent

Dr. Melanie Kay-Wyatt

School Board

Michelle Rief, Chair
Kelly Carmichael Booz, Vice Chair

Meagan L. Alderton
Tim Beaty

Abdel-Rahman Elnoubi
Jacinta Greene
W. Christopher Harris

Tammy Ignacio
Ashley Simpson Baird