



CONSTRUCTION MANAGER'S STATUS REPORT



PROJECT: South Orange and Maplewood School District
Seth Boyden/ Tuscan School Project
Maplewood, NJ

REPORT FOR: The period ending August 31, 2022

DATE of REPORT: September 15, 2022

**Seth Boyden/ Tuscan School Project
Construction Manager's Status Report
August 31, 2022
Page 2**

Outline:

- I. Project Team
- II. Project Information
- III. Construction Manager's Report
 - A. Activities performed during the month of August 2022
 - B. Activities planned for the month of September 2022
- IV. Potential and Critical Issues
- V. Submittal Status
- VI. Code Inspections
- VII. Equal Opportunity Employment
- VIII. Safety and Loss Prevention
- IX. Quality Assurance
- X. Construction Schedule Status
- XI. Change Order Log
- XII. Allowance Log
- XIII. Payment Log
- XIV. Photographs

**Seth Boyden/ Tuscan School Project
Construction Manager's Status Report
August 31, 2022
Page 3**

I. Project Team:

Epic Management, Inc. (Construction Manager)

William Costello- Vice President / Project Executive

Kathleen Tartaglia- AIA, LEED AP, Preconstruction and LEED Coordinator

David Palus- Project Manager

APS, Contracting, Inc. (General Contractor)

Svetozar Savreski- President

Dimitri Mitranov - Project Manager

II. Project Information:

The Seth Boyden and Tuscan schools consist of a new classroom addition and renovations to the existing schools HVAC system which includes, but is not limited to, new boiler, hydronic piping and vertical classroom HVAC units. The schools shall also receive new roofs in specified areas and renovations/alterations to existing classroom and support facilities.

III. Construction Manager's Report

A. Activities performed during the month of August 2022

Seth Boyden School

- Continue with the electrical low voltage wiring.
- Continue with the new classroom VUV and duct installation.
- Continue with the existing classrooms VUV and duct installation.
- Continue with the classroom baseboard piping.
- Continue with the auditorium duct installation at the attic.
- Set the RTU curbs at the roof.
- Continue with the existing schools fire alarm device wiring and programming.
- Continue with the new boiler's installation.
- Continue with the classroom flooring installation.
- Complete the majority of the roofing replacement with the exception of the gym roof.
- Begin the gym truss repair.
- Continue with the main office renovation.
- Continue with the existing school PA and fire alarm wiring.
- Complete the sanitary and storm line piping connection.
- Begin the water line installation for the new addition.

continue

Seth Boyden/ Tuscan School Project
Construction Manager's Status Report
August 31, 2022
Page 4

- Continue with the flooring installation.
- Continue with the sprinkler piping work.
- Continue with the stair tread installation.
- Continue with the door installation throughout the building.
- Continue with the classroom HVAC control wiring and thermostat installation.

Tuscan School

- Continue with the classroom low voltage wiring.
- Continue with the existing classrooms VUV and duct installation.
- Completed the north corridor brick installation.
- Continue with the main office renovation.
- Continue with the two connecting corridor openings leading to the new addition.
- Continue with the classroom flooring installation.
- Continue with the courtyard curtain wall installation.
- Continue with the door installation throughout the building.
- Continue with the classroom HVAC control wiring and thermostat installation.
- Continue with the new fire alarm and PA programming.
- Begin the Gymnasium HVAC duct work and placement of the RTU's
- The owner is continuing with the main office server relocation.

B. Activities planned for the month of September 2022

Seth Boyden School

- Continue with the electrical low voltage wiring.
- Complete the auditorium duct installation at the attic.
- Set the RTU's.
- Continue with the existing schools fire alarm device wiring and programming.
- Continue with the new boiler's installation.
- Complete the classroom flooring installation.
- Continue with the gym truss repair.
- Continue with the existing school PA and fire alarm wiring.
- Continue with the door installation throughout the building.
- Continue with the sprinkler work at the stair tower and sprinkler room.
- Complete the water line installation for the new addition.
- Complete the flooring installation.
- Continue with site work activities.
- Complete the bathroom fixture installations for the new classroom addition.

Tuscan School

- Continue with the classroom low voltage wiring.
- Complete the flooring installation.
- Continue with the door installation throughout the building.
- Continue with the classroom HVAC control wiring and thermostat installation.
- Continue with the new fire alarm and PA programming.
- Complete the bathroom fixture installations for the new classroom addition.
- Begin the installation of the new hot water boiler pumps.

Potential and Critical Issues

- 1 Steel joist and metal decking delivery delay:** *(For previous critical issues refer to December 2021 PM report, January 2022 Report and February Report)*

Tuscan School Schedule -Update 2-28-22

APS's updated schedule for the Tuscan school shows a substantial -38 work day delay for the new classroom addition in which they contribute once again to the late steel joist and metal decking delivery. The reflected completion date of October 7th is unacceptable and must be brought back to the contractual date in August. The Tuscan school project schedule is rejected, and an updated schedule is to be immediately provided; in addition, APS is to clearly convey how they plan on getting the project back on track. Update 3-31-22: The February Tuscan School schedule is rejected based on Epic's March 15th schedule comments. As previously stated, APS is to incorporate the actual start/completion dates and address Epic concerns/issues into the construction schedule so that we have a realistic timeframe for completed work activities. APS must revise the schedule to allow the school to open in September 2022. Update 4-30-22:

APS's March and April monthly schedule update is overdue, APS indicated both schedules will be provided the first week in May. Epic indicated that according to the February schedule the following activities are falling behind: Metal exterior framing and Brick Veneer. APS noted that the brick material will be on site the first week in May. Update 5-31-22: APS's March and April monthly schedule update is overdue. Update 6-30-22: Epic indicated that construction activities are slipping as indicated in APS's June schedule update. The June Tuscan School schedule is rejected and must be revised to allow the school to open in September 2022. Update 7-31-22: The July Tuscan School schedule is rejected and must be revised to allow the school to open in September 2022. **Update 8-31-22:** APS to provide the August schedule update.

2 Seth Boyden School Existing Gym Roof truss:

The Seth Boyden Schools existing gym roof truss has settled (Failed), both upper and lower gyms have been closed off and efforts are being made to provide temporary shoring. The school administration is evaluating the corrective measures. Update 2-28-22: temporary shoring has been installed and a closer inspection of roof rafter can be performed by the design team. Update 3-31-22: Truss review/design is being evaluated by the design engineer. Update 4-30-22: The truss repair design has been provided by Spiezle and APS will be providing their proposal for review to perform the corrective work. Pending 5-31-22. Update 6-30-22: The Change Order was approved, and the paperwork is being processed. Corrective truss work is to begin in July. Update 7-31-22: Work to be started by APS. **Update 8-31-22:** Additional design modification being reviewed for the support of the existing ceiling joist that are perpendicular to the truss members.

IV. Submittal Status

- The submittal process is basically completed with the exception of a couple final submissions for record purpose.

V. Code Inspections

- Final code inspections are continuing to be performed for the new classroom addition and office renovation areas.

VI. Equal Opportunity Employment

- Epic has advised APS Contracting to comply with the requirements of the project regarding Affirmative Action. Manning reports will be provided by the contractor and submitted with payment applications.

VII. Safety and Loss Prevention

- Although APS Contracting is responsible for safety during the course of the Project, Epic will also be performing safety reviews. Safety is also discussed at each project meeting, wherein APS is reminded to abide by all OSHA and local safety guidelines.

VIII. Quality Assurance

- Epic Management will monitor the work of all contractors during the construction of the project for quality assurance compliance. No issues to date.

IX. Construction Schedule Status

Tuscan School Schedule -

The Tuscan school updated schedule shows a substantial -38 work day delay for the new classroom addition. APS states that the schedule is behind because of the Steel/Decking material delay and still seeks compensation for additional manpower to accelerate the schedule for a September completion. Epic Management indicated that the schedule is unacceptable and must be brought back to the contractual August completion date. The Tuscan school project schedule is rejected and an updated schedule is to be immediately provided; in addition, APS is to clearly convey how they plan on getting the project back on track. Update 3-31-22: The February Tuscan School schedule is rejected based on Epic's March 15th schedule comments. As previously stated, APS is to incorporate the actual start/completion dates and address Epic concerns/issues into the construction schedule so that we have a realistic timeframe for completed work activities. APS must revise the schedule to allow the school to open in September 2022. Update 4-30-22: APS's March and April monthly schedule update is overdue, APS indicated both schedules will be provided the first week in May. Epic indicated that according to the February schedule the following activities are falling behind: Metal exterior framing and Brick Veneer. APS noted that the brick material will be on site the first week in May. Update 5-31-22: APS's March and April monthly schedule update is overdue. Update 6-30-22: The June Tuscan School schedule is rejected and must be revised to allow the school to open in September 2022. Update 7-31-22: The July Tuscan School schedule is rejected and must be revised to allow the school to open in September 2022. **Pending 8-31-22:** July Updates received on August 31st from APS, schedule review to be performed; however, initial review indicates rejection of the schedule.

**Seth Boyden/ Tuscan School Project
Construction Manager's Status Report
August 31, 2022
Page 8**

Seth Boyden School Schedule – (For previous information refer to the February and April PM Report)

Update 4-30-22: APS's March and April monthly schedule update are overdue, APS indicated both schedules will be provided the first week in May. Epic indicated that according to the February schedule the following activities are falling behind: CMU parapet installation, Brick veneer and Steel stair installation. APS noted that the stair steel will begin on May 9th. Update 5-31-22: As per discussions during the weekly project construction meetings, APS states that the new classroom addition/renovation does not show any delays at this point in time; however, the April Seth Boyden School schedule update indicates slippage in construction activity line items as noted in Epic's Schedule review. APS's schedule requires adjustments to be performed that reflect the actual progress of the work in the field. Update 6-30-22: APS's June Seth Boyden School schedule update continues to indicate slippage in construction activity line items. APS's schedule requires adjustments to be performed that reflect the actual progress of the work in the field. Update 7-31-22: APS's June Seth Boyden School schedule update continues to indicate slippage in construction activity line items. APS's schedule requires adjustments to be performed that reflect the actual progress of the work in the field.

Pending 8-31-22: July Updates received on August 31st from APS, schedule review to be performed; however, initial review indicates rejection of the schedule.

X. Change Order Log

- See attached Change Order Log dated August 31, 2022

XI. Allowance Log

- See attached Allowance Log dated August 31, 2022

XII. Payment Log

- See attached Payment Log dated August 31, 2022

XIV. Photographs



Seth Boyden School- Second Floor Corridor



Seth Boyden School- Auditorium Roof



Tuscan School- Gym/Auditorium RTU



Tuscan School- Exterior HVAC Condensers

Project:
South Orange Maplewood School District
Seth Boyden and Tuscan Schools

Construction Cost

Allowance No: AL-01 General Allowance Summary

August 31, 2022

Authorization #	CMS File #	Description	Amount Requested	Amount Approved	Remarks
GC- #1	27-4	PCO #0004- Seth Boyden School Boiler Temp Power	\$7,098.05	\$7,098.05	Approved
GC.#2	27-6	PCO #0005- Seth Boyden School Bulldog Log	\$5,769.75	\$5,769.75	Approved
GC.#3	27-5	PCO #006 Truss Repair per ASI#3-SB	\$92,910.42	\$85,518.51	Approved
GC#5	27-10	PCO #013- SB New Fooing Per RFI #019	\$13,937.00	\$6,969.00	APS to sign CO for processing from the Allowance
GC#6	27-7	PCO# 010 4 Electric water heaters Per RFI #090	\$18,075.00	\$9,415.00	APS to sign CO for processing from the Allowance
APS Contracting			\$130,692.17	\$114,770.31	

Allowance Summary	Amount Requested	Amount Approved
APS	\$130,692.17	\$114,770.31
Project Total	\$130,692.17	\$114,770.31

Allowance Status	
Contingency- General Allowance	\$200,000.00
Allowances issued to date	\$114,770.31
Remaining contingency	\$85,229.69

**South Orange Maplewood School District
Seth Boyden and Tuscan Schools**

Date: August 31, 2022

Payment Log

Contract Value: \$ 17,793,000.00

Alternates #3 = \$50,000.00

Alternates #4 = \$65,000.00

Alternates #5 = \$55,000.00

Alternates #6 = \$400,000.00

Total contract value plus alternates = \$18,363,000.00

Invoice No.	Pay Period	Original Contract Amount	Approved Change Orders	Current Approved Contract Value	Current Payment Due
	Jul-21	18,363,000.00	\$ -	NA	NA
	Aug-21	18,363,000.00	\$ -	NA	NA
	Sep-21	18,363,000.00	\$ -	NA	NA
#1	Oct-21	18,363,000.00	\$ -	18,363,000.00	\$ 1,871,702.00
#2	Nov-21	18,363,000.00	\$ -	18,363,000.00	\$ 538,007.75
#3	Dec-21	18,363,000.00	\$ -	18,363,000.00	\$ 489,245.40
#4	Jan-22	18,363,000.00	\$ -	18,363,000.00	\$ 2,104,444.14
#5	Feb-22	18,363,000.00	\$ -	18,363,000.00	\$ 1,674,434.99
#6	Mar-22	18,363,000.00	\$ -	18,363,000.00	\$ 878,986.14
#7	Apr-22	18,363,000.00	\$ -	18,363,000.00	\$ 1,240,867.30
#8	May-22	18,363,000.00		18,363,000.00	\$ 1,656,252.98
#9	Jun-22	18,363,000.00		18,363,000.00	\$ 953,228.82
#10	Jul-22	18,363,000.00		18,363,000.00	\$ 2,297,211.81
Construction Total			\$0		\$ 13,704,381.33

Activity ID	Activity Name	Original Duration	% Complete	Remaining Duration	Start	Finish	Total Float	Q	Q	Q	Q	Q	Q	Q	Q	Q	Q								
								M	J	J	A	S	O	N	D	J	F	M	A	M	J	J	A	S	O

SETH BOYDEN ELEMENTARY SCHOOL

04-Oct-2022, SETH BOYDEN

MILESTONES

04-Oct-2022, MILESTONES

01000.MIL	MILESTONES - NOTICE TO PROCEED	0	100%	0	18-May-2021 A												
01010.MIL	MILESTONES - CONSTRUCTION START	0	100%	0	25-Jun-2021 A												
01015.MIL	MILESTONES - P1 SUBSTANTIAL COMPLETION	0	100%	0		01-Aug-2021 A											
01025.MIL	MILESTONES - P3 SUBSTANTIAL COMPLETION	0	0%	0		19-Aug-2022*	0										
01080.MIL	MILESTONES - SUBSTANTIAL COMPLETION	0	0%	0		31-Aug-2022*	0										
01020.MIL	MILESTONES - P2 SUBSTANTIAL COMPLETION	0	0%	0		31-Aug-2022	0										
01030.MIL	MILESTONES - P4 SUBSTANTIAL COMPLETION	0	0%	0		31-Aug-2022	0										
01090.MIL	MILESTONES - FINAL COMPLETION	0	0%	0		04-Oct-2022	0										

- ◆ MILESTONES - NOTICE TO PROCEED
 - ◆ MILESTONES - CONSTRUCTION START
 - ◆ MILESTONES - P1 SUBSTANTIAL COMPLETION
 - ◆ MILESTONES - P3 SUBSTANTIAL COMPLETION
 - ◆ MILESTONES - SUBSTANTIAL COMPLETION
 - ◆ MILESTONES - P2 SUBSTANTIAL COMPLETION
 - ◆ MILESTONES - P4 SUBSTANTIAL COMPLETION
 - ◆ MILESTONES - FINAL COMPLETION

DELAYS

05-May-2022 A, DELAYS

DEL.001	DELAY OWNER ASBESTOS ABATEMENT - BOILER AREA - P4	25	100%	0	25-Apr-2022 A	05-May-2022 A											
---------	---	----	------	---	---------------	---------------	--	--	--	--	--	--	--	--	--	--	--

DELAY OWNER ASBESTOS ABATEMENT

PROCUREMENT

27-Jul-2022, PROCUREMENT

PREPARE / SUBMIT

18-Mar-2022 A, PREPARE / SUBMIT

12321.A	PREPARE / SUBMIT - CASEWORK SHOP DWGS	45	100%	0	18-Jun-2021 A	18-Jun-2021 A											
08411.A	PREPARE / SUBMIT - ALUM ENTRANCES / STORE FRONTS	40	100%	0	18-Jun-2021 A	18-Jun-2021 A											
26050.A	PREPARE / SUBMIT - ELEC MATERIAL / EQUIP	25	100%	0	18-Jul-2021 A	18-Jul-2021 A											
22400.A	PREPARE / SUBMIT - PLUMB FIXTURES	45	100%	0	19-Jul-2021 A	19-Jul-2021 A											
23700.A	PREPARE / SUBMIT - HVAC EQUIP	25	100%	0	19-Jul-2021 A	19-Jul-2021 A											
22000.A	PREPARE / SUBMIT - PLUMB MATERIALS	25	100%	0	19-Jul-2021 A	19-Jul-2021 A											
05120.A	PREPARE / SUBMIT - STRUCTURAL STEEL SHOP DWGS	20	100%	0	10-Aug-2021 A	10-Aug-2021 A											
05210.A	PREPARE / SUBMIT - STEEL JOIST SHOP DWGS	35	100%	0	16-Aug-2021 A	16-Aug-2021 A											
23050.A	PREPARE / SUBMIT - HVAC MATERIAL	40	100%	0	21-Aug-2021 A	21-Aug-2021 A											
08121.A	PREPARE / SUBMIT - HM DOORS / FRAMES	25	100%	0	21-Sep-2021 A	21-Sep-2021 A											
26511.A	PREPARE / SUBMIT - ELEC LIGHTING FIXTURES	45	100%	0	21-Sep-2021 A	21-Sep-2021 A											
21131.A	PREPARE / SUBMIT - FIRE PROTECTION SHOP DWGS	35	100%	0	22-Sep-2021 A	22-Sep-2021 A											
08141.A	PREPARE / SUBMIT - WOOD DOORS	45	100%	0	27-Oct-2021 A	27-Oct-2021 A											
08710.A	PREPARE / SUBMIT - DOOR HARDWARE	45	100%	0	27-Oct-2021 A	27-Oct-2021 A											
28462.A	PREPARE / SUBMIT - FIRE ALARM MATERIAL / EQUIP	35	100%	0	29-Oct-2021 A	29-Oct-2021 A											
07532.A	PREPARE / SUBMIT - EPDM ROOFING	35	100%	0	01-Nov-2021 A	01-Nov-2021 A											
33421.A	PREPARE / SUBMIT - STORM DRAINAGE	25	100%	0	10-Nov-2021 A	10-Nov-2021 A											
05511.A	PREPARE / SUBMIT - METAL PAN STAIRS SHOP DWGS	30	100%	0	15-Nov-2021 A	15-Nov-2021 A											
05521.A	PREPARE / SUBMIT - METAL RAILINGS	35	100%	0	15-Nov-2021 A	15-Nov-2021 A											
09650.A	PREPARE / SUBMIT - RESILIENT FLOORING	25	100%	0	16-Dec-2021 A	14-Jan-2022 A											

- | PREPARE / SUBMIT - CASEWORK SHOP DWGS
- | PREPARE / SUBMIT - ALUM ENTRANCES / STORE FRONTS
- | PREPARE / SUBMIT - ELEC MATERIAL / EQUIP
- | PREPARE / SUBMIT - PLUMB FIXTURES
- | PREPARE / SUBMIT - HVAC EQUIP
- | PREPARE / SUBMIT - PLUMB MATERIALS
- | PREPARE / SUBMIT - STRUCTURAL STEEL SHOP DWGS
- | PREPARE / SUBMIT - STEEL JOIST SHOP DWGS
- | PREPARE / SUBMIT - HVAC MATERIAL
- | PREPARE / SUBMIT - HM DOORS / FRAMES
- | PREPARE / SUBMIT - ELEC LIGHTING FIXTURES
- | PREPARE / SUBMIT - FIRE PROTECTION SHOP DWGS
- | PREPARE / SUBMIT - WOOD DOORS
- | PREPARE / SUBMIT - DOOR HARDWARE
- | PREPARE / SUBMIT - FIRE ALARM MATERIAL / EQUIP
- | PREPARE / SUBMIT - EPDM ROOFING
- | PREPARE / SUBMIT - STORM DRAINAGE
- | PREPARE / SUBMIT - METAL PAN STAIRS SHOP DWG
- | PREPARE / SUBMIT - METAL RAILINGS
- PREPARE / SUBMIT - RESILIENT FLOORING

Activity ID	Activity Name	Original Duration	% Complete	Lag	Start	Finish	Total Float	Q																							
								M	J	J	A	S	O	N	D	J	F	M	A	M	J	J	A	S	O	N	D	J	F	M	A
33700.SI	INSTALL RELOCATED UTILITY POLE - Site	3	100%	0	05-Dec-2021 A	05-Dec-2021 A		INSTALL RELOCATED UTILITY POLE - Site																							
33701.SI	REMOVE EXIST UTILITY POLE - Site	3	100%	0	05-Dec-2021 A	05-Dec-2021 A		REMOVE EXIST UTILITY POLE - Site																							
PHASE 2								31-Aug-2022, PHASE 2																							
AREA "A" - ADDITION								18-Aug-2022, AREA "A" - ADDITION																							
DEMOLITION								13-Aug-2021 A, DEMOLITION																							
02412.01	PLUMB DEMOLITION - Area "A"	3	100%	0	06-Aug-2021 A	06-Aug-2021 A		PLUMB DEMOLITION - Area "A"																							
02411.01	STRUCTURE DEMOLITION - Area "A"	10	100%	0	10-Aug-2021 A	13-Aug-2021 A		STRUCTURE DEMOLITION - Area "A"																							
STRUCTURE								25-Jul-2022, STRUCTURE																							
BASEMENT								17-Dec-2021 A, BASEMENT																							
31000.01	BUILDING PAD EXCAVATION & FILL - B Flr - Area "A"	5	100%	0	15-Aug-2021 A	20-Aug-2021 A		BUILDING PAD EXCAVATION & FILL - B Flr - Area "A"																							
31010.01	EXCAVATE FOUNDATION - B Flr - Area "A"	5	100%	0	25-Aug-2021 A	27-Aug-2021 A		EXCAVATE FOUNDATION - B Flr - Area "A"																							
03300.01	F/R/P CONC FOUNDATION - B Flr - Area "A"	10	100%	0	10-Nov-2021 A	15-Nov-2021 A		F/R/P CONC FOUNDATION - B Flr - Area "A"																							
03310.01	F/R/P CONC WALLS - B Flr - Area "A"	15	100%	0	15-Nov-2021 A	15-Nov-2021 A		F/R/P CONC WALLS - B Flr - Area "A"																							
26053.01	ELEC U/G ROUGH-IN - B Flr - Area "A"	3	100%	0	25-Nov-2021 A	01-Dec-2021 A		ELEC U/G ROUGH-IN - B Flr - Area "A"																							
22070.01	PLUMB U/G ROUGH-IN - B Flr - Area "A"	5	100%	0	07-Dec-2021 A	10-Dec-2021 A		PLUMB U/G ROUGH-IN - B Flr - Area "A"																							
31020.01	BACKFILL / COMPACT FOUNDATION - B Flr - Area "A"	5	100%	0	10-Dec-2021 A	13-Dec-2021 A		BACKFILL / COMPACT FOUNDATION - B Flr - Area "A"																							
03315.01	F/R/P CONC SLAB & STAIRS - B Flr - Area "A"	5	100%	0	13-Dec-2021 A	17-Dec-2021 A		F/R/P CONC SLAB & STAIRS - B Flr - Area "A"																							
GROUND FLR								25-Jul-2022, GROUND FLR																							
22073.02	PLUMB U/G ROUGH-IN - G Flr - Area "A"	5	100%	0	07-Dec-2021 A	10-Dec-2021 A		PLUMB U/G ROUGH-IN - G Flr - Area "A"																							
26051.02	ELEC U/G ROUGH-IN - G Flr - Area "A"	3	100%	0	07-Dec-2021 A	10-Dec-2021 A		ELEC U/G ROUGH-IN - G Flr - Area "A"																							
03321.02	FINEGRADE / PREP S.O.G. - G Flr - Area "A"	8	100%	0	10-Dec-2021 A	15-Dec-2021 A		FINEGRADE / PREP S.O.G. - G Flr - Area "A"																							
03330.02	INSPECT & POUR S.O.G. - G Flr - Area "A"	2	100%	0	12-Dec-2021 A	17-Dec-2021 A		INSPECT & POUR S.O.G. - G Flr - Area "A"																							
05121.02	STEEL BEAMS @ STAIRS - G Flr - Area "A"	3	100%	0	15-Dec-2021 A	21-Dec-2021 A		STEEL BEAMS @ STAIRS - G Flr - Area "A"																							
05311.02	METAL DECKING @ STAIRS - G Flr - Area "A"	9	100%	0	20-Dec-2021 A	20-May-2022 A		METAL DECKING @ STAIRS - G Flr - Area "A"																							
05122.02	STEEL COLUMNS - G Flr - Area "A"	9	100%	0	20-Dec-2021 A	31-Dec-2021 A		STEEL COLUMNS - G Flr - Area "A"																							
04221.02	CMU EXTERIOR WALLS - G Flr - Area "A"	10	100%	0	14-Jan-2022 A	01-Feb-2022 A		CMU EXTERIOR WALLS - G Flr - Area "A"																							
04222.02	CMU INTERIOR WALLS - G Flr - Area "A"	5	100%	0	25-Jan-2022 A	15-Apr-2022 A		CMU INTERIOR WALLS - G Flr - Area "A"																							
03310.02	F/R/P CONC BOND BEAMS - G Flr - Area "A"	5	100%	0	01-Feb-2022 A	15-Apr-2022 A		F/R/P CONC BOND BEAMS - G Flr - Area "A"																							
05511.02	STEEL STAIRS & LANDING - G Flr - Area "A"	5	100%	0	01-May-2022 A	20-May-2022 A		STEEL STAIRS & LANDING - G Flr - Area "A"																							
03316.02	POUR STAIR TREADS / LANDINGS - G Flr - Area "A"	3	0%	3	21-Jul-2022	25-Jul-2022	4	POUR STAIR TREADS / LANDINGS																							
1ST FLOOR								25-Jul-2022, 1ST FLOOR																							
22070.03	PLUMB U/S ROUGH-IN - 1st Flr - Area "A"	5	100%	0	05-Dec-2021 A	10-Dec-2021 A		PLUMB U/S ROUGH-IN - 1st Flr - Area "A"																							
26053.03	ELECT - U/S ROUGH-IN - 1st Flr - Area "A"	3	100%	0	05-Dec-2021 A	10-Dec-2021 A		ELECT - U/S ROUGH-IN - 1st Flr - Area "A"																							
05121.03	STEEL BEAMS - 1st Flr - Area "A"	10	100%	0	20-Dec-2021 A	31-Dec-2021 A		STEEL BEAMS - 1st Flr - Area "A"																							
05122.03	STEEL COLUMNS - 1st Flr - Area "A"	5	100%	0	21-Dec-2021 A	31-Dec-2021 A		STEEL COLUMNS - 1st Flr - Area "A"																							

█ Actual Work
 █ Critical Remaining Work
 ▾ Summary
█ Remaining Work
 ◆ Milestone

SETH BOYDEN ELEMENTARY SCHOOL - SBES-UPD5		APS CONTRACTING, INC.						Data Date 21-Jul-2022																
Activity ID	Activity Name	Original Duration	Duration % Complete	Remaining Duration	Start	Finish	Total Float	Q Q Q Q Q Q Q Q Q Q																
								M	J	J	A	S	O	N	D	J	F	M	A	M	J	J	A	S
05522.SI	RAILINGS - Site - P2	5	0%	5	18-Aug-2022	24-Aug-2022	4																	
COMPLETION - P2								<ul style="list-style-type: none"> RAILINGS - Site - P2 31-Aug-2022, COMPLETION - P2 																
01728.CPL	FINAL CLEAN - Area "A" - P2	10	0%	10	18-Aug-2022	31-Aug-2022	0																	
01738.CPL	FINAL INSPECTIONS - Area "A" - P2	5	0%	5	25-Aug-2022	31-Aug-2022	0																	
PHASE 3								<ul style="list-style-type: none"> FINAL CLEAN - Area "A" - P2 FINAL INSPECTIONS - Area "A" - P2 19-Aug-2022, PHASE 3 19-Aug-2022, MODULAR CLASSROOMS 																
MODULAR CLASSROOMS																								
31251.P3	EROSION & SEDIMENT CONTROL - MC - P3	3	0%	3	21-Jul-2022	25-Jul-2022	0																	
02411.P3	ELEC SAFE OFF / DEMO - MC - P3	5	0%	5	22-Jul-2022	28-Jul-2022	0																	
02412.P3	PLUMB DISCONNECT / DEMO - MC - P3	5	0%	5	25-Jul-2022	29-Jul-2022	0																	
02413.P3	HVAC DISCONNECT / DEMO - MC - P3	5	0%	5	27-Jul-2022	02-Aug-2022	0																	
02415.P3	MODULAR DEMO / REMOVAL - MC - P3	10	0%	10	03-Aug-2022	16-Aug-2022	0																	
01740.P3	FINAL CLEAN - MC - P3	3	0%	3	17-Aug-2022	19-Aug-2022	0																	
01745.P3	FINAL INSPECTIONS - MC - P3	3	0%	3	17-Aug-2022	19-Aug-2022	0																	
PHASE 4								<ul style="list-style-type: none"> EROSION & SEDIMENT CONTROL - MC - P3 ELEC SAFE OFF / DEMO - MC - P3 PLUMB DISCONNECT / DEMO - MC - P3 HVAC DISCONNECT / DEMO - MC - P3 MODULAR DEMO / REMOVAL - MC - P3 FINAL CLEAN - MC - P3 FINAL INSPECTIONS - MC - P3 31-Aug-2022, PHASE 4 31-Aug-2022, BOILER ROOM - AREA "B" 24-May-2022 A, DEMOLITION 																
BOILER ROOM - AREA "B"																								
DEMOLITION																								
02416.01	PLUMB HWH DEMOLITION - Boiler - Area "B"	5	100%	0	25-Apr-2022 A	24-May-2022 A																		
02419.01	ELEC DISCONNECT / DEMOLITION - Boiler - Area "B"	5	100%	0	25-Apr-2022 A	24-May-2022 A																		
02420.01	PLUMB DISCONNECT / CAP - Boiler - Area "B"	3	100%	0	25-Apr-2022 A	24-May-2022 A																		
02421.01	HVAC PIPING & BREECHING DEMOLITION - Boiler - Area "B"	5	100%	0	25-Apr-2022 A	24-May-2022 A																		
02422.01	HVAC BOILER & PUMPS DEMOLITION - Boiler - Area "B"	5	100%	0	25-Apr-2022 A	24-May-2022 A																		
02423.01	HVAC DUCTWORK / LOUVER DEMOLITION - Boiler - Area "B"	5	100%	0	25-Apr-2022 A	24-May-2022 A																		
02200.01	OWNER ASBESTOS ABATEMENT - Boiler - Area "B"	25	100%	0	25-Apr-2022 A	05-May-2022 A																		
ROUGH-IN								<ul style="list-style-type: none"> PLUMB HWH DEMOLITION - Boiler - Area "B" ELEC DISCONNECT / DEMOLITION - Boiler - Area "B" PLUMB DISCONNECT / CAP - Boiler - Area "B" HVAC PIPING & BREECHING DEMOLITION - Boiler - Area "B" HVAC BOILER & PUMPS DEMOLITION - Boiler - Area "B" HVAC DUCTWORK / LOUVER DEMOLITION - Boiler - Area "B" OWNER ASBESTOS ABATEMENT - Boiler - Area "B" 10-Aug-2022, ROUGH-IN 																
23521.01	HVAC SET BOILERS - Boiler - Area "B"	4	50%	2	13-Jun-2022 A	22-Jul-2022	0																	
26051.01	ELEC ROUGH-IN - Boiler - Area "B"	10	50%	5	13-Jun-2022 A	27-Jul-2022	4																	
26241.01	ELEC PANEL - Boiler - Area "B"	5	50%	3	13-Jun-2022 A	25-Jul-2022	4																	
03302.01	F/R/P CONC MECH PADS - Boiler - Area "B"	5	100%	0	15-Jun-2022 A	17-Jun-2022 A																		
28460.01	FIRE ALARM EQUIP / ROUGH-IN - Boiler - Area "B"	5	0%	5	21-Jul-2022	27-Jul-2022	7																	
23054.01	HVAC CONTROL PANELS & SHUT DOWN - Boiler - Area "B"	5	0%	5	21-Jul-2022	27-Jul-2022	6																	
23823.01	HVAC INSTALL UNIT HEATER - Boiler - Area "B"	3	0%	3	21-Jul-2022	25-Jul-2022	4																	
22110.01	PLUMB GAS PIPING / EQUIP - Boiler - Area "B"	5	0%	5	25-Jul-2022	29-Jul-2022	2																	
23212.01	HVAC PUMPS - Boiler - Area "B"	3	0%	3	25-Jul-2022	27-Jul-2022	0																	
23210.01	HVAC PIPING / VALVES - Boiler - Area "B"	10	0%	10	25-Jul-2022	05-Aug-2022	0																	

█ Actual Work
 █ Critical Remaining Work
 ▼ Summary
█ Remaining Work
 ◆ Milestone

Activity ID	Activity Name	Original Duration	Duration % Complete	Remaining Duration	Start	Finish	Total Float	Q																					
								M	J	J	A	S	O	N	D	J	F	M	A	M	J	J	A	S	O	N	D	J	F
ROOF								▼ 03-Aug-2022, ROOF																					
07255.05	UNDERLAYMENT - RF - Area "B"	2	15%	2	18-Jul-2022 A	22-Jul-2022	19	I UNDERLAYMENT - RF - Area "B"																					
07314.05	SLATE SHINGLES - RF - Area "B"	5	15%	4	18-Jul-2022 A	27-Jul-2022	19	O SLATE SHINGLES - RF - Area "B"																					
07311.05	SHINGLES - RF - Area "B"	5	15%	4	18-Jul-2022 A	27-Jul-2022	19	O SHINGLES - RF - Area "B"																					
06150.05	PVC TRIM - RF - Area "B"	2	0%	2	27-Jul-2022	29-Jul-2022	19	I PVC TRIM - RF - Area "B"																					
01725.05	FINAL CLEAN - RF - Area "B"	1	0%	1	29-Jul-2022	01-Aug-2022	20	I FINAL CLEAN - RF - Area "B"																					
01730.05	FINAL INSPECTIONS - RF - Area "B"	2	0%	2	01-Aug-2022	03-Aug-2022	20	I FINAL INSPECTIONS - RF - Area "B"																					
AREA "C"								▼ 05-Aug-2022, AREA "C"																					
DEMOLITION								▼ 26-Jul-2022, DEMOLITION																					
GROUND FLR								▼ 20-Jul-2022 A, GROUND FLR																					
02418.02	SELECTIVE DEMOLITION - G Flr - Area "C"	5	100%	0	27-Jun-2022 A	20-Jul-2022 A		■ SELECTIVE DEMOLITION - G Flr - Area "C"																					
02420.02	PLUMB DEMOLITION - G Flr - Area "C"	5	100%	0	27-Jun-2022 A	20-Jul-2022 A		■ PLUMB DEMOLITION - G Flr - Area "C"																					
02421.02	HVAC DEMOLITION - G Flr - Area "C"	5	100%	0	27-Jun-2022 A	20-Jul-2022 A		■ HVAC DEMOLITION - G Flr - Area "C"																					
02419.02	ELEC DISCONNECT / DEMOLITION - G Flr - Area "C"	5	100%	0	27-Jun-2022 A	20-Jul-2022 A		■ ELEC DISCONNECT / DEMOLITION - G Flr - Area "C"																					
1ST FLOOR								▼ 20-Jul-2022 A, 1ST FLOOR																					
02412.03	SELECTIVE DEMOLITION - 1st Flr - Area "C"	5	100%	0	27-Jun-2022 A	20-Jul-2022 A		■ SELECTIVE DEMOLITION - 1st Flr - Area "C"																					
02419.03	HVAC DEMOLITION - 1st Flr - Area "C"	5	100%	0	27-Jun-2022 A	20-Jul-2022 A		■ HVAC DEMOLITION - 1st Flr - Area "C"																					
02418.03	ELEC DISCONNECT / DEMOLITION - 1st Flr - Area "C"	5	100%	0	27-Jun-2022 A	20-Jul-2022 A		■ ELEC DISCONNECT / DEMOLITION - 1st Flr - Area "C"																					
2ND FLR								▼ 20-Jul-2022 A, 2ND FLR																					
02421.04	HVAC DEMOLITION - 2nd Flr - Area "C"	5	100%	0	27-Jun-2022 A	20-Jul-2022 A		■ HVAC DEMOLITION - 2nd Flr - Area "C"																					
02420.04	ELEC DISCONNECT / DEMOLITION - 2nd Flr - Area "C"	5	100%	0	27-Jun-2022 A	20-Jul-2022 A		■ ELEC DISCONNECT / DEMOLITION - 2nd Flr - Area "C"																					
02418.04	SELECTIVE DEMOLITION - 2nd Flr - Area "C"	5	100%	0	27-Jun-2022 A	20-Jul-2022 A		■ SELECTIVE DEMOLITION - 2nd Flr - Area "C"																					
ROOF								▼ 26-Jul-2022, ROOF																					
02417.05	ROOFING DEMOLITION - RF - Area "C"	5	25%	4	18-Jul-2022 A	26-Jul-2022	20	O ROOFING DEMOLITION - RF - Area "C"																					
ROUGH-IN								▼ 29-Jul-2022, ROUGH-IN																					
GROUND FLR								▼ 28-Jul-2022, GROUND FLR																					
26055.02	ELEC ROUGH-IN - G Flr - Area "C"	3	50%	2	27-Jun-2022 A	22-Jul-2022	22	■ ELEC ROUGH-IN - G Flr - Area "C"																					
28465.02	FIRE ALARM ROUGH-IN - G Flr - Area "C"	5	50%	3	27-Jun-2022 A	25-Jul-2022	22	■ FIRE ALARM ROUGH-IN - G Flr - Area "C"																					
26275.02	ELEC WIRING EQUIP - G Flr - Area "C"	2	25%	2	27-Jun-2022 A	22-Jul-2022	23	■ ELEC WIRING EQUIP - G Flr - Area "C"																					
23065.02	HVAC DUCT ROUGH-IN - G Flr - Area "C"	3	25%	2	27-Jun-2022 A	25-Jul-2022	20	■ HVAC DUCT ROUGH-IN - G Flr - Area "C"																					
23215.02	HVAC PIPING - G Flr - Area "C"	3	50%	2	27-Jun-2022 A	22-Jul-2022	23	■ HVAC PIPING - G Flr - Area "C"																					
23705.02	HVAC EQUIP - G Flr - Area "C"	3	0%	3	21-Jul-2022	25-Jul-2022	21	O HVAC EQUIP - G Flr - Area "C"																					
01702.02	INSPECT ROUGH-IN - G Flr - Area "C"	3	0%	3	26-Jul-2022	28-Jul-2022	21	I INSPECT ROUGH-IN - G Flr - Area "C"																					
1ST FLOOR								▼ 29-Jul-2022, 1ST FLOOR																					
26059.03	ELEC ROUGH-IN - 1st Flr - Area "C"	3	50%	2	27-Jun-2022 A	22-Jul-2022	23	■ ELEC ROUGH-IN - 1st Flr - Area "C"																					

■ Actual Work
 ■ Critical Remaining Work
 ▼ Summary
■ Remaining Work
 ◆ Milestone

Activity ID	Activity Name	Original Duration	Duration % Complete	Remaining Duration	Start	Finish	Total Float	Q	Q	Q	Q	Q	Q	Q	Q	Q	Q									
								M	J	J	A	S	O	N	D	J	F	M	A	M	J	J	A	S	O	N

TUSCAN ELEMENTARY SCHOOL

MILESTONES

01000.MIL	MILESTONES - NOTICE TO PROCEED	0	100%	0	18-May-2021 A																			
01010.MIL	MILESTONES - CONSTRUCTION START	0	100%	0	25-Jun-2021 A																			
01015.MIL	MILESTONES - P1 SUBSTANTIAL COMPLETION	0	100%	0		01-Aug-2021 A																		
01025.MIL	MILESTONES - P3 SUBSTANTIAL COMPLETION	0	0%	0		23-Aug-2022*	-16																	
01030.MIL	MILESTONES - P4 SUBSTANTIAL COMPLETION	0	0%	0		20-Sep-2022	-14																	
01080.MIL	MILESTONES - SUBSTANTIAL COMPLETION	0	0%	0		21-Sep-2022*	-15																	
01020.MIL	MILESTONES - P2 SUBSTANTIAL COMPLETION	0	0%	0		21-Sep-2022*	-26																	
01090.MIL	MILESTONES - FINAL COMPLETION	0	0%	0		25-Oct-2022*	-15																	

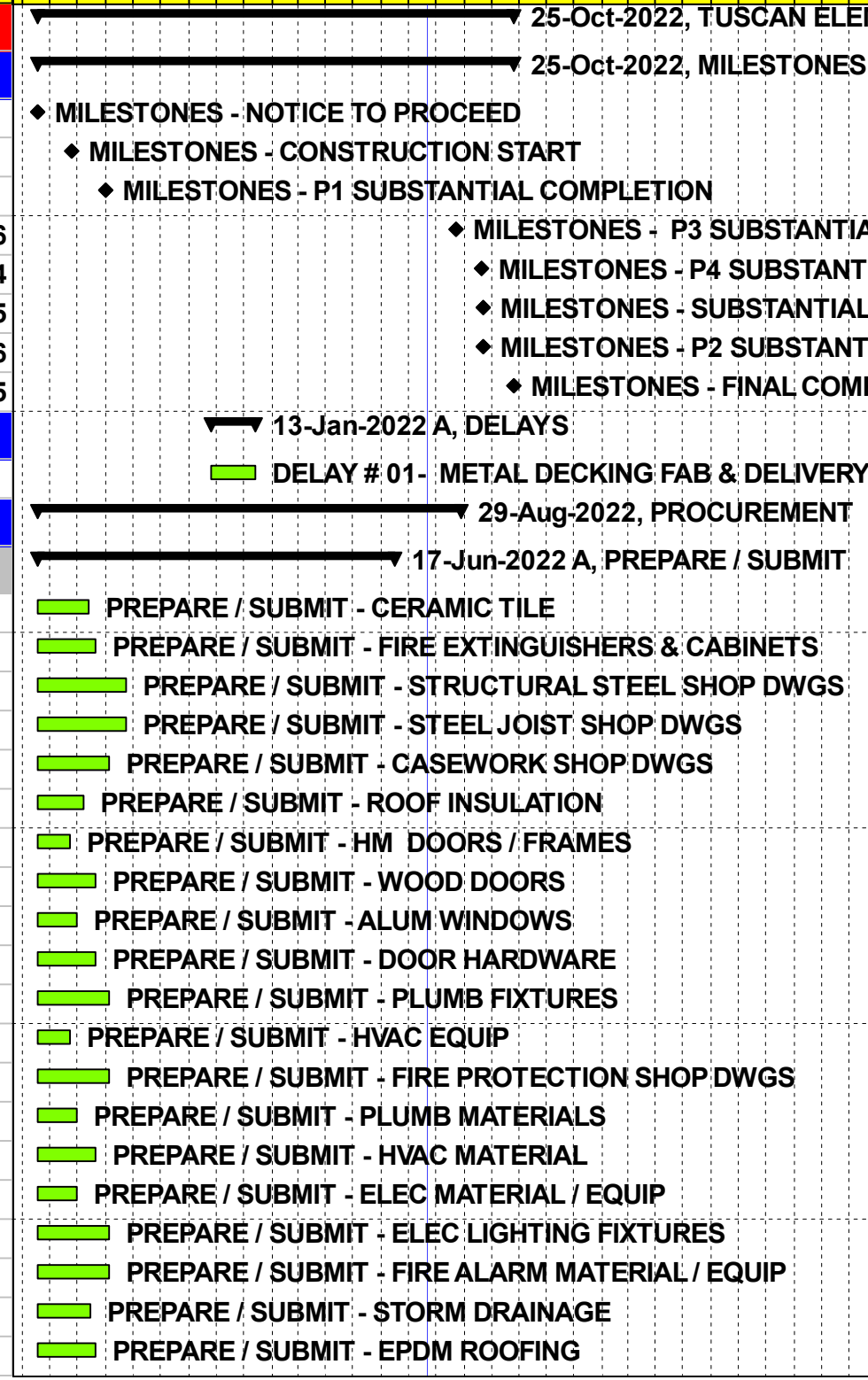
DELAYS

DEL.001	DELAY # 01- METAL DECKING FAB & DELIVERY	33	100%	0	25-Nov-2021 A	13-Jan-2022 A																		
---------	--	----	------	---	---------------	---------------	--	--	--	--	--	--	--	--	--	--	--	--	--	--	--	--	--	--

PROCUREMENT

PREPARE / SUBMIT

09300.A	PREPARE / SUBMIT - CERAMIC TILE	40	100%	0	18-May-2021 A	14-Jul-2021 A																		
10441.A	PREPARE / SUBMIT - FIRE EXTINGUISHERS & CABINETS	45	100%	0	18-May-2021 A	21-Jul-2021 A																		
05120.A	PREPARE / SUBMIT - STRUCTURAL STEEL SHOP DWGS	35	100%	0	18-May-2021 A	23-Aug-2021 A																		
05210.A	PREPARE / SUBMIT - STEEL JOIST SHOP DWGS	40	100%	0	18-May-2021 A	23-Aug-2021 A																		
12321.A	PREPARE / SUBMIT - CASEWORK SHOP DWGS	55	100%	0	18-May-2021 A	04-Aug-2021 A																		
07220.A	PREPARE / SUBMIT - ROOF INSULATION	35	100%	0	18-May-2021 A	07-Jul-2021 A																		
08121.A	PREPARE / SUBMIT - HM DOORS / FRAMES	25	100%	0	18-May-2021 A	22-Jun-2021 A																		
08141.A	PREPARE / SUBMIT - WOOD DOORS	45	100%	0	18-May-2021 A	21-Jul-2021 A																		
08511.A	PREPARE / SUBMIT - ALUM WINDOWS	30	100%	0	18-May-2021 A	29-Jun-2021 A																		
08710.A	PREPARE / SUBMIT - DOOR HARDWARE	45	100%	0	18-May-2021 A	21-Jul-2021 A																		
22400.A	PREPARE / SUBMIT - PLUMB FIXTURES	55	100%	0	18-May-2021 A	04-Aug-2021 A																		
23700.A	PREPARE / SUBMIT - HVAC EQUIP	25	100%	0	18-May-2021 A	22-Jun-2021 A																		
21131.A	PREPARE / SUBMIT - FIRE PROTECTION SHOP DWGS	55	100%	0	18-May-2021 A	04-Aug-2021 A																		
22000.A	PREPARE / SUBMIT - PLUMB MATERIALS	30	100%	0	18-May-2021 A	29-Jun-2021 A																		
23050.A	PREPARE / SUBMIT - HVAC MATERIAL	45	100%	0	18-May-2021 A	21-Jul-2021 A																		
26050.A	PREPARE / SUBMIT - ELEC MATERIAL / EQUIP	30	100%	0	18-May-2021 A	29-Jun-2021 A																		
26511.A	PREPARE / SUBMIT - ELEC LIGHTING FIXTURES	55	100%	0	18-May-2021 A	04-Aug-2021 A																		
28462.A	PREPARE / SUBMIT - FIRE ALARM MATERIAL / EQUIP	55	100%	0	18-May-2021 A	04-Aug-2021 A																		
33421.A	PREPARE / SUBMIT - STORM DRAINAGE	40	100%	0	18-May-2021 A	14-Jul-2021 A																		
07532.A	PREPARE / SUBMIT - EPDM ROOFING	45	100%	0	18-May-2021 A	21-Jul-2021 A																		



Activity ID	Activity Name	Original Duration	Duration % Complete	Remaining Duration	Start	Finish	Total Float	Gantt Chart																														
								Q	Q	Q	Q	Q	Q	Q	Q	Q	Q	Q	Q																			
								M	J	J	A	S	O	N	D	J	F	M	A	M	J	J	A	S	O	N	D	J	F	M	A	M	J	J	A	S	O	N
05310.A	PREPARE / SUBMIT - METAL DECKING	35	100%	0	18-May-2021 A	07-Jul-2021 A		■ PREPARE / SUBMIT - METAL DECKING																														
04200.A	PREPARE / SUBMIT - CMU	45	100%	0	18-May-2021 A	21-Jul-2021 A		■ PREPARE / SUBMIT - CMU																														
04720.A	PREPARE / SUBMIT - CAST STONE MASONRY	45	100%	0	18-May-2021 A	21-Jul-2021 A		■ PREPARE / SUBMIT - CAST STONE MASONRY																														
07250.A	PREPARE / SUBMIT - WEATHER BARRIERS	40	100%	0	18-May-2021 A	14-Jul-2021 A		■ PREPARE / SUBMIT - WEATHER BARRIERS																														
07211.A	PREPARE / SUBMIT - THERMAL RIGID INSULATION	40	100%	0	18-May-2021 A	14-Jul-2021 A		■ PREPARE / SUBMIT - THERMAL RIGID INSULATION																														
07311.A	PREPARE / SUBMIT - ASPHALT SHINGLES	40	100%	0	18-May-2021 A	14-Jul-2021 A		■ PREPARE / SUBMIT - ASPHALT SHINGLES																														
07314.A	PREPARE / SUBMIT - SLATE SHINGLES	40	100%	0	18-May-2021 A	14-Jul-2021 A		■ PREPARE / SUBMIT - SLATE SHINGLES																														
07421.A	PREPARE / SUBMIT - METAL WALL PANELS	30	100%	0	18-May-2021 A	29-Jun-2021 A		■ PREPARE / SUBMIT - METAL WALL PANELS																														
07620.A	PREPARE / SUBMIT - SHEET METAL FLASHING & TRIM	45	100%	0	18-May-2021 A	21-Jul-2021 A		■ PREPARE / SUBMIT - SHEET METAL FLASHING & TRIM																														
07720.A	PREPARE / SUBMIT - ROOF ACCESORIES	35	100%	0	18-May-2021 A	07-Jul-2021 A		■ PREPARE / SUBMIT - ROOF ACCESORIES																														
08161.A	PREPARE / SUBMIT - FRP DOORS	45	100%	0	18-May-2021 A	21-Jul-2021 A		■ PREPARE / SUBMIT - FRP DOORS																														
08512.A	PREPARE / SUBMIT - ALUM CURTAIN WALLS	30	100%	0	18-May-2021 A	29-Jun-2021 A		■ PREPARE / SUBMIT - ALUM CURTAIN WALLS																														
08800.A	PREPARE / SUBMIT - GLAZING	30	100%	0	18-May-2021 A	29-Jun-2021 A		■ PREPARE / SUBMIT - GLAZING																														
09211.A	PREPARE / SUBMIT - GYPSUM BOARD	35	100%	0	18-May-2021 A	07-Jul-2021 A		■ PREPARE / SUBMIT - GYPSUM BOARD																														
12366.A	PREPARE / SUBMIT - COUNTERTOPS	40	100%	0	18-May-2021 A	14-Jul-2021 A		■ PREPARE / SUBMIT - COUNTERTOPS																														
26241.A	PREPARE / SUBMIT - ELEC PANELS	30	100%	0	18-May-2021 A	29-Jun-2021 A		■ PREPARE / SUBMIT - ELEC PANELS																														
09650.A	PREPARE / SUBMIT - RESILIENT FLOORING	30	100%	0	05-Jan-2022 A	15-Jan-2022 A		■ PREPARE / SUBMIT - RESILIENT FLOORING																														
09012.A	PREPARE / SUBMIT - PLASTER MATERIALS	45	100%	0	18-Mar-2022 A	18-May-2022 A		■ PREPARE / SUBMIT - PLASTER MATERIALS																														
09910.A	PREPARE / SUBMIT - PAINT	45	100%	0	28-Mar-2022 A	28-Mar-2022 A		■ PREPARE / SUBMIT - PAINT																														
10280.A	PREPARE / SUBMIT - TOILET ACCESSORIES	5	100%	0	17-May-2022 A	17-May-2022 A		■ PREPARE / SUBMIT - TOILET ACCESSORIES																														
10110.A	PREPARE / SUBMIT - VISUAL DISPLAY UNITS	5	100%	0	13-Jun-2022 A	13-Jun-2022 A		■ PREPARE / SUBMIT - VISUAL DISPLAY UNITS																														
10145.A	PREPARE / SUBMIT - SIGNAGE	5	100%	0	17-Jun-2022 A	17-Jun-2022 A		■ PREPARE / SUBMIT - SIGNAGE																														
REVIEW / APPROVE SUBMITTALS								▶ 25-Jul-2022, REVIEW / APPROVE SUBMITTALS																														
22000.B	REVIEW / APPROVE - PLUMB MATERIALS	21	100%	0	10-Jun-2021 A	01-Jul-2021 A		■ REVIEW / APPROVE - PLUMB MATERIALS																														
08121.B	REVIEW / APPROVE - HM DOORS / FRAMES	21	100%	0	18-Jun-2021 A	21-Sep-2021 A		■ REVIEW / APPROVE - HM DOORS / FRAMES																														
23700.B	REVIEW / APPROVE - HVAC EQUIP	21	100%	0	30-Jun-2021 A	20-Jul-2021 A		■ REVIEW / APPROVE - HVAC EQUIP																														
08511.B	REVIEW / APPROVE - ALUM WINDOWS	21	100%	0	30-Jun-2021 A	20-Jul-2021 A		■ REVIEW / APPROVE - ALUM WINDOWS																														
26050.B	REVIEW / APPROVE - ELEC MATERIAL / EQUIP	21	100%	0	30-Jun-2021 A	20-Jul-2021 A		■ REVIEW / APPROVE - ELEC MATERIAL / EQUIP																														
08512.B	REVIEW / APPROVE - ALUM CURTAIN WALLS	21	100%	0	30-Jun-2021 A	20-Jul-2021 A		■ REVIEW / APPROVE - ALUM CURTAIN WALLS																														
26241.B	REVIEW / APPROVE - ELEC PANELS	21	100%	0	30-Jun-2021 A	20-Jul-2021 A		■ REVIEW / APPROVE - ELEC PANELS																														
07220.B	REVIEW / APPROVE - ROOF INSULATION	21	100%	0	08-Jul-2021 A	28-Jul-2021 A		■ REVIEW / APPROVE - ROOF INSULATION																														
09300.B	REVIEW / APPROVE - CERAMIC TILE	21	100%	0	15-Jul-2021 A	04-Aug-2021 A		■ REVIEW / APPROVE - CERAMIC TILE																														
07250.B	REVIEW / APPROVE - WEATHER BARRIERS	21	100%	0	15-Jul-2021 A	04-Aug-2021 A		■ REVIEW / APPROVE - WEATHER BARRIERS																														
07211.B	REVIEW / APPROVE - THERMAL RIGID INSULATION	21	100%	0	15-Jul-2021 A	04-Aug-2021 A		■ REVIEW / APPROVE - THERMAL RIGID INSULATION																														
07311.B	REVIEW / APPROVE - ASPHALT SHINGLES	21	100%	0	15-Jul-2021 A	04-Aug-2021 A		■ REVIEW / APPROVE - ASPHALT SHINGLES																														

Activity ID	Activity Name	Original Duration	Duration % Complete	Remaining Duration	Start	Finish	Total Float	Q																						
								M	J	J	A	S	O	N	D	J	F	M	A	M	J	J	A	S	O	N	D	J	F	M

CLASSROOMS

07220.02	INSULATION & COVER BOARD - RF - Area "C"	5	100%	0	10-Apr-2022 A	15-Apr-2022 A	
06100.02	ROUGH CARPENTRY / BLOCKING - RF - Area "C"	5	100%	0	18-Apr-2022 A	22-Apr-2022 A	
07315.02	SLATE SHINGLES - RF - Area "C"	20	100%	0	15-Jun-2022 A	15-Jul-2022 A	

15-Jul-2022 A, CLASSROOMS

- INSULATION & COVER BOARD - RF - Area "C"
- ROUGH CARPENTRY / BLOCKING - RF - Area "C"
- SLATE SHINGLES - RF - Area "C"

ROUGH-IN

26052.01	ELEC WALL ROUGH-IN - Area "C"	10	100%	0	15-Feb-2022 A	05-Apr-2022 A	
26054.01	ELEC OH ROUGH-IN - Area "C"	10	100%	0	15-Feb-2022 A	05-Apr-2022 A	
26241.01	ELEC PANELS - Area "C"	10	100%	0	15-Feb-2022 A	05-Apr-2022 A	
06102.01	ROUGH CARPENTRY / BLOCKING - Area "C"	5	100%	0	08-Mar-2022 A	14-Mar-2022 A	
26060.01	ELEC WIRING - Area "C"	10	100%	0	14-Mar-2022 A	25-Mar-2022 A	
28462.01	FIRE ALARM ROUGH-IN - Area "C"	10	100%	0	14-Mar-2022 A	05-Apr-2022 A	
08123.02	HM DOOR FRAME - Area "C"	5	100%	0	15-Mar-2022 A	22-Mar-2022 A	
28160.01	ACCESS & SECURITY ROUGH-IN - Area "C"	5	100%	0	21-Mar-2022 A	22-Mar-2022 A	
22071.01	PLUMB WALL ROUGH-IN - Area "C"	10	100%	0	22-Mar-2022 A	20-May-2022 A	
26273.01	ELEC WIRING EQUIP - Area "C"	5	100%	0	25-Mar-2022 A	28-Apr-2022 A	
23052.01	HVAC MAIN DUCT ROUGH-IN - Area "C"	10	100%	0	15-Apr-2022 A	25-Apr-2022 A	
23053.01	HVAC BRANCH DUCT ROUGH-IN - Area "C"	5	100%	0	20-Apr-2022 A	25-Apr-2022 A	
22073.01	PLUMB OH ROUGH - Area "C"	10	100%	0	25-Apr-2022 A	05-May-2022 A	
23230.01	HVAC PIPING - Area "C"	10	100%	0	25-Apr-2022 A	01-May-2022 A	
01710.01	INSPECT ROUGH-IN - Area "C"	3	100%	0	05-May-2022 A	05-May-2022 A	
23055.01	HVAC DUCT INSULATION - Area "C"	5	100%	0	05-May-2022 A	10-May-2022 A	
09223.01	FRAME DRYWALL CEILINGS / SOFFITS - Area "C"	10	100%	0	05-May-2022 A	15-May-2022 A	
23701.01	HVAC EQUIP - Area "C"	10	0%	10	25-Jul-2022	05-Aug-2022	-17

05-Aug-2022, ROUGH-IN

- ELEC WALL ROUGH-IN - Area "C"
- ELEC OH ROUGH-IN - Area "C"
- ELEC PANELS - Area "C"
- ROUGH CARPENTRY / BLOCKING - Area "C"
- ELEC WIRING - Area "C"
- FIRE ALARM ROUGH-IN - Area "C"
- HM DOOR FRAME - Area "C"
- ACCESS & SECURITY ROUGH-IN - Area "C"
- PLUMB WALL ROUGH-IN - Area "C"
- ELEC WIRING EQUIP - Area "C"
- HVAC MAIN DUCT ROUGH-IN - Area "C"
- HVAC BRANCH DUCT ROUGH-IN - Area "C"
- PLUMB OH ROUGH - Area "C"
- HVAC PIPING - Area "C"
- INSPECT ROUGH-IN - Area "C"
- HVAC DUCT INSULATION - Area "C"
- FRAME DRYWALL CEILINGS / SOFFITS
- HVAC EQUIP - Area "C"

FINISHES

01720.02	INSPECT - MEP CEILING - Area "C"	3	100%	0	05-May-2022 A	05-May-2022 A	
09290.02	HANG & FINISH GYPSUM BOARD - Area "C"	15	100%	0	05-May-2022 A	15-May-2022 A	
27130.02	COMM PULL CABLE - Area "C"	5	100%	0	23-May-2022 A	06-Jun-2022 A	
09912.02	PAINT PRIME COAT - Area "C"	5	100%	0	23-May-2022 A	06-Jun-2022 A	
09511.02	ACOUSTICAL CLG GRID - Area "C"	10	100%	0	30-May-2022 A	03-Jun-2022 A	
26511.02	ELEC LIGHTING FIXTURES - Area "C"	10	100%	0	03-Jun-2022 A	10-Jun-2022 A	
09913.02	PAINT FINISH COAT - Area "C"	5	100%	0	06-Jun-2022 A	17-Jun-2022 A	
09300.02	CERAMIC TILE - Area "C"	10	100%	0	20-Jun-2022 A	20-Jul-2022 A	
26150.02	ELEC DEVICE / TRIM - Area "C"	5	100%	0	20-Jun-2022 A	01-Jul-2022 A	
27131.02	COMM DEVICE / TRIM - Area "C"	5	100%	0	20-Jun-2022 A	01-Jul-2022 A	
28110.02	ACCESS & SECURITY DEVICE / TRIM - Area "C"	5	100%	0	20-Jun-2022 A	01-Jul-2022 A	

25-Aug-2022, FINISHES

- INSPECT - MEP CEILING - Area "C"
- HANG & FINISH GYPSUM BOARD - Area "C"
- COMM PULL CABLE - Area "C"
- PAINT PRIME COAT - Area "C"
- ACOUSTICAL CLG GRID - Area "C"
- ELEC LIGHTING FIXTURES - Area "C"
- PAINT FINISH COAT - Area "C"
- CERAMIC TILE - Area "C"
- ELEC DEVICE / TRIM - Area "C"
- COMM DEVICE / TRIM - Area "C"
- ACCESS & SECURITY DEVICE / TRIM - Area "C"

■ Actual Work
 ■ Critical Remaining Work
 ▼ Summary
■ Remaining Work
 ◆ Milestone

Activity ID	Activity Name	Original Duration	Duration % Complete	Remaining Duration	Start	Finish	Total Float	Q															
								M	J	J	A	S	O	N	D	J	F	M	A	M	J	J	A
28312.02	INSTALL F/A DEVICE / TRIM - Area "C"	5	100%	0	20-Jun-2022 A	01-Jul-2022 A																	
23050.02	HVAC GRILLES / TRIM - Area "C"	10	100%	0	10-Jul-2022 A	13-Jul-2022 A																	
08710.02	INSTALL HARDWARE - Area "C"	5	0%	5	25-Jul-2022	29-Jul-2022	1																
10441.02	FIRE EXTINGUISHER CABINETS - Area "C"	2	0%	2	25-Jul-2022	26-Jul-2022	-11																
23090.02	HVAC CONTROLS / TRIM - Area "C"	5	0%	5	25-Jul-2022	29-Jul-2022	-17																
23058.02	HVAC EQUIP START-UP - Area "C"	5	0%	5	01-Aug-2022	08-Aug-2022	-17																
09500.02	INSTALL CLG SOUND PANELS - Area "C"	3	0%	3	02-Aug-2022	05-Aug-2022	-17																
06411.02	MILLWORK - Area "C"	5	0%	5	04-Aug-2022	11-Aug-2022	-17																
08141.02	HANG DOORS - Area "C"	5	0%	5	04-Aug-2022	11-Aug-2022	-17																
09512.02	INSTALL ACOUSTICAL CLG TILE - Area "C"	2	0%	2	04-Aug-2022	08-Aug-2022	-17																
12366.02	COUNTERTOPS- Area "C"	5	0%	5	05-Aug-2022	12-Aug-2022	-13																
10110.02	MARKER & SMART BOARDS - Area "C"	5	0%	5	08-Aug-2022	15-Aug-2022	-9																
10141.02	SIGNAGE - Area "C"	3	0%	3	08-Aug-2022	11-Aug-2022	-9																
23059.02	HVAC TEST & BALANCE - Area "C"	5	0%	5	08-Aug-2022	15-Aug-2022	-9																
09654.02	LINOLEUM FLOORING - Area "C"	10	0%	10	11-Aug-2022	25-Aug-2022	-17																
22400.02	PLUMB FIXTURES / TRIM - Area "C"	10	0%	10	11-Aug-2022	25-Aug-2022	-17																
09651.02	INSTALL RUBBER BASE - Area "C"	5	0%	5	18-Aug-2022	25-Aug-2022	-17																
10280.02	RESTROOM ACCESSORIES - Area "C"	5	0%	5	18-Aug-2022	25-Aug-2022	-17																
SITE IMPROVEMENTS - P2																							
31250.SI	EROSION & SEDIMENT CONTROL - Site - P2	3	100%	0	13-Jun-2022 A	13-Jun-2022 A																	
33400.SI	STORM DRAINAGE - Site - P2	10	100%	0	13-Jun-2022 A	20-Jul-2022 A																	
02413.SI	SITE / STRUCTURE DEMO - Site - P2	10	100%	0	05-Jul-2022 A	20-Jul-2022 A																	
32500.SI	CONC PAVERS / CY - Site - P2	5	100%	0	10-Jul-2022 A	20-Jul-2022 A																	
33111.SI	WATER DISTRIBUTION & CONNECT - Site - P2	10	100%	0	15-Jul-2022 A	20-Jul-2022 A																	
33300.SI	SANITARY SEWER & CONNECT - Site - P2	10	0%	10	25-Jul-2022	05-Aug-2022	-26																
33402.SI	TIE IN SUB DRAINAGE - Site - P2	10	0%	10	25-Jul-2022	05-Aug-2022	-10																
31206.SI	BACKFILL UTILITIES - Site - P2	5	0%	5	01-Aug-2022	05-Aug-2022	-26																
31205.SI	ROUGH GRADING - Site - P2	10	0%	10	02-Aug-2022	15-Aug-2022	-26																
31209.SI	STABILIZE SUBGRADE - Site - P2	5	0%	5	11-Aug-2022	17-Aug-2022	-24																
32110.SI	F/R/P CONC WALK WAYS / CY - Site - P2	10	0%	10	16-Aug-2022	29-Aug-2022	-26																
32125.SI	ASPHALT WAKWAYS - Site - P2	5	0%	5	24-Aug-2022	30-Aug-2022	-26																
31210.SI	FINAL GRADING - Site - P2	5	0%	5	30-Aug-2022	06-Sep-2022	-26																
32126.SI	ASPHALT PAVEMENT - Site - P2	5	0%	5	31-Aug-2022	07-Sep-2022	-26																
06150.SI	PLASTIC WALKWAY EDGING - Site - P2	3	0%	3	31-Aug-2022	02-Sep-2022	-26																
32921.SI	LANDSCAPING / GRASSING - Site - P2	5	0%	5	06-Sep-2022	12-Sep-2022	-26																

█ Actual Work
 █ Critical Remaining Work
 ▼ Summary
█ Remaining Work
 ◆ Milestone

Activity ID	Activity Name	Original Duration	Duration % Complete	Remaining Duration	Start	Finish	Total Float	Q											
								M	J	J	A	S	O	N	D	J	F	M	A
COMPLETION - P2								▼ 21-Sep-2022, COMPLETION - P2											
01728.CPL	FINAL CLEAN - Area "C" - P2	10	0%	10	08-Sep-2022	21-Sep-2022	-26	■ FINAL CLEAN - Area "C" - P2											
01738.CPL	FINAL INSPECTIONS - Area "C" - P2	5	0%	5	15-Sep-2022	21-Sep-2022	-26	■ FINAL INSPECTIONS - Area "C" - P2											
PHASE 3								▼ 23-Aug-2022, PHASE 3											
MODULAR CLASSROOMS								▼ 23-Aug-2022, MODULAR CLASSROOMS											
31251.P3	EROSION & SEDIMENT CONTROL - MC - P3	3	0%	3	25-Jul-2022*	27-Jul-2022	-16	■ EROSION & SEDIMENT CONTROL - MC - P3											
02411.P3	ELEC SAFE OFF / DEMO - MC - P3	5	0%	5	27-Jul-2022	02-Aug-2022	-16	■ ELEC SAFE OFF / DEMO - MC - P3											
02412.P3	PLUMB DISCONNECT / DEMO - MC - P3	4	0%	4	28-Jul-2022	02-Aug-2022	-16	■ PLUMB DISCONNECT / DEMO - MC - P3											
02413.P3	HVAC DISCONNECT / DEMO - MC - P3	4	0%	4	01-Aug-2022	04-Aug-2022	-16	■ HVAC DISCONNECT / DEMO - MC - P3											
02415.P3	MODULAR DEMO / REMOVAL - MC - P3	10	0%	10	05-Aug-2022	18-Aug-2022	-16	■ MODULAR DEMO / REMOVAL - MC - P3											
01740.P3	FINAL CLEAN - MC - P3	3	0%	3	19-Aug-2022	23-Aug-2022	-16	■ FINAL CLEAN - MC - P3											
01745.P3	FINAL INSPECTIONS - MC - P3	3	0%	3	19-Aug-2022	23-Aug-2022	-16	■ FINAL INSPECTIONS - MC - P3											
PHASE 4								▼ 20-Sep-2022, PHASE 4											
BOILER ROOM - AREA "B"								▼ 27-Jul-2022, BOILER ROOM - AREA "B"											
DEMOLITION								▼ 01-Jul-2022 A, DEMOLITION											
02425.01	ELEC DISCONNECT / DEMOLITION - Boiler - Area "A"	5	100%	0	27-Jun-2022 A	01-Jul-2022 A		■ ELEC DISCONNECT / DEMOLITION - Boiler - Area "A"											
02426.01	PLUMB DISCONNECT / CAP / DEMO - Boiler - Area "A"	5	100%	0	27-Jun-2022 A	01-Jul-2022 A		■ PLUMB DISCONNECT / CAP / DEMO - Boiler - Area "A"											
02429.01	SELECTIVE DEMOLITION - Boiler - Area "A"	3	100%	0	27-Jun-2022 A	29-Jun-2022 A		■ SELECTIVE DEMOLITION - Boiler - Area "A"											
ROUGH-IN								▼ 14-Jul-2022 A, ROUGH-IN											
23210.01	HVAC PIPING / VALVES - Boiler - Area "A"	5	100%	0	01-Jul-2022 A	06-Jul-2022 A		■ HVAC PIPING / VALVES - Boiler - Area "A"											
23213.01	HVAC PUMPS - Boiler - Area "A"	3	100%	0	01-Jul-2022 A	06-Jul-2022 A		■ HVAC PUMPS - Boiler - Area "A"											
01713.01	INSPECT ROUGH-IN - Boiler - Area "A"	3	100%	0	11-Jul-2022 A	14-Jul-2022 A		■ INSPECT ROUGH-IN - Boiler - Area "A"											
FINISHES								▼ 27-Jul-2022, FINISHES											
26271.01	ELEC WIRING EQUIP - Boiler - Area "A"	3	100%	0	06-Jul-2022 A	08-Jul-2022 A		■ ELEC WIRING EQUIP - Boiler - Area "A"											
23056.01	HVAC CONTROLS - Boiler - Area "A"	3	100%	0	14-Jul-2022 A	19-Jul-2022 A		■ HVAC CONTROLS - Boiler - Area "A"											
01725.01	FINAL CLEAN - Boiler - Area "A"	3	0%	3	25-Jul-2022	27-Jul-2022	27	■ FINAL CLEAN - Boiler - Area "A"											
01730.01	FINAL INSPECTIONS - Boiler - Area "A"	3	0%	3	25-Jul-2022	27-Jul-2022	27	■ FINAL INSPECTIONS - Boiler - Area "A"											
BASEMENT								▼ 30-Aug-2022, BASEMENT											
DEMOLITION								▼ 15-Jul-2022 A, DEMOLITION											
AREA "A"								▼ 11-Jul-2022 A, AREA "A"											
02415.01	SELECTIVE DEMOLITION - B Flr - Area "A"	5	100%	0	27-Jun-2022 A	01-Jul-2022 A		■ SELECTIVE DEMOLITION - B Flr - Area "A"											
02414.01	ELEC DISCONNECT / DEMOLITION - B Flr - Area "A"	10	100%	0	27-Jun-2022 A	11-Jul-2022 A		■ ELEC DISCONNECT / DEMOLITION - B Flr - Area "A"											
02418.01	HVAC DUCTWORK & PIPING DEMO - B Flr - Area "A"	5	100%	0	28-Jun-2022 A	10-Jul-2022 A		■ HVAC DUCTWORK & PIPING DEMO - B Flr - Area "A"											
02416.01	PLUMB DEMOLITION - B Flr - Area "A"	10	100%	0	28-Jun-2022 A	10-Jul-2022 A		■ PLUMB DEMOLITION - B Flr - Area "A"											

Activity ID	Activity Name	Original Duration	Duration % Complete	Remaining Duration	Start	Finish	Total Float	Q																						
								M	J	J	A	S	O	N	D	J	F	M	A	M	J	J	A	S	O	N	D	J	F	M
AREA "A"								▼ 15-Jul-2022 A, AREA "A"																						
02415.02	SELECTIVE DEMOLITION - 1st Flr - Area "A"	7	100%	0	06-Jul-2022 A	15-Jul-2022 A		█ SELECTIVE DEMOLITION - 1st Flr - Area "A"																						
02417.02	HVAC DEMOLITION - 1st Flr - Area "A"	5	100%	0	06-Jul-2022 A	15-Jul-2022 A		█ HVAC DEMOLITION - 1st Flr - Area "A"																						
02414.02	ELEC DISCONNECT / DEMOLITION - 1st Flr - Area "A"	5	100%	0	06-Jul-2022 A	15-Jul-2022 A		█ ELEC DISCONNECT / DEMOLITION - 1st Flr - Area "A"																						
02416.02	PLUMB DEMOLITION - 1st Flr - Area "A"	4	100%	0	06-Jul-2022 A	15-Jul-2022 A		█ PLUMB DEMOLITION - 1st Flr - Area "A"																						
AREA "B"								▼ 15-Jul-2022 A, AREA "B"																						
02424.02	HVAC DEMOLITION - 1st Flr - Area "B"	8	100%	0	06-Jul-2022 A	15-Jul-2022 A		█ HVAC DEMOLITION - 1st Flr - Area "B"																						
02423.02	ELEC DISCONNECT / DEMOLITION - 1st Flr - Area "B"	6	100%	0	06-Jul-2022 A	15-Jul-2022 A		█ ELEC DISCONNECT / DEMOLITION - 1st Flr - Area "B"																						
02422.02	SELECTIVE DEMOLITION - 1st Flr - Area "B"	7	100%	0	06-Jul-2022 A	15-Jul-2022 A		█ SELECTIVE DEMOLITION - 1st Flr - Area "B"																						
ROUGH-IN								▼ 15-Aug-2022, ROUGH-IN																						
AREA "A"								▼ 04-Aug-2022, AREA "A"																						
22074.02	PLUMB U/S ROUGH-IN - 1st Flr - Area "A"	3	100%	0	01-Jul-2022 A	06-Jul-2022 A		█ PLUMB U/S ROUGH-IN - 1st Flr - Area "A"																						
03310.02	F/R/P CONC SLAB @ DEMO - 1st Flr - Area "A"	3	100%	0	07-Jul-2022 A	11-Jul-2022 A		█ F/R/P CONC SLAB @ DEMO - 1st Flr - Area "A"																						
09221.02	METAL STUD FRAMING - 1st Flr - Area "A"	5	100%	0	12-Jul-2022 A	18-Jul-2022 A		█ METAL STUD FRAMING - 1st Flr - Area "A"																						
23701.02	HVAC EQUIP - 1st Flr - Area "A"	5	60%	2	20-Jul-2022 A	26-Jul-2022	0	█ HVAC EQUIP - 1st Flr - Area "A"																						
23054.02	HVAC DUCT ROUGH-IN - 1st Flr - Area "A"	5	60%	2	20-Jul-2022 A	26-Jul-2022	0	█ HVAC DUCT ROUGH-IN - 1st Flr - Area "A"																						
26056.02	ELEC WALL ROUGH-IN - 1st Flr - Area "A"	5	0%	5	25-Jul-2022	29-Jul-2022	0	█ ELEC WALL ROUGH-IN - 1st Flr - Area "A"																						
28466.02	FIRE ALARM ROUGH-IN - 1st Flr - Area "A"	5	0%	5	25-Jul-2022	29-Jul-2022	0	█ FIRE ALARM ROUGH-IN - 1st Flr - Area "A"																						
23056.02	HVAC LOUVERS - 1st Flr - Area "A"	3	0%	3	25-Jul-2022	27-Jul-2022	1	█ HVAC LOUVERS - 1st Flr - Area "A"																						
04253.02	INSTALL WINDOW SASH - 1st Flr - Area "A"	2	0%	2	25-Jul-2022	26-Jul-2022	1	█ INSTALL WINDOW SASH - 1st Flr - Area "A"																						
23212.02	HVAC PIPING - 1st Flr - Area "A"	5	0%	5	25-Jul-2022	29-Jul-2022	0	█ HVAC PIPING - 1st Flr - Area "A"																						
08122.02	HM DOORS & FRAMES - 1st Flr - Area "A"	3	0%	3	25-Jul-2022	27-Jul-2022	1	█ HM DOORS & FRAMES - 1st Flr - Area "A"																						
22075.02	PLUMB WALL ROUGH-IN - 1st Flr - Area "A"	5	0%	5	25-Jul-2022	29-Jul-2022	0	█ PLUMB WALL ROUGH-IN - 1st Flr - Area "A"																						
26241.02	ELEC PANELS - 1st Flr - Area "A"	5	0%	5	25-Jul-2022	29-Jul-2022	6	█ ELEC PANELS - 1st Flr - Area "A"																						
01700.02	INSPECT ROUGH-IN - 1st Flr - Area "A"	3	0%	3	29-Jul-2022	02-Aug-2022	0	█ INSPECT ROUGH-IN - 1st Flr - Area "A"																						
26273.02	ELEC WIRING EQUIP - 1st Flr - Area "A"	5	0%	5	29-Jul-2022	04-Aug-2022	8	█ ELEC WIRING EQUIP - 1st Flr - Area "A"																						
26054.02	ELEC O/H ROUGH-IN - 1st Flr - Area "A"	5	0%	5	29-Jul-2022	04-Aug-2022	3	█ ELEC O/H ROUGH-IN - 1st Flr - Area "A"																						
22077.02	PLUMB O/H ROUGH-IN - 1st Flr - Area "A"	5	0%	5	29-Jul-2022	04-Aug-2022	3	█ PLUMB O/H ROUGH-IN - 1st Flr - Area "A"																						
26057.02	ELEC WIRING - 1st Flr - Area "A"	5	0%	5	29-Jul-2022	04-Aug-2022	3	█ ELEC WIRING - 1st Flr - Area "A"																						
AREA "B"								▼ 15-Aug-2022, AREA "B"																						
26058.02	ELEC ROUGH-IN - 1st Flr - Area "B"	5	0%	5	25-Jul-2022	29-Jul-2022	0	█ ELEC ROUGH-IN - 1st Flr - Area "B"																						
28467.02	FIRE ALARM ROUGH-IN - 1st Flr - Area "B"	8	0%	8	25-Jul-2022	03-Aug-2022	9	█ FIRE ALARM ROUGH-IN - 1st Flr - Area "B"																						
04254.02	INSTALL WINDOW SASH - 1st Flr - Area "B"	3	0%	3	25-Jul-2022	27-Jul-2022	5	█ INSTALL WINDOW SASH - 1st Flr - Area "B"																						
23057.02	HVAC LOUVERS - 1st Flr - Area "B"	3	0%	3	26-Jul-2022	28-Jul-2022	5	█ HVAC LOUVERS - 1st Flr - Area "B"																						
23055.02	HVAC DUCT ROUGH-IN - 1st Flr - Area "B"	5	0%	5	27-Jul-2022	02-Aug-2022	5	█ HVAC DUCT ROUGH-IN - 1st Flr - Area "B"																						

█ Actual Work
 █ Critical Remaining Work
 ▼ Summary
█ Remaining Work
 ◆ Milestone

Activity ID	Activity Name	Original Duration	Duration % Complete	Remaining Duration	Start	Finish	Total Float	Q														
								M	J	J	A	S	O	N	D	J	F	M	A	M	J	J
27132.02	COMM DEVICE / TRIM - 1st Flr - Area "A"	3	0%	3	23-Aug-2022	25-Aug-2022	0															
01727.02	FINAL CLEAN - 1st Flr - Area "A"	3	0%	3	26-Aug-2022	30-Aug-2022	0															
01732.02	FINAL INSPECTIONS - 1st Flr - Area "A"	3	0%	3	26-Aug-2022	30-Aug-2022	0															
AREA "B"																						
09013.02	PLASTER RESTORATION - 1st Flr - Area "B"	5	0%	5	02-Aug-2022	08-Aug-2022	1															
09519.02	REPLACE MODIFY CEILING GRID - 1st Flr - Area "B"	4	0%	4	09-Aug-2022	12-Aug-2022	1															
23006.02	HVAC EQUIP START-UP - 1st Flr - Area "B"	2	0%	2	11-Aug-2022	12-Aug-2022	4															
26513.02	ELEC LIGHTING FIXTURES - 1st Flr - Area "B"	5	0%	5	11-Aug-2022	17-Aug-2022	0															
06413.02	MILLWORK - 1st Flr - Area "B"	2	0%	2	12-Aug-2022	15-Aug-2022	4															
08143.02	HANG DOORS - 1st Flr - Area "A"	2	0%	2	15-Aug-2022	16-Aug-2022	3															
09657.02	VCT FLOORING / BASE - 1st Flr - Area "B"	3	0%	3	15-Aug-2022	17-Aug-2022	4															
09520.02	INSTALL ACOUSTICAL CLG TILE - 1st Flr - Area "B"	2	0%	2	18-Aug-2022	19-Aug-2022	0															
09920.02	PAINT - 1st Flr - Area "B"	3	0%	3	22-Aug-2022	24-Aug-2022	0															
26152.02	ELEC DEVICE / TRIM - 1st Flr - Area "B"	3	0%	3	22-Aug-2022	24-Aug-2022	0															
28314.02	INSTALL F/A DEVICE / TRIM - 1st Flr - Area "B"	4	0%	4	22-Aug-2022	25-Aug-2022	0															
08713.02	INSTALL HARDWARE - 1st Flr - Area "B"	2	0%	2	23-Aug-2022	24-Aug-2022	1															
01728.02	FINAL CLEAN - 1st Flr - Area "B"	3	0%	3	26-Aug-2022	30-Aug-2022	0															
01733.02	FINAL INSPECTIONS - 1st Flr - Area "B"	3	0%	3	26-Aug-2022	30-Aug-2022	0															
2ND FLOOR																						
DEMOLITION																						
AREA "A"																						
02424.03	HVAC DEMOLITION - 2nd Flr - Area "A"	5	100%	0	06-Jul-2022 A	15-Jul-2022 A																
02423.03	ELEC DISCONNECT / DEMOLITION - 2nd Flr - Area "A"	5	100%	0	06-Jul-2022 A	15-Jul-2022 A																
02422.03	SELECTIVE DEMOLITION - 2nd Flr - Area "A"	5	100%	0	06-Jul-2022 A	15-Jul-2022 A																
ROUGH-IN																						
AREA "A"																						
23213.03	HVAC PIPING - 2nd Flr - Area "A"	5	70%	2	05-Jul-2022 A	26-Jul-2022	18															
26058.03	ELEC ROUGH-IN - 2nd Flr - Area "A"	5	100%	0	06-Jul-2022 A	18-Jul-2022 A																
28467.03	FIRE ALARM ROUGH-IN - 2nd Flr - Area "A"	8	100%	0	06-Jul-2022 A	18-Jul-2022 A																
23703.03	HVAC EQUIP - 2nd Flr - Area "A"	6	70%	2	06-Jul-2022 A	26-Jul-2022	18															
26276.03	ELEC WIRING EQUIP - 2nd Flr - Area "A"	5	70%	2	06-Jul-2022 A	26-Jul-2022	18															
23055.03	HVAC DUCT ROUGH-IN - 2nd Flr - Area "A"	5	100%	0	06-Jul-2022 A	18-Jul-2022 A																
26242.03	ELEC PANELS - 2nd Flr - Area "A"	5	100%	0	06-Jul-2022 A	18-Jul-2022 A																
26059.03	ELEC WIRING - 2nd Flr - Area "A"	5	70%	2	06-Jul-2022 A	26-Jul-2022	10															
04254.03	INSTALL WINDOW SASH - 2nd Flr - Area "A"	2	0%	2	25-Jul-2022	26-Jul-2022	15															

■ Actual Work
 ■ Critical Remaining Work
 ▼ Summary
■ Remaining Work
 ◆ Milestone

Activity ID	Activity Name	Original Duration	Duration % Complete	Remaining Duration	Start	Finish	Total Float	Q														
								M	J	J	A	S	O	N	D	J	F	M	A	M	J	J
08124.03	HM DOORS & FRAMES - 2nd Flr - Area "A"	3	0%	3	25-Jul-2022	27-Jul-2022	13															
23057.03	HVAC LOUVERS - 2nd Flr - Area "A"	3	0%	3	26-Jul-2022	28-Jul-2022	15															
01703.03	INSPECT ROUGH-IN - 2nd Flr - Area "A"	3	0%	3	29-Jul-2022	02-Aug-2022	15															
FINISHES								▼ 17-Aug-2022, FINISHES														
AREA "A"								▼ 17-Aug-2022, AREA "A"														
09014.03	PLASTER RESTORATION - 2nd Flr - Area "A"	5	60%	2	19-Jul-2022 A	26-Jul-2022	14															
26513.03	ELEC LIGHTING FIXTURES - 2nd Flr - Area "A"	5	0%	5	26-Jul-2022	02-Aug-2022	10															
08143.03	HANG DOORS - 2nd Flr - Area "A"	2	0%	2	28-Jul-2022	29-Jul-2022	13															
09520.03	INSTALL ACOUSTICAL CLG TILE - 2nd Flr - Area "A"	2	0%	2	02-Aug-2022	04-Aug-2022	10															
23006.03	HVAC EQUIP START-UP - 2nd Flr - Area "A"	2	0%	2	03-Aug-2022	04-Aug-2022	15															
06413.03	MILLWORK - 2nd Flr - Area "A"	2	0%	2	04-Aug-2022	08-Aug-2022	10															
09658.03	VCT FLOORING / BASE - 2nd Flr - Area "A"	3	0%	3	04-Aug-2022	09-Aug-2022	11															
09920.03	PAINT - 2nd Flr - Area "A"	2	0%	2	08-Aug-2022	10-Aug-2022	10															
26152.03	ELEC DEVICE / TRIM - 2nd Flr - Area "A"	3	0%	3	08-Aug-2022	11-Aug-2022	10															
28314.03	INSTALL F/A DEVICE / TRIM - 2nd Flr - Area "A"	4	0%	4	08-Aug-2022	12-Aug-2022	10															
08713.03	INSTALL HARDWARE - 2nd Flr - Area "A"	2	0%	2	09-Aug-2022	11-Aug-2022	11															
01728.03	FINAL CLEAN - 2nd Flr - Area "A"	2	0%	2	12-Aug-2022	16-Aug-2022	10															
01733.03	FINAL INSPECTIONS - 2nd Flr - Area "A"	3	0%	3	12-Aug-2022	17-Aug-2022	10															
ROOF								▼ 25-Aug-2022, ROOF														
AREA "A"								▼ 25-Aug-2022, AREA "A"														
02422.04	SELECTIVE DEMOLITION - RF - Area "A"	3	100%	0	11-Jul-2022 A	13-Jul-2022 A																
06100.04	ROUGH CARPENTRY - RF - Area "A"	3	100%	0	14-Jul-2022 A	18-Jul-2022 A																
07220.04	UNDERLAYMENT / FLASHING - RF - Area "A"	3	70%	1	19-Jul-2022 A	25-Jul-2022	3															
07315.04	SHINGLES - RF - Area "A"	7	0%	7	25-Jul-2022	03-Aug-2022	3															
06155.04	PVC FASCIA & TRIM - RF - Area "A"	5	0%	5	03-Aug-2022	10-Aug-2022	3															
07625.04	GUTTERS & DOWNSPOUTS - RF - Area "A"	3	0%	3	10-Aug-2022	15-Aug-2022	3															
07920.04	CAULKING - RF - Area "A"	2	0%	2	15-Aug-2022	17-Aug-2022	3															
09911.04	PAINTING - RF - Area "A"	3	0%	3	17-Aug-2022	22-Aug-2022	3															
01728.04	FINAL CLEAN - RF - Area "A"	3	0%	3	22-Aug-2022	25-Aug-2022	3															
01733.04	FINAL INSPECTIONS - RF - Area "A"	3	0%	3	22-Aug-2022	25-Aug-2022	3															
SITE IMPROVEMENTS - P4								▼ 20-Sep-2022, SITE IMPROVEMENTS														
03300.SI	F/R/P CONC TRANS PAD - Site - P4	3	100%	0	01-Apr-2022 A	15-Apr-2022 A																
26051.SI	ELEC U/G SECONDARY SERVICE ROUGH-IN - Site - P4	5	100%	0	01-Apr-2022 A	15-Apr-2022 A																
01571.SI	EROSION & SEDIMENT CONTROL - Site - P4	3	100%	0	29-Jun-2022 A	01-Jul-2022 A																
33700.SI	UTILITY POLE & OH LINES RELOCATE - Site - P4	10	100%	0	11-Jul-2022 A	22-Jul-2022 A																

■ Actual Work
 ■ Critical Remaining Work
 ▼ Summary
■ Remaining Work
 ◆ Milestone

