



South Orange and Maplewood School District
South Mountain- South Mountain Annex/Elementary School Projects
South Orange, N.J.

MAY CONSTRUCTION ACTIVITIES

South Mountain Elementary School

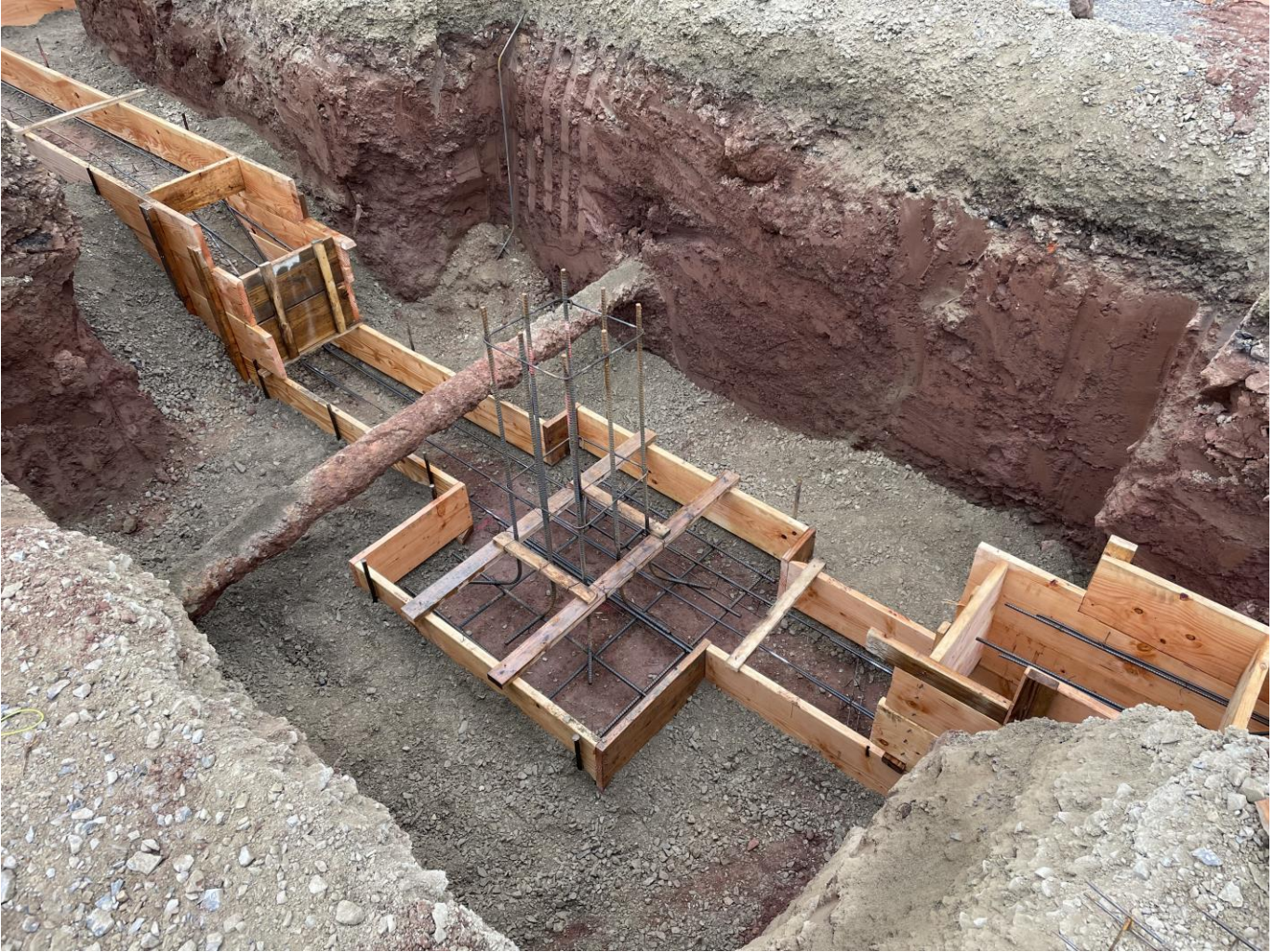
- Contractor continued working on submittals for review / approval
- Excavate for proposed addition footings (AEL inspect bottom of footing)
- Begin forming for concrete footings
- Tie and install rebar (AEL inspect)
- Pour concrete for footings (AEL inspect)
- Continue 2nd shift pipe installation above ceilings in classrooms
- Remove boiler room window for access to get new boilers in

South Mountain Annex School

- Contractor continued working on submittals for review/approval



Footing forms and rebar



Footing forms and rebar. Footing stepped below sanitary pipe



Footing forms



Poured concrete footings



Pour concrete footings



Footings and rebar