



**Henderson Collegiate**

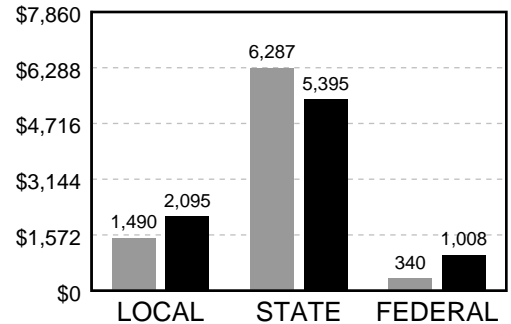
906 Health Center Road  
Henderson, NC 27536

(252) 598-1038  
Grades 4-6  
Regular School  
Traditional Calendar  
Title I

**FINANCIAL SUPPORT**

**Source of Funds (Amount per Student)**

Charter schools in North Carolina operate with funding from local, state, and federal sources. The financial support reflected in these numbers includes all expenses concerned with operating a charter school, including teacher and administrator salaries, textbooks, and other educational supplies and materials.



■ Charter School ■ State Average

**SCHOOL PROFILE**

**School Size**

The total number of students in our school and the average number of students in schools with similar grade ranges in the state.

OUR SCHOOL	STATE
287	497

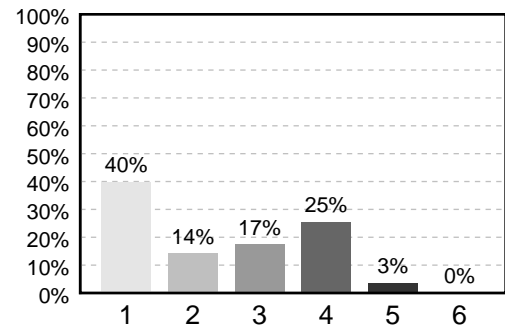
**Average Class Size**

The average number of students enrolled in a "typical" K-8 classroom.  
\* Due to data entry issues, some class sizes in select schools are unavailable for 2012-13.

	OUR SCHOOL	STATE
Grade 4	23	21
Grade 5	18	21
Grade 6	18	22

**Use of Funds**

Education is a labor-intensive enterprise, as reflected in the accompanying chart. Salaries for teachers and other staff are usually the largest expense in a charter school. State and federal funds are generally allotted for specific purposes, services, or programs.



■ 1. Salaries ■ 3. Supplies & Materials ■ 5. Equipment  
■ 2. Benefits ■ 4. Purchased Services ■ 6. Other

**HIGH STUDENT PERFORMANCE**

**Performance of Students in Each Grade on the North Carolina End-of-Grade Tests**

Percentage of Students' Scores At or Above Grade Level

	Grade 4		Grade 5		Grade 6		OVERALL	
	Reading	Math	Reading	Math	Reading	Math	Reading	Math
<b>Our School</b>	29.8%	41.5%	35.5%	66.7%	53.8%	50.5%	39.6%	52.9%
<b>State</b>	43.7%	47.6%	39.5%	47.7%	46.4%	38.9%	43.9%	42.3%

N/A = Fewer than five students

**SAFE, ORDERLY AND CARING SCHOOLS**

**School Safety**

The number of acts of crime or violence reported below includes all acts occurring in school, at a bus stop, on a school bus, on school grounds, or during off-campus, school-sponsored activities.

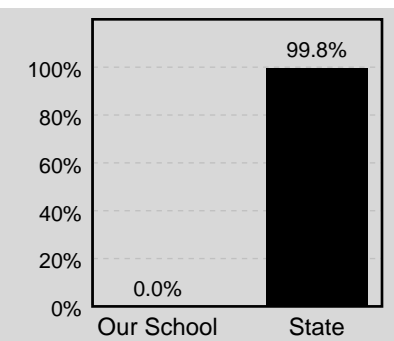
Out of 287 students in our school, there were a total of 2 act[s] of crime or violence.

The number of acts of crime or violence reported per 100 students:

<b>OUR SCHOOL</b>	0.7
<b>STATE</b>	0.22

**Access to Technology**

Percentage of classrooms connected to the Internet



**HIGH STUDENT PERFORMANCE, CONTINUED**

**Performance of Each Student Group on the North Carolina End-of-Grade Tests**

Percentage of Students, Grouped by Gender, Ethnicity, and Other Factors, Who Passed BOTH the Reading and Math Tests

	Male	Female	White	Black	Hispanic	Amer. Indian	Asian	Pacific Islander	Two or More Races	E.D.	N.E.D.	L.E.P.	Migrant Students	Students with Disabilities
<b>Our School</b>	28.9%	32.6%	<5%	29.4%	44.7%	N/A	N/A	N/A	28.6%	28.0%	46.3%	18.2%	N/A	<5%
<b># of tests taken</b>	142	138	7	228	38	N/A	N/A	N/A	7	239	41	11	N/A	29
<b>State</b>	30.6%	33.5%	43.5%	14.2%	19.3%	17.3%	56.7%	28.7%	32.2%	17.4%	49.8%	5.8%	12.4%	6.6%

E.D. = Economically Disadvantaged      N.E.D. = Not Economically Disadvantaged      L.E.P. = Limited English Proficiency  
 N/A = Fewer than five students

**Annual Measurable Objectives (AMOs)**

Per the Elementary and Secondary Education Act (ESEA), North Carolina set AMOs in reading and mathematics based on 2012-13 data.

For information about the READY Accountability Model and the Annual Measurable Objectives (AMOs), visit <http://www.ncpublicschools.org/accountability/reporting/>.

Our school met 17 out of 17 performance targets.

In any group where the percentage of students at a grade level is greater than 95% or less than 5%, the actual values are not displayed because of federal privacy regulations. In these cases the results are shown as >95% or <5% for the group.

**READY**

Effective with the 2012-13 school year, the North Carolina Department of Public Instruction changed the accountability model from the ABCs of Public Education to a new indicator-based reporting model called the READY Accountability Model. The State Board of Education identified indicators that would help educators, parents and the public understand the status and progress that schools are making toward ensuring that all students are college- and/or career-ready.

These new indicators include new state-administered North Carolina End-of-Grade (EOG) and North Carolina End-of-Course (EOC) assessments, college- and career-readiness examinations (The ACT and ACT WorkKeys), math course rigor, and high school graduation rates. In addition to these indicators, other valuable information is reported including school growth as measured by EVAAS, Annual Measureable Objectives, and participation in a graduation project.

To access the READY Accountability Model reporting please go to <http://www.ncpublicschools.org/accountability/reporting/>.

**Keeping you informed**

More information about your school is available on the NC School Report Cards website at:  
<http://www.ncreportcards.org>

**QUALITY TEACHERS**

	Total Number of Classroom Teachers*	Fully Licensed Teachers**	Classes Taught by Highly Qualified Teachers
<b>Our School</b>	12	33%	73%
<b>State</b>	34	99%	100%

\* The total number of teachers in this school and the average number of teachers in schools with similar grade ranges at the district and state level.

\*\* According to the charter school statute, a charter school is required to have a minimum of 50% of its teachers licensed.

