

# Elementary Facility Plan Citizen Task Force

Meeting #9: December 4, 2024



# Meeting Agenda

- Meeting review and orientation **Done by 5:50pm**
- Presentation, evaluation, and recommendation of elementary facility consolidation option bundles and possible variations  
**Done by 7:10 pm**
- Discussion of other potential Task Force recommendations **Done by 7:40pm**
- Wrap up **Done by (BEFORE?!) 8:00pm**



# Upcoming Meetings Preview

- All to be held at Longfellow Administration Center, 415 Seymour Street
- **12/9** (5 p.m.)—Presentation of Task Force recommendation to School Board. Longfellow.
- **12/16** (5 p.m.)—CESA 10 facilities assessment report to School Board
- **Future Board Meeting:** Special School Board meeting to discuss and invite public input on Task Force recommendation, and for Board to provide direction. Date, time, location TBD.
- **1/13**—Deadline for Board decision on potential Spring referendum question(s)



# Review

- November 13<sup>th</sup> Meeting Outcomes
- Questions & Responses
- Task Force Charge and Norms
- Task Force Evaluation Criteria



# Review of Task Force's Charge from Board

- Develop, evaluate, and **recommend one or two preferred elementary school facility options** by the end of 2024
- Advise **whether the number of elementary schools in the District should be reduced and if so, then how, where, and when**
- Serve as factual “key communicators” to and from the District community throughout the process
- Prepare and present a report summarizing findings and advisory recommendations to the School Board, with consultant and administrative support
- Consider student enrollment projections, whether 4K should be included in all elementary schools, conditions and locations of school buildings, and other option evaluation criteria approved by School Board following Task Force advice



# Review of Option Evaluation Criteria

- 1. Fiscal Responsibility:** This highest priority criterion should consider building improvements, staffing requirements, and capital and operational costs relative to District financial constraints.
- 2. Efficient Building Utilization:** Current and projected enrollment should be reasonably balanced among our elementary schools, not substantially (i.e., more than 30%) below functional building capacities, and not above functional building capacities.



# Review of Option Evaluation Criteria

3. **Maintain Educational Opportunities:** Extent to which the option provides a full and equal range of educational services and offerings across all standard elementary schools.
4. **Minimize Impact on Students:** The number of students affected by any changes should be minimized to the extent practical, except that movements of too small of groups should also be minimized.
5. **Schools Close to Students:** Elementary school buildings should be close to where concentrations of students live, and where students can safely walk to school.



# Results from 11/13 Meeting – Last 3 Options

- **“Lincoln to G.D. Jones (and 4K Academy from G.D. Jones to Lincoln)” and “Grant to Jefferson (and 4K Academy from Jefferson to Lincoln)”** options received a majority of “yes” votes against all 5 option evaluation criteria.
- Reasons for support of these options:
  - Shifts all Lincoln and Grant elementary school students through 1-to-1 consolidations (i.e., all students from 1 school shifted to 1 other school)
  - Shifts elementary students to schools with separate gyms and cafeterias, air conditioning, and “most suitable” learning spaces
  - Consolidates a westside 4K Academy in repurposed Lincoln building





# Results from 11/13 Meeting – Last 3 Options

- **“Hawthorn Hills to John Marshall/Franklin (and 4K to Riverview)”** option received a majority of “yes” votes against four of the five option evaluation criteria.
- Reasons for support of this option:
  - Sound attendance area concept
  - Good east side school spacing
  - Retains schools with large numbers of nearby students, and related managed bussing impact
  - Retains schools with at least “more suitable” learning spaces and separate gym/cafeteria spaces



# Results from 11/13 Meeting – Rankings of 10 Options

- After reviewing the 10 elementary facility consolidation options from the Task Force's October and November meetings, and following extensive discussion at the 11/13 meeting, each member ranked all 10 options in order of preference from 1 to 10, with 1 = most preferred option and 10 = least preferred
- With Task Force's consent, members not in attendance on 11/13 were also asked to review the 11/13 meeting materials and offer their votes by last week



# Results from 11/13 Meeting – Rankings of 10 Options

Elementary Facility Option	Average Rank (lower # = higher rank)	#1 Ranks	#10 Ranks
Hewitt-Texas to Riverview	2.5	22	2
Grant to Jefferson (& 4K Academy from Jefferson to Lincoln)	2.9	7	0
Lincoln to G.D. Jones (& 4K Academy from G.D. Jones to Lincoln)	3.1	1	0
Hawthorn Hills to John Marshall/Franklin (& 4K to Riverview)	4.0	6	0
Rib Mountain to South Mountain/G.D. Jones	5.8	1	2
Grant to Jefferson/Lincoln	5.9	0	3
Franklin to Hawthorn Hills/Riverview	6.6	0	1
John Marshall to Hawthorn Hills (& Neigh. 55 to Franklin)	7.0	0	4
Hawthorn Hills to John Marshall/Franklin/Lincoln (& 4K to Riverview)	8.1	0	9
Lincoln to Grant/Hawthorn Hills	9.0	0	16



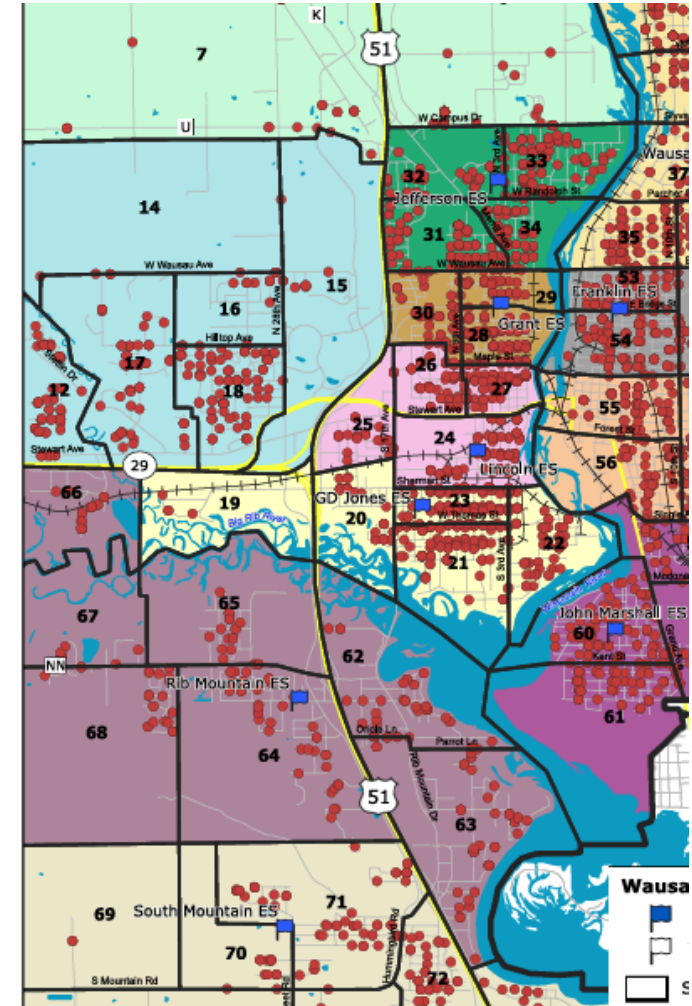
# Results from 11/13 Meeting – Rankings of 10 Options

- Four most preferred options:
  - Hewitt-Texas to Riverview
  - Grant to Jefferson (and 4K Academy from Jefferson to Lincoln)
  - Lincoln to G.D. Jones (and 4K Academy from G.D. Jones to Lincoln)
  - Hawthorn Hills to John Marshall/Franklin (and 4K Academy to Riverview)
- Lowest of four ranked 1.8 points “better” than 5th option—biggest gap
- These four options could happen together (two must happen together)
- “Rib Mountain to South Mountain/G.D. Jones” option and “Grant to Jefferson/Lincoln” option arguably fell into a middle preference grouping, trailed by the remaining four options



# Results from 11/13 Meeting – Other Suggested Options?

- Rib Mountain to South Mountain/Stettin?
  - Not without sending Stettin over its functional capacity in the next few years & exceeding maximum capacity in 2030s
- Rib Mountain to South Mountain/G.D. Jones, if G.D. Jones also received Lincoln elementary students and Lincoln was repurposed as a 4K Academy?
  - Not without sending G.D. Jones' enrollment above its functional capacity



Questions, Comments, Reactions?



# For Consideration this Evening...

- From the 11/13 rankings—plus suggestions during the meeting and on ranking forms—we will share 2 potential option “bundles” and 3 potential “variations” to those bundles
  - Option = involves the closing or repurposing of one elementary school, shifting its students to one or more remaining elementary schools
  - Bundle = grouping of individual elementary school facility consolidation options that may in combination meet the Board’s evaluation criteria
  - Variation = potential add-on or substitution within a bundle, or possibly an idea for future consideration or implementation
- Tonight, we aim to achieve a Task Force recommendation on at least one option bundle, with or without variations



# Also for Consideration this Evening...

Task Force will have the opportunity to finalize any additional recommendations related to:

- Phasing of recommended bundle(s), possibly with triggering events
- Maintenance and improvements to remaining elementary schools
- Elementary attendance area adjustment finalization at later date
- Disposition/reuse of school sites and administrative building (Longfellow)
- Any other topics related to Task Force charge





# Bundles and Variations Packet

## Elementary Facility Plan

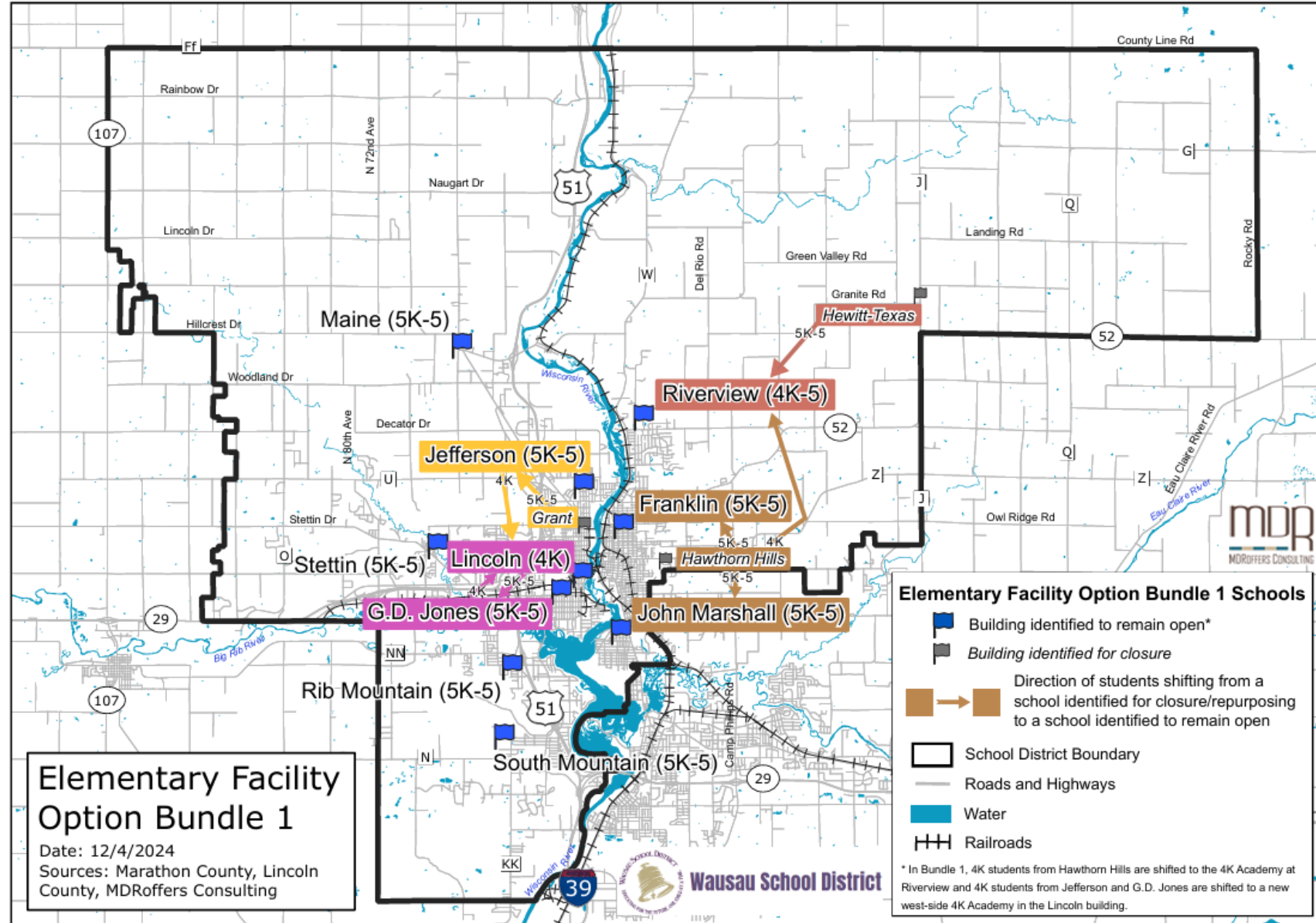
### Citizen Task Force

December 4, 2024



# Elementary Facility Option Bundle 1

- Hewitt-Texas to Riverview
- Hawthorn Hills to John Marshall/Franklin (& 4K Academy to Riverview)
- Grant to Jefferson (& 4K Academy from Jefferson to Lincoln)
- Lincoln to G.D. Jones (& 4K Academy from G.D. Jones to Lincoln)



# Why Bundle 1?

- Comprised of the Task Force's 4 most preferred consolidation options
- Comprehensive solution to fill most of 1,300 empty elementary seats
- Closes or repurposes two east side and two west side schools
- Remaining schools regularly spaced in community
- Receiver schools have large populations of walking zone students
- All schools that would be closed do not have separate gym and cafeteria spaces; all "receiver" schools do have such separate spaces
- All receiver schools have at least "more suitable" learning spaces



# Bundle 1 Against the Evaluation Criteria

## 1. Fiscal Responsibility

<b>10-year</b> maintenance costs avoided	~\$4.1M
<b>Annual</b> operating cost reduction (not bussing)	\$0.4-\$0.5M
<b>Annual</b> staff expense reduction (thru 3 yr attrition)	\$1.6-\$1.8M
State and federal funding impact (AGR/Title 1)	Likely Low
Projected number of bus routes	6-7 more
“Receiver” schools currently without A/C	2 (Franklin, Marshall)
Number of WSD buildings available for sale	3

Cost estimates are in 2024 dollars. Estimated \$0.6 million to add A/C to Franklin; \$0.9 million to Marshall, assuming that deferred maintenance heating system improvements are made at the same time



# Bundle 1 Against the Evaluation Criteria

## 2. Efficient Building Utilization

School	Grades Served	Projected Enrollment		Building Capacity
		2027	2035	
Franklin	5K-5	272	249	301-334
G.D. Jones	5K-5	498	483	528-587
Jefferson	5K-5	471	433	524-582
John Marshall	5K-5	293	271	329-366
Lincoln	4K Academy	252	258	284-316*
Maine	5K-5	235	237	248-276
Rib Mountain	5K-5	170	182	248-276
Riverview	4K Academy, 5K-5	544	524	557-619
South Mountain	5K-5	209	211	373-414
Stettin	5K-5	324	348	373-414
<b>TOTAL</b>	<b>4K Academies + 5K-5</b>	<b>3,268</b>	<b>3,196</b>	<b>3,809-4,232</b>

Would use 84%-86% of total functional building capacity (up from ~70% today)

\* Lincoln's capacity would increase as a ½-day 4K Academy. What is shown is 5K-5 capacity.



# Bundle 1 Against the Evaluation Criteria

## 3. Maintain Educational Opportunities

School	Year built	Last addition/ remodel	Usable Site Area	Separate gym & cafeteria?	A/C?	Learning space suitability
Franklin	1966	1996	Small	X		More Suitable
G.D. Jones	1997	2016	Small	X	X	Most Suitable
Jefferson	1956	2016	Small	X	X	Most Suitable
John Marshall	1922	2000	Small	X		More Suitable
Lincoln (4K only)	1970	1993	Small		X	More Suitable
Maine	1961	2000	Med.		X	Suitable
Rib Mountain	1955	1992	Med.		X	More Suitable
Riverview (4K)	1964	2022	Med.	X	X	Most Suitable
South Mountain	1997	2022	Large		X	More Suitable
Stettin	2000	2022	Large	X	X	More Suitable



# Bundle 1 Against the Evaluation Criteria

## 4. Minimize Impact on Students

Neighborhoods changing attendance areas	18 (24%)
2023-24 <u>5K-5</u> students changing attendance areas	679 (20%)
Impacts middle/high school attendance areas?	No



# Bundle 1 Against the Evaluation Criteria

## 5. Schools Close to Students

Receiver School	2023-24 elementary students living within...			2023-24 walking zone students reassigned to this school	Longest estimated bus travel time	Preschool and wrap-around care providers within 1 mile
	½ mile	1 mile	2 miles			
Franklin	61%	97%	100%	91	20-25 min	6
G.D. Jones	38%	90%	100%	94	20-25 min	3
Jefferson	43%	84%	100%	131	20-25 min	1
John Marshall	46%	62%	100%	88	20-25 min	2
Riverview (5K-5)	17%	33%	71%	0	35-45 min	0

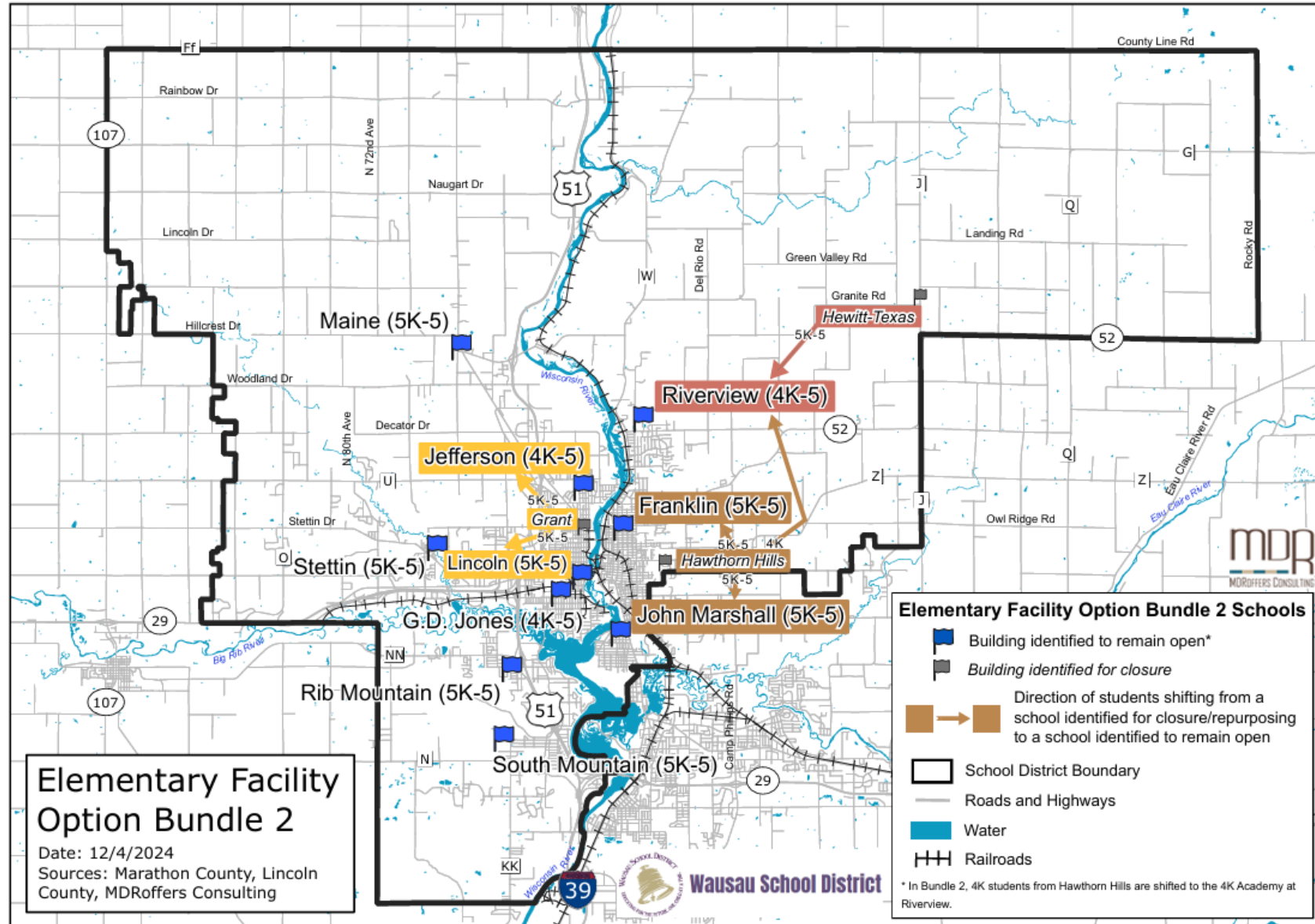
- Roughly 250 4K students, most from the west side of the District, would attend a consolidated 4K Academy at Lincoln, which would no longer serve grades 5K-5.
- Riverview would serve as the District's east side 4K Academy, in addition to remaining a grade 5K-5 site.





# Elementary Facility Option Bundle 2

- Hewitt-Texas to Riverview
- Hawthorn Hills to John Marshall/Franklin (& 4K Academy to Riverview)
- Grant to Jefferson/Lincoln



# Why Bundle 2?

- Represents more modest, incremental solution than Bundle 1, addressing some members' comments
- About half the number of students changing schools as Bundle 1
- Only Hawthorn Hills 4K Academy closed; other three 4K sites remain
- All schools that would be closed do not have separate gym and cafeteria spaces; all "receiver" schools have such separate spaces
- Remaining schools reasonably spaced
- Receiver schools have large populations of walking zone students
- All receiver schools have at least "more suitable" learning spaces



# Bundle 2 Against the Evaluation Criteria

## 1. Fiscal Responsibility

<b>10-year</b> maintenance costs avoided	~\$4.1M
<b>Annual</b> operating cost reduction (not bussing)	\$0.4-\$0.5M
<b>Annual</b> staff expense reduction (thru 3 yr attrition)	\$0.9-\$1.1M
State and federal funding impact (AGR/Title 1)	Likely Low
Projected number of bus routes	3-5 more
“Receiver” schools currently without A/C	2 (Franklin, Marshall)
Number of WSD buildings available for sale	3

Cost estimates are in 2024 dollars. Estimated \$0.6 million to add A/C to Franklin; \$0.9 million to Marshall, assuming that deferred maintenance heating system improvements are made at the same time



# Bundle 2 Against the Evaluation Criteria

## 2. Efficient Building Utilization

School	Grades Served	Projected Enrollment		Building Capacity
		2027	2035	
Franklin	5K-5	272	249	301-334
G.D. Jones	4K Academy, 5K-5	465	467	528-587
Jefferson	4K Academy, 5K-5	504	472	524-582
John Marshall	5K-5	293	271	329-366
Lincoln	5K-5	252	235	284-316
Maine	5K-5	235	237	248-276
Rib Mountain	5K-5	170	182	248-276
Riverview	4K Academy, 5K-5	544	524	557-619
South Mountain	5K-5	209	211	373-414
Stettin	5K-5	324	348	373-414
<b>TOTAL</b>	<b>4K Academies + 5K-5</b>	<b>3,268</b>	<b>3,196</b>	<b>3,809-4,232</b>

Would use 84%-86% of total functional building capacity (up from ~70% today)



# Bundle 2 Against the Evaluation Criteria

## 3. Maintain Educational Opportunities

School	Year built	Last addition/ remodel	Usable Site Area	Separate gym & cafeteria?	A/C?	Learning space suitability
Franklin	1966	1996	Small	X		More Suitable
G.D. Jones (4K)	1997	2016	Small	X	X	Most Suitable
Jefferson (4K)	1956	2016	Small	X	X	Most Suitable
John Marshall	1922	2000	Small	X		More Suitable
Lincoln	1970	1993	Small		X	More Suitable
Maine	1961	2000	Med.		X	Suitable
Rib Mountain	1955	1992	Med.		X	More Suitable
Riverview (4K)	1964	2022	Med.	X	X	Most Suitable
South Mountain	1997	2022	Large		X	More Suitable
Stettin	2000	2022	Large	X	X	More Suitable



# Bundle 2 Against the Evaluation Criteria

## 4. Minimize Impact on Students

Neighborhoods changing attendance areas	14 (18%)
2023-24 <u>5K-5</u> students changing attendance areas	469 (14%)
Impacts middle/high school attendance areas?	No



# Bundle 2 Against the Evaluation Criteria

## 5. Schools Close to Students

Receiver School	2023-24 elementary students living within...			2023-24 walking zone students reassigned to this school	Longest estimated bus travel time	Preschool and wrap-around care providers within 1 mile
	½ mile	1 mile	2 miles			
Franklin	61%	97%	100%	91	20-25 min	6
Jefferson	46%	84%	100%	86	20-25 min	1
John Marshall	46%	62%	100%	88	20-25 min	2
Lincoln	49%	91%	100%	46	20-25 min	3
Riverview (5K-5)	17%	33%	71%	0	35-45 min	0



## Variation A – Single 4K Academy at Hawthorn Hills

- Suggested at 11/13 Task Force meeting
- Hawthorn Hills building repurposed as District's sole 4K Academy
- Further increases efficiency in delivery of 4K education
- Hawthorn Hills is in relatively newer building with A/C, “most suitable” learning spaces, and functional capacity for 381 elementary students (4K capacity may differ)
- Hawthorn Hills has one-road in and out and is on the east edge of the District, increasing distance between many 4K students and nearest 4K Academy





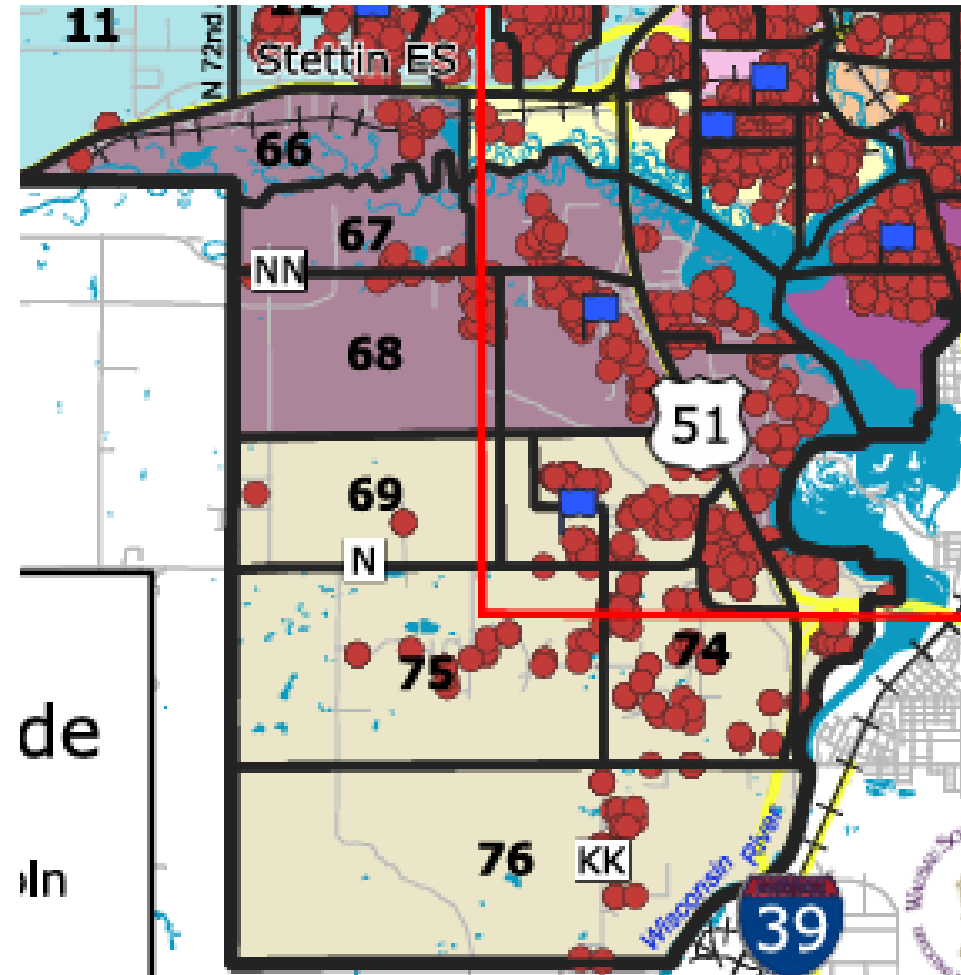
# Variation A – Single 4K Academy at Hawthorn Hills

- How Variation A would change Bundle 1:
  - Hawthorn Hills would replace both Lincoln and Riverview 4K Academies
  - Riverview would remain a 5K-5 school, while Lincoln building would close
  - Increases 10-year maintenance costs avoided from about \$4.1 to \$6.0 million (i.e., saves additional ~\$1.9 million in deferred maintenance costs)
- How Variation A would change Bundle 2:
  - Hawthorn Hills would replace G.D. Jones, Jefferson, and Riverview 4K Academies, with these three buildings remaining open as 5K-5 schools
  - G.D. Jones would decrease from 85% to about 60% of building capacity
  - Two buildings would close instead of three, increasing 10-year maintenance costs by around \$0.6 million and disabling annual operating cost savings of around \$200,000 to \$220,000



# Variation B – Rib Mountain to expanded South Mountain

- Potential addition to either Bundle 1 or Bundle 2
- Suggested by Task Force members at a few meetings, including when reviewing prior “Rib Mountain to South Mountain/G.D. Jones” option
- Feasible only with a classroom expansion at South Mountain



# Variation B – Rib Mountain to expanded South Mountain

## 1. Fiscal Responsibility

- Would require at least a 2-classroom addition at South Mountain (\$2+ million in 2024 dollars)
- South Mountain does not currently have a separate cafeteria and gym, so Variation B may suggest a new cafeteria and kitchen enhancements there at an estimated \$2.5-2.9 million cost
- Compared to base options, closing Rib Mountain would avoid an additional ~\$2.1 million in 10-year maintenance costs, save an additional \$160,000-180,000 in annual operating costs, and have between to \$540,000 to \$580,000 in annual staff expense reduction (after 3 yrs attrition)



# Variation B – Rib Mountain to expanded South Mountain

## 2. Efficient Building Utilization

School	Grades Served	Projected Enrollment		Building Capacity
		2027	2035	
EXPANDED South Mountain	5K-5	379	393	422-468
WSD ELEMENTARY TOTAL	4K Academies + 5K-5	3,268	3,196	3,566-3,962

- Expanded South Mountain building capacity (from current 373-414) assumes a 2-classroom addition, which would add 49-54 student capacity
- This variation added to either bundle would use 90% to 92% of the total elementary school building capacity in the District



# Variation B – Rib Mountain to expanded South Mountain

## 3. Maintain Educational Opportunities

- South Mountain built in 1997 with last addition/remodel in 2022; Rib Mountain built in 1955 with last addition/remodel in 1992
- Both schools now have “more suitable” learning spaces, medium/large sites, & A/C, but not separate gyms and cafeterias



# Variation B – Rib Mountain to expanded South Mountain

## 4. Minimize Impact on Students

- An additional 198 students would change attendance areas compared to base bundles (using current students)
- 34% of elementary students in modified Bundle 1 would change schools (compared to 28% in base Bundle 1)
- 20% of elementary students in modified Bundle 2 would change schools (compared to 15% in base Bundle 2)

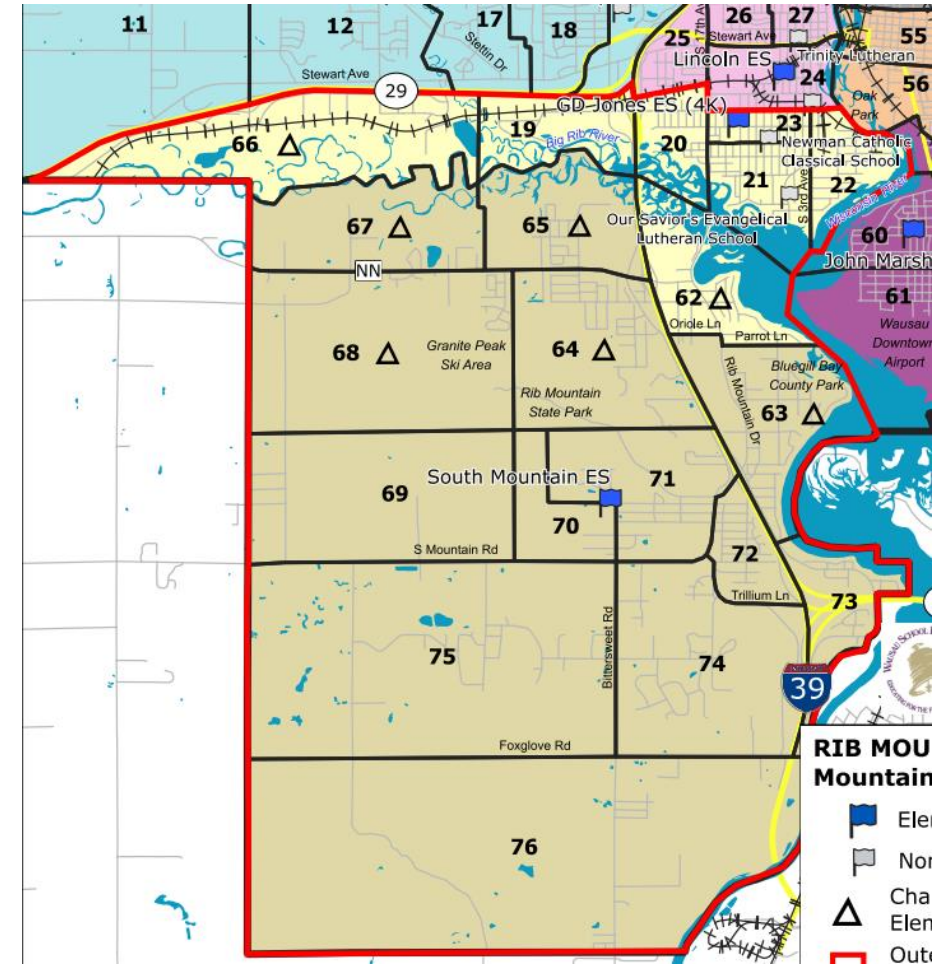
## 5. Schools Close to Students

- 10% of South Mountain's students would live within ½ mile, 29% within 1 mile, and 87% within 2 miles



# Variation C – Rib Mountain to South Mountain/G.D. Jones

- Revisitation of 10/9 option
- Received 5.8 preference rating (i.e., middle group) from Task Force members after 11/13 meeting
- Potential addition to Bundle 2 only
- In Bundle 1, Lincoln students would be shifted to G.D. Jones, not leaving enough room for some Rib Mountain students to also shift to G.D. Jones





# Variation C – Rib Mountain to South Mountain/G.D. Jones

PRIMARY CRITERION



Elementary Facility Option Evaluation Dashboard

RIB MOUNTAIN to South Mountain/G.D. Jones

10/9/24

Criterion 1: Fiscal Responsibility

10-year maintenance costs avoided	~\$2.1M
Annual operating cost reduction	\$160-\$180K
Staff expense reduction (through 3 yr attrition)	\$260-\$300K
State and federal funding impact (AGR/Title 1)	Low
Projected number of bus routes	Likely 2 more

CRITERION MET? Yes No Not Sure

MY NOTES:

Cost estimates are in 2024 dollars. Option could also yield one-time sale revenue.

Criterion 2: Efficient Building Utilization

School	2023-24 Enrollment	Projected Enrollment		Building Capacity
		2027	2035	
Rib Mountain	198	-	-	248-276
South Mountain	217	329	348	373-414
G.D. Jones (4K)	441	502	499	528-587

CRITERION MET? Yes No Not Sure

MY NOTES:

Enrollment per MDRoffers' projections; building capacity range per District.

Criterion 3: Maintain Educational Opportunities

School	Year built	Last addition/remodel	Site area	Separate gym & cafeteria?	A/C?	Learning space suitability
Rib Mountain	1955	1992	Medium		X	More Suitable
South Mountain	1997	2022	Large		X	More Suitable
G.D. Jones	1997	2016	Small	X	X	Most Suitable

CRITERION MET? Yes No Not Sure

MY NOTES:

Criterion 4: Minimize Impact on Students

Neighborhoods changing attendance areas	7 (10%)
2023-24 students changing attendance areas	198 (6%)
To South Mountain Elementary	133 (67%)
To G.D. Jones Elementary	65 (33%)
Impacts middle/high school attendance areas?	No

CRITERION MET? Yes No Not Sure

MY NOTES:

Criterion 5: Schools Close to Students

School	2023-24 elementary students living within...			2023-24 walking zone students assigned to this school	Longest estimated bus travel time	Preschool and wrap-around care providers within 1 mile
	¼ mile	1 mile	2 miles			
South Mountain	12%	29%	83%	97	25-30 min	3
G.D. Jones	34%	56%	67%	41	25-30 min	3

CRITERION MET? Yes No Not Sure

MY NOTES:

This dashboard is NOT a proposal for attendance area adjustments or consolidation. Instead, it is intended to aid the Task Force in evaluating one of several potential options for how elementary schools and attendance areas could potentially be adjusted to satisfy these five option evaluation criteria. If ultimately recommended, this option could be combined with others. The October 9, 2024 Task Force meeting presentation provides more information on the methodologies for calculating metrics presented in this dashboard.



# Review of Bundle 1 and its Potential Variations

- Bundle 1
  - Hewitt-Texas to Riverview (also serving as east side's 4K Academy)
  - Hawthorn Hills to John Marshall/Franklin
  - Lincoln to G.D. Jones (with G.D. Jones no longer 4K Academy)
  - Grant to Jefferson (with Jefferson no longer 4K Academy)
  - Lincoln repurposed as west side's 4K Academy
- Bundle 1 + Variation A
  - Bundle 1, except single 4K Academy at Hawthorn Hills instead of Lincoln and Riverview 4K Academies
- Bundle 1 + Variation B
  - Bundle 1, plus Rib Mountain to expanded South Mountain option



# Review of Bundle 2 and its Potential Variations

- Bundle 2
  - Hewitt-Texas to Riverview (also serving as east side's 4K Academy)
  - Hawthorn Hills to John Marshall/Franklin
  - Grant to Jefferson/Lincoln
- Bundle 2 + Variation A
  - Bundle 2, plus single 4K Academy at Hawthorn Hills instead of G.D Jones, Jefferson, and Riverview 4K Academies
- Bundle 2 + Variation B
  - Bundle 2, plus Rib Mountain to expanded South Mountain option
- Bundle 2 + Variation C
  - Bundle 2, plus Rib Mountain to South Mountain/G.D. Jones option



# Instructions for Group Discussions

- Review bundles/variations handout
- Select facilitator, recorder, reporter
- Go round-robin, with the recorder writing **pros and cons of each bundle and variation** on top of flip-chart—to be used to support and explain the Task Force's recommendation
- Within 1-2 minutes per small group, each reporter shares pros and cons
- Large group discussion



# Other Potential Task Force Recommendations

Does the Task Force wish to advise the School Board to address as many of the 10-year deferred maintenance items in the CESA 10 Elementary Facilities Assessment as possible, both at recommended “receiver” schools and at other elementary schools that will remain following consolidation?

**Any questions?**  
**Show of hands for “YES”.**

**On 12/4, received majority support from Task Force members**



# Other Potential Task Force Recommendations

Does the Task Force wish to advise that each “receiver” school in the selected bundle be improved with air conditioning if not already present?

**Any questions?  
Show of hands for “YES”.**

**On 12/4, received majority support from Task Force members**



# Other Potential Task Force Recommendations

Does the Task Force wish to advise the School Board to undertake a separate process to finalize new elementary school attendance areas, once the Board selects an elementary facility bundle?

**Any questions?  
Show of hands for “YES”.**

**On 12/4, received majority support from Task Force members**



# Other Potential Task Force Recommendations

Does the Task Force wish to ask the School Board to consider relocating its administrative functions currently at the Longfellow Administrative Center to one of its other remaining facilities, such as a high or middle school with excess capacity?

**Any questions?  
Show of hands for “YES”.**

**On 12/4, received majority support from Task Force members**



# Other Potential Task Force Recommendations

Does the Task Force wish to advise the School Board to work with the City and others to maintain a park/playground at the Grant site to serve the surrounding neighborhood, even if the building is otherwise sold and repurposed?

**Any questions?  
Show of hands for “YES”.**

**On 12/4, received majority support from Task Force members**





# Other Potential Task Force Recommendations

Does the Task Force wish to advise the School Board to consider repurposing Hawthorn Hills for other school district or related needs serving children, including before and after school care?

**Any questions?  
Show of hands for “YES”.**

**On 12/4, did NOT receive majority support from Task Force members**



# Task Force Member Voting on Bundles/Variations

- Referring to the same option evaluation criteria as always, please write:
  - A “#1” next to your most preferred bundle/variation that you think should be recommended to the Board
  - A “#2” next to your second most preferred bundle/variation that you think should be recommended to the Board, after #1
- Turn in your form to Nick when done; he will tally them up while we move forward

---

## **Bundle 1**

Hewitt-Texas to Riverview (including east side 4K Academy); Hawthorn Hills to John Marshall/Franklin; Lincoln to G.D. Jones; Grant to Jefferson; Lincoln repurposed as west side 4K Academy

---

## **Bundle 1 + Variation A**

Bundle 1, except single 4K Academy at Hawthorn Hills instead of Lincoln and Riverview 4K Academies

---

## **Bundle 1 + Variation B**

Bundle 1, plus Rib Mountain to expanded South Mountain option

---

## **Bundle 2**

Hewitt-Texas to Riverview; Hawthorn Hills to John Marshall/Franklin; Grant to Jefferson/Lincoln

---

## **Bundle 2 + Variation A**

Bundle 2, plus single 4K Academy at Hawthorn Hills instead of G.D Jones, Jefferson, and Riverview 4K Academies

---

## **Bundle 2 + Variation B**

Bundle 2, plus Rib Mountain to expanded South Mountain option

---

## **Bundle 2 + Variation C**

Bundle 2, plus Rib Mountain to South Mountain/G.D. Jones option



# Task Force Member Voting on Bundles/Variations

- 35 Task Force members voted, a simple majority is 18 votes
- Remember this Task Force member commitment: “Offer recommendations and make decisions as a whole task force—using consensus where possible and voting where necessary—and respect recommendations once made”
- Remember this Task Force charge component: “Recommend one or two preferred elementary school facility options”, which we now interpret as bundles/variations



# Task Force Member Voting on Bundles/Variations

25	5
----	---

**Bundle 1:** Hewitt-Texas to Riverview (including east side 4K Academy); Hawthorn Hills to John Marshall/Franklin; Lincoln to G.D. Jones; Grant to Jefferson; Lincoln repurposed as west side 4K Academy

0	0
---	---

**Bundle 1 + Variation A:** Bundle 1, except single 4K Academy at Hawthorn Hills instead of Lincoln and Riverview 4K Academies

2	6
---	---

**Bundle 1 + Variation B:** Bundle 1, plus Rib Mountain to expanded South Mountain option

3	17
---	----

**Bundle 2:** Hewitt-Texas to Riverview; Hawthorn Hills to John Marshall/Franklin; Grant to Jefferson/Lincoln

0	0
---	---

**Bundle 2 + Variation A:** Bundle 2, plus single 4K Academy at Hawthorn Hills instead of G.D Jones, Jefferson, and Riverview 4K Academies

4	0
---	---

**Bundle 2 + Variation B:** Bundle 2, plus Rib Mountain to expanded South Mountain option

0	2
---	---

**Bundle 2 + Variation C:** Bundle 2, plus Rib Mountain to South Mountain/G.D. Jones option

**LEGEND:**

XX: Number of #1 Votes for Bundle/Variation	XX: Number of #2 Votes for Bundle/Variation
---	---



# Other Potential Task Force Recommendations

Does the Task Force wish to advise the School Board on phasing of facility consolidation options within the recommended bundle(s)?

**Any questions?  
Show of hands for “YES”.**

If “yes”, let’s discuss how...

**On 12/4, did NOT receive majority support from Task Force members**



# Other Potential Task Force Recommendations

Does the Task Force wish to advise the School Board on possible future actions/trigger points beyond the actions advised under in the recommended bundle?

**Any questions?**

**Show of hands for “YES”.**

If “yes”, let’s discuss what...

**On 12/4, received majority support from Task Force members  
Specifically, keeping an eye on Rib Mountain and South Mountain enrollment,  
with a potential consolidation of these two schools at some point in the future**



# Next Steps

- Consultant will package Task Force recommendations in a presentation to the Board, supplemented by final dashboards for the individual facility consolidation options in the recommended bundle(s)
- Presentation of recommendation to Board at its 12/9 meeting (5 p.m., Longfellow), with further discussion and requested direction at a future Board meeting (date, time, location = TBD)
- Please attend this meeting or the future Board meeting
- Consultant will prepare summary/support points for Task Force members, remembering that your charge remains to “serve as factual ‘key communicators’ to and from the District community during the process”



## A final word...

**THANK YOU** Task Force members for your time and energy over the past several months to make this process efficient and successful!



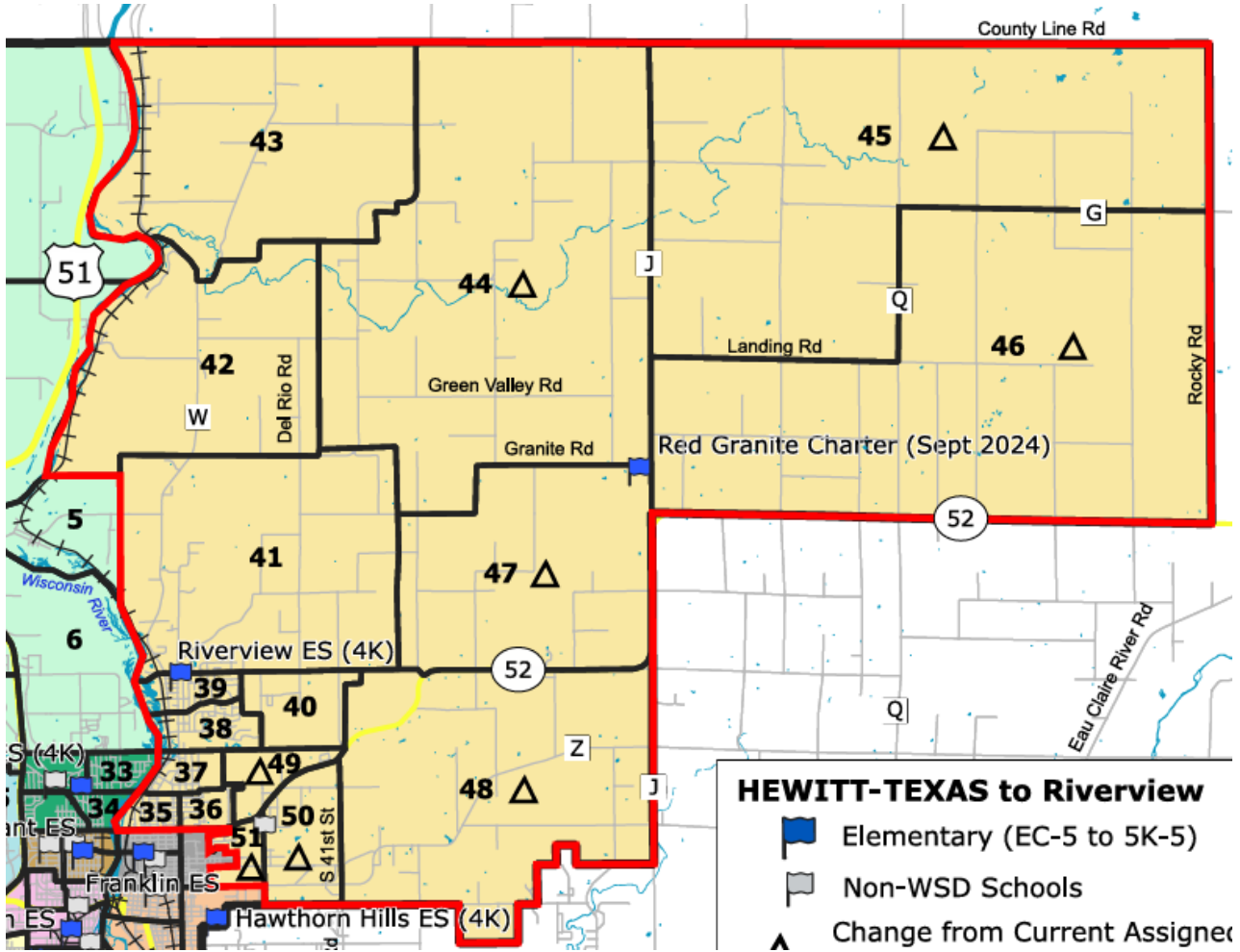


# Facility Option Review



# Hewitt-Texas to Riverview

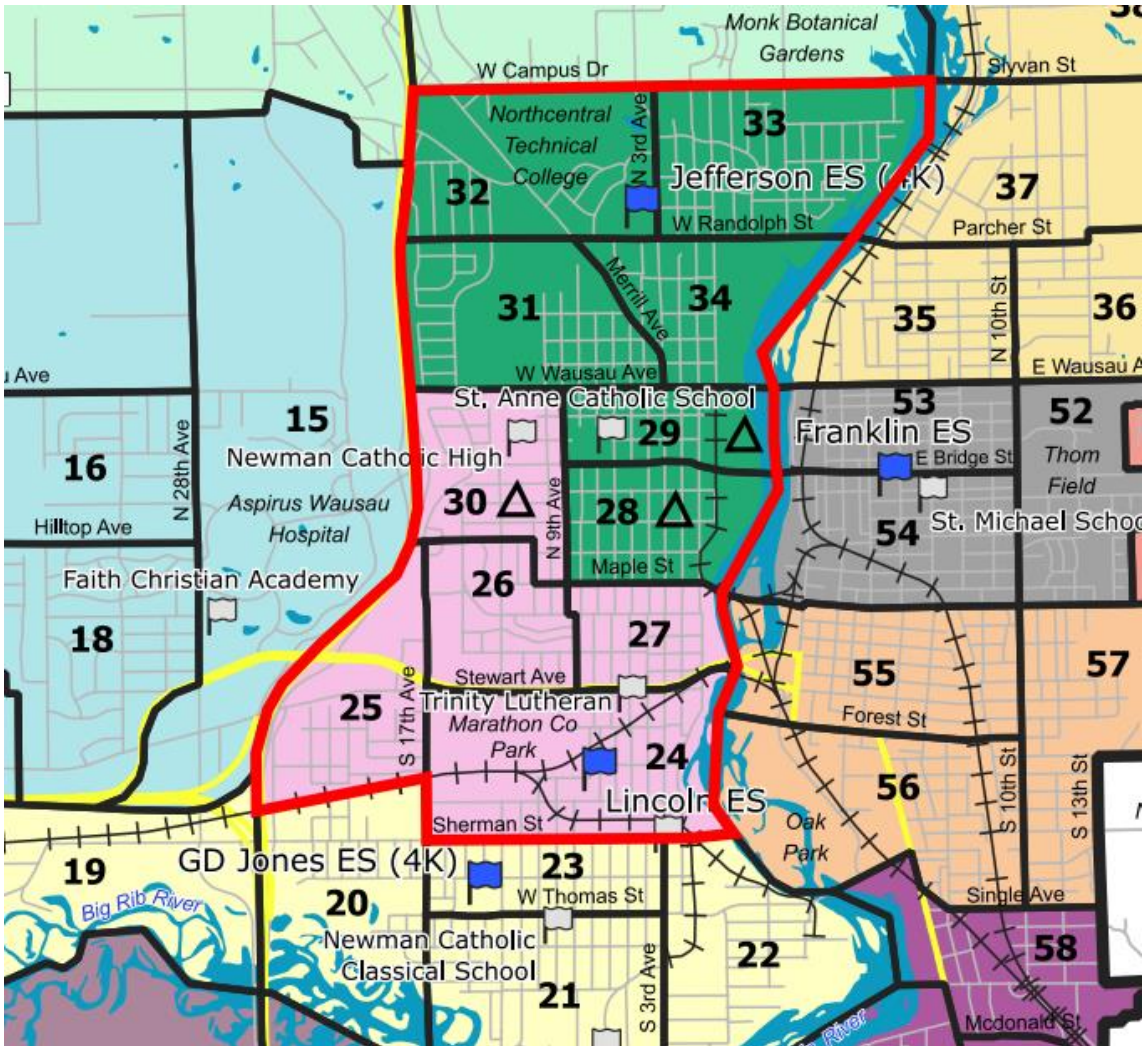
## Task Force 10/9 Review and Response to Option



<b>Criterion 1: Fiscal Responsibility</b>	Yes: <b>28</b> No: <b>2</b> Not Sure: <b>3</b>
<b>Criterion 2: Efficient Building Utilization</b>	Yes: <b>29</b> No: <b>0</b> Not Sure: <b>4</b>
<b>Criterion 3: Maintain Educational Opportunities</b>	Yes: <b>29</b> No: <b>4</b> Not Sure: <b>0</b>
<b>Criterion 4: Minimize Impact on Students</b>	Yes: <b>29</b> No: <b>0</b> Not Sure: <b>4</b>
<b>Criterion 5: Schools Close to Students</b>	Yes: <b>26</b> No: <b>5</b> Not Sure: <b>2</b>



# Grant to Jefferson/Lincoln



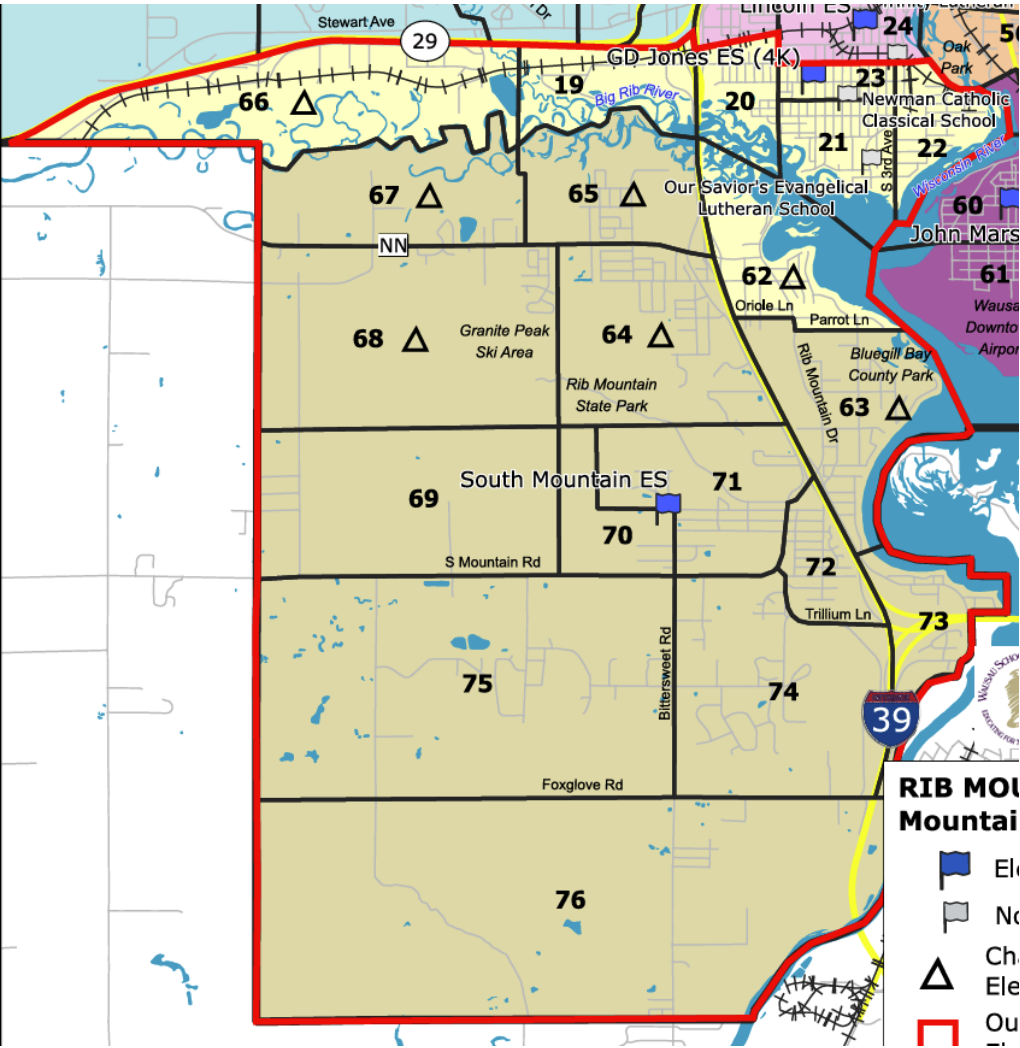
## Task Force 10/9 Review and Response to Option

Criterion 1: Fiscal Responsibility	Yes: 33 No: 0 Not Sure: 0
Criterion 2: Efficient Building Utilization	Yes: 28 No: 0 Not Sure: 5
Criterion 3: Maintain Educational Opportunities	Yes: 23 No: 5 Not Sure: 5
Criterion 4: Minimize Impact on Students	Yes: 28 No: 1 Not Sure: 4
Criterion 5: Schools Close to Students	Yes: 33 No: 0 Not Sure: 0



# Rib Mountain to South Mountain and G.D. Jones

## Task Force 10/9 Review and Response to Option

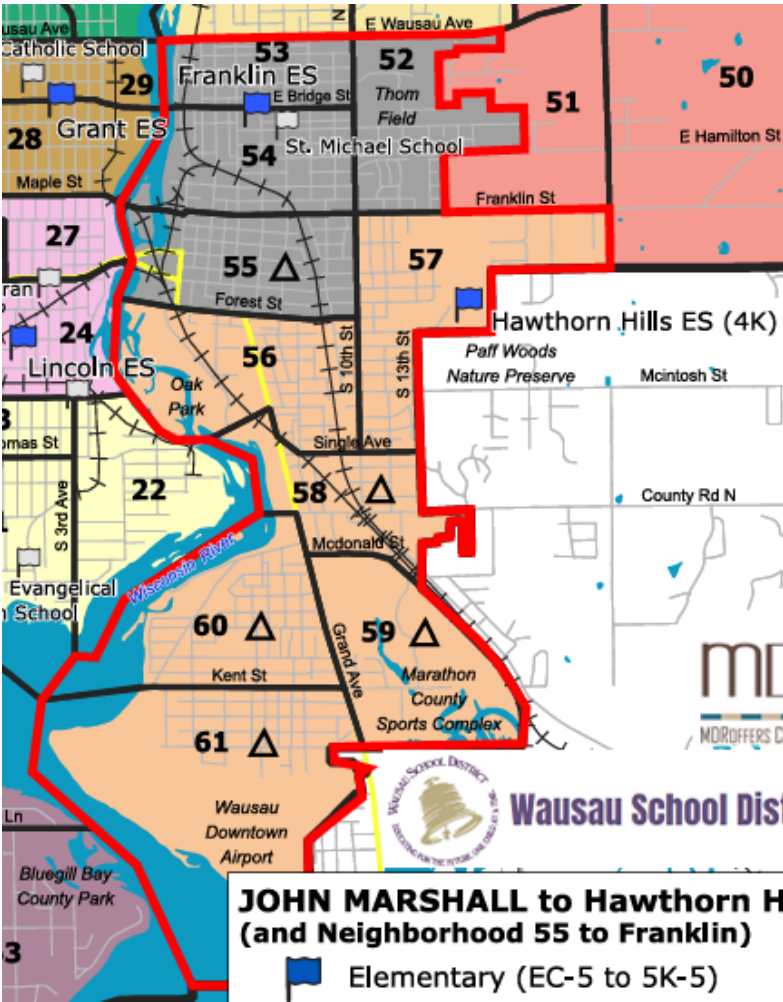


Criterion 1: Fiscal Responsibility	Yes: 28 No: 2 Not Sure: 3
Criterion 2: Efficient Building Utilization	Yes: 21 No: 1 Not Sure: 11
Criterion 3: Maintain Educational Opportunities	Yes: 18 No: 2 Not Sure: 13
Criterion 4: Minimize Impact on Students	Yes: 14 No: 5 Not Sure: 11
Criterion 5: Schools Close to Students	Yes: 19 No: 5 Not Sure: 6





# John Marshall to Hawthorn Hills\*



\* Plus neighborhood 55 from Hawthorn Hills to Franklin

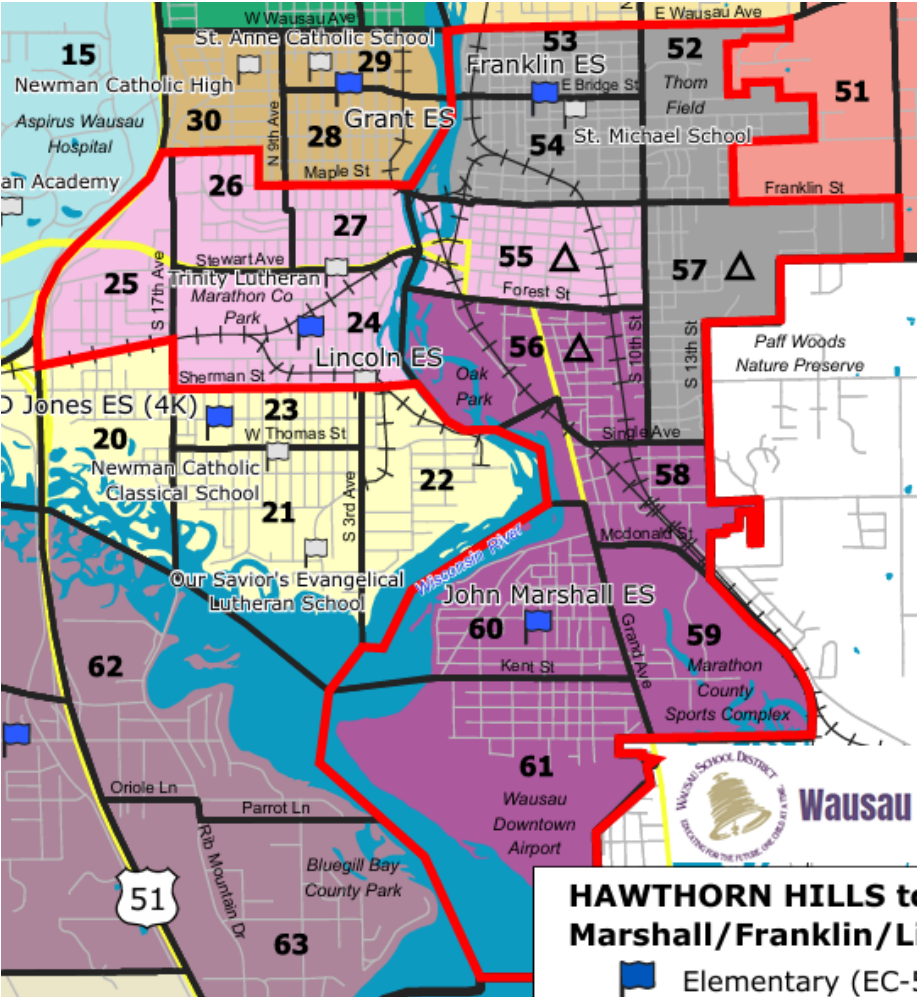
## Task Force 10/30 Review and Response to Option

Criterion 1: Fiscal Responsibility	Yes: 33 No: 0 Not Sure: 6
Criterion 2: Efficient Building Utilization	Yes: 26 No: 3 Not Sure: 10
Criterion 3: Maintain Educational Opportunities	Yes: 17 No: 6 Not Sure: 16
Criterion 4: Minimize Impact on Students	Yes: 16 No: 9 Not Sure: 14
Criterion 5: Schools Close to Students	Yes: 17 No: 16 Not Sure: 6



# Hawthorn Hills to John Marshall/Franklin/Lincoln\*

## Task Force 10/30 Review and Response to Option



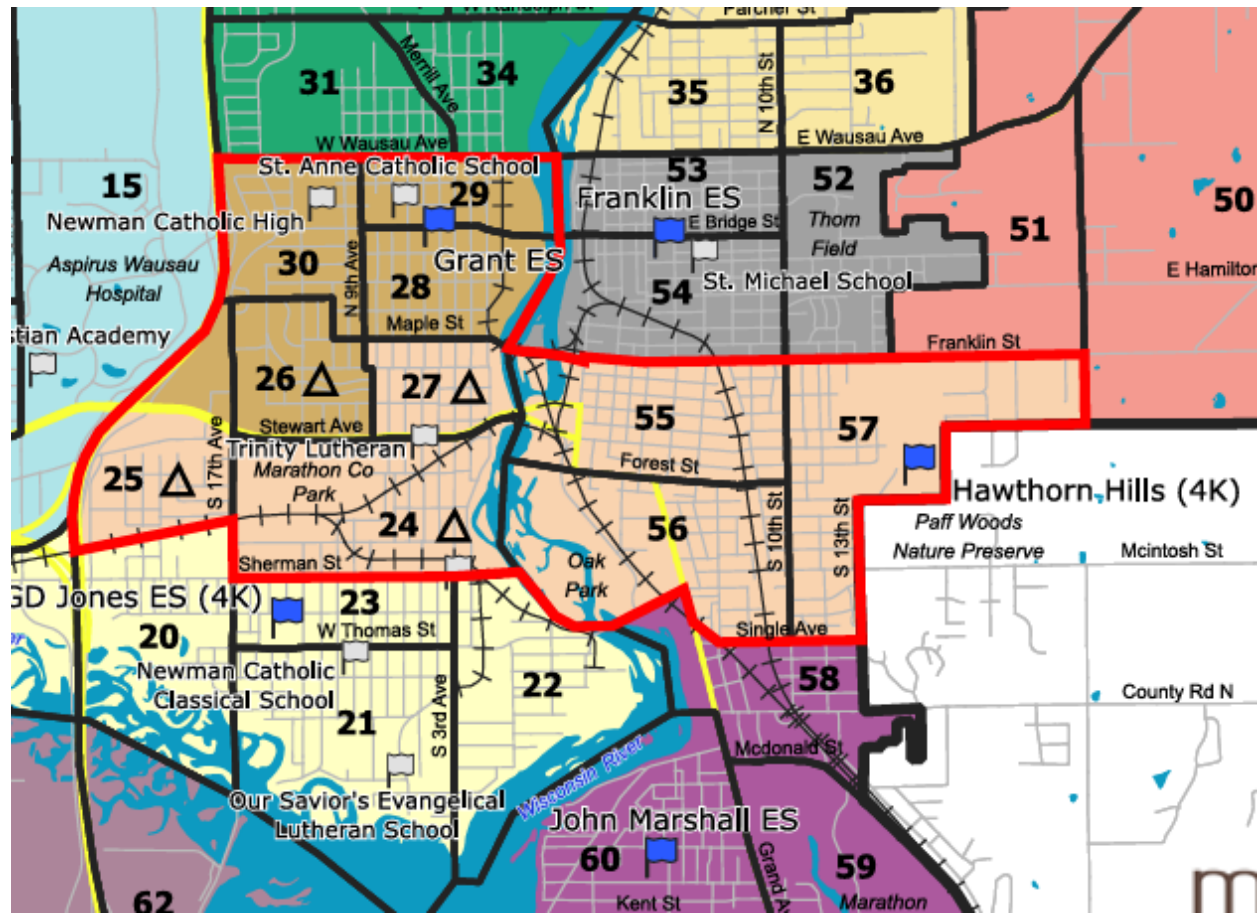
\* Plus 4K students shifting to Riverview

Criterion 1: Fiscal Responsibility	Yes: 16 No: 10 Not Sure: 13
Criterion 2: Efficient Building Utilization	Yes: 14 No: 9 Not Sure: 16
Criterion 3: Maintain Educational Opportunities	Yes: 6 No: 21 Not Sure: 12
Criterion 4: Minimize Impact on Students	Yes: 6 No: 29 Not Sure: 4
Criterion 5: Schools Close to Students	Yes: 26 No: 8 Not Sure: 5



# Lincoln to Grant/Hawthorn Hills

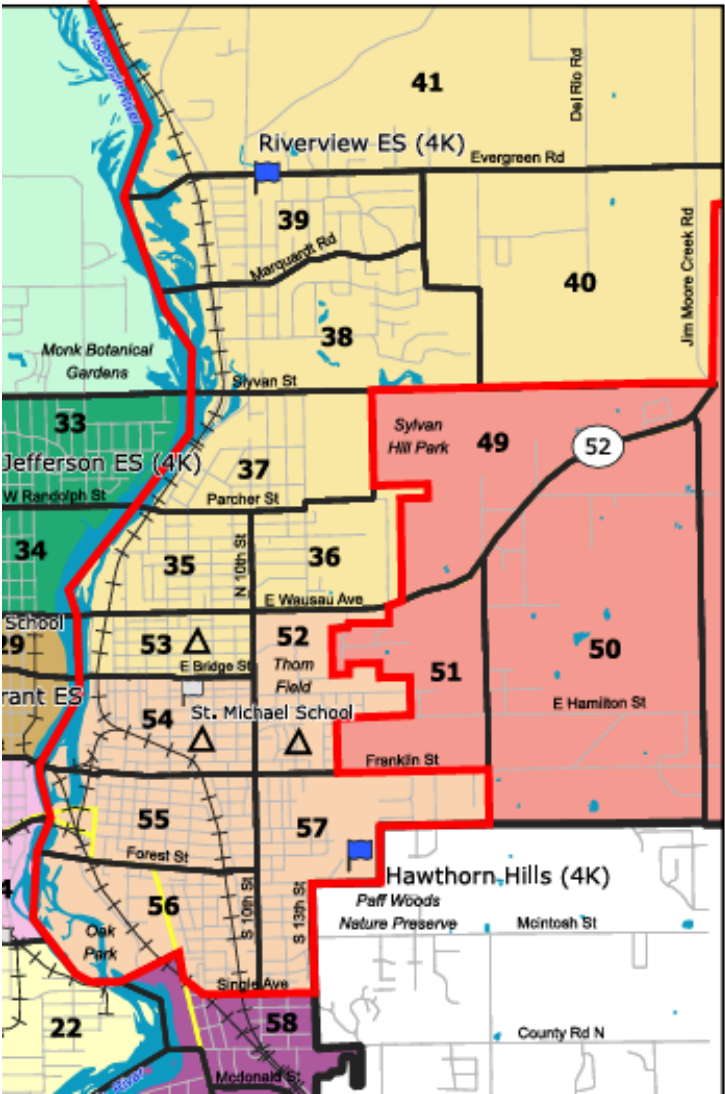
## Task Force 10/30 Review and Response to Option



Criterion 1: Fiscal Responsibility	Yes: 1 No: 28 Not Sure: 10
Criterion 2: Efficient Building Utilization	Yes: 22 No: 12 Not Sure: 5
Criterion 3: Maintain Educational Opportunities	Yes: 0 No: 27 Not Sure: 12
Criterion 4: Minimize Impact on Students	Yes: 0 No: 37 Not Sure: 2
Criterion 5: Schools Close to Students	Yes: 7 No: 24 Not Sure: 8



# Franklin to Hawthorn Hills/Riverview



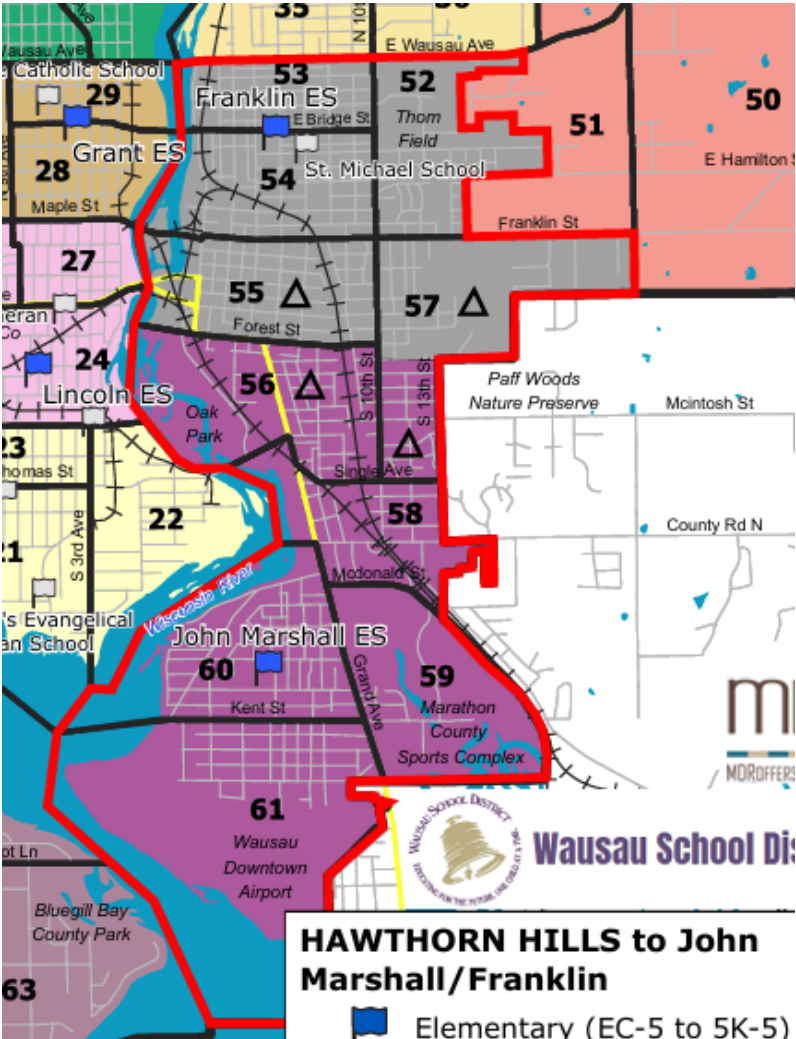
## Task Force 10/30 Review and Response to Option

Criterion 1: Fiscal Responsibility	Yes: <b>11</b> No: <b>23</b> Not Sure: <b>5</b>
Criterion 2: Efficient Building Utilization	Yes: <b>32</b> No: <b>0</b> Not Sure: <b>7</b>
Criterion 3: Maintain Educational Opportunities	Yes: <b>30</b> No: <b>1</b> Not Sure: <b>8</b>
Criterion 4: Minimize Impact on Students	Yes: <b>22</b> No: <b>11</b> Not Sure: <b>6</b>
Criterion 5: Schools Close to Students	Yes: <b>11</b> No: <b>23</b> Not Sure: <b>5</b>





# Hawthorn Hills to John Marshall/Franklin\*



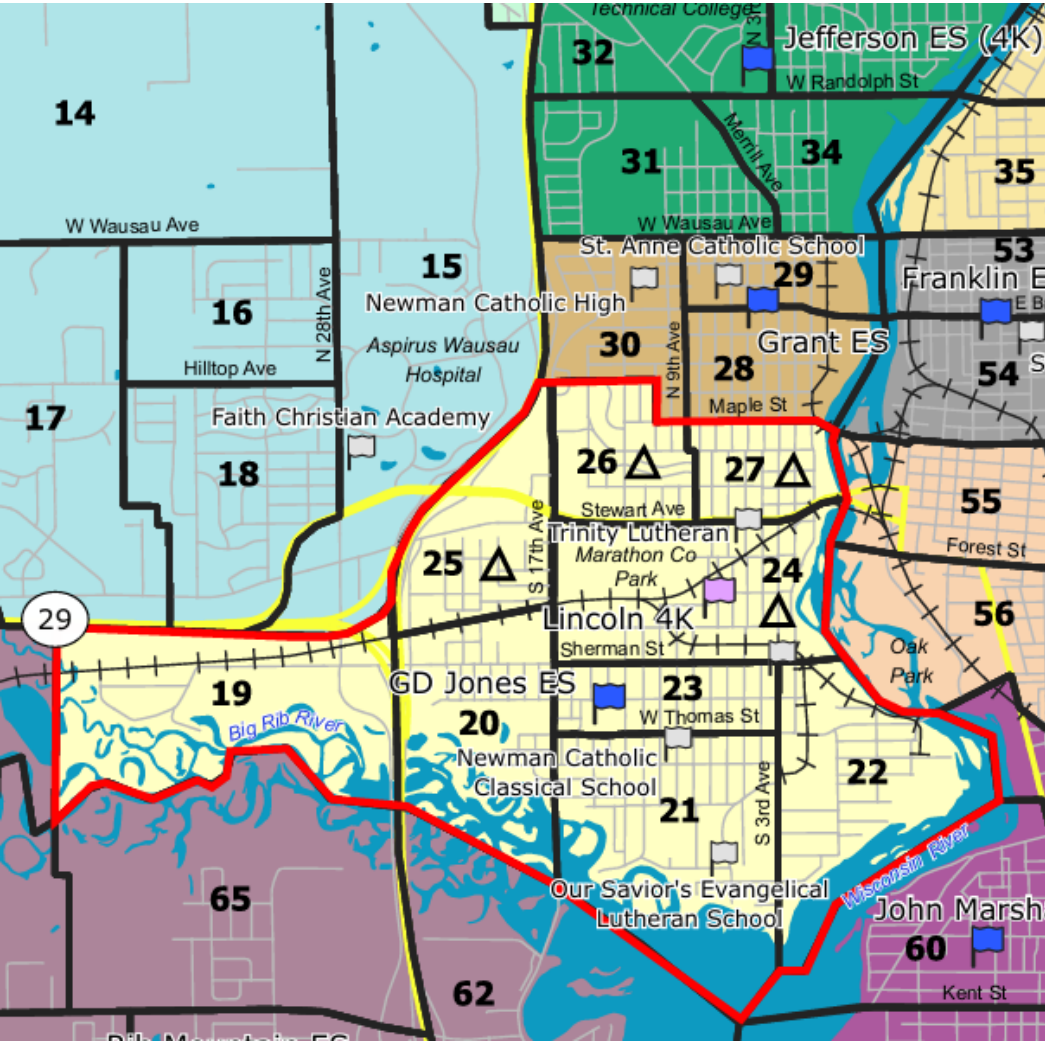
\* Plus 4K students shifting to Riverview

## Task Force 11/13 Review and Response to Option

Criterion 1: Fiscal Responsibility	Yes: <b>19</b> No: <b>2</b> Not Sure: <b>12</b>
Criterion 2: Efficient Building Utilization	Yes: <b>30</b> No: <b>0</b> Not Sure: <b>3</b>
Criterion 3: Maintain Educational Opportunities	Yes: <b>12</b> No: <b>9</b> Not Sure: <b>12</b>
Criterion 4: Minimize Impact on Students	Yes: <b>30</b> No: <b>1</b> Not Sure: <b>2</b>
Criterion 5: Schools Close to Students	Yes: <b>32</b> No: <b>0</b> Not Sure: <b>1</b>



# Lincoln to G.D. Jones\*



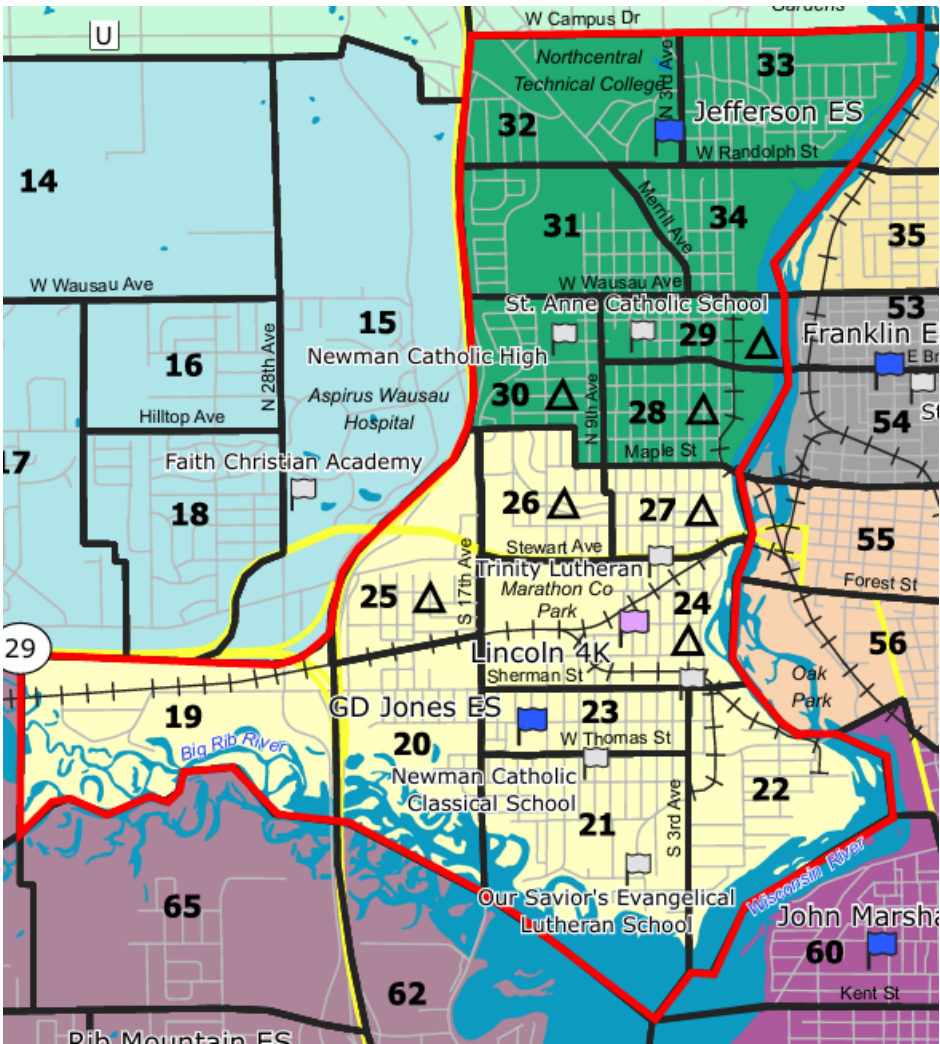
\* Plus 4K Academy relocating from G.D. Jones to Lincoln

## Task Force 11/13 Review and Response to Option

Criterion 1: Fiscal Responsibility	Yes: 22 No: 0 Not Sure: 11
Criterion 2: Efficient Building Utilization	Yes: 30 No: 0 Not Sure: 3
Criterion 3: Maintain Educational Opportunities	Yes: 33 No: 0 Not Sure: 0
Criterion 4: Minimize Impact on Students	Yes: 33 No: 0 Not Sure: 0
Criterion 5: Schools Close to Students	Yes: 33 No: 0 Not Sure: 0



# Grant to Jefferson\*



## Task Force 11/13 Review and Response to Option

Criterion 1: Fiscal Responsibility	Yes: 32 No: 0 Not Sure: 1
Criterion 2: Efficient Building Utilization	Yes: 33 No: 0 Not Sure: 0
Criterion 3: Maintain Educational Opportunities	Yes: 33 No: 0 Not Sure: 0
Criterion 4: Minimize Impact on Students	Yes: 33 No: 0 Not Sure: 0
Criterion 5: Schools Close to Students	Yes: 33 No: 0 Not Sure: 0

\* Plus 4K Academy relocating from Jefferson to Lincoln

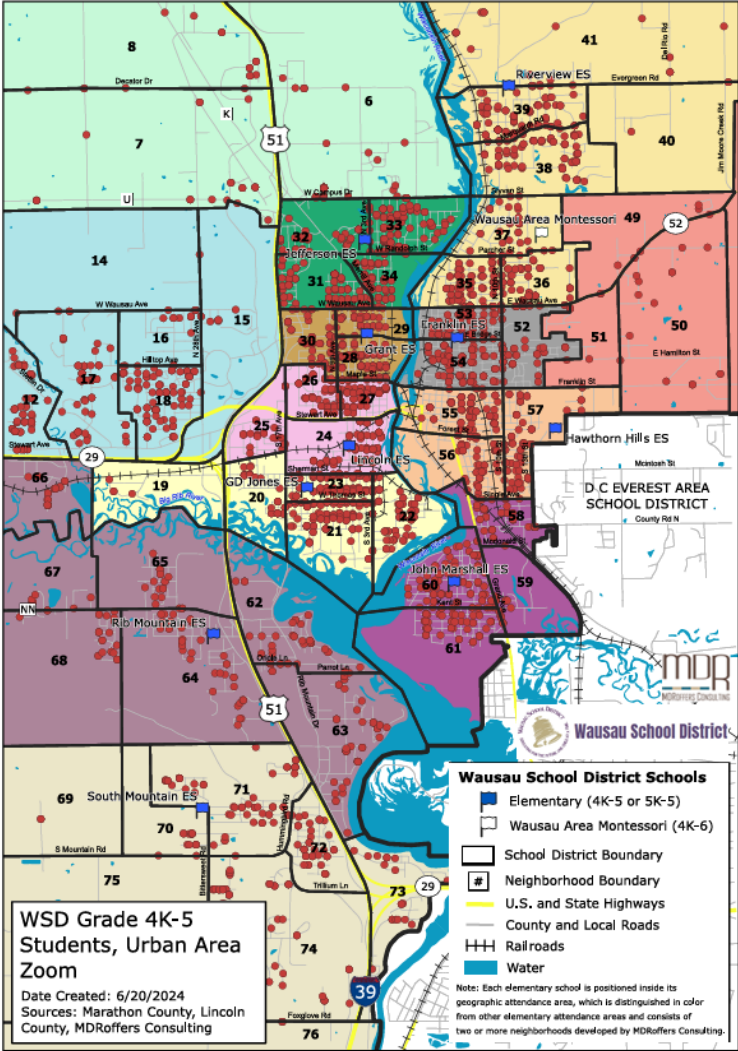
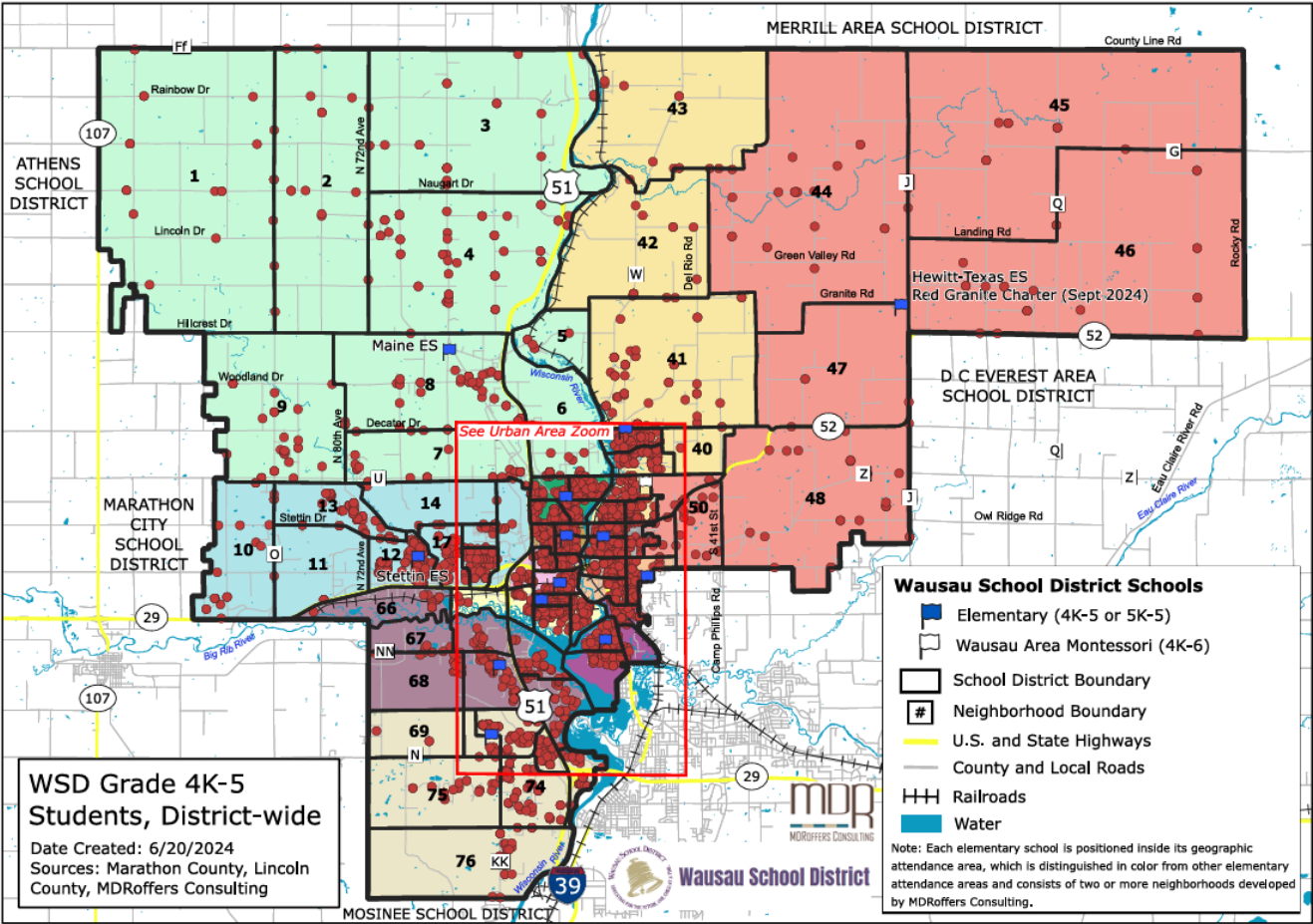


# Other Support Materials





# Current Attendance Area/Student Dot Maps



# Other School Conditions Information

- Generally, the newer the school, the more likely it was designed with possible future expansion in mind
- All schools currently have some accessible play equipment
- Most any school with room has ability to provide sensory spaces
- Production kitchens at Riverview, Jefferson, Hewitt-Texas, Maine, and Rib Mountain; serving kitchens at other buildings
- Most any option will require some improvements to make building(s) and system functional for new/expanded purpose





## Evaluation of Broad Elementary School Closure Scenarios

### Elementary Facility Plan Citizen Task Force

Close No Schools (13 remain)	Close 1 School (12 remain)	Close 2 Schools (11 remain)	Close 3 Schools (10 remain)	Close 4 Schools (9 remain)
<b>Criterion 1 Fiscal Responsibility</b> <ul style="list-style-type: none"><li>• \$118 million operating budget</li><li>• Projected \$2.5 million deficit by 2027</li><li>• No savings through building closure</li></ul> <b>Criterion 2 Efficient Building Utilization</b> <ul style="list-style-type: none"><li>• Avg 2027 per-school enrollment: 248</li><li>• Avg 2027 building utilization: 71%</li><li>• Elementary building capacities:4,550</li></ul> <b>Criterion 3 Maintain Educational Opportunities</b> <ul style="list-style-type: none"><li>• 6 AGR schools maintained</li><li>• Avg 2 sections per grade per school</li><li>• Unbalanced class sizes among schools</li><li>• Same traveling staff among schools</li><li>• No "collaborative &amp; safe" environment changes</li></ul> <b>Criterion 4 Minimize Impact on Students</b> <ul style="list-style-type: none"><li>• No students would change schools</li></ul> <b>Criterion 5 Schools Close to Students</b> <ul style="list-style-type: none"><li>• 5 east side schools remain open</li><li>• 8 west side schools remain open</li></ul> <b>My Notes</b>	<b>Criterion 1 Fiscal Responsibility</b> <ul style="list-style-type: none"><li>• \$150-\$200K less in annual operating expenses (not including staff)</li><li>• \$300-\$350K less in annual staff expenses through attrition (by year 3)</li></ul> <b>Criterion 2 Efficient Building Utilization</b> <ul style="list-style-type: none"><li>• Avg 2027 per-school enrollment: 269</li><li>• Avg 2027 building utilization: 77%</li><li>• Elementary building capacities:4,200</li></ul> <b>Criterion 3 Maintain Educational Opportunities</b> <ul style="list-style-type: none"><li>• Likely to maintain 6 AGR schools</li><li>• Likely avg 2 grade sections/school</li><li>• Unbalanced class sizes among schools</li><li>• Similar traveling staff among schools</li><li>• Marginal "collaborative &amp; safe" improvements thru closure choice</li></ul> <b>Criterion 4 Minimize Impact on Students</b> <ul style="list-style-type: none"><li>• ~250 students (8%) change schools</li><li>• 1-to-1 school consolidation possible</li></ul> <b>Criterion 5 Schools Close to Students</b> <ul style="list-style-type: none"><li>• 4-5 east side schools remain open</li><li>• 7-8 west side schools remain open</li></ul> <b>My Notes</b>	<b>Criterion 1 Fiscal Responsibility</b> <ul style="list-style-type: none"><li>• \$300-\$400K less in annual operating expenses (not including staff)</li><li>• \$600-\$700K less in annual staff expenses through attrition (by year 3)</li></ul> <b>Criterion 2 Efficient Building Utilization</b> <ul style="list-style-type: none"><li>• Avg 2027 per-school enrollment: 293</li><li>• Avg 2027 building utilization: 84%</li><li>• Elementary building capacities:3,850</li></ul> <b>Criterion 3 Maintain Educational Opportunities</b> <ul style="list-style-type: none"><li>• Likely to maintain 6 AGR schools</li><li>• Avg 2-3 grade sections/school</li><li>• Somewhat more balanced class sizes</li><li>• Fewer travelling staff among schools</li><li>• Some "collaborative &amp; safe" improvements thru closure choices</li></ul> <b>Criterion 4 Minimize Impact on Students</b> <ul style="list-style-type: none"><li>• ~500 students (16%) change schools</li><li>• 1-to-1 school consolidation possible</li></ul> <b>Criterion 5 Schools Close to Students</b> <ul style="list-style-type: none"><li>• 3-4 east side schools remain open</li><li>• 7-8 west side schools remain open</li></ul> <b>My Notes</b>	<b>Criterion 1 Fiscal Responsibility</b> <ul style="list-style-type: none"><li>• \$450-\$600K less in annual operating expenses (not including staff)</li><li>• \$900K-\$1M less in annual staff expenses through attrition (by year 3)</li></ul> <b>Criterion 2 Efficient Building Utilization</b> <ul style="list-style-type: none"><li>• Avg 2027 per-school enrollment: 323</li><li>• Avg 2027 building utilization: 92%</li><li>• Elementary building capacities:3,500</li></ul> <b>Criterion 3 Maintain Educational Opportunities</b> <ul style="list-style-type: none"><li>• Probable to maintain 6 AGR schools</li><li>• Likely avg 3 grade sections/school</li><li>• More balanced class sizes with capacity challenges emerging</li><li>• Fewer travelling staff among schools</li><li>• Greater "collaborative &amp; safe" improvements thru closure choices</li></ul> <b>Criterion 4 Minimize Impact on Students</b> <ul style="list-style-type: none"><li>• ~750 students (23%) change schools</li><li>• 1-to-1 school consolidation more challenging</li></ul> <b>Criterion 5 Schools Close to Students</b> <ul style="list-style-type: none"><li>• 3-4 east side schools remain open</li><li>• 6-7 west side schools remain open</li></ul> <b>My Notes</b>	<b>Criterion 1 Fiscal Responsibility</b> <ul style="list-style-type: none"><li>• \$600-\$800K less in annual operating expenses (not including staff)</li><li>• \$1.2-\$1.4M less in annual staff expenses through attrition (by year 3)</li></ul> <b>Criterion 2 Efficient Building Utilization</b> <ul style="list-style-type: none"><li>• Avg 2027 ES Enrollment: 358</li><li>• Avg 2027 building utilization: 102%</li><li>• Elementary building capacities:3,150</li></ul> <b>Criterion 3 Maintain Educational Opportunities</b> <ul style="list-style-type: none"><li>• Challenge to maintain 6 AGR schools</li><li>• Avg 3 sections per grade per school</li><li>• More balanced but some overpopulated classes</li><li>• Fewer travelling staff among schools</li><li>• Even more "collaborative &amp; safe" improvements thru closure choices</li></ul> <b>Criterion 4 Minimize Impact on Students</b> <ul style="list-style-type: none"><li>• ~1,000 students (31%) change schools</li><li>• 1-to-1 consolidation improbable</li></ul> <b>Criterion 5 Schools Close to Students</b> <ul style="list-style-type: none"><li>• 3-4 east side schools remain open</li><li>• 5-6 west side schools remain open</li></ul> <b>My Notes</b>



# Class Size Guidelines



Overall, elementary class size, as of today, averages 19.3 students per classroom



Class sizes vary significantly by building and grade levels as a result of where our families live



Class sizes in AGR schools for K-3 is capped at 18



The District's class size guideline maximums by grade are as follows:

- Kindergarten - Grade 1: 25
- Grades 2-3: 27
- Grades 4-5: 29



**LEARN. ACHIEVE. SUCCEED.**





# Current Financial Position

- ▶ 24-25 budget deficit of \$1.5 million
- ▶ Five Year Forecast:

	BUDGET FY - 2024	FY - 2025	% Δ	FY - 2026	% Δ	FY - 2027	% Δ	FY - 2028	% Δ	FY - 2029
REVENUE										
Local Sources	\$25,196,122	\$23,220,746	▼ -7.84%	\$21,416,046	▼ -7.77%	\$21,135,703	▼ -1.31%	\$20,794,902	▼ -1.61%	\$20,419,751
State Sources	\$78,988,343	\$83,621,520	▲ 5.87%	\$87,656,405	▲ 4.83%	\$90,725,957	▲ 3.50%	\$93,680,439	▲ 3.26%	\$96,654,183
Federal Sources	\$10,472,670	\$4,163,041	▼ -60.25%	\$3,970,795	▼ -4.62%	\$3,970,795	0.00%	\$3,970,795	0.00%	\$3,970,795
Other	\$2,771,139	\$2,915,924	▲ 5.22%	\$2,975,900	▲ 2.06%	\$3,051,500	▲ 2.54%	\$3,127,100	▲ 2.48%	\$3,177,500
TOTAL REVENUE	\$117,428,274	\$113,921,231	▼ -2.99%	\$116,019,146	▲ 1.84%	\$118,883,955	▲ 2.47%	\$121,573,236	▲ 2.26%	\$124,222,229
EXPENDITURES										
Salary and Benefits	\$78,363,438	\$78,245,561	▼ -0.15%	\$80,098,988	▲ 2.37%	\$82,013,604	▲ 2.39%	\$83,991,476	▲ 2.41%	\$86,030,199
Other Objects	\$39,780,895	\$37,159,696	▼ -6.59%	\$38,354,451	▲ 3.22%	\$39,026,020	▲ 1.75%	\$39,734,966	▲ 1.82%	\$40,412,325
TOTAL EXPENDITURES	\$118,144,332	\$115,405,257	▼ -2.32%	\$118,453,439	▲ 2.64%	\$121,039,625	▲ 2.18%	\$123,726,442	▲ 2.22%	\$126,442,525
SURPLUS / DEFICIT	(\$716,058)	(\$1,484,026)		(\$2,434,293)		(\$2,155,669)		(\$2,153,205)		(\$2,220,295)
Change over Previous Year		(\$767,968)		(\$950,267)		\$278,624		\$2,464		(\$67,090)
BEGINNING FUND BALANCE	\$32,288,574	\$31,572,516		\$30,088,490		\$27,654,197		\$25,498,528		\$23,345,323
ENDING FUND BALANCE	\$31,572,516	\$30,088,490		\$27,654,197		\$25,498,528		\$23,345,323		\$21,125,028
FUND BALANCE AS % OF EXPENDITURES	26.72%	26.07%		23.35%		21.07%		18.87%		16.71%

# Enrollment Projections

## WSD Student Enrollment Projections by School

School	Total Enrollment, April 2024 <sup>1</sup>	MDRoffers Projected Total Student Enrollment <sup>2</sup>					Projected Enrollment Change, April 2024 to 2040	Building Capacity Range <sup>3</sup>
		2025	2027	2030	2035	2040		
<b>4K at Community Partner Sites</b>	<b>119</b>	<b>122</b>	<b>124</b>	<b>126</b>	<b>127</b>	<b>123</b>	<b>+4</b>	<b>N/A</b>
<b>Traditional Elementary Schools (EC-5, 4K-5, or 5K-5)</b>								
Franklin (5K-5)	227	205	192	181	181	180	-47	301-334
G.D. Jones (EC-5)	441	435	447	452	448	439	-2	528-587
Grant (5K-5)	186	186	183	176	165	166	-20	236-262
Hawthorn Hills (EC-5)	215	197	187	176	169	169	-46	381-424
Hewitt-Texas (5K-5)	99	91	88	83	85	89	-10	124-138
Jefferson (4K-5)	391	383	382	380	365	360	-31	524-582
John Marshall (5K-5)	197	196	198	193	184	183	-14	373-414
Lincoln (5K-5)	209	191	189	180	176	170	-39	284-316
Maine (5K-5)	245	237	235	238	237	235	-10	248-276
Rib Mountain (5K-5)	198	174	170	172	182	188	-10	248-276
Riverview (EC-5)	458	424	419	411	400	385	-73	557-619
South Mountain (5K-5)	217	210	209	209	211	219	+2	373-414
Stettin (5K-5)	334	317	324	336	348	361	+27	373-414
<b>Grades EC-5 in Traditional Elementary <sup>4</sup></b>	<b>3,417</b>	<b>3,247</b>	<b>3,225</b>	<b>3,187</b>	<b>3,151</b>	<b>3,145</b>	<b>-272</b>	<b>4,550-5,056</b>
<b>Other Programs</b>								
Red Granite Charter (4K-3) <sup>5</sup>	0	75	75	75	75	75	+75	96-107
Wausau Area Montessori (5K-8) <sup>6</sup>	104	112	122	132	132	132	+28	252-280
Wausau Area Virtual Education (5K-12) <sup>7</sup>	173	173	173	173	173	173	0	N/A
<b>Other Program Totals <sup>8</sup></b>	<b>422</b>	<b>505</b>	<b>515</b>	<b>525</b>	<b>525</b>	<b>525</b>	<b>+103</b>	<b>448-487</b>



# Evaluation Considerations—Revisiting Projections

FIGURE 16: WSD STUDENT ENROLLMENT PROJECTIONS BY SCHOOL

School	Total Enrollment, April 2024 <sup>1</sup>	MDRommers Projected Total Student Enrollment <sup>2</sup>					Projected Enrollment Change, April 2024 to 2040	Building Capacity Range <sup>3</sup>
		2025	2027	2030	2035	2040		
<b>4K at Community Partner Sites</b>	<b>119</b>	<b>122</b>	<b>124</b>	<b>126</b>	<b>127</b>	<b>123</b>	<b>+4</b>	<b>N/A</b>
<b>Traditional Elementary Schools (EC-5, 4K-5, or 5K-5)</b>								
Franklin (5K-5)	227	205	192	181	181	180	-47	301-334
G.D. Jones (EC-5)	441	435	447	452	448	439	-2	528-587
Grant (5K-5)	186	186	183	176	165	166	-20	236-262
Hawthorn Hills (EC-5)	215	197	187	176	169	169	-46	381-424
Hewitt-Texas (5K-5)	99	91	88	83	85	89	-10	124-138
Jefferson (4K-5)	391	383	382	380	365	360	-31	524-582
John Marshall (5K-5)	197	196	198	193	184	183	-14	373-414
Lincoln (5K-5)	209	191	189	180	176	170	-39	284-316
Maine (5K-5)	245	237	235	238	237	235	-10	248-276
Rib Mountain (5K-5)	198	174	170	172	182	188	-10	248-276
Riverview (EC-5)	458	424	419	411	400	385	-73	557-619
South Mountain (5K-5)	217	210	209	209	211	219	+2	373-414
Stettin (5K-5)	334	317	324	336	348	361	+27	373-414
<b>Grades EC-5 in Traditional Elementary <sup>4</sup></b>	<b>3,417</b>	<b>3,247</b>	<b>3,225</b>	<b>3,187</b>	<b>3,151</b>	<b>3,145</b>	<b>-272</b>	<b>4,550-5,056</b>

Consultant projected enrollment for each current elementary school, using current attendance areas and considering future demographic change and housing growth



# Evaluation Considerations—Revisiting Projections

FIGURE 14: TOTAL HOUSING UNIT PROJECTIONS BY CURRENT ELEMENTARY SCHOOL ATTENDANCE AREA

2024-25 Elementary School Attendance Area	Estimated/Projected Housing Units within 2024-25 Attendance Area						Projected Housing Unit Increase 2024 - 2040
	April 2024	2025	2027	2030	2035	2040	
Franklin	1,841	1,841	1,916	2,032	2,208	2,268	+427
G.D. Jones	1,941	1,998	2,055	2,061	2,061	2,061	+120
Grant	1,271	1,271	1,271	1,271	1,271	1,351	+80
Hawthorn Hills	2,174	2,250	2,327	2,502	2,705	2,940	+766
Hewitt-Texas	990	994	1,001	1,012	1,037	1,079	+89
Jefferson	2,185	2,185	2,185	2,253	2,253	2,253	+68
John Marshall	2,321	2,346	2,371	2,371	2,383	2,395	+74
Lincoln	1,800	1,800	1,856	1,856	1,966	2,006	+206
Maine	1,972	1,978	1,990	2,015	2,098	2,163	+191
Rib Mountain	2,182	2,185	2,240	2,332	2,500	2,694	+512
Riverview	2,799	2,803	2,806	2,815	2,829	2,861	+62
South Mountain	1,426	1,446	1,469	1,511	1,574	1,623	+197
Stettin	2,561	2,569	2,607	2,717	2,812	2,907	+346
<b>TOTALS</b>	<b>25,463</b>	<b>25,666</b>	<b>26,094</b>	<b>26,748</b>	<b>27,697</b>	<b>28,601</b>	<b>+3,138</b>

Enrollment projections directly considered housing growth in Rib Mountain and elsewhere, balanced against lower birth rates and fewer kids in older neighborhoods

