



South Orange and Maplewood School District
South Mountain Annex/Elementary School Projects
South Orange, N.J.

AUGUST/SEPTEMBER CONSTRUCTION ACTIVITIES

South Mountain Elementary School

- Contractor continued working on submittals for review / approval
- Corridor ceiling tiles complete. All devices reinstalled
- In-wall conduit/back boxes in addition masonry walls ongoing
- Installed primary/secondary (both encased in concrete) electrical conduits across driveway
- PSE&G set riser pole
- Completed Domestic water and fire suppression piping across driveway
- Paved trenches for electrical and water with HMA
- Exterior/ interior masonry block continues for addition
- Completed flooring in room 8 and ground floor corridor
- Painted walls and vinyl base in existing building for proposed connecting corridor to addition
- Demolished brick for new openings at connecting corridor
- Installed proposed stairs in addition
- Touch up in existing corridors and turn existing school over to custodial staff for cleaning
- Windows for addition delivered and stored

South Mountain Annex School

- Contractor continued working on submittals for review/approval
- Continue Fire Alarm wiring/ Close up ceilings
- Installed sheet metal blank off at VUV louvers
- Installed temp. partition wall at rear entrance per request of Fire Marshall
- Installed new EXIT sign by gym at request of Code Official
- Windows for addition delivered and stored

Epic Management, Inc.



Ceiling completed/All devices & fixtures reinstalled



Interior blockwork for addition at SME



Proposed elevator shaft at SME



Existing block/brick sawcut and removed for proposed connecting corridor at SME



Block wall removed/ Construction of Fire wall at SME



Primary electrical conduit at SME/ New riser pole set by PSE&G



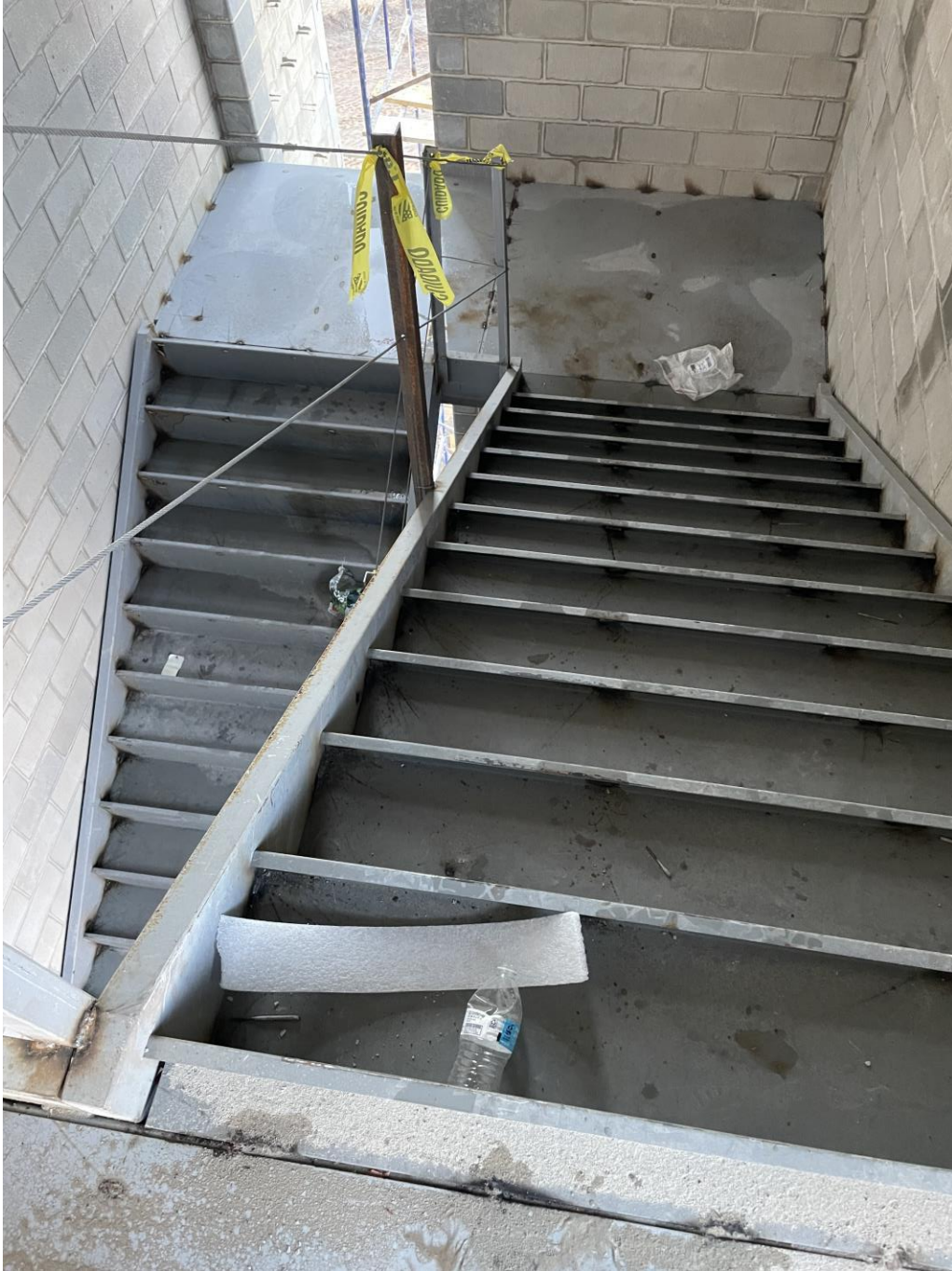
Secondary electrical conduit at SME



New walls for connecting corridor to addition at SME



Proposed walls for new connecting corridor to addition at SME



Proposed stairwell at SME addition



Domestic water and Fire suppression for SME



SMA cleaned up for fall season



Temporary partition wall at SMA