



South Orange-Maplewood Schools Renovations to Maplewood Middle School

Week of the 19th of August Construction Activities:

- All classrooms turned over for moving furniture back in.
- Main Office & 2nd Floor Asst. Principal Offices turned over and furniture moved back in.
- Pulled out of the Gym, Cafeteria, Library & Auditorium for floor cleanup and prep.
- Remaining classrooms/spaces will be turned over between Saturday the 24th & Thursday the 29th.
- Fire Alarm & PA device wiring continues- PA equipment, i.e., speakers, clock back boxes being installed in classrooms, corridors, etc.
- Steam, refrigerant lines & ATS work continues for all new FCUs, ERVs, UVs & VUVs.
- Louvers, VUV Extension & Sleeve installation continues- coordinated with the turnover of the rooms. Includes blocking off outside air plenum because of delay in VUVs.
- Interior electrical & mechanical conduit, piping runs continue.
- Last of the electrical gear placed on pad in courtyard.
- Continued running 2nd new gas line serving Auditorium rooftop equipment in the boiler room.
- PSE&G energized the new service on Monday, the 19th.
- Hanging doors on 2nd floor and 1st floors.
- Area B slate roof shingle removal and installation of new synthetic slate & asphalt shingles, including gutters in progress and will continue after school starts.
- Ductwork & room fit up continued in the Aux Gym, Science Rooms, Band, Boys & Girls locker rooms, etc.
- Boiler piping & valve installation continues- boiler feedwater system and expansion tank delivered.
- New Sub 8 abatement work identified in Boiler Room- abatement scheduled to begin Saturday, the 24th.
- **Averaging ~ 50 workers on site per day. 7 to 5 pm weekly. Plus, weekend OT to stay on schedule.**



Site Map for Reference Only

ent, Inc.

ataway, NJ 08854

732-752-6100 • Fax 732-752-9106



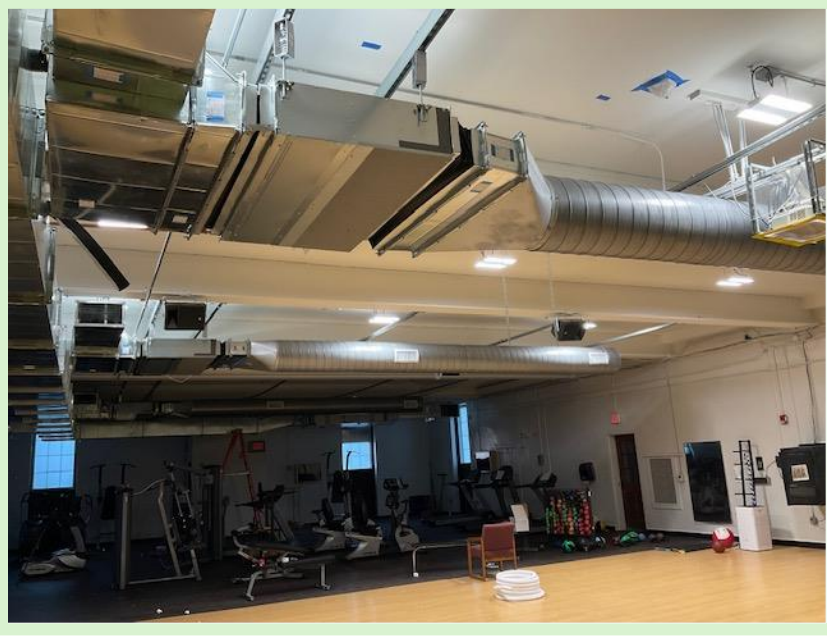
Main Office



2nd Floor Assistant Principal's Office



Library (still need some items moved out and others staged at the their final location)



Auxiliary Gym- expecting to turn over COB 08/23.



Corridor Clean Up Pics



Typical Classroom Setups



Gym (cleared out for floor preparation)



Left: Interior Ramp & Railings, **Right:** New Non-Slip treads Stairwell #6 in progress.



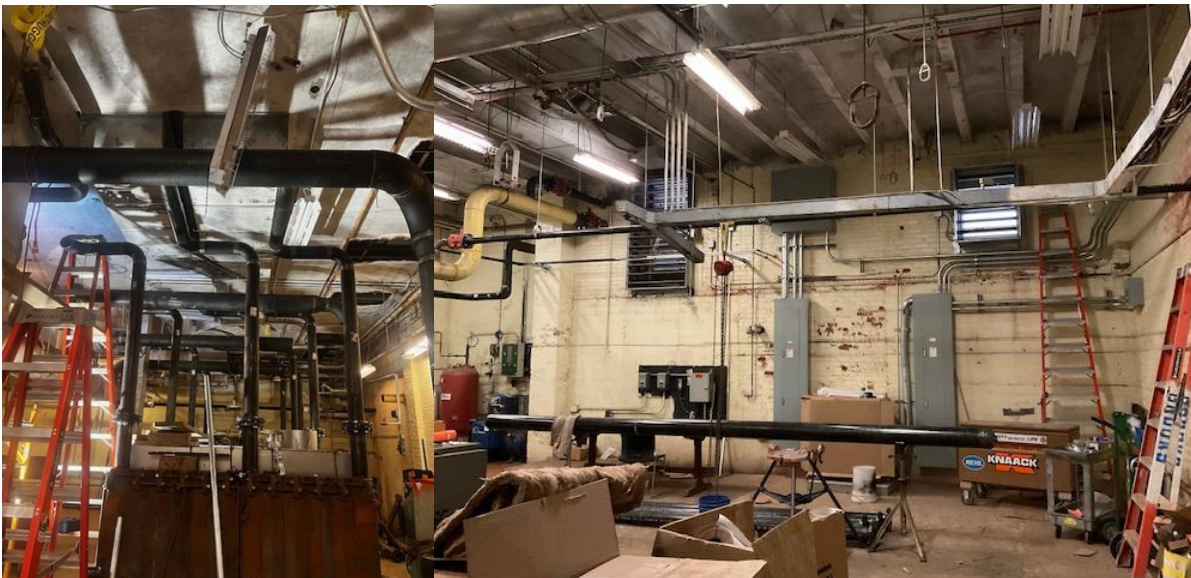
Exterior Electrical Gear Completed (primary service, not show, now energized)



Interior Courtyard Heat Pump Checkout Underway (Typ. of 5)



Rooftop ducting underway- Area C (Gym) shown.



Left: Boiler Room piping & valving. Right: 2nd Nat Gas Piping line & Electrical Panels in Boiler Room